

PART NUMBER:

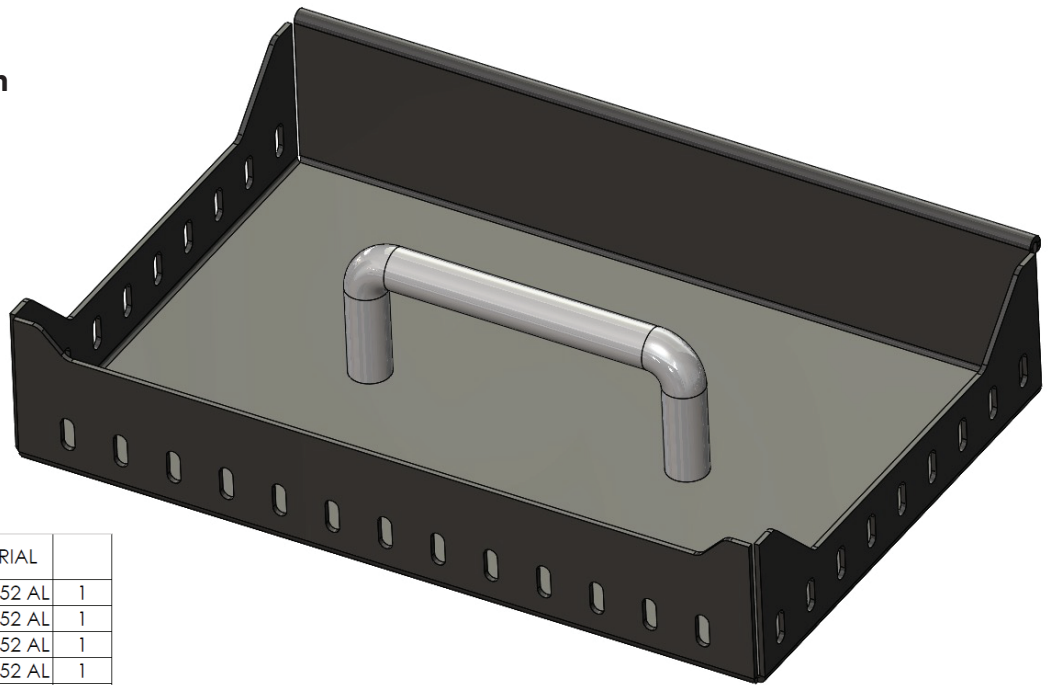
**5570-0065**

DESCRIPTION: ADAPT CARGO TRAY



## INSTALL INSTRUCTIONS

1. Using (2X) 1/4-20 X 5/8 Button Head Bolts, fasten the handle to the tray.

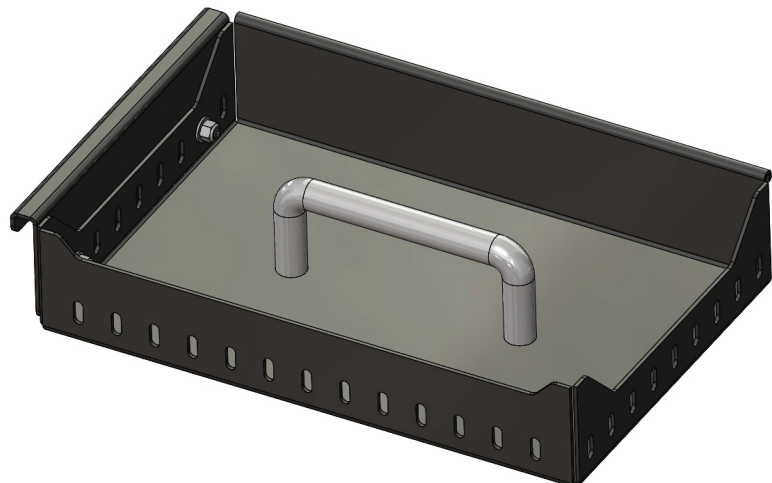


PART NUMBER	MATERIAL	
5570-0065-TRAY R1	.100 5052 AL	1
5570-0065-LHBRKT IR	.100 5052 AL	1
5570-0065-RHBRKT IR	.100 5052 AL	1
5570-0065-HANGER IR	.100 5052 AL	1
5500-4610 .25-20X.625 BH BOLT SS	N/A	8
5500-0004-.25 SS WASHER	N/A	6
5500-4010-.25-20 LN SS	N/A	6
5570-0064-HANDLE	N/A	1

**If using the tray for the Lo-Side Toolbox, skip the following steps and discard any remaining parts and hardware. Continue for using the tray on the Single Lid and Gullwing toolboxes.**

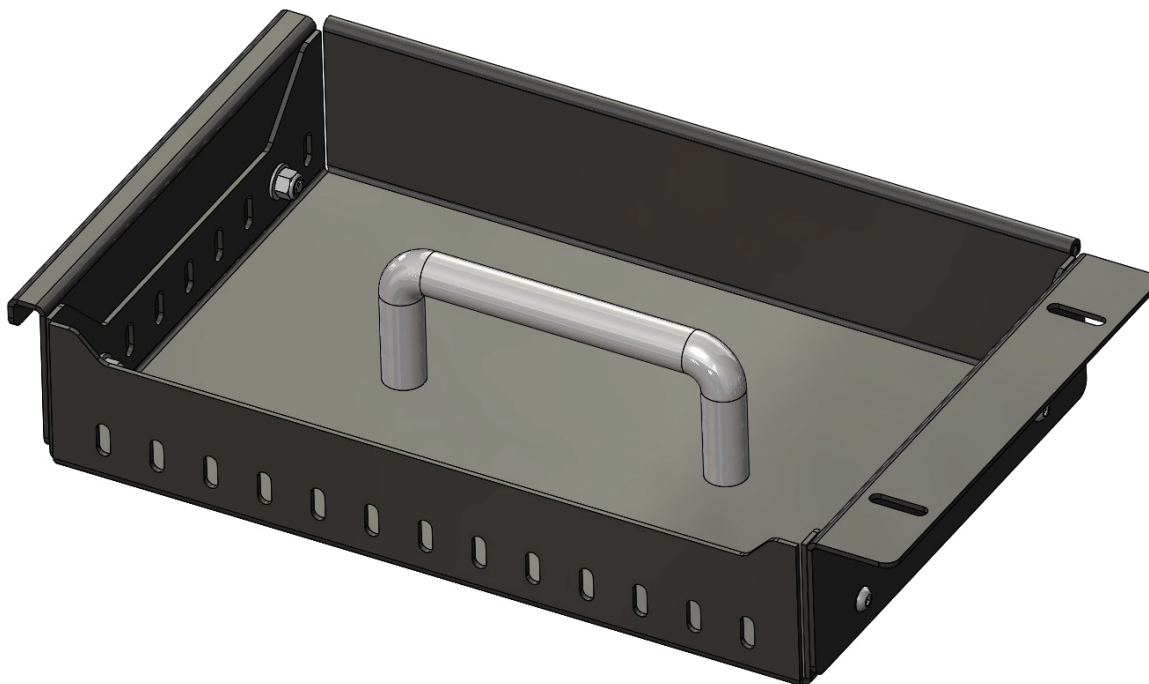
2. Using (2X) 1/4-20 X 5/8 Button Head Bolts, (2X) 1/4 Flat Washers, (2X) 1/4-20 Nylon Lock Nuts install the **Left Hand Bracket** as shown below.

The head of the bolt should be on the outside of the Tray placing the Lock Nuts on the inside.



3. Using (2X) 1/4-20 X 5/8 Button Head Bolts, (2X) 1/4 Flat Washers, (2X) 1/4-20 Nylon Lock Nuts install the **Right Hand Bracket** as shown below.

The head of the bolt should be on the outside of the Tray placing the Lock Nuts on the inside.



- 
4. Using (2X) 1/4-20 X 5/8 Button Head Bolts, (2X) 1/4 Flat Washers, (2X) 1/4-20 Nylon Lock Nuts install the Hanger as shown below. The head of the bolt should be on the top of the Tray placing the Lock Nuts on the bottom.

