

**SEA**

**Cold Water - Electric Powered**

**LANDA®**

Kärcher Group

**Operator's Manual**

**Pressure Washer**



**MODELS:**

<b>SEA3-11024D</b>	<b>1.106-500.0</b>
<b>SEA4-20024A</b>	<b>1.106-501.0</b>
<b>SEA4-20024B</b>	<b>1.106-502.0</b>
<b>SEA4-20024C</b>	<b>1.106-503.0</b>
<b>SEA4-20024G</b>	<b>1.106-505.0</b>
<b>SEA4-20024H</b>	<b>1.106-506.0</b>
<b>SEA4-30024B</b>	<b>1.106-507.0</b>
<b>SEA4-30024C</b>	<b>1.106-508.0</b>

For the Landa Dealer nearest you, consult our web page at [www.landa.com](http://www.landa.com)



Intertek

8.913-999.0-N 08/01/17

*Machine Data Label*

---

Model: \_\_\_\_\_

Date of Purchase: \_\_\_\_\_

Serial Number: \_\_\_\_\_

Dealer: \_\_\_\_\_

Address: \_\_\_\_\_

Phone Number: \_\_\_\_\_

Sales Representative: \_\_\_\_\_

**Machine Data Label . . . . .2**  
**Table of Contents . . . . .3**  
**How To Use This Manual . . . . .4**

*Safety*

Introduction & Safety Information . . . . .5  
 Important Safety Information. . . . .6

*Operations*

Component Identification . . . . .8  
 Assembly Instructions . . . . .9  
 Operating Instructions . . . . .10  
 Detergent and General Operating Techniques . . . . .11  
 Thermal Pump Protection . . . . .11  
 Cleaning Tips . . . . .11  
 Rinsing . . . . .11  
 Shutting Down And Clean-Up . . . . .12  
 Storage . . . . .13

*Maintenance*

Troubleshooting . . . . .14  
 Preventative Maintenance . . . . .16  
 Maintenance Schedule . . . . .16  
 Oil Change Record . . . . .17

*Parts*

Landa SEA - Left . . . . . 20  
 Landa SEA - Right . . . . . 21  
 Float Tank . . . . . 26  
 Handheld Wireless - 1 Step . . . . . 28  
 Handheld Wireless - 2 Step . . . . . 30  
 Handheld Wireless Operating Instructions . . . . . 32  
 Transmitter/Receiver Communication Set-up at  
     Factory . . . . . 33  
 Hose And Spray Gun . . . . . 34  
 Pump . . . . . 35  
 Specifications . . . . . 36  
 LB Series Pump . . . . . 38  
 LT.2 Series Pump . . . . . 40  
 VRT3 Unloader . . . . . 42  
 VB8 Unloader Valve . . . . . 44

## How To Use This Manual

This manual contains the following sections:

- How to Use This Manual
- Safety
- Operations
- Maintenance
- Parts List

The HOW TO USE THIS MANUAL section will tell you how to find important information for ordering correct repair parts.

Parts may be ordered from authorized dealers. When placing an order for parts, the machine model and machine serial number are important. Refer to the MACHINE DATA box which is filled out during the installation of your machine. The MACHINE DATA box is located on the inside of the front cover of this manual.

Model: _____
Date of Purchase: _____
Serial Number: _____
Dealer: _____
Address: _____
Phone Number: _____
Sales Representative: _____

The model and serial number of your machine is located on the back of the machine.

The SAFETY section contains important information regarding hazardous or unsafe practices of the machine. Levels of hazards are identified that could result in product damage, personal injury, or severe injury resulting in death.

The OPERATIONS section is to familiarize the operator with the operation and function of the machine.

The MAINTENANCE section contains preventive maintenance to keep the machine and its components in good working condition. They are listed in this general order:

- Troubleshooting
- Preventative Maintenance

The PARTS LIST section contains assembled parts illustrations and corresponding parts list. The parts lists include a number of columns of information:

- **REF** – column refers to the reference number on the parts illustration.
- **PART NO.** – column lists the part number for the part.
- **QTY** – column lists the quantity of the part used in that area of the machine.
- **DESCRIPTION** – column is a brief description of the part.
- **NOTES** – column for information not noted by the other columns.

*NOTE: If a service or option kit is installed on your machine, be sure to keep the KIT INSTRUCTIONS which came with the kit. It contains replacement parts numbers needed for ordering future parts.*

*NOTE: The manual part number is located on the lower right corner of the front cover.*

## **Introduction & Safety Information**

Thank you for purchasing this Pressure Washer.

We reserve the right to make changes at any time without incurring any obligation.

### **Owner/User Responsibility:**

The owner and/or user must have an understanding of the manufacturer's operating instructions and warnings before using this pressure washer. Warning information should be emphasized and understood. If the operator is not fluent in English, the manufacturer's instructions and warnings shall be read to and discussed with the operator in the operator's native language by the purchaser/owner, making sure that the operator comprehends its contents.

Owner and/or user must study and maintain for future reference the manufacturers' instructions.

The operator must know how to stop the machine quickly and understand the operation of all controls. Never permit anyone to operate the engine without proper instructions.

### **SAVE THESE INSTRUCTIONS**

**This manual should be considered a permanent part of the machine and should remain with it if machine is resold.**

**When ordering parts, please specify model and serial number. Use only identical replacement parts.**

**This machine is to be used only by trained operators.**

## Important Safety Information



**WARNING:** To reduce the risk of injury, read operating instructions carefully before using.

1. Read the owner's manual thoroughly. Failure to follow instructions could cause malfunction of the machine and result in death, serious bodily injury and/or property damage.
2. Know how to stop the machine and bleed pressure quickly. Be thoroughly familiar with the controls.
3. Stay alert — watch what you are doing.
4. All installations must comply with local codes. Contact your electrician, plumber, utility company or the selling dealer for specific details. If your machine is rated 250 volts or less, single phase a ground fault circuit interrupter (GFCI) will be provided. If rated more than 250 volts, or more than single phase this product should only be connected to a power supply protected by a GFCI.

**DANGER:** Improper connection of the equipment-grounding conductor can result in a risk of electrocution. Check with a qualified electrician or service personnel if you are in doubt as to whether the outlet is properly grounded. Do not modify the plug provided with the product - if it will not fit the outlet, have a proper outlet installed by a qualified electrician. Do not use any type of adapter with this product



**DANGER:** Keep wand, hose, and water spray away from electric wiring or fatal electric shock may result.

5. To protect the operator from electrical shock, the machine must be electrically grounded. It is the responsibility of the owner to connect this machine to a UL grounded receptacle of proper voltage and amperage ratings. Do not spray water on or near electrical components. Do not touch machine with wet hands or while standing in water. Always disconnect power before servicing.



**WARNING:** Flammable liquids can create fumes which can ignite, causing property damage or severe injury.

**WARNING:** Risk of explosion — Do not spray flammable liquids.

6. Do not allow acids, caustic or abrasive fluids to pass through the pump.
7. Never run pump dry or leave spray gun closed longer than 1-2 minutes.
8. Keep operating area clear of all persons.



**WARNING:** High pressure spray can cause paint chips or other particles to become airborne and fly at high speeds. To avoid personal injury, eye, hand and foot safety devices must be worn.

9. Always wear properly rated eye protection such as safety goggles or face shield while spraying.

(Safety glasses do not provide full protection.)



**WARNING:** Grip cleaning wand securely with both hands before starting. Failure to do this could result in injury from a whipping wand.



**WARNING:** High pressure developed by these machines will cause personal injury or equipment damage. Keep clear of nozzle. Use caution when operating. Do not direct discharge stream at people and animals, or severe injury or death will result.

10. To reduce the risk of injury, close supervision is necessary when a machine is used near children. Do not allow children to operate the pressure washer. **This machine must be attended during operation.**
11. Never make adjustments on machine while in operation.

12. Be certain all quick coupler fittings are secured before using pressure washer.



**WARNING: Protect machine from freezing.**

13. To keep machine in best operating conditions, it is important you protect machine from freezing. Failure to protect machine from freezing could cause malfunction of the machine and result in death, serious bodily injury, and/or property damage. Follow storage instructions specified in this manual.

14. Inlet water must be clean fresh water and no hotter than 185°F.



**WARNING: If connection is made to potable water system, the system shall be protected against backflow.**

15. Manufacturer will not be liable for any changes made to our standard machines or any components not purchased from us.
16. The best insurance against an accident is precaution and knowledge of the machine.



**WARNING: Be extremely careful when using a ladder, scaffolding or any other relatively unstable location. The cleaning area should have adequate slopes and drainage to reduce the possibility of a fall due to slippery surfaces.**

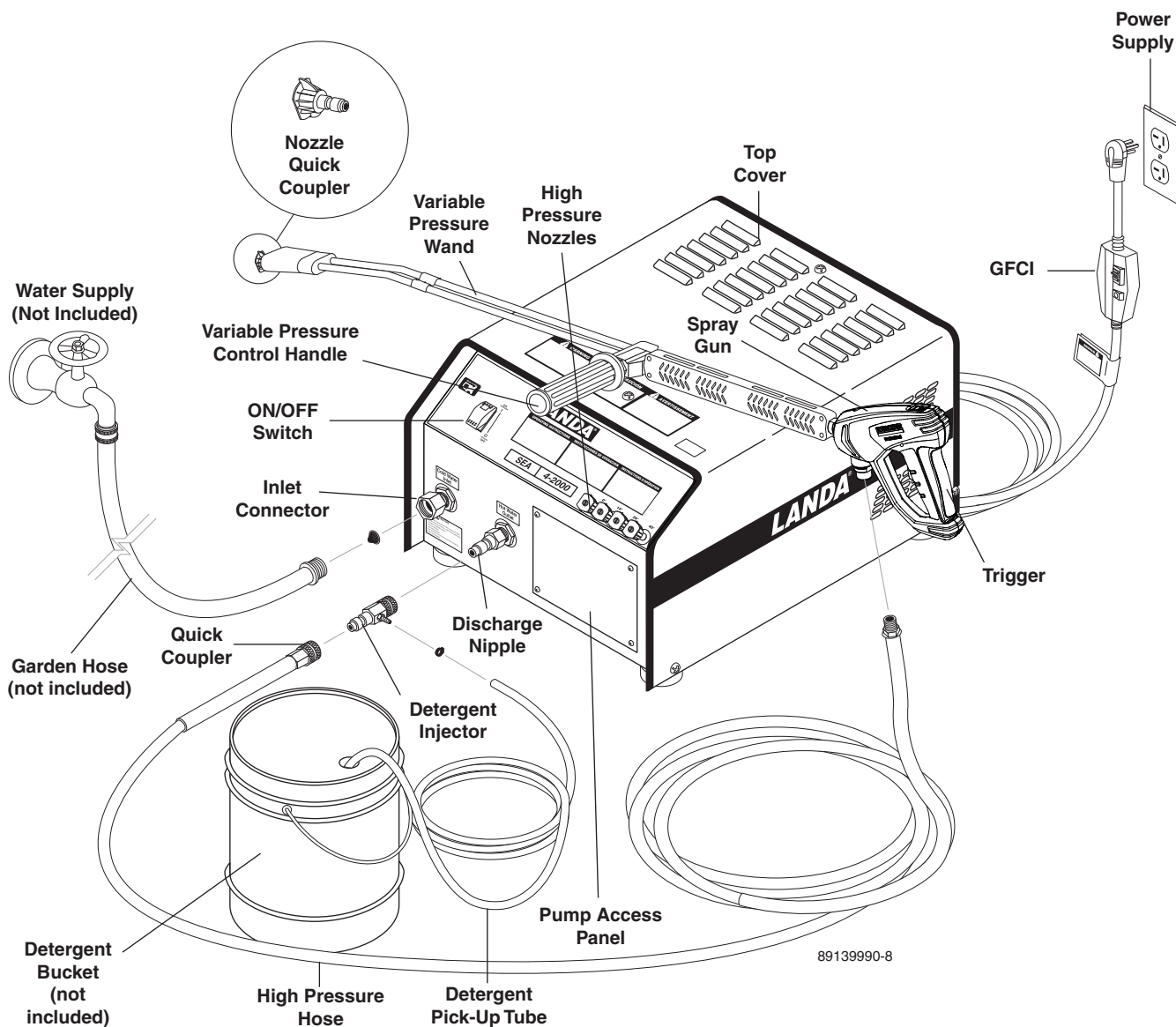
17. Do not overreach or stand on unstable support. Keep good footing and balance at all times.
18. Do not operate this machine when fatigued or under the influence of alcohol, prescription medications, or drugs.



**Follow the maintenance instructions specified in the manual.**



Component Identification



**Detergent Injector** - Allows you to siphon and mix detergents.

**High Pressure Hose** — Connect one end to water pump discharge nipple and the other end to spray gun.

**Spray Gun** — Controls the application of water and detergent onto cleaning surface with trigger device. Includes safety latch.

**Variable Pressure Handle** — Turn counter clockwise to siphon detergent when detergent injector is attached or lower pressure.

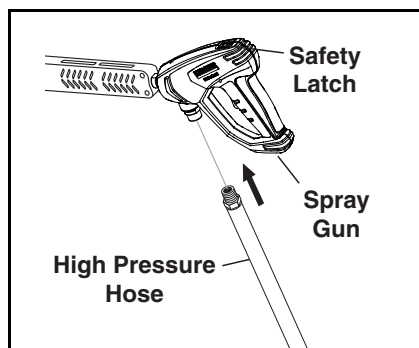
**Wand** — Must be connected to the spray gun.

**GFCI** — Designed to prevent electrical shock. Has test and reset button. Reset button must be pushed in for operation.

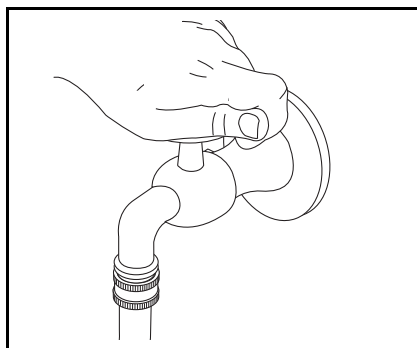
*NOTE: If trigger on spray gun is released for more than 2 minutes, water will leak from valve. Warm water will discharge from pump protector onto floor. This system prevents internal pump damage.*



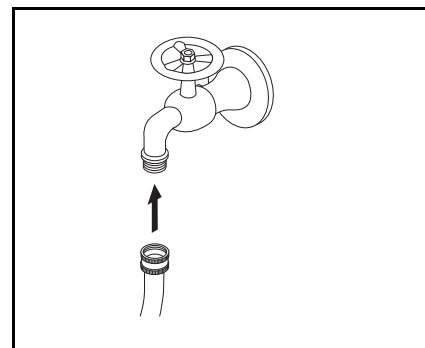
## Assembly Instructions



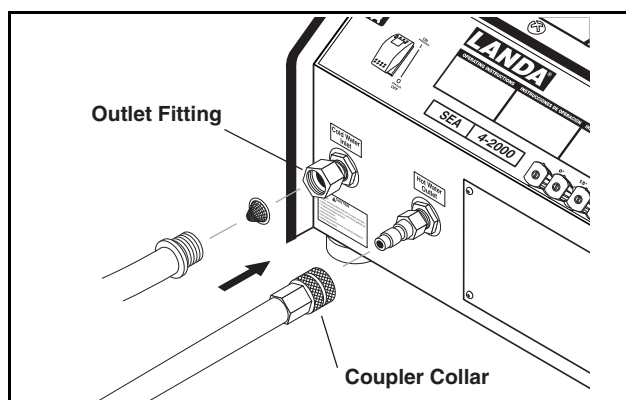
**STEP 1:** Attach the high pressure hose to the spray gun using teflon tape on hose threads.



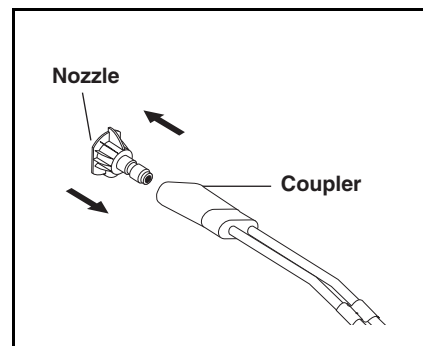
**STEP 2:** Before installing nozzle, turn on water supply and run machine allowing water to flush through the system until clear.



**STEP 3:** Connect garden hose to the cold water source.

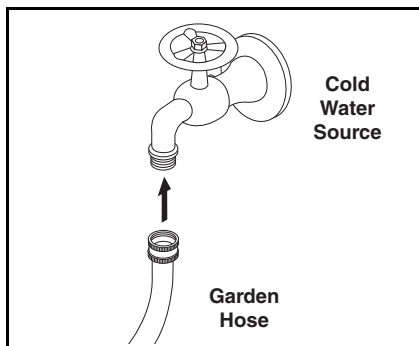


**STEP 4:** Connect the high pressure hose to the outlet discharge fitting. Push coupler collar forward until secure. Connect the garden hose to pump water inlet. Inspect inlets. **CAUTION: Do not run the pump without water or pump damage will result.**

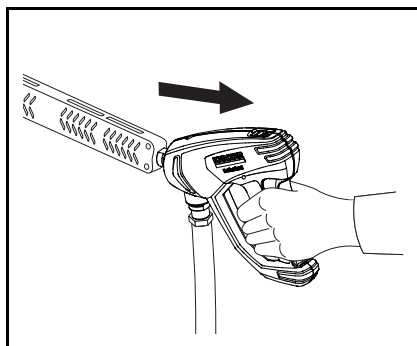


**STEP 5:** Insert nozzle into coupler. Release the coupler collar and push the nozzle until the collar clicks. Pull the nozzle to make sure it is seated properly.

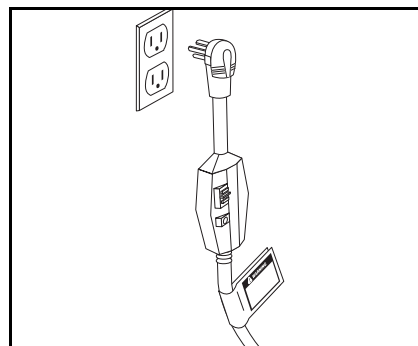
Operating Instructions



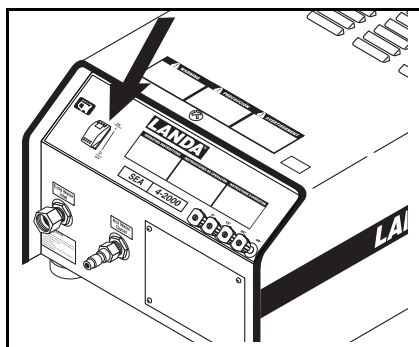
**STEP 1:** Connect garden hose to the cold water source and turn water on completely. Never use hot water.



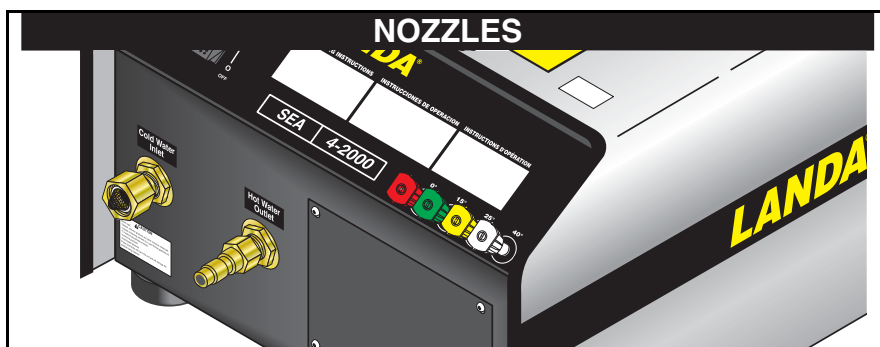
**STEP 2:** Trigger the spray gun to eliminate trapped air then wait for a steady flow of water to emerge from the spray wand. Then install nozzle.



**STEP 3:** Connect to appropriate power supply. Push reset button.

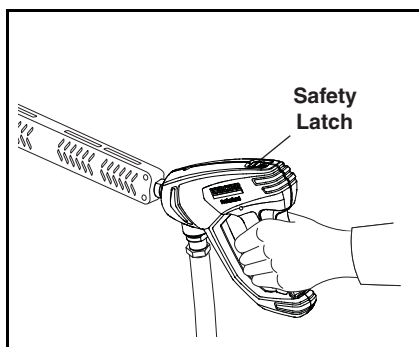


**STEP 4:** Turn machine on by flipping switch at front of machine.

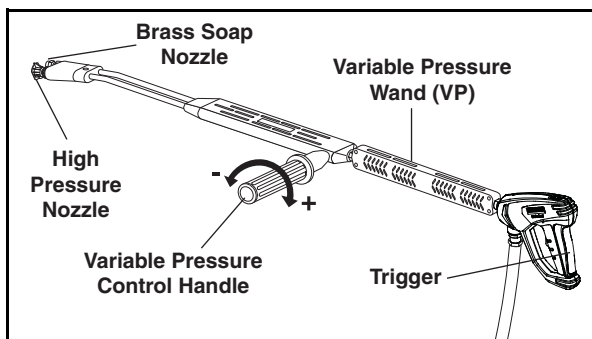


The five color-coded quick connect nozzles provide a wide array of spray widths from 0° to 40° and are easily accessible when placed in the convenient rubber nozzle holder, which is provided on the front of the machine.

*NOTE: For a more gentle rinse, select the white 40° or green 25° nozzle. To scour the surface, select the yellow 15° or red 0° nozzle. To apply detergent select the black nozzle.*



**⚠ WARNING!** Never replace nozzles without engaging the safety latch on the spray gun trigger.



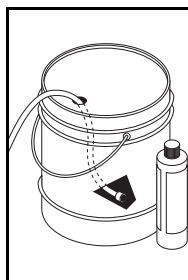
Selection of high or low pressure is accompanied by turning the handle.

*NOTE: High pressure nozzle must be inserted at end of wand to obtain high pressure. To apply soap read operator's manual.*

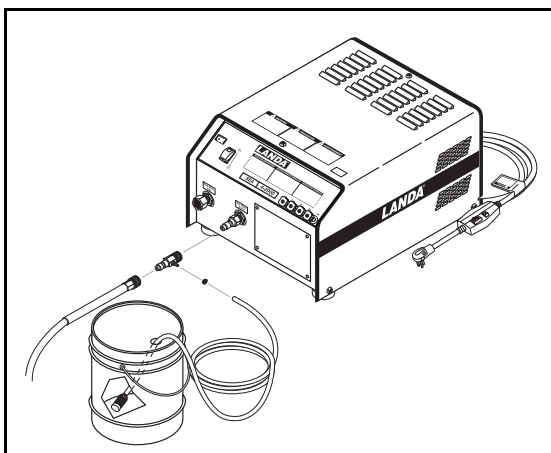
## Detergent and General Operating Techniques



**WARNING:** Some detergents may be harmful if inhaled or ingested, causing severe nausea, fainting or poisoning. The harmful elements may cause property damage or severe injury.



**STEP 1:** Use detergent designed specifically for pressure washers. Household detergents could damage the pump. Prepare detergent solution as required by the manufacturer. Fill a container with pressure washer detergent. Place the filter end of detergent suction tube into the detergent container.



**STEP 2:** Apply safety latch to spray gun trigger. Secure black detergent nozzle into quick coupler.

*NOTE: Detergent cannot be applied using the Yellow nozzle.*

**STEP 3:** With engine running, pull trigger to operate machine. Liquid detergent is drawn into the machine and mixed with water. Apply detergent to work area. Do not allow detergent to dry on surface.

**IMPORTANT:** You must flush the detergent injection system after each use by placing the suction tube into a bucket of clean water, then run the pressure washer in low pressure for 1-2 minutes.

## Thermal Pump Protection

If you run the engine on your pressure washer for 2-3 minutes without pressing the trigger on the spray gun, circulating water in the pump can reach high temperatures. When the water reaches this temperature, the pump protector engages and cools the pump by discharging the warm water onto the ground. This thermal device prevents internal damage to the pump.

## Cleaning Tips

Pre-rinse cleaning surface with fresh water. Place detergent suction tube directly into cleaning solution and apply to surface at low pressure (for best results, limit your work area to sections approximately 6 feet square and always apply detergent from bottom to top). Allow detergent to remain on surface 1-3 minutes. Do not allow detergent to dry on surface. If surface appears to be drying, simply wet down surface with fresh water. If needed, use brush to remove stubborn dirt. Rinse at high pressure from top to bottom in an even sweeping motion keeping the spray nozzle approximately 1 foot from cleaning surface. Use overlapping strokes as you clean and rinse any surface. For best surface cleaning action spray at a slight angle.

## Recommendations:

- Before cleaning any surface, an inconspicuous area should be cleaned to test spray pattern and distance for maximum cleaning results.
- If painted surfaces are peeling or chipping, use extreme caution as pressure washer may remove the loose paint from the surface.
- Keep the spray nozzle a safe distance from the surface you plan to clean. High pressure wash a small area, then check the surface for damage. If no damage is found, continue to pressure washing.



### **CAUTION - Never use:**

- Bleach, chlorine products and other corrosive chemicals
- Liquids containing solvents (i.e., paint thinner, gasoline, oils)
- Tri-sodium phosphate products
- Ammonia products
- Acid-based products

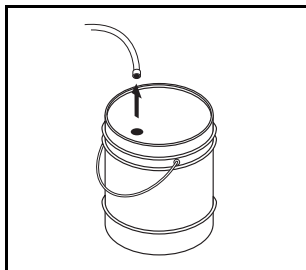
These chemicals will harm the machine and will damage the surface being cleaned.

## Rinsing

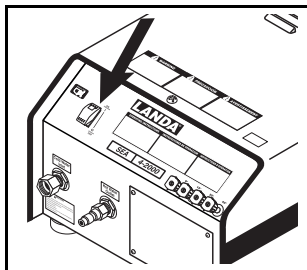
It will take a few seconds for the detergent to clear. Apply safety latch to spray gun. Remove black soap nozzle from the quick coupler. Select and install the desired high pressure nozzle.

*NOTE: You can also stop detergent from flowing by simply removing detergent siphon tube from bottle.*

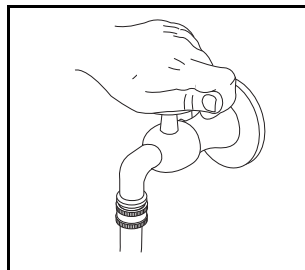
## Shutting Down And Clean-Up



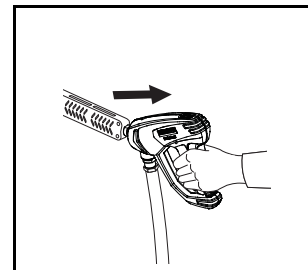
**STEP 1:** Remove detergent suction tube from container and insert into one gallon of fresh water. Slide nozzle forward for low pressure or to connect black detergent nozzle. Pull trigger on spray gun and siphon water for one minute.



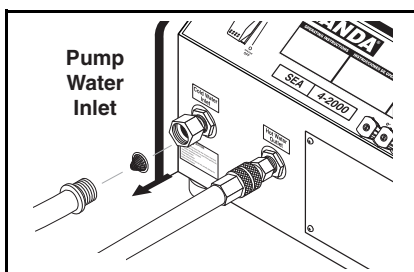
**STEP 2:** Turn off machine by flipping switch on front of motor.



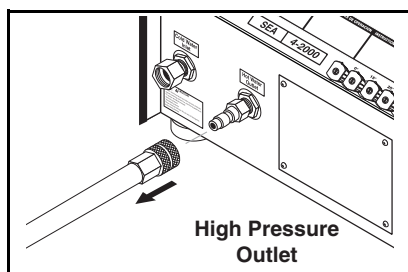
**STEP 3:** Turn off water supply.



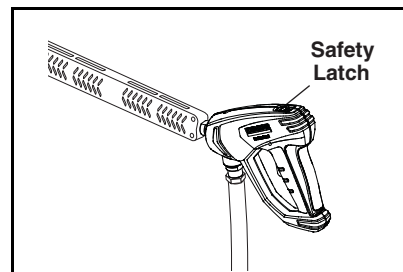
**STEP 4:** Press trigger to release water pressure.



**STEP 5:** Disconnect the garden hose from the water inlet on the machine.



**STEP 6:** Disconnect the high pressure hose from high pressure outlet.



**STEP 7:** Engage the spray gun safety lock.

## Storage

### Pump Storage



**CAUTION**

***CAUTION: Always store your pressure washer in a location where the temperature will not fall below 32° F (0° C). The pump in this machine is susceptible to permanent damage if frozen.***

**FREEZE DAMAGE IS NOT COVERED BY WARRANTY.**

If you must store your pressure washer in a location where the temperature is below 32° F, you can minimize the chance of damage to your machine by draining your machine as follows:

1. Stop the pressure washer and detach supply hose and high pressure hose. Squeeze the trigger of the spray gun to drain all water from the wand and hose.
2. Restart pressure washer and let it run briefly (about 5 seconds) until water no longer discharges from the high pressure outlet.

## Troubleshooting

PROBLEM	POSSIBLE CAUSE	SOLUTION
<b>PUMP RUNNING NORMALLY BUT PRESSURE LOW ON INSTALLATION</b>	Pump sucking air	Check water supply and possibility of air seepage.
	Check valves sticking	Check and clean or replace if necessary.
	Unloader valve seat faulty	Check and replace if necessary.
	Faulty or misadjusted unloader valve	Tampering with the factory setting may cause personal injury and/or property damage, and will void the manufacturer's warranty.
	Nozzle incorrectly sized	Check and replace if necessary.
	Worn piston packing	Check and replace if necessary.
<b>FLUCTUATING PRESSURE</b>	Valves worn	Check and replace if necessary.
	Blockage in valve	Check and clean out if necessary.
	Pump sucking air	Check water supply connections.
	Worn piston packing	Check and replace if necessary.
	Insufficient water	Check filter and hose for breakage.
<b>PRESSURE LOW AFTER PERIOD OF NORMAL USE</b>	Nozzle worn	Check and replace if necessary.
	Suction or delivery valves worn	Check and replace if necessary.
	Suction or delivery valves blocked	Check and clean if necessary.
	Unloader valve seat worn	Check and replace if necessary.
	Unloader adjusted improperly	Call local Landa dealer.
	Worn piston packing	Check and replace if necessary.
	Bypass valve within unloader is obstructed or leaking	Remove and clean bypass cartridge.
<b>PUMP NOISY</b>	Air in suction line	Check water supply and connections on suction line.
	Broken or weak suction or delivery valve spring	Check and replace if necessary.
	Foreign matter in valves	Check and clean if necessary.
	Worn bearings	Check and replace if necessary.
	Excessive temperature of water	Reduce to below 140° F.

<b>PROBLEM</b>	<b>POSSIBLE CAUSE</b>	<b>SOLUTION</b>
<b>PRESENCE OF WATER IN PUMP OIL</b>	Oil seal worn	Check and replace if necessary.
	High humidity in air	Check and change oil twice as often.
	Piston packing worn	Check and replace if necessary.
<b>WATER DRIPPING FROM UNDER PUMP</b>	Piston packing worn	Check and replace if necessary.
	O-Ring plunger retainer worn	Check and replace if necessary.
<b>OIL DRIPPING FROM PUMP</b>	Oil seal worn	Check and replace if necessary.
<b>EXCESSIVE VIBRATION IN HIGH PRESSURE HOSE</b>	Irregular functioning of the pump valves	Check and replace if necessary.
	Obstruction in filter	Clean inlet filter.
<b>MOTOR WILL NOT RUN</b>	Motor overload	Push in the overload button located on the motor (single phase) or the overload button on the magnetic start switch (three phase).
	Stepdown transformer fuses	Check fuses and voltage. Replace if necessary.
	Coil of magnetic starter defective	Replace coil after the timer and unloader switch have been tested.
<b>MACHINE WILL NOT TURN ON WHEN SWITCH IS PUSHED</b>	Timer is defective	Join wires 15 and 16 together on timer. If machine works, replace timer.

**Preventative Maintenance**

This pressure washer was produced with the best available materials and quality craftsmanship. However, you as the owner, have certain responsibilities for the correct care of the equipment. Attention to regular preventative maintenance procedure will assist in preserving the performance of your equipment. Contact your dealer for maintenance. Regular preventative maintenance will add many hours to the life of your pressure washer. Perform maintenance more often under severe conditions.

<b>Maintenance Schedule</b>		
Pump Oil	Inspect	25 hours or Weekly
	Change	Yearly
	<b>Use 10W-40 non-foaming oil for pump</b>	
Water Filter	Inspect	Daily
	Change	Yearly
Belt Tension	Inspect	Every 3 months
Electric Cord	Inspect	Daily
Coupler )-rings	Inspect	Yearly



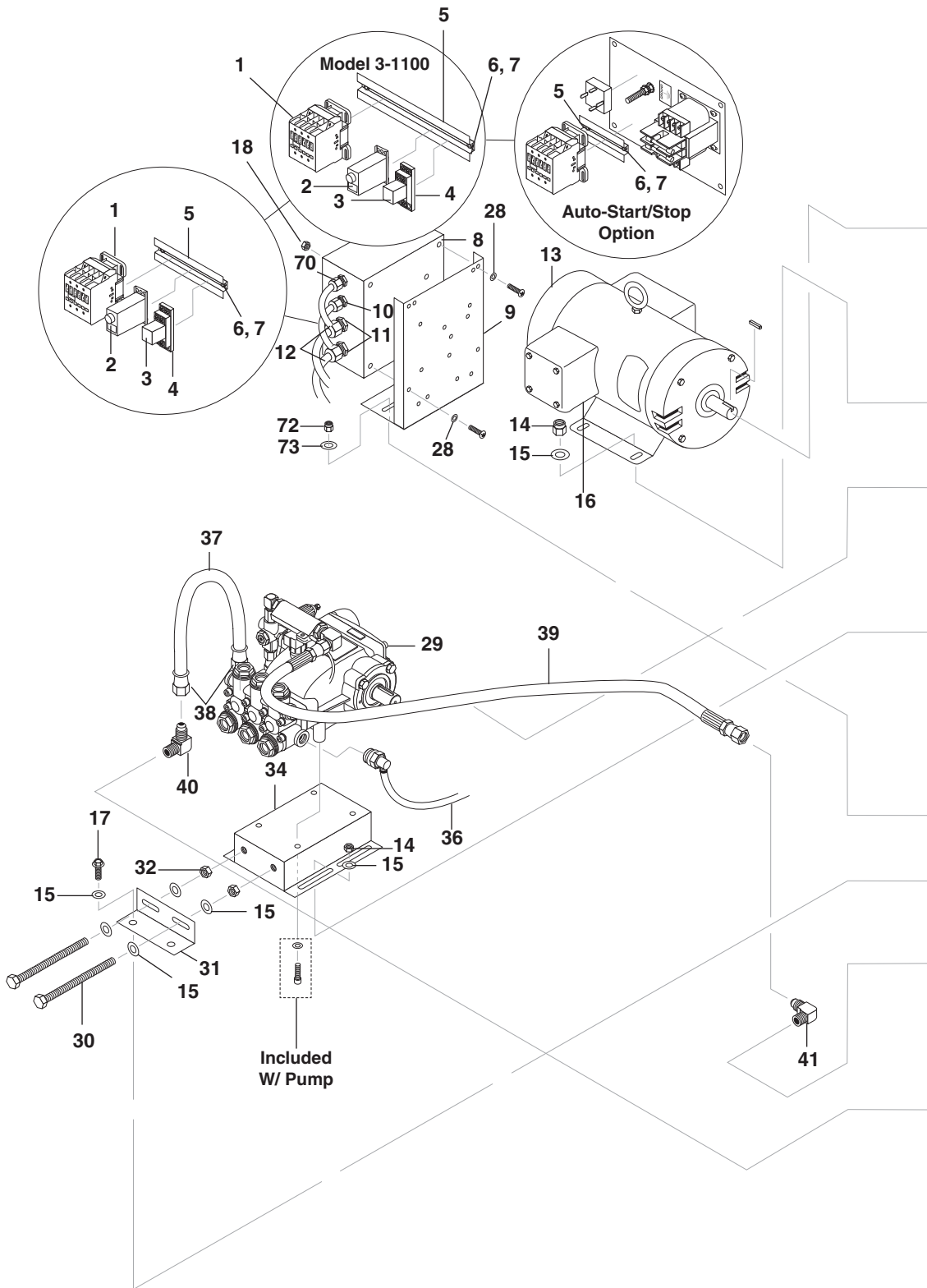


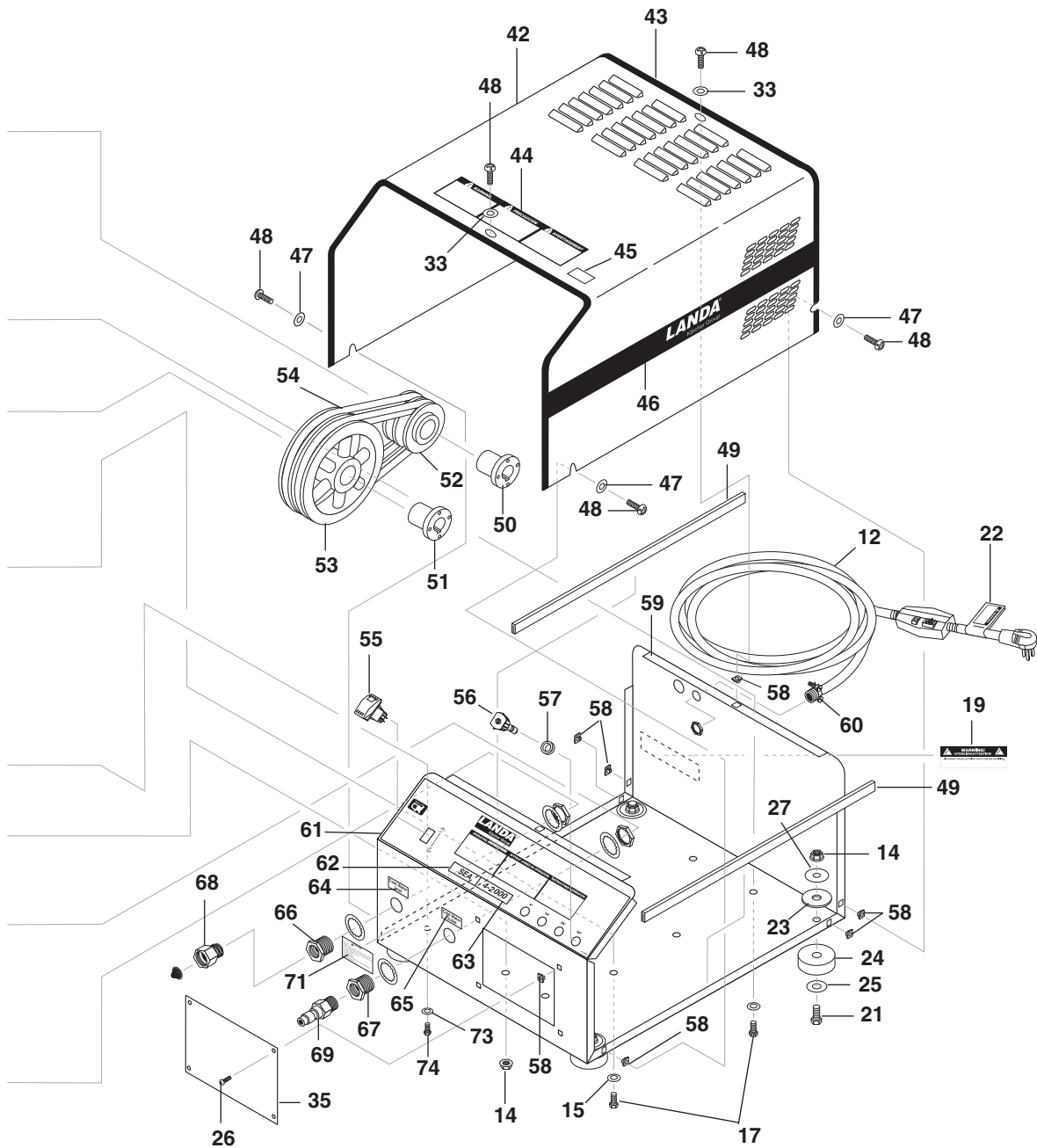


# Parts

**1.106-500.0, 1.106-501.0, 1.106-502.0, 1.106-503.0,  
1.106-505.0, 1.106-506.0, 1.106-507.0, 1.106-508.0**

**LANDA SEA**





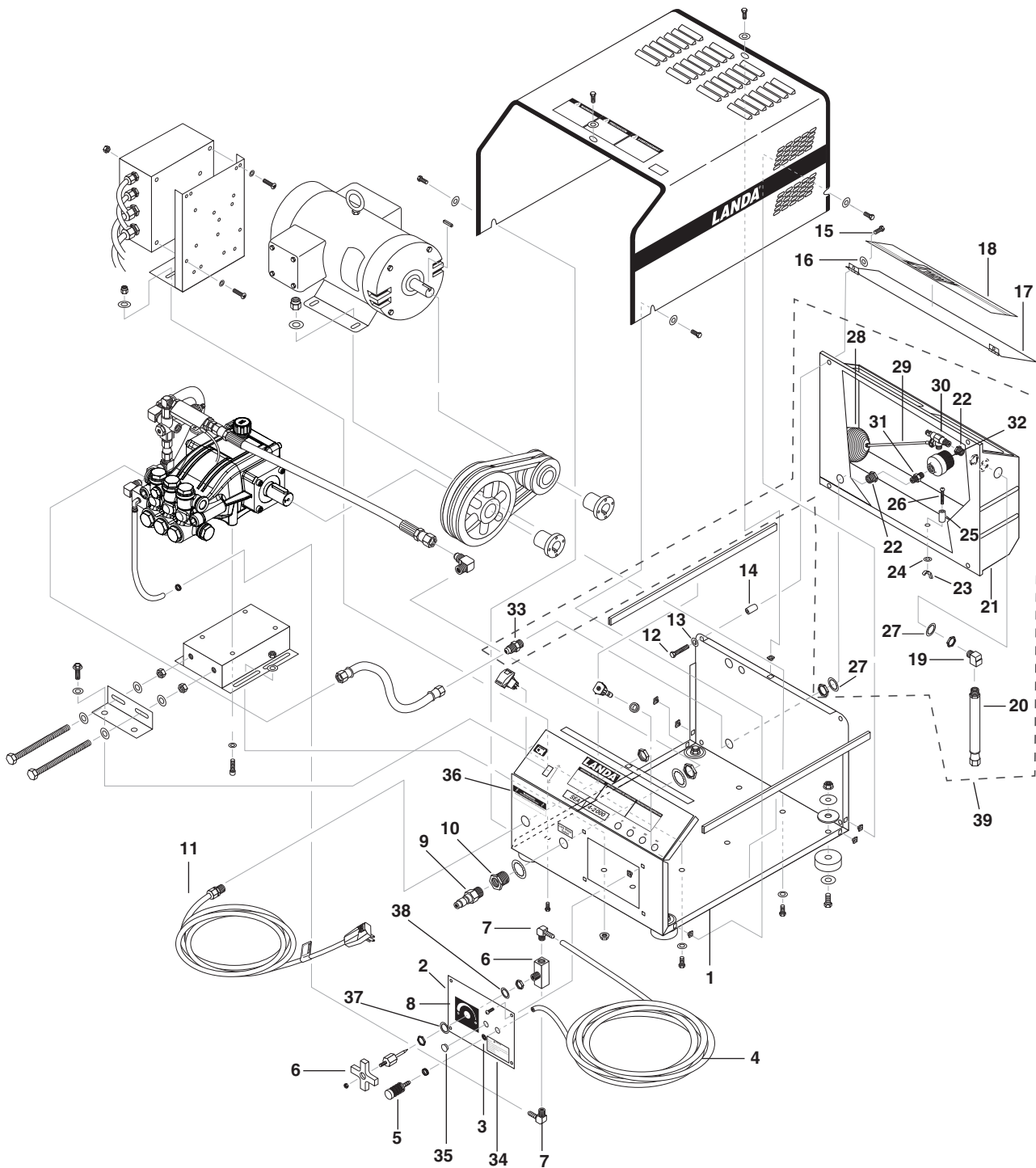
REF	PART NO.	QTY	DESCRIPTION	NOTES
1	-	1	CONTACTOR	SEE SPECIFICATIONS PAGES
-	-	1	OVERLOAD	SEE SPECIFICATIONS PAGES
-	-	1	TRANSFORMER	SEE SPECIFICATIONS PAGES
-	-	2	PRIMARY FUSE	SEE SPECIFICATIONS PAGES
-	-	1	SECONDARY FUSE	SEE SPECIFICATIONS PAGES
2	8.751-306.0	1	TIMER, MULTI-FUNCTION, 24V-120/240V 5A	
3	9.802-468.0	1	RELAY, 120V, RH2B-UL-AC120	
4	9.802-467.0	1	BASE, RELAY, SH2B-05, IDEC	
5	9.802-457.0	6"	RAIL TRACK	(TIME DELAY)
-	-	4"	RAIL TRACK	(AUTO START/STOP)
6	9.802-759.0	1	SCREW, 10/32" X 1/2" BH SOC, BLACK	(ALL MODELS EXCEPT 3-1100)
-	9.802-762.0	1	SCREW, 10/32" X 1-1/4" RH, SL, BLK	
-	-	2	SCREW, 10/32" X 1-1/4" RH, SL, BLK	(3-1100)
7	9.802-695.0	6	NUT, 10/32" KEP	
-	-	10	NUT, 10/32" KEP	(W/STANDOFF PLATE)
8	9.802-475.0	1	BOX, PLASTIC 8" X 8" X 4"	(3-1100)
-	9.802-476.0	1	BOX, PLASTIC 10" X 8" X 6" W/LID	(4-2000, 4-3000)
-	9.803-032.0	1	STANDOFF PLATE, ELECTRICAL BOX	(4-2000A,G) NOT SHOWN
9	9.803-038.0	1	BRACKET, SUPPORT FOR ELEC. BOX	
10	9.802-515.0	1	STRAIN RELIEF, 1/2" STRAIGHT, MED	
-	9.802-524.0	1	LOCKNUT, 1/2"	NOT SHOWN
11	9.802-518.0	2	STRAIN RELIEF, 3/4" STRAIGHT, LARGE	(4-2000, 4-3000)
-	-	1	STRAIN RELIEF, 3/4" STRAIGHT, LARGE	(3-1100)
-	9.802-526.0	2	LOCKNUT, 3/4"	(4-2000, 4-3000) NOT SHOWN
-	9.802-515.0	1	STRAIN RELIEF, 1/2" STRAIGHT, MED.	(3-1100)
-	9.802-524.0	1	H LOCKNUT, 1/2"	(3-1100)
12	9.802-428.0	4.25 ft.	CORD, SERVICE, 12/3 SJOWA	(3-1100)
-	9.802-429.0	13.33 ft.	CORD, SERVICE, SEO, 12/4	(4-2000B, C, F, H, 4-3000C, F, N)
-	9.802-430.0	1	GFCI, 240V 30A, W/36' 10-3 CORD	(4-2000A,G)
-	9.802-431.0	1	GFCI, 120V 20A, W/36' 12-3 CORD	(3-1100)
-	9.802-436.0	3.33 ft.	CORD, SERVICE, SEO 10/3	(4-2000A,G)
-	9.802-437.0	13.33 ft.	CORD, SERVICE, SEO, 10/4	(4-3000B,H )
13	-	1	MOTOR	SEE SPECIFICATIONS PAGES
14	9.802-788.0	10	NUT, 3/8" WHIZ LOC SS	(3-1100)
-	-	14	NUT, 3/8" WHIZ LOC SS	(4-2000, 4-3000)
-	8.718-887.0	4	NUT, 5/16" SS WHIZ LOC	(3-1100)
15	9.802-808.0	10	WASHER, 3/8", SAE, SS	(3-1100)

REF	PART NO.	QTY	DESCRIPTION	NOTES
-	-	14	WASHER, 3/8", SAE, SS	(4-2000, 4-3000)
-	9.802-805.0	4	WASHER, 5/16" FLAT SS	
16	9.802-520.0	1	STRAIN RELIEF, 3/4"	NOT SHOWN (3-1100D; 4-2000A,B,C,F,G,H)
-	9.802-522.0	1	STRAIN RELIEF	NOT SHOWN (4-3000B,C)
17	9.802-721.0	6	BOLT, 3/8" X 1" SS	(3-1100)
-	-	10	BOLT, 3/8" X 1" SS	(4-2000, 4-3000)
-	8.718-619.0	4	BOLT, 5/16" X 3/4" SS	(3-1100)
18	9.802-774.0	2	NUT, 1/4" ESNA, NC, SS	
19	9.800-016.0	1	LABEL, DISCONNECT POWER SUPPLY	
20	9.800-040.0	1	LABEL, GROUND	NOT SHOWN
21	9.802-724.0	4	BOLT, 3/8" X 1-1/2", HH NC, SS	
22	8.932-969.0	1	LABEL, GFCI WARNING	
23	9.802-067.0	4	BUMPER PAD, ENGINE	
24	9.802-066.0	4	PAD, SOFT RUBBER, DURO 50	
25	9.802-818.0	4	WASHER, 3/8" X 1", SS	
26	9.802-760.0	4	SCREW, 1/4" X 1/2", BH SOL C/S SS	
27	9.802-812.0	4	WASHER, 7/16" X 2-1/2", ZINC	
28	8.718-568.0	4	WASHER, 1/4" FLAT RUBBER, BACK SS	
29	-	1	PUMP	SEE SPECIFICATIONS PAGES
30	8.718-682.0	2	BOLT, 3/8" X 3-1/2", TAP, SS	
31	9.803-136.0	1	RETAINER, PUMP TAKE UP	
32	9.802-827.0	2	NUT, 3/8", SS	
33	9.802-808.0	2	WASHER, SAE, FLAT, SS	
34	9.803-131.0	1	RAIL, PUMP	
35	9.803-127.0	1	COVER, ACCESS HOLE, SEA	
36	9.802-254.0	1.66 ft.	HOSE, 1/4" PUSH-ON	
37	9.802-259.0	1.3 ft.	HOSE, 1/2" PUSH-ON	
38	9.802-151.0	2	SWIVEL, 1/2" JIC FEM, PUSH-ON	
39	8.918-422.0	1	HOSE, 3/8" X 20", 2 WIRE, PRESSURE LOOP	
40	9.802-131.0	1	ELBOW, 1/2" JIC X 3/8", 90°BRASS	
41	9.802-039.0	1	ELBOW, 1/2" JIC X 3/8", 90°STEEL	
42	8.912-141.0	1	COVER, SEA, STAINLESS STEEL	
43	9.802-071.0	8.25 ft.	TRIM, 1/16", BLACK	
44	8.900-826.0	1	LABEL, WARNING INSTRUCTIONS	
45	8.932-965.0	1	LABEL, WARNING - EXPOSED PULLEYS	
46	8.900-832.0	2	LABEL, SEA SERIES STRIPE	
47	8.719-002.0	4	WASHER, 5/16" X 1-1/4", FENDER SS	
48	8.718-757.0	6	SCREW, 1/4" X 1/2" SS, PHIL, PH	
49	9.802-073.0	3.5 ft.	WEATHER-STRIP, 1/8" X 1/2"	

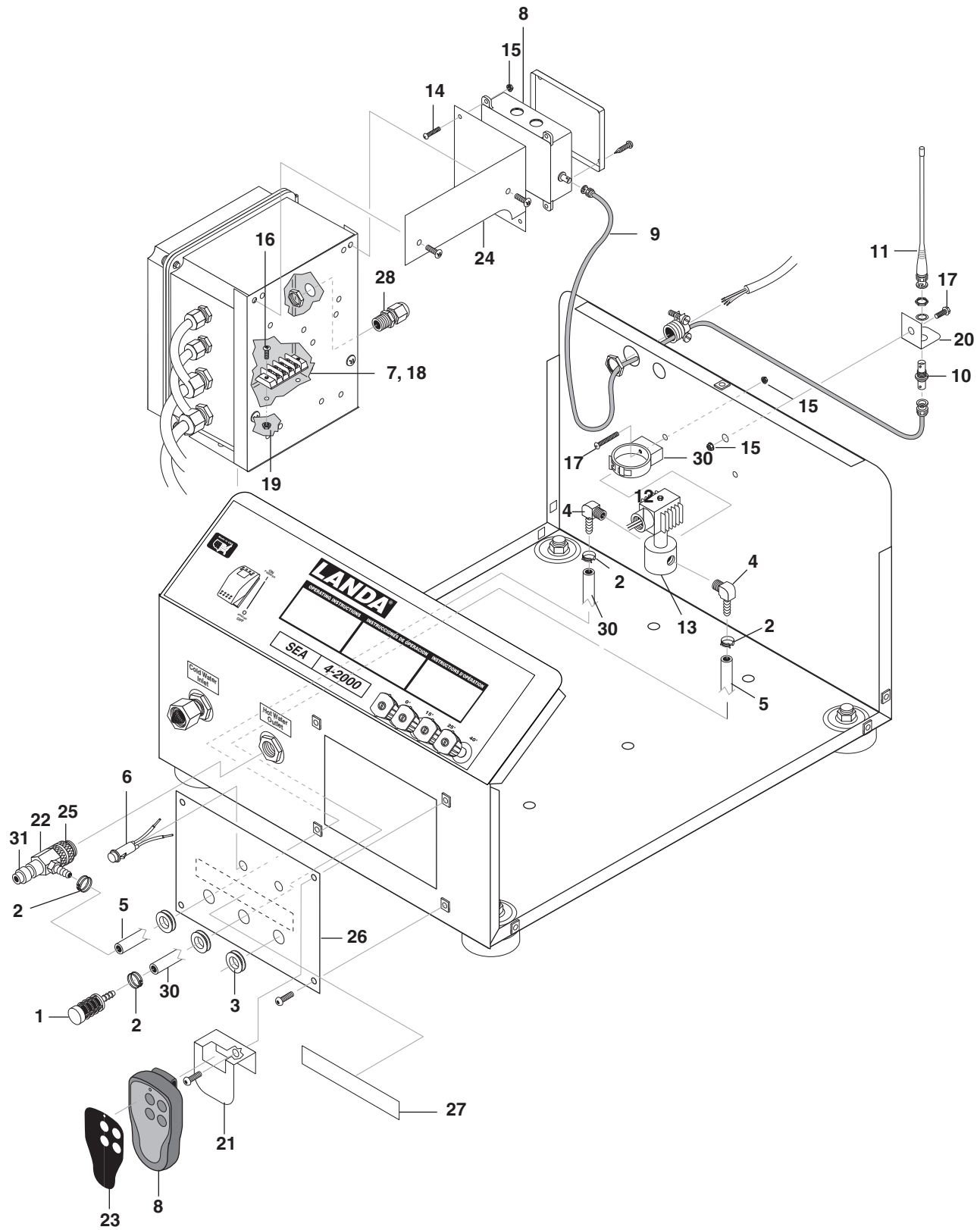
REF	PART NO.	QTY	DESCRIPTION	NOTES
50	-	1	MOTOR BUSHING	SEE SPECIFICATIONS PAGES
51	-	1	PUMP BUSHING	SEE SPECIFICATIONS PAGES
52	-	1	MOTOR PULLEY	SEE SPECIFICATIONS PAGES
53	-	1	PUMP PULLEY	SEE SPECIFICATIONS PAGES
54	-	2	BELT	SEE SPECIFICATIONS PAGES
55	9.802-452.0	1	SWITCH, ROCKER, CARLING, M-CIRCUIT, RED	
-	9.802-451.0	1	SWITCH, ROCKER, CARLING, W/GREEN LIGHT	(AUTO START OPTION)
56	8.712-357.0	1	NOZZLE, 00055, RED	(3-1100)
-	8.712-358.0	1	NOZZLE, 15055, YELLOW	(3-1100)
-	8.712-359.0	1	NOZZLE, 25055, GREEN	(3-1100)
-	8.712-360.0	1	NOZZLE, 40055, WHITE	(3-1100)
-	8.712-361.0	1	NOZZLE, 0006, RED	(ALL 4-2000 MODELS EXCEPT 4-20024F)
-	8.712-362.0	1	NOZZLE, 1506, YELLOW	(ALL 4-2000 MODELS EXCEPT 4-20024F)
-	8.712-363.0	1	NOZZLE, 2506, GREEN	(ALL 4-2000 MODELS EXCEPT 4-20024F)
-	8.712-364.0	1	NOZZLE, 4006, WHITE	(ALL 4-2000 MODELS EXCEPT 4-20024F)
-	8.712-349.0	1	NOZZLE, 0004.5, RED	(4-3000)
-	8.712-345.0	1	NOZZLE, 1504.5, YELLOW	(4-3000)
-	8.712-351.0	1	NOZZLE, 2504.5, GREEN	(4-3000)
-	8.712-352.0	1	NOZZLE, 4004.5, WHITE	(4-3000)
-	8.712-353.0	1	NOZZLE, 0005, RED	(4-20024F)
-	8.712-354.0	1	NOZZLE, 1505, YELLOW	(4-20024F)
-	8.712-355.0	1	NOZZLE, 2505, GREEN	(4-20024F)
-	8.712-356.0	1	NOZZLE, 4005, WHITE	(4-20024F)
57	9.802-064.0	4	GROMMET, RUBBER, NOZZLE HOLDER	
58	9.802-074.0	12	NUT, 1/4" SQUARE HEAD	
59	8.912-140.0	1	CABINET, SEA, SS	
60	9.802-522.0	1	STRAIN RELIEF,	
61	8.900-262.0	1	LABEL, SEA CONTROL PANEL	
62	8.900-253.0	1	LABEL, SEA	
63	8.900-403.0	1	LABEL, 3-1100	
-	8.900-409.0	1	LABEL, 4-2000	
-	8.900-411.0	1	LABEL, 4-3000	
64	9.800-020.0	1	LABEL, COLD WATER INLET	
65	8.932-970.0	1	LABEL, COLD WATER OUTLET	
66	8.707-000.0	1	CONNECTOR, 1/2" ANCHOR	
67	8.755-033.0	1	BULKHEAD, 3/8" FXF NPT, STEEL	
68	9.802-146.0	1	SWIVEL, 1/2" MP X 3/4" GHP W/STRAINER ST MALE	
69	9.802-171.0	1	NIPPLE, 3/8" X 3/8" NPT	
70	9.802-514.0	1	STRAIN RELIEF, 1/2" SMALL	



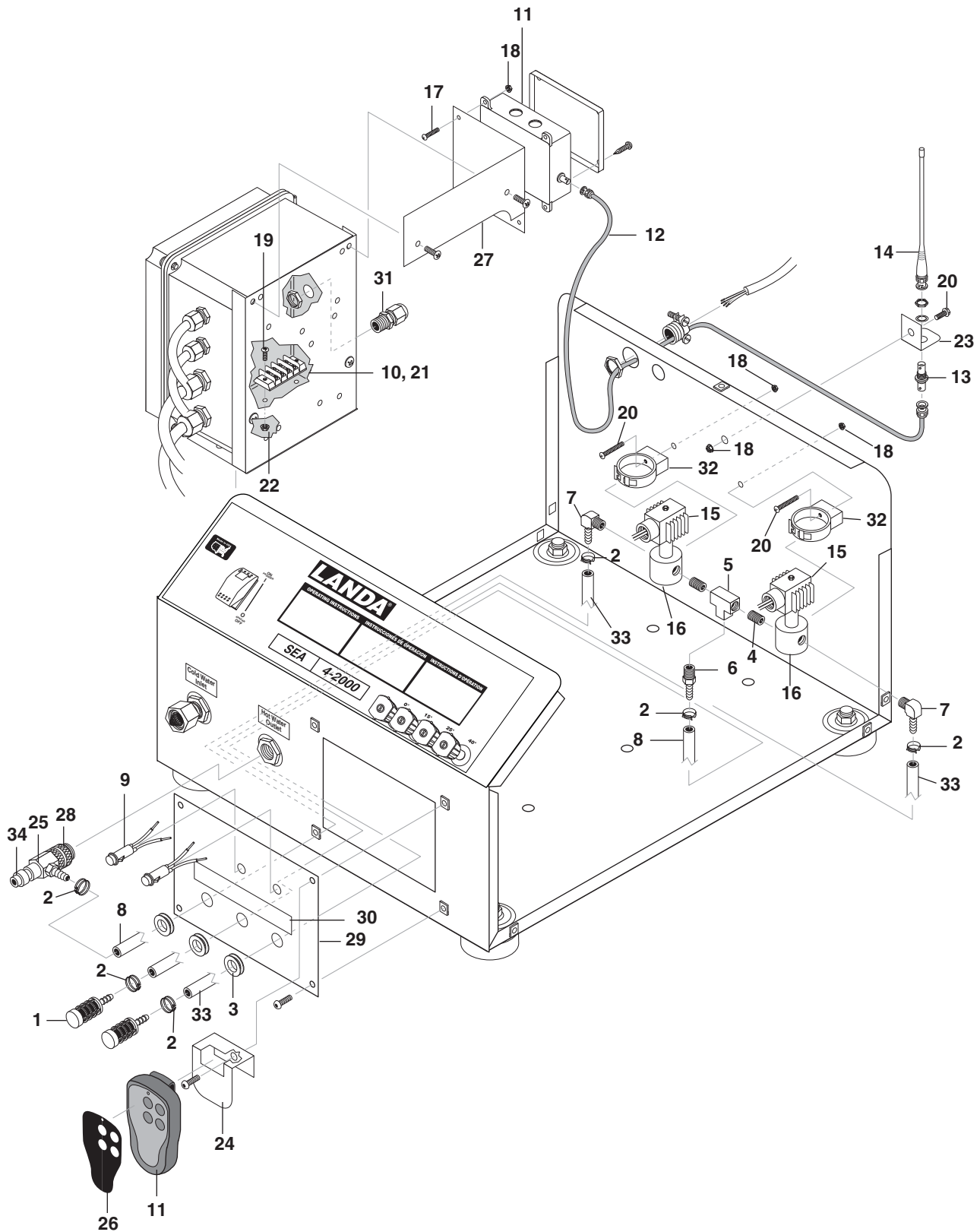
REF	PART NO.	QTY	DESCRIPTION	NOTES
71	9.800-049.0	1	LABEL, MANUFACTURERS CLEANING SOLUTION	
72	9.802-774.0	4	NUT, 1/4 ESNA NC, SS	
73	8.718-965.0	8	WASHER, 1/4 FLAT, SS	
74	8.718-603.0	-	BOLT, 1/4 X 3/4, NC HH, SS	
75	8.718-568.0	-	WASHER, 1/4" FLAT RUBBER, BACK SS	



REF	PART NO.	QTY	DESCRIPTION	NOTES
1	8.912-142.0	1	CABINET, SEA W/FLOAT TANK OPTION	
2	8.912-148.0	1	COVER, ACCESS HOLE, SEA W/VALVE HOLE	
3	8.706-755.0	1	BUSHING, 7/8"	
4	9.802-251.0	8 ft.	TUBE, 1/4" X 1/2" CLEAR VINYL	
5	8.707-058.0	1	STRAINER, W/CHECK VALVE 1/4" HOSE BARB	
6	8.707-317.0	1	VLAVE, FLOW CONTROL	
7	8.706-958.0	2	HOSE BARB, 1/4" BARB X 1/4" PIPE, 90°	
8	8.900-825.0	1	LABEL, CHEMICAL CONTROL VALVE	
9	9.802-171.0	1	NIPPLE, 3/8" X 3/8" NPT ST MALE	
10	8.755-033.0	1	BULKHEAD, 3/8" FXF NPT, STEEL1	
11	9.802-518.0	1	STRAIN RELIEF, STRT LQ TITE	
12	8.718-619.0	4	BOLT, 5/16" X 3/4" NC, GRADE 5, SS	
13	9.802-805.0	4	WASHER, 5/16" FLAT, SAE SS	
14	9.803-532.0	4	ISOLATOR, 5/16" THRD, FEM. X FEM., 1" X 1"	
15	9.802-708.0	4	SCREW, 5/16"-18 X 3/4" MPH TRH	
16	9.804-082.0	4	WASHER, 1/4" SAE, BLACK, ZINC	
17	8.912-233.0	1	LID & HINGES, PLASTIC FLOAT TANK	
18	8.900-832.0	1	LABEL, STRIPE	
19	8.706-829.0	1	ELBOW, 1/2" STREET, BRASS	
20	8.711-841.0	1	CONNECTOR, 8" GARDEN HOSE	
21	9.802-084.0	1	TANK, PLASTIC UNIVERSAL FLOAT	
22	8.707-000.0	2	CONNECTOR, 1/2" ANCHOR	
23	9.802-823.0	1	NUT, 5/16"-8, WING, SS	
24	9.802-805.0	1	WASHER, 5/16" FLAT, SAE, SS	
25	9.802-263.0	1.5"	TUBING, 5/16" X 9/16", 50/60 DURO, RUBBER	
26	9.802-822.0	1	SCREW, 5/16"-18 X 1-1/2" SS, BUTTON SOCKET	
27	8.719-039.0	2	WASHER, 1-3/16" X 2-1/4", STL RUBBER	
28	8.706-512.0	1	BALL, FLOAT, BLACK PLASTIC	
29	9.802-158.0	1	STEM, 4" FLOAT	
30	8.749-328.0	1	VALVE, 1/2", PLASTIC FLOAT	
31	8.706-797.0	1	NIPPLE, 1/2" HEX	
32	8.707-061.0	1	STRAINER, 1/2" BASKET	
33	9.802-128.0	1	NIPPLE, 1/2" JIC X 1/2" MPT PIPE	
34	9.800-049.0	1	LABEL, MANUFACTURER CLEANING SOLUTIONS	
35	9.802-105.0	1	PLUG, 7/8" HOLE	(REMOVE PLUG WHEN USED W/REMOTE SWITCH OPTION 8.903-461.0)
36	9.800-016.0	1	LABEL, DISCONNECT POWER SUPPLY	
37	9.802-810.0	1	WASHER, 5/8" FLAT SAE ZINC	
38	8.719-011.0	1	WASHER, 5/8" STAR	
39	8.924-771.0	-	ASSY, FLOAT TANK, SEASS CAB	REPLACEMENT ASSY

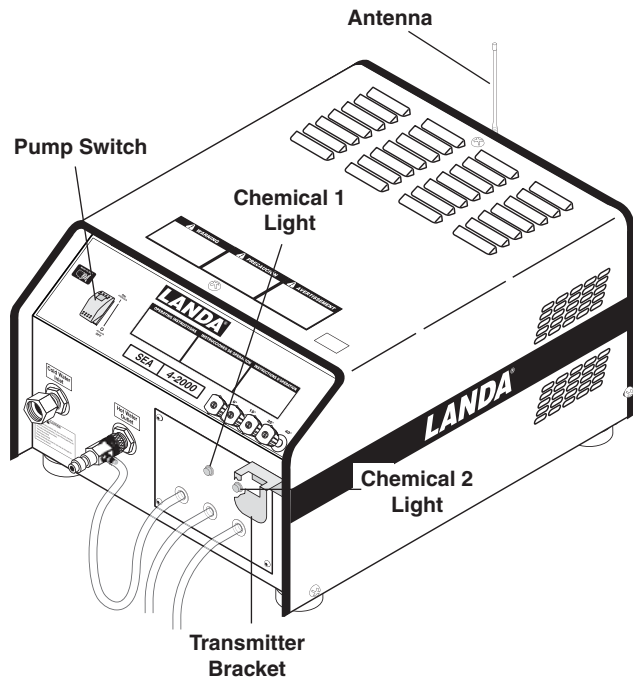


REF	PART NO.	QTY	DESCRIPTION	NOTES
1	8.707-057.0	2	STRAINER, PLASTIC 1/4" HOSE BARB	
2	6.390-126.0	4	CLAMP, HOSE, .46-, .54 ST	
3	8.706-538.0	3	GROMMET, 1.375 OD X .75 ID X 3/8"	
4	8.712-801.0	2	HOSE BARB, 1/4" BARB X 1/4" PIPE 90°	
5	9.802-251.0	6 ft.	TUBE, 1/4" X 1/2", CLEAR VINYL	
6	9.802-455.0	1	LIGHT, INDICATOR, GREEN 125V	
7	9.802-491.0	1	BLOCK, TERMINAL, 4 POLE	
8	8.716-442.0	1	WIRELESS, TRANSMITTER-RECEIVER,4 RELAY	
9	8.716-444.0	1	CABLE, RADIO REMOTE, COAXIAL CABLE	
10	8.716-445.0	1	CONNECTOR, RADIO REMOTE, BULKHEAD BNC-BNC	
11	8.716-446.0	1	ANTENNA, RADIO REMOTE, BNC CONNECTION	
12	8.725-433.0	1	VALVE, SOLENOID DEMA 482-2-C-6, 120V 04F20C2118AAF	
13	9.802-533.0	1	SOLENOID COIL, 120V AF4C05	
14	8.718-569.0	4	SCREW, 10-32 X 1/2 PL RDH PH	
15	9.802-695.0	5	NUT, 10/32" KEPS	
16	8.718-749.0	2	SCREW, 8/32" X 3/4" SS PHIL	
17	9.802-764.0	2	SCREW, 10/32" X 3/4" HH	
18	9.802-494.0	2	BAR, JUMPER	NOT SHOWN
19	9.802-785.0	2	NUT, 8/32", KEPS	
20	8.912-674.0	1	BRACKET, ANTENNA MOUNT WIRELESS REMOTE	
21	8.912-675.0	1	BRACKET, TRANSMITTER, WIRELESS REMOTE	
22	8.904-203.0	1	AMERIMAX 24" ACID INS. 3-5 GPM	
23	8.930-156.0	1	LABEL, LANDA SEA, LANCOM REMOTE CONTROL	
24	8.930-164.0	1	BASE, LANCOM RECEIVER, -07	
25	9.802-166.0	1	3/8 COUPLER FEMNIC BRASS	
26	8.930-166.0	1	COVER, ACCESS HOLE, LANCOM, -07	
27	8.930-167.0	1	LABEL, CHEMICAL, WIRELESS	
28	9.802-514.0	1	STRAIN RELIEF, SMALL	
29	8.706-423.0	1	HANGER PIPE 1"	
30	9.802-251.0	10 ft	TUBE, 1/4" X 1/2" CLEAR VINYL	
31	9.802-170.0	1	NIPPLE, 3/8" X 3/8" NPT, ST, FEM	



REF	PART NO.	QTY	DESCRIPTION	NOTES
1	8.707-057.0	2	STRAINER, PLASTIC 1/4" HOSE BARB	
2	6.390-126.0	6	CLAMP, HOSE, .46-, .54 ST	
3	8.706-538.0	3	GROMMET, 1.375 OD X .75 ID X 3/8"	
4	8.706-777.0	2	NIPPLE, 1/4" CLOSE	
5	8.706-841.0	1	TEE, 1/4" FEMALE	
6	8.706-941.0	1	HOSE BARB, 1/4" BARB X 1/4" ML PIPE	
7	8.712-801.0	2	HOSE BARB, 1/4" BARB X 1/4" PIPE 90°	
8	9.802-251.0	6 ft.	TUBE, 1/4" X 1/2", CLEAR VINYL	
9	9.802-455.0	2	LIGHT, INDICATOR, GREEN 125V	
10	9.802-491.0	1	BLOCK, TERMINAL, 4 POLE	
11	8.716-442.0	1	WIRELESS, TRANSMITTER-RECEIVER, 4 RELAY	
12	8.716-444.0	1	CABLE, RADIO REMOTE, CC58C-5 COAXIAL CABLE	
13	8.716-445.0	1	CONNECTOR, RADIO REMOTE, BULKHEAD BNC-BNC	
14	8.716-446.0	1	ANTENNA, RADIO REMOTE, BNC CONNECTION	
15	8.725-433.0	2	VALVE, SOLENOID DEMA 482-2-C-6, 120V 04F20C2118AAF	
16	9.802-533.0	2	SOLENOID COIL, 120V AF4C05	
17	8.718-569.0	4	SCREW, 10-32 X 1/2 PL RDH PH	
18	9.802-695.0	6	NUT, 10/32" KEPS	
19	8.718-749.0	2	SCREW, 8/32" X 3/4" SS PHIL	
20	9.802-764.0	3	SCREW, 10/32" X 3/4" HH	
21	9.802-494.0	2	BAR, JUMPER	NOT SHOWN
22	9.802-785.0	2	NUT, 8/32", KEPS	
23	8.912-674.0	1	BRACKET, ANTENNA MOUNT WIRELESS REMOTE	
24	8.912-675.0	1	BRACKET, TRANSMITTER, WIRELESS REMOTE	
25	8.904-203.0	1	AMERIMAX 24" ACID INS. 3-5 GPM	
26	8.930-156.0	1	LABEL, LANDA SEA, LANCOM REMOTE CONTROL	
27	8.930-164.0	1	BASE, LANCOM RECEIVER, -07	
28	9.802-166.0	1	3/8 COUPLER FEMNIC BRASS	
29	8.930-166.0	1	COVER, ACCESS HOLE, LANCOM, -07	
30	8.930-167.0	1	LABEL, CHEMICAL, WIRELESS	
31	9.802-514.0	1	STRAIN RELIEF, SMALL	
32	8.706-423.0	2	HANGER PIPE 1"	
33	9.802-251.0	10 ft	TUBE, 1/4" X 1/2" CLEAR VINYL	
34	9.802-170.0	1	NIPPLE, 3/8" X 3/8" NPT, ST, FEM	

## Handheld Wireless Operating Instructions

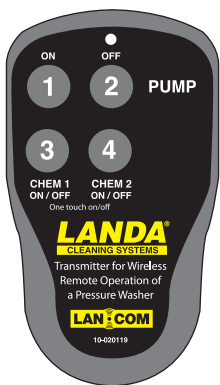


When machine is not in use, push control panel pump switch to the "OFF" position. Store transmitter on the transmitter bracket.

*NOTE: Normal operating range for the transmitter is about 500 feet interference-free (line of site); 300 feet light interference (inside warehouse, pallet shelves); and 100 feet heavy interference (through concrete/stone walls, metal doors). If greater range is desired, the antenna can be mounted at a separate location. This requires a longer cable - RG-58-U coaxial with BNC end connectors.*

### For Wireless Remote Control Operation

**Step 1:** Push the control panel pump switch to the "ON" position (first click). With the switch in this position the wireless remote is ready for use.



Transmitter

**Step 2:** To control pressure washer in remote mode, press transmitter button 1 to turn pump "ON". Press transmitter button 2 to turn pump "OFF". Pump can also be controlled manually by pressing the control panel pump ON/OFF switch.

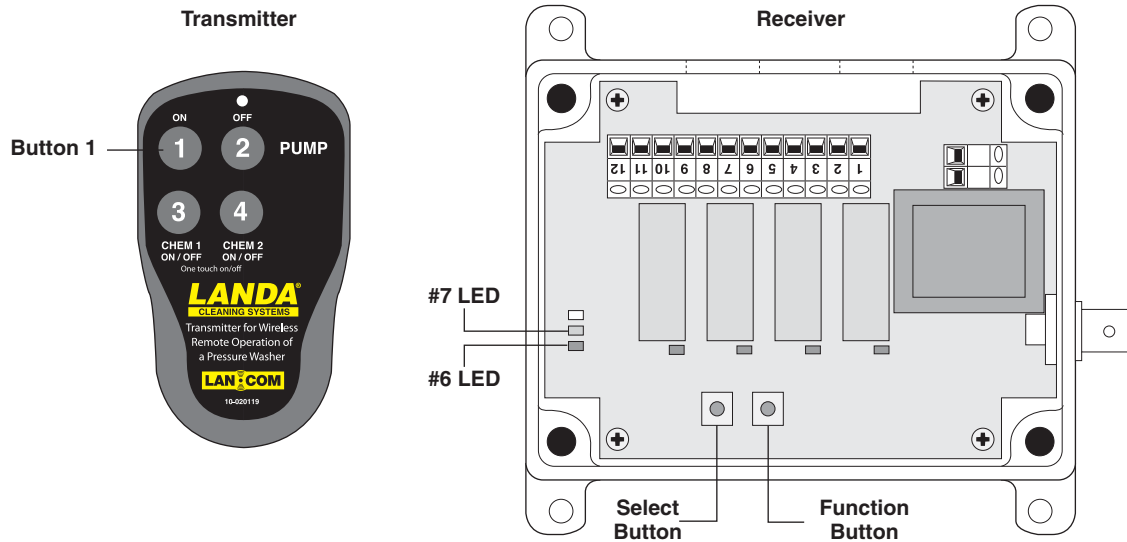
**Chemical 1:** To start chemical 1 flow, press transmitter button 3. The green indicator light will illuminate when chemical 1 is in use. Press button 3 again to stop chemical 1 flow.

**Chemical 2:** To start chemical 2 flow, press transmitter button 4. The green indicator light will illuminate when chemical 2 is in use. Press button 4 again to stop chemical 2 flow.



## Transmitter/Receiver Communication Set-up at Factory

Programming communication between the receiver and transmitter requires the removal of the receiver enclosure lid. The receiver must have 120V power. This process utilizes the Function/Select buttons on the main panel control board (PCB) of the receiver (See Figure below). A number of colored LED's are used to indicate various steps in the programming process (See Figure below). It is recommended that this process is not done while wired to the machine.



## Receiver Programming LED's and Programming Switches

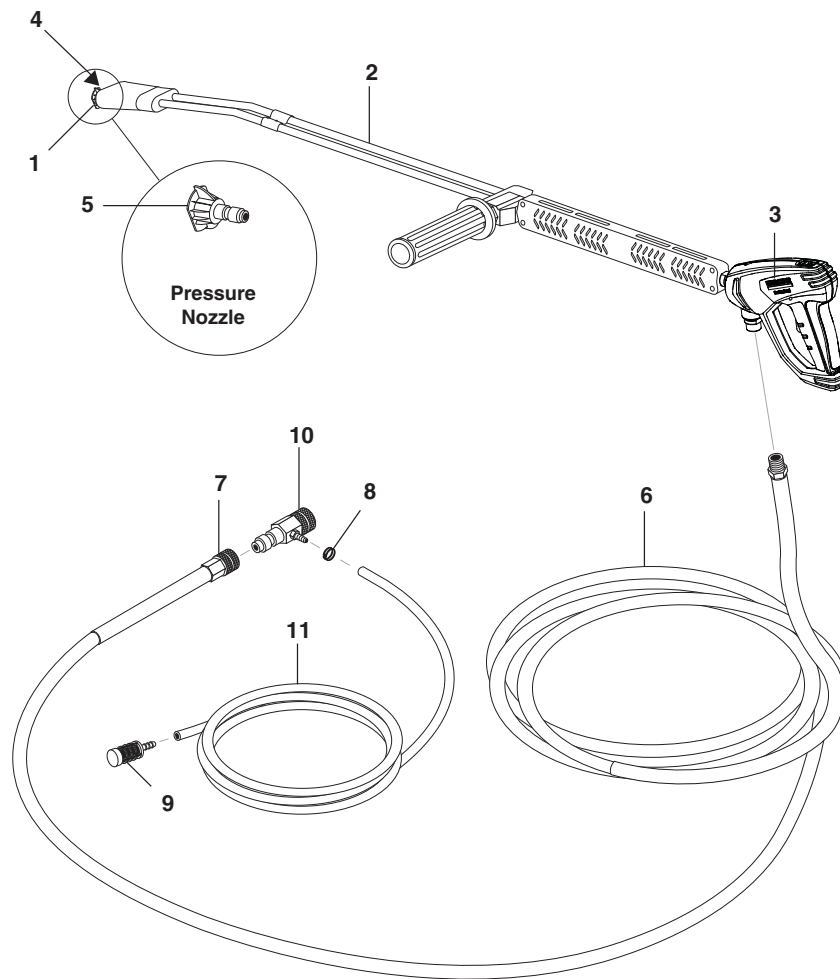
The T60-04CRV receiver programming process is as follows: While programming, make sure there are no other transmitters are transmitting in the area.

1. Press the **Function** button once to select the "Learn Code" mode. (#6 Red LED lights, you have approximately 5 seconds to make the next selection.)
2. Press the **Select** button once and then press any button on the transmitter and hold. (#6 Red LED will blink on/off three times and go out. After releasing the transmitter button, the relays will respond to the appropriate buttons (Button 1/R1; Button 2/R2; Button 3/R3; Button 4/R4); and the #6 red LED will blink on/off indicating that one or more adjustable codes have been learned by this receiver.
3. Press and hold the **Select** button for 6-8 seconds so the yellow LED is on solid. (#7 Yellow LED lights)

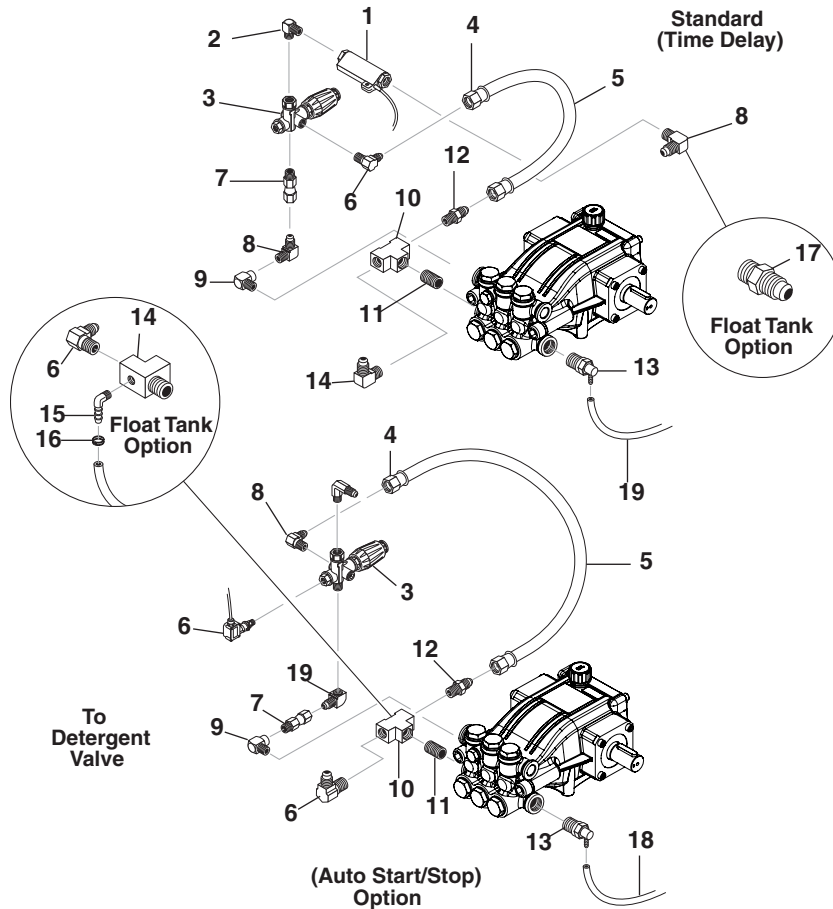
*NOTE: This step is only completed when establishing the first transmitter communication.*

The receiver is now programmed to the desired transmitter.

## Hose And Spray Gun



REF	PART NO.	QTY	DESCRIPTION	NOTES
1	9.802-165.0	1	COUPLER, 1/4" MALE	
-	9.802-096.0	1	QUICK COUPLER, O-RING, SM.	NOT SHOWN
2	8.711-293.0	1	WAND, VP ZINC 1/4", AL 344 W/COUPLER, W/SOAP NOZZLE	
-	83-SSVPKIT	1	REPAIR KIT, AR STAINLESS SEAT	
3	4.775-054.0	1	EASY! FORCE ADVANCED KNA	
4	9.802-286.0	1	SOAP NOZZLE ONLY, 1/8", BRASS	
5	-	1	SEE PG. 24 FOR CORRECT NOZZLES	
6	8.739-072.0	1	HOSE, 3/8" X 50', 2-WIRE TUFF SKIN	
7	9.802-166.0	1	COUPLER, 3/8", FEMALE	
-	9.802-100.0	1	QUICK COUPLER, O-RING LG.	NOT SHOWN
8	6.390-126.0	1	CLAMP, HOSE, .46-, .54 ST	
9	8.707-057.0	1	STRAINER, 1/4" HOSE BARB	
10	9.802-216.0	1	INJECTOR, DETERGENT, NON ADJUST, #3	
11	9.802-251.0	6 ft.	TUBE, 1/4" X 1/2", CLEAR VINYL	
12	8.707-139.0	1	COUPLER, 1/4" PLUG, MALE, STEEL/ZINC	
13	9.802-164.0	1	COUPLER, 1/4" SOCKET, FEMALE, BRASS	



REF	PART NO.	QTY	DESCRIPTION	NOTES
1	8.933-006.0	1	SWITCH, FLOW MV60	
2	8.706-168.0	1	ELBOW, 3/8", MALE, PIPE, STEEL	
3	8.750-298.0	1	UNLOADER, VRT3, 8 GPM @ 3630 PSI	
-	9.802-362.0	1	UNLOADER, VB8 W/SWITCH (AUTO	
4	9.802-151.0	2	SWIVEL, 1/2" JIC, 1/2" BARB BRASS	
5	9.802-259.0	20"	HOSE, 1/2" PUSH-ON	
6	9.802-129.0	1	ELBOW, 1/2" MSAE X 3/8", MPT BRASS	
7	9.802-048.0	1	SWIVEL, 1/2" JIC FEM, 3/8" MALE, STEEL	
8	9.802-039.0	2	ELBOW, 1/2" JIC, X 3/8" MPT 90° STEEL	
9	8.706-207.0	1	ELBOW, 3/8" STREET 90°, STEEL	
10	8.706-844.0	1	TEE, 1/2" FEMALE, PIPE, BRASS	
11	8.706-790.0	1	NIPPLE, 1/2" CLOSE	
12	9.802-128.0	1	NIPPLE, 1/2" JIC X 1/2" MPT BRASS	
13	9.803-670.0	1	PUMP PROTECTOR, 1/2" 190°	
14	9.802-123.0	1	TEE, 1/2" W/1/8" PT HOLE	
15	8.706-955.0	1	HOSE BARB, 1/4" X 1/8" MPT BRASS	
16	6.390-126.0	1	CLAMP, HOSE, .46-, .54 ST	
17	9.802-036.0	1	NIPPLE, 1/2 JIC X 3/8 MPT, STEEL	
18	9.802-254.0	20"	HOSE, 1/4 PUSH-ON	
19	9.802-042.0	1	ELBOW, 1/2" JIC X 3/8", FEM 90°	

## Specifications

### Pump Specifications

Machine	Model	Part #	Pulley	Pulley Part #	Bushing	Bushing Part #
3-11024D	LB3030	8.923-753.0	AK74H	9.802-369.0	24MM	9.802-402.0
4-20024A	LT6036	8.921-712.0	2AK84H	8.715-538.0	25MM	9.802-403.0
4-20024B	LT6036	8.921-712.0	2AK84H	8.715-538.0	25MM	9.802-403.0
4-20024C	LT6036	8.921-712.0	2AK84H	8.715-538.0	25MM	9.802-403.0
4-20024G	LT6036	8.921-712.0	2AK94H	9.803-548.0	25MM	9.802-403.0
4-20024H	LT6036	8.921-712.0	2AK84H	8.715-538.0	25MM	9.802-403.0
4-30024B	LT6036	8.921-712.0	2BK90H	8.715-593.0	25MM	9.802-403.0
4-30024C	LT6036	8.921-712.0	2BK90H	8.715-593.0	25MM	9.802-403.0

### Motor Specifications

Machine	Model	Size	Voltage /PH/ Hertz	Part #	Pulley	Pulley Part #
3-11024D	LB3030	2HP	120V/1PH/60	8.754-710.0	AK32X5/8"	9.804-004.0
4-20024A	LT6036	6 HP	230V/1PH/60	9.802-336.0	2AK51H	8.715-549.0
4-20024B	LT6036	6 HP	230V/3PH/60	8.751-004.0	2AK51H	8.715-549.0
4-20024C	LT6036	6 HP	460V/3PH/60	8.751-004.0	2AK51H	8.715-549.0
4-20024G	LT6036	6 HP	208V/1PH/60	9.802-337.0	2AK56H	9.802-373.0
4-20024H	LT6036	6 HP	208V/3PH/60	8.756-426.0	2AK51H	8.715-549.0
4-30024B	LT6036	7.5 HP	230V/3PH/60	8.755-604.0	2BK50H	8.715-583.0
4-30024C	LT6036	7.5 HP	460V/3PH/60	8.755-604.0	2BK50H	8.715-583.0

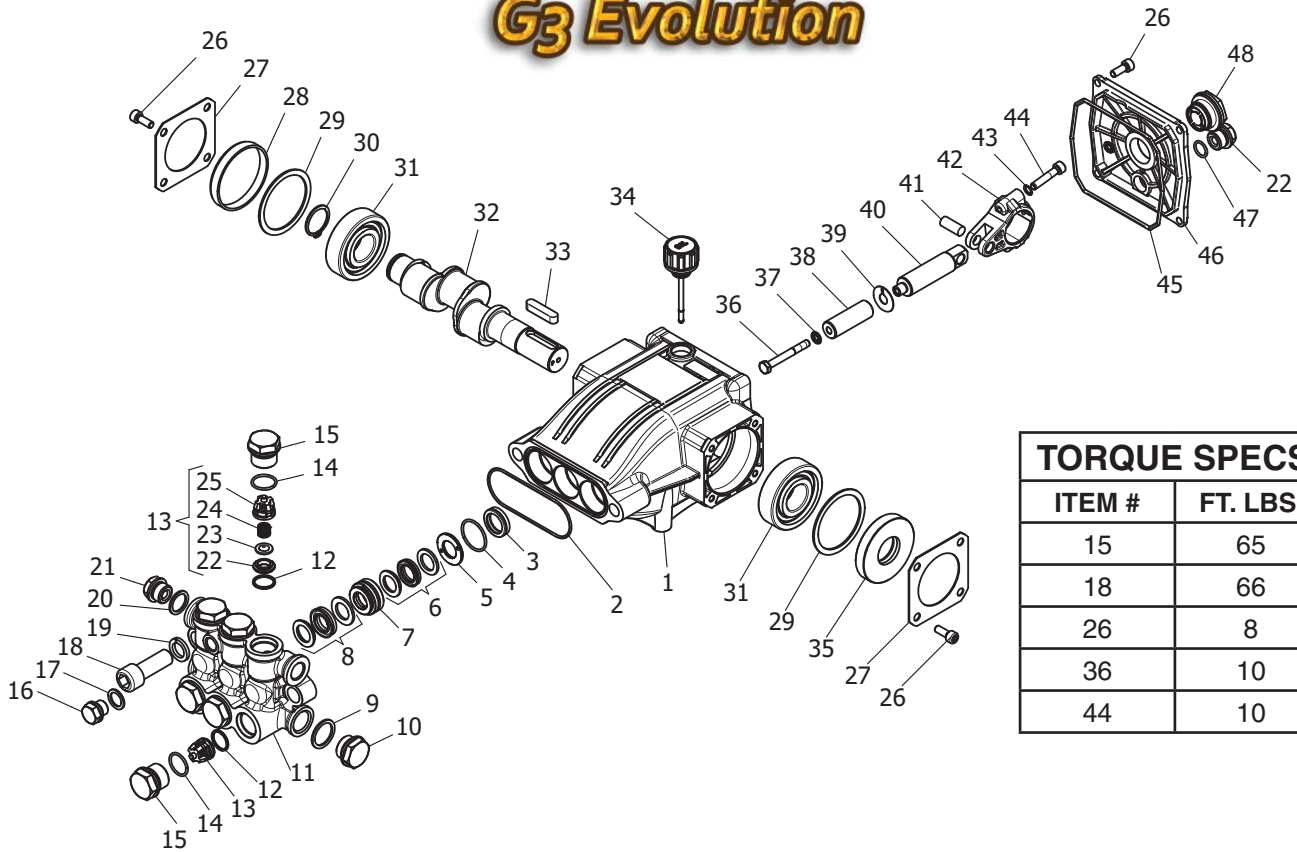
### Motor Specifications

Machine	Model	Model	Bushing	Bushing Part #	Belt Size Qty	Part #
3-11024D	LB3030	3-11D	N/A	N/A	AX33 (1)	9.803-896.0
4-20024A	LT6036	4-2A	HX1-1/8"	9.802-400.0	AX34 (2)	9.802-407.0
4-20024B	LT6036	4-2B	HX1-1/8"	9.802-400.0	AX34 (2)	9.802-407.0
4-20024C	LT6036	4-2C	HX1-1/8"	9.802-400.0	AX34 (2)	9.802-407.0
4-20024G	LT6036	4-2G	HX1-1/8"	9.802-400.0	AX38 (2)	9.802-441.0
4-20024H	LT6036	4-2H	HX1-1/8"	9.802-400.0	AX34 (2)	9.802-407.0
4-30024B	LT6036	4-3B	HX1-3/8"	9.802-401.0	BX36 (2)	8.715-697.0
4-30024C	LT6036	4-3C	HX1-3/8"	9.802-401.0	BX36 (2)	8.715-697.0

*Controls Specifications*

<b>Machine</b>	<b>Model</b>	<b>Contactora</b>	<b>Overload</b>	<b>Stepdown Transformer</b>	<b>Primary Fuse</b>	<b>Primary Fuse Part #</b>	<b>Secondary Fuse</b>	<b>Secondary Fuse Part #</b>
3-11024D	LB3030	8.724-276.0	N/A	N/A	N/A	N/A	N/A	N/A
4-20024A	LT6036	8.724-276.0	N/A	9.802-551.0	1a (2)	8.933-007.0	1/2 AMP (1)	9.802-463.0
4-20024B	LT6036	8.724-272.0	8.724-304.0	9.802-551.0	1a (2)	8.933-007.0	1/2 AMP (1)	9.802-463.0
4-20024C	LT6036	8.724-268.0	8.724-303.0	9.802-551.0	1/2a (2)	9.802-462.0	1/2 AMP (1)	9.802-463.0
4-20024G	LT6036	8.724-281.0	N/A	9.804-556.0	1a (2)	8.933-007.0	1/2 AMP (1)	9.802-463.0
4-20024H	LT6036	8.724-276.0	8.724-304.0	9.804-556.0	1a (2)	8.933-007.0	1/2 AMP (1)	9.802-463.0
4-30024B	LT6036	8.724-272.0	8.724-304.0	9.802-551.0	1a (2)	8.933-007.0	1/2 AMP (1)	9.802-463.0
4-30024C	LT6036	8.724-268.0	8.724-312.0	9.802-551.0	1/2a (2)	9.802-462.0	1/2 AMP (1)	9.802-463.0

# G3 Evolution



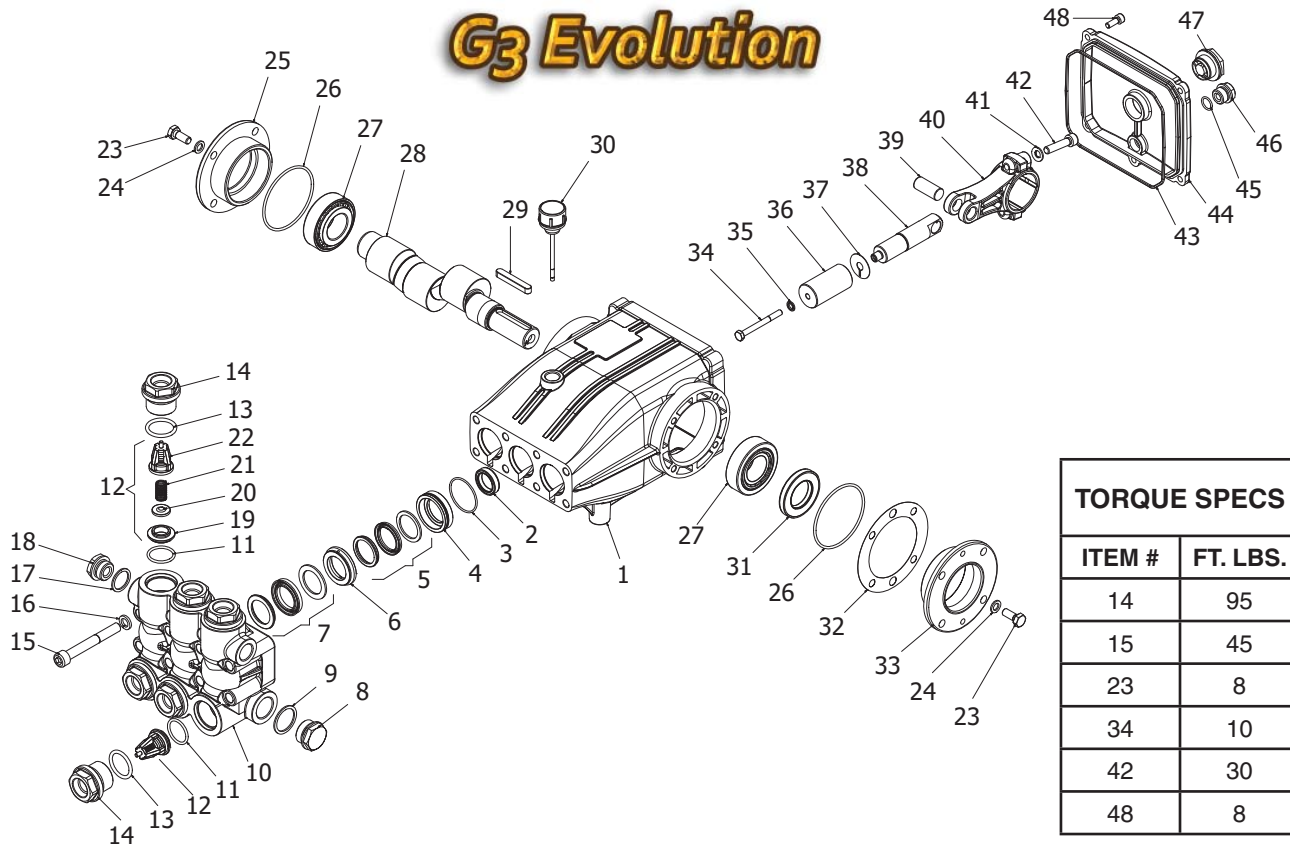
TORQUE SPECS	
ITEM #	FT. LBS.
15	65
18	66
26	8
36	10
44	10

REF	PART NO.	QTY	DESCRIPTION	NOTES
1	8.754-841.0	1	CRANKCASE	
2	8.754-846.0	1	O-RING Ø1.78 X 72.75	
3	-	3	PLUNGER OIL SEAL	SEE TABLE KITS
4	-	3	O-RING Ø1.78 X 26.7	SEE TABLE KITS
5	-	3	WASHER, PRESSURE RING 16 MM	SEE TABLE KITS
6	-	3	U-SEAL, 16 MM	SEE TABLE KITS
7	-	3	PRESSURE RING, 16 MM	SEE TABLE KITS
8	-	3	U-SEAL, 16 MM	SEE TABLE KITS
9	9.803-199.0	1	WASHER, COPPER G1/2	
10	9.802-926.0	1	PLUG, BRASS G1/2	
11	8.754-852.0	1	MANIFOLD	
12	8.717-233.0	6	O-RING Ø1.78 X 15.6	SEE TABLE KITS
13	-	6	VALVE ASSEMBLY	SEE TABLE KITS
14	9.803-948.0	6	O-RING Ø1.78 X 18.77	SEE TABLE KITS
15	9.803-949.0	6	VALVE PLUG	
16	8.754-851.0	1	PLUG, BRASS G1/4	
17	8.718-973.0	1	WASHER, COPPER G1/4	
18	8.754-854.0	2	BOLT, MANIFOLD M14 X 40	
19	8.754-850.0	2	WASHER, LOCK	

REF	PART NO.	QTY	DESCRIPTION	NOTES
20	9.803-198.0	1	WASHER, COPPER G3/8	
21	8.707-262.0	2	PLUG, BRASS G3/8	
22	-	6	VALVE SEAT	PART OF ITEM 13
23	-	6	VALVE PLATE	PART OF ITEM 13
24	-	6	VALVE SPRING	PART OF ITEM 13
25	-	6	VALVE CAGE	PART OF ITEM 13
26	9.802-939.0	12	SCREW, M6 X 16	
27	8.717-137.0	2	BEARING COVER	
28	9.803-954.0	1	BEARING SEAL	
29	8.754-843.0	2	SEAL SPACER, CRANKSHAFT	
30	9.802-914.0	1	SNAP RING, 25 MM	
31	9.803-955.0	2	BEARING, BALL	
32	8.754-829.0	1	SHAFT, 24 MM 3030	
-	8.754-830.0	1	SHAFT, 24 MM 4025	
33	9.803-167.0	1	KEY, CRANKSHAFT	
34	8.754-219.0	1	OIL DIPSTICK	
35	8.933-010.0	1	SEAL, CRANKSHAFT	
36	8.754-855.0	3	BOLT, PLUNGER	SEE TABLE KITS
37	8.754-092.0	3	SPACER, COPPER	SEE TABLE KITS
38	8.754-848.0	3	PLUNGER, 16 MM	SEE TABLE KITS
39	9.803-962.0	3	SPACER, COPPER	SEE TABLE KITS
40	8.754-827.0	3	PLUNGER ROD	
41	9.803-965.0	3	CONNECTING ROD PIN	
42	9.803-966.0	3	CONNECTING ROD	
43	9.803-218.0	6	WASHER, 6 MM	
44	8.933-020.0	6	SCREW, CONNECTING ROD	
45	8.754-847.0	1	O-RING Ø2.62 X 111.62	
46	8.754-842.0	1	COVER, CRANKCASE	
47	9.803-906.0	1	O-RING Ø1.78 X 14	
48	9.803-202.0	1	SIGHT GLASS, G3/4	

KIT NUMBERS	8.754-856.0	8.754-857.0	8.754-858.0	8.754-859.0	9.803-937.0
KIT DESCRIPTION	Plunger Seals 16 mm	Seal Packing 16 mm	Plunger 16 mm	Complete Valve	Plunger Oil Seals
ITEM NUMBERS INCLUDED	4, 6, 8	4, 5, 6, 7, 8	36, 37, 38, 39	12, 13, 14	3
NUMBER OF CYLINDERS KIT WILL SERVICE	3	1	1	6	3

# G3 Evolution



REF	PART NO.	QTY	DESCRIPTION	NOTES
1	8.752-825.0	1	CRANKCASE	
2	-	3	PLUNGER OIL SEAL	SEE KITS TABLE
3	-	3	O-RING Ø1.78 X 37.82	SEE KITS TABLE
4	-	3	PRESSURE RING, 18MM	SEE KITS TABLE
5	-	3	U-SEAL, 18MM	SEE KITS TABLE
6	-	3	INTERMEDIATE RING, 18MM	SEE KITS TABLE
7	-	3	U-SEAL, 18MM	SEE KITS TABLE
8	9.802-926.0	1	BRASS PLUG, G1/2	
9	9.803-199.0	1	COPPER WASHER 1/2	
10	8.753-816.0	1	MANIFOLD HOUSING	
11	9.804-498.0	6	O-RING Ø2.62 X 25.1	SEE KITS TABLE
12	-	6	VALVE ASSEMBLY	SEE KITS TABLE
13	9.803-193.0	6	O-RING 3068	SEE KITS TABLE
14	9.802-928.0	6	VALVE PLUG	
15	8.753-817.0	8	MANIFOLD STUD BOLT	
16	9.802-890.0	8	LOCK WASHER	
17	8.719-008.0	1	COPPER WASHER 3/8	
18	8.707-262.0	1	BRASS PLUG 3/8	
19	-	6	VALVE SEAT	PART OF ITEM 12
20	-	6	VALVE PLATE	PART OF ITEM 12



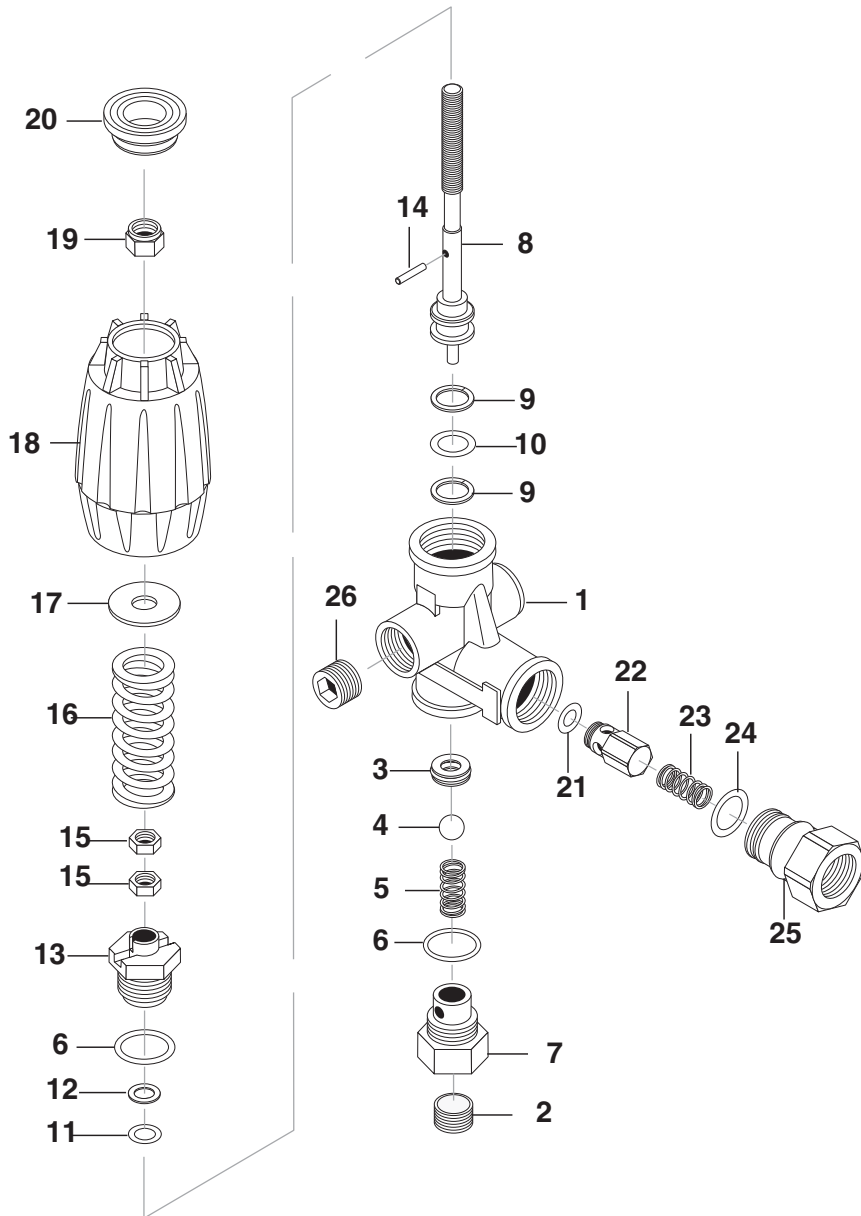
REF	PART NO.	QTY	DESCRIPTION	NOTES
21	-	6	VALVE SPRING	PART OF ITEM 12
22	-	6	VALVE CAGE	PART OF ITEM 12
23	8.752-830.0	8	HEX SCREW	
24	9.802-884.0	8	WASHER	
25	9.803-182.0	1	CLOSED BEARING HOUSING	
26	9.803-186.0	2	O-RING Ø2.62 X 71.12	
27	9.803-160.0	2	ROLLER BEARING	
28	8.753-818.0	1	CRANKSHAFT Ø25 (4540)	
-	8.752-827.0	1	CRANKSHAFT Ø25 (6036)	
29	9.803-167.0	1	CRANKSHAFT KEY	
30	8.752-834.0	1	OIL DIP STICK	
31	9.803-139.0	1	CRANKSHAFT SEAL	
32	9.803-177.0	2	SHIM	
33	9.803-181.0	1	BEARING HOUSING	
34	8.752-841.0	3	PLUNGER BOLT	SEE KITS TABLE
35	8.752-820.0	3	BONDED SEAL	SEE KITS TABLE
36	8.753-819.0	3	PLUNGER, 18MM	SEE KITS TABLE
37	8.752-823.0	3	COPPER SPACER	SEE KITS TABLE
38	8.753-820.0	3	PLUNGER ROD	
39	8.752-822.0	3	CONNECTING ROD PIN	
40	8.752-821.0	3	CONNECTING ROD	
41	9.802-889.0	6	SPRING WASHER	
42	9.802-937.0	6	CONNECTING ROD SCREW	
43	9.803-194.0	1	O-RING Ø2.62 X 152.07	
44	8.752-826.0	1	CRANKCASE COVER	
45	9.803-906.0	1	O-RING Ø1.78 X 14.00	
46	8.707-262.0	1	BRASS PLUG G3/8	
47	9.803-202.0	1	SIGHT GLASS G3/4	
48	8.752-824.0	5	COVER SCREW	

KIT NUMBERS	8.753-821.0	8.753-822.0	8.753-823.0	8.753-824.0	8.752-825.0
KIT DESCRIPTION	Plunger SEAls 16 mm	SEAl Packing 16 mm	Plunger 16 mm	Complete Valve	Plunger Oil SEAls
ITEM NUMBERS INCLUDED	3, 5, 7	3, 4, 5, 6, 7	34, 35, 36, 37	11, 12, 13	2
NUMBER OF CYLINDERS KIT WILL SERVICE	3	1	1	6	3

8.750-297.0, 8 GPM, 2320 PSI

8.750-298.0, 8 GPM, 3630 PSI

8.750-299.0, 8 GPM, 4500 PSI



REF	PART NO.	QTY	DESCRIPTION	NOTES
25	8.750-713.0	1	OUTLET FITTING	
18	8.750-712.0	1	KNOB, UNLOADER	
-	8.750-709.0	-	REPAIR KIT, VRT3, 2320/3630 PSI	
-	8.750-710.0	-	REPAIR KIT, VRT3, 4500 PSI	(KIT ITEMS: 3, 4, 6, 9-12, 21, 24)

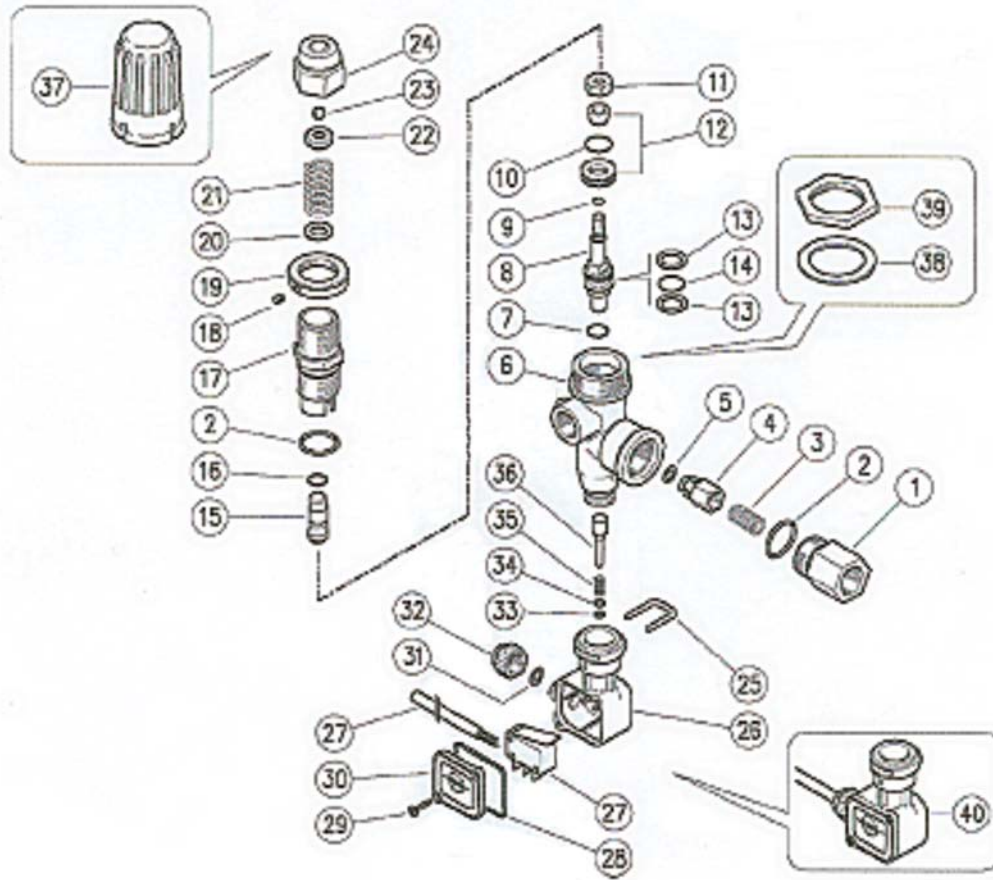
## Unloader Adjustment Procedures

1. Remove lock nut (Item 19).
2. Remove adjustment knob (Item 18).
3. Loosen the two (2) nuts (Item 15), move them upward on stem (Item 8) until you see 4 or more threads below the nut.
4. Re-attach adjusting knob (Item 18).
5. Start machine. Open the trigger of the spray gun. Increase pressure by turning adjustment knob (Item 18) clockwise until pressure is at the desired operating pressure.
6. Remove the adjustment knob (Item 18), tighten the lower nut (Item 15) tightly against the upper nut (Item 15). Re-attach adjustment knob (Item 18) and screw down until contact is made with the nuts (Items 15). Screw down lock nut (Item 19) onto the stem (Item 8) until the threads cut into the nylon insert of the lock nut (Item 19).

\*If adjustment knob (Item 18) **DOES NOT** make contact with upper nut (Items 15), remove adjusting knob (Item 18), re-adjust (raise) nuts (Items 15) on stem (Item 8) and re-attach adjustment knob (Item 18), then repeat step #6.

\*\*If adjustment knob (Item 18) **DOES** make contact with upper nut; release the trigger of the spray gun and watch the pressure gauge for the pressure increase (“spike”). This “spike” **SHOULD NOT** exceed 500 psi above the operating pressure. If “spike” pressure exceeds the 500 psi limit, remove the adjusting knob (Item 18) and re-adjust (lower) the nuts (Items 15) on the stem (Item 8). Re-attach the adjusting knob (Item 18), then repeat step #6.

# VB8 Unloader Valve



REF	PART NO.	QTY	DESCRIPTION	NOTES
1	60.0058.31	1	3/8 BSP F OUTLET FITTING	
2	10.3070.02	2	O-RING 1.78 X 18.77 MM	▲
3	60.0053.51	1	SPRING	
4	60.0052.31	1	CHECK VALVE	
5	10.3213.00	1	O-RING 3 X 6 MM	▲
6	60.1201.35	1	VB8 BRASS BODY	
7	10.3170.08	1	O-RING 2,62 X 7.6 MM	▲
8	60.1206.31	1	PISTON	
9	10.3001.01	1	O-RING 1 X 4 MM	▲
10	10.3066.01	1	O-RING 1.78 X 15.6 MM	▲
11	60.1205.31	1	M 6 NUT	
12	60.2221.20	1	VB8/9 SEAT+SHUTTER	▲
13	10.4021.00	2	BACK RING 11.4 X 15.9 MM	▲
14	10.3175.00	1	O-RING 2.62 X 10.77 MM	▲
15	60.1204.31	1	SPRING GUIDE	
16	10.3167.01	1	O-RING 2.62 X 5.23 MM	▲

REF	PART NO.	QTY	DESCRIPTION	NOTES
17	60.1203.31	1	PISTON HOUSING	
18	16.2100.00	1	M 4 X 4 MM DOWEL	
19	60.1704.31	1	M 22 NUT	
20	14.3719.00	1	WASHER 9 X 15 MM	
21	60.1208.61	1	3.2 X 33 MM SPRING	
22	60.1210.31	1	UPPER FRAME	
23	14.7421.00	1	1/4" BALL	
24	60.1209.31	1	BRASS CAP	
25	29.0087.51	1	SST CLIP	
26	29.0089.84	1	PLASTIC HOUSING	
27	12.5006.00	1	EL.CABLE + MICRO SWITCH	
28	10.3206.01	1	O-RING 2.62 X 28.25 MM	
29	16.3020.00	2	2.5 X 12 MM SCREW	
30	29.0088.84	1	COVER	
31	10.3169.00	1	O-RING 2.62 X 6.02 MM	
32	29.0082.84	1	BLACK NUT-40 BAR	
33	10.3038.00	1	O-RING 1.78 X 3.68 MM	
34	14.3519.53	1	SST WASHER 4 X 8 MM	
35	60.2303.51	1	SPRING	
36	60.1281.31	1	PR 5 PIN	
37	60.1202.84	1	PLASTIC HANDLE (60.1290.00)	
38	14.3582.00	1	WASHER D. 30 MM (60.1290.00)	
39	60.2254.31	1	M 30 NUT (60.1290.00)	
40	29.0096.24	1	PR 5 PL.HOUSING KIT	
K1	60.1212.24	1	VB8 SPARE PARTS KIT 9X1	

▲ PARTS INCLUDED IN 60.1212.24 VB8 SPARE PARTS KIT

**LANDA**<sup>®</sup>  
Kärcher Group

8.913-999.0 • Printed in U.S.A.