

# PDHW

Industrial-Duty, Kubota Diesel-Powered,  
Self-Contained, Hot Water Pressure Washer

- 4.7 GPM, 3500 PSI
- Kubota Diesel Engine
- Belt-Drive Pump with 7-Year Warranty
- SureFire Burner\*
- 2,900 Watt Generator\*

■ Rugged tri-plunger, belt-drive, **High-Pressure LT Pump** with forged brass head and 7-year warranty.

■ **Kubota Factory-Certified** application of industrial-duty 599cc **Kubota Diesel Engine** with keyed electric start.

■ High-efficiency **12V SureFire Burner\*** is mounted on the end for ease of servicing and fuel adjustment.

■ **120V Burner** and GFCI receptacle are powered by reliable **2,900 Watt Generator.\***

■ Easy to service with **Locking Swing-Out Access Door**.

■ Conveniently placed **Control Panel** features **Keyed Ignition Switch, Burner On/Off Switch, Indicator Lights** for glow plug, low water and low oil, **Adjustable Thermostat** to control temperature, and **Hour Meter** for total operating time. Models with generator have a **120V GFCI Receptacle**.

■ Helpful **Trilingual Labels** with operating instructions and warnings in English, Spanish and French for owner and operator protection.

■ Trailer-ready with pre-drilled **Trailer Mounting Brackets**.

■ Cast-iron bushing **Pulleys** and two notched "V" cogged belts provide cooler operation and longer life.

■ Super-duty **Horizontal Heating Coil**, made of cold-rolled, Schedule 80 steel pipe has a 5-year warranty and is surrounded by an aluminized steel inner wrap and stainless steel top wrap.

■ Extremely versatile with many **Options** that include **Wheel Kit, Float Tank** with inlet injection, **Hose Reel Platform, Downstream Injector, Lift/Stack Platform, stainless steel Drip Pan, emergency engine Air Shutoff, and engine Spark Arrestor**.

■ Power platform is mounted on **Vibration Isolators** to extend the life of key components.

■ Rugged, 2-inch, polyester powder-coated channel **Steel** or **Stainless Steel Frame** for all-weather resistance includes **Forklift Guides** for easy mobility.

■ Extra-large 22-gallon diesel **Fuel Tank** has elevated fuel lines to prevent debris in fuel from causing damage, and tilts out for easy servicing.

■ Heavy-duty **Fuel-Water Separator** has replaceable element for removing water that can damage the burner fuel pump.

■ 50 ft. of 3/8", double-wire braid **Tuff-Skin Hose** featuring a 24-inch **Hose Guard** for burst protection.

■ Four **Quick-Couple Nozzles** are made of hardened stainless steel and are mounted for ready access.

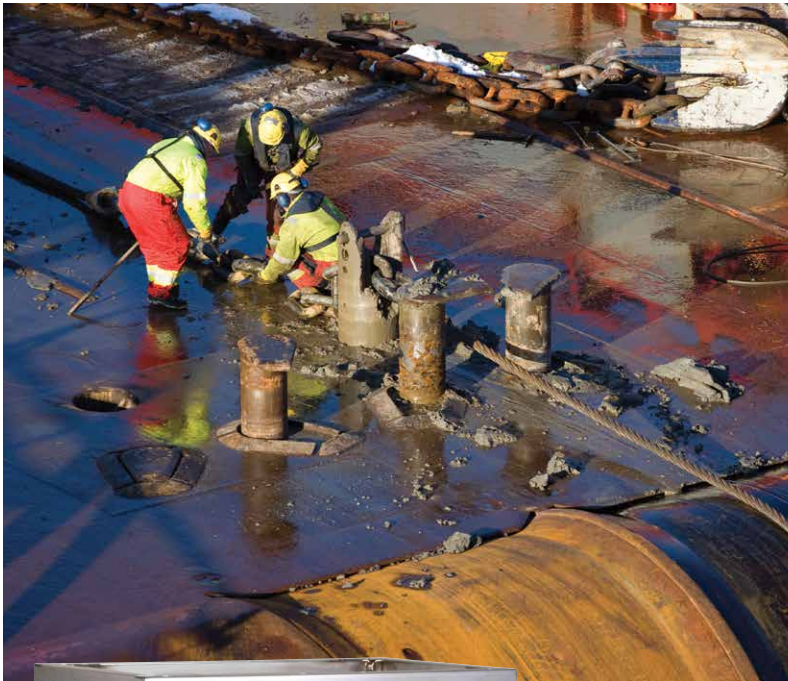


■ Many **Safety Features**, including rupture disk, thermal pump protector and high-temperature shut down to guard against any buildup of excessive pressures or heat.

■ Durable polyurethane **Battery Box** protects battery and is easy to access.

■ Insulated, spring-loaded **Trigger Gun** and insulated, dual-lance **Variable Pressure Wand** make it easy to switch between wash and rinse modes.

\* SureFire burner on 12V burner models only. 2,900 watt generator on 120V burner models only.



## WHY CHOOSE THE PDHW

The PDHW is a diesel-powered, hot water pressure washer. It combines the versatility of a compact size with the ruggedness and cleaning power of a full-skid pressure washer. The PDHW delivers cleaning power of 3500 PSI with a flow rate of 4.7 GPM. The PDHW is packed with:

**QUALITY:** Powered by a reliable Kubota electric-start engine, the PDHW features a top-of-the-line, oil-bath, tri plunger, belt-drive LT pump with 7-year warranty. The heating coil is made of ½-inch Schedule 80 cold-rolled pipe with a stainless steel outer top wrap. The sturdy steel frame gets all-weather protection from a polyester powder coat finish or stainless steel.

**VERSATILITY:** A 2,900 watt generator (on 120V burner models) provides power for the burner as well as a 120V outlet for low-wattage applications. The PDHW has forklift guides for transporting and brackets for mounting on a trailer. The extra-large, tilt-out, fuel tank provides hours of continuous cleaning. The PDHW has loads of additional options to make it the perfect machine for any job including off-shore oil rigs. Options include float tank with inlet injection, hose reel platform, downstream injector, lift/stack platform, stainless steel drip pan, wheel kit, emergency engine air shutoff, and engine spark arrestor.

**SAFETY:** As with all our models, the PDHW comes certified to the rigid UL-1776 safety standards, featuring: 24-inch hose guard for burst protection; thermal pump protector; high-temperature shutdown to prevent super-high heat buildup; and rupture disk to vent any buildup of excessive pressure in the heating coil.



*The versatile PDHW series includes stainless steel models that are perfect for high corrosion environments such as off-shore oil drilling.*

PDHW5-35624E/SS shown with optional stainless steel Lift/Stack Platform Kit and Emergency Air Shutoff Kit



Model #	Part #	GPM	PSI	Pump RPM	Engine	CCs	Burner Voltage	Ship Wt (lbs)
PDHW5-35624E	1.110-060.0	4.7	3500	1125	Kubota Z602	599	12V DC	948
PDHW5-35624E/SS	1.110-061.0	4.7	3500	1125	Kubota Z602	599	12V DC	948
PDHW5-35624E/G	1.110-062.0	4.7	3500	1125	Kubota Z602	599	120V AC	998
PDHW5-35624E/G/SS	1.110-063.0	4.7	3500	1125	Kubota Z602	599	120V AC	998

E = Electric start engine (battery not included); G = 2,900 watt generator; SS = Stainless steel frame

### Distributed by:

### Field Installed Options & Accessories

8.919-983.0	Hose Reel Platform Kit
8.904-525.0	Wheel Kit (4 tires)
8.919-981.0	Float Tank with Inlet Injection Kit
9.802-225.0	Downstream Detergent Injector Kit
8.919-984.0	Lifting Sling Kit
8.919-990.0	Lift/Stack Platform Kit
8.920-298.0	Lift/Stack Platform Kit, Stainless Steel
8.919-985.0	Stainless Steel Drip Pan Kit
8.919-988.0	Emergency Air Shutoff Kit
8.919-989.0	Engine Spark Arrestor Kit