

# LANDA®

Kärcher Group

# HOT

## SERVICE MANUAL

---

■ HOT2-1100

■ HOT4-2000

■ HOT2-1500

■ HOT3-1100

■ HOT3-300



---

For technical assistance or the Landa Dealer nearest you, consult our web page at  
[www.landa.com](http://www.landa.com)

8.917-210.0

## TROUBLESHOOTING

PROBLEM	POSSIBLE CAUSE	SOLUTION
<b>LOW OPERATING PRESSURE</b>	Faulty pressure gauge	Install new gauge.
	Insufficient water supply	Use larger garden hose; clean filter washer at water inlet.
	Old, worn or incorrect spray nozzle	Match nozzle number to machine and/or replace with new nozzle.
	Plumbing or hose leak	Check plumbing system for leaks. Re-tape leaks with teflon tape.
	Faulty or mis-adjusted unloader valve (Where applicable)	Adjust unloader for proper pressure. Install repair kit when needed.
	Worn packing in pump	Install new packing kit.
	Fouled or dirty inlet or discharge valves in pump	Clean inlet and discharge valves.
	Worn inlet or discharge valves	Replace with valve kit.
<b>LOW WATER TEMPERATURE</b>	Soot buildup on coils not allowing heat transfer	Clean coils.
	Lime deposits on inside of coil	Delime coil.
<b>WATER TEMPERATURE TOO HOT</b>	Defective high limit switch	Replace.
	Insufficient water supplied	Check water G.P.M. to machine.
	Restricted water flow	Check nozzle for proper size or obstruction.
<b>DETERGENT NOT DRAWING</b>	Air leak	Tighten all clamps. Check detergent lines for holes.
	Valve in the injector head may be blocked, dirty or damaged	Clean or replace valve in injector.
	Filter screen on detergent suction hose plugged	Clean or replace.
	Dried up detergent plugging metering valve	Disassemble and clean thoroughly.
	High viscosity of detergent	Dilute detergent to specifications.
	Hole in detergent line(s)	Repair hole.
	Low detergent level	Add detergent, if needed.
	Variable pressure control handle set for high pressure	Turn variable pressure control handle to allow water to flow out of brass soap nozzle.
<b>PUMP RUNNING NORMALLY BUT PRESSURE LOW ON INSTALLATION</b>	Pump sucking air	Check water supply and possibility of air seepage.
	Valves sticking	Check and clean or replace if necessary.
	Unloader valve seat faulty	Check and replace if necessary.
	Nozzle incorrectly sized	Check and replace if necessary (See serial plate for proper size).
	Worn piston packing	Check and replace if necessary.

## TROUBLESHOOTING

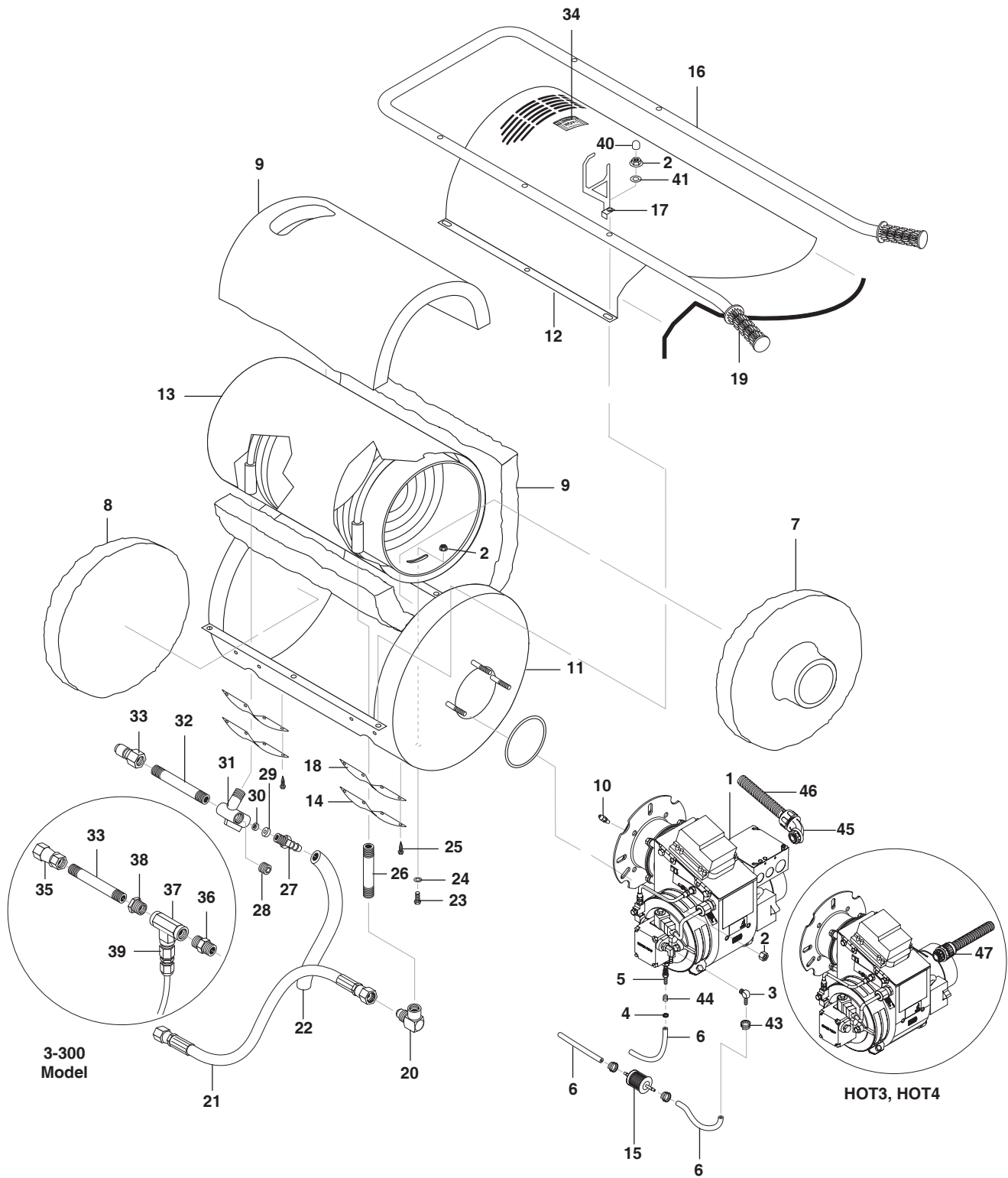
PROBLEM	POSSIBLE CAUSE	SOLUTION
<b>FLUCTUATING PRESSURE</b>	Valves worn	Check and replace if necessary.
	Blockage in valve	Check and replace if necessary.
	Pump sucking air	Check water supply and air see page at joints in suction line.
	Worn piston packing	Check and replace if necessary.
<b>PUMP NOISY</b>	Air in suction line	Check water supply and connections on suction line.
	Broken or weak inlet or discharge valve springs	Check and clean if necessary.
	Excessive matter in valves	Check and clean if necessary.
	Worn bearings	Check and clean if necessary.
<b>PRESENCES OF WATER IN OIL</b>	Oil seal worn	Check and replace if necessary.
	High humidity in air	Check and change oil twice as often.
<b>WATER DRIPPING FROM UNDER PUMP</b>	Piston packing worn	Check and replace if necessary.
	O-Ring plunger retainer worn	Check and replace if necessary.
	Pump protector	Reduce inlet water pressure. Do not close trigger on spray gun for longer than 1-2 minutes.
<b>OIL DRIPPINGS</b>	Oil seal worn	Check and replace if necessary.
<b>MACHINE SMOKES</b>  <b>A) SMOKES WHILE UNIT IS RUNNING</b>  <b>B) SMOKES AT COLD-START WHEN BURNER IS OF</b>	<b>AB</b> Improper fuel or water in fuel	Drain tank and replace contaminated fuel.
	<b>AB</b> Improper air adjustment	Readjust air bands on burner assembly.
	<b>AB</b> Low fuel pressure < 140 PSI	Adjust fuel pump pressure to specifications.
	<b>AB</b> Weak fuel pump	Check fuel pump pressure. Replace pump if needed.
	<b>AB</b> Fuel filter partially clogged	Replace as needed.
	<b>AB</b> Soot build up on coils	Clean coils with soot remover.
	<b>AB</b> Lime build up in coils	Clean inside of coils using Landa's coil cleaner.
	<b>AB</b> Improper burner nozzle	See combustion assembly breakdown.
	<b>AB</b> Electrode is misaligned	Realign electrodes to specs.
	<b>B</b> Fuel pressure is too high for clean burn (Fuel PSI above 140 but less than 200)	Reduce fuel PSI / increase air and band set for cleaner burn without max water heat loss.
<b>WATER TEMPERATURE TOO HOT</b>	Incoming water to machine warm or hot	Lower incoming water temperature.
	Fuel pump pressure too high	Lower fuel pressure.
	Fuel pump defective	Replace fuel pump.
	Detergent line sucking air	Tighten all clamps. Check detergent line for holes.
	Defective high limit switch	Replace.
	Incorrect fuel nozzle size	See exploded view parts list for proper size.
	Insufficient water supplied	Check G.P.M. to machine.
	Restricted water flow	Check nozzle for obstruction, proper size.

## TROUBLESHOOTING

PROBLEM	POSSIBLE CAUSE	SOLUTION
<b>BURNER LIGHT WILL NOT LIGHT</b>	Disconnected or short in electrical wiring	All wire contacts should be clean and tight. No breaks in wire.
	Burner motor thermal protector tripped	If tripped, check voltage, connections, and extensions for cause. Check fuel pump shaft rotation for binding causing motor to overheat.
	Flex-coupling slipping on fuel pump shaft or burner motor shaft	Replace if needed.
	ON-OFF Switch defective	Check continuity through burner switch.
	Heavy sooting on coil and burner, can cause interruption of air flow and shorting of electrodes	Clean as required.
	Improper electrode setting	Clean and test according to diagram in Operators Manual.
	Fuel not reaching combustion chamber	Check fuel pump for proper flow. Check solenoid flow switch on machines with spray gun control, for proper on-off fuel flow control.
	Clogged burner nozzle	Replace.
	Water not turned on	Turn on water to activate burner flow switch.
	Fuel solenoid malfunction	Remove, test for continuity and replace as needed.
	Fuel solenoid malfunction	Replace if needed.
<b>PUMP MOTOR STOPS AFTER A FEW MINUTES OF OPERATION OR STARTS SLOW</b>	Insufficient voltage	Use heavier drop cord and check voltage at receptacle. Check name plate for amperage draw.
	Plugged nozzle	Remove and clean nozzle. Turn on water pump, flush lines, and replace nozzle.
	Wrong spray nozzle	See serial plate for minimum nozzle size.
	Automatic overload switch tripped	Allow motor to cool - then push Red reset button.
	Motor wet	Allow to dry.
	Short in electrical wiring	Wire contacts should be clean and tight. No breaks in wires.
	Coil liming up causing excessive pressure	See section on Preventative Maintenance.
	Water pump low or out of oil causing the pump to bind up	Fill to correct level.



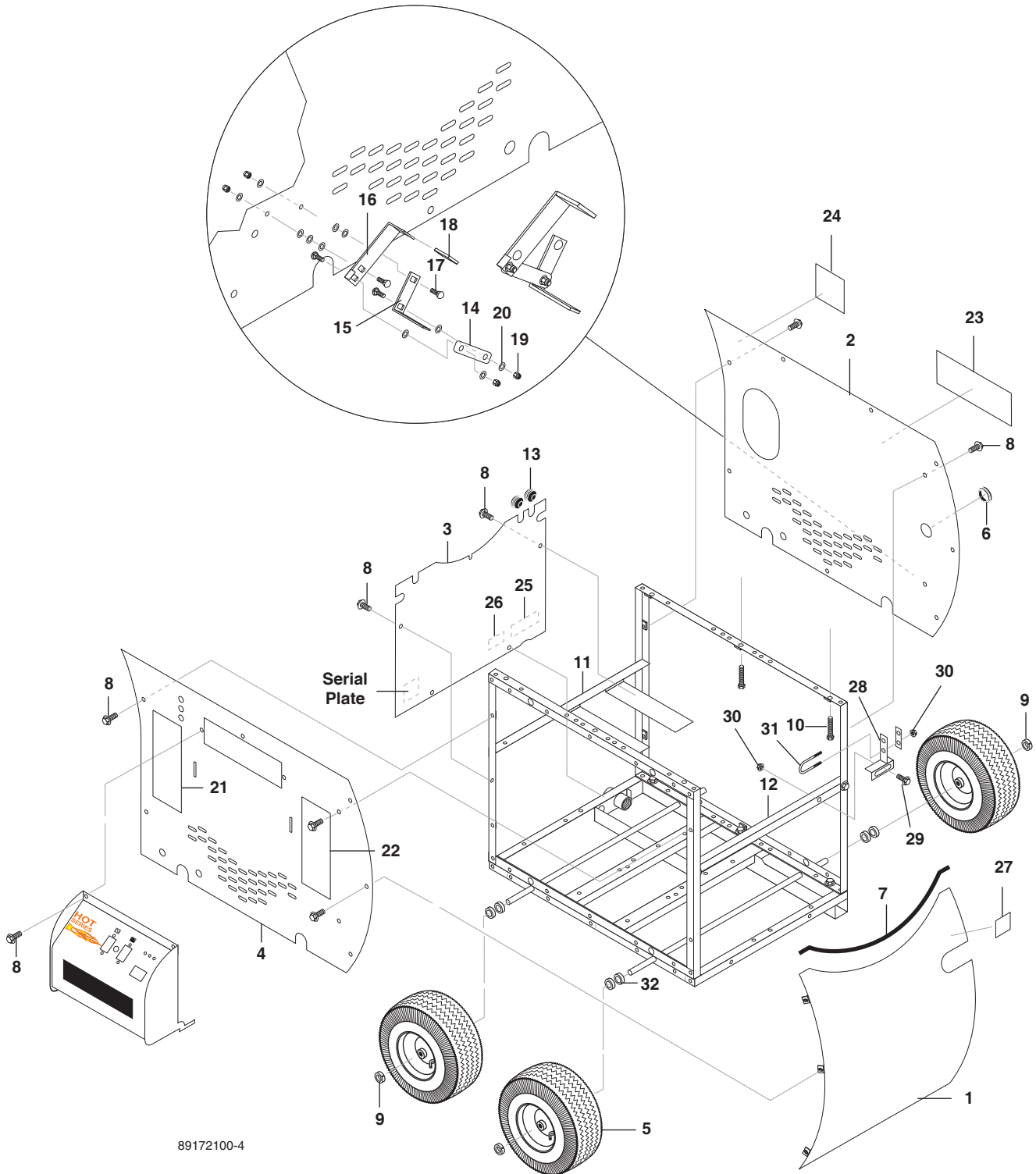
# BURNER / COIL ASSEMBLY



## BURNER / COIL ASSEMBLY PARTS LIST

ITEM	PART NO.	DESCRIPTION	QTY	ITEM	PART NO.	DESCRIPTION	QTY
1		Burner, See Specification, Page 23		25	8.718-941.0	Screw, 10-16 x 5/8 Tek	8
2	9.802-781.0	Nut, 3/8", Flange Whiz Loc, NC	10	26	9.802-013.0	Nipple, Pipe 1/2" x 2-1/2" Zinc Sch 80 MPT	1
3	8.706-958.0	Hose Barb, 1/4" Barb x 1/4" Pipe, 90°	1	27	8.707-019.0	Push-on, 1/2" Barb x 3/8" MPT	1
4	6.390-126.0	Clamp, Hose, .46-, .54 ST	1	28	8.706-248.0	Plug, 3/8" Allen Counter Sunk	1
5	8.706-941.0	Hose Barb, 1/4" Barb x 1/4" MI Pipe, Brass	1	29	9.184-030.0	Spacer, Rupture Disk	1
6	9.802-254.0	Hose 1/4"	1.660 ft	30	9.151-014.0	Rupture Disk, 5000 PSI	1
7	8.731-284.0	Disk, Fiber, (Donut), Horz, MVC	1	31	9.149-003.0	Manifold Coil Outlet Discharge	1
8	8.735-002.0	Disk, Fiber, Horz., MVC	1	32	8.725-553.0	Nipple, 3/8"x 8" Sch 80 Galvanized	1
9	9.802-896.0	Insulation, Blanket-No Foil, 24" x 57"	1		8.706-059.0	Nipple, 3/8" x 5" (3-300)	1
10	8.754-890.0	Fuel Nozzle, 1.00 x 90 AZ (2-1100, 2-1500)	1	33	9.802-170.0	Nipple, 3/8" x 3/8" NPT ST Fem	1
	8.754-916.0	Fuel Nozzle, 1.50 x 90 BZ (3-1100)	1	34	9.800-006.0	Label, HOT w/Arrows	1
	8.755-610.0	Fuel Nozzle, 1.75 x 80 AZ	1	35	9.802-048.0	Swivel, 1/2" JIC x 3/8 MPT (3-300)	1
11	8.914-946.0	Assy, Bottom Wrap	1	36	8.706-880.0	Nipple, 1/2" MPT x 3/8 MPT	1
12	8.919-730.0	Wrap, Top SS, Horz.(2-11024D, 2-15024D, 3-11024D, 4-2000)	1	37	8.706-216.0	Tee, 1/2" Steel	1
	8.917-500.0	Wrap, Top, Yellow (2-11026D, 2-15026D, 3-30036D)	1	38	8.706-294.0	Bushing, 1/2" x 3/8 Steel	1
13	8.925-222.0	Spare Coil Duro SCH 80 MTY	1	39	8.756-260.0	Switch, Snap 356 DR HI Limit	1
14	9.803-132.0	PHW/VNG Insulation Retainer Plate	2	40	8.750-435.0	Cap, Black Vinyl	6
15	8.709-152.0	Filter, Fuel, Disposable	1	41	9.802-807.0	Washer, 3/8" Flat	6
16	8.919-761.0	Handle, Weldment, HOT	1	43	8.750-933.0	Band Hose Clamp, Hose Id 1/8" - 5/16"	3
17	8.917-729.0	Holder, Wand	2	44	8.754-911.0	Check Valve, 1 Way, 1/4" barb	1
18	8.933-009.0	Gasket, Burner Plate	2	45	9.802-517.0	Connector, 1/2" L/T, 90 DGR, Black	1
19	9.802-069.0	Grip, 1", Handle (Waffle)	2	46	9.802-448.0	Conduit, WTR Tight, Flex, 1/2 100/Box	1
20	9.802-043.0	Elbow, 1/2" JIC x 1/2" Fem, 90°	1	47	8.716-547.0	Connector, 1/2" L/T, Straight, Black	1
21	8.918-425.0	Hose, 3/8" x 29", 2 Wire, Pressure Loop (2-11026D, 2-15026D)	1				
	8.918-424.0	Hose, 3/8" x 25", 2 Wire Pressure Loop (4-20024A, 4-20024G, 3-30036D)	1				
	8.918-422.0	Hose, 3/8" x 20", 2-Wire Pressure Loop (2-11024D, 2-15024D, 3-11024D)	1				
22	9.802-259.0	Hose, 1/2" Push On, Per Ft	2 ft				
23	9.802-723.0	Bolt, 3/8" x 1-1/2", NC HH	1				
24	9.802-807.0	Washer, Flat 3/8"	4				

# CHASSIS ASSEMBLY - EXPLODED VIEW

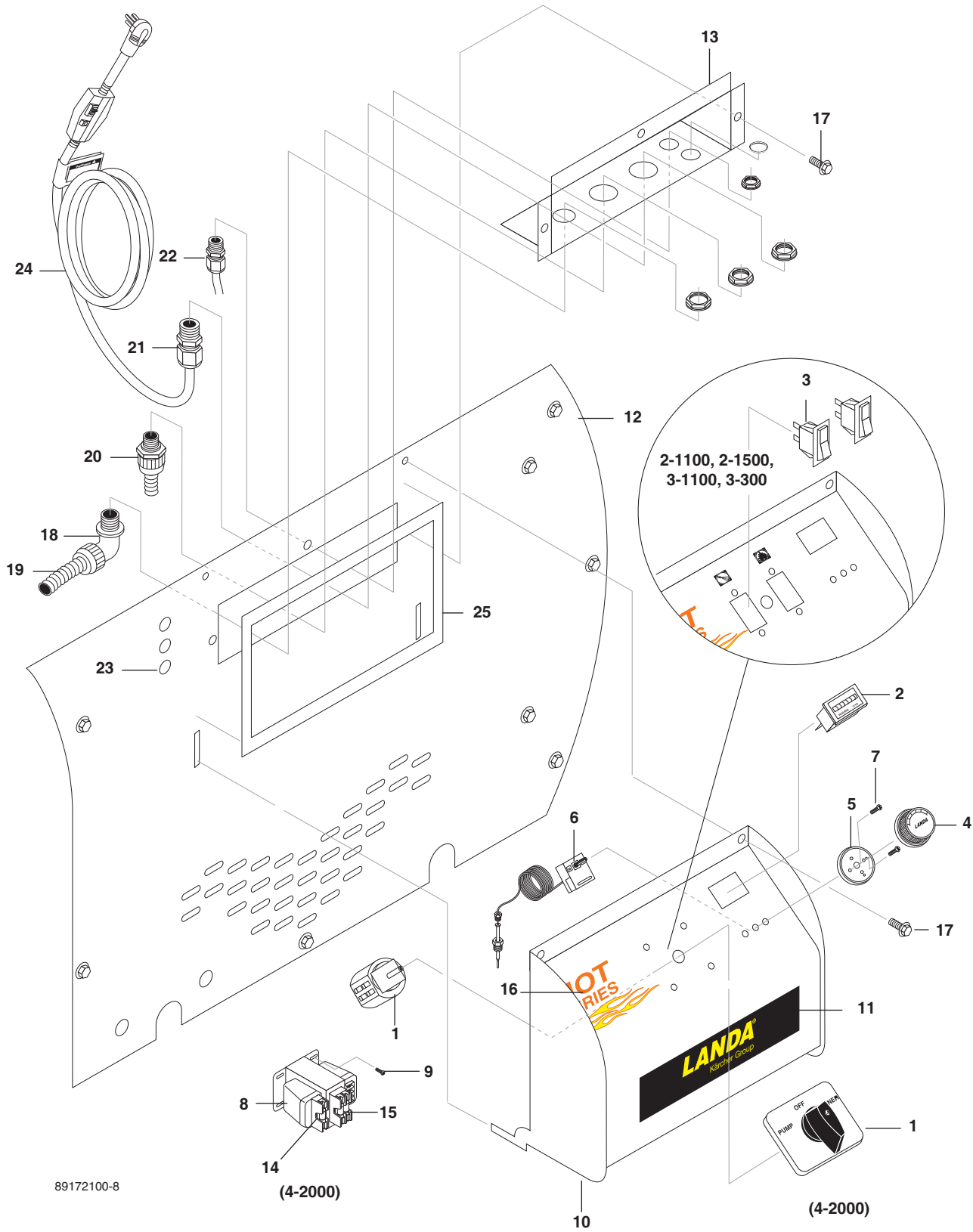




## CHASSIS ASSEMBLY PARTS LIST

ITEM	PART NO.	DESCRIPTION	QTY
1	8.919-717.0	Panel, Access, Pump Side, HOT	1
2	8.919-718.0	Panel, Side, Fuel HOT	1
3	8.919-719.0	Panel, Access, Fuel Tank, HOT	1
4	8.917-405.0	Weldment, Side Panel HOT_09	1
5	8.754-435.0	Wheel & PU Tire Assy, 12" Steel Rim	4
6	9.802-103.0	Bushing, 5/8" Snap (2-11026, 2-15026, 3-300)	1
7	9.802-071.0	Trim, 750 B2 x 1/16. Black	5 ft
8	8.750-246.0	Screw, 1/4" X 1/2" HH NC, Whiz Loc	16
9	9.802-782.0	Collar, 5/8" Bore Shaft 3010	4
10	8.718-674.0	Bolt, 3/8-16 x 2-1/4" , Gr8.2 Seratd Flnge B	6
11	8.917-423.0	Angle, Back Upper, Weldment DD	1
12	8.917-465.0	Weldment, Angle Front Upper, HOT	1
13	9.802-064.0	Grommet, Rubber, Nozzle Holder	3
14	9.802-997.0	Linkage, Brake, Black	1
15	9.802-996.0	Bracket, Brake Pad	1
16	9.803-111.0	Lever, Brake, Black	1
17	9.802-705.0	Bolt, 1/4"-20 x 1" Carriage Zinc	4
18	9.804-608.0	Cap, Vinyl Flat (Yellow) .125x1.0x1.875	1
19	9.802-773.0	Nut, 1/4-20 Esna NC	4
20	9.802-802.0	Washer Flat 1/4"	12
21	9.800-409.0	Label, Operator	1
22	9.800-410.0	Label, Warning	1
23	9.800-411.0	Label, HOT Series	1
24	9.800-002.0	Label, Caution, Fuel	1
25	9.800-020.0	Label, Cold Water	1
26	9.800-022.0	Label, 120V (2-1100, 2-1500, 3-1100, 3-300)	1
	8.900-511.0	Label, 220V (4-2000A)	1
	8.900-514.0	Label, 208V (4-2000G)	1
27	9.800-021.0	Label, Hot Water Outlet	1
28	8.917-402.0	Bracket, Hose Outlet	1
29	8.750-246.0	Screw, 1/4" x 1/2" HH NC, Whiz, Blk	1
30	9.802-775.0	Nut, 1/4" Flange, ZN	3
31	9.804-373.0	U-Bolt, 1/4"-20MS Plated	1
32	8.751-374.0	Spacer 5/8 x 1,25 Black	8

# CONTROL PANEL ASSEMBLY

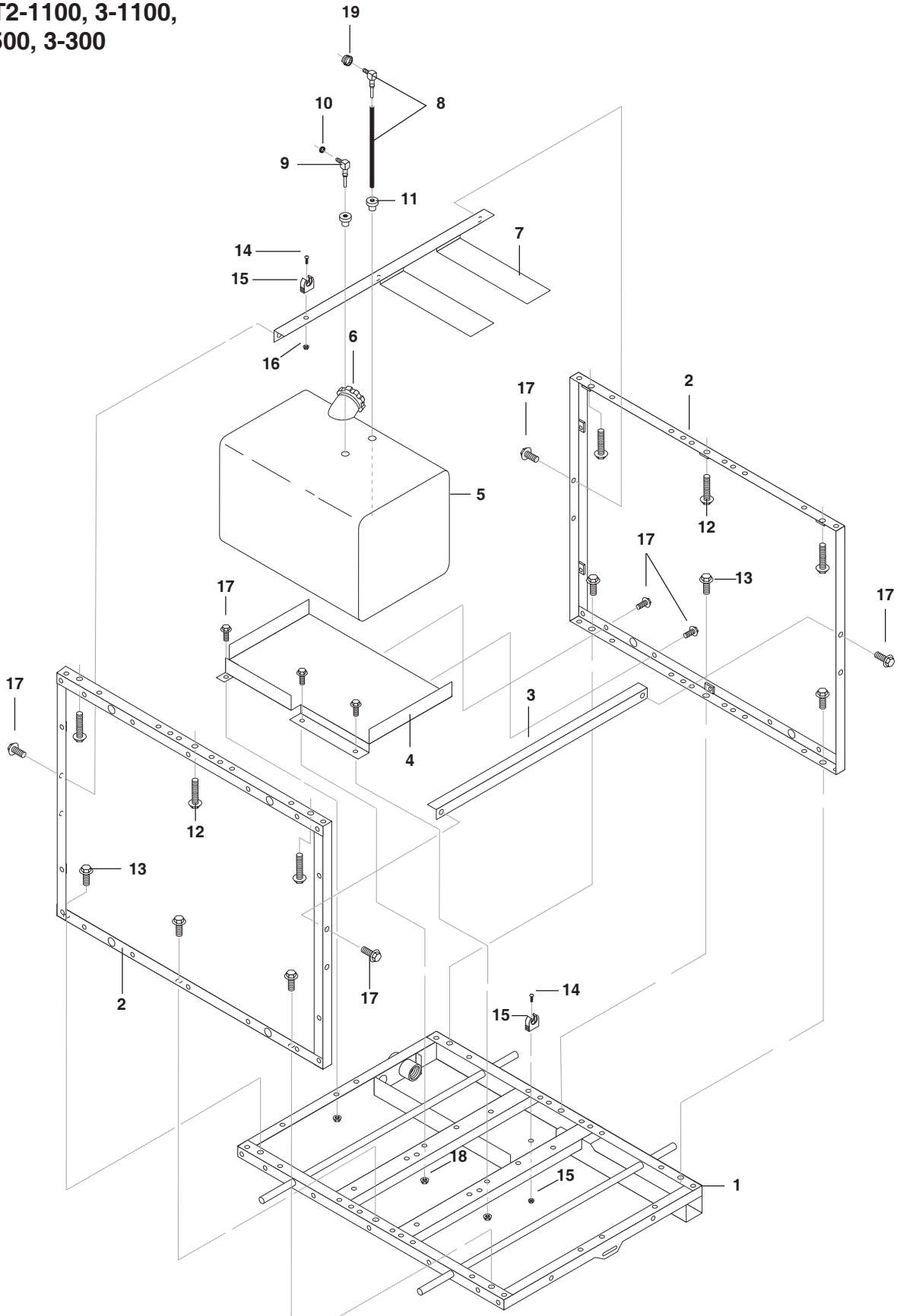


## CONTROL PANEL ASSEMBLY PARTS LIST

ITEM	PART NO.	DESCRIPTION	QTY
1	9.802-449.0	Switch, 3 PS, 120V-230V, 1 PH (4-2000)	1
2	9.802-283.0	Hour Meter (Optional)	1
3	8.725-706.0	Switch, Rocker WB2 (2-1100, 2-1500, 3-1100, 3-300)	2
4	8.750-097.0	Knob, Thermostat 120C/248F (2-1100, 2-1500, 3-1100, 4-2000)	1
5	8.712-190.0	Bezel, Plastic, Thermostat	1
6	8.750-095.0	Thermostat, 120C/240F, 2 Meter Capillary (2-1100, 2-1500, 3-1500, 4-200)	1
7	8.718-779.0	Screw, 4mm x 6 mm, Pan Head	1
8	9.802-551.0	Transformer, 240/480V-120V, 50/60Hz, .050KVA (4-2000 A, 4-2000)	1
9	8.718-569.0	Screw, 10-32X1/2 PL RDH PH M(935337)	4
10	8.920-170.0	Control Panel	1
11	8.916-090.0	Label, "Landa"	1
12	8.917-405.0	Weldment, Side Panel HOT_09	1
	8.917-565.0	Weldment, Side w/Hole (2-1100)	1
13	8.917-275.0	Electrical Box, HOT_09	1
14	9.802-463.0	Fuse, Paper, Buss Fnm-1/2, 250V Midget TD (4-2000)	1
15	8.933-007.0	Fuse, KTK-R1 600V Midget Fuse (4-2000)	2
16	9.800-407.0	Label, Control Panel, HOT_09	1
17	9.802-754.0	Screw, 1/4" x 1/2" HH, NC, Whiz Loc	5
18	9.802-517.0	Connector, 1/2" L/T, 90°, Black	1
19	9.802-448.0	Conduit, WTR Tight, Flex, 1/2 100'/Box	3 ft
20	8.716-547.0	Connector, 1/2" L/T, Straight, Blk	1
21	9.802-518.0	Strain Relief, LT, STR, 3/4 NPT .49-.71D (2-1100, 4-20024)	1
22	8.716-598.0	Strain Relief, .18-.31 (.51 Hole)	1
23	9.802-064.0	Grommet, Rubber, Nozzle Holder	3
24	9.802-431.0	Cord, w/GFCI Plug, 120V/20 Amp (2-1100, 2-1500, 3-1100, 3-300)	1
	8.932-969.0	Label, Elec. Cord Warning	1
	9.802-430.0	GFCI, 240V, 30 Amp w/Cord (4-2000)	1
25	8.725-956.0	Gasket, Elec. Box, HOT	1

# DIRECT DRIVE ASSEMBLY EXPLODED VIEW

HOT2-1100, 3-1100,  
2-1500, 3-300

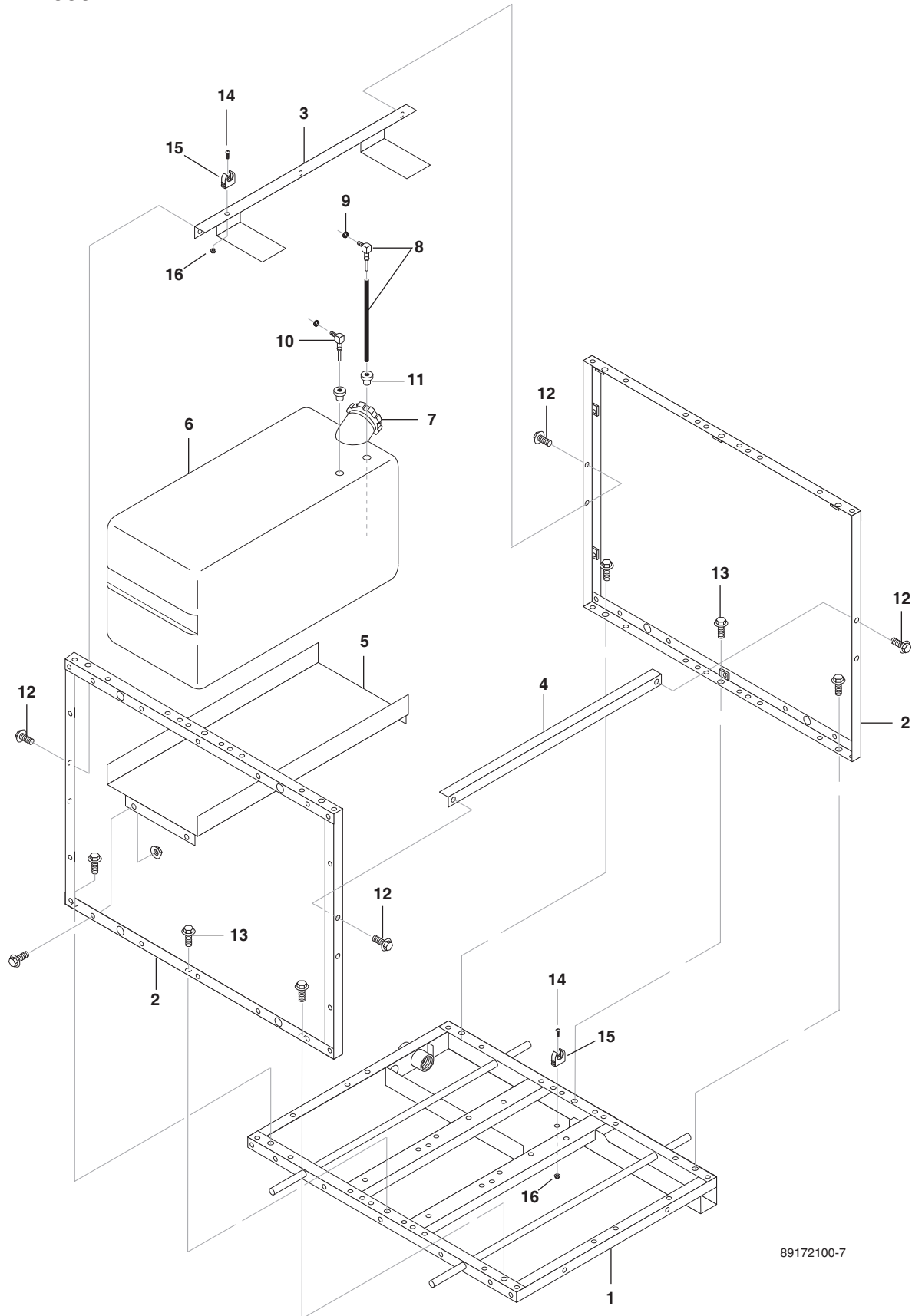


## DIRECT DRIVE ASSEMBLY EXPLODED VIEW PARTS LIST

ITEM	PART NO.	DESCRIPTION	QTY
1	8.920-172.0	Base, HOT	1
2	8.917-384.0	Frame, Side Weldment HOT	2
3	8.917-465.0	Weldment, Angle Front Upper, HOT	1
4	8.917-422.0	Base, Fuel Tank, Weldment DD	1
5	9.802-081.0	Tank , Fuel 6 Gal (952724) Blank	1
6	9.802-089.0	Cap, Fuel Tank, Plastic H60-AV1	1
7	8.917-423.0	Angle, Back Upper, Weldment DD	1
7	8.917-422.0	Bracket, Fuel Tank Weldment, HOT BD (4-2000)	1
8	9.803-531.0	Diptube Assy, Plastic, 10" Long	1
9	9.802-054.0	Elbow, Fuel Tank Zinc	1
10	6.390-126.0	Clamp, Hose, .46-, .54 ST	1
11	9.802-053.0	Bushing, Fuel Tank	2
12	8.718-674.0	Bolt, 3/8" x 2-1/4" Whiz Loc	6
13	9.802-767.0	Screw, 3/8" x 3/4" Whiz Loc	6
14	9.802-759.0	Screw, 10/32" x 1/2" BHSOC Black	2
15	9.802-203.0	Clamp, 1/2"	2
16	9.802-695.0	Nut, 10/32" Keps	2
17	8.750-246.0	Screw, 1/4" x 1/2" Nc, Whiz Loc Black	9
18	9.802-775.0	Nut, 1/4" Flange, Zn	3
19	8.750-933.0	Band Hose Clamp, Hose Id 1/8" - 5/16"	3

# BELT DRIVE ASSEMBLY EXPLODED VIEW

HOT4-2000



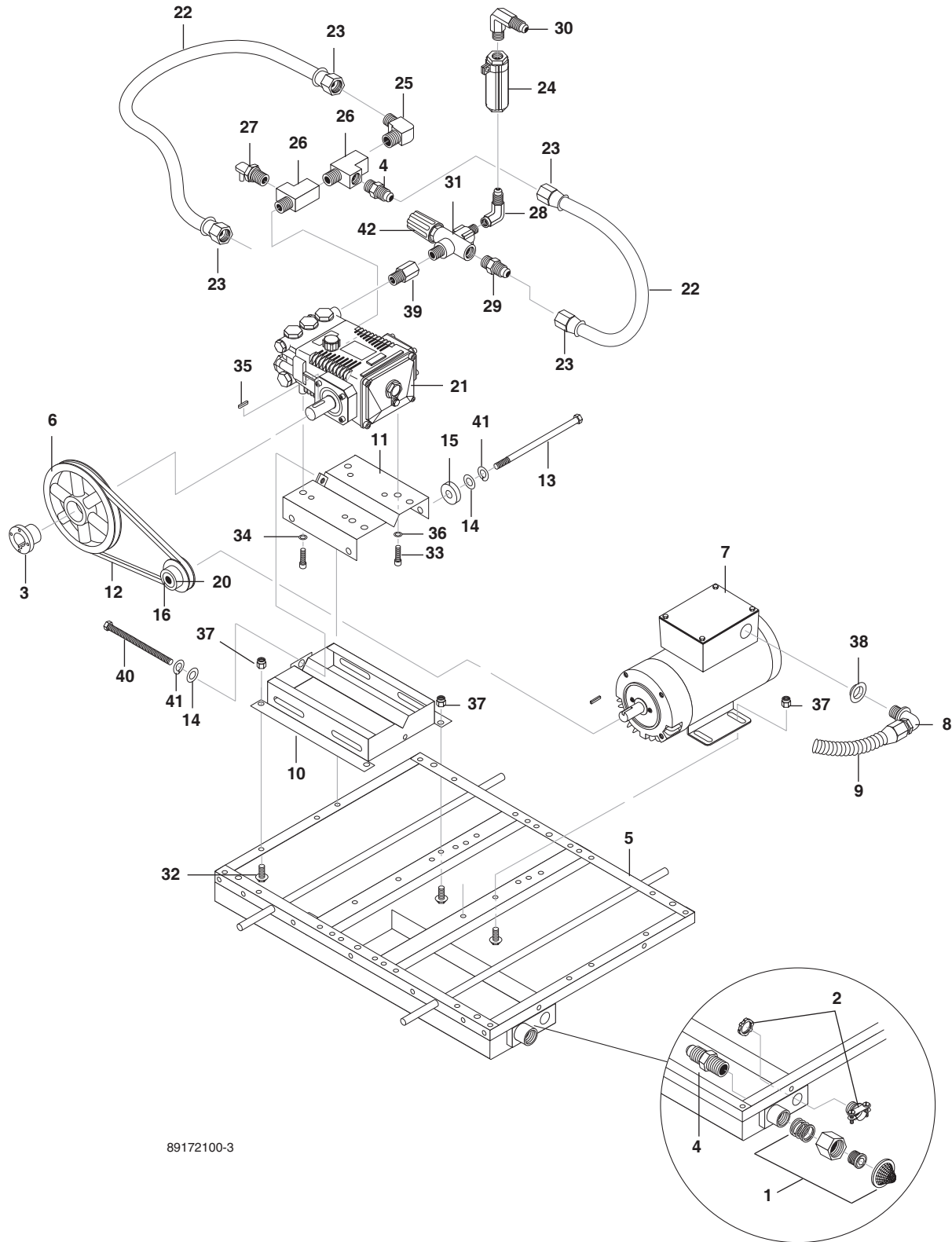
89172100-7

## BELT DRIVE ASSEMBLY EXPLODED VIEW PARTS LIST

ITEM	PART NO.	DESCRIPTION	QTY
1	8.920-172.0	Base, HOT	1
2	8.917-384.0	Frame, Side Weldment HOT	2
3	8.917-416.0	Bracket, Fuel Tank Weldment, HOT BD (4-2000)	1
4	8.917-465.0	Weldment, Angle Front Upper, HOT	1
5	8.917-400.0	Base, Fuel Tank Weldment, HOT 4-2000	1
6	8.750-186.0	Tank, Fuel HOT 4-2000_09	1
7	9.802-089.0	Cap, Fuel Tank, Plastic H60-AV1	1
8	9.802-055.0	Diptube Assy, Plastic, 9.125"	1
9	6.390-126.0	Clamp, Hose, .46-, .54 ST	6
10	9.802-054.0	Elbow, Fuel Tank Zinc	1
11	9.802-053.0	Bushing, Fuel Tank	2
12	8.750-246.0	Screw, 1/4 x 1/2 Nc Whiz Loc Black	8
13	9.802-767.0	Screw, 3/8" x 3/4" Whiz Loc	6
14	9.802-759.0	Screw, 10/32" x 1/2" BHSOC Black	2
15	9.802-203.0	Clamp, 1/2"	2
16	9.802-695.0	Nut, 10/32" Keps	2

# BELT DRIVE PUMP ASSEMBLY EXPLODED VIEW

HOT4-2000



89172100-3

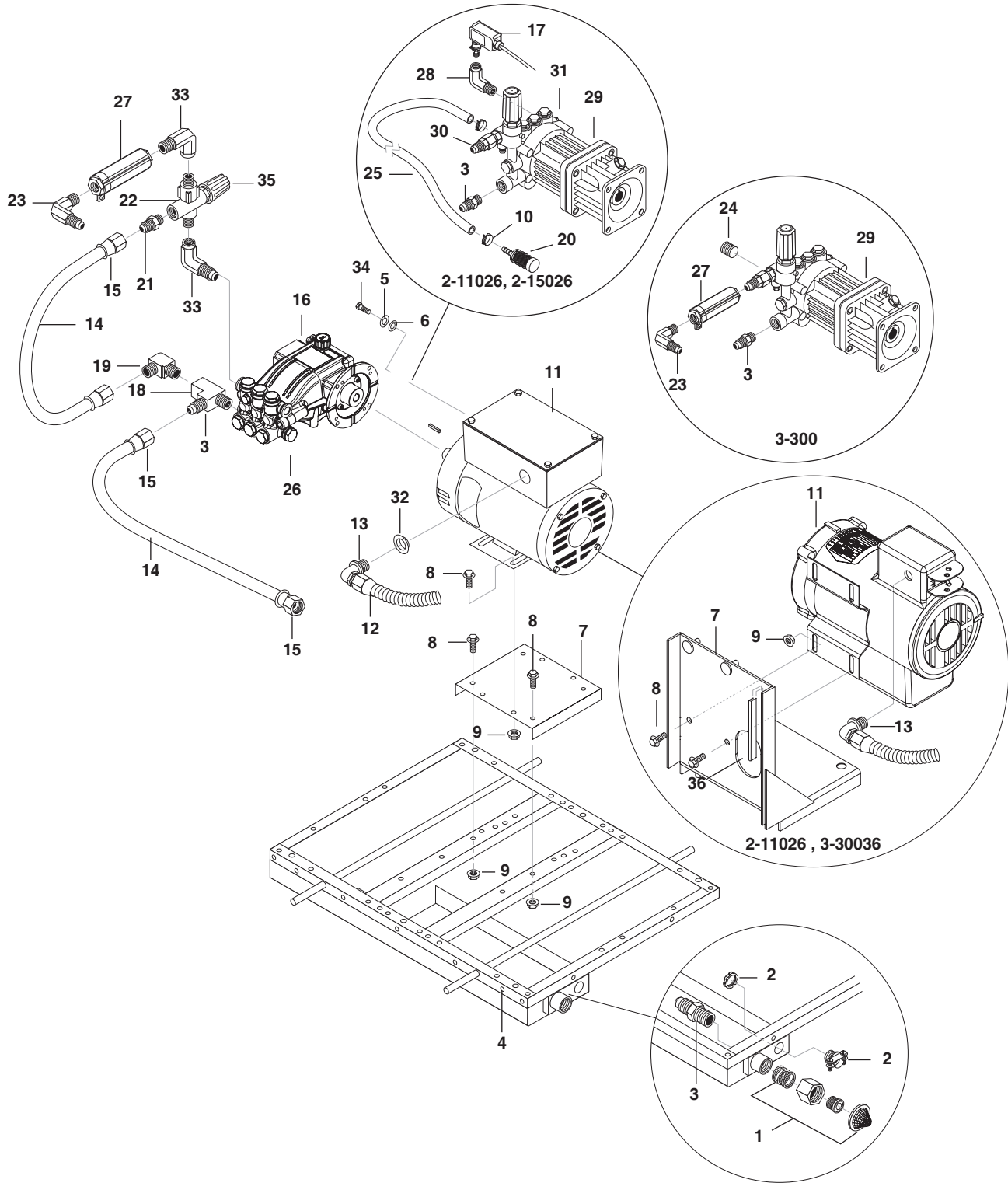


## BELT DRIVE PUMP ASSEMBLY EXPLODED VIEW PARTS LIST

ITEM	PART NO.	DESCRIPTION	QTY	ITEM	PART NO.	DESCRIPTION	QTY
1	9.802-146.0	Swivel, 1/2" Mp X 3/4" GHF w/Strainer	1	20	8.715-560.0	Pulley, BK 30 H	1
2	9.802-520.0	Strain Relief, 3/4"	1	21	8.904-856.0	Pump, Landa LD4020R.1, 4@2000, 1550 RPM	1
3	9.802-402.0	Bushing, H x 24mm	1	22	9.802-259.0	Hose, 1/2", Push On	1.330 ft
4	9.802-128.0	Nipple, 1/2" JIC x 1/2" MPT Pipe	2	23	9.802-151.0	Swivel, 1/2" JIC Fem, Push-on	4
5	8.920-172.0	Base, HOT	1	24	8.933-006.0	Switch, Flow, MV60	1
6	9.802-380.0	Pulley, BK 80 H	1	25	9.802-131.0	Elbow, 1/2" JIC x 1/2" MPT, 90°	1
7	9.802-341.0	Motor 5 HP, 1PH 230V 3450 RPM C-Face	1	26	8.706-860.0	Tee, 1/2" Street	2
	8.715-144.0	Motor, 5 z, 208V	1	27	8.707-256.0	Pump Protector, 1/2" PTP, 140°	1
8	9.802-517.0	Connector, 1/2" L/T, 90° Black	2	28	8.706-207.0	Elbow, 3/8", Street	1
9	9.802-448.0	Conduit, Wtr. Tight, Flex, 1/2 100'/box	3	29	9.802-127.0	Nipple, 1/2" JIC x 3/8"	1
10	8.917-389.0	Rail, Pump Weldment, HOT BD	1	30	9.802-039.0	Elbow, 1/2" JIC x 3/8" MPT 90°	1
11	8.917-387.0	Mount, Pump Rail Weldment	1	31	8.753-028.0	Unloader VR54 w/Knob 2175 Psi	1
12	9.802-413.0	Belt, BX32	1	32	9.803-551.0	Screw, 5/16" x 3/4" Whiz"	8
13	8.725-549.0	Bolt, 3/8" x 7-1/2" HH	2	33	9.802-741.0	Bolt, 8mm x 16mm Hex Head	4
14	9.802-807.0	Washer, Flat 3/8"	4	34	9.802-813.0	Washer, 5/16", Lock, Split Ring	4
15	8.719-047.0	Washer, Nylon, .281 ID x 1 OD x .25 THK	2	35	9.803-167.0	Crankshaft Key	1
16	9.803-897.0	Bushing, H x 3/4	1	36	8.718-980.0	Washer, 5/16", Flat, SAE	4
				37	9.802-778.0	Nut, Whiz Loc 5/16 Flange	8
				38	9.803-834.0	Washer, Reducing 3/4" x 1/2"	1
				39	8.706-309.0	Adapter, 3/8 x 3/8	1
				40	9.802-733.0	Bolt, 3/8" x 3-1/2"	1
				41	9.802-814.0	3/8 Lock Washer	3
				42	8.718-959.0	Washer SS	1

# DIRECT DRIVE PUMP ASSEMBLY EXPLODED VIEW

HOT2-1100, 3-1100, 2-1500

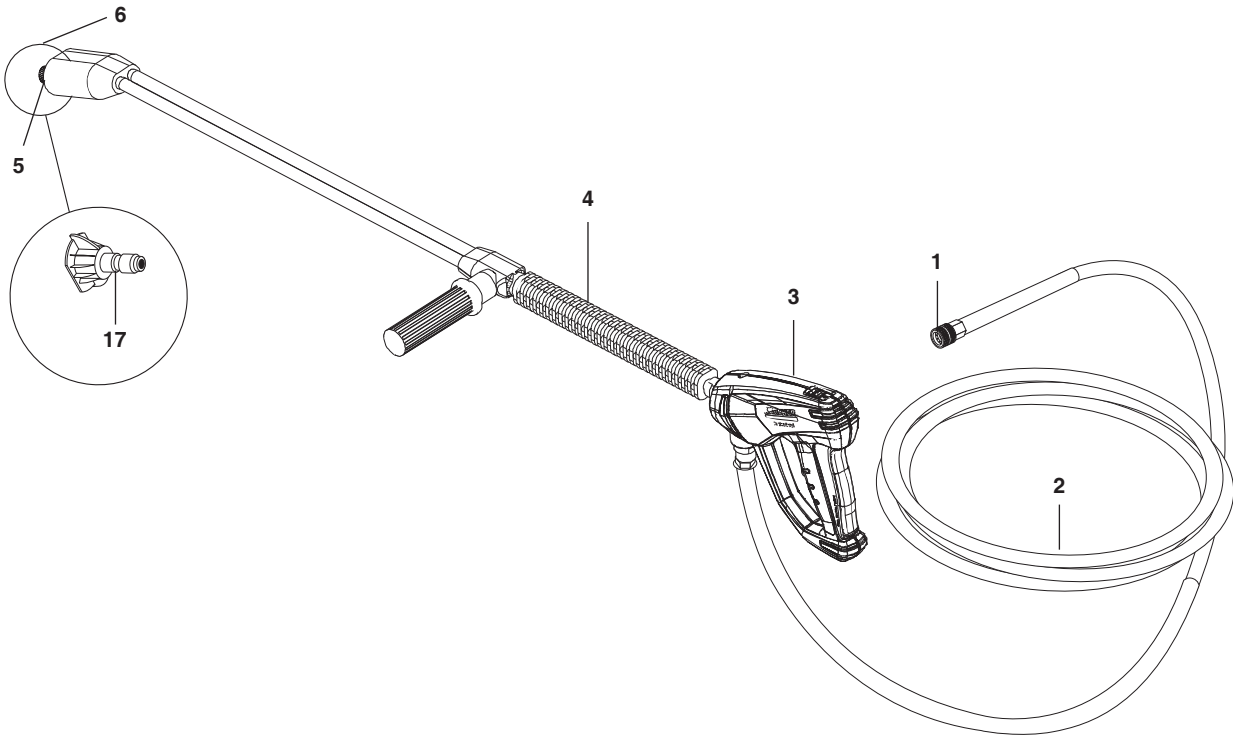


## DIRECT DRIVE PUMP ASSEMBLY PARTS LIST

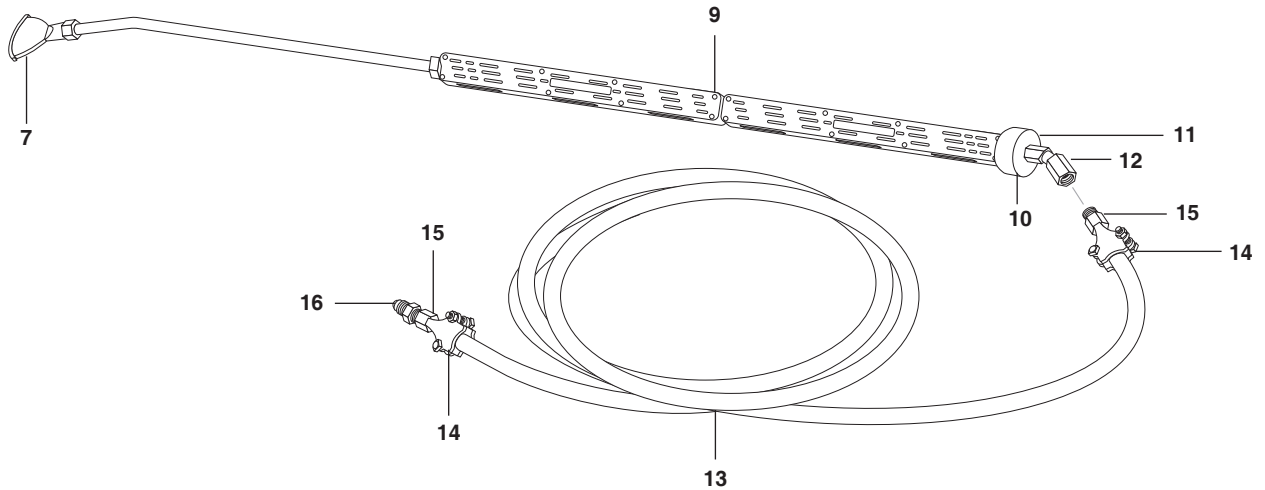
ITEM	PART NO.	DESCRIPTION	QTY	ITEM	PART NO.	DESCRIPTION	QTY
1	9.802-146.0	Swivel, 1/2" MP x 3/4" GHF w/Strainer	1	29	8.750-238.0	Pump, Comet BXD2020E, 1.9@2000, 5/8 Shaft (2-11026D, 2-15026D, 3-300)	1
2	9.802-520.0	Strain Relief, 3/4"	1		9.802-357.0	Pump, Comet AXD2020E, 1.9@2000 (2-15026D)	1
3	9.802-128.0	Nipple, 1/2" JIC x 1/2" MPT Pipe	3	30	9.802-037.0	Nipple, 1/2 JIC x 3/8 FPT, Steel	1
4	8.920-172.0	Base, HOT	1	31	8.707-254.0	Pump Protector, 3/8" 145°	1
5	9.802-807.0	Washer 3/8	4	32	9.803-834.0	Washer, Reducing 3/4" x 1/2" (2-15026D)	1
6	9.802-814.0	Washer, 3/8 Lock	4	33	8.706-207.0	Elbow, 3/8" Street	2
7	8.917-286.0	Base, Motor, Direct Drive	1	34	8.719-528.0	Bolt, 3/8" x 1	4
	8.923-038.0	Vertical Base Painted Motor Direct Drive (2-11026D , 3-30036D )	1	35	8.718-959.0	Washer	1
8	9.803-551.0	Screw, 5/16" x 3/4" Whiz	8	36	9.802-071.0	Trim, 750 B2 x 1/16. Black	.53Ft.
9	9.802-778.0	Nut, Whiz Loc 5/16 Flange	8				
10	8.740-345.0	Clamp	2				
11	9.804-516.0	Motor, 1.5 HP, 1PH, 120V, 1725 RPM, TEFC (2-11024D)	1				
	8.754-091.0	Motor, 1.5Hp 1Ph,115V 3480 RPM, ODP (2-11026D, 3-30036D)	1				
	8.754-709.0	Motor, 2 HP, 1PH, 115V, 1750 RPM , 56C ODP	1				
	8.754-710.0	Motor, 2 HP, 1PH, 115/230V, 3470 RPM	1				
12	9.802-448.0	Conduit, Wtr. Tight, Flex,1/2 100'/Box	3				
13	9.802-517.0	Connector, 1/2" L/T, 90°, Black	1				
14	9.802-259.0	Hose, 1/2", Push On	3.750 ft				
15	9.802-151.0	Swivel, 1/2" JIC Fem, Push-on	4				
16	8.923-763.0	Pump, Landa LF2030S, (2-1100, 2-1500)	1				
	8.923-765.0	PUMP, LANDA LF2830S (3-1100)	1				
17	9.802-458.0	Switch, Pressure N/O, 1/4 NPT SS	1				
18	8.706-860.0	Tee, 1/2" Street	1				
19	9.802-131.0	Elbow, 1/2" JIC X 1/2" MPT, 90°	1				
20	8.707-057.0	Strainer, Plastic	1				
21	9.802-127.0	Nipple, 1/2" JIC x 3/8" Pipe	1				
22	8.753-028.0	Unloader VR54 w/ Knob 2175 Psi	1				
23	9.802-039.0	Elbow, 1/2 JIC x 3/8 MPT, 90°	1				
24	8.706-864.0	Plug, 1/8", Countersunk (3-30036D)	1				
25	9.802-251.0	Hose, Clear Vinyl	6 ft				
26	8.707-256.0	Pump Protector, 1/2" PTP, 140°	1				
27	8.933-006.0	Switch, Flow MV60	1				
28	9.804-064.0	Elbow, 1/8" MPT x 1/4" FPT Street 90 STL	1				

# HOSE & SPRAY GUN ASSEMBLY

2-11024D, 2-15024D, 3-11024D, 4-200, 2-11026D, 2-15026D  
 9.802-222.0 Wand, VP w/Coupler & Nozzle



3-300  
 8.917-585.0 Wand, Steam w/Flat Nozzle



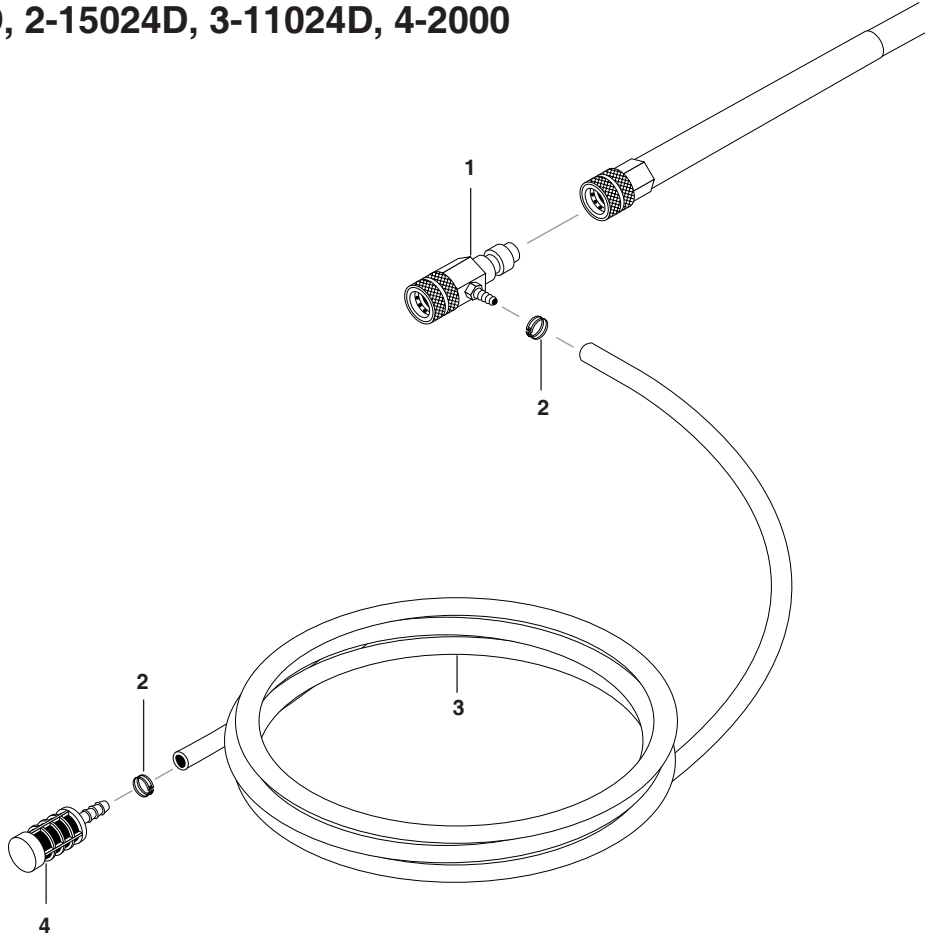
89172100-1

## HOSE & SPRAY GUN ASSEMBLY PARTS LIST

ITEM	PART NO.	DESCRIPTION	QTY	ITEM	PART NO.	DESCRIPTION	QTY	
1	9.802-166.0	Coupler, 3/8" Female	1	14	8.709-103.0	Clamp, 3/8", Steam Hose (3-300)	2	
	9.802-100.0	▲ Quick Coupler O-Ring Large	1					
2	8.916-740.0	Hose, 3/8" x 50', 1w, TS, SOXSW (2-11024D, 2-15024D, 3-11024D, 4-2000)	1	15	8.709-104.0	Hose Barb, 3/8", NPT, Steam Hose (3-300)	2	
		8.901-774.0	Hose, 3/8" x 30' (2-11026D, 2-15026D)	1	16	8.706-895.0	Nipple, 1/2" JIC x 3/8" FP #46 (3-300)	1
3	4.775-054.0	EASY! Force Advanced KNA (All except 3-300)	1		8.904-444.0	Steam Wand Complete w/Nozzle (includes Items 7-12) (3-300)	1	
4	9.802-222.0	Wand, VP, QC (All except 3-300)	1	17	8.712-346.0	Nozzle, SAQCMEG, 1504, Yellow (2-1100)	1	
	9.803-267.0	Repair Kit, AR, SS, Seat	1			8.712-333.0	Nozzle, SAQCMEG, 1503, Yellow (2-1500)	1
5	9.802-165.0	Coupler, 1/4" Male	1			8.712-354.0	Nozzle, SAQCMEG, 1505, Yellow (4-2000)	1
	9.802-096.0	▲ Quick Coupler O-Ring Small	1			8.712-358.0	Nozzle, SAQCMEG, 1505.5 Yellow (3-1100)	1
6	9.802-286.0	Brass Soap Nozzle	1	▲ Not Shown				
7	8.917-614.0	Nozzle, Steam, Flat Spray	1					
8	8.706-979.0	Coupling, 3/8" x 1/4" Reducing	1					
9	8.711-298.0	Spray Lance, 47" (3-300)	1					
10	9.802-066.0	Pad, Soft Rubber, 50 Duro (3-300)	1					
11	8.706-277.0	Elbow, 1/4", Pipe, 45°, Steel (3-300)	1					
12	8.706-301.0	Adapter, 1/4" x 3/8", Steel (3-300)	1					
13	8.711-849.0	Hose, 50' x 1/2", Steam Only (3-300)	1					

## DOWNSTREAM INJECTOR ASSEMBLY

2-11024D, 2-15024D, 3-11024D, 4-2000



### DOWNSTREAM INJECTOR ASSEMBLY PARTS LIST

ITEM	PART NO.	DESCRIPTION	QTY
1	9.802-215.0	Injector, Detergent, Non Adjust, .070 (4-011183)	1
	9.802-216.0	Injector, Detergent, Non Adjust, .083 (4-2000 Models Only)	1
2	8.740-345.0	Clamp, Hose, UNI .46 - .54	2
3	9.802-251.0	Tube, 1/4" x 1/2", Clear Vinyl	6 ft.
4	8.707-057.0	Strainer, 1/4", Hose Barb	1

# SPECIFICATIONS

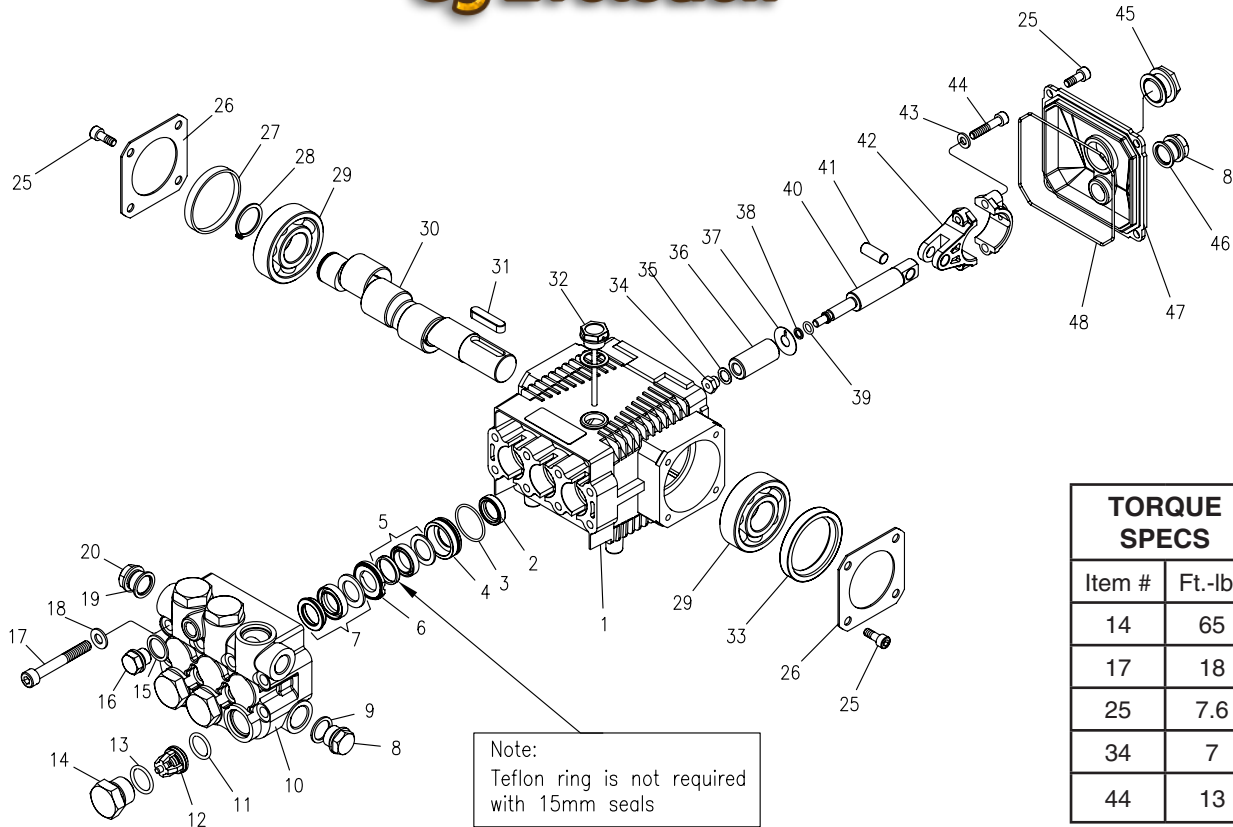
## WAYNE BURNER SPECIFICATIONS

Model No.	Burner Assy No.	Fuel Nozzle	Igniter	Burner Motor	Fuel Pump	Solenoid Coil	Electrode
HOT2-11024D	8.756-091.0	8.754-890.0	8.919-114.0	8.750-517.0	8754-706.0	9.802-640.0	8.750-778.0
HOT2-15024D	8.756-091.0	8.754-890.0	8.919-114.0	8.750-517.0	8754-706.0	9.802-640.0	8.750-778.0
HOT2-11026D	8.756-091.0	8.754-890.0	8.919-114.0	8.750-517.0	8754-706.0	9.802-640.0	8.750-778.0
HOT2-15026D	8.756-091.0	8.754-890.0	8.919-114.0	8.750-517.0	8754-706.0	9.802-640.0	8.750-778.0
HOT3-11024D	8.756-178.0	8.754-916.0	8.919-114.0	8.750-517.0	8754-706.0	9.802-640.0	8.750-778.0
HOT3-30036D	8.756-178.0	8.755-610.0	8.919-114.0	8.750-517.0	8754-706.0	9.802-640.0	8.750-778.0
HOT4-20024A	8.726-017.0	8.755-610.0	8.919-115.0	8.750-518.0	8754-706.0	9.802-640.0	8.750-778.0
HOT4-20024G	8.726-017.0	8.755-610.0	8.919-115.0	8.750-518.0	8754-706.0	9.802-640.0	8.750-778.0

## LD.1 SERIES PUMP EXPLODED VIEW

8.725-169.0 LD 3025R.1  
 8.904-857.0 LD 3030R.1  
 8.904-856.0 LD 4020R.1

# G3 Evolution



## LD.1 SERIES PUMP EXPLODED VIEW PARTS LIST

ITEM	PART NO.	DESCRIPTION	QTY	ITEM	PART NO.	DESCRIPTION	QTY
1	9.803-938.0	Crankcase	1	11*	9.803-947.0	O-Ring Ø1.78 x 15.54	6
2*	See Kits	Plunger Oil Seal	3	12*	See Kits	Valve Assembly	6
3*	See Kits	O-Ring Ø1.78 x 28.30	3	13*	9.803-948.0	O-Ring Ø2.62 x 18.77	6
4*	See Kits	Pressure Ring 15mm (3030)	3	14	9.803-949.0	Valve Plug	6
	See Kits	Pressure Ring 18mm (4020, 3025)	3	15	9.803-950.0	Copper Washer 1/4	1
5*	See Kits	U-Seal, 15mm (3030)	3	16	9.803-951.0	Brass Plug G1/4	1
	See Kits	U-Seal, 18mm (4020, 3025)	3	17	9.803-952.0	Manifold Stud Bolt	8
6*	See Kits	Intermediate Ring 15mm (3030)	3	18	9.802-884.0	Washer	8
	See Kits	Intermediate 18mm (4020, 3025)	3	19	9.803-198.0	Copper Washer 3/8	1
7*	See Kits	Intermed. Ring 15mm (3030)	3	20	9.802-925.0	Brass Plug 3/8	2
	See Kits	Intermed. Ring 18mm (4020, 3025)	3	25	9.802-939.0	Screw	12
8	9.802-926.0	Brass Plug 1/2"	1	26	9.803-953.0	Bearing Cover	2
9	9.803-199.0	Copper Washer 1/2"	1	27	9.803-954.0	Bearing Seal	1
10	9.803-946.0	Manifold Housing	1	28	9.802-914.0	Snap Ring	1
				29	9.803-955.0	Ball Bearing	2
				30	9.803-956.0	Crankshaft	1
				31	9.803-167.0	Crankshaft Key	1
				32	9.803-957.0	Oil Dipstick	1



## LD.1 SERIES PUMP EXPLODED VIEW PARTS LIST (CONT)

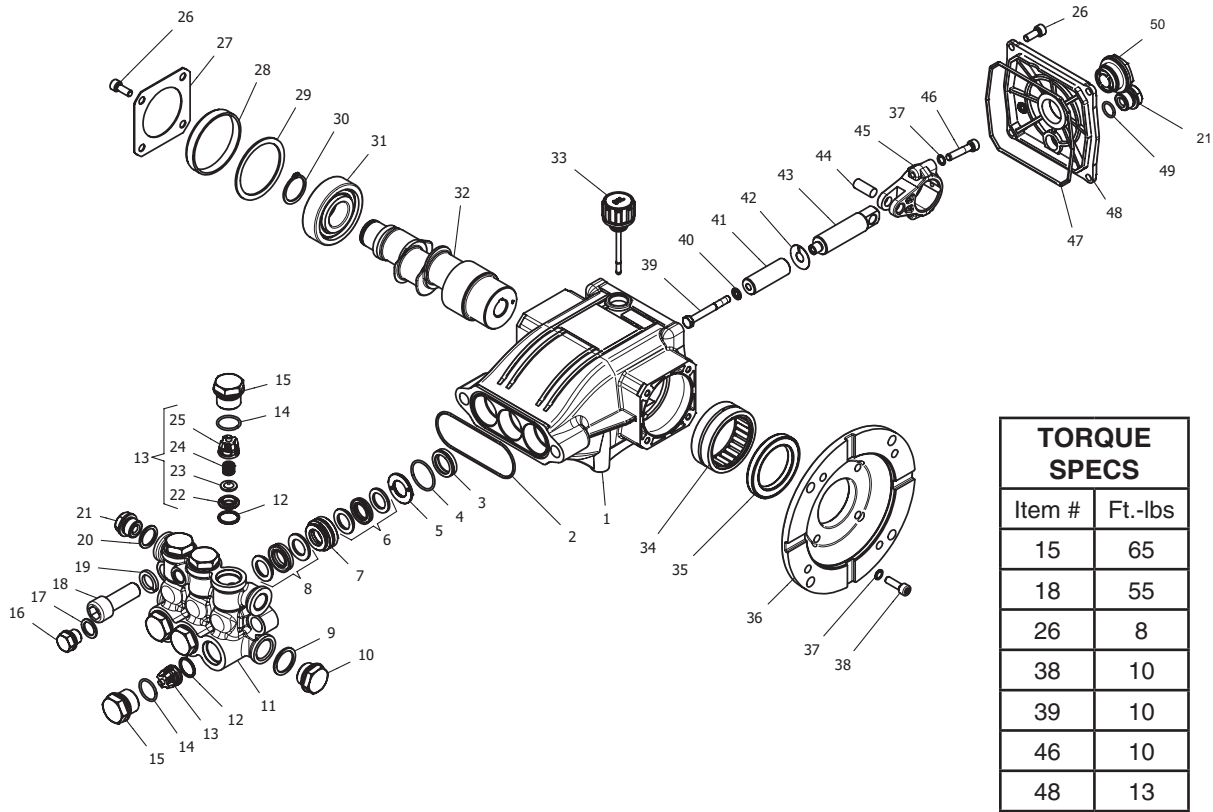
ITEM	PART NO.	DESCRIPTION	QTY
33	8.933-010.0	Crankshaft Seal	1
34*	See Kits	Plunger Nut	3
35*	See Kits	Copper Spacer	3
36*	See Kits	Plunger, 15mm (3030)	3
	See Kits	Plunger, 18mm (4020, 3025)	3
37*	See Kits	Copper Spacer	3
38*	See Kits	O-Ring Ø1.78 x 5.28	3
39*	See Kits	Teflon Ring	3
40*	See Kits	Plunger Rod	3
41	9.803-965.0	Connecting Rod Pin	3
42	9.803-966.0	Connecting Rod	3
43	9.803-218.0	Spring Washer	6
44	8.933-020.0	Connecting Rod Screw	6
45	9.803-202.0	Sight Glass	1
46	9.803-197.0	Gasket	1
47	9.803-968.0	Crankcase Cover	1
48	9.803-969.0	O-Ring Ø2.62 x 107.62	1

\* Available in kit (See below)

REPAIR KIT NUMBER	8.725-354.0	8.725-356.0	8.725-355.0	8.725-357.0	9.803-934.0	9.803-935.0	9.803-936.0	9.803-937.0
KIT DESCRIPTION	Plunger Seal 15mm LD-3030	Plunger Seal 18mm LD-3025 LD-4020	Complete Seal Packing, 15mm LD-3030	Complete Seal Packing, 18mm LD-3025 LD-4020	Plunger 15mm LD-3030	Plunger 18mm LD-3025 LD4020	Complete Valve	Plunger Oil Seals
ITEM NUMBERS INCLUDED	3, 5, 7	3, 5, 7	3, 4, 5, 6, 7	3, 4, 5, 6, 7	34, 35, 36, 37, 38	34, 35, 36, 37, 38	11, 12, 13	2
NUMBER OF CYLINDERS KIT WILL SERVICE	3	3	1	1	1	1	6	3

# LF SERIES PUMP EXPLODED VIEW

8.923-763.0 LF 2030S



TORQUE SPECS	
Item #	Ft.-lbs
15	65
18	55
26	8
38	10
39	10
46	10
48	13

## LF SERIES PUMP PARTS LIST

ITEM	PART NO.	DESCRIPTION	QTY	ITEM	PART NO.	DESCRIPTION	QTY
1	8.754-841.0	Crankcase	1	19	8.754-850.0	Washer, Lock	2
2	8.754-846.0	O-ring Ø1.78 X 72.75	1	20	9.803-198.0	Washer, Copper G3/8	1
3*	See Kits Below	Plunger Oil Seal	3	21	8.707-262.0	Plug, Brass G3/8	2
4*	See Kits Below	O-ring Ø1.78 X 26.7	3	22*	See Kits Below	Valve Seat	6
5*	See Kits Below	Washer, Pressure Ring	3	23*	See Kits Below	Valve Plate	6
6*	See Kits Below	U-Seal	3	24*	See Kits Below	Valve Spring	6
7*	See Kits Below	Pressure Ring	3	25*	See Kits Below	Valve Cage	6
8*	See Kits Below	U-Seal	3	26	9.802-939.0	Screw, M6 X 16	8
9	9.803-199.0	Washer, Copper G1/2	1	27	8.717-137.0	Bearing Cover	1
10	9.802-926.0	Plug, Brass G1/2	1	28	9.803-954.0	Bearing Seal	1
11	8.754-852.0	Manifold (16mm Models)	1	29	8.754-843.0	Seal Spacer, Crankshaft	1
	8.754-853.0	Manifold (14mm Models)	1	30	9.802-914.0	Snap Ring, 25 mm	1
12*	8.717-233.0	O-ring Ø1.78 X 15.6	6	31	9.803-955.0	Bearing, Ball	1
13*	See Kits Below	Valve Assembly	6	32	8.754-836.0	Shaft, 5/8" Hollow	1
14*	9.803-948.0	O-ring Ø1.78 X 18.77	6	33	8.754-219.0	Oil Dipstick	1
15	9.803-949.0	Valve Plug	6	34	8.754-840.0	Bearing Needle	1
16	8.754-851.0	Plug, Brass G1/4 (16mm Models)	1	35	8.754-826.0	Seal, Crankshaft	1
17	8.754-845.0	Washer, Copper G1/4 (16mm Models)	1	36	8.754-844.0	Flange, Motor	1
18	8.754-854.0	Bolt, Manifold M14 X 40	2	37	9.803-210.0	Washer	10
				38	8.752-824.0	Screw, 6 mm	4

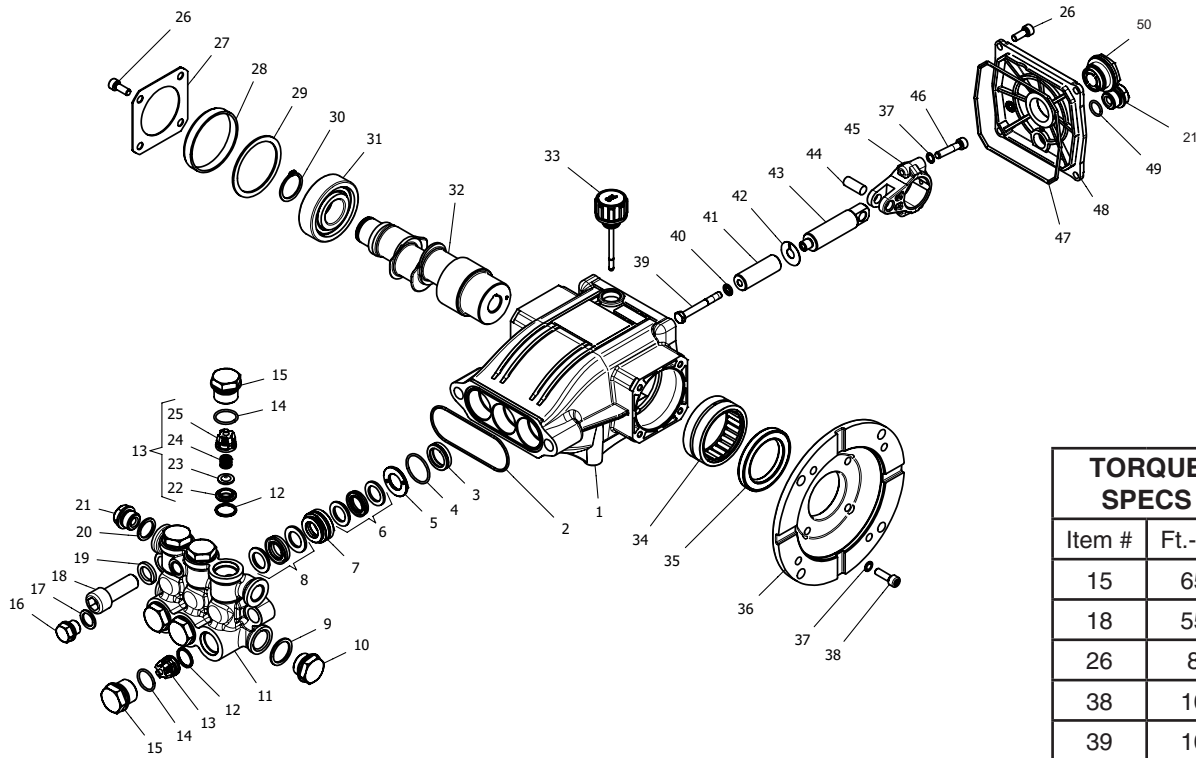
## LF SERIES PUMP PARTS LIST

ITEM	PART NO.	DESCRIPTION	QTY
39*	8.754-855.0	Bolt, Plunger	3
40*	8.754-092.0	Spacer, Copper	3
41	8.754-848.0	Plunger, 16mm	3
42	9.803-962.0	Spacer, Copper	3
43	8.754-827.0	Plunger Rod	3
44	9.803-965.0	Connecting Rod Pin	3
45	9.803-966.0	Connecting Rod	3
46	8.933-020.0	Screw, Connecting Rod	6
47	8.754-847.0	O-ring Ø2.62 X 111.62	1
48	8.754-842.0	Cover, Crankcase	1
49	9.803-906.0	O-ring Ø1.78 X 14	1
50	9.803-202.0	Sight Glass, G3/4	1

REPAIR KIT NUMBER	8.754-860.0	8.754-856.0	8.754-861.0	8.754-857.0	8.754-862.0	8.754-858.0	8.754-859.0	9.803-937.0
KIT DESCRIPTION	Plunger Seals 14 mm**	Plunger Seals 16 mm**	Seal Packing 14 mm**	Seal Packing 16 mm**	Plunger 14 mm**	Plunger 16 mm**	Complete Valve	Plunger Oil Seals
ITEM NUMBERS INCLUDED	4, 6, 8	4, 6, 8	4, 5, 6, 7, 8	4, 5, 6, 7, 8	39, 40, 41, 42	39, 40, 41, 42	12, 13, 14	3
NO. OF CYLINDERS KIT WILL SERVICE	3	3	1	1	1	1	6	3

# LF.1 SERIES PUMP EXPLODED VIEW

8.923-765.0 LF2830S.1



TORQUE SPECS	
Item #	Ft.-lbs
15	65
18	55
26	8
38	10
39	10
46	10

## LF.1 SERIES PUMP EXPLODED VIEW PARTS LIST

ITEM	PART NO.	DESCRIPTION	QTY	ITEM	PART NO.	DESCRIPTION	QTY
1	8.754-841.0	Crankcase	1	20	9.803-198.0	Washer, Copper G3/8	1
2	8.754-846.0	O-ring Ø1.78 X 72.75	1	21	8.707-262.0	Plug, Brass G3/8	2
3*	See Kit Below	Plunger Oil Seal	3	22*	See Kits Below	Valve Seat	6
4*	See Kit Below	O-ring Ø1.78 X 26.7	3	23*	See Kits	Below Valve Plate	6
5*	See Kit Below	Washer, Pressure Ring	3	24*	See Kits	Below Valve Spring	6
6*	See Kit Below	U-Seal	3	25*	See Kits	Below Valve Cage	6
7*	See Kit Below	Pressure Ring	3	26	9.802-939.0	Screw, M6 X 16	8
8*	See Kit Below	U-Seal	3	27	8.717-137.0	Bearing Cover	1
9	9.803-199.0	Washer, Copper G1/2	1	28	9.803-954.0	Bearing Seal	1
10	9.802-926.0	Plug, Brass G1/2	1	29	8.754-843.0	Seal Spacer, Crankshaft	1
11	8.754-852.0	Manifold	1	30	9.802-914.0	Snap Ring, 25 mm	1
12*	8.717-233.0	O-ring Ø1.78 X 15.6 6	6	31	9.803-955.0	Bearing, Ball	1
13*	See Kit Below	Valve Assembly	6	32	8.754-835.0	Shaft, 5/8" Hollow 2030F	1
14*	9.803-948.0	O-ring Ø1.78 X 18.77	6		8.754-836.0	Shaft, 5/8" Hollow 2030S	1
15	9.803-949.0	Valve Plug	6		8.754-837.0	Shaft, 5/8" Hollow 2830F	1
16	8.754-851.0	Plug, Brass G1/4	1		8.754-838.0	Shaft, 5/8" Hollow 2830S	1
17	8.754-845.0	Washer, Copper G1/4	1		8.754-839.0	Shaft, 5/8" Hollow 3530F	1
18	8.754-854.0	Bolt, Manifold M14 X 40	2	33	8.754-219.0	Oil Dipstick	1
19	8.754-850.0	Washer, Lock	2	34	8.754-840.0	Bearing Needle	1
				35	8.754-826.0	Seal, Crankshaft	1

## LF.1 SERIES PUMP EXPLODED VIEW PARTS LIST

ITEM	PART NO.	DESCRIPTION	QTY
36	8.754-844.0	Flange, Motor	1
37	9.803-210.0	Washer	10
38	8.752-824.0	Screw, 6 mm	4
39*	8.754-855.0	Bolt, Plunger	3
40*	8.754-092.0	Spacer, Copper	3
41	8.754-848.0	Plunger, 16mm (2030S, 2830S)	3
	8.754-849.0	Plunger, 14mm (2030F, 2830F, 3530F)	3
42	9.803-962.0	Spacer, Copper	3
43	8.754-827.0	Plunger Rod	3
44	9.803-965.0	Connecting Rod Pin	3
45	9.803-966.0	Connecting Rod	3
46	8.933-020.0	Screw, Connecting Rod	6
47	8.754-847.0	O-ring Ø2.62 X 111.62	1
48	8.754-842.0	Cover, Crankcase	1
49	9.803-906.0	O-ring Ø1.78 X 14	1
50	9.803-202.0	Sight Glass, G3/4	1

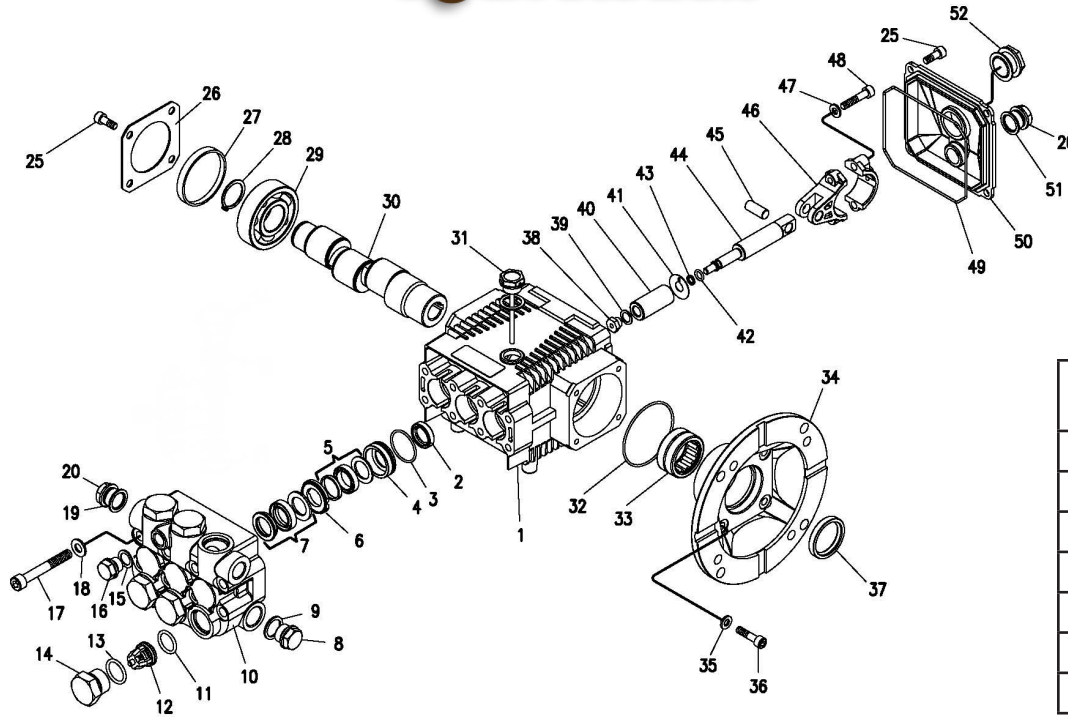
### REPAIR KITS

REPAIR KIT NUMBER	8.754-860.0	8.754-856.0	8.754-861.0	8.754-857.0	8.754-862.0	8.754-858.0	8.754-859.0	9.803-937.0
KIT DESCRIPTION	Plunger Seals 14 mm	Plunger Seals 16 mm	Seal Packing 14 mm	Seal Packing 16 mm	Plunger 14 mm	Plunger 16 mm	Complete Valve	Plunger Oil Seals
ITEM NUMBERS INCLUDED	4, 6, 8	4, 6, 8	4, 5, 6, 7, 8	3, 4, 5, 6, 7	39, 40, 41, 42	39, 40, 41, 42	12, 13, 14	3
NO. OF CYLINDERS KIT WILL SERVICE	3	3	1	1	1	1	6	3

## LE.1 SERIES PUMP EXPLODED VIEW

8.904-852.0 LE 3525F.1

# G<sub>3</sub> Evolution



TORQUE SPECS	
Item #	Ft.-lbs
14	65
17	18
25	7.6
36	8
38	7
48	13

## LE.1 SERIES PUMP EXPLODED VIEW PARTS LIST

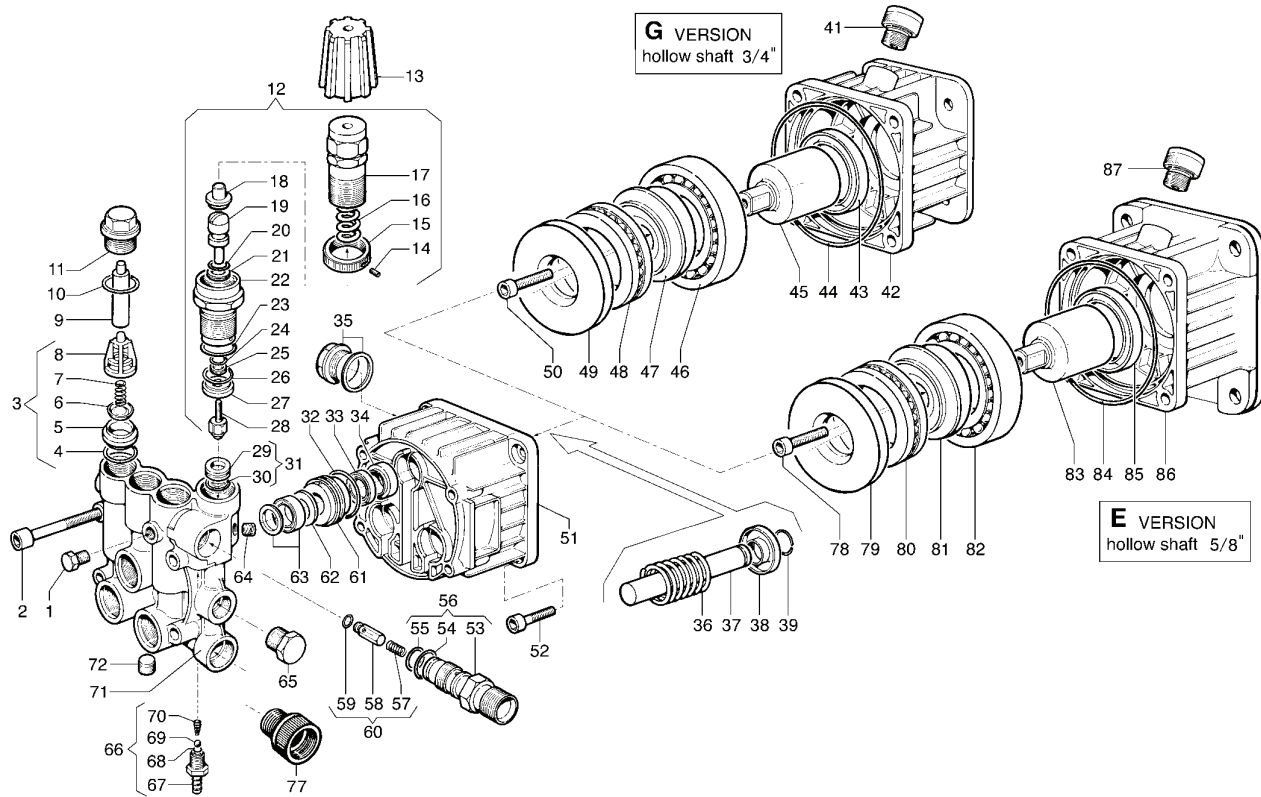
ITEM	PART NO.	DESCRIPTION	QTY	ITEM	PART NO.	DESCRIPTION	QTY
1	9.803-938.0	Crankcase	1	16	9.803-951.0	Brass Plug G1/4	1
2*	9.804-586.0	Plunger Oil Seal	3	17	9.803-952.0	Manifold Stud Bolt	8
3*	See Kit	O-Ring Ø 1.78 x 28.30	3	18	9.802-884.0	Washer	8
4*	See Kit	Pressure Ring 15mm	3	19	9.803-198.0	Copper Washer 3/8	1
	See Kit	Pressure Ring 18mm	3	20	9.802-925.0	Brass Plug G3/8	2
5*	See Kit	U-Seal, dia 15mm	6	25	9.802-939.0	Screw	12
	See Kit	U-Seal, dia 18mm	6	26	9.803-953.0	Bearing Cover	2
6*	See Kit	Intermediate Ring 15mm	6	27	9.803-954.0	Bearing Seal	1
	See Kit	Intermediate Ring 18mm	6	28	9.802-914.0	Snap Ring	1
7*	See Kit	U-Seal, 15mm	3	29	9.803-955.0	Ball Bearing	2
	See Kit	U-Seal, 18mm	3	30	9.804-576.0	Crankshaft (2020F)	1
8	9.802-926.0	Brass Plug G1/2	1		9.804-577.0	Crankshaft (2020S)	1
9	9.803-199.0	Copper Washer 1/2"	1		9.804-578.0	Crankshaft (2825F)	1
10	9.803-946.0	Manifold Housing	1		9.804-579.0	Crankshaft (2825S)	1
11	9.803-947.0	O-Ring Ø1.78 x 15.54	6		9.804-580.0	Crankshaft (3525F)	1
12*	See Kit	Valve Assembly	6	31	9.803-957.0	Oil Dipstick	1
13*	9.803-948.0	O-Ring Ø2.62 x 18.77	6	32	9.804-581.0	O-Ring Ø3.53 x 55.56	1
14	9.803-949.0	Valve Plug	6	33	9.804-582.0	Needle Bearing	1
15	9.803-950.0	Copper Washer 1/4	1	34	9.804-583.0	Motor Flange 56C	1
				35	9.803-210.0	Washer	4

## LE.1 SERIES PUMP EXPLODED VIEW PARTS LIST (CONT)

ITEM	PART NO.	DESCRIPTION	QTY
36	9.804-584.0	Flange Screw	4
37	9.804-585.0	Crankshaft Seal	1
38*	See Kit	Plunger Nut	3
39*	See Kit	Copper Spacer	3
40*	See Kit	Plunger 15mm (2020F, 2825F, 3525F)	3
	See Kit	Plunger 18mm (2020S, 2825S)	3
41*	See Kit	Copper Spacer	3
42*	See Kit	O-Ring Ø1.78 x 5.28	3
43*	See Kit	Teflon Ring	3
44	9.803-964.0	Plunger Rod	3
45	9.803-965.0	Connecting Rod Pin	3
46	9.803-966.0	Connecting Rod	3
47	9.803-218.0	Spring Washer	6
48	8.933-020.0	Connecting Rod Screw	6
49	9.803-969.0	O-Ring Ø2.62 x 107.62	1
50	9.803-968.0	Crankcase Cover	1
51	9.803-197.0	Gasket	1
52	9.803-202.0	Sight Glass	1

REPAIR KIT NUMBER	8.725-354.0	8.725-356.0	8.725-355.0	8.725-357.0	9.803-934.0	9.803-935.0	9.803-936.0	9.803-937.0
KIT DESCRIPTION	Plunger Seal 15mm 2020F.1 2825F.1 3525F.1	Plunger Seal 18mm 2020S.1 2825S.1	Complete Seal Packing 15mm 2020F.1 2825F.1 3525F.1	Complete Seal Packing 18 mm 2020S.1 2825S.1	Plunger 15mm 2020F.1 2825F.1 3525F.1	Plunger 18mm 2020S.1 2825S.1	Complete Valve	Plunger Oil Seals
ITEM NO'S INCLUDED	3, 5, 7	3, 5, 7	3, 4, 5, 6, 7	3, 4, 5, 6, 7	38, 39, 40, 41, 42, 43	38, 39, 40, 41, 42, 43	11, 12, 13	2
NO. OF CYLINDERS KIT WILL SERVICE	3	1	1	1	1	1	6	3

## AXD PUMP EXPLODED VIEW



## AXD PUMP EXPLODED VIEW PARTS LIST

ITEM	PART #	DESCRIPTION	KIT	QTY	ITEM	PART #	DESCRIPTION	KIT	QTY
1		Cap, 1/8"		1	23		O-Ring	E-F	1
2		Screw M8x55		4	24		O-Ring	E-F	1
3	8.721-936.0	Valve Kit		6	25		Ring	E-F	1
4	8.721-920.0	O-Ring, 1.78 x 12.42 A-D		6	26		O-Ring	E-F	1
5		Valve Seat	A	6	27		Ring	E-F	1
6		SUC/DEL Valve	A	6	28	8.721-956.0	Housing with Ball	E-F	1
7		Spring	A	6	29		Seat	E-F	1
8		Valve Cage	A	6	30		O-Ring	E-F	1
9		Spacer		2	31	8.721-957.0	Valve Seat		1
10		O-Ring, 1.78 x 17.77 A-D		6	32		O-Ring, 1.78 x 25.12 B-D		3
11		Plug		6	33	8.721-939.0	Piston Seal Ø14	B	3
12	8.721-935.0	Reg Val Kit for AX 180 Bar		1	34	8.721-899.0	Sealing Ring	D	3
13	9.841-646.0	Knob		1	35	8.721-965.0	Oil Level Plug		1
14	8.718-555.0	Stop, Adjustable Nut, M4x4	E	1	36		Spring		3
15	8.718-546.0	Nut	E	1	37	8.915-527.0	Piston	C	3
16	8.721-940.0	Spring,	E	1	38	8.721-892.0	Ring	C	3
17	8.721-906.0	Adjustable Knob	E	1	39	8.721-891.0	Ring Ø14	C	3
18		Seat	E	1	51		Pump Crankcase		1
19		Piston Rod	E-F	1	52		Screw M8x20		4
20		O-Ring	E-F	1	53		Injector Body M22 x 1.5	E	1
21		Ring	E-F	1		8.718-554.0	Injector Body, 3/8 NPT	E	1
22		Housing	E	1	54	8.721-920.0	O-Ring 1.78 x 12.42 D-E-F		1
					55		O-Ring, 1.78 x 15.6	E-F	1



## AXD PUMP EXPLODED VIEW PARTS LIST

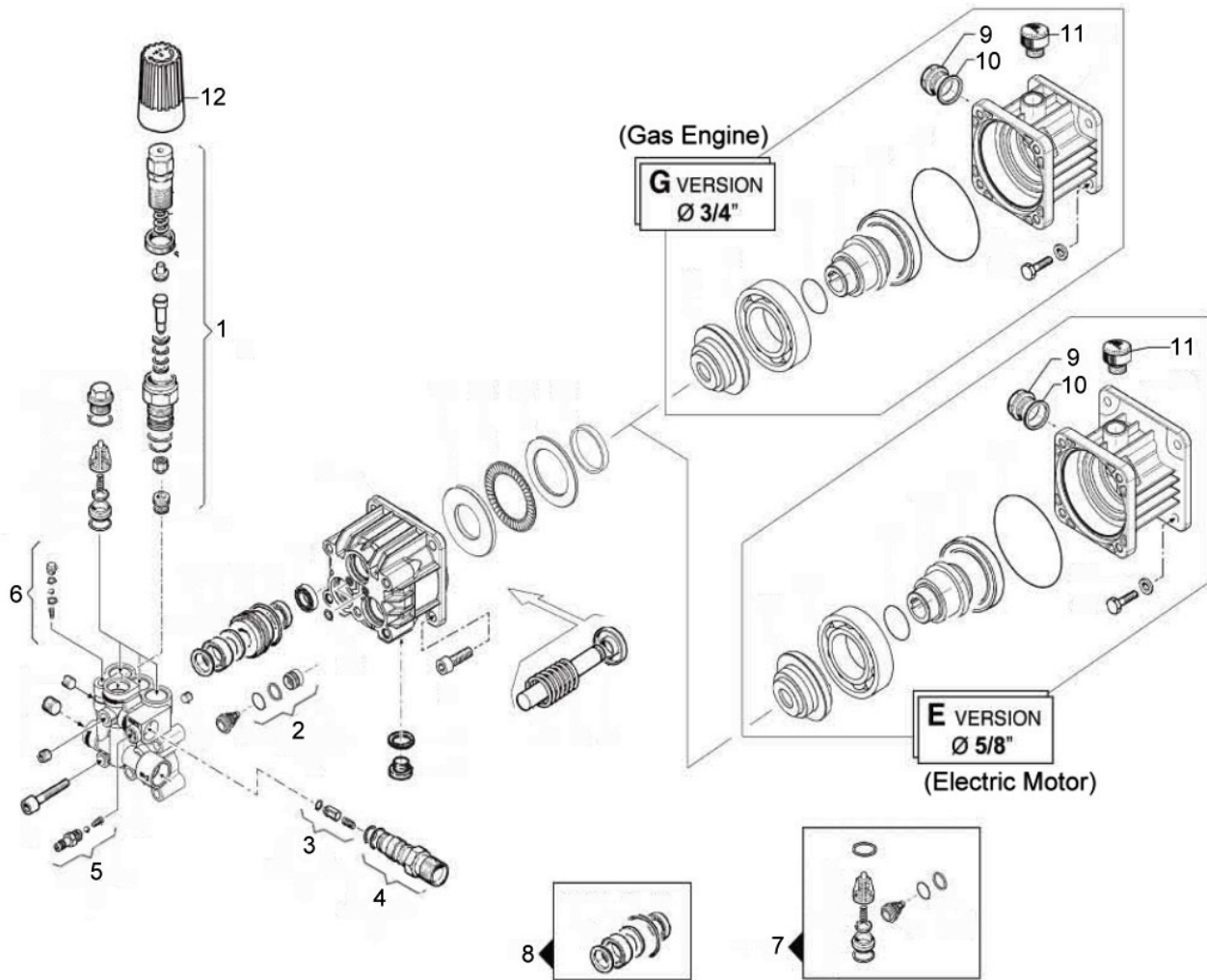
ITEM	PART NO.	DESCRIPTION	KIT	QTY
56	8.721-974.0	Injector Body Kit M22x 1.5 Injector Body Kit 3/8 NPT		1 1
57		Spring	E	1
58		Check Valve	E	1
59		O-Ring	E-F	1
60	8.721-948.0	Check Valve Kit		1
61	8.739-570.0	Ring		3
62	8.739-571.0	Ring	B	3
63	8.739-574.0	Piston Seal 150 Bar (2520G, 3020G, 3522G) Piston Seal 180 Bar (3025G)	B B	3 3
64		Plug 1/8 x 8		1
65		Plug 3/8 Gas OT58		1
66	8.718-551.0	Injector Kit		1
67		Hose Barb Fitting		1
68		O-Ring		1
69	8.739-577.0	Ball		1
70	8.739-575.0	Spring		1
71	8.718-553.0	Pump Valve Chamber		1
72		Plug 1/8 x 8		1
77		Garden Hose Tail		1

<b>Kit A</b>	8.721-997.0	Complete Valve Kit
<b>Kit B</b>	8.721-988.0 8.721-989.0	Piston Seal Kit, 150 Bar Piston Seal Kit, 180 Bar
<b>Kit C</b>	8.721-949.0	Piston Kit
<b>Kit D</b>	8.721-990.0	Seal Kit
<b>Kit E</b>	8.722-000.0 8.722-001.0	Overhaul Kit, M22 x 1.5 Overhaul Kit, 3/8" NPT
<b>Kit F</b>	8.722-002.0	Maintenance Kit

# COMET PUMP EXPLODED VIEW AND PARTS LIST

8.750-238.0

BXD2020E, 1.9@2000PSI, 5/8 Shaft

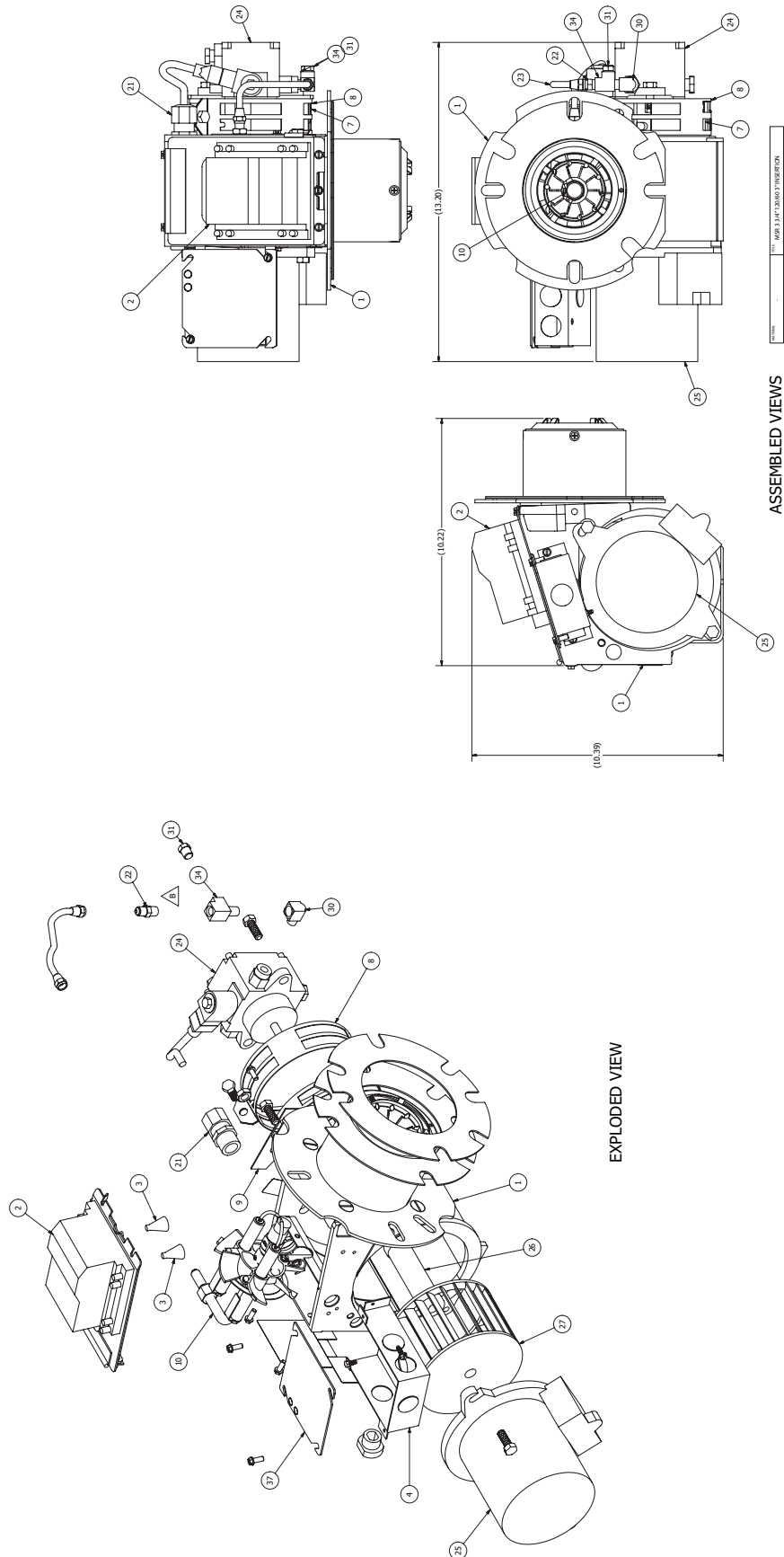


ITEM	PART NO.	DESCRIPTION	QTY
1	8.725-556.0	KIT, VALVE	1
2	8.725-557.0	KIT, SUCTION VALVE	1
3	8.725-558.0	KIT, CHECK VALVE	1
4	8.725-559.0	KIT, INJECTOR BODY	1
5	8.725-560.0	KIT, CHEMICAL COUPLING	1
6	8.725-561.0	KIT, EASY START	1
7	8.725-562.0	KIT, COMPLETE VALVE KIT	1
8	8.725-563.0	KIT, PISTON SEAL	1
9	8.725-564.0	OIL SITE GLASS	1
10	8.725-565.0	O'RING	1
11	8.725-566.0	OIL CAP	1
12	8.725-567.0	KNOB	1

# WAYNE BURNER EXPLODED VIEW

## Replacement Parts

For best performance specify genuine WAYNE replacement parts



## WAYNE BURNER PART LIST

### Replacement Parts

*For best performance specify genuine WAYNE replacement parts*

*Will be replace with KNA Number Part.\**

ITEM	PART NO.	DESCRIPTION	QTY
1	101397-001	Tube/Hous-101392-001/5A/3.5"/3"l	1
2	101295-002	Ignitor-D W/M Plate 120V	1
3	100990-001	Spring, Contact	2
4	8.756-296.0	Junction Box, EHASR	1
7	8.700-707.0	Air Band Inner "M"	1
8	8.700-708.0	Air Band Outer 8 Hole "M"	1
9	13392	Plate, Slot Cover	1
10	8.756-298.0	Gun Assembly, Burner-RG/*CST/*1 1/4"BB1	1
19	11141	Decal, UL-Under 3 GPH NON C57	1
21	37954-001	Strain Relief-Low Profile	1
22	14222	Connector, Male-3/16" X 1/8" IPT	1
23	8.700-704.0	Oil Line Assembly 6"	1
24	8.756-290.0	Pump - Combo/W Solenoid 120V	1
25	8.756-292.0	Motor 1/7 HP 120/60	1
26	8.700-822.0	Coupling "M"	1
27	8.700-726.0	Fan - 3.12 X 4.25"D 1/2" Bore	1
30	550053	Fitting, Elbow 90* Street 1/8	1
31	15766	Plug, Pipe HXHD 1/8" NPT	1
34	101274-001	Tee, Street-1/8 X 1/8 Brass	1
35	12407	Stopper, #4 CORK	1
36	8.700-692.0	Flange Gasket	2
37	8.756-741.0	Junction Box, EHASR, Black Cover	1



**LANDA<sup>®</sup>**

Kärcher Group

Form #8.917-210.0 • Revised 09/17A • Printed in U.S.A.