

Tricho-derm profiler

CONFIGURATION, USE AND MAINTENANCE MANUAL

Wireless digital microscope

Wi-Fi microscope
Inskam303



Table of contents

SECTION 1	4
DECLARATION OF CONFORMITY	4
MANUFACTURER'S DATA	4
Authorized Assistance Service	4
PRESENTATION OF THE MANUAL	4
Conventions	5
SECTION 2	6
WARRANTY	6
GENERAL SAFETY RULES	7
Notice	7
Safety standards	8
DESCRIPTION	8
TECHNICAL DATA	8
INTENDED USE	9
UNINTENDED USE	9
RESIDUAL RISKS	10
Operations which may cause risks for the user	10
SECTION 3	11
COMPONENTS	11
LOCATIONS	11
HANDLING	11
CONFIGURATION	11
Notice	11
Preliminary checks	12
Power supply and battery recharge	12
Configuration instructions for mobile devices (iOS / Android)	13
App for mobile devices: graphical interface and use	13
Configuration instructions for PC (Windows)	14
Configuration instructions for Mac (MacOS)	15

USE 16

Problems 16

Use procedures 16

INSTRUCTIONS FOR CHARGING THE DEVICE 17

SECTION 4 18

MAINTENANCE 18

Safety 18

Periodic maintenance 18

Extraordinary maintenance 18

DECOMMISSIONING AND DISPOSAL 18

Deactivation of the device 18

Disposal 19

PRIVACY 19

SECTION 1

Declaration of conformity Manufacturer's Data Presentation of the manual

DECLARATION OF CONFORMITY

The Wi-Fi micro-camera described in this documentation is sold accompanied by the declaration of conformity drawn up in accordance with applicable EU legislation.

MANUFACTURER'S DATA

Name of the Company	Rolland S.r.l.
Head office:	Via Giuseppe di Vittorio 11 – Loc. Cadriano – 40057 – Granarolo dell'Emilia (BO) - Italy
VAT number or Tax code	00820241206
Office Tel. no.	+39 051 767552
Fax.	+39-051763532
E-mail	info@oway.it
Website	www.oway.it

Authorized Assistance Service

The authorized assistance service on the product is performed directly by Rolland S.r.l.

PRESENTATION OF THE MANUAL



NOTE

ONCE YOU RECEIVE THE DEVICE, READ THIS MANUAL CAREFULLY BEFORE CARRYING OUT ANY OPERATION.

This manual contains instructions for the configuration, use, and maintenance of the Tricho-derm profiler (Wi-Fi microscope Inskam303 model). The manual consists of various sections (each of which deals with a series of topics) divided into chapters and paragraphs.

The general index lists all the topics covered in the entire manual. The numbering of the pages is progressive, and each page features the number of the same. This manual is intended for the user in charge of the configuration, use, and maintenance of the Tricho-derm profiler, and it is related to the device's technical life after its production and sale.

Before starting any operation, it is necessary to have at least read the entire manual and then studied the operations to be performed.

This manual contains proprietary information and may not even be partially supplied to unauthorized third parties for any use and in any form without prior written consent of Rolland S.r.l..

Rolland S.r.l. states that the information contained in this manual is compliant with the technical and safety specifications of the Tricho-derm profiler which the manual refers to.

A certified copy of this manual is stored in the device's technical file, kept at Rolland S.r.l.'s headquarters.

Rolland S.r.l. shall not recognize any document that has not been produced, released, or distributed by itself or its authorized representative.

Conventions

In order to obtain a more immediate understanding of the topics, the graphic and typographic symbols and conventions described below are adopted in the manual.



NOTE

NOTES CONTAIN IMPORTANT INFORMATION, HIGHLIGHTED OUTSIDE THE TEXT TO WHICH THEY REFER.



ATTENTION

WARNING SIGNALS INDICATE THOSE PROCEDURES WHOSE TOTAL OR PARTIAL NON-COMPLIANCE MAY CAUSE DAMAGE TO THE DEVICE OR ITS COMPONENTS, AND MAY EXPOSE PEOPLE TO DANGER.



DANGER

DANGER SIGNALS INDICATE THOSE PROCEDURES WHICH TOTAL OR PARTIAL NON-COMPLIANCE MAY CAUSE DAMAGE OR INJURY TO PEOPLE AND SERIOUS DAMAGE TO THE DEVICE.



DANGER OF ELECTROCUTION

AREA UNDER VOLTAGE.

Warranty

General safety rules

Description and technical data

Intended and Unintended Use

Residual risks

WARRANTY

The warranty terms and conditions, which are listed in full in the purchase contract, are valid only if the device is used in the conditions envisaged for the intended use.

Except for the operations described in the section labelled **MAINTENANCE** and carried out according to the procedures indicated, any repair or modification made to the Tricho-derm profiler by the user or by unauthorized companies will void the warranty.

The warranty does not extend to damage caused by inexperience or negligence in the use of the device, or by poor maintenance, or omission thereof.

The warranty is valid subject to the following terms and conditions:

1	For a period of 12 months from the date of purchase.
2	Replacement may be made, at the company's discretion, only after detailed check and incorrect assembly/operation is found.
3	Costs of transport and/or shipment for the repair or replacement of the device shall in all cases be at the purchaser's expense.
4	During the warranty period, any products replaced become the property of the manufacturer.
5	The only beneficiary of the warranty is the purchaser who has complied with the instructions given in the manual.
6	Company's liability ceases when the buyer assigns ownership of the product or modifications have been made to same.
7	The warranty does not include damage resulting from excessive stress, such as the use of the product after discovering a fault, the use of improper operating methods, or failure to observe the instructions for use and maintenance.
8	The company accepts no liability for any difficulties that may arise in the resale or use abroad due to the applicable provisions in the country where the product was sold.
9	The defective product will not be replaced without proof of purchase (invoice, copy of payment transaction).

Warning: if you intend to use the warranty, you must provide the following information:

1	Batch
2	Date of purchase (presentation of the purchase document)
3	Detailed description of the problem



NOTE

FAILURE TO COMPLY WITH THE METHODS OF OPERATION AND USE OF THE DEVICE DESCRIBED IN THIS DOCUMENTATION , WILL RESULT IN THE LOSS OF WARRANTY.

GENERAL SAFETY RULES

Notice

Please check that all the items listed in the **COMPONENTS** section are included in the product packaging and inform Rolland S.r.l. immediately of any components missing or documents which are illegible (even if only in part).

This chapter describes the general safety rules to be observed during any operation performed with the device. Operation procedures described in the following chapters must be performed by observing both the methods to be followed provided for in the instructions, and the general safety rules of this chapter.

The safety rules and the configuration, use and maintenance procedures indicated in this document are complementary to the general safety rules at workplace that must be observed.

Different countries may have different safety regulations. Please note therefore that in all cases where the documentation conflict with or are more restricted than the standards of the country in which Tricho-derm profiler is used, the national standards of that country shall prevail over those of the documentation.



NOTE

THE MANUFACTURER MAY UNDER NO CIRCUMSTANCES BE HELD LIABLE FOR ACCIDENTS OR CONSEQUENTIAL DAMAGES FOR INAPPROPRIATE USE OF THE DEVICE OR FOR FAILURE TO COMPLY, EVEN IN PART, WITH THE OPERATIONAL SAFETY RULES AND PROCEDURES DESCRIBED IN THE DOCUMENTATION.

Failure to comply with the instructions for its use and the methods of operation, configuration, use and maintenance of Tricho-derm profiler contained in the manual shall also result in the voiding of terms and conditions of warranty.

Safety standards

During the configuration and subsequent use of Tricho-derm profiler there may occur situations in which the device does not function correctly or in ways not envisaged in the documentation. These situations, which are completely abnormal, may sometimes be caused by environmental factors or accidental failures which could not have been anticipated by the manufacturer. We suggest keeping a spare copy of the manual at the disposal of the user and/or of the staff in charge of the management, maintenance, and use of the Tricho-derm profiler.



ATTENTION

SINCE IT WOULD BE IMPOSSIBLE TO DESCRIBE EVERY OPERATION THAT SHOULD NOT OR CANNOT BE DONE, IT IS HEREBY DEEMED THAT ANY OPERATION (OTHER THAN FOR NORMAL USE) THAT IS NOT EXPRESSLY DESCRIBED IN THE MANUAL PROVIDED IS TO BE CONSIDERED AS ONE WHICH SHOULD NOT OR CANNOT BE DONE.

DESCRIPTION

The device subject of the present manual and called Tricho-derm profiler is an innovative, wireless digital microscope with a compact and lightweight design ideal for salons and beauty centres. The new Oway tool for professional trichological and dermocosmetic consulting services.

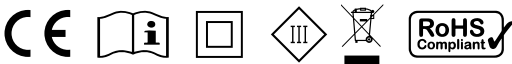
Tricho-derm profiler is an indispensable tool by OWAY for hairstylists and other beauty professionals because it offers technological support in the important consultancy phase. Thanks to the micro-camera it is possible to take photos and videos in high definition to analyze the state of hair, scalp and skin and recommend the most appropriate OWAY products and treatments.

Tricho-derm profiler is equipped with an integrated Wi-Fi network that can connect to iOS and Android phones and tablets. The device can also be connected to the PC via USB cable.

TECHNICAL DATA

Mechanical data	
Dimensions	L 136 x Ø30 mm
Weight	137 g
External material	PC+ABS, terracotta
Electrical data	
Power supply	220 V A.C. – 5 V D.C.
Frequency	50 Hz
Absorbed power	14 dB
Input	1 x Micro USB
Battery	1 x Lipo 800 mAh

Technical data	
Camera performances	2 Megapixel
Magnification	50-1000 X
Resolution	1920*1080 P
Compatible operating systems	Android 4.3 iOS 8.0 Windows vista/7/8/10 MacOS X 10.8 or later
Radio data	
Radio transmitter	Wi-Fi
Radio frequency	2,4 GHz
Maximum radio-frequency transmitted	0,9-1,2 W



INTENDED USE

The Tricho-derm profiler is a device intended to be used in salons and beauty centers to perform the analysis of hair, scalp and skin.

The analysis performed is exclusively of aesthetic nature, and the device cannot be used in any way for medical and diagnostic purposes.

UNINTENDED USE

There is no use other than those described in the paragraph titled **DESCRIPTION** and **INTENDED USE**.

It is also absolutely prohibited:

- To use the device with non-compliant power lines.
- To use the device for applications different from those indicated.
- To modify the device (hardware and firmware).

The reuse of any unit after the device has been taken out of service releases the manufacturer from any liability deriving from its use.



NOTE

THE MANUFACTURER CANNOT BE HELD IN ANY CASE RESPONSIBLE FOR ACCIDENTS OR DAMAGE ARISING FROM THE UNINTENDED USE OF THE DEVICE. MOREOVER, ANY UNINTENDED USE ALSO CAUSES THE TERMINATION OF THE WARRANTY PERIOD.

RESIDUAL RISKS

Rolland S.r.l. carried out an in-depth risk analysis on the device in question during the design phase.

This analysis revealed risks that cannot be eliminated due to their nature. These risks were then examined individually and the instructions on how to avoid them were emphasized in this manual. It is therefore important that any user in charge of configuration, use, and maintenance of the Tricho-derm profiler has previously read the manual.



NOTE

THE MANUFACTURER CANNOT BE HELD IN ANY CASE RESPONSIBLE FOR ACCIDENTS OR DAMAGE ARISING FROM THE UNINTENDED USE OF THE DEVICE CAUSED BY NEGLIGENCE ON THE PART OF THE USER.

In particular:

- It is absolutely forbidden to make any changes to the device. Any damage to people, animals, or things resulting from the use of the device improperly modified by an unauthorized operator shall relieve the manufacturer of all responsibility.
- Carefully keep a copy of this manual, which is necessary for the correct and safe use of the Tricho-derm profiler.
- Should the external structure (the PC + ABS shell) have sharp edges due to accidental impact such as to make it dangerous, it is necessary to contact Rolland S.r.l..

Important

- Do not wet the electrical connections and Tricho-derm profiler with water or other liquids.
- The maintenance operations described in the manual must be carried out.
- Maintenance operations must be done following the instructions described in this manual.

Operations which may cause risks for the user

During start-up operations, follow the general accident prevention regulations.

In particular:

- if working on electrical parts, make sure they are not live.

Already during the design phase, solutions have been adopted aimed at making the use of the device safe in all phases of use: transport, assembly, adjustment, use, and maintenance. Nevertheless, not all possible risks for either users or the environment have been eliminated, both for technological reasons (device reliability) and for management reasons (excessive difficulty); consequently, the residual risks present are reported in the manual.

Components

Locations

Handling

Configuration

Use

COMPONENTS

The device is supplied inside a metal box.

Inside the box you will find:

- Tricho-derm profiler
- 220 V A.C. – 5 V D.C. Battery charger
- USB-Micro USB cable
- Instructions for use
- Terracotta base to house the tool when not in use

LOCATIONS

It is good to keep in mind some aspects before proceeding with the handling and subsequent use of the device. In particular, it is necessary to verify some factors:

- The use and storage area of the device must be chosen so that it cannot be in contact with water, jets of steam, or corrosive acids. Absolutely avoid subjecting it directly to atmospheric agents.
- Operating temperature range: from 5°C to +30°C
- Storage temperature range: from -10°C to +55°C
- Maximum relative humidity: 80% (without condensation).

HANDLING

The weight of the device is shown both in this manual and on the packaging. Given its size and weight, it can be moved manually by a single user. Never handle the device by grasping the charger cable, which could be irreversibly damaged.

CONFIGURATION

Notice

The configuration of the Tricho-derm profiler must be performed after verifying that the electrical system to which it will be connected while charging the battery is compliant with current regulations, provided with a grounding line and a circuit breaker. The product has been designed, manufactured, and tested to meet all specific standards (see the declaration of compliance), if correctly set up.

If the configuration, use and/or maintenance of the device are not carried out in a proper manner, anomalies may occur during use, and safety problems may also occur. Improper configuration and maintenance invalidates the warranty.



ATTENTION

THE DEVICE CAN BE OPERATED ONLY AFTER IT HAS BEEN CORRECTLY SET UP.

Before configuring and operating the device, completely remove any protections against dust or moisture and any packaging material.

Preliminary checks

Check for damage

Check that the various parts of the device do not present physical damage due to impact, tears or abrasions.

Check in particular:

- that there are no signs or dents indicative of impact occurred during transport;
- that the micro-USB input is not damaged;
- that the device glass is not damaged;
- that the supplied accessories are not damaged.

The lighting system (natural and/or artificial) of the configuration and use area must ensure the following minimum illumination: 200 lux.

Damage reporting procedure

If any damage is found, stop the procedure in progress and report the nature of the damage found to Rolland S.r.l..

Power supply and battery recharge



NOTE

THE MANUFACTURER CANNOT BE HELD IN ANY CASE RESPONSIBLE FOR ACCIDENTS OR DAMAGE ARISING FROM THE USE OF THE DEVICE IN AN ELECTRICAL SYSTEM THAT IS NOT COMPLIANT WITH CURRENT REGULATIONS.

To recharge the device's battery, follow the steps below:

- connect the micro-USB cable to the device input
- connect the charger plug to a power outlet.

After performing the abovementioned steps, the Tricho-derm profiler will begin to recharge. A red light will be on during the charging process; the red light will turn off when the device is fully charged. Use of the device during recharging is not recommended. Once charging procedure is complete, disconnect the Tricho-derm profiler by performing the steps backwards.

Configuration instructions for mobile devices (iOS / Android)



1. DOWNLOAD AND INSTALL THE APP

a. **iOS:** Search for “OWAY Tricho-derm profiler” in the App Store, download and install the application.

b. **Android:** Search for “OWAY Tricho-derm profiler” on Google Play Store, download and install the application.

2. TURN ON THE DEVICE

To turn on the device, press and hold the power button until the blue light flashes.

3. WI-FI CONNECTION

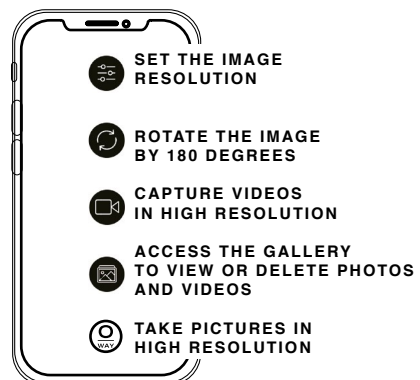
Set the Wi-Fi mode on the mobile device and select the “OWAY Tricho-derm profiler” Wi-Fi network. When the Wi-Fi connection is active the blue light will stop flashing. Once connected, open the OWAY Tricho-derm profiler App.

4. USE

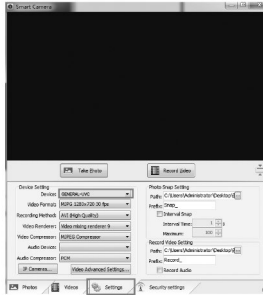
In the photo/video capture phase, rotate the magnification ring to properly focus image. LED light brightness can be adjusted to improve video image display.

App for mobile devices: graphical interface and use

With the OWAY TRICHO-DERM PROFILER App the user can:



Configuration instructions for PC (Windows)



1. DOWNLOAD THE SOFTWARE

Download and install the software on the www.oway.it site from new Tricho-derm profiler tool dedicated section.

2. TURN ON THE DEVICE

To turn on the device, press and hold the power button until the blue light flashes.

3. USB CONNECTION

Use the USB cable provided to connect the Tricho-derm profiler to your PC. Open the software downloaded from the oway.it website. In the main configuration interface, set to "GENERAL-UVC" to use the device.

4. USE

In the photo/video capture phase, rotate the magnification ring to properly focus image. LED light brightness can be adjusted to improve video image display.

Warning: buttons on the Tricho-derm profiler tool are not active when the device is connected to the PC via USB cable. Photo and video capture processes can be started using the software.

Configuration instructions for Mac (MacOS)



1. ACCESS THE PRE-SET APPLICATION

Look for the pre-set application “Photo Booth” in the Finder.

2. TURN ON THE DEVICE

To turn on the device, press and hold the power button until the blue light flashes.

3. USB CONNECTION

Use the USB cable provided to connect the Tricho-derm profiler to your Mac. Open the “Photo Booth” application.

In the main configuration interface, set to “GENERAL-UVC” to use the device.

4. USE

In the photo/video capture phase, rotate the magnification ring to properly focus image. LED light brightness can be adjusted to improve video image display. Warning: the buttons on the Tricho-derm profiler tool are not active when the device is connected to the Mac using a USB cable. Photo and video capture processes can be started by using Photo Booth application.

USE

Problems

In the case of instrument malfunction, please read the following instructions to solve any potential problems:

Problem	Solution
No video image	<ol style="list-style-type: none">1. Check the Wi-Fi settings on the tablet or mobile phone and check that the device is correctly connected to Tricho-derm profiler2. Close and re-open the App3. Turn the device off and then on4. Turn off data connection
Blurred video image	<ol style="list-style-type: none">1. Remove protective cover2. Adjust the focus
Video image not very bright	<ol style="list-style-type: none">1. Toggle LED button to increase image brightness
Device crash	<ol style="list-style-type: none">1. Press power and zoom in buttons simultaneously to reset Tricho-derm profiler

If any unexpected or dangerous fault occurs during start-up and use phase of the Tricho-derm profiler, the user is recommended to carry out the following procedure:

- Turn off Tricho-derm profiler
- Plug Tricho-derm profiler into power supply again
- If the malfunction persists, disconnect power supply and contact Rolland S.r.l. immediately

Use procedures

Recommendations before use

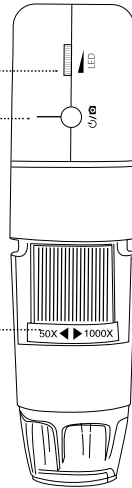
1. Perform a complete recharge of the Tricho-derm profiler before using it for the first time. Do not charge the device via a computer but connect it to an electricity socket.
2. Remove the protective cover before use and replace it after use.
3. The Wi-Fi connection only works with mobile phones and tablets. To connect the Tricho-derm profiler to the computer, connect it using the USB cable supplied.
4. Do not touch the lens with your fingers.

Introduction to product operation

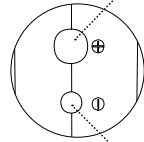
TO INCREASE OR
REDUCE BRIGHTNESS

TO TURN THE DEVICE
ON AND OFF / TO TAKE
PICTURES

TO REDUCE OR
INCREASE ZOOM
AND PUT THE
IMAGE IN FOCUS



TO INCREASE
MAGNIFICATION



TO REDUCE
MAGNIFICATION

INSTRUCTIONS FOR CHARGING THE DEVICE

1. When the battery level is low, the blue light will flash for 10 seconds before turning off.
2. Connect the device to the power outlet using the power supply. A red light will be on during the charging process; the red light will turn off when the device is fully charged. Use of the device during recharging is not recommended.
3. The device's built-in battery is a lithium battery with a capacity of 800 mA. The device can be used for three hours after complete recharge.

Maintenance

Decommissioning and disposal

MAINTENANCE

Safety

Periodic maintenance operations must be performed after reading the manual.

Any type of cleaning and maintenance operation must always be carried out with the system turned off and unplugged. When carrying out these operations, carefully follow the instructions given in this manual.



DANGER

DISCONNECT THE DEVICE FROM ITS POWER SUPPLY BEFORE CARRYING OUT ANY CLEANING OR MAINTENANCE OPERATION.



For any maintenance and cleaning operations, in addition to the indications contained in this manual, general safety rules and, if applicable, general safety regulations in force at the place where these operations are carried out must be observed.

Periodic maintenance

From time to time it is necessary to clean the Tricho-derm profiler from any accumulation of dust and dirt that may have formed on its outer surface. Use a non-abrasive cloth, free of alcohol or aggressive solvents.

Do not use abrasive sponges, chemical solvents or detergents. When cleaning, do not allow water to get in touch with internal electrical parts.

Extraordinary maintenance

There is no extraordinary maintenance procedure for this device. In case of failure, the defective product will be replaced by Rolland S.r.l. as defined by the warranty.

DECOMMISSIONING AND DISPOSAL

Deactivation of the device

Once the end of its technical and operational life has been reached, the device must be decommissioned and put in conditions of no longer being used for the purposes for which it was designed and built, making it possible to re-use the raw materials that constitute it.

The same deactivation procedures must be observed in all of the following cases:

- Decommissioning of the device and storage in the warehouse.
- Final decommissioning and subsequent disposal.



NOTE

THE MANUFACTURER DOES NOT ASSUME ANY RESPONSIBILITY FOR DAMAGE TO PERSONS OR THINGS ARISING FROM THE RE-USE OF INDIVIDUAL PARTS OF THE DEVICE FOR FUNCTIONS OR IN ASSEMBLY CONFIGURATIONS DIFFERENT FROM THE ORIGINAL ONES. THE MANUFACTURER REFUSES ANY IMPLIED OR EXPLICIT STATEMENT OF COMPLIANCE FOR SPECIFIC PURPOSES OF PARTS OF THE DEVICE RE-USED AFTER THE FINAL DEACTIVATION IN VIEW OF DISPOSAL OF THE DEVICE.

Disposal

The possibility of reusing certain parts of the device falls under the user's complete responsibility.

The label displays the symbol indicated in Legislative Decree No. 49 dated 14 March 2014 which transposes Directive 2012/19/EU, indicating the need to dispose of the product in recycling, specifically among electrical and electronic waste. For more information, consult the waste collection center located in your area.

Specific symbol:



NOTE

THE MANUFACTURER IS NOT IN ANY WAY RESPONSIBLE FOR DAMAGE CAUSED BY THE DEVICE IF NOT USED IN ITS FULL VERSION AND FOR THE USE AND THE MODE OF USE SPECIFIED IN THIS MANUAL. THE MANUFACTURER IS NOT IN ANY WAY RESPONSIBLE FOR DAMAGE TO PERSONS OR THINGS ARISING FROM THE RECOVERY AND USE OF PARTS OF THE DEVICE AFTER ITS DISPOSAL.



PRIVACY

Wi-Fi-MICROSCOPE - TRICHO-DERM PROFILER (hereafter, Tricho-derm profiler), the software (hereafter, software) and the application Tricho-derm profiler (hereafter, App) are produced by third parties in P.R.C. and supplied by Rolland S.r.l..

Rolland S.r.l. has not participated nor does it participate in any way in the production of Tricho-derm profiler, nor in the management, maintenance and updating of the related software and/or App. Tricho-derm profiler, the software and the App have not been designed to perform personal data processing operations under EU Reg. No. 679/2016. However, the user of such products might in any case carry out, through them, activities that could be classified as personal data processing under applicable legislation.

The user of Tricho-derm profiler, software and App must therefore be aware of the following:

- a) the images of Tricho-derm profiler, if associated with a natural person, could theoretically be of such a kind as to reveal their state of health. It is therefore absolutely not recommended to link the photos and/or videos processed with Tricho-derm profiler to any personal references (i.e. first name and last name) of the individuals to whom the images refer. In such a situation, processing might take place of particular categories of personal data of such a kind as to reveal the state of health of an individual;
- b) where the Tricho-derm profiler, the software and the App are used by the user to perform personal data processing operations, the user will be the only person responsible for such processing operations in respect of the data subjects;
- c) where the Tricho-derm profiler, software and App were to be used by the user to perform personal data processing operations, such information would be stored in software or an application whose operation and maintenance are carried out by the aforementioned third party manufacturing companies based in the P.R.C.. Data processing thus performed could therefore also lead to the transfer of the personal data outside the EU to the P.R.C., a country which to date is not recognized by the European Commission as adapted to Art. 45 of EU Reg. No. 679/2016;
- d) Rolland S.r.l. is not aware of and cannot view any data stored in the software and/or on the App by the user through the Tricho-derm profiler. Therefore where these tools are used by the user to carry out the processing of personal data, Rolland S.r.l. would not be participants in any way in such activities and the user will be the sole owner of the related processing.

It is therefore advisable not to use the instruments for purposes unrelated to the trichological and dermocosmetic analysis and not to enter and/or save information of such a kind as to identify or render identifiable any individual (name, telephone number, etc.).



www.oway.it

ROLLAND - VIA DI VITTORIO 11, 40057 GRANAROLO E. - BOLOGNA - ITALY
TEL. +39 051 767552 - E-MAIL: INFO@OWAY.IT