

CØR.restore

QUICK START GUIDE



One Product. Multiple Services. Immediate Results.

Technology of CØR.restore

CØR.restore uses a blend of Amino Acids and Organic Elements that work together to repair, protect and rebuild the keratin structure within the hair. CØR.restore will build the protein deep within the hair shaft and give maximum hydration to the hair.

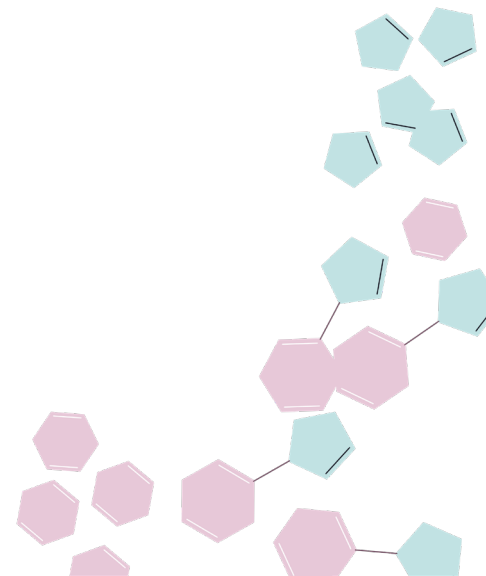


Amino Acids/Complex of Organic Elements

- Wheat and Soy - Plant Based
- Threonine - Helps Promote Collagen
- Serine - Anti-Static and Conditioning
- Glycine - Conditioning Agent
- Alanine - Conditioning Agent
- Valine - Protein Builder
- Proline - Collagen Builder
- Isoleucine - Conditioning Agent
- Histidine - Humectant

Multiple IN-SALON Services

1. Lightening/Bleaching
2. Coloring
3. Semi Color
4. Demi Color
5. Lowlights
6. Perming and Straightening
7. Stand Alone Treatment



2 Parts = 2 Steps



Part 1 – LIQUID

CØR.restore Liquid works within all chemical services to re-link the internal disulfide bonds that can typically be broken, and protects the keratin bonds that are in hair naturally.

Part 2 – BALM

CØR.restore Balm is a restorative cream with a blend of Amino Acids and Organic Elements to help repair and re-plump the hair. It also protects and hydrates the hair due to its high molecular weight to seal and protect the outer layers.

How to Use CØR.restore

1. Color/Semi/Demi/Lowlights
 - Add 1mL of Part 1 to every 10g color (Measured without Activator)NOTE: 5mL is the maximum amount recommended or necessary.
2. Lightening/Bleaching
 - Add 2mL of Part 1 to every 10g lightener (Measured without Activator)NOTE: 10mL is the maximum amount recommended or necessary
3. Perming and Straightening – TREATMENT AFTER SERVICE
 - Rinse out Neutralizer
 - Apply Part 1 to midshaft & ends
 - Process 5 minutes & Rinse
 - Apply Part 2
 - Leave on 5 minutes & Rinse
4. Stand Alone Treatment = 3 Variations

Good Condition	3mL of Part 1	20g of Part 2
Compromised	6mL of Part 1	20g of Part 2
Highly Compromised	9mL of Part 1	20g of Part 2

Step by Step

1. Shampoo + Rinse + Towel Dry
2. Mix according to condition above.
3. Apply to midshaft and ends first.
4. Process 5-10 minutes (Low heat can be used with processing cap).

Additional Benefits

1. Color Lock – Prevents Fading
 - Color
 - Lowlights
 - Pastels
2. NO EXTRA TIMING
3. NO CHANGE OF ACTIVATOR

Pricing

Recommended Pricing = \$30+

- Recommended price when used within a chemical service = \$30+ ADD-ON
- Recommended price for STAND-ALONE TREATMENT = \$30-\$50+

** All depending on the demographic area, density and length of the hair.*

CØR.restore

MIXING RATIOS



SEMI - DEMI - SUPER BLONDES		
2 mL Part 1	20g color	40 mL Activator
3 mL Part 1	30g color	60 mL Activator
4 mL Part 1	40g color	80 mL Activator

PERMANENT		
2 mL Part 1	20g color	30 mL Activator
3 mL Part 1	30g color	45 mL Activator
4 mL Part 1	40g color	60 mL Activator

LIGHTENER/BLEACH		
4 mL Part 1	20g Lightener/Bleach	50/60 mL Activator
8 mL Part 1	40g Lightener/Bleach	100/120 mL Activator

PAINT POWDER		
1 mL Part 1	10g Paint Powder	10-20 mL Activator
2 mL Part 1	20g Paint Powder	20-40 mL Activator

STANDALONE TREATMENT		
Good Condition	3 mL of Part 1	20g of Part 2
Compromised	6 mL of Part 1	20g of Part 2
Highly Compromised	9 mL of Part 1	20g of Part 2

Need help? Call us at 1-888-213-4744 or send an e-mail to: help@simplyorganicbeauty.com