

# MAXPEDITION®

**WOLFSPUR™**  
CROSSBODY SHOULDER BAG  
OWNER'S MANUAL




**WLFBLK**  
*Black*



**WLFGRY**  
*Gray*

**WLFTAN**  
*Tan*

## Model WLF

 **SIZE** 11 x 7 x 13 in  
27.9 x 17.8 x 33.0 cm

 **CAPACITY** 670 cu in  
11 L

 **WEIGHT** 2.3 lb  
1.1 kg

 **FABRICS** 500D Hex Ripstop Nylon  
1000D Plain Weave Nylon



Teflon® is a registered trademark of The Chemours Company FC, LLC, used under license by Maxpedition



# FEATURES

# WOLFSPUR™

Crossbody shoulder bag optimized for concealed carry

Reinforced seatbelt webbing shoulder strap with quick release

Main compartment sized to fit most tablets

Fully loop-lined and lockable CCW compartment

Stowable adjustable waist belt

Curved shoulder pad included

Custom fabricated Shapeshift™ webbing handle

Oversized pull tab secured by double snaps

Custom molded fleece-lined semi-rigid pocket

Excellent CCW access with 17 linear inches of zipper opening

Expandable bottle pocket with dual zipper garages

Attachment Lattice System - ATLAS™



# FEATURES - FRONTAL

# WOLFSPUR™



Curved shoulder pad included



Fully loop-lined and lockable CCW compartment



Oversized pull tab secured by double snaps



Main compartment sized to fit most tablets



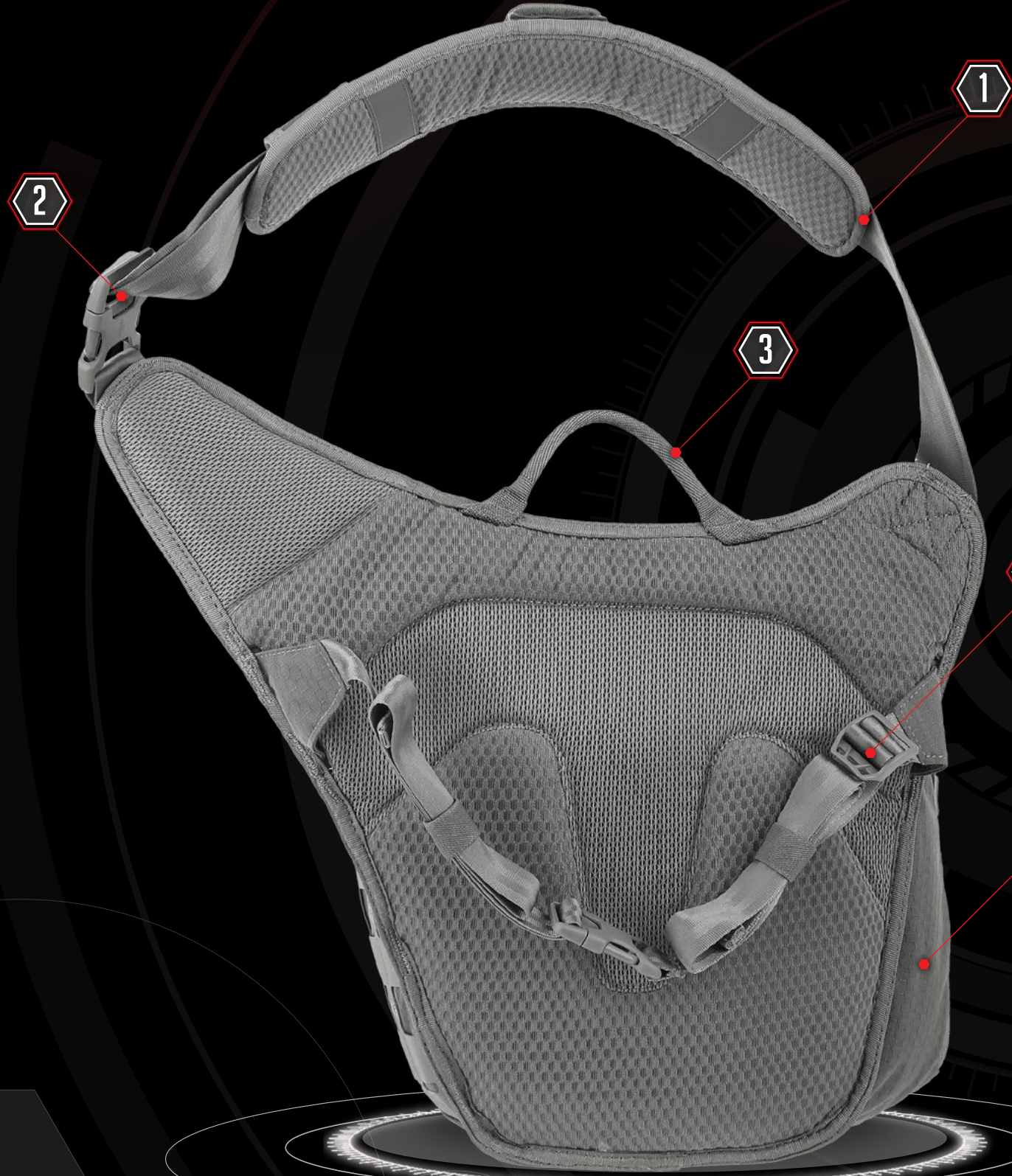
Custom molded fleece-lined semi-rigid pocket



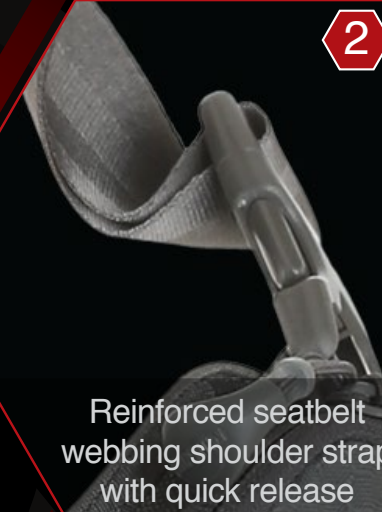
Attachment Lattice System (ATLAS™)

# FEATURES - REAR

# WOLFSPUR™



Crossbody shoulder bag optimized for concealed carry



Reinforced seatbelt webbing shoulder strap with quick release



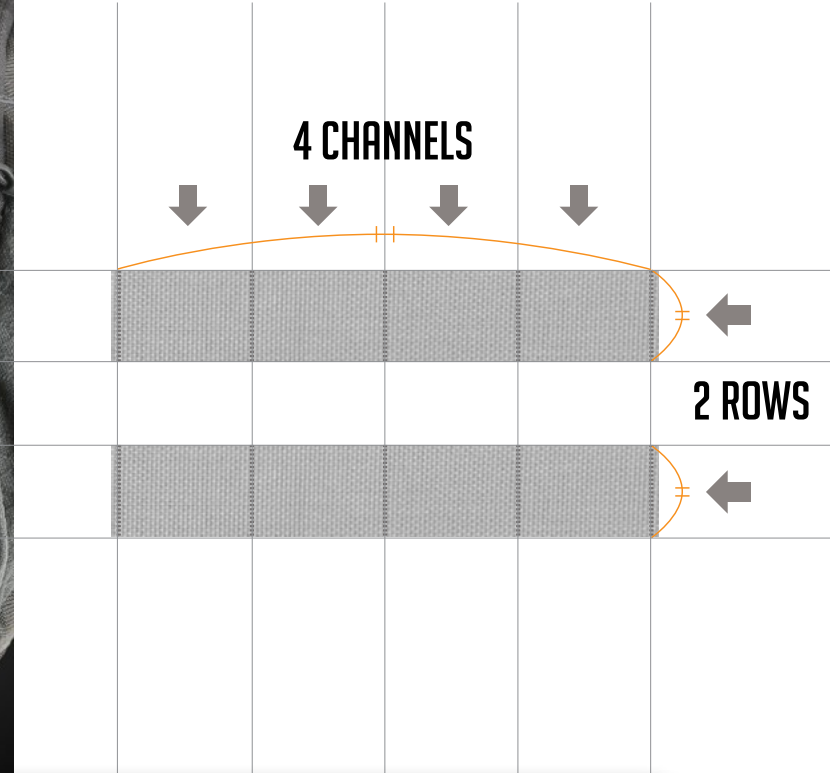
Custom fabricated Shapeshift™ webbing handle



Stowable adjustable waist belt



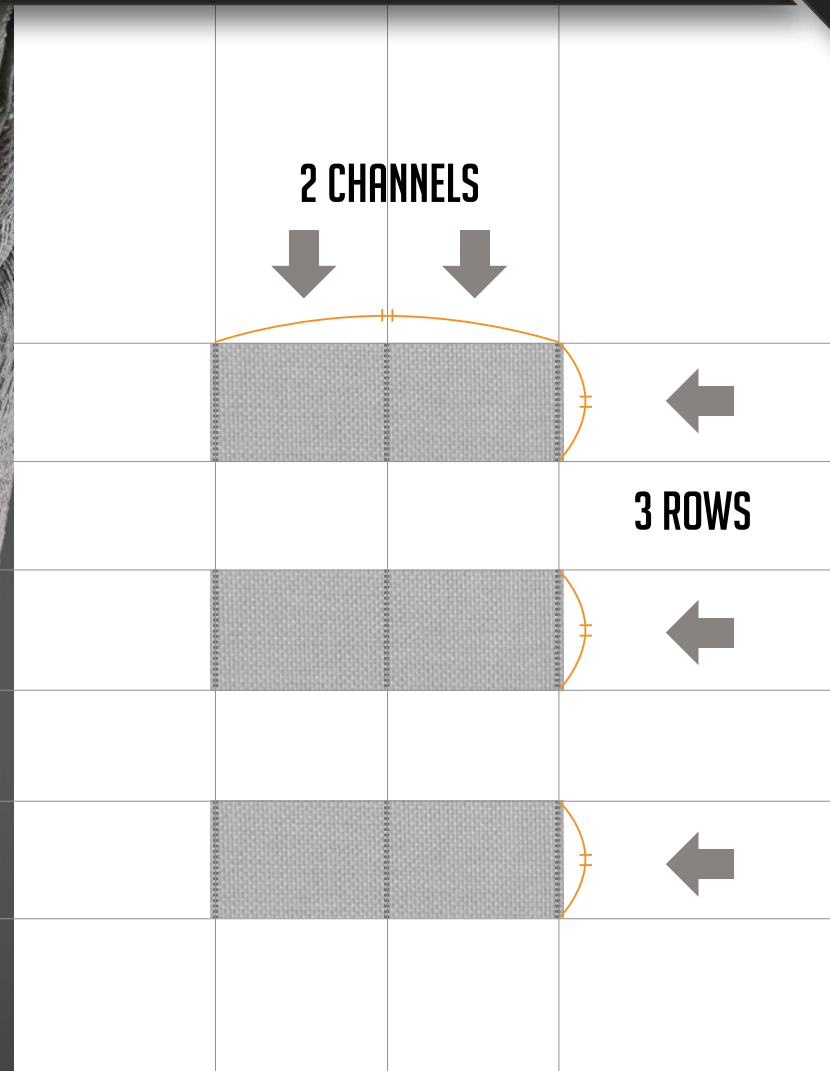
Expandable bottle pocket with dual zipper garages



## ATTACHMENT LATTICE SYSTEM - ATLAS™

ATLAS™ panels, which are cut from an ultra-tough 840-Denier Nylon-TPU composite, can be used for easy attachment of MOLLE-compatible pouches. The composite material is resistant to water, weather, heat, cold, UV and abrasion.

## MOLLE/PALS EQUIVALENT



### TO ATTACH ACCESSORIES USING THE TACTIE® POLYMER JOINING CLIPS:



1 Slide the clip through attachment backing of the pouch until head catches, then insert tail under the first row on the pack/garment.



2 Weave the tail back through the next row on the pouch.



3 Weave the tail through the next row on the pack/garment.



4 Repeat weaving process as needed depending on the length of the clip.



5 Insert the tail under the bridge, making sure both the tab and the tooth have both clicked into place.



6 Maximum strength and security are achieved when the pouch and the pack/garment are fully interwoven.



## LOCKABLE CCW COMPARTMENT

Loops on the zipper sliders allow you to lock the CCW compartment, keeping your valuables safe and secure. Close the zippers until the loops are overlapping, put the lock through, and secure the lock. Maxpedition® recommends a TSA approved lock when traveling.

## POSITIVE GRIP ZIPPER PULLS

Positive grip zipper pulls are designed to fit a finger in order to get a better grip when opening/closing zippers. They also allow you to grab them from any direction and get a positive grip.



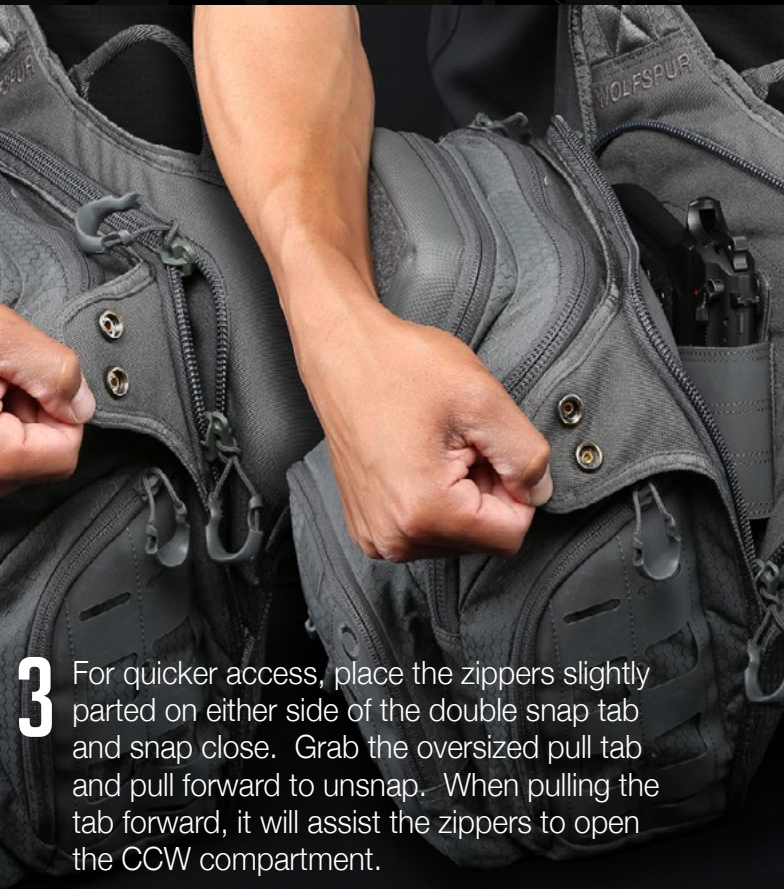
**1** The most secure option is to have the zippers mated and locked, keeping your valuables safe and secure. Bring the zipper sliders together until the locking loops are overlapping, put the lock through, and secure the lock. Maxpedition® recommends a TSA approved lock when traveling.



**2** The next secure option is to have the zipper sliders mated, but unlocked. This will keep contents secure, while allowing quicker access to the CCW compartment due to no lock.



## 4 DIFFERENT SETTINGS FOR SECURING AND OPENING THE CCW COMPARTMENT



**3** For quicker access, place the zippers slightly parted on either side of the double snap tab and snap close. Grab the oversized pull tab and pull forward to unsnap. When pulling the tab forward, it will assist the zippers to open the CCW compartment.



**4** For the fastest draw, have the compartment pre-opened to your comfort level and snap the oversized pull tab closed. Grab the oversized pull tab and pull forward to unsnap and open the CCW compartment.

# FUNCTIONS - FRONTAL

## CUSTOM MOLDED FLEECE-LINED SEMI-RIGID POCKET

With a semi-rigid exterior and soft interior, this pocket is ideal for storing sunglasses, electronics, and valuables that you do not want to get scratched or broken. A loop-lined field has been added to the exterior to attach morale patches.



## CUSTOM FABRICATED SHAPESHIFT™ WEBBING HANDLE

This specially developed narrow fabric transitions seamlessly between flat to round cross sections. Flat webbing may be abrasive on hands, so the rounder Shapeshift™ webbing makes the pack more comfortable to hand carry.



# FUNCTIONS - REAR

# WOLFSPUR™



To open the bottle pocket, slide the zipper down. Slide the zipper pull into the lower zipper garage to keep it from dangling and making noise. Unhook the buckle and place the bottle into the pocket. Place the cord over the top of the bottle and engage the buckle to keep the bottle secure.

If more bungee cord is needed to secure the bottle, go into the main compartment, untie the bungee, and then retie with the knot closer to the ends. Tuck any excess bungee into the mesh pocket provided.

## EXPANDABLE BOTTLE POCKET WITH DUAL ZIPPER GARAGES

To compress the bottle pocket, remove any objects, then fold in the buckle and fabric gusset. Remove the zipper pull from the lower garage and slide the zipper up. Insert the zipper pull into the upper garage to keep it from dangling and making noise.





## FUNCTIONS - INTERNAL

# WOLFSPUR™



## STOWABLE AND ADJUSTABLE WAIST BELT

The waist belt can be stowed away if you prefer not to use it. To stow the waist belt, release the belt buckle and fold in each side of the belt. Tuck the buckles and webbing into the enclosed areas until all components are securely stored.

To adjust the waist belt, buckle around your waist. For the front section, grab the loose end of the webbing with your closest hand and grab the buckle with your other hand. Pull the loose webbing until the fit is snug and the pack weight is distributed evenly. For the rear section, pull the adjuster buckle up and pull the webbing forward to tighten. Use the elastic loops to keep excess webbing from hanging loose.



## FLEECE-LINED SEMI-RIGID POCKET

With a semi-rigid exterior and soft interior, this pocket is ideal for storing sunglasses, electronics, and valuables that you do not want to get scratched or broken. A Gossamer™ mesh pocket is also included for additional organization.

## FRONT ADMIN COMPARTMENT

Pockets and sleeves are available to keep small and medium objects organized and secure. A Keyper™ is supplied in the front pocket, which allows you to easily attach and locate your keys.

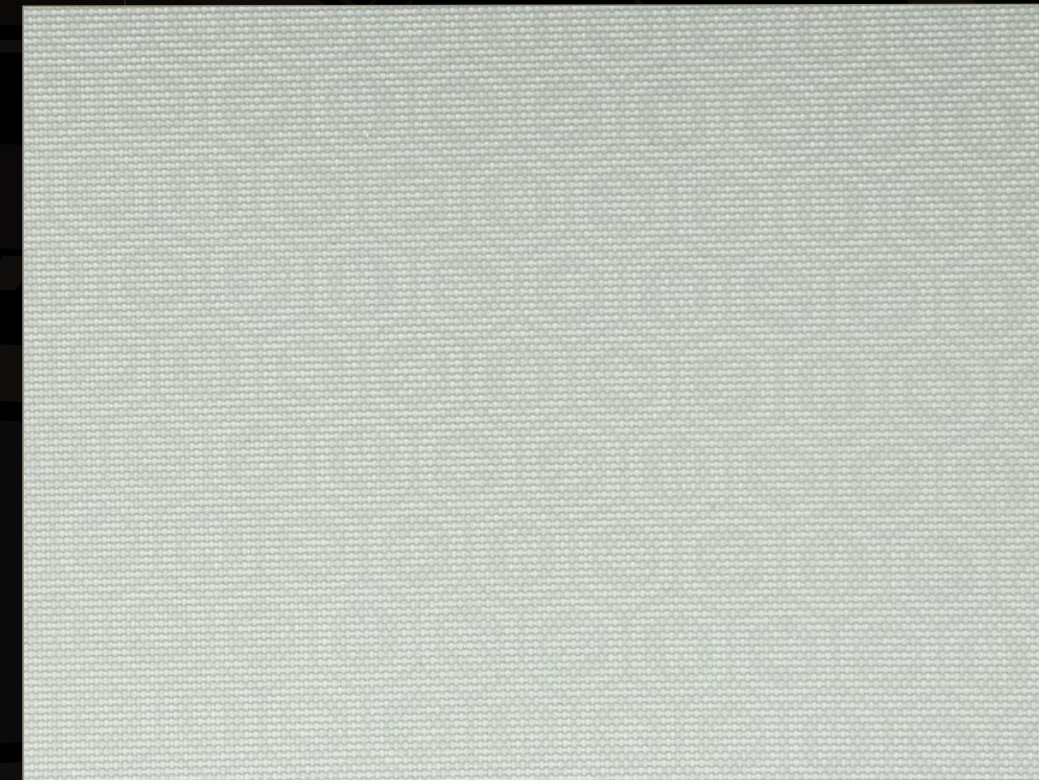


# FUNCTIONS - INTERNAL

# WOLFSPUR™

## MAIN COMPARTMENT

Multiple Gossamer™ mesh pockets and elastic straps can be used to keep your gear stored properly and in multiple configurations. A padded pocket designed to fit most tablets has been included. A high visibility grayscale interior makes finding objects much easier.



## SUBTLE HEXAGON PATTERN FABRIC

The inside is lined with a gray 420-Denier nylon fabric. The fabric is heat-embossed with a light tessellated hexagon pattern and can only be seen in certain angles of light. This serves as an anti-counterfeit measure so you know you are getting a genuine Maxpedition® product. To check for the hexagon fabric, open the main compartment of the pack. Slowly move the pack back and forth so that different angles put lighting on the fabric. If the hexagons cannot be seen in the fabric, it is not a genuine Maxpedition® product.

## STASH POCKET

A small pocket, perfect for change or very small items that can easily get lost, has been provided near the quick release buckle. Use the Positive grip zipper pulls to open.



## FRAY-RESISTANT GOSSAMER™ MESH

Gossamer™ mesh pockets are a medium gray while other details such as elastic loops and zippers are dark gray, providing visually distinguishable areas for gear storage. The Gossamer mesh is also partially see-through in order to view contents without opening the pockets.



# CARE TIPS

## GENUINE YKK® ZIPPERS AND ZIPPER TRACKS

To increase the longevity of the YKK® zippers and tracks:

- Zippers should be kept away from directly striking hard objects (e.g. stones etc.).
- Avoid improper treatment of the painted (coated) zippers, such as direct striking, scratching, or wearing against hard objects.
- Do not apply strong or high concentrations of bleaching agents.
- Do not forcibly close a zipper in a bag that has been overfilled.
- If a slider is caught on thread or cloth, do not free the slider by force. Pull the slider back, removing the trapped thread or cloth. When the slider bites deeply into cloth, do not force it back but work it back gently.



## CLEANING INSTRUCTIONS

- After each trip, thoroughly clean your pack.
- Rinse your pack with fresh water if dirt, sweat, salt and stains have worked their way into fabrics, webbing or mesh.
- To clean, simply wipe down with a damp cloth and allow the gear to dry naturally in a well-ventilated area out of direct sunlight.
- Do not machine wash.
- Do not use detergent or bleach on fabrics or webbing.
- Clean the zippers using a mild soap, warm water and a soft brush. Flush water and soap through the buckles. Keeping dirt and debris out of the zippers and buckles will help keep them in proper working condition.



# COMPONENTS & MATERIALS

# WOLFSPUR™



YKK® Zippers with Positive Grip Zipper Pulls



Refined Construction with Elegant Inlays



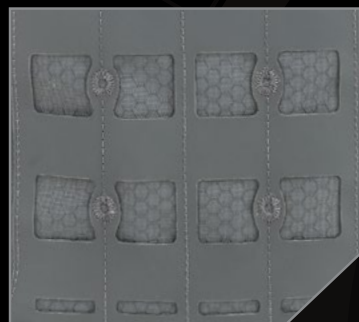
Very Visible Grayscale Interior



Lightweight Anti-Break Duraflex® Xlite® Buckles



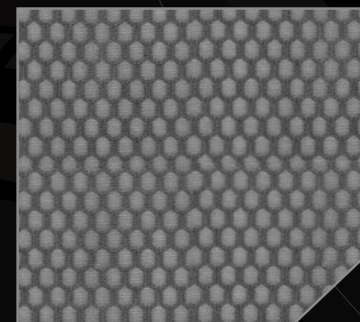
Dual Nylon Fabric Construction 500D Hex Ripstop / 1000D Plain Weave



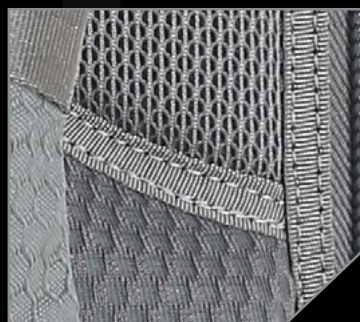
ATtachment LAttice System - ATLAS™ Cut from 840D Nylon-TPU Composite



Skin Friendly Nylon Seatbelt Webbing



Fray-Resistant Gossamer™ Mesh



Bi-Level High Grade 3D Airmesh Backing



Expandable Bottle Holder with Dual Zipper Garages



Custom Fabricated Shapeshift™ Webbing Handle



Circular Reinforcement Bartacks



Custom Molded Fleece-Lined Semi-Rigid Pocket



Oversized Curvilinear CCW Compartment Opening



Anti-Counterfeit Logo Embossed 420D Nylon Liner

## CONTACT

Phone: 310.768.0098  
 Fax: 310.515.5950  
 General: Info@Maxpedition.com  
 Customer Service: CS@Maxpedition.com  
 Government: Gov@Maxpedition.com  
 Wholesale: Dealer@Maxpedition.com

## CONNECT

Maxpedition.com  
[www.Facebook.com/Maxpedition](https://www.facebook.com/Maxpedition)  
[www.Twitter.com/Maxpedition](https://www.twitter.com/Maxpedition)  
[www.Maxpedition.TV](http://www.Maxpedition.TV)  
[www.Instagram.com/Maxpedition](https://www.instagram.com/Maxpedition)  
[www.MaxpeditionInAction.com](http://www.MaxpeditionInAction.com)

## DISCLAIMER

Maxpedition will not be held responsible for typographical errors, technical inaccuracies, or omissions. It is the responsibility of the customer to determine the suitability of Maxpedition products for use in his/her particular application, to follow all firearms safety rules, and to abide by all applicable laws.

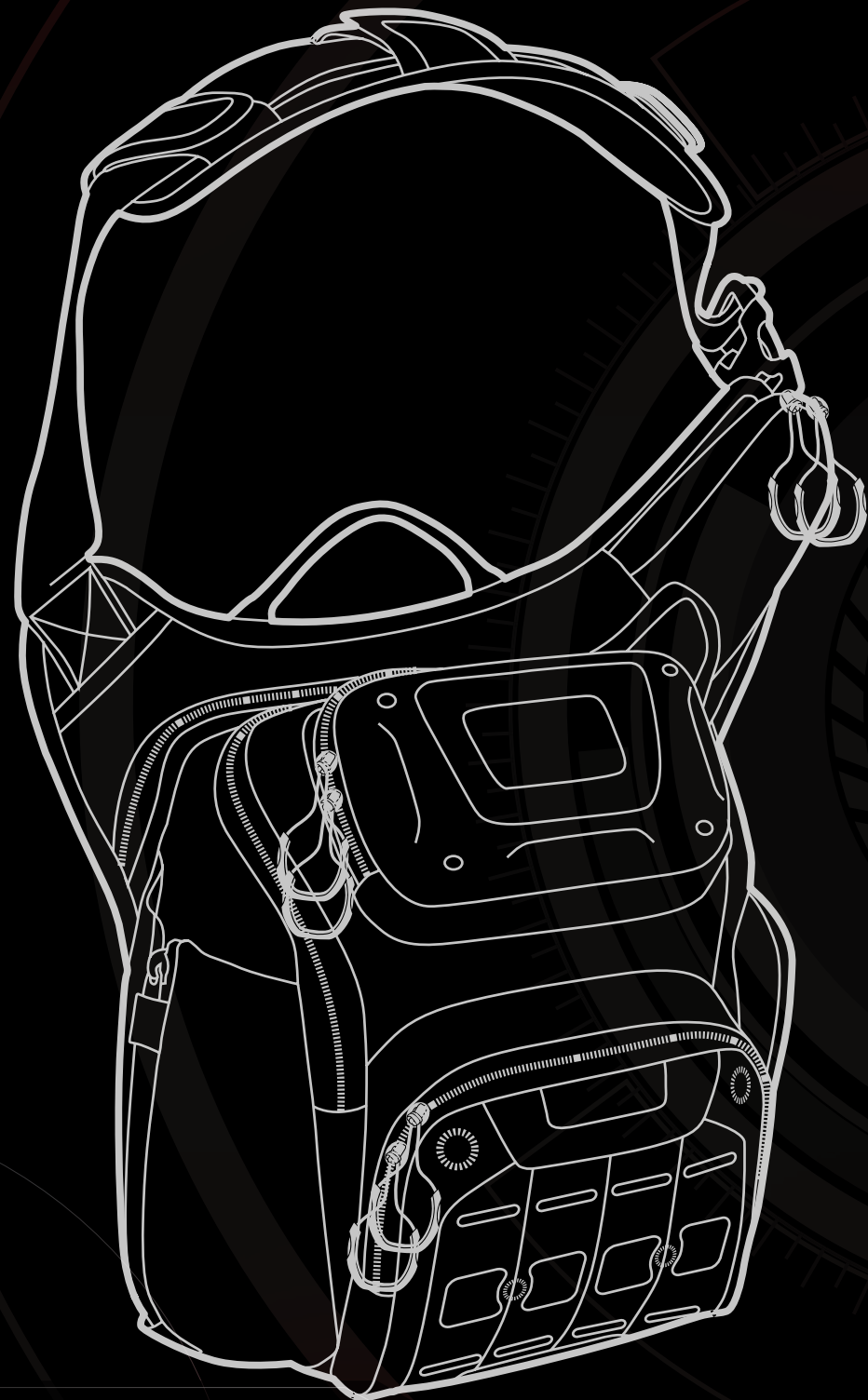
## IP

Maxpedition stylized font and footprint logo, Maxpedition word mark, Gearslinger, Versipack, Rollypoly and TacTie are federally and/or internationally registered trademarks of Edgygear Inc. Products depicted in this catalog are protected by U.S. or international patents and/or patents pending.



Copyright © 2016 Edgygear Inc. All Rights Reserved.

# MAXPEDITION®



**WOLFSPUR™**

**AGR™** *ADVANCED  
GEAR RESEARCH*