

MAXPEDITION®



RIFTCORE™ CCW-ENABLED BACKPACK OWNER'S MANUAL

RIFTCORE™

RFCBLK
Black



Model RFC

SIZE 12 x 8 x 18 in
30.5 x 20.3 x 45.7 cm

CAPACITY 1400 cu in
23 L

WEIGHT 3.9 lb
1.8 kg

FABRICS 500D Hex Ripstop Nylon
1000D Plain Weave Nylon

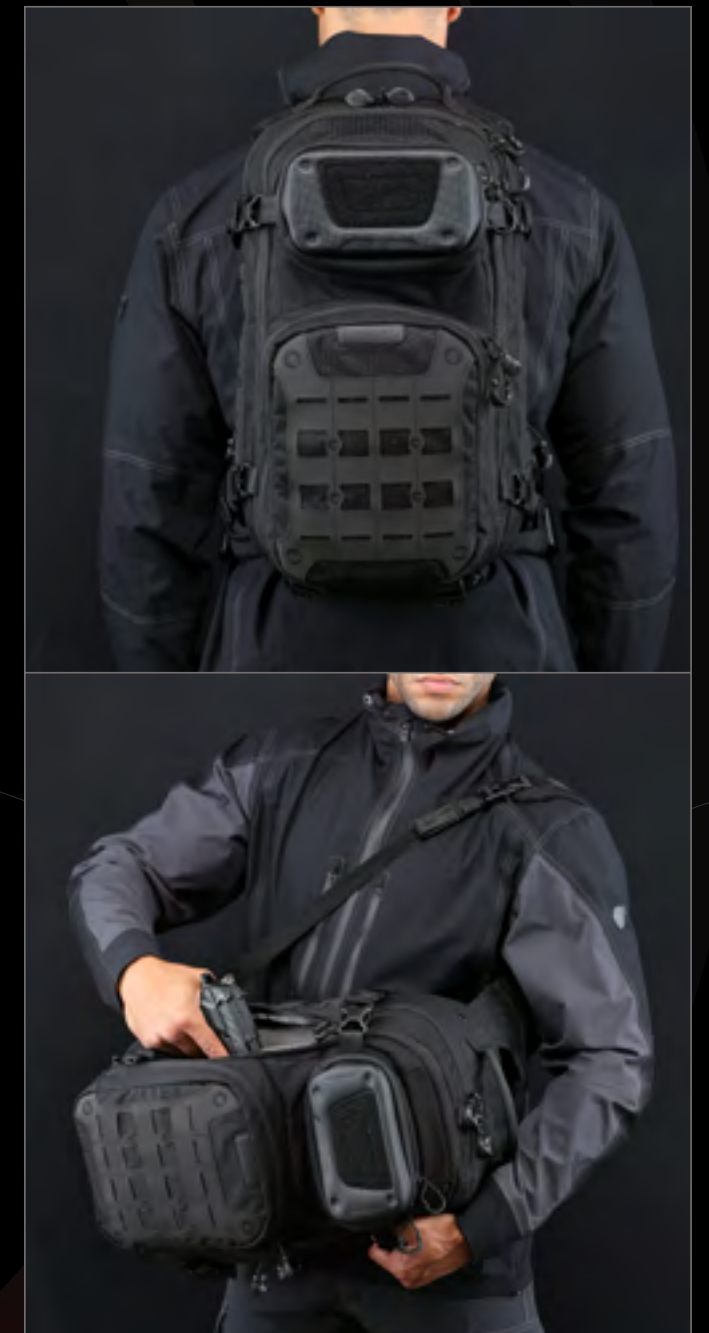


Teflon® is a registered trademark of The Chemours Company FC, LLC, used under license by Maxpedition

RFCTAN
Tan



RFCGRY
Gray



MAXPEDITION

FEATURES

RIFTCORE™



Custom fabricated Shapeshift™ webbing handle

Lockable main compartment

Quadruple side compression

Custom molded fleece-lined semi-rigid pocket

Strap-down area in loop-lined middle compartment

Ample internal organization

Attachment Lattice System - ATLAS™
Cut from 840D Nylon-TPU Composite

Ergonomic quick release yoke-style straps

Dual hydration tube ports

Two-way access to fully loop-lined rear CCW compartment

CCW compartment with Security Lockout Strip

Adjustable sternum strap

Stowable padded waist belt with gear loops

Forward cinching waist belt adjustment

FEATURES - FRONTAL

RIFTCORE™



1
Lockable main compartment



3
Quadruple side compression



5
Strap-down area in loop-lined middle compartment



2
Ergonomic quick release yoke-style straps



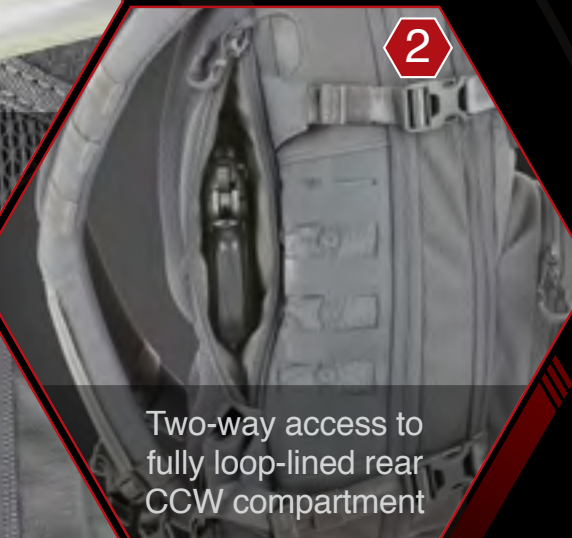
4
Custom molded fleece-lined semi-rigid pocket

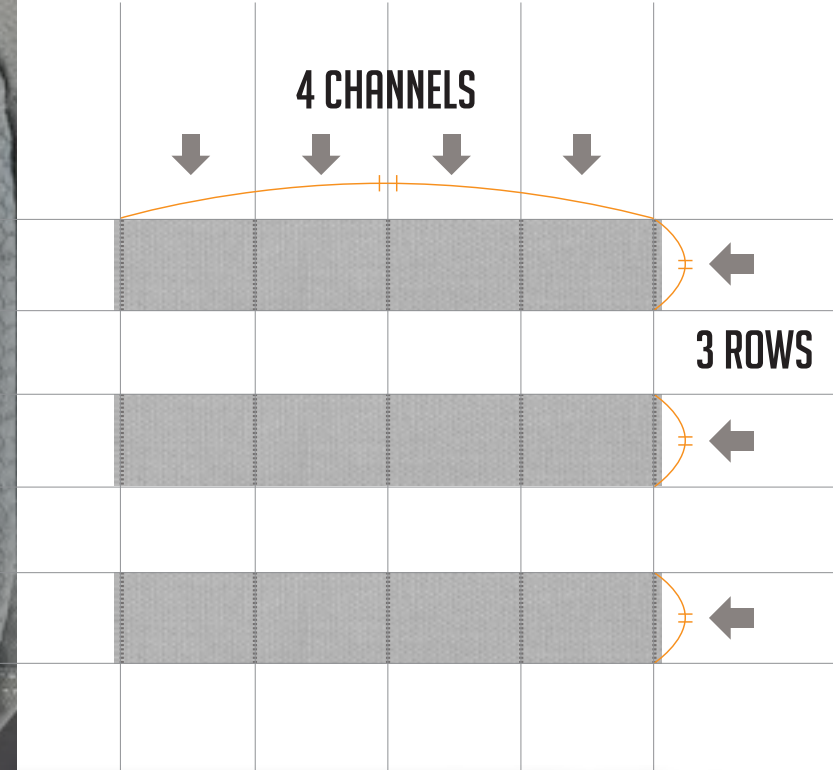
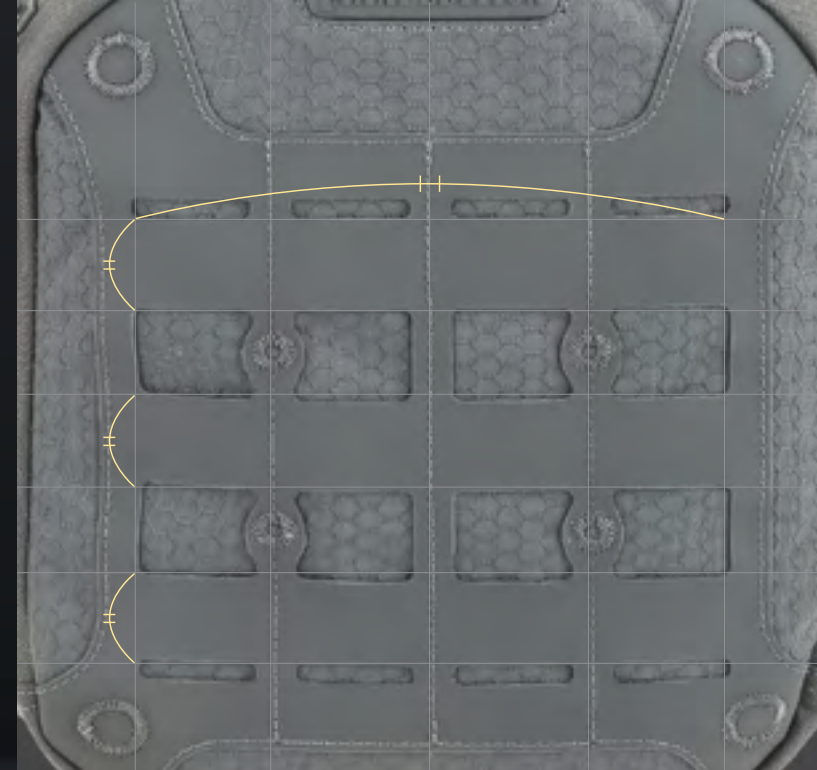


6
Ample internal organization

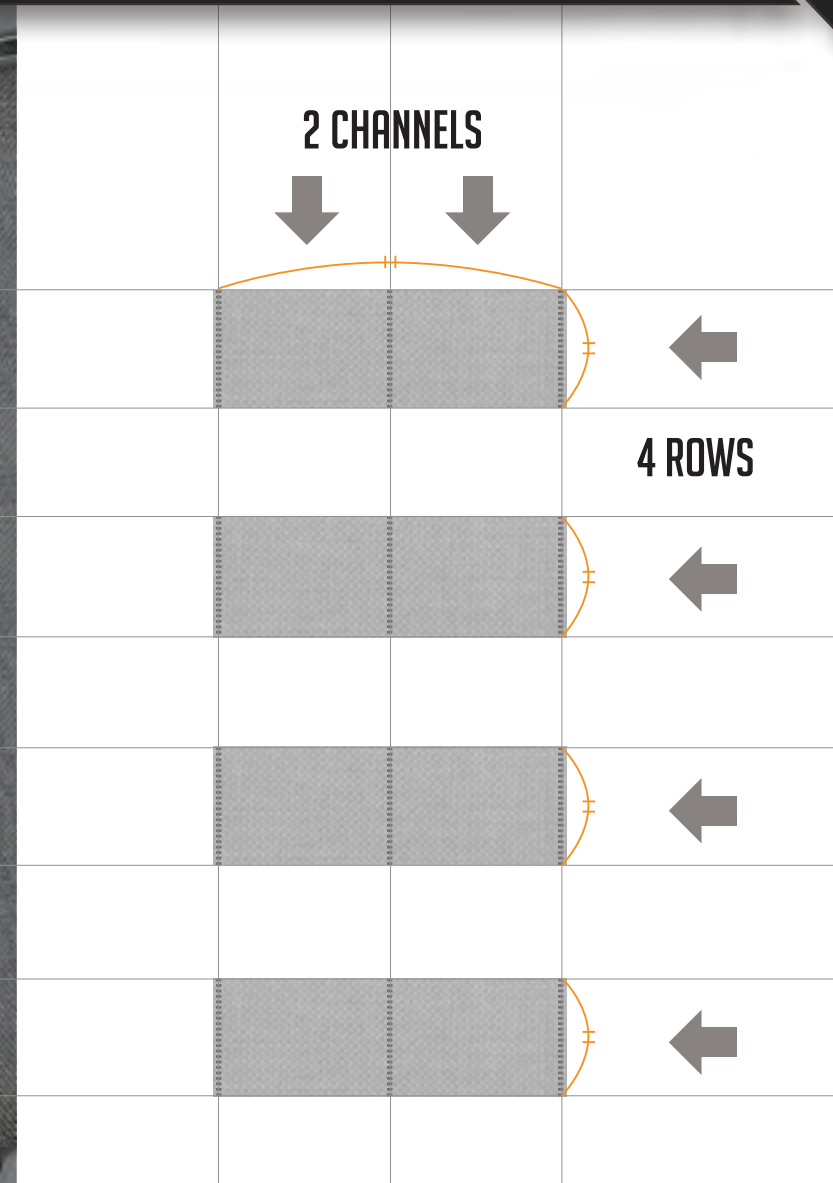
FEATURES - REAR

RIFTCORE™





MOLLE/PALS EQUIVALENT



ATTACHMENT LATTICE SYSTEM - ATLAS™

ATLAS™ panels, which are cut from an ultra-tough 840-Denier Nylon-TPU composite, can be used for easy attachment of MOLLE-compatible pouches. The composite material is resistant to water, weather, heat, cold, UV and abrasion.

TO ATTACH ACCESSORIES USING THE TACTIC® POLYMER JOINING CLIPS:

- 

1 Slide the clip through attachment backing of the pouch until head catches, then insert tail under the first row on the pack/garment.
- 

2 Weave the tail back through the next row on the pouch.
- 

3 Weave the tail through the next row on the pack/garment.
- 

4 Repeat weaving process as needed depending on the length of the clip.
- 

5 Insert the tail under the bridge, making sure both the tab and the tooth have both clicked into place.
- 

6 Maximum strength and security are achieved when the pouch and the pack/garment are fully interwoven.

STRAP-DOWN AREA IN LOOP-LINED MIDDLE COMPARTMENT

The middle compartment, which has a full clamshell opening, comes with multiple loop-lined adjustable straps that can be repositioned to make organizing and locating contents much easier. To reposition the strap, open the hook and loop, slide the strap out, slide the strap into the new position, circle around, and press together to engage the hook and loop closure. The middle compartment is also fully loop-lined for the attachment of CCW or hook & loop accessories. Anchor straps are sewn in standard PALS spacing with 3 rows and 10 channels for modular attachment of MOLLE-compatible pouches.



CCW COMPARTMENT WITH DOUBLE SECURITY CLOSURE

Since the back of the pack has dual side access, a Security Lockout Strip is included. To secure the zipper that is not being used, open that zipper fully. Place the Lockout Strip face down on the loop lining, as close to the zipper track as possible. Using both hands, compress the compartment so the Security Lockout Strip is attached to both sides of the loop lining. Close the zipper and that opening is now fully secure and the compartment can only be accessed from one side. This extra security measure also prevents items from accidentally breaching the zipper and falling out of the pack.

FUNCTIONS - FRONTAL

RIFTCORE™

CUSTOM FABRICATED SHAPESHIFT™ WEBBING HANDLE

This specially developed narrow fabric transitions seamlessly between flat to round cross sections. Flat webbing may be abrasive on hands, so the rounder Shapeshift™ webbing makes the pack more comfortable to hand carry.



LOCKABLE MAIN COMPARTMENT

Lockable YKK#10 zipper sliders allow you to secure the main compartment with a pad lock, keeping your valuables safe and secure. Bring the sliders together until the hoops are overlapping, put the lock through, and secure the lock. Maxpedition® recommends a TSA approved lock when traveling.

CUSTOM MOLDED FLEECE-LINED SEMI-RIGID POCKET

With a semi-rigid exterior and soft interior, this pocket is ideal for storing sunglasses, electronics, and valuables that you do not want to get scratched or broken. A loop-lined field has been added to the exterior to attach morale patches.



POSITIVE GRIP ZIPPER PULLS

Positive grip zipper pulls are designed to fit a finger in order to get a better grip when opening/closing zippers. They also allow you to grab them from any direction and get a positive grip.



FUNCTIONS - FRONTAL

QUADRUPLE SIDE COMPRESSION

Quadruple side compression straps with quick release buckles aid in compressing and stabilizing the load for optimal carry. Another important function of side compression is to take the strain off the zippers, lowering the chance of the zippers bursting. To adjust, hold the buckle, pull the webbing strap, and cinch it to compress. Use the elastic loops to keep excess strap webbing from hanging loose.



BOTTOM TIE-DOWN STRAPS

Tie-down straps allow you to externally attach gear to your pack, such as a small tent, sleeping bag, or jacket. Loosen the straps, then cinch to compress and keep your cargo secure. Use the elastic loops to keep excess strap webbing from hanging loose.



ERGONOMIC QUICK RELEASE YOKE-STYLE STRAPS

Yoke-style straps make for a more ergonomic and comfortable fit. Put on the pack and pull the adjustment straps down at about a 30 degree angle downwards. The hip belt will then rise on your body. As soon as the center of the waist belt is level with your hipbones (or in a comfortable position), stop pulling the adjustment straps and buckle the hip belt.



DUAL HYDRATION TUBE PORTS

An internal sleeve located in the main compartment allows for the easy addition of a hydration reservoir and provides proper weight distribution. Dual hydration ports allow you to add the drinking tube to either the right or left side of the pack, depending on your preference. To attach a hydration reservoir, insert into pocket. Place the provided strap through the reservoir cap loop, going from the bottom up. Weave the strap through the buckle and tighten to secure the reservoir. Put the tube through the preferred port, then place under the webbing on the shoulder strap to secure.

HYDRATION RESERVOIR NOT INCLUDED



STOWABLE PADDED WAIST BELT

The padded waist belt can be stowed away if you prefer not to use it. To stow the waist belt, unhook the belt buckle and fold in each side of the belt. Tuck the belt flaps and webbing into the enclosed area until all components are securely stored.

SHAPESHIFT™ WEBBING GEAR LOOPS

Shapeshift™ gear loops have been added to easily allow you to pull the pack from the back of your body to the front. Simply remove the opposite shoulder strap, grab the handle, and pull forward so the pack is now in front of your body. The gear loops are also the perfect place to hang items like carabiners.



FUNCTIONS - REAR

FORWARD CINCHING WAIST BELT ADJUSTMENT

The padded waist belt fits many different hip/waist sizes. To adjust, buckle around your waist. Fit your fingers or thumbs into the gear loops and pull evenly forwards with both hands until the fit is snug and the pack weight is distributed evenly.



ADJUSTABLE STERNUM STRAP

After the shoulder straps have been adjusted properly, adjust the sternum strap so that it sits comfortably on your chest below the collar bone by sliding the straps up or down. Buckle and cinch to compress. Use the elastic loops to keep excess strap webbing from hanging loose. This will enable you to distribute the pack weight more evenly.



FUNCTIONS - INTERNAL **RIFTCORE™**



FLEECE-LINED SEMI-RIGID POCKET

With a semi-rigid exterior and soft interior, this pocket is ideal for storing sunglasses, electronics, and valuables that you do not want to get scratched or broken. A Gossamer™ mesh pocket is also included for additional organization.

FRONT ADMIN COMPARTMENT

Multiple pockets are available to keep small and medium objects organized and secure. A Keyper™ is supplied in the front pocket, which allows you to easily attach and locate your keys.



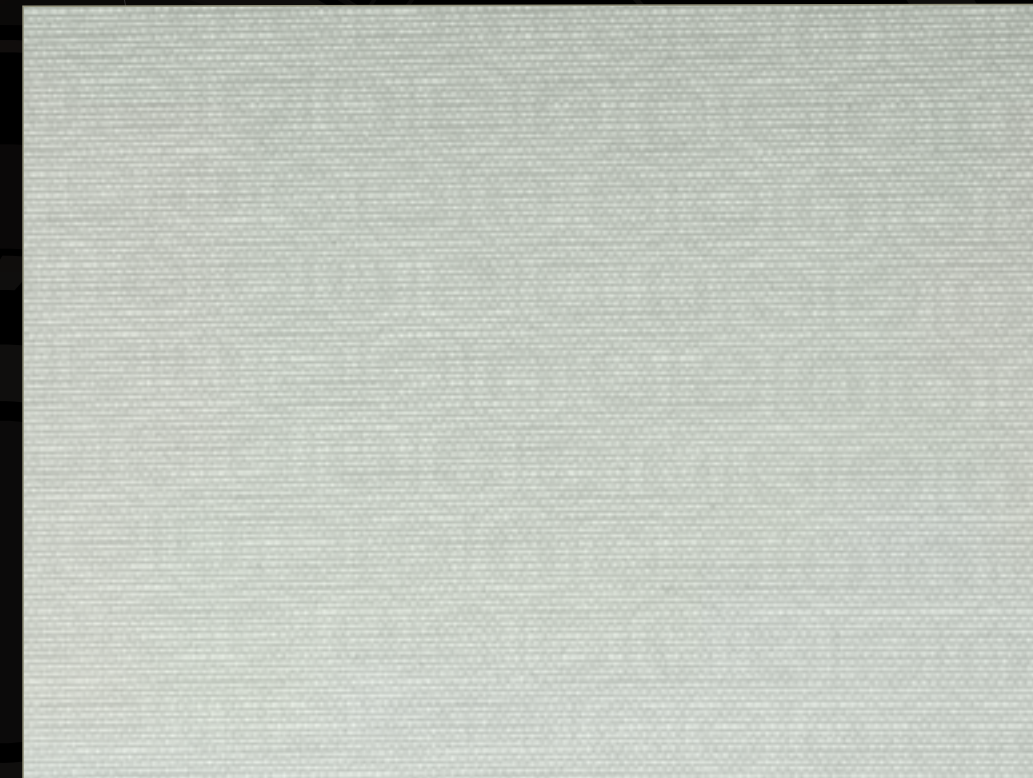
FUNCTIONS - INTERNAL

RIFTCORE™

MAIN COMPARTMENT

A dual opening Gossamer™ mesh pocket, small upper pocket, and elastic straps can be used to keep your gear stored properly and in multiple configurations. A rear sleeve has been added to accommodate a hydration reservoir. High visibility grayscale interior makes finding objects much easier.

HYDRATION RESERVOIR
NOT INCLUDED



SUBTLE HEXAGON PATTERN FABRIC

The inside is lined with a gray 420-Denier nylon fabric. The fabric is heat-embossed with a light tessellated hexagon pattern and can only be seen in certain angles of light. This serves as an anti-counterfeit measure so you know you are getting a genuine Maxpedition® product. To check for the hexagon fabric, open the main compartment of the pack. Slowly move the pack back and forth so that different angles put lighting on the fabric. If the hexagons cannot be seen in the fabric, it is not a genuine Maxpedition® product.

FRAY-RESISTANT GOSSAMER™ MESH

Gossamer™ mesh pockets are a medium gray while other details such as elastic loops and zippers are dark gray, providing visually distinguishable areas for gear storage. The Gossamer mesh is also partially see-through in order to view contents without opening the pockets.

KEYPER™

To keep your keys easily accessible, press on the Keyper™ tab with your finger and attach a key or key ring. To release, press on the Keyper™ tab again and lift to remove your key(s).



CARE TIPS

GENUINE YKK® ZIPPERS AND ZIPPER TRACKS

- To increase the longevity of the YKK® zippers and tracks:
- Zippers should be kept away from directly striking hard objects (e.g. stones etc.).
 - Avoid improper treatment of the painted (coated) zippers, such as direct striking, scratching, or wearing against hard objects.
 - Do not apply strong or high concentrations of bleaching agents.
 - Do not forcibly close a zipper in a bag that has been overfilled.
 - If a slider is caught on thread or cloth, do not free the slider by force. Pull the slider back, removing the trapped thread or cloth. When the slider bites deeply into cloth, do not force it back but work it back gently.



CLEANING INSTRUCTIONS

- After each trip, thoroughly clean your pack.
- Rinse your pack with fresh water if dirt, sweat, salt and stains have worked their way into fabrics, webbing or mesh.
- To clean, simply wipe down with a damp cloth and allow the gear to dry naturally in a well-ventilated area out of direct sunlight.
- Do not machine wash.
- Do not use detergent or bleach on fabrics or webbing.
- Clean the zippers using a mild soap, warm water and a soft brush. Flush water and soap through the buckles. Keeping dirt and debris out of the zippers and buckles will help keep them in proper working condition.



AMPLE INTERNAL ORGANIZATION

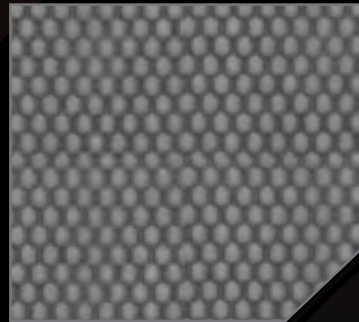
Multiple pockets and elastic straps have been added to the interior compartments for excellent organization. Keep small items together in one of the numerous pockets, and securely hold larger items using the elastic straps. A Keyper™ is supplied in the front pocket, which allows you to easily attach and locate your keys.

COMPONENTS & MATERIALS

RIFTCORE™



YKK® Zippers with Positive Grip Zipper Pulls



Fray-Resistant Gossamer™ Mesh



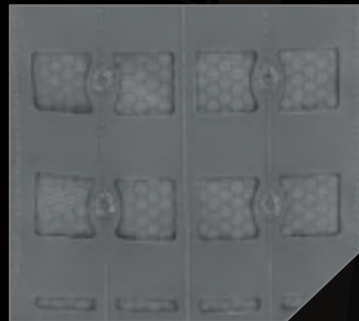
Very Visible Grayscale Interior



Lightweight Anti-Break Duraflex® Xlite® Buckles



Dual Nylon Fabric Construction 500D Hex Ripstop / 1000D Plain Weave



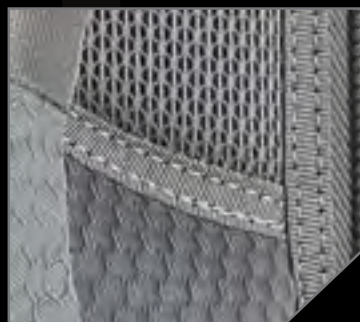
ATtachment Lattice System - ATLAS™ Cut from 840D Nylon-TPU Composite



CCW Compartment with Security Lockout Strip



Skin Friendly Nylon Seatbelt Webbing



Bi-Level High Grade 3D Airmesh Backing



840D Nylon-TPU Composite Tapered Pull Loops



Custom Fabricated Shapeshift™ Webbing Handle



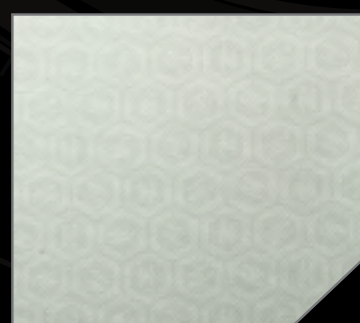
Circular Reinforcement Bartacks



Custom Molded Fleece-Lined Semi-Rigid Pocket



Reinforced Yoke Backpack Straps



Anti-Counterfeit Logo Embossed 420D Nylon Liner



Refined Construction with Elegant Inlays

CONTACT

Phone: 310.768.0098
 Fax: 310.515.5950
 General: Info@Maxpedition.com
 Customer Service: CS@Maxpedition.com
 Government: Gov@Maxpedition.com
 Wholesale: Dealer@Maxpedition.com

CONNECT

Maxpedition.com
 www.Facebook.com/Maxpedition
 www.Twitter.com/Maxpedition
 www.Maxpedition.TV
 www.Instagram.com/Maxpedition
 www.MaxpeditionInAction.com

DISCLAIMER

Maxpedition will not be held responsible for typographical errors, technical inaccuracies, or omissions. It is the responsibility of the customer to determine the suitability of Maxpedition products for use in his/her particular application, to follow all firearms safety rules, and to abide by all applicable laws.

IP

Maxpedition stylized font and footprint logo, Maxpedition word mark, Gearslinger, Versipack, Rollypoly and TacTie are federally and/or internationally registered trademarks of Edgygear Inc. Products depicted in this catalog are protected by U.S. or international patents and/or patents pending.



Copyright © 2016 Edgygear Inc. All Rights Reserved.

MAXPEDITION®



RIFTCORE™

AGR™ *ADVANCED
GEAR RESEARCH*