

ON CAMPUS, ON THE SIDELINE, ON THE ROAD. YOUR COLORS AND PRIDE ON DISPLAY.

PICK YOUR STYLE



See more about this style on page 7.



See more about this style on page 9.



See more about this style on page 29.

PICK YOUR FABRIC



Gore-Tex®

Our flagship outerwear fabric offers the ultimate combination of waterproof, windproof, breathable protection and comfort.



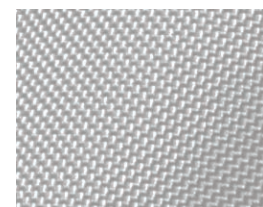
Helium

Ultra light and packable. Waterproof and breathable. 2-way comfort stretch. Critical seams sealed.



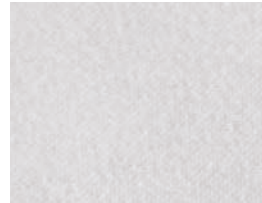
Supplex®

Lightweight and versatile. Offers moderate water resistance and high breathability. Our most popular fabric for team jackets and warm-ups.



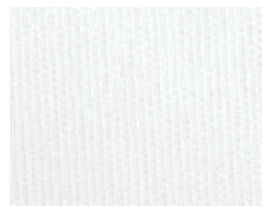
Pro-Tech®

Durable and highly water resistant. Rugged 200 denier nylon with rugged urethane coating.



Soft Shell

Highly water resistant fabric offering comfort and warmth without bulk. 3-layer fabric laminate...tough woven shell, soft brushed liner with waterproof laminate sandwiched in between. 2-way comfort stretch.



Stretchlite™

Soft bonded fleece....soft jersey knit face with brushed knit lining. Perfect for travel suits and warm-ups.



Triumph

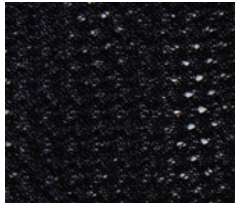
A weightless fabric that offers superior breathability and warmth with a lightweight feel.



Sport Fleece™

Classic spun poly fleece provides warmth and breathability. Select as shell or as warm lining for our classic fit outerwear styles

PICK YOUR LINER

**MICRO-MESH LINING**

Our standard lining offered in 9 colors. 100% polyester. Wicks away sweat, dries quickly.

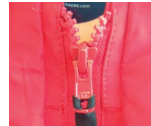
**FLANNEL LINING**

Lightweight brushed tricot knit. Adds additional warmth when combined with supplex and pro-tech shells.

**WEATHERBLOCK™ LINING**

Our warmest lining....3-layer laminated fabric with windblocking, water resistant inner layer. Ideal for adding warmth to all our lightweight jackets.

PICK YOUR OPTIONS

**ZIPPER****GUSSETS****HOOD****PIPING**

ADD YOUR EMBELLISHMENTS

All our embellishments, including embroidery, screen printing and heat seal are done in our own factory, ensuring quality and consistency. Use our decoration guide to select your embellishment placement. Send us your logo assets or select from our library. We make the process quick and easy.



See page 90 for full Embellishment Guide

OUTERWEAR FIT GUIDE

**COMPRESSION FIT**

- second skin fit, hugs the shape and contours of wearer
- use of high spandex content fabrics for built-in ease and non-constrictive movement

**ATHLETIC FIT**

- fitted, skims the contour of the body with an athletic cut
- use of stretch materials and construction fabrics for built-in ease and non-constrictive movement

**STANDARD FIT**

- semi-fitted, athletic shape but built for comfort
- eliminates the bulk of extra fabric while allowing for free range of motion

**RELAXED FIT**

- generous cut designed to accommodate layering
- less structured silhouette for greatest range of motion across sports

**ORBITAL SHOULDER GUSSET™**

- Boathouse proprietary Orbital Shoulder Gusset™ allows for total upper body mobility without restriction
- Sewn directly into the back shoulder seams, the mesh gussets stretch and ventilate with your every movement

**IN STOCK**

Select In-Stock products are available with no minimums, easy re-order and rapid delivery

FABRIC ICON LEGEND

WATERPROOF	HIGHLY BREATHABLE	HEAVY WEIGHT	VERY WARM
HIGHLY WATER RESISTANT	MODERATELY BREATHABLE	MID WEIGHT	MODERATELY WARM
MODERATELY WATER RESISTANT	LESS BREATHABLE	LIGHT WEIGHT	MINIMAL WARMTH

ORBITAL SHOULDER GUSSET™ FOR UNRESTRICTED MOBILITY

Our trademark Orbital Shoulder Gusset™ allows for total upper body mobility without restriction. Mesh panels sewn directly into the shoulders adapt to even the longest reach. Originally designed for training on icy February waters of the Schuylkill River in Philadelphia, the gussets are what Boathouse Sports is all about—athletes making products to help other athletes.



ORBITAL SHOULDER GUSSET™



- Boathouse proprietary Orbital Shoulder Gusset™ allows for total upper body mobility without restriction
- Sewn directly into the back shoulder seams, the mesh gussets stretch and ventilate with your every movement














SUPPLEX®

- Lightweight & breathable
- Perfect choice for warm up and moderate climates
- Soft hand with technical performance

PRO-TECH®

- Water and wind resistant
- Urethane coating provides protection from moisture and a warm thermal barrier

SUPPLEX® & PRO-TECH® FABRIC COLORS

	Black		Navy
	Red		Royal
	Orange		Purple
	Athletic Gold		Cardinal
	Vegas		Maroon
	Kelly		Brown
	Forest		* Victory
	Grey		* Graphite
	White		

* Not available in Pro-Tech

MICRO-MESH LINING

- Breathable and moisture wicking
- Fine mesh construction

MICRO-MESH LINING COLORS

	Black
	Red
	Athletic Gold
	Forest
	Grey
	White
	Navy
	Royal
	Maroon

MEN'S MISSION PULLOVER

Retail Adult \$134.00 | Youth \$113.00

Team Adult **\$67.00** | Youth **\$55.00** Min. Order 6



Style 1650
shown with optional piping

Adult XS-5XL | Youth M-XL

- Orbital Shoulder Gusset™
- Lined in Micro-Mesh
- Open cape for ventilation
- Lined muff pocket
- Drawcord bottom opening with cordlock (Adult only)

Styles

Knit cuffs and wind collar
(knit collar option available at no cost)

1650 - Solid Color Supplex®

1050 - Solid Pro-Tech®

1652 | Y1652 - 2-Color Supplex®

1052 - 2-Color Pro-Tech®

Elastic cuffs and self collar

(wind collar option available at no cost)

1652E | Y1652E - 2-Color Supplex®

1052E - 2-Color Pro-Tech®

Optional Features

- Rollaway Hood: \$6
- Pockets:
 - Zippered welt: \$6 (removes muff pocket)
- Lining:
 - Weatherblock™: \$8
 - Flannel: \$6
- Piping: \$6



WOMEN'S MISSION PULLOVER

Retail \$134.00 | Team **\$67.00** Min. Order 6



Style W1652
shown with optional piping



Women's XS-3XL

- New Women's fit
- Orbital Shoulder Gusset™
- Lined in Micro-Mesh
- Open cape for ventilation
- Lined muff pocket
- Drawcord bottom opening with cordlock

Styles

Knit cuffs and wind collar
(knit collar option available at no cost)

W1650 - Solid Color Supplex®

W1050 - Solid Pro-Tech®

W1652 - 2-Color Supplex®

W1052 - 2-Color Pro-Tech®

Elastic cuffs and self collar

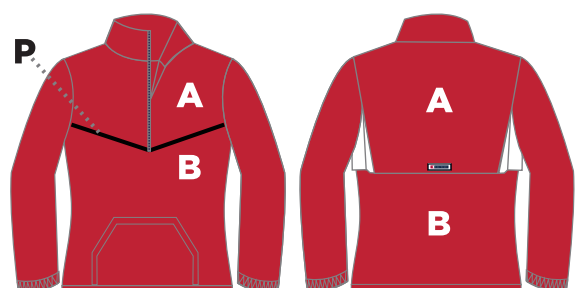
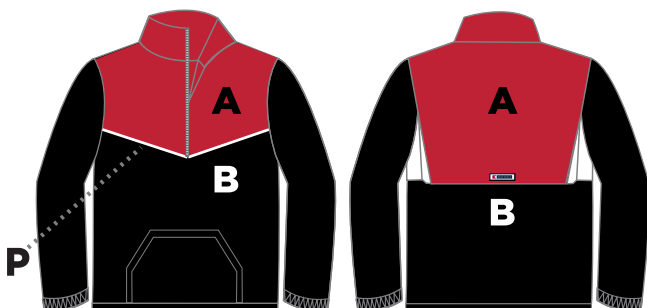
(wind collar option available at no cost)

W1652E - 2-Color Supplex®

W1052E - 2-Color Pro-Tech®

Optional Features

- Rollaway Hood: \$6
- Pockets:
 - Zippered welt: \$6 (removes muff pocket)
- Lining:
 - Weatherblock™: \$8
 - Flannel: \$6
- Piping: \$6



MEN'S VICTORY JACKET

Retail Adult \$148.00 | Youth \$116.00

Team Adult **\$74.00** | Youth **\$56.00** Min. Order 6



Style 2652
shown with
optional piping

Adult XS-5XL | Youth M-XL

- Orbital Shoulder Gusset™
- Lined in Micro-Mesh
- Open cape for ventilation
- Zippered welt pocket
- Also available in solid color combo
- Drawcord bottom opening with cordlock (Adult only)

Styles

Elastic cuffs & self collar
(wind collar option available
at no cost)

2652E - 2-Color Supplex®

2052E - 2-Color Pro-Tech®

Knit cuffs and wind collar standard
(knit collar option available no cost)

2650 - Solid Supplex®

2050 - Solid Pro-Tech®

2652 | Y2652 - 2-Color Supplex®

2052 - 2-Color Pro-Tech®

Optional Features

- Rollaway hood: \$6
- Zippered Welt: \$6
- Lining:
 - Weatherblock™: \$8 (closed back)
 - Flannel: \$6
 - Sport Fleece: \$16
 - Sublimated Micro-Mesh: \$11
- Piping: \$6



WOMEN'S VICTORY JACKET

Retail \$148.00 | Team **\$74.00** Min. Order 6



Style W2652
shown with optional piping

Women's XS-3XL

- New Women's fit
- Orbital Shoulder Gusset™
- Lined in Micro-Mesh
- Open cape for ventilation
- Zippered welt pocket
- Also available in solid color combo
- Drawcord bottom opening with cordlock
- Inside media pocket

Styles

Elastic cuffs and self collar
(wind collar option available
at no cost)

W2652E - 2-Color Supplex®

W2052E - 2-Color Pro-Tech®

Knit cuffs and wind collar standard
(knit collar option available
at no cost)

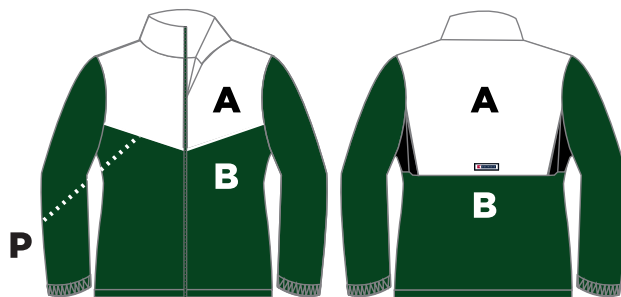
W2650 - Solid Supplex®

W2652 - 2-Color Supplex®

W2052 - 2-Color Pro-Tech®

Optional Features

- Rollaway hood: \$6
- Zippered Welt: \$6
- Lining:
 - Weatherblock™: \$8 (closed back)
 - Flannel: \$6
 - Sport Fleece: \$16
 - Sublimated Micro-Mesh: \$11
- Piping: \$6





2017|18

MEN'S FACET JACKET

Retail \$174.00 | Team **\$87.00** Min. Order 6



Adult XS-5XL

- Lined in Micro-Mesh
- Self collar
- Raglan sleeves
- Drawcord bottom opening with cordlock
- Single welt pockets with zipper
- Elastic cuff closure
- Inside media pocket and headphone channel

Styles

2659 - Supplex®

2059 - Pro-Tech®

Optional Features

- Rollaway hood: \$6
- Sublimated Micro-Mesh: \$11



WOMEN'S FACET JACKET

Retail \$174.00 | Team **\$87.00** Min. Order 6



Women's XS-3XL

- Feminine shaping for a great fit
- Lined in Micro-Mesh
- Self collar
- Raglan sleeves
- Drawcord bottom opening with cordlock
- Single welt pockets with zipper
- Elastic cuff closure
- Inside media pocket and headphone channel

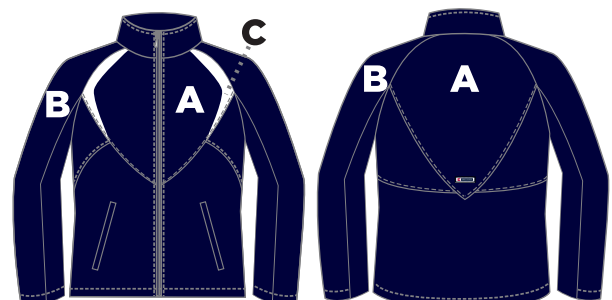
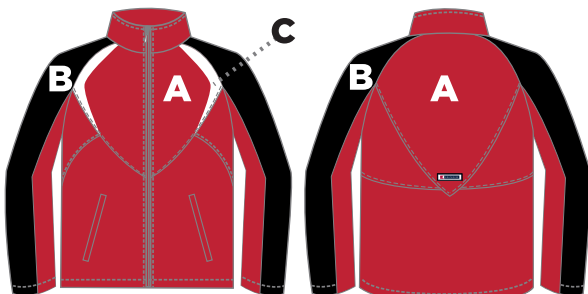
Styles

665 - Supplex®

605 - Pro-Tech®

Optional Features

- Rollaway hood: \$6
- Sublimated Micro-Mesh: \$11



ORIGINAL STEVENSON WEATHERSHIRT

Retail \$132.00 | Team **\$66.00**
Min. Order 6



Adult XS-5XL

- Orbital Shoulder Gusset™
- Upper back lined in Micro-Mesh
- Flannel lined lower back
- Open cape for ventilation
- Extended tuck tail
- Drawcord bottom opening with cordlock
- Side zippered back pocket
- Available in Solid and 2-Color combos

Styles

Knit cuffs and wind collar
(knit collar option available at no cost)

9600 - Solid Color Supplex®

9000 - Solid Pro-Tech®

9602 - 2-Color Supplex®

9002 - 2-Color Pro-Tech®

Velcro® elastic cuffs and self collar

(wind collar option available at no cost)

9602E - 2-Color Supplex®

9002E - 2-Color Pro-Tech®

Optional Features

- Rollaway Hood: \$5
- Pockets: Lined Muff: \$5 (removes standard back pocket)
- Lining: Full Mesh: \$5 Full Weatherblock™ (closed back): \$7.50 Full Flannel: \$5
- Piping: \$5



PRECISION JACKET

Retail \$146.00 | Team **\$73.00**
Min. Order 6



shown with optional piping

Sizes

Adult XS-5XL

- Lined in Micro-Mesh
- Drawcord bottom opening with cordlock
- Self collar, elastic cuffs and welt pockets

Styles

4653 - Supplex®

4053 - Pro-Tech®

Optional Features

- Sport Fleece: \$16
- Piping: \$6
- Zippered Pockets: \$6
- Rollaway hood: \$6
- Weatherblock: \$8
- Lining: Flannel: \$6



DYNASTY JACKET

Retail \$124.00 | Team **\$62.00**
Min. Order 6

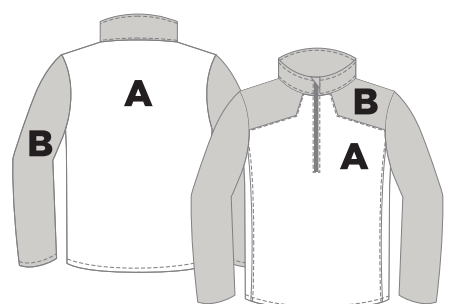
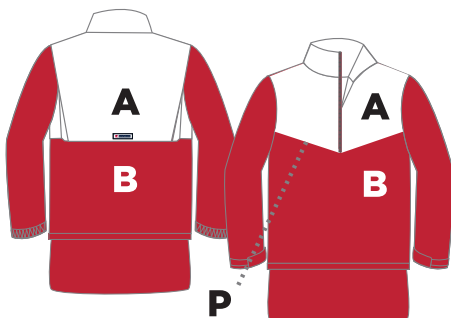


Adult XS-4XL

- Sleek quarter-zip design with zipper garage
- Supplex shell, lined in Micro-Mesh
- Self collar
- Raglan sleeve construction
- Zipped single welt pockets
- Muff pocket

Style

3653 - Supplex®



ALLIANCE PULLOVER

Retail \$104.00 | Team **\$52.00**

Min. Order 6



shown with optional piping

Adult XS-5XL

- All the features of the Mission Pullover with non-gusseted shoulders and closed back
- Lined muff pocket
- Available in Solid and 2-Color combos
- Elastic cuffs and self collar
- Lined in Micro-Mesh
- Drawcord waist

Styles

3652E - Supplex®

3052E - Pro-Tech®

Optional Feature

- Piping: \$6



CLASSIC XW JACKET

Retail \$124.00 | Team **\$62.00**

Min. Order 6



shown with optional piping

Adult XS-5XL

- Pro-Tech® shell fabric for water resistance
- Lined in Weatherblock for warmth
- Includes hanging hood
- Elastic Cuffs
- Available in solid and 2-color combinations

Style

4072 - Pro-Tech®

Optional Feature

- Piping: \$6



CLASSIC JACKET

Retail Adult \$110.00 | Youth \$103.00

Team Adult **\$55.00** |

Youth **\$52.00**

Min. Order 6



Style 4652E
shown with optional piping

Adult XS-5XL | Youth M-XL

- Closed back & non-gusseted shoulders
- Lined in Micro-Mesh
- Welt pockets
- Available in Solid & 2-Color combos
- Elastic cuffs and self collar
- Drawcord waist

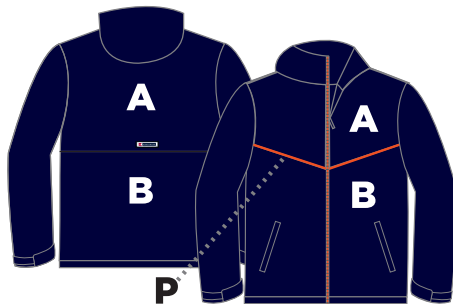
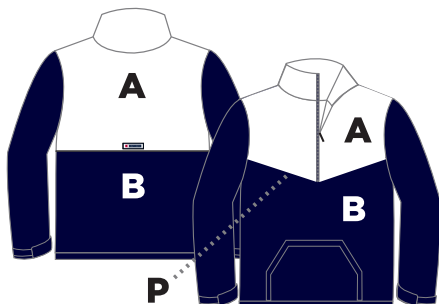
Styles

4652E | **Y4652E** - Supplex®

4052E - Pro-Tech®

Optional Feature

- Piping: \$6



MEN'S & WOMEN'S BLAST PANT

Retail Adult \$104.00 | Youth \$84.00

Team Adult **\$52.00** | Youth **\$42.00** Min. Order 6



Adult XS-5XL | Youth M-XL
Women's XS-3XL

- Full Micro-Mesh lining
- 16" zipper at ankle (13" Youth)
- Side seam pockets

Men's Blast Styles

- 169E**
- Elastic Leg Supplex®
169S | Y169S
- Straight Leg Supplex®
109S
- Straight Leg Pro-Tech®

Women's Tempest Styles

- 163S** - Straight Leg Supplex®
103S - Straight Leg Pro-Tech®

Blast & Tempest Optional Features

- Lining: Unlined: \$0, Flannel: \$5
- Piping or Braid: \$5
- 33" zippered leg opening: \$5

MEN'S & WOMEN'S COLORBLOCK BLAST PANT

Retail \$110.00 | Team **\$55.00** Min. Order 6



Adult XS-5XL | Women's XS-3XL

- Full Micro-Mesh lining
- 16" zipper at ankle
- Side seam pockets
- Colorblock style includes double piping

Men's Colorblock Blast Styles

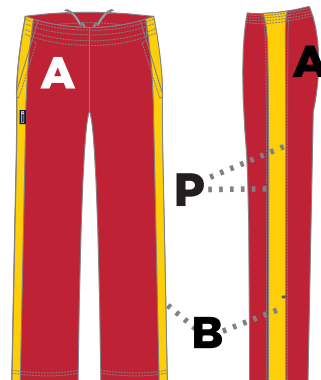
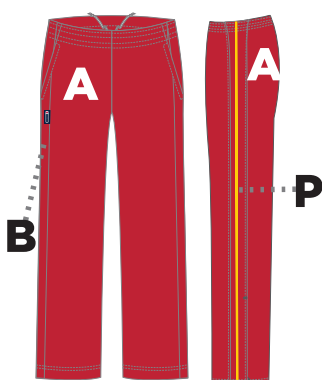
- 169ECB** - Elastic Leg Supplex®
169SCB - Straight Leg Supplex®
109SCB - Straight Leg Pro-Tech®

Women's Colorblock Tempest Styles

- 163SCB** - Straight Leg Supplex®
103SCB - Straight Leg Pro-Tech®

Colorblock Blast & Tempest Optional Features

- Lining: Unlined: \$0, Flannel: \$5
- No piping: \$0
- 33" zippered leg opening: \$5



Available with no minimums.
Easy re-order and rapid delivery.

169S In Stock: Black and Navy



20% OFF PANTS
WITH EACH JACKET PURCHASED

FREESTYLE/RELAY DECK PARKA

Retail \$188.00 | Team **\$94.00**

Min. Order 6



Adult XS-5XL

- Pro-Tech® Shell
- Full Sport Fleece lining
- Hanging hood
- 2-Way zipper
- Oversized lined welt pocket
- Available in Solid & 2-Color combos

Styles

7000 - Solid

7002 - 2-Color

Optional Features

- Lining: Flannel: \$6
- Weatherblock™ lining can be substituted at no charge



LEGACY PARKA

Retail \$158.00 | Team **\$79.00** Min. Order 6

NEW FOR
2018



Style Z682 shown with optional piping

Adult XS-5XL

- Fully lined Weatherblock™
- Relaxed fit does not accommodate pads
- 2-Way zipper
- Rollaway hood
- Welt pocket
- Drawcord waist with cordlock

Styles

Z660 - Solid Supplex®

Z600 - Solid Pro-Tech®

Z682 - 2-Color Supplex®

Z082 - 2-Color Pro-Tech®

Optional Features

- Lining: Sport Fleece: \$15,
- Mesh: \$5, Flannel: \$5
- Piping: \$5

