



BOATHOUSE

ELITE PERFORMANCE OUTERWEAR



CORPORATE CATALOG 2019



BOATHOUSE
SINCE 1976
ELITE PERFORMANCE OUTERWEAR
GUARANTEE

OUR SUPERIOR QUALITY ALLOWS OUR CUSTOM PRODUCTS TO WITHSTAND THE MOST RIGOROUS USE. HOWEVER, IF YOU SHOULD EXPERIENCE ANY PROBLEM WITH THE QUALITY OF OUR WORKMANSHIP OR MATERIALS, WE WILL GLADLY REPAIR OR REPLACE YOUR CUSTOM PRODUCT.

TABLE OF CONTENTS

FABRIC GUIDE	pg. 1
GORE-TEX	pg. 2
SOFT SHELL	pg. 6
HELIUM	pg. 10
SUPPLEX / PROTECH	pg. 15
PERFORMANCE LAYERING	pg. 21
SIZE CHART	pg. 25
ORDERING INFO AND GUIDES	pg. 26+

OUTERWEAR FABRICS GUIDE

SELECT YOUR GARMENT STYLE AND FABRIC



GORE-TEX

Our flagship outerwear fabric offers the ultimate combination of waterproof, windproof, breathable protection and comfort.



SOFT SHELL

Highly water-resistant fabric offering comfort and warmth without bulk. 3 layer fabric laminate...tough woven shell, soft brushed liner with waterproof laminate sandwiched in between. 4-way comfort stretch.



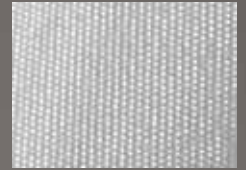
HELIUM

Ultra-light, packable and waterproof. 2-way comfort stretch. Critical seams taped.



STRETCHLITE

Soft bodied fleece. Soft jersey knit face with brushed knit lining. Perfect for travel suits and warm-ups.



SUPPLEX®

Lightweight and versatile. Offers moderate water resistance and high breathability. Our most popular fabric for team jackets and warm-ups.



PRO-TECH®

Durable and highly water resistant. Rugged 200 denier nylon with urethane coating.



SPORT FLEECE™

Classic spun poly fleece provides warmth and breathability. Select as shell or as warm lining for our classic fit outerwear styles.

**FOR MORE FABRIC
& STYLE OFFERINGS,
VISIT US ONLINE AT
BOATHOUSE.COM**



SELECT YOUR LINER



MICRO-MESH

Our standard lining offered in 9 colors. 100% polyester. Wicks away sweat, dries quickly



FLANNEL

Lightweight brushed tricot knit. Adds additional warmth when combined with supplex and pro-tech shells.



WEATHER-BLOCK™

Our warmest lining. 3 layer laminated fabric with windblocking, water resistant inner layer. Ideal for adding warmth to lightweight jackets.

FABRIC ICONS



FIT GUIDE



RELAXED
FIT

Generous cut designed to accommodate layering | Less structured silhouette for greatest range of motion across sports.



STANDARD
FIT

Semi-fitted, athletic shape but built for comfort | Eliminates the bulk of extra fabric while allowing free range of motion.



ATHLETIC
FIT

Fitted, skims the contour of the body with an athletic cut | Use of stretch materials and construction fabrics for built-in ease and non-constrictive movement.



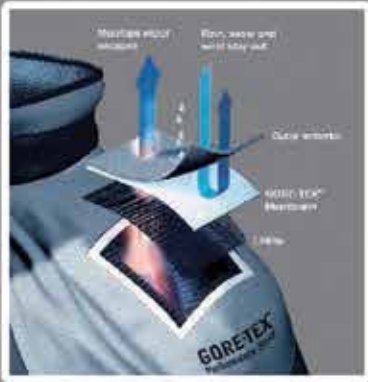
COMPRESSION
FIT

Second skin fit, hugs the shape and contours of the wearer | Use of high spandex content fabrics for built-in ease and non-constrictive movement.

GUARANTEED TO KEEP YOU WARM AND DRY

GORE-TEX®

PRODUCTS



DURABLY WATERPROOF
AND WINDPROOF,
COMBINED WITH
OPTIMIZED
BREATHABILITY



HANDCRAFTED IN PHILADELPHIA USA



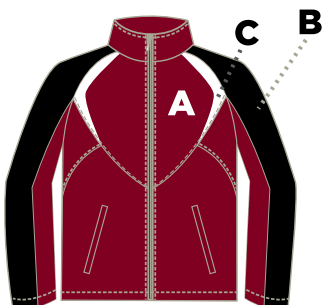
FACET JACKET

MEN: 2859 - XS-5XL

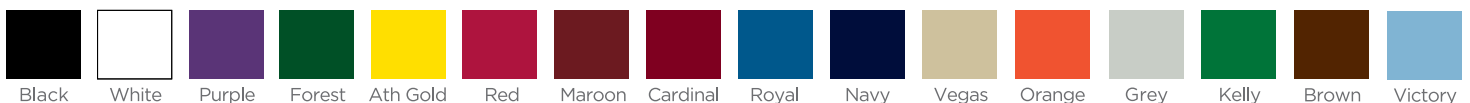
WOMEN: 685 - XS-3XL

- Lined with Micro-Mesh
- Welt zippered out pockets
- Inside media pocket and headphone channel
- Drawcord bottom opening with cordlock
- Velcro® elastic cuff closure
- Line rollaway hood standard
- Facet has exterior storm flap

MSRP - \$204



Choose your A, B, C colors from the options below to create over 4,000 color combinations.





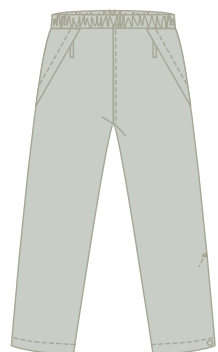
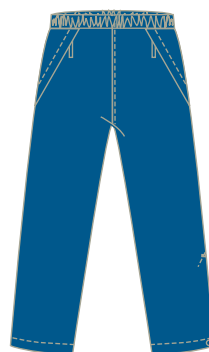
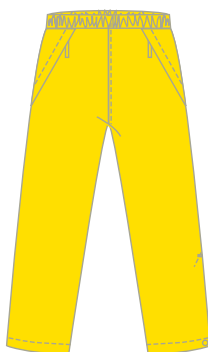
GORE-TEX® PANT

MEN: 185 - XS-5XL

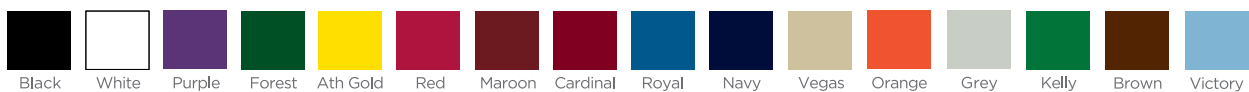
WOMEN: 181 - XS-3XL

- Lined with Micro-Mesh
- Straight leg with 16" zippered vent and Velcro® storm flap
- Elastic waist with drawcord
- Deep side seam welt pockets

MSRP - \$215



Choose your colors from the options below.





Swing Motion Pleat



APPROACH GOLF JACKET

MEN: 2879 - XS-5XL

WOMEN: W2879 - XS-5XL

- Proprietary SwingMotion Gusset allows for superior freedom of movement
- Two front zippered pockets
- Full zip front closure with 2-way zipper
- Micro-Mesh lining
- Adjustable Velcro® closure on cuffs
- Self collar

MSRP - \$204



Choose your A and B colors from the options below to create over 250 color combinations.



ZENITH™ IS A TRUE 3-LAYER SOFT SHELL THAT INCLUDES A STRETCH NYLON OUTER LAYER,
A BRUSHED FLEECE INNER LAYER, AND A WATER-RESISTANT LAMINATE IN BETWEEN

SOFT SHELL



HANDCRAFTED IN PHILADELPHIA USA



ELEVATE JACKET

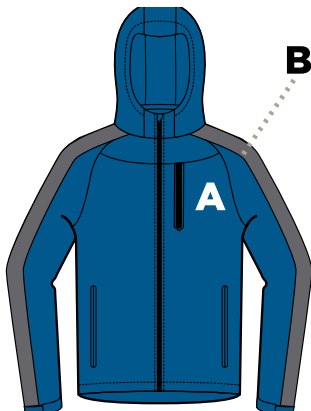
MEN: 2440 - XS-4XL

WOMEN: W2440 - XS-3XL

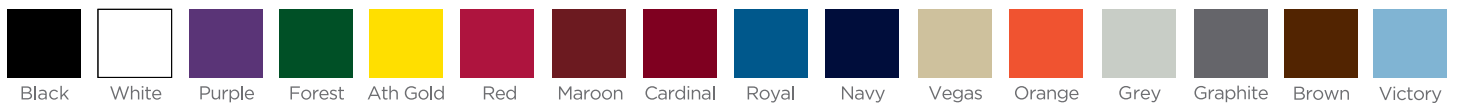
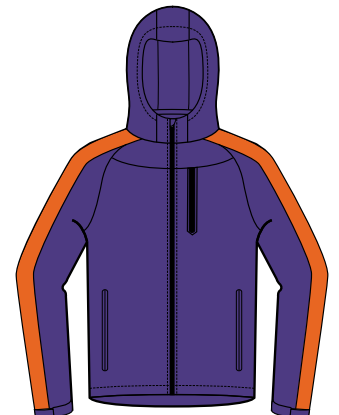
- Modern raglan style and seam detailing
- Two front exposed zipper pockets
- Zippered left chest pocket
- Inside media pocket with headphone loop
- Drawcord bottom with drop tail
- Attached adjustable hood with concealed cordlock
- Velcro® elastic cuff closure
- Sublimated panels available

* Available in solid and 2-color combinations

MSRP - \$101



Choose your A and B colors from the options below to create over 250 color combinations.





EQUINOX JACKET

MEN: 2410 - XS-5XL

WOMEN: 2415 - XS-3XL

- Raglan styling with modern seam detailing
- Two front in-seam concealed zippered pockets
- Zippered left chest pocket
- Zipper garage at top neck

*Available in solid and 2-color combinations

MSRP - \$184



IN STOCK COLORS - QUICK DELIVERY



CHOOSE YOUR COLORS



TOP COLOR COMBINATIONS



B PANEL PATTERNS





EQUINOX VEST

MEN: 1410 - XS-5XL

WOMEN: 1415 - XS-3XL

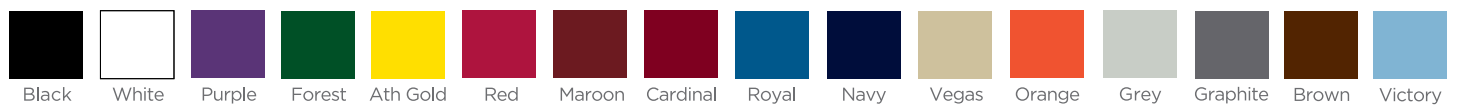
- Modern seam detailing
- Two front in-seam concealed zippered pockets
- Zippered left chest pocket
- Zipper garage at top neck for added comfort
- Inside media pocket with headphone loop
- Drop tail

*Available in solid and 2-color combinations

MSRP - \$72



Choose your A and B colors from the options below to create over 250 color combinations.



ULTRA-LIGHTWEIGHT, PACKABLE AND WATERPROOF

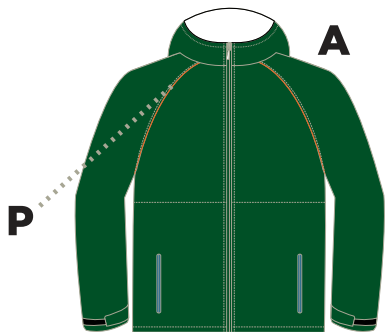
HELIUM



HANDCRAFTED IN PHILADELPHIA USA

TRUE NORTH JACKET

- 2740 - XS-3XL**
- Unlined and ultra lightweight (8oz)
 - Critical seams taped
 - Highly water resistant
 - Drawcord bottom with cordlock
 - Adjustable hood with cordlock
 - Contrast Piping included
 - Velcro® cuff closure
- MSRP - \$128**



Choose your A and P colors from the options below to create over 150 color combinations.

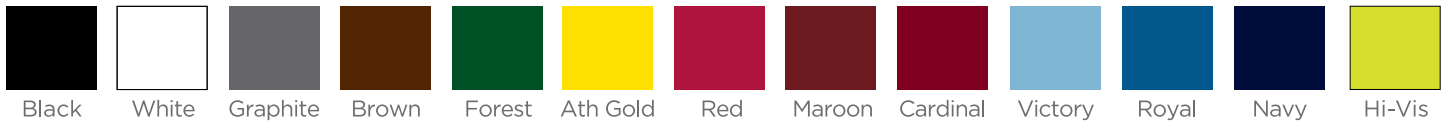


INTREPID JACKET

- 2735 - XS-3XL
 - Helium fabric blocks wind and rain
 - Ideal for cold weather training
 - Unlined, Ultra lightweight and packable
 - Critical seams taped
 - Contrast Piping included
 - 2 front zippered pockets
 - Drop tail design
 - Drawcord at bottom with cordlock
MSRP - \$103



Choose your A and P colors from the options below to create over 150 color combinations.

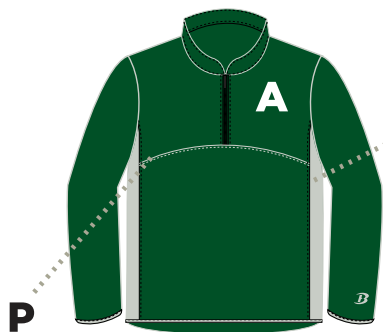


RIO-LITE JACKET

2755 - XS-3XL

- Worn at training shell by USRowing team
- Provides water resistant protection and unmatched freedom of movement with lean minimalist design
- Unlined and packable
- Critical seams taped
- Contrast Piping included
- Cuffs and hem bound with stretch knit for easy on-off
- Concealed vertical zip water bottle pocket in back

MSRP - \$93

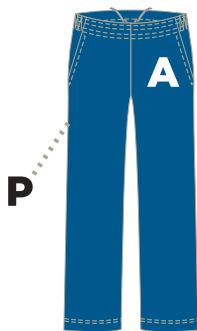
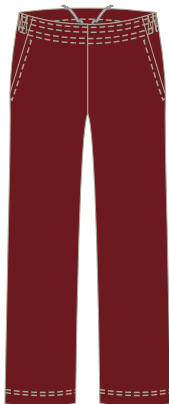


B Choose your A, B and P colors from the options below to create over 2,000 color combinations.



CLOUDBURST PANT

- 279 - XS-3XL**
- Highly water resistant with critical seams taped
 - Elastic waist with drawcord
 - Unlined and packable
 - Deep side seam welt pockets with zipper closures
 - Straight leg with 14" zippers for easy on-off
 - Includes contrast piping
- MSRP - \$70**



Choose your A and P colors from the options below to create over 150 color combinations.



Black

White

Graphite

Brown

Forest

Ath Gold

Red

Maroon

Cardinal

Victory

Royal

Navy

Hi-Vis

SUPPLEX & PROTECH



PRECISION JACKET

4653 - XS-5XL

- Lined in Micro-Mesh
- Drawcord bottom opening with cordblock
- Self collar, elastic cuffs and welt pockets
- Optional Piping for \$6

MSRP - \$80



Choose your A, B and P colors from the options below to create over 4,000 color combinations.

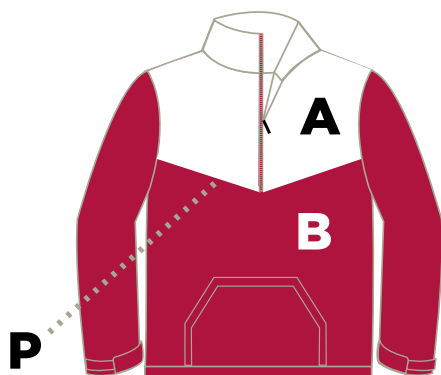


ALLIANCE PULLOVER

3652E - XS-5XL

- Lined muff pocket
- Available in Solid and 2-Color combos
- Elastic cuffs and self collar
- Lined in Micro-Mesh
- Drawcord waist
- Optional Piping for \$6

MSRP - \$55



Choose your A and P colors from the options below to create over 2,500 color combinations.

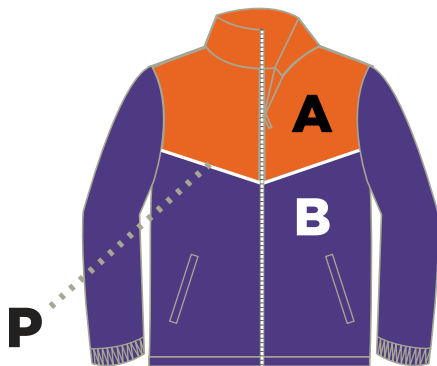


CLASSIC JACKET

4652E - XS-5XL

- Closed back & non-gusseted shoulders
- Lined in Micro-Mesh
- Welt pockets
- Available in Solid & 2-Color combos
- Elastic cuffs and self collar
- Drawcord waist
- Optional Piping for \$6

MSRP - \$55



Choose your A, B and P colors from the options below to create over 2,500 color combinations.



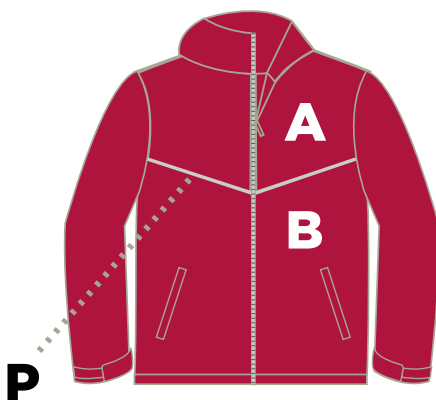
CLASSIC XW

4072 - XS-5XL

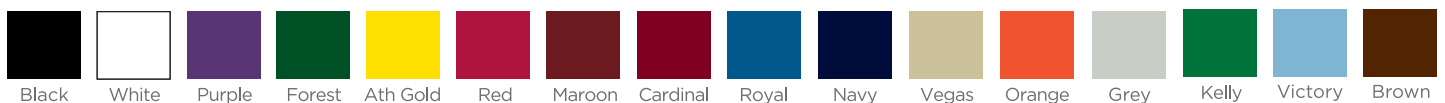
- Pro-Tech shell fabric for water resistance
- Lined in Weatherblock for warmth
- Includes hanging hood
- Elastic cuffs
- Optional Piping for \$6

* Available in solid and 2-color combinations
 * This jacket is made of Pro-Tech not Supplex

MSRP - \$67



Choose your A, B and P colors from the options below to create over 2,500 color combinations.



PERFORMANCE LAYERING



HANDCRAFTED IN PHILADELPHIA USA

SHORT SLEEVE PERFORMANCE SHIRTS

MEN: BLM919 - Air-Mesh XS-5XL

WOMEN: BLW919 - Air-Mesh XS-3XL

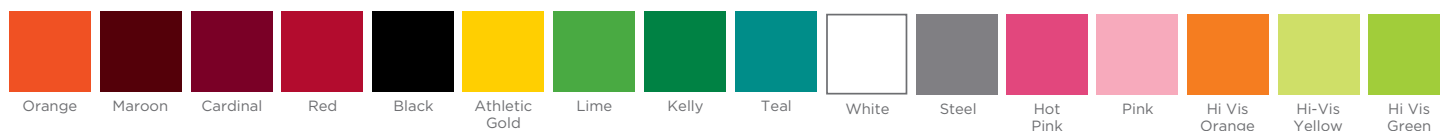
- Men's have crew collar
- Great for competition or training
- Women's cut has v-neck styling
- Fully sublimated

MSRP - \$62



IF YOU CAN IMAGINE IT, WE CAN BUILD IT.

Below are a few options.



CHANGE-UP JERSEY

SBM043 - XS-5XL

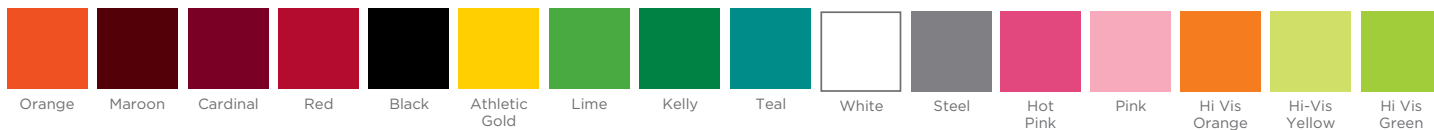
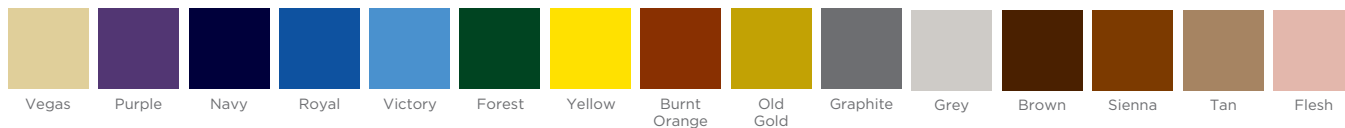
- Henley collar styled tee
- 100% performance polyester
- 2-button placket with forward shoulder seams
- Fully sublimated

MSRP - \$70



IF YOU CAN IMAGINE IT, WE CAN BUILD IT.

Below are a few options.



LONG SLEEVE PERFORMANCE SHIRTS

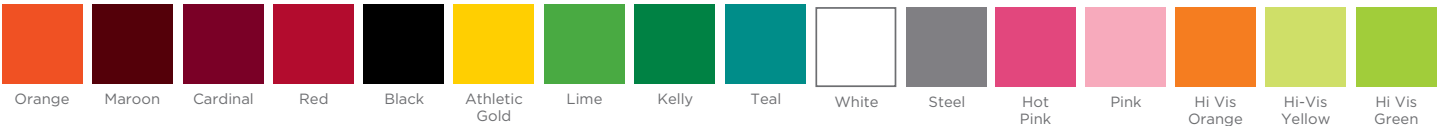
MEN: BLM911 - XS-4XL
WOMEN: BLW911 - XS-3XL

- Loose fitting top great for practice
- Men's have crew collar
- Women's cut has v-neck styling
- Fully sublimated

MSRP - \$76



IF YOU CAN IMAGINE IT, WE CAN BUILD IT.
 Below are a few options.



SIZE CHART

BOATHOUSE BUILT GEAR SIZE CHART

Contact your Sales or Customer Service Representative for sizing information on all Boathouse Marketplace styles.

UNISEX	X-Small	Small	Medium	Large	X-Large	2XL	3XL	4XL
Height	5'5" - 5'7"	5'7 - 5'9"	5'9" - 5'11"	5'11" - 6'1"	6'1" - 6'3"	6'3" - 6'5"	6'5" - 6'7"	6'7" - 6'9"
Weight	115 - 130	130 - 160	160 - 185	185 - 210	210 - 240	240 - 275	275 - 310	310
Chest	32" - 35"	35" - 38"	38" - 41"	41" - 44"	44" - 47"	47" - 50"	50" - 53"	53" - 56"
Sleeve	30"	31"	33"	35"	37"	38"	39"	39"
Waist	26" - 28 1/2"	28 1/2" - 31"	31" - 33 1/2"	33 1/2" - 36"	36" - 38 1/2"	38 1/2" - 41"	41" - 43 1/2"	43 1/2" - 46"
Hip	32" - 35"	35" - 38"	38" - 41"	41" - 44"	44" - 47"	47" - 50"	50" - 53"	53" - 56"
Inseam (Regular)	28"	30"	31"	32"	33"	34"	34 1/2"	34 1/2"
Inseam (Tall)	32"	34"	35"	36"	37"	38"	38 1/2"	38 1/2"

WOMEN/GIRLS	Girls X-Small	Girls Medium	Girls Large	X-Small	Small	Medium	Large	X-Large	2XL	3XL
Dress Size	4 - 6X	8 - 10	12 - 14	2	4 - 6	8 - 10	12 - 14	16 - 18	20	22
Height	4'2" - 4'4"	4'6" - 4'11"	4'11" - 5'3"	5'	5'2"	5'6"	5'10"	6'0"	6'3"	6'4"
Weight	76 - 95	96 - 105	105 - 116	90 - 104	105 - 129	130 - 154	155 - 179	180 - 194	195	210
Chest	27 3/4"	30 1/4"	30" - 32"	31" - 33"	33" - 35"	35" - 37"	37" - 39"	39" - 42"	42" - 44"	44" - 46"
Sleeve	27"	28"	29"	30"	30"	31"	32"	33"	35"	37"
Waist	21" - 23"	23" - 24"	25"	23" - 25"	25" - 27"	27" - 29"	29" - 32"	32" - 34"	34" - 37"	38" - 39"
Hip	29"	31"	32"	32" - 34"	35" - 36"	37" - 39"	40" - 42"	41" - 44"	45" - 47"	48" - 50"
Inseam (Reg)	24"	16"	28"	28"	29"	30"	31"	32"	33"	34"
Inseam (Tall)	—	—	—	31"	32"	33"	34"	35"	36"	37"

*Call for 5XL sizing

YOUTH/BOYS	Medium	Large	X-Large
Height	4'6" - 4'11"	5' - 5'4"	5'4" - 5'8"
Weight	76 - 95	96 - 115	116 - 135
Chest	28" - 29"	30" - 32 1/2"	32 1/2" - 35"
Sleeve	27"	28"	29"
Waist	24 1/2" - 25 1/2"	25 3/4" - 27 1/4"	27 1/4" - 28"
Inseam	24"	26"	28"

HOW TO MEASURE

A: Chest/Bust

Measure under your arms, around the fullest part of your chest.

B: Waist

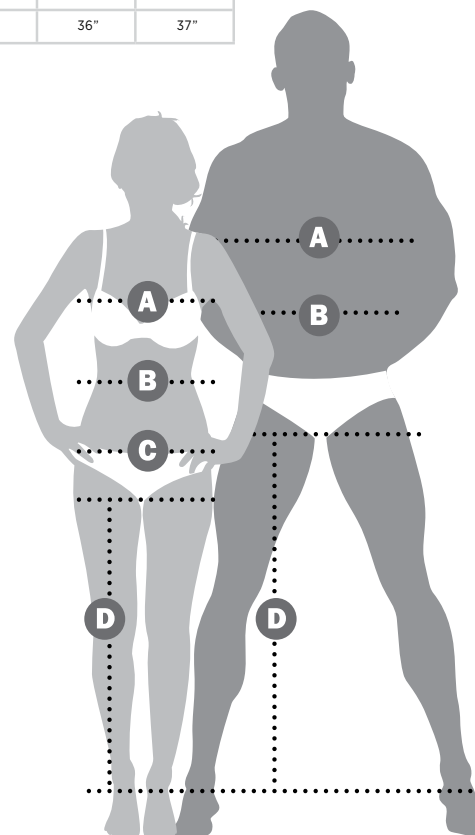
Measure around your natural waistline, keeping tape a bit loose.

C: Hip (Women only)

Measure around the fullest part of your body at the top of your legs.

D: Inseam

Using pants that fit well, measure from the crotch seam to the bottom of the leg.



Our expertise in graphic design and embellishment sets Boathouse apart from the rest. Boathouse custom builds and decorates your gear creating a unique, truly custom product. We offer several decoration methods and will work with you to find the best solution for your style. Not all options and placements are available for every style. Please work with your Boathouse representative for the decoration types and locations approved for your style.

26

SUBLIMATION GUIDE

YOUR IMAGINATION....SUBLIMATED

Creating your sublimated gear is a collaborative process between Boathouse and you. Your active participation in the process is vital for a successful outcome.

Our graphic artists will create a digital illustration of your sublimated style for your review and approval. We allow up to two reworks or revisions per order. Manufacturing will not begin until we have your written approval. Delays in approval could result in delays of your gear delivery.

If you provide art for logos or other design elements for your gear, it must be in Adobe Illustrator (.ai) or (.eps) format in order to avoid custom logo design fees. All copyright logos must be provided in this format.

Using our stock sublimation tools is the quickest, easiest and most economical way to create your gear:

- Stock Sub Designs are found next to each style in our catalog. Additional designs may also be available. Your Boathouse Sales and Customer Service Staff can give you complete information for your particular styles.
- Jump Start Sublimation Playground® patterns can be found on page 41. This is a great way to add a semi-custom look to your gear with no additional art creation charges
- Our stock sublimation colors can also be found on page 41. We can usually match custom colors for an additional cost. However, some custom colors like metallics cannot be sublimated. If we cannot match your custom color, we will advise the best alternative.
- Stock Symbols, Layouts and Colors can be found on pages 104.

If you have the time and the budget, our Design Studio can create a unique and Completely Custom design for you. See below for more details.

BOATHOUSE CUSTOM DESIGN STUDIO

Boathouse specializes in custom sublimation and our design studio is ready to bring your imagination into reality.

We can create custom colors, logos and sublimation designs for your team.

A Boathouse graphic artist will be assigned to your project and will work with you directly through the design process. Our fees includes one (1) revision. Please allow 10 days for any custom artwork creation. Also allow extra time for art approval and manufacturing for all Completely Custom orders. Manufacturing of your custom order cannot begin until we have your written approval.

Custom Design Menu

- Stock and Playground design set up fee: \$39
- Custom Sublimation designs: \$149 per design
- Design fees include one (1) revision.

Additional Sublimation Charges

- Panel Sublimation: \$7.00
- Micro Mesh Sublimation: \$10.00
- Individual Sublimated Names on Uniforms: \$2.00 per name (Solid Stock Fonts Only)

SUBLIMATED GARMENT CARE

Sublimated designs will not crack, peel or fade over time. Some pilling can occur over time with repeated wear. Following the washing instructions is crucial to the long life of your sublimated garment.

- Turn inside out
- Machine wash cold water, gentle cycle
- No chlorine bleach
- No fabric softeners
- Hang to dry
- Do not iron
- Do not dry clean
- Do not store damp
- Do not wash with items containing Velcro®, zippers or other rough surfaces.

JACKET OPTIONS

	Black	White	Grey	Brown	Forest	Kelly	Vegas	Athletic Gold	Orange	Red	Maroon	Cardinal	Purple	Victory	Royal	Navy	Silver	Brass	Camouflage	Hot Pink
Orbital Gussets Mesh																				
GORE-TEX®, Supplex®, ProTech® Zippers																				
Soft Shell, Stretchlite™, Zippers																				
Custom Bag Zippers																				
Snaps																				

CUSTOM BAGS: CANVAS & STRAPS










Canvas																				
Straps																				

BRAID, PIPING, COLLARS, CUFFS & WAIST

KNITTRIM #102

BLK/GLD	BLK/VGS	BLK/RED	NVY/GLD	NVY/VGS	NVY/WHT	FOR/WHT	FOR/ORG	KEL/WHT	CAR/WHT	CAR/GLD	CAR/VGS	RED/WHT	MAR/WHT	MAR/GRY	BRN/WHT	PUR/WHT	ROY/WHT

KNITTRIM #102P

														
BLK/WHT/GLD	BLK/WHT/RED	BLK/WHT/CAR	tWHT/MAR	BLK/WHT/ORG	ORG/WHT/BLK	ORG/WHT/NVY	NVY/WHT/ORG	NVY/WHT/GRY	NVY/WHT/GLD	NVY/WHT/VIC	CAR/WHT/NVY	NVY/WHT/CAR	KEL/WHT/NVY	BRN/WHT/RED
														
RED/WHT/NVY	RED/WHT/GRY	RED/WHT/GLD	ROY/WHT/GLD	ROY/WHT/GRY	FOR/WHT/BLK	FOR/WHT/GRY	FOR/WHT/GLD	PUR/WHT/GLD	MAR/WHT/GLD	BRN/WHT/GLD	BRN/WHT/VIC			

KNITTRIM #109

BLK/PUR	BLK/ORG	BLK/CAR	BLK/FOR	BLK/RED	BLK/WHT	RED/BLK	ROY/BLK	ROY/RED	NVY/VGS	NVY/RED	CAR/GRY	CAR/GLD

PANT BRAID #160B

BLACK	GREY	BROWN	FOREST	KELLY	VEGAS	ATHLETIC GOLD	ORANGE	RED	MAROON	CARDINAL	PURPLE	VICTORY	ROYAL	NAVY

PIPING, SOLID KNIT TRIM #1170 & SOLID BRAID

BLACK	WHITE	GREY	BROWN	FOREST	KELLY	VEGAS	ATHLETIC GOLD	ORANGE	RED	MAROON	CARDINAL	PURPLE	VICTORY	ROYAL	NAVY	REFLECTIVE (PIPING ONLY)	HI-VIS

Some trim items may be available in additional colors. Minimum Order 60 pieces. Call for information.

NOTE: Our fabrics are dyed to consistent color specifications. Different dyeing processes for trims and fabrics may result in slight shading variations. For color verification, please call. We're happy to send you samples.

ORDER DETAILS

HOW TO ORDER

Call us toll-free at 800.875.1883 and we will be happy to answer any questions regarding sizing, etc. Visit us on-line at www.boathouse.com

CONTACTING CUSTOMER SERVICE

Contact customer service by calling 800.875.1883. Order inquiries may be made by phone, Monday through Friday EST: 8:30 am to 5:00 pm.

ORDER MINIMUMS

Minimums vary by product and are noted in the catalog next to the pricing information for each style. Orders that reach and/or exceed minimum will be charged team price. Under minimum orders will be charged retail price. Please note, most of our training gear styles are not available under minimum.

SIZE SURCHARGES

For sizes 3XL-5XL add 15% to the list price of the complete garment (including logo application.)

TO START YOUR ORDER

We will begin your order upon receipt of the following information:

1. Final style, including fabric, lining, options and color(s).
2. Final quantity and sizes.
3. All artwork, logo design information and names and numbers if desired. If you desire individual names or numbers on your garments you must provide us with a typed list corresponding the appropriate names/number to the garment size. This can be e-mailed to the factory.
4. Payment (full payment, deposit or Purchase Order)
5. An estimated shipping date will be applied to your order after art approval

Important color notes: Garment photos and color charts shown in this catalog may not match the actual fabric color due to variations and inconsistencies in printing inks versus fabric dyes. If you would like to see a sample fabric swatch, please call us. Although sublimation printing is precise, slight color variations sometimes occur.

CHANGING AN ORDER

Our goal is to service all customers as quickly and efficiently as possible. **Therefore, please note that once an order is in production, we cannot make changes to the order. Additions will be handled as a separate order with all applicable surcharges and processed immediately.**

REORDERS

Every Boathouse style and design is kept on record permanently. On most styles we honor reorders with no high minimums or surcharges.

PAYMENT METHODS

We need one of the following before we can process your order:

1. **Prepayment:** You pay the full balance when placing the order. Your order will be shipped immediately upon completion.
2. **Deposit/Prepay:** A 50% deposit will start your order. The balance is due prior to shipping. We will ship your order, balance due, C.O.D. upon request. There will be a \$5.00 C.O.D. charge.
3. **Purchase Order:** We will accept a written institutional purchase order once your credit is approved. Orders are billed net 30 days. Overdue accounts accrue a 1.5% monthly service charge. Shipping is FOB PHILADELPHIA. A hard copy of P.O. must be received at the factory in Philadelphia via mail, e-mail or faxed to 215.425.2068 with order.

Taxes: Many states require that we collect sales tax. If your institution is tax exempt, we must have a copy of your tax exempt status on file to avoid adding tax to your order. Please call customer service or your Team Sales Consultant with questions.

PAYMENT OPTIONS

Check or Money Order (A single check per order, please.) Please make checks payable to BOATHOUSE SPORTS and send directly to:

Boathouse Row Sports, LTD
425 E. Hunting Park Ave
Philadelphia, PA 19124



*Online orders additionally accept Paypal, JCB, and Diners Club

Visa, Mastercard, American Express and Discover
(Card is charged when the order is placed.)

Purchase Order: We will accept a written institutional purchase order with approved credit. Orders are billed net 30 days. Overdue accounts accrue a 1.5% monthly service charge. Shipping is FOB PHILADELPHIA. A hard copy of the purchase order must be received at the factory in Philadelphia via mail, e-mail or faxed to 215.425.2068 prior to shipping.

International Orders must be prepaid before shipment.

SHIPPING

Most orders are shipped via standard Ground Services. Expedited shipping is available at customer request and expense. All orders are FOB (Freight On Board) FACTORY, PHILADELPHIA"

Note: Please inspect all orders upon receipt. You must notify us of any discrepancies within 10 days of receipt. (Please keep shipping boxes until goods are accepted as the carrier may need to inspect damaged boxes.)

SHIPPING COSTS

All outerwear and sweats	\$1.50 per garment
Uniforms and other	\$.75 per garment
(\$10.00 minimum)	

DELIVERY TIME

Most custom orders are completed in 4 weeks or less.

Orders that require new art: We create art based on your specifications then e-mail the art file to you for approval. The faster the art is approved, the faster we can deliver. Delays in the art approval process may delay an order.

Important: Due to the variables inherent in custom manufacturing, all delivery dates quoted are estimates only and cannot be guaranteed.

RETURNS & REPAIRS

All custom made garments or lettered items may not be returned or exchanged. If we make a mistake, we will make it right! But please make sure that your choices are exactly what you want before you place your order.

Should you need to return something to us, please call Customer Service at 800.875.1883 for a return authorization (RA) number. This will speed up the return process. Returned garments must be clean (by law.) Soiled garments will be returned to the customer without repairs being processed.

BOATHOUSE
SINCE 1976
ELITE PERFORMANCE OUTERWEAR
GUARANTEE

OUR SUPERIOR QUALITY ALLOWS OUR CUSTOM PRODUCTS TO WITHSTAND THE MOST RIGOROUS USE. HOWEVER, IF YOU SHOULD EXPERIENCE ANY PROBLEM WITH THE QUALITY OF OUR WORKMANSHIP OR MATERIALS, WE WILL GLADLY REPAIR OR REPLACE YOUR CUSTOM PRODUCT.