



PRODUCT SHEET

Plinth Low
by Norm Architects

Plinth Low

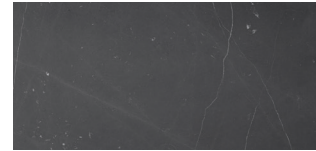
BY NORM ARCHITECTS

Over centuries, the plinth has been a much mused-over object. With this project Danish studio Norm Architects set out to rethink the uses of the plinth and to reveal the natural beauty of marble. The result is a series of podiums with multiple uses in the home, office or showroom. Plinth is available in six sizes. The low rectangular version is ideal as a monumental coffee table. Profiling the beauty of natural materials and uncompromising craftsmanship, each design is precision assembled to reveal the inherent beauty and uniqueness of the material. Each piece of stone and marble will therefore vary and display differently.



PRODUCT OPTIONS

MARBLE OPTIONS



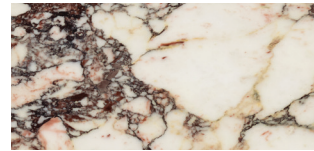
NERO MARQUINA MARBLE



GREY KENDZO MARBLE



CARRARA MARBLE



CALACATTA VIOLA MARBLE



KUNIS BRECCIA STONE

Plinth Low

BY NORM ARCHITECTS

TECHNICAL SPECIFICATIONS

PRODUCT TYPE

Coffee / Side table

COLLI

1

ENVIRONMENT

Indoor

DIMENSIONS

W: 100 cm / 39,4"

D: 60 cm / 23,6"

H: 27 cm / 10,6"

PRODUCTION PROCESS

2 cm thick marble plates are cut and edges are milled at 45-degree angles before all five plates are glued together in mitre joints. Corners are reinforced by reusing excess marble from the production. The bottom plate is made from plywood, where the adjustable glides are fastened.

COLOUR

Nero Marquina marble

Grey Kendzo marble

Carrara marble

Calacatta Viola marble

Kunis Breccia stone

MATERIALS

Nero Marquina marble, Kendzo marble, Carrara marble, Calacatta Viola marble, Kunis Breccia stone and MDF

WEIGHT

82 kg / 180,8 lb

TEST

N / A

CERTIFICATIONS

TSCA title IV compliant

Declare.

PACKAGING TYPE

Wooden crate

PACKAGING MEASUREMENTS (H x W x D)

45 cm x 110,5 cm x 70,5 cm / 17,7" x 43,5" x 27,8"

MATERIALS & MAINTENANCE

Please visit [menuspace.com](https://www.menuspace.com) for materials, care and maintenance instructions.

