



PRODUCT SHEET

Plinth Bridge
by Norm Architects

Plinth Bridge

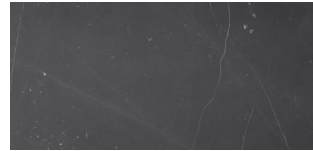
BY NORM ARCHITECTS

With its classic silhouette and modern material appeal, the Plinth Bridge is a versatile addition to any space. Made from high-grade marble or stone in a range of beautiful colours, the sleek table works independently as well as in combination with the Plinth Low and Plinth Grand podiums.



PRODUCT OPTIONS

MARBLE OPTIONS



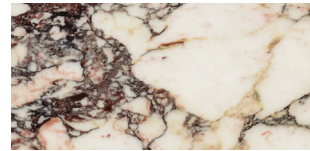
NERO MARQUINA MARBLE



GREY KENDZO MARBLE



CARRARA MARBLE



CALACATTA VIOLA MARBLE



KUNIS BRECCIA STONE

Plinth Bridge

BY NORM ARCHITECTS

TECHNICAL SPECIFICATIONS

PRODUCT TYPE

Lounge table

COLLI

1

ENVIRONMENT

Indoor

DIMENSIONS

W: 100 cm / 39,3"

D: 35 cm / 13,7"

H: 38 cm / 14,9"

PRODUCTION PROCESS

2 cm thick marble plates are cut and edges are milled at 45-degree angles before all five plates are glued together in mitre joints. Corners are reinforced by reusing excess marble from the production. The bottom plate is made from plywood, where the adjustable glides are fastened.

COLOUR

Nero Marquina marble
Grey Kendzo marble
Carrara marble
Calacatta Viola marble
Kunis Breccia stone

MATERIALS

Nero Marquina marble, Kendzo marble, Carrara marble, Calacatta Viola marble, Kunis Breccia stone, PA glides and MDF

WEIGHT

110 kg / 242,5 lb

TEST

N / A

CERTIFICATIONS

TSCA title IV compliant

Declare.

PACKAGING TYPE

Wooden crate

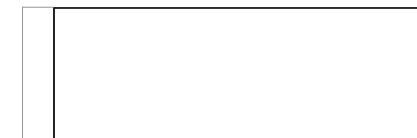
PACKAGING MEASUREMENTS (H x W x D)

59 cm x 45 cm x 110 cm / 23,22" x 17,71" x 43,3"

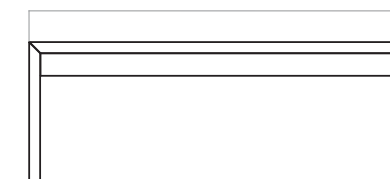
MATERIALS & MAINTENANCE

Please visit [menuspace.com](https://www.menuspace.com) for materials, care and maintenance instructions.

D: 35 cm / 13,7"



W: 100 cm / 39,3"



H: 38 cm / 14,9"

