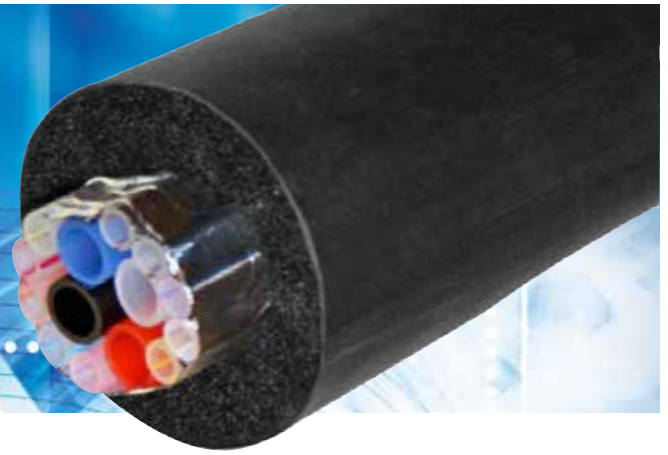


UBC ▶ COATED PYTHON

UBC coated pythons are designed specifically to meet the combined performance requirements of durability, fire performance and flexibility.

- BS476 parts 7 & 6 Class 0 Coating
- Tough and durable protective jacket
- Suitable for demanding environments – excellent physical properties and mechanical strength
- Available in black or white colour finishes
- UV resistant option available



TRUNKLINE SPECS & BTU VALUES ▶

3/8" Trunkline										BTU'S AT DISPENSE TEMPERATURE	
Part No	Description	Tube Specification	Product Lines	Tube Size ID x OD	Glycol Lines	Tube Size ID x OD	Bevex Fire rated Jacket	Trunk-line OD inch	Trunk-line OD mm	BTU/ft @ 36F/2.2C	BTU/ft @ 44F/6.7C
01445C	2+2	PE Ultra - Beer & Soft Drinks	2	3/8" x 1/2"	2	3/8" x 1/2"	YES	2 3/4"	70	7,2	6,3
01446C	2+4	PE Ultra - Beer & Soft Drinks	4	3/8" x 1/2"	2	3/8" x 1/2"	YES	2 7/8"	75	8,5	7,3
01447C	2+6	PE Ultra - Beer & Soft Drinks	6	3/8" x 1/2"	2	3/8" x 1/2"	YES	3 "	80	9,0	7,7
01448C	2+8	PE Ultra - Beer & Soft Drinks	8	3/8" x 1/2"	2	3/8" x 1/2"	YES	3 1/4"	85	9,4	8,0
01550C	2+10	PE Ultra - Beer & Soft Drinks	10	3/8" x 1/2"	2	1/2" x 11/16"	YES	3 1/2"	90	9,7	8,3
01449C	4+10	PE Ultra - Beer & Soft Drinks	10	3/8" x 1/2"	4	3/8" x 1/2"	YES	3 1/2"	90	10,2	8,7
01461C	4+12	PE Ultra - Beer & Soft Drinks	12	3/8" x 1/2"	4	3/8" x 1/2"	YES	3 3/4"	95	11,2	9,5
01462C	4+14	PE Ultra - Beer & Soft Drinks	14	3/8" x 1/2"	4	3/8" x 1/2"	YES	4 "	100	11,6	9,9
01819#	4+16	PE Ultra - Beer & Soft Drinks	16	3/8" x 1/2"	4	3/8" x 1/2"	NO - Taped	4 1/8"	105	12,1	10,3
01812#	6+20	PE Ultra - Beer & Soft Drinks	20	3/8" x 1/2"	6	3/8" x 1/2"	NO - Taped	4 1/2"	115	13,1	11,0

5/16" Trunkline										BTU'S AT DISPENSE TEMPERATURE	
Part No	Description	Tube Specification	Product Lines	Tube Size ID x OD	Glycol Lines	Tube Size ID x OD	Bevex Fire rated Jacket	Trunk-line OD inch	Trunk-line OD mm	BTU/ft @ 36F/2.2C	BTU/ft @ 44F/6.7C
01440C	2+2	PE Ultra - Beer & Soft Drinks	2	5/16" x 7/16"	2	3/8" x 1/2"	YES	2 1/2"	65	6,89	5,9
01441C	2+4	PE Ultra - Beer & Soft Drinks	4	5/16" x 7/16"	2	3/8" x 1/2"	YES	2 3/4"	70	7,92	6,8
01442C	2+6	PE Ultra - Beer & Soft Drinks	6	5/16" x 7/16"	2	3/8" x 1/2"	YES	2 7/8"	75	8,56	7,3
01443C	2+8	PE Ultra - Beer & Soft Drinks	8	5/16" x 7/16"	2	3/8" x 1/2"	YES	3 "	78	9,08	7,7
01495C	2+10	PE Ultra - Beer & Soft Drinks	10	5/16" x 7/16"	2	1/2" x 11/16"	YES	3 "	80	9,38	8,0
01444C	4+10	PE Ultra - Beer & Soft Drinks	10	5/16" x 7/16"	4	3/8" x 1/2"	YES	3 "	80	9,72	8,3
01489C	4+12	PE Ultra - Beer & Soft Drinks	12	5/16" x 7/16"	4	3/8" x 1/2"	YES	3 1/4"	85	10,20	8,7
01490C	4+14	PE Ultra - Beer & Soft Drinks	14	5/16" x 7/16"	4	3/8" x 1/2"	YES	3 1/2"	90	11,19	9,6
01820#	4+16	PE Ultra - Beer & Soft Drinks	16	5/16" x 7/16"	4	3/8" x 1/2"	NO - Taped	3 3/4"	95	11,67	10,0
01811#	6+20	PE Ultra - Beer & Soft Drinks	20	5/16" x 7/16"	6	3/8" x 1/2"	NO - Taped	4 "	100	12,66	10,8

1/4" Trunkline										BTU'S AT DISPENSE TEMPERATURE	
Part No	Description	Tube Specification	Product Lines	Tube Size ID x OD	Glycol Lines	Tube Size ID x OD	Bevex Fire rated Jacket	Trunk-line OD inch	Trunk-line OD mm	BTU/ft @ 36F/2.2C	BTU/ft @ 44F/6.7C
01435C	2+2	PE Ultra - Beer & Soft Drinks	2	0.265" x 3/8"	2	3/8" x 1/2"	YES	2 3/8"	60	6,3	5,4
01436C	2+4	PE Ultra - Beer & Soft Drinks	4	0.265" x 3/8"	2	3/8" x 1/2"	YES	2 1/2"	65	7,4	6,3
01437C	2+6	PE Ultra - Beer & Soft Drinks	6	0.265" x 3/8"	2	3/8" x 1/2"	YES	2 3/4"	70	7,9	6,7
01438C	2+8	PE Ultra - Beer & Soft Drinks	8	0.265" x 3/8"	2	3/8" x 1/2"	YES	2 7/8"	75	8,5	7,3
01439C	4+10	PE Ultra - Beer & Soft Drinks	10	0.265" x 3/8"	4	3/8" x 1/2"	YES	3 "	80	9,0	7,7
01491C	4+12	PE Ultra - Beer & Soft Drinks	12	0.265" x 3/8"	4	3/8" x 1/2"	YES	3 1/4"	85	9,7	8,3
01492C	4+14	PE Ultra - Beer & Soft Drinks	14	0.265" x 3/8"	4	3/8" x 1/2"	YES	3 1/4"	85	10,2	8,7