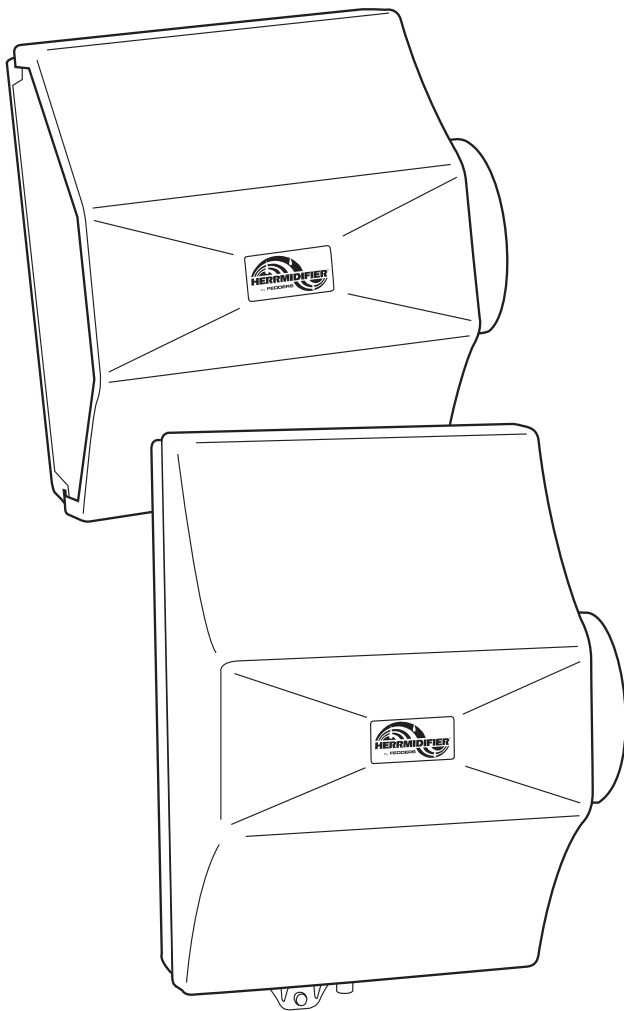


# G200/G300

## Bypass Flow-Thru Humidifiers



### PERFORMANCE:

Save on energy costs and improve comfort. Increasing a home's relative humidity makes it feel more comfortable at 68°F / 20°C than it does at 73°F / 23°C at a low relative humidity level. Lower thermostat settings deliver substantial savings on monthly energy bills.

High capacity output: G200 – 14.4 gallons per day at 120° F.  
G300 – 18.0 gallons per day at 120° F

### FEATURES:

Adjustable, precision duct-mounted humidistats allow the units to be set for optimum relative humidity

Convenient orientation allows right or left-side panel for easy installation and easy access in the future

Single screw secures cover

2" evaporator pad expands the evaporative area for water supply and increases performance

Cleanable/replaceable internal water filter protects solenoid

Self-piercing saddle valve and a 24V brass solenoid valve makes installation easy

G200 mounts on 10" duct, G300 mounts on 14½" duct

Wide 1½" collar for ease of installation

### HOW HERRMIDIFIER HUMIDIFIERS WORK:

Evaporative humidifier is installed onto the supply duct, where warm, dry air is forced across a moistened evaporator pad (wetted through the home's water supply), creating a superfine mist that is released into the indoor air. The adjustable, precision-made humidistat allows the user to choose the optimum level of relative humidity for indoor comfort.

### WARRANTY:

2-year limited warranty

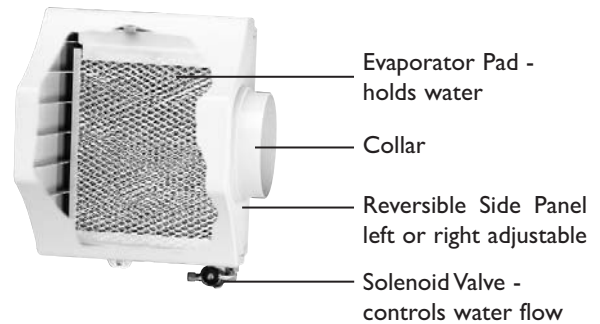
# G200/G300

## BYPASS FLOW-THRU HUMIDIFIERS

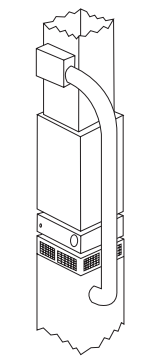
MODEL	G200	G300
PART NO.	351454-001	354409-001
TYPE OF UNIT	Bypass flow-thru	Bypass flow-thru
VOLTAGE	24 V	24 V
SOLENOID VALVE	24 V brass, rated for 150 psi (10.34 bar)	24 V brass, rated for 150 psi (10.34 bar)
EVAPORATOR PAD	9" W x 2" D x 11" H (229 W x 51 D x 279 H mm)	9" W x 2" D x 14" H (229 W x 51 D x 356 H mm)
WEIGHT	4.9 lbs. (2.2 kg) / Shipping 8.15 lbs. (3.7 kg)	5.1 lbs. (2.3 kg) / Shipping 8.4 lbs. (3.8 kg)
DIMENSIONS	11½" W x 9½" D x 16½" H (292 W x 241 D x 419 H mm)	11½" W x 9½" D x 19½" H (292 W x 241 D x 495 H mm)
PACKAGING SIZE	14" W x 10½" D x 17½" H (356 W x 267 D x 443 H mm)	14" W x 10½" D x 20" H (356 W x 267 D x 508 H mm)
DUCT OPENING	8⅝" W x 10¾" H (219 W x 273 H mm)	8⅝" W x 13¾" H (219 W x 349 H mm)
HUMIDISTAT	Adjustable from 20% to 80% Relative Humidity	Adjustable from 20% to 80% Relative Humidity
DRAIN	½" (12.8 mm) O.D.	½" (12.8 mm) O.D.

### Evaporative Supply Capacity — Gallons per day (Liters per hour)

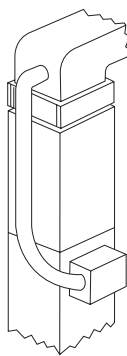
FURNACE TEMPERATURE	G200	G300
100°F / 37.7°C	9.5 (1.5)	12.8 (2.0)
120°F / 48.8°C	14.4 (2.3)	18.0 (2.8)
140°F / 60°C	18.7 (2.9)	23.3 (3.7)



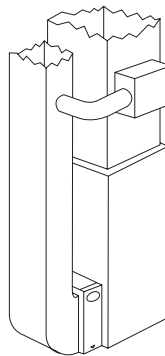
### Installation Options



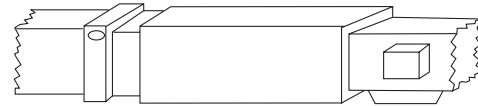
Upflow  
Bottom Return



Downflow  
Counterflow



Upflow  
Side Return



Horizontal

Fedders Residential HVAC  
505 Martinsville Rd.  
Liberty Corner, NJ 07938  
(908)604-8686  
Form No. H-G200300-0505



All product specifications reflect available information at the printing of this brochure. Fedders reserves the right to revise or modify products and/or specifications without notice.  
©2005 Fedders Residential HVAC. Herrmidifier is a registered trademark of Herrmidifier Company, Inc.