

WALNUT NINE PENDANT WITH VORONOI II (UK-EU)

The Walnut Nine Pendant by Tala is an impressive lighting system designed for maximum impact.

Housed in a circular metal canopy in a white finish, a broad Walnut disc and nine Brass grips create a practical yet attractive base for nine Walnut pendants to hang at varying lengths. Paired with the iconic Voronoi II LED bulb.

LAMP

Shape: Custom
Bulb Materials: Borosilicate Glass and Brass Cap
Bulb Finish: Iron tinted
Beam angle: 360°
Base: E27
Working temperature: -5°C to 40°C
Warm up time: Instant
Warranty: 3 years
Input Voltage: 220-240V
Fixture Materials:
 White Powder Coated Steel, Walnut Veneer,
 Walnut & Glass



DIMENSIONS:

BULB:
 165 x 300 mm (Width x Length)

FIXTURE:
 50 x 85 mm (Width x Length)

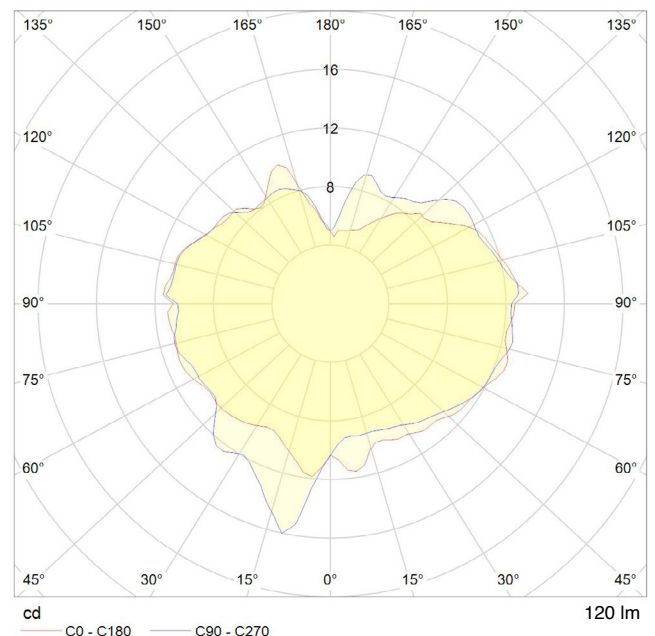
LARGE CANOPY:
 508 x 50 mm (Width x Length)

CABLE:
 5000mm (Length)

PERFORMANCE (PER BULB)

CRI (colour rendering index)	95
Lamp lumen output	120lm
Flicker	<5%
Lumens per circuit watt (LM/W)	40lm/W
Lifetime (TM-21) (hours)	15,000hrs
Colour Temperature	2200K
Power factor	0.9

POLAR DIAGRAM



DIMMING

Dimmable: Yes, in-line dimmer included.
Dimming type: Trailing edge

SKU CODE: CP-WHT-SET-NON-WP-02-EU

IES/LDT FILE:
 Available upon request.

EAN CODE: 5060400158195

CANOPY:
 IP20

BULBS:
 IP54



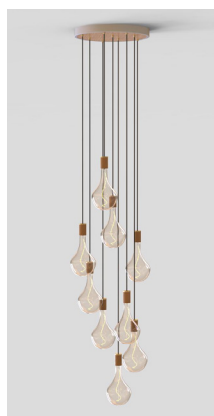
OAK NINE PENDANT WITH VORONOI II (UK-EU)

The Oak Nine Pendant by Tala is an impressive lighting system designed for maximum impact.

Housed in a circular metal canopy in a white finish, a broad Oak disc and nine Brass grips create a practical yet attractive base for nine Oak pendants to hang at varying lengths. Paired with the iconic Voronoi II LED bulb.

LAMP

Shape: Custom
Bulb Materials: Borosilicate Glass and Brass Cap
Bulb Finish: Iron tinted
Beam angle: 360°
Base: E27
Working temperature: -5°C to 40°C
Warm up time: Instant
Warranty: 3 years
Input Voltage: 220-240V
Fixture Materials:
 White Powder Coated Steel, Oak Veneer, Oak & Glass



DIMENSIONS:

BULB:
 165 x 300 mm (Width x Length)

FIXTURE:
 50 x 85 mm (Width x Length)

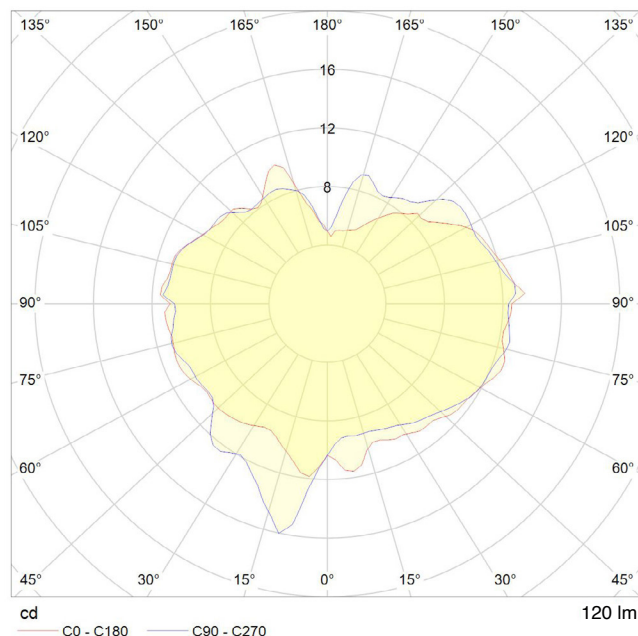
LARGE CANOPY:
 508 x 50 mm (Width x Length)

CABLE:
 5000mm (Length)

PERFORMANCE (PER BULB)

CRI (colour rendering index)	95
Lamp lumen output	120lm
Flicker	<5%
Lumens per circuit watt (LM/W)	40lm/W
Lifetime (TM-21) (hours)	15,000hrs
Colour Temperature	2200K
Power factor	0.9

POLAR DIAGRAM



DIMMING

Dimmable: Yes, in-line dimmer included.
Dimming type: Trailing edge

SKU CODE: CP-WHT-SET-NON-OP-02-EU

IES/LDT FILE:
 Available upon request.

EAN CODE: 5060400158188

CANOPY: IP20	BULBS: IP54
-----------------	----------------



GRAPHITE NINE PENDANT WITH VORONOI II (UK-EU)

The Graphite Nine Pendant by Tala is an impressive lighting system designed for maximum impact.

Housed in a circular metal canopy in a black finish, a broad Ash wood disc and nine black grips create a practical yet attractive base for nine Graphite pendants to hang at varying lengths. Paired with the iconic Voronoi II LED bulb.

LAMP

Shape: Custom
Bulb Materials: Borosilicate Glass and Brass Cap
Bulb Finish: Iron tinted
Beam angle: 360°
Base: E27
Working temperature: -5°C to 40°C
Warm up time: Instant
Warranty: 3 years
Input Voltage: 220-240V
Fixture Materials:
 Black Powder Coated Steel, Black Stained Ash Veneer,
 Graphite & Glass



DIMENSIONS:

BULB:
 165 x 300 mm (Width x Length)

FIXTURE:
 40 x 65 mm (Width x Length)

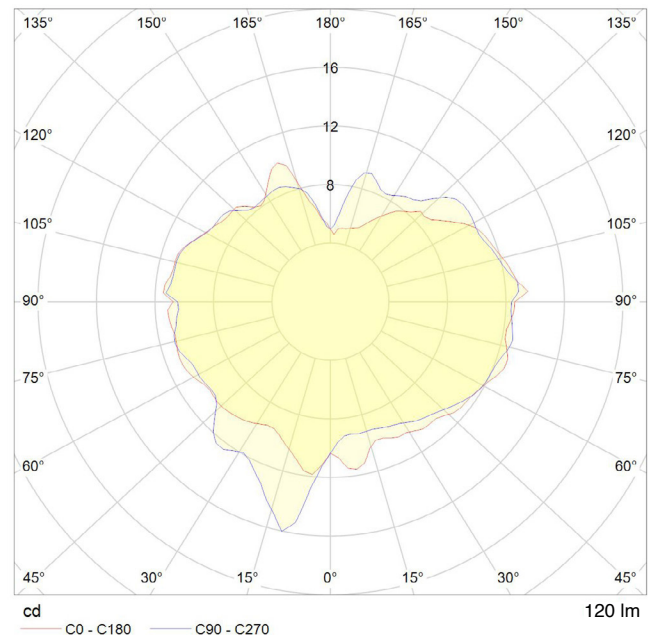
LARGE CANOPY:
 508 x 50 mm (Width x Length)

CABLE:
 5000mm (Length)

PERFORMANCE (PER BULB)

CRI (colour rendering index)	95
Lamp lumen output	120lm
Flicker	<5%
Lumens per circuit watt (LM/W)	40lm/W
Lifetime (TM-21) (hours)	15,000hrs
Colour Temperature	2200K
Power factor	0.9

POLAR DIAGRAM



DIMMING

Dimmable: Yes, in-line dimmer included.
Dimming type: Trailing edge

SKU CODE: CP-BLK-SET-NON-GP-02-EU

IES/LDT FILE:
 Available upon request.

EAN CODE: 5060400158218

CANOPY:
IP20

BULBS:
IP54



BRASS NINE PENDANT WITH VORONOI II (UK-EU)

The Brass Nine Pendant by Tala is an impressive lighting system designed for maximum impact.

Housed in a circular metal canopy in a white finish, a broad Brass disc and nine Brass grips create a practical yet attractive base for nine Brass pendants to hang at varying lengths. Paired with the iconic Voronoi II LED bulb.

LAMP

Shape: Custom
Bulb Materials: Borosilicate Glass and Brass Cap
Bulb Finish: Iron tinted
Beam angle: 360°
Base: E27
Working temperature: -5°C to 40°C
Warm up time: Instant
Warranty: 3 years
Input Voltage: 220-240V
Fixture Materials:
 White Powder Coated Steel, Brass Plated Steel, Brass & Glass



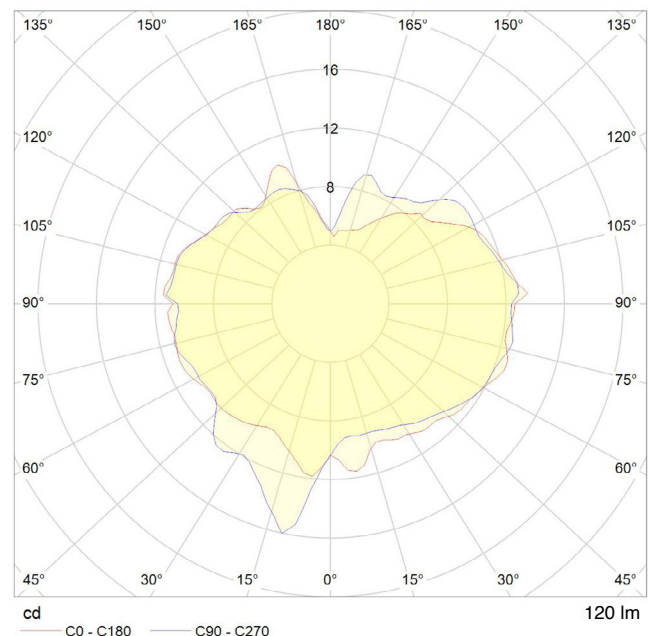
DIMENSIONS:

BULB:
 165 x 300 mm (Width x Length)
FIXTURE:
 40 x 65 mm (Width x Length)
LARGE CANOPY:
 508 x 50 mm (Width x Length)
CABLE:
 5000mm (Length)

PERFORMANCE (PER BULB)

CRI (colour rendering index)	95
Lamp lumen output	120lm
Flicker	<5%
Lumens per circuit watt (LM/W)	40lm/W
Lifetime (TM-21) (hours)	15,000hrs
Colour Temperature	2200K
Power factor	0.9

POLAR DIAGRAM



DIMMING

Dimmable: Yes, in-line dimmer included.
Dimming type: Trailing edge

SKU CODE: CP-WHT-SET-NON-BP-02-EU
 EAN CODE: 5060400158201

IES/LDT FILE:
 Available upon request.

CANOPY:
 IP20

BULBS:
 IP54

