



OPERATOR'S AND MAINTENANCE MANUAL

FM30-FM60

FOR SERIAL #s STARTING
WITH 1057
RELEASED 11/3/17



DANGER

Read this manual and the manual for your tractor carefully to acquaint yourself with both machines before operating!

For support and contact information

Visit: www.fencemower.com

Phone: 713-501-5356

MODEL NUMBER _____
SERIAL NUMBER _____
DATE OF PURCHASE _____

Customer Pre-Operation Check List		Reference
<input type="checkbox"/>	Read, understand and follow the general safety rules listed in this manual.	Page 2
<input type="checkbox"/>	Check decals for position and legibility	Page 3
<input type="checkbox"/>	Check all blades for sharpness and condition.	Page 7
<input type="checkbox"/>	Check gearbox lube level.	Page 8

Table of Contents

Section 1 INTRODUCTION	1
Owner's Responsibility	1
Purpose of this Manual	1
Safety-Alert Symbol	1
Signal Words	1
Customer Assistance	1
Section 2 SAFETY INFORMATION	2
General Safety Rules	2
General Safety Rules Continued	3
Safety Decals	3
Section 3 ASSEMBLY INSTRUCTIONS	4
Assembly	4
Diagram/Photo	4A
Section 4 OPERATING INSTRUCTIONS	5
Operation	5
Lights, SMV Emblems	5
Low Speed	5
Normal Procedures	5
Traveling	5
Mowing	5
Reverse Operation	5
Obstacles	5
Positioning	5
Height Adjustment	5
Section 5 LUBRICATION	6
Spindle	6
Driveshaft	6
Tail Wheel	6
Section 6 MAINTENANCE	7
Blades	7
Check Blade Condition	7
Remove Blades	7
Replace Blades	7
Gearbox	8
Gearbox Lube Level	8
Gearbox Seals and Gasket	8
Input Shaft Seal and Cover Gasket	8
Output Shaft Seal	8
Gearbox Mounting Hardware	8
Tail Wheel	8
Replace Wheel	8
Replace Pivot	8
Reference – Parts Lists	9-14
Torque Specifications Coarse Thread	15
Torque Specifications Fine Thread & Head Markings	16
Warranty	17

© Copyright 2016 All Rights Reserved

Wright Fence Mower, LLC provides this publication "as is" without warranty of any kind, either expressed or implied. Every precaution has been taken in the design of this manual; however Wright Fence Mower, LLC assumes no responsibility for errors or omissions. Neither is any liability assumed for damages resulting from the use of the information contained herein. Wright Fence Mower, LLC reserves the right to revise and improve this product at any time. The illustrations in this manual are not intended for the safe and proper assembly or disassembly of this product, but for parts ordering reference only.

REVISED 11/3/2017

Owner's Responsibility

The manufacturer has no control over the ultimate use of the mower and therefore assumes no responsibility or liability for damage or injury resulting from the use of this machine.

The upkeep of the fence mower is the responsibility of the user. This upkeep includes all shielding, guards, and safety decals (OSHA Regulation 1928.57). You can obtain replacement parts from Wright Fence Mower, LLC.

Read this Operator's Manual before operating the mower. Failure to do so could result in serious injury or death to the operator or to others. Remember that most accidents occur due to neglect or carelessness. The operator is responsible for inspecting and making repairs as may be necessary. Cleaning after each use and storage under a shelter will extend the life of the mower.

Purpose of This Manual

This manual provides information on safety, operation, adjustments, troubleshooting and maintenance of your new mower. Please read and follow all the recommendations to help ensure that you get many years of service from your new Wright mower.

If you need additional copies of this manual please contact Wright Fence Mower, LLC. and request part number 24551.

Safety-Alert Symbol



This symbol is the safety alert symbol. It appears throughout this manual to call your attention to instructions involving your personal safety and the safety of others. Failure to follow these instructions can result in injury or death.

Signal Words

Safety signal words are words that call attention to the safety sign and designate a degree or level of hazard seriousness. The signal words used throughout this manual are DANGER, WARNING and CAUTION. Please read and follow all safety messages that have these signal words shown for your protection.

DANGER

Indicates an imminently hazardous situation which, if not avoided, will result in death or serious injury.

WARNING

Indicates a potentially hazardous situation which, if not avoided, could result in death or serious injury.

CAUTION

Indicates a potentially hazardous situation which, if not avoided, may result in minor or moderate injury.

Customer Assistance

The Wright Fence Mower, LLC sales team would like you to be satisfied with your new FENCE MOWER. If for some reason you have any questions about the information in this manual or have a problem with your mower and need further assistance, please contact:

WRIGHT FENCE MOWER, LLC
For support and contact information
Visit: www.fencemower.com or call: 713-501-5356

SAFETY INFORMATION

General Safety Rules

READ AND FOLLOW THE INSTRUCTIONS IN THIS OPERATING MANUAL AND ESPECIALLY IN THIS SAFETY SECTION. FAILURE TO DO SO CAN RESULT IN SERIOUS INJURY OR DEATH.

WARNING

SAFETY of the operator is one of the main concerns in designing and developing the fence mower. However, every year accidents occur which could have been avoided by a few seconds of thought and a more careful approach to handling equipment. You, the operator, can avoid many accidents by observing the following instructions in this manual and insist those working with you, or for you, to follow them.

DANGER

- *NEVER allow an UNQUALIFIED OR UNDERAGE person to operate the mower.*
- *NEVER use alcoholic beverages or drugs that can hinder alertness or coordination while operating this equipment. Consult your doctor about operating this machine while taking prescription medications.*

WARNING

*MANY varied objects, such as fence wire, can become entangled in the operating parts of the mowing and dirt removal blade. These items **MUST BE AVOIDED**. Inspect the fence lines for loose wires, and wires that may be buried. **DO NOT ATTEMPT TO OPERATE THE EQUIPMENT WHERE LOOSE WIRES, OR WIRES THAT ARE NOT SECURED BY THE FENCE POST.** Repair the fence before attempting to mow underneath.*

WARNING

- *ALWAYS stop the tractor, disengage the PTO, set parking brake, turn off the tractor engine, remove key and wait for all rotary motion to stop **BEFORE** dismantling the tractor.*
- *NEVER leave the equipment unattended with the tractor running.*

DANGER

- *NEVER place hands or feet under the mower with the tractor engine running or before you are sure all motion is stopped. Stay clear of all moving parts.*
- *DO NOT reach or place any part of your body under equipment until it is blocked securely.*

DANGER

THE rotating parts of this machine have been designed and tested for rugged use. However, they could fail upon impact with heavy, solid objects such as steel guardrails, and concrete abutment. Such impact could cause the broken objects to be thrown outward. To reduce the possibility of damage to the equipment, serious injury, or even death, never let the mowing and dirt removal blade come into contact with such obstacles.

WARNING

STAY alert for uneven terrain, loose fence wire and hidden hazards. Keep away from drop-offs and hazards that could cause roll over. Use extreme care and maintain minimum ground speed when operating. Avoid operating on steep slopes.

WARNING

ALWAYS transport the fence mower in a lifted (up) position behind the tractor when moving from one location to another.

DANGER

UNDER no circumstances should children under the age of 18 be allowed to work with this equipment. Do not allow persons to operate or assemble this unit until they have read this operating manual and have developed a thorough understanding of the safety requirements.

DANGER

THIS equipment is dangerous to children and persons unfamiliar with farm machinery.

WARNING

THE Fence Mower is designed for use only on tractors with 540-RPM power takeoff. Disengage the power takeoff (PTO) and place the transmission in neutral before attempting to start the engine.

WARNING

*NEVER exceed the limits of a piece of equipment. If it's ability to do a job, or to do so safely, is in question - **DON'T TRY IT.***

SAFETY INFORMATION

General Safety Rules Continued

DANGER

DO NOT modify this equipment in any way. Unauthorized modification could result in serious injury or death and may impair the function and life of the machine.

WARNING

IN addition to the design and the confirmation of this equipment, including safety signs and safety equipment, accident prevention is dependent upon the awareness, concern, prudence, and proper training of personnel involved in the operation, transport, maintenance and storage of the machine.

WARNING

THE use of this equipment is subject to certain hazards that cannot be protected against by the mechanical means or product design. Most accidents occur because of neglect or carelessness. Keep all helpers and bystanders at least several hundred feet from operating the Fence Mower. Only properly trained people should operate this machine.

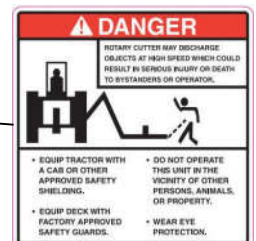
Safety Decals

Your Wright Fence Mower ships with all safety decals in place. They are located in areas on the mower that are potentially hazardous. Please locate, read and follow the information you find on these decals.

By law, you must replace any safety decals that are damaged or missing. You can order a replacement decal kit from Wright Fence Mower, LLC. Ask for part number 16808 when ordering.

To apply the replacement decals:

- Clean the surface to place the new decal.
- Peel the decal away from the paper backing.
- Press firmly onto the clean surface.
- Squeeze out any air pockets using a straight edge.



ASSEMBLY

Before beginning the assembly of your Wright Fence Mower, read 1) the entire Operating Manual, 2) the warning decals and 3) the PTO manual provided. Once this is done, read and follow the below instructions.

PLEASE REFER TO THE DIAGRAM/PHOTO ON THE NEXT PAGE () DENOTES A REFERENCE

Step 1. Remove and discard the straps holding the mower to the pallet. (Use proper eye protection)

Step 2. Remove the cardboard box containing the trailing wheels.

Step 3. Remove the swing arm cover (A) and take out the parts packages. The parts packages will contain the following:

- (2) 3/4" bolts, washers, and nuts
- (2) Category 1 lifting arm pins
- (2) Chain with chain links attached
- (1) PTO 1/2" bolt and nut (shear pin)
- (1) Spring

Step 4. Lift-up on the swing arm (B) and pull it outward. Remove the A-frame (C) and then return the swing arm to its original position.

Step 5. Attach the A-frame to the base frame using the two 3/4" bolts, washers, and nuts. (D) Tighten, but allow for some movement of the A- frame.

Step 6. Attach the category 1 lifting arm pins to the A-frame and tighten. (E)

Step 7. Extend the swing arm (B) out to the mowing position.

Step 8. Attach the longer eyebolt to the swing arm. (F)

Step 9. Attach the shorter eyebolt to the base frame. (G)

Step 10. Attach the spring to the two eyebolts. Adjust to permit some slack (one inch) in the swing arm.

Step 11. Attach the chains from the tail wheels to the A-frame, as shown. (H)

Step 12. Attach the fence mower to your tractor using the 3-point hitch. Once attached to your tractor, start the tractor and lift the fence mower off the ground high enough to remove the pallet.

Step 13. Remove the trailing wheels from the cardboard box. Insert the wheels so they are below the frame. (I) (Spacers are provided to adjust the desired wheel height.) Insert the locking pins after adjusting. (I)

Step 14. Install the PTO driveline. (J)

Step 15. Lift-up the fence mower using the lifting arms of the tractor. Check to make sure there is clearance between the mower and the rear tractor wheels. Check to see how close you will need to be to the fence line when cutting.

Step 16. Lower the mower, clear everyone away, and engage the PTO to check blade rotation.

Step 17. Lower the fence mower to where the tail wheels touch the ground. You should have a little slack in the chain.

Step 18. Before mowing under your fence line, operate the mower away from the fence.

Make sure the front and back of the mower are even. Do not operate with the front of the mower lower than the back.

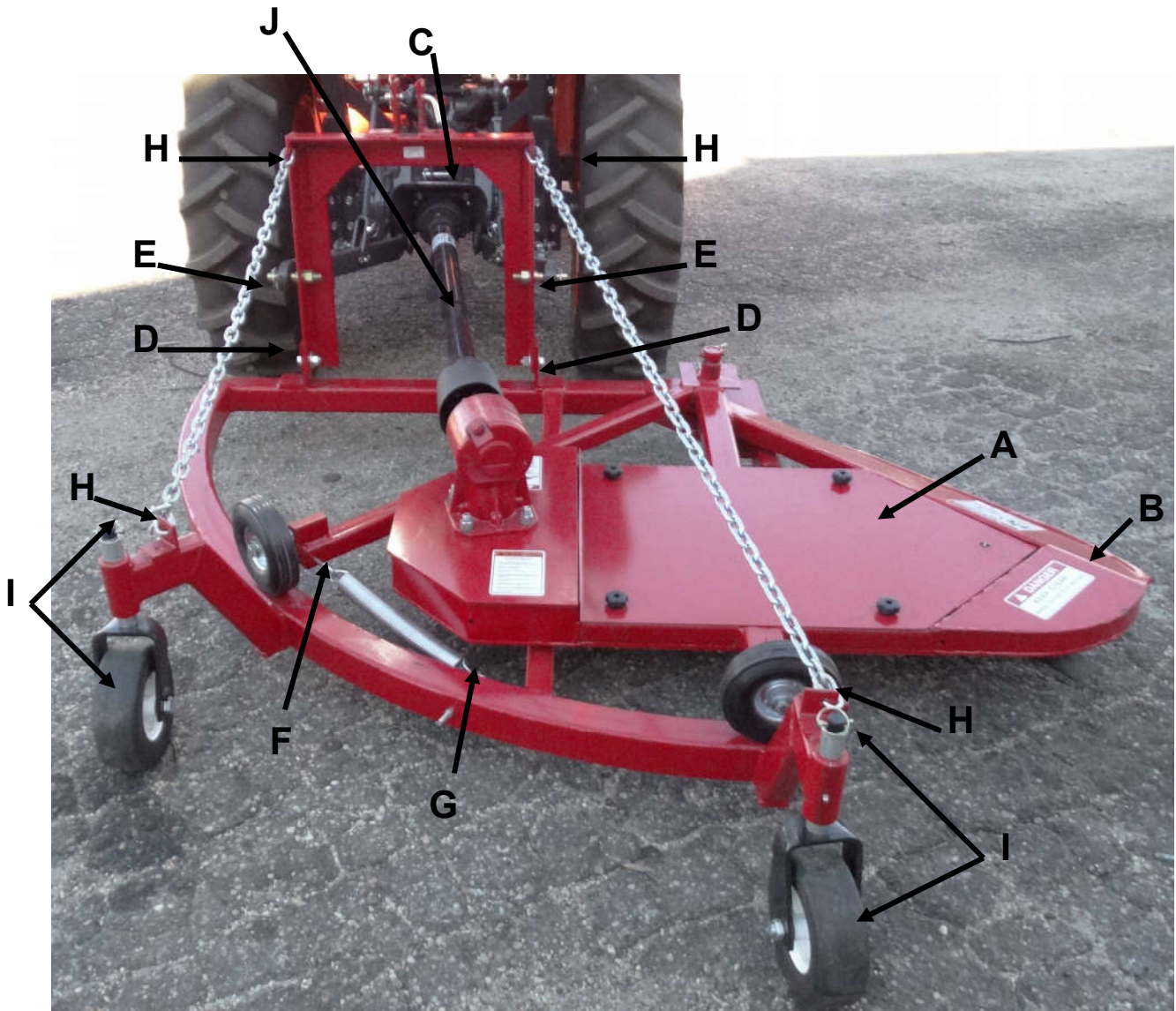
Operate the mower at a slow speed so as not to damage your fence posts.



WARNING

ALWAYS use caution when assembling and making adjustments!

ALWAYS turn the tractor off and disengage the PTO before making any adjustments to the fence mower.



OPERATING INSTRUCTIONS

OPERATION

Danger

Incorrect operation of the fence mower may produce hazardous situations that can lead to serious injury or death. The fence mower has been designed to minimize the risks of accidents, but there is no substitute for a careful operator.

Note: See SAFETY PRECAUTIONS in the introduction section for a list of safety related cautions to be observed while operating mower.

Lights, SMV Emblems

If operating along public roads, warning lights or slow moving vehicle emblems should be used unless prohibited by law. Check local and state codes.

NORMAL PROCEDURES

Traveling

Raise the mower to its maximum height when traveling. Additional ground clearance can be obtained by shortening the tractor hitch center arm. NEVER engage PTO while mower is in traveling position WITHOUT a cutting load.

Warning

Transporting the mower at maximum height changes the center of gravity of the tractor. Do not travel at high rates of speed with the mower in travelling position, especially over rough or bumpy terrain. Tractor instability during high-speed travel can cause a rollover, resulting in serious personal injury or death.

Mowing

- Watch for holes, rocks, roots or other hidden hazards.
- Keep away from drop-offs.
- Do not cut near the edge of a gully or bank.
- Slow down before turning.
- Engage PTO as directed by tractor manufacturer.

Reverse Operation

Do not operate the mower in reverse unless absolutely essential.

Caution

DO NOT operate fence mower in reverse unless absolutely essential and is allowed by the tractor manufacturer. Reverse PTO operation may damage tractor drivetrain. Material may be thrown out through the front of the fence mower during reverse operation, posing a hazard to the operator and bystanders.

- Look behind mower before putting tractor in reverse gear.
- Back tractor at lowest speed available
- Watch back of mower at all times while backing.

Obstacles

- Review the fence or fences you are going to work on. Look for obstructions, loose wires or any visual item you see that you would not run a rotary fence mower over.
- When observing loose wires, or wires that are broken and on the ground, make the necessary repairs BEFORE attempting to use the fence mower in this area.
- Determine which side of the fence has the best access for driving along side of the fence line.

Positioning

- Position the fence mower as shown in the top view illustration. Once in position, you can engage the PTO and set the RPM's to 540. You must use the lowest gears possible on your tractor. The speed of your tractor and how you maintain control in driving close to the fence line determines how successful your mowing will be.

NOTE: When using the fence mower for the first time it is best to choose a section of fence that has light vegetation of only grass, weeds, and a higher than normal bottom strand of wire. Practice until you feel comfortable in using the up and down lever of the tractor.

- Keeping the tractor positioned as in the illustration, continue operating at low gear speeds.

NOTE: If you start removing top soil or dirt, just pause the Tractor (stop moving forward) and lift the fence mower up slightly. (1 to 2 inches only)

NOTE: If you hear the V belt drives squeal, pause the tractor and disengage the PTO. You have gone too low, and need to move the swing arm up. Do this slowly with the lifting arms of the tractor. After you have moved the swing arm up, engage the PTO, and drive the tractor forward.

Danger

NEVER get off the tractor until you have disengaged the PTO, and have come to a complete stop. Put the tractor in neutral, turn off the engine, and wait for the rotation of the PTO shaft and blade to stop before getting down.

LUBRICATION

Visually inspect the fence mower at least once a week. Lubricate parts with good lithium EP grease. If heavy, long-duration operation is expected, lubricate more frequently. Wipe off excess grease after lubricating.



MAINTENANCE

Danger

NEVER attempt any checks, repairs or adjustments with the tractor engine running or the power take-off engaged. Adjustment of rotating parts while tractor engine is running can result in serious personal injury or death if the PTO accidentally engages.

BLADES

Check Blade Condition

Danger

Excessively worn or dull mower blades, or replacement or sharpening of only one mower blade can cause excessive mower vibration, damage to the gearbox and structural damage to the mower. Excessive vibration can cause rotating parts to break and fly off the fence mower, resulting in serious injury or death to the operator or bystanders.

- Lift and support mower by approved means.

Danger

The fence mowers weigh BETWEEN 420 and 650 pounds and will cause severe injury or death if it falls on the operator during maintenance. Support the mower with a supporting device having a capacity for at least 1 ½ times the weight of the mower (e.g. – 520 pound mower = 650 pound lifting device capacity).

- Check mower blades for sharpness and condition.
Replace worn mower blades in pairs only.

Remove Blades

- Remove ½" **left hand thread** spindle bolt.
- Remove blade.

Replace Blades

- Replace worn blade.
- Install ½" **left hand thread** spindle bolt and tighten.

MAINTENANCE

Gearbox Lube Level

After periods of heavy use (at least every 10 hours of operation), or after repairing the gearbox, or if lubricant leaks are observed, check gearbox lubricant levels.

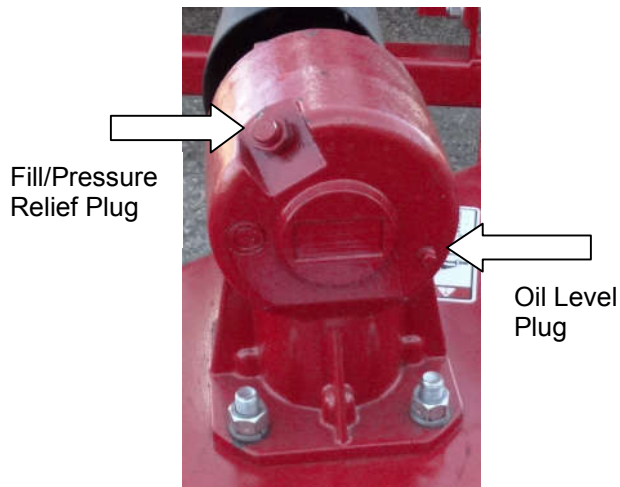
Caution

DO NOT operate the mower if lubricant level is low. Replace damaged seals or gasket and add lubricant to the correct level. DO NOT OVERFILL.

- Position mower on a level surface.
- Visually check and look for leaks.
- Remove gearbox lubricant level plug and check lubricant level. Lubricant should be at or near bottom of hole.
- If lubricant is low, remove gearbox Fill/Pressure Relief Plug (P/N 15664) and add SAE 85-140 lubricant until lubricant starts to flow from level inspection hole. **DO NOT OVERFILL.** Overfilling will induce leakage and cause damage to seals and gaskets.
- Replace Lubricant Level Plug and Fill/Pressure Relief Plug (P/N 15664).

Caution

*FILL/PRESSURE RELIEF PLUG (P/N 15664) Must not be **CLOGGED OR RESTRICTED**. Must be able to vent gearbox.*



Checking Gearbox Lubricant Level

GEARBOX

Gearbox Seals and Gaskets

Check the gearbox for leaks around the seals and gasket daily when the mower is in use. If a shaft seal or gasket is damaged, lubricant will leak out of the gearbox.

Input Shaft Seal and Cover Gasket

- Remove gearbox cover.
- Replace shaft seal and cover gasket.
- Replace gearbox cover.
- Replace drain plug and refill with lubricant.

Output Shaft Seal

- Remove gearbox from top deck. Drain lubricant.
- Replace shaft seal.
- Install gearbox on top deck.
- Refill with lubricant and replace drain plug.

Gearbox Mounting Hardware

Check that the gearbox is tight on the mower top deck each day the mower is in use. If it becomes loose, tighten the mounting bolts.

TAIL WHEELS

Replace Wheel

Caution

Adequately support the mower and the wheel before removing the axle. Both the wheel and the mower are heavy and could cause damage to the mower or serious injury if dropped.

- Remove wheel axle nuts and axle.
- Remove wheel.
- Position wheel in pivot yoke.
- Install wheel axle and nuts.

Replace Pivot

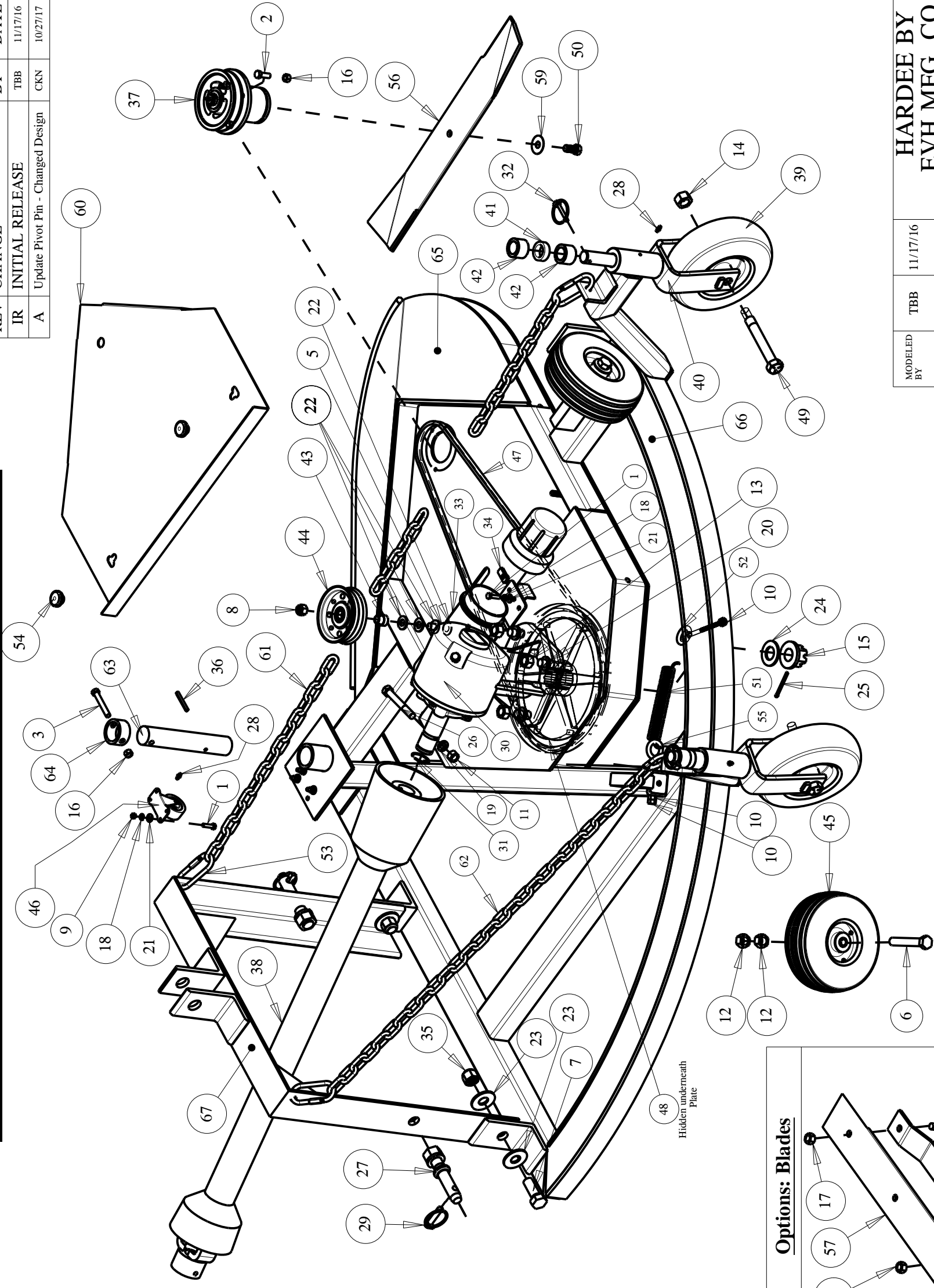
- Raise and support mower using approved means. Support mower high enough so that pivot shaft can be removed from tail wheel pivot bracket.



REFERENCE - FM 30 COMPLETE PARTS LIST

Fence Mower - FM-30 Complete

DWG. NO.	FM-3000	REV.	A
REV. CHANGE	BY	DATE	ECN
IR INITIAL RELEASE	TBB	11/17/16	---
A Update Pivot Pin - Changed Design	CKN	10/27/17	1690

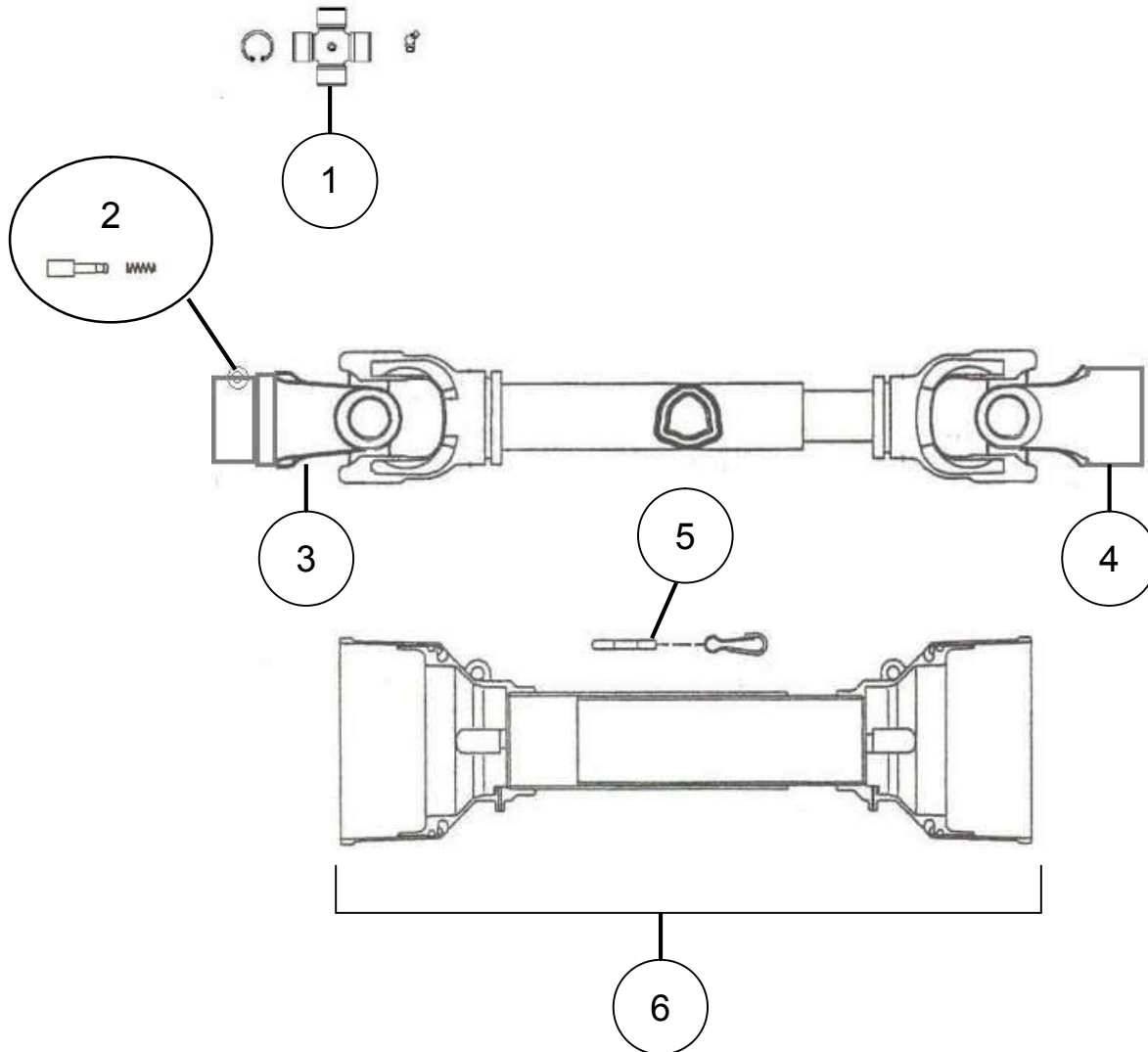


MODELED BY	TBB	11/17/16	DESCRIPTION	SHEET 1 of 1
CHECKED BY	CKN	11/17/16		
MATERIAL	R.M.N.		Fence Mower, FM-30 Complete	DWG. NO. FM-3000
	N/A			
Manufactured By: EVH Mfg. Co., LLC			DO NOT SCALE	DWG. NO. FM-3000

All Dimensions in Inches Unless Otherwise Specified
 Dimensions in [] are in Millimeters
 Tolerance Unless Otherwise Specified
 Fractional Dimensions ± 1/16"
 Decimal Dim. to Limits Shown
 All Holes to be +0. -1/32"

Item	Part Number	Qty.	Description
1	10002	6	Hex Bolt, 1/4"-20 X 1" Gr.5 Plated
2	10031	3	Hex Bolt 3/8" x 2-1/2" gr.5 plated
3	10034	1	Hex Bolt 3/8" x 2-1/2" gr.5 plated
4	10071	2	Hex Bolt 1/2" x 1 gr.5 plated
5	10073	1	Hex Bolt 1/2" x 2 gr.5 plated
6	10096	2	Hex Bolt 5/8"-11 x 4" gr.5 Plated
7	10111	2	Hex Bolt 3/4"-10 X 2" gr.5 Plated
8	10159	1	LOCKNUT W/NYLON INSERT(1/2" PLATED)
9	10160	4	Lock Nut 5/16" Plated
10	10162	3	3/8" Hex Nut (Gr.5 Plated)
11	10164	1	1/2" Hex Nut (Gr.5 Plated)
12	10165	4	Hex Nut 5/8" plated
13	10166	4	Lock Nut 5/8"-11 plated
14	10168	2	3/4"-10 Locknut (Gr.5 Plated)
15	10173	1	1" Castle Flange Nut
16	10175	4	3/8"-16 Locknut (Gr.5 Plated)
17	10176	2	1/2" Locknut (Gr.5 Plated)
18	10180	6	LOCK WASHER(1/4" PLATED)
19	10184	1	Lockwasher 1/2 plated
20	10185	4	Lockwasher 5/8" Plated
21	10200	6	1/4" Plated Flatwasher
22	10204	4	1/2 Flatwasher (Plated)
23	10206	4	Flatwasher 3/4 plated
24	10207	1	Flatwasher, 1" plated
25	10252	1	Cotter Pin 3/16" X 2" Plated
26	10269	1	Hex Bolt 1/2" X 3 3/4" gr.2 Plated
27	10307	2	Category I Hitch Pin
28	10322	3	1/4" Grease Fitting, 1/4"-28 Threaded
29	10346	2	3 pt. Snap Pin (Lynch Pin)
30	11172	1	40HP GEARBOX
31	11469	1	Retaining Ring
32	15392	2	1/4" - 3 pt. Snap Pin (Lynch Pin)
33	15854	1	Manual Holder
34	15860	2	U-Nut, 1/4"-20
35	16417	2	Hex Nut - 3/4"-10 Thrd Sz, 1-1/16" W, 7/8" H
36	16673	1	1/4"-Coiled Spring Pin-HD
37	16776	1	Spindle, Fence Mower
38	16777	1	PTO Driveshaft - 34"
39	16778	2	Trailing Wheel 9" , Fence Mower
40	16779	2	Trailing Wheel Fork
41	16780	2	1/2" Spacer, Fence Mower
42	16781	4	1" Spacer, Fence Mower
43	16783	1	Bushing - Idler Pulley, Fence Mower
44	16784	1	Idler Pulley (Flat)
45	16785	2	Roller Wheel 8" , Fence Mower
46	16786	1	Caster Wheel 2" , Fence Mower
47	16788	1	V Belt FM-30, Fence Mower
48	16789	1	Drive Pulley 12" , Fence Mower
49	16790	2	Axle Bolt, Trailing Wheel 9" - Fence Mower
50	16791	1	1/2" Spindle/Blade Bolt (Left Hand) - Replacement
51	16793	1	Spring FM-60, Fence Mower
52	16794	1	Eye Bolt - 3/8" x 6", Fence Mower
53	16795	4	QUICK LINK, 3/16" SCREW
54	16798	2	Knob - Cover, Fence Mower
55	16810	1	Eye Bolt - 3/8" x 5", Fence Mower
56	16812	1	Blade - Medium Cutting - Fence Mower
57	16815	1	Blade - Brush Removal - Fence Mower
58	16816	1	Blade - Dirt Removal - Fence Mower
59	16824	1	Conical Washer Blade - Spindle, Fence Mower
60	FM-0038	1	Deck Cover
61	FM-0080	1	Life Chain - FM-30 (53" Long)
62	FM-0081	1	Lift Chain - FM-30 (37" long)
63	FM-0084	1	Pivot Pin, Swing Arm FM-30
64	FM-0085	1	Pivot Pin Collar
65	FM-1005	1	Swing Arm Weldment - FM30
66	FM-1016	1	Base Frame Weldment
67	FM-1018	1	A Frame Weldment

16813 Driveshaft For FM-30

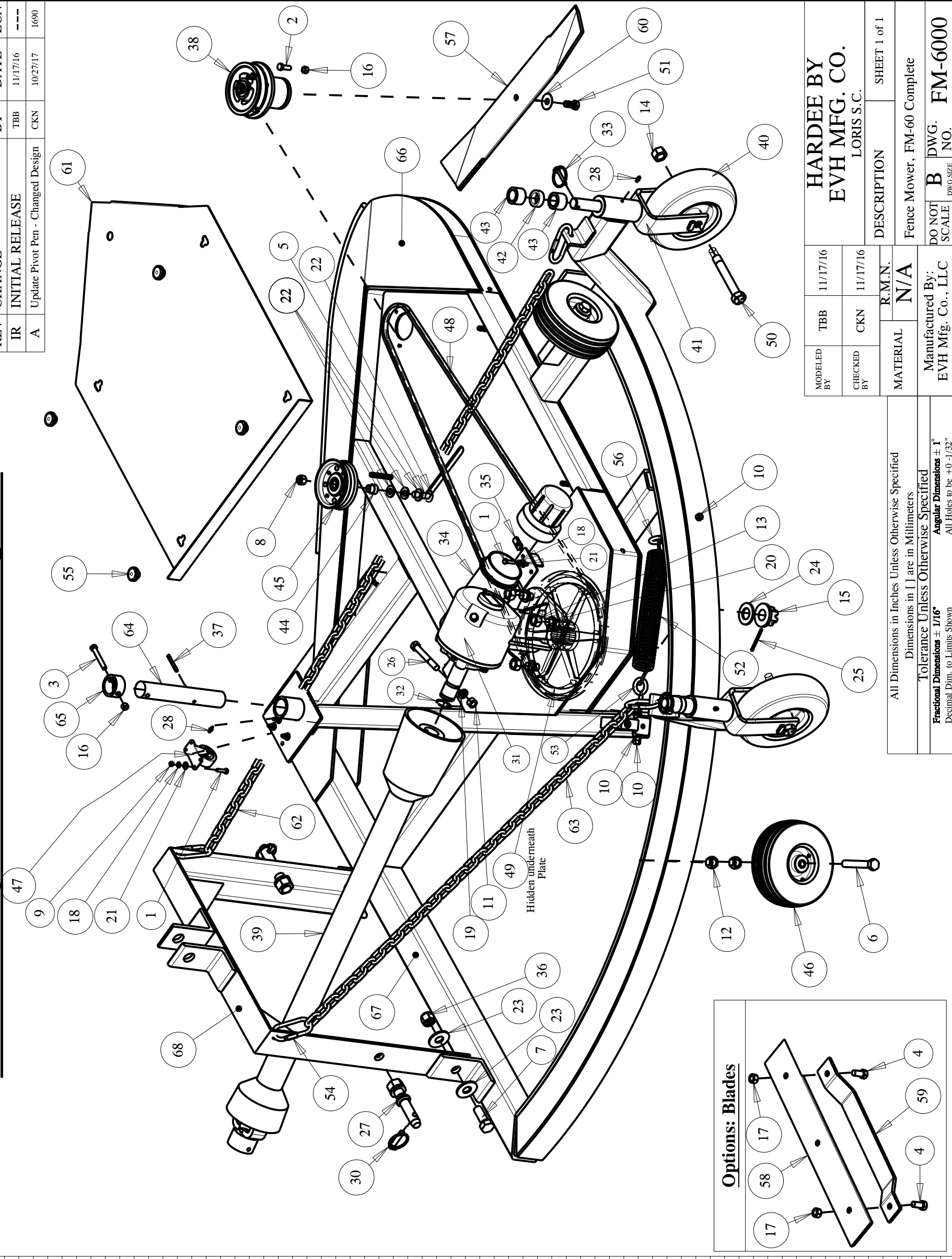


Key #	Part No.	Description	Qty.
1	15112	Cross Kit (Series 4)	2
2	15579	Pin Kit	1
3	11436	Yoke - Tractor	1
4	15111	Yoke - Spline less	1
5	16725	Chain, Anti-Rotation	2
6	17796	Shield Kit - Complete	1

REFERENCE - FM 60 COMPLETE PARTS LIST

Fence Mower - FM-60 Complete

DWG. NO.	FM-6000			REV.	A
REV	CHANGE	BY	DATE	ECN	
IR	INITIAL RELEASE	TBB	11/17/16	---	
A	Update Pivot Pin - Changed Design	CKN	10/27/17	1690	

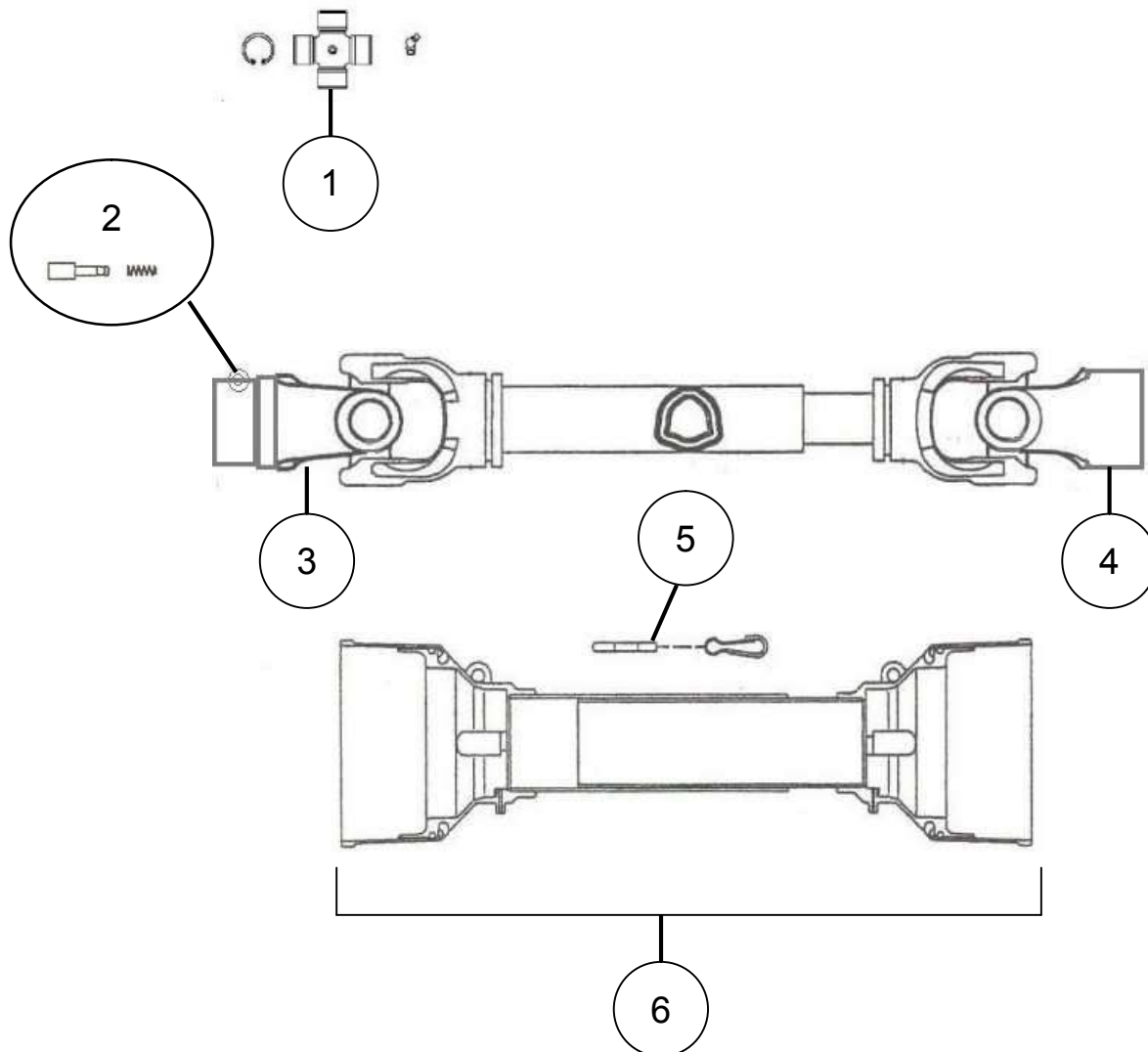


MODELED BY	TBB	11/17/16	R.M.N.	DESCRIPTION	SHEET 1 of 1
CHECKED BY	CKN	11/17/16			
MATERIAL	N/A			Fence Mower, FM-60 Complete	
Manufactured By:	EVH Mfg. Co., LLC			DO NOT SCALE	DWG. NO. FM-6000

All Dimensions in Inches Unless Otherwise Specified
 Dimensions in [] are in Millimeters
 Tolerance Unless Otherwise Specified
 Fractional Dimensions ± 1/16"
 Decimal Dim. to Limits Shown
 Angular Dimensions ± 1°
 All Holes to be +0.0/-0.032"

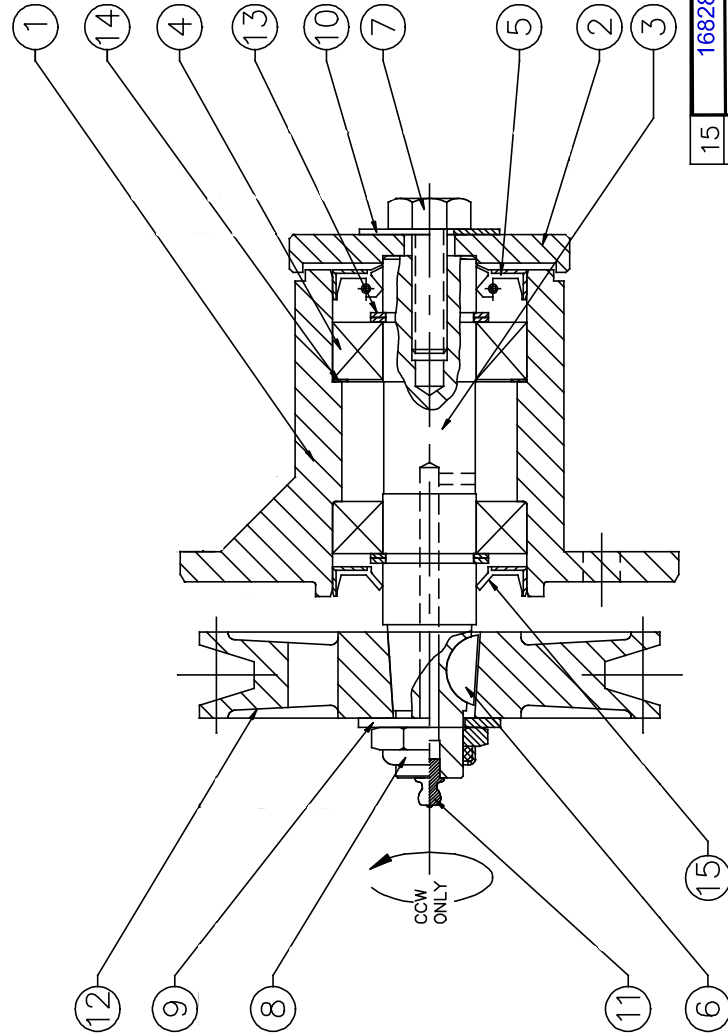
Item	Part Number	Qty.	Description
1	10002	6	Hex Bolt, 1/4"-20 X 1" Gr.5 Plated
2	10031	3	Hex Bolt 3/8" x 2-1/2" gr.5 plated
3	10034	1	Hex Bolt 3/8" x 2-1/2" gr.5 plated
4	10071	2	Hex Bolt 1/2" x 1 gr.5 plated
5	10073	1	Hex Bolt 1/2" x 2 gr.5 plated
6	10096	2	Hex Bolt 5/8"-11 x 4" gr.5 Plated
7	10111	2	Hex Bolt 3/4"-10 X 2" gr.5 Plated
8	10159	1	LOCKNUT W/NYLON INSERT(1/2" PLATED)
9	10160	4	Lock Nut 5/16" Plated
10	10162	3	3/8" Hex Nut (Gr.5 Plated)
11	10164	1	1/2" Hex Nut (Gr.5 Plated)
12	10165	4	Hex Nut 5/8" plated
13	10166	4	Lock Nut 5/8"-11 plated
14	10168	2	3/4"-10 Locknut (Gr.5 Plated)
15	10173	1	1" Castle Flange Nut
16	10175	4	3/8"-16 Locknut (Gr.5 Plated)
17	10176	2	1/2" Locknut (Gr.5 Plated)
18	10180	6	LOCK WASHER(1/4" PLATED)
19	10184	1	Lockwasher 1/2 plated
20	10185	4	Lockwasher 5/8" Plated
21	10200	6	1/4" Plated Flatwasher
22	10204	4	1/2 Flatwasher (Plated)
23	10206	4	Flatwasher 3/4 plated
24	10207	1	Flatwasher, 1" plated
25	10252	1	Hex Bolt 1/2" X 3 3/4" gr.2 Plated
26	10307	2	Category I Hitch Pin
27	10322	3	1/4" Grease Fitting, 1/4"-28 Threaded
28	10336	1	Gear Oil [85W-140] - (Not Shown)
29	10346	2	3 pt. Snap Pin (Lynch Pin)
30	11172	1	40HP GEARBOX
31	11469	1	Retaining Ring
32	15392	2	1/4" - 3 pt. Snap Pin (Lynch Pin)
33	15854	1	Manual Holder
34	15860	2	U-Nut, 1/4"-20
35	16417	2	Hex Nut - 3/4"-10 Thrd Sz. 1-1/16" W, 7/8" H
36	16673	1	1/4"-Coiled Spring Pin-HD
37	16776	1	Spindle, Fence Mower
38	16777	1	PTO Driveshaft - 34"
39	16778	2	Trailing Wheel 9" , Fence Mower
40	16779	2	Trailing Wheel Fork
41	16780	2	1/2" Spacer, Fence Mower
42	16781	4	1" Spacer, Fence Mower
43	16783	1	Bushing - Idler Pulley, Fence Mower
44	16784	1	Idler Pulley (Flat)
45	16785	2	Roller Wheel 8" , Fence Mower
46	16786	1	Caster Wheel 2" , Fence Mower
47	16787	1	V Belt FM-60, Fence Mower
48	16789	1	Drive Pulley 12" , Fence Mower
49	16790	2	Axle Bolt, Trailing Wheel 9" - Fence Mower
50	16791	1	1/2" Spindle/Blade Bolt (Left Hand) - Replacement
51	16792	1	Spring FM-60, Fence Mower
52	16794	1	Eye Bolt - 3/8" x 6" , Fence Mower
53	16795	4	QUICK LINK, 3/16" SCREW
54	16798	4	Knob - Cover, Fence Mower
55	16810	1	Eye Bolt - 3/8" x 5" , Fence Mower
56	16812	1	Blade - Medium Cutting - Fence Mower
57	16815	1	Blade - Brush Removal - Fence Mower
58	16816	1	Blade - Dirt Removal - Fence Mower
59	16824	1	Conical Washer Blade - Spindle, Fence Mower
60	FM-0039	1	Deck Cover Plate
61	FM-0078	1	Life Chain - FM-60 (65" Long)
62	FM-0079	1	Lift Chain - FM-60 (45" long)
63	FM-0083	1	Pivot Pin, Swing Arm FM-60
64	FM-0085	1	Pivot Pin Collar
65	FM-1009	1	Swing Arm Weldment - FM60
66	FM-1014	1	Base Frame Weldment
67	FM-1018	1	A Frame Weldment

16777 Driveshaft For FM-60



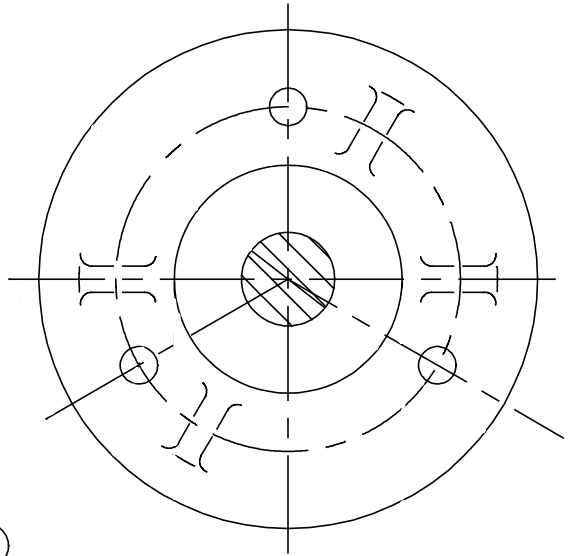
Key #	Part No.	Description	Qty.
1	15112	Cross Kit (Series 4)	2
2	15579	Pin Kit	1
3	11436	Yoke - Tractor	1
4	15111	Yoke - Spline less	1
5	16725	Chain, Anti-Rotation	2
6	17796	Shield Kit - Complete	1

EVH P/N 16776



NOTES:
 1) TYPE B V-BELT PULLEY.
 2) ROTATION IN CCW DIRECTION ONLY.
 (AS VIEWED FROM PULLEY SIDE).

DET	PART NUMBER	QTY.	DESCRIPTION
15	16828	1	GREASE SEAL
14	16827	1	WAVE SPRING WASHER
13	16826	4	RETAINING RING (REF. # 25)
12	16825	1	V-BELT PULLEY
11	10322	1	GREASE FITTING 1/4-28
10	16824	1	CONICAL WASHER
9	16823	1	FLAT WASHER
8	16822	1	HEX NUT-SELF LOCKING M18x1.5
7	16821	1	HEX HD. CAP SCREW 1/2-20UNF-LH
6	16820	1	WOODRUFF KEY
5	16819	1	LIP SEAL (REF # 9760)
4	16818	2	BALL BEARING (REF # 6205)
3	N/A	1	SHAFT
2	16817	1	END CAP
1	N/A	1	HOUSING
			DESCRIPTION

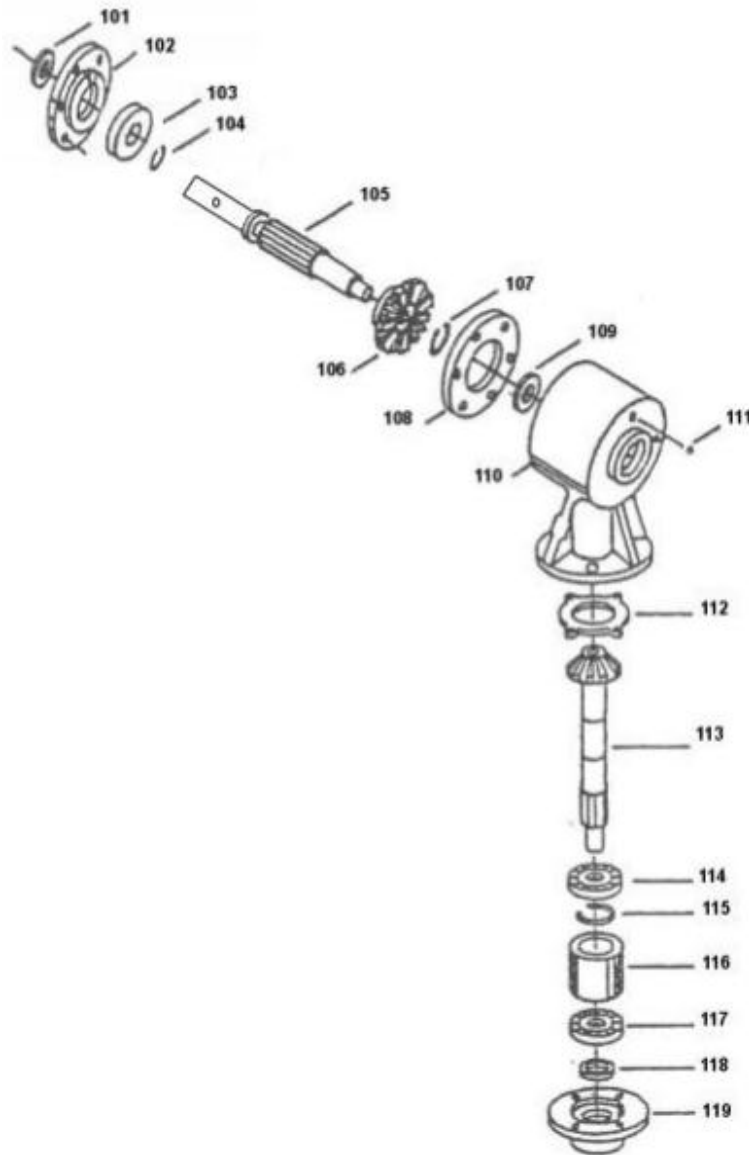


VIEW A-A

HARDEE BY EVH EVH P/N 16776

11172 Gearbox FM-30 and FM-60

(40 H.P. Gearbox 1:1.93 Ratio)



Key #	Part No.	Part Description	Key #	Part No.	Part Description
101	15688	Input seal	111	15664	Pressure relief plug
102	15689	Face plate	112	15753	Gasket
103	15750	Ball bearing	113	16017	Output shaft w/gear
104	15690	Retaining ring	114	15750	Ball bearing
105	15475	Input shaft	115	15695	Retaining ring
106	15545	Input gear	116	15696	Spacer
107	15695	Retaining ring	117	15750	Ball bearing
108	15691	Shim .004	118	15755	Output seal
109	15692	Ball bearing	119	15697	Bottom cap
110	15752	Housing			

Bolt Torque

Checking Bolt Torque

The tables shown below give correct torque values for various bolts and capscrews. Tighten all bolts to the torque specified in the chart unless otherwise noted. Check tightness of bolts periodically, using bolt torque chart as a guide. Replace hardware with the same strength bolt. Torque figures indicated are valid for non-greased or non-oiled threads and heads unless otherwise specified. Therefore, do not grease or oil bolts or cap screws unless otherwise specified in this manual. When using locking elements, increase torque values by 5%.

NOTE: Bolt Torques shown are maximum allowable values for ultimate safe working strength or external load-carrying capacity. The bolt torque are not applicable in cases where bolts are used as a pin-like device, holding together two or more movable objects and keeping them from spreading apart. – “Clamping Torque” Being dependent upon the application of the bolt. -

*Torque value for bolts and cap screws are identified by their head markings.
See Page 16*

Torque Specifications for Coarse Threads

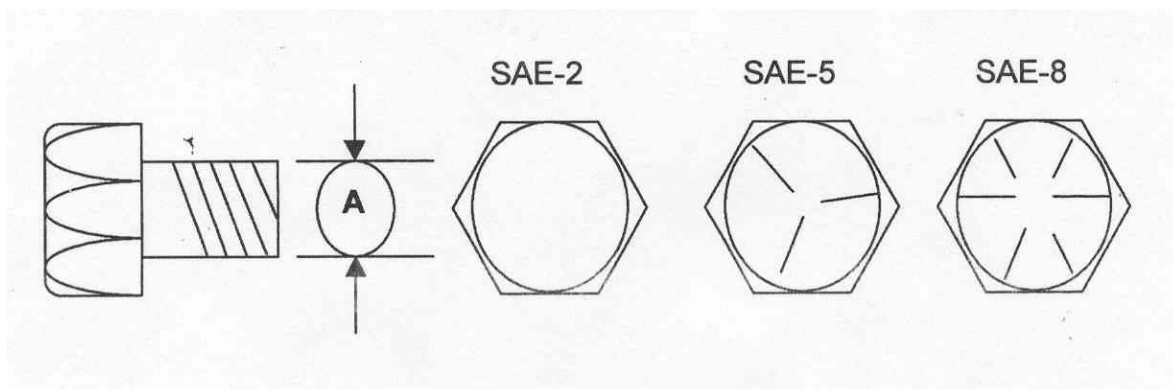
Diameter “A”	Bolt Torque				Coarse Thread	
	SAE-2		SAE-5		SAE-8	
	LB-FT	N.m	LB-FT	N.m	LB-FT	N.m
1/4" - 20	6	8	9	12	12	17
5/16" - 18	10	13	19	25	27	36
3/8" - 16	20	27	33	45	45	63
7/16" - 14	30	41	53	72	75	100
1/2" - 13	45	61	80	110	115	155
9/16" - 12	70	95	115	155	165	220
5/8" - 11	95	128	160	215	220	305
3/4" - 10	165	225	290	390	400	540
7/8" - 9	170	230	420	570	650	880
1" - 8	225	345	630	850	970	1320
1 1/8" - 7	354	478	794	1072	1287	1737
1 1/4" - 7	500	675	1120	1512	1875	2531
1 3/8" - 6	655	884	1470	1985	2382	3216
1 1/2" - 6	870	1175	1950	2632	3161	4267

See page 20 for Torque Specifications for Fine Threads and Head Markings

Torque Specifications for Fine Threads

Diameter "A"	Bolt Torque					
	SAE-2		SAE-5		SAE-8	
	LB-FT	N.m	LB-FT	N.m	LB-FT	N.m
1/4" - 28	6	8	10	14	14	19
5/16" - 24	12	16	19	26	27	36
3/8" - 24	22	31	35	47	49	66
7/16" - 20	36	49	55	74	78	105
1/2" - 20	55	74	85	115	120	162
9/16" - 18	80	108	122	165	172	232
5/8" - 18	110	148	170	230	240	324
3/4" - 16	200	270	297	400	420	567
7/8" - 14	180	243	474	640	668	402
1" - 12	274	370	705	952	995	1343
1" - 14	280	378	721	973	1019	1376
1 1/8" - 12	397	536	890	1201	1444	1950
1 1/4" - 12	553	747	1241	1675	2012	2716
1 3/8" - 12	746	1007	1672	2257	2712	3661
1 1/2" - 12	979	1322	2194	2962	3557	4802

Head Markings



WARRANTY

1. Limited Warranty

Wright Fence Mower, LLC warrants to the original retail purchaser (“Purchaser”) that the product that is the subject of this sale is free from defects in material and workmanship at the time of sale.

Under this warranty, Wright Fence Mower, LLC will replace the defective product free of charge to the Purchaser, with new replacement parts. Wright Fence Mower, LLC will not be liable for any special, incidental or consequential damages based upon a breach of warranty, breach of contract, negligence, strict tort liability, or any other legal theory. Such damages include, but are not limited to, loss of profits, loss of savings or revenue, loss of use of the product or any associated equipment, cost of capital, cost of any substitute equipment, facilities or services, down time, the claims of third parties including customers, and injury to property. These limitations also apply, to the extent allowed by law, to personal injury.

The purchaser must notify Seller in writing of any defect in material or workmanship within one (1) year following the date of purchase. If the equipment is used for commercial purposes, the Purchaser must notify the Seller in writing of any defect in material or workmanship within sixty (60) days following the date of purchase. In no event will Wright Fence Mower, LLC be liable under this warranty unless written notice is received by the seller within one (1) year from the date of original retail sale.

2. Warranty of Title

Wright Fence Mower, LLC warrants that it transfers a good title to the product free of any encumbrances, and free of the rightful claim of any third party for infringement of patent or copyright.

3. What is Not Covered by this limited Warranty

Wright Fence Mower, LLC will not be responsible for damage to or failure in the product which results from accident, misuse, abuse, neglect, installation of attachments not provided by Wright Fence Mower, LLC, modifications to the produce, or damage caused by the use of the product for purposes other than those for which it was designed.

4. No Other Warranties

Unless notified in writing and signed by both parties, this agreement is understood to be the complete and exclusive agreement and warranty between Wright Fence Mower, LLC and Purchaser, superseding all prior agreements, oral and written and all other communications between Wright Fence Mower, LLC and Purchaser related to the subject matter of this agreement. This limited warranty is in lieu of all other warranties, expressed or implied, including, but not limited to, the implied warranty of merchantability and the implied warranty of fitness for a particular purpose.

5. Allocation of Risk

This agreement allocates the risk of product failure between Wright Fence Mower, LLC and the Purchaser. This allocation is recognized by both parties as reflected in the price of the goods. The Purchaser acknowledges that he or she has read this agreement, understands it, and is bound by its terms.

NOTES:

NOTES:



www.fencemower.com

Wright Fence Mower, LLC
For support and contact information
Visit: www.fencemower.com or call: 713-501-5356