

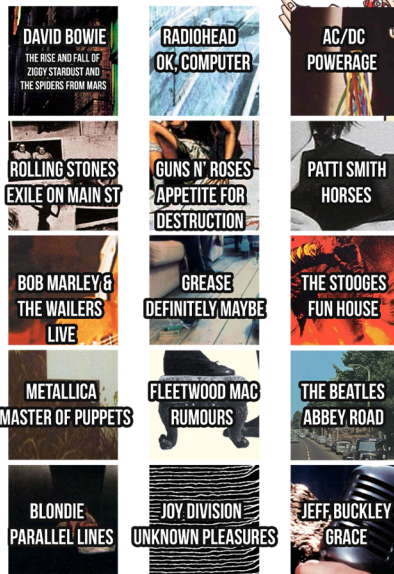
CURSE OF APOCALYPSE ACTIVITY BOOK ANSWERS

Record labels

name the record label logos



HELP IGGY IDENTIFY THESE ALBUM COVERS FROM THESE CLOSE UPS



ALBUM DESCRIPTION QUIZ

Name the albums from the descriptions of their covers. Eg. "A baby in a swimming pool" = Nirvana, Nevermind

- Radio waves from pulsar CP 1919.
- A section of the B507 in at John's Wood.
- A man standing outside 23 Heddon Street, London at night.
- DAVID BOWIE - The Rise and Fall of Ziggy Stardust and the Spiders from Mars
- Hollywood stunt men, Ronnie Rondell and Danny Rogers, shaking hands.
- PINK FLOYD - Wish You Were Here
- A photo of the wall of a Route 66 tattoo parlour.
- ROLLING STONES - Exile On Main Street
- A Boeing 727 crashing into a mountain.
- BEASTIE BOYS - Licensed To Ill
- Mapledurham Watermill, on the River Thames in Oxfordshire.
- BLACK SABBATH - Black Sabbath
- 86 and 98 East 8th Street / St. Mark's Place, Manhattan, New York.
- LED ZEPPELIN - Physical Graffiti
- Street performers at Sniffen Court, East 36th Street between Lexington and 3rd Avenue in Manhattan.
- Four men caught short at Easington Colliery, County Durham.
- THE WHO - Who's Next
- The Beverly Hills Hotel, Los Angeles, just before sunset.
- THE EAGLES - Hotel California
- Oasis - (What's The Story) Morning Glory
- BOB DYLAN - The Freewheelin' Bob Dylan
- A star ornament that formed part of the sign for the Sinbad Motel on Biscayne Boulevard in Miami.
- REM - Automatic For The People
- Two men passing each other on Benwick Street in London.
- Oasis - (What's The Story) Morning Glory
- The self-immolation of a Buddhist monk, in Saigon.
- RAGE AGAINST THE MACHINE - Rage Against The Machine
- A section of Raphael's painting The School of Athens.
- GUNS N' ROSES - Use Your Illusions 1991
- 19th-century oil painting of an elderly man carrying a bundle of sticks.
- LED ZEPPELIN - IV/Untitled
- Alain Delon in the 1964 film L'insomnie.
- THE SMITHS - The Queen Is Dead
- A graffiti'd school desk.
- ALICE COOPER - School's Out
- A stencil painting of a hand holding a heart shaped grenade.
- GREEN DAY - American Idiot
- The Great sphinx Of Giza wearing sunglasses.
- KISS - Hot In The Shade
- 22) Moylun Castle in County Westmeath, Ireland.
- U2 - The Unforgettable Fire
- 23) A 15th Century Ethiopian painting of St George.
- PAUL SIMON - Graceland
- Cupid having a cigarette break.
- 25) A red baseball cap hanging out of the back pocket of a man's jeans.
- BRUCE SPRINGSTEEN & THE E STREET BAND - BORN IN THE USA

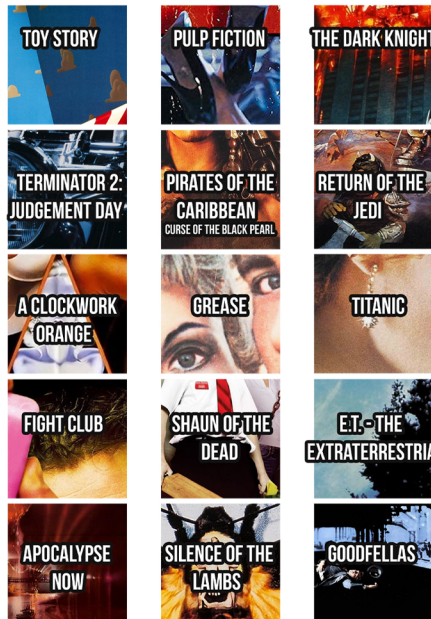


BIOPICS

MATCH THE ACTOR TO THE REAL LIFE PERSON THEY PLAYED AND THEN NAME THE BIOPIC MOVIE THEY DID IT IN...



CAN YOU NAME THE FILM FROM THE CLOSE UP OF ITS POSTER NAME THE FILM POSTER



CHARACTER CONNECTIONS

Name the films from the characters that the actors have played in other films or TV shows
 If the clue was "Travis Bickle - Robin Hood - James Bond - Terry Benedict" then the answer would be The Untouchables as it starred:
 - Robert Downey (who played Travis Bickle in Taxi Driver)
 - Kevin Costner (who played Robin Hood in Robin Hood Prince Of Thieves)
 - Sean Connery (who played James Bond)
 - Andy Garcia (who played Terry Benedict in Ocean's 11/12/13)

- 1) WOLVERINE - CATWOMAN - BORAT - MAXIMUS LES MISERABLES
- 2) HEISENBERG - WOODY - JASON BOURNE - SAM MALONE SAVING PRIVATE RYAN
- 3) JOHNNY UTAH - LOVEJOY - GREEN GOBLIN - THEON GREYJOY JOHN WICK
- 4) ELLER RIPLEY - ELWOOD BLUES - PHIL CONNORS - BO PEEP CUSTABER
- 5) CHARLIE CHAPLIN - JEFFREY "THE DUDE" LEBOWSKI - EMMA WOODHOUSE - JULES WINNFIELD IRON MAN
- 6) TYLER DURDEN - MR FOX - CARROLL SHELBY - TINKER BELL OCEAN'S ELEVEN (12 AND 13)
- 7) TONY MONTANA - COLONEL KURTZ - WALTER HOBBS - LIEUTENANT KILGORE THE GODFATHER
- 8) MR BEAN - HANS GRUBER - GEORGE VI - RICK GRIMES LOVE ACTUALLY
- 9) JOHN MCLEAN - MR PINK - PRESIDENT OF THE USA - BATMAN ARMAGEDDON
- 10) MR ROBOT - PETER BEALE - AUSTIN POWERS - BEATRIX POTTER BOHEMIAN RHAPSODY
- 11) JERRY MAGUIRE - JIM MORRISON - ANDY DUFRESNE - PRINCIPLE STRICKLAND TOP GUN
- 12) JAKE BLUES - MOZART - SGT. ODBALL - REN MCCORMACK ANIMAL HOUSE
- 13) ALEX DELARDE - THE QUEEN - LAWRENCE OF ARABIA - HOBSON CALIGULA
- 14) CAPTAIN HILTS - BUTCH CASSIDY - BONNIE PARKER - DR. KILDARE TOWERING INFERNO
- 15) WILL HUNTING - FRIDA KAHLO - SEVERUS SNAPE - EARL HICKEY DOGMA



WWW.BATHROOMWALL.COM