



**BATHROOM  
WALL T-SHIRTS**

**BRIDE OF  
APOCALYPSE  
ACTIVITY BOOK**

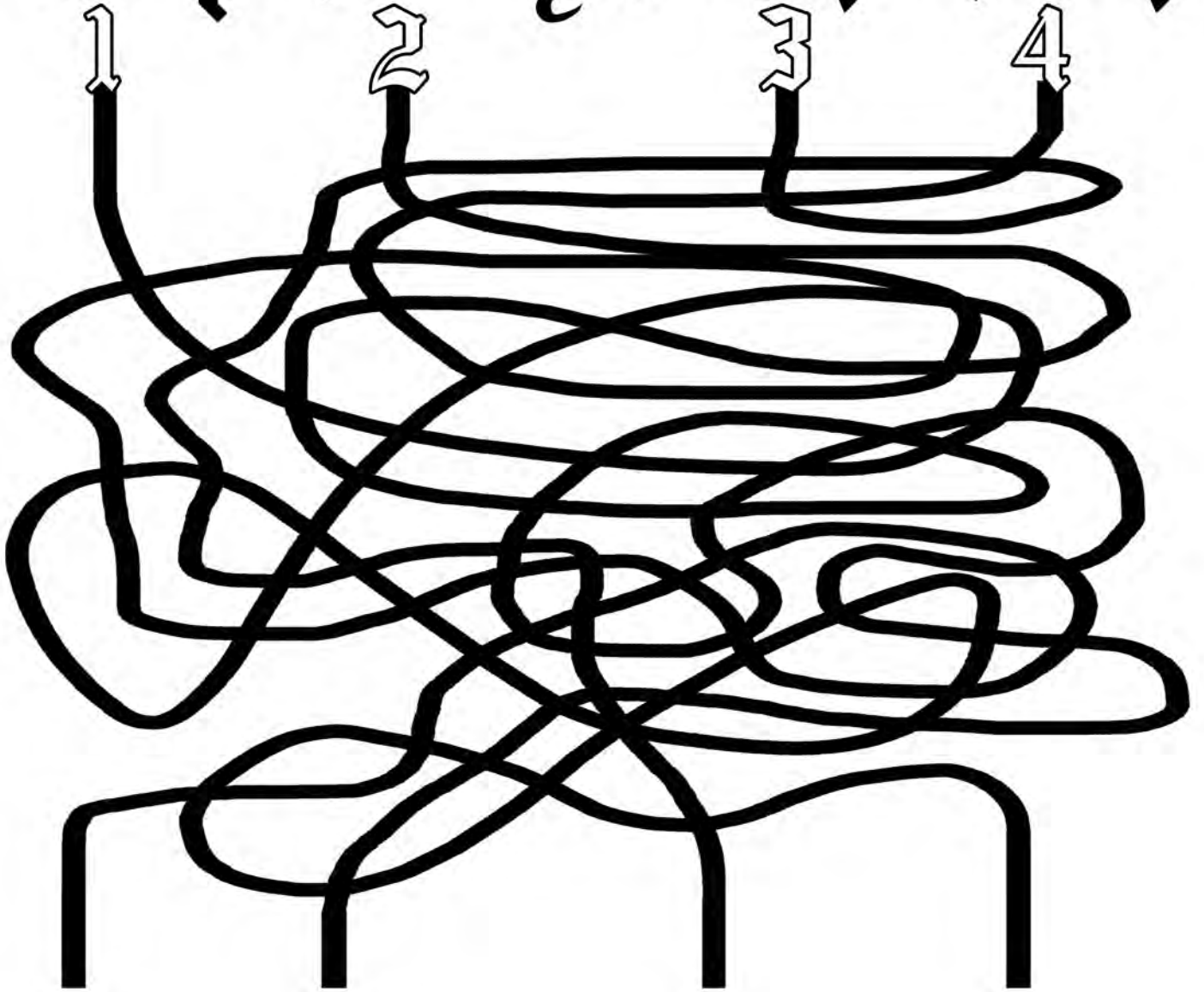
**WWW.BATHROOMWALL.COM**

someone is going to be in trouble if Lemmy doesn't get his bottle of Jack back!!

**BATHROOM WALL T-SHIRTS**



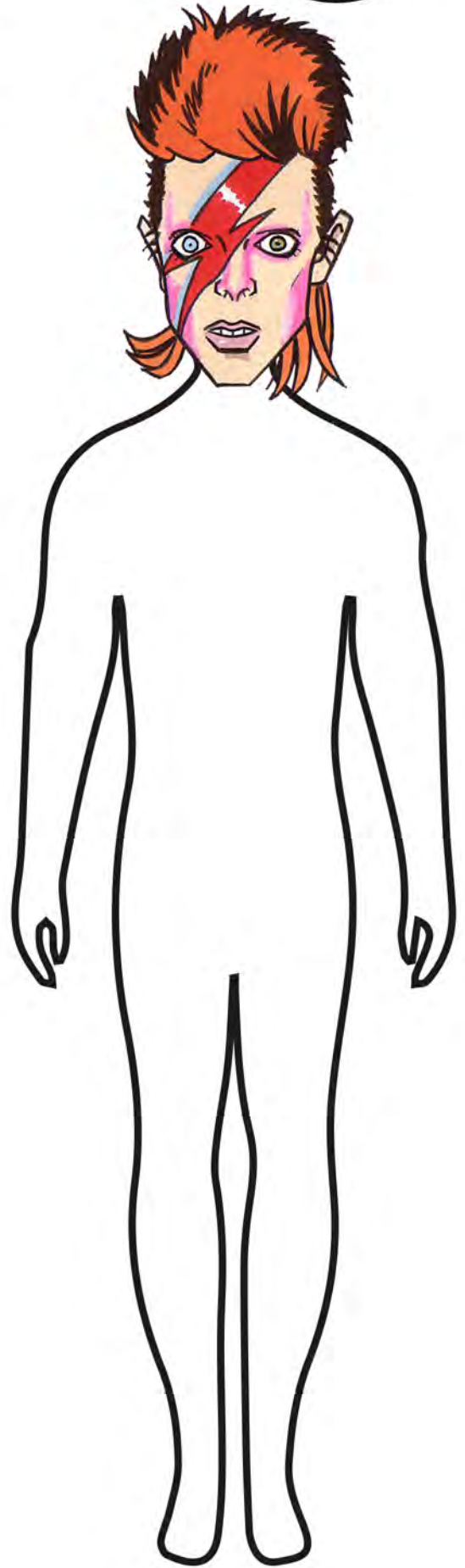
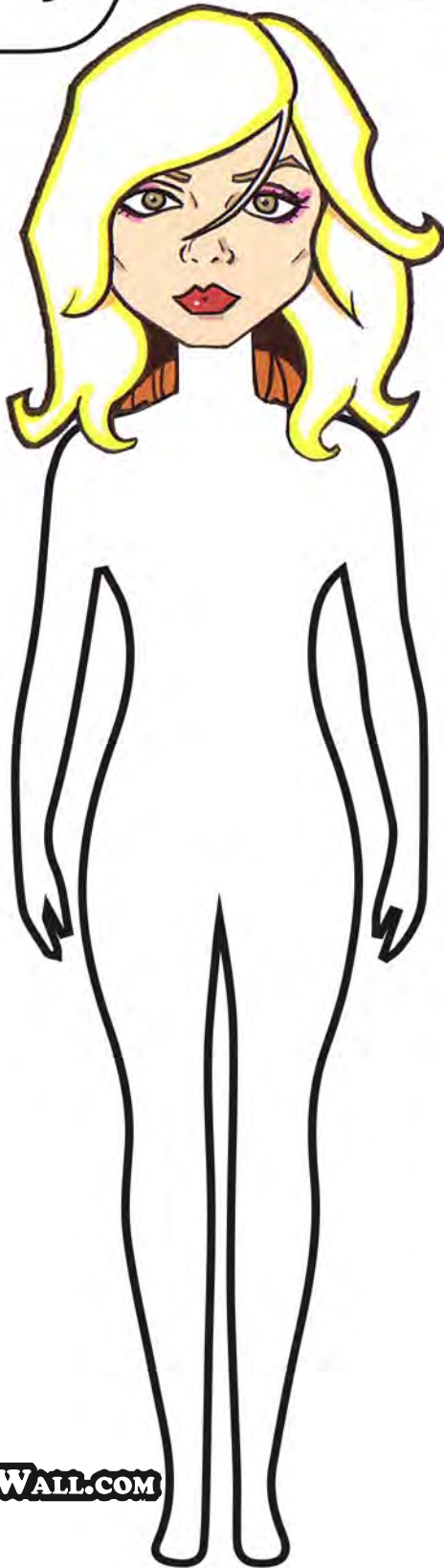
# Help Lemmy find his Jack!!



[www.BATHROOMWALL.COM](http://www.BATHROOMWALL.COM)

# DRESS DAVID & DEBBIE

BATHROOM  
WALL T-SHIRTS



# TEXAS CHAINSAW COLOURING

[WWW.BATHROOMWALL.COM](http://WWW.BATHROOMWALL.COM)

BATHROOM  
WALL T-SHIRTS



# ROCKY VS APOLLO CRAYON

[WWW.BATHROOMWALL.COM](http://WWW.BATHROOMWALL.COM)

**BATHROOM  
WALL T-SHIRTS**



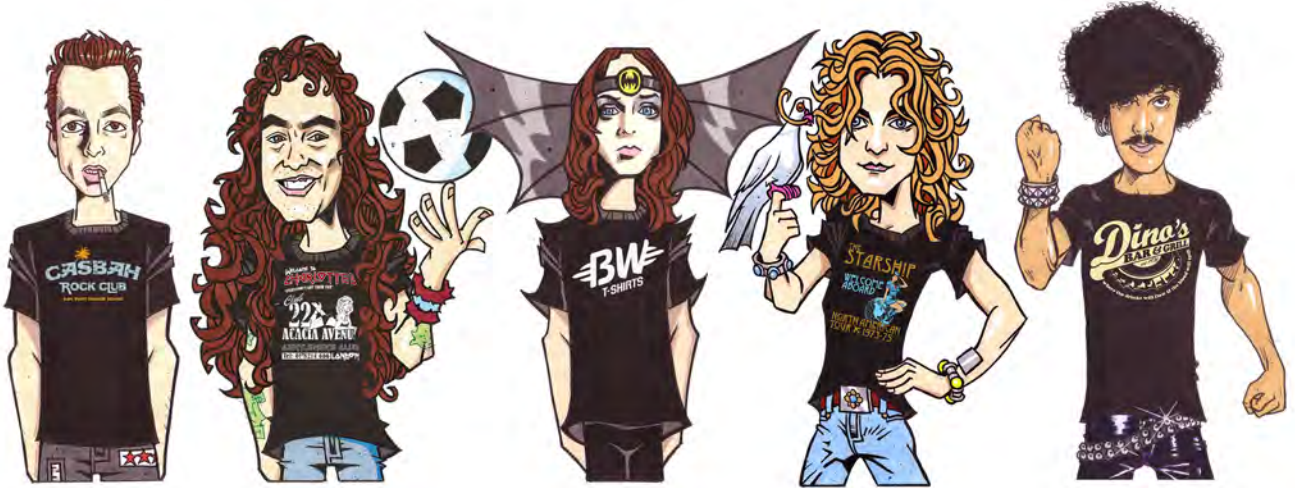
# RETURN OF THE COLOURING

[WWW.BATHROOMWALL.COM](http://WWW.BATHROOMWALL.COM)

**BATHROOM  
WALL T-SHIRTS**



# MATCH THE ROCK STARS TO THE TEAMS THEY SUPPORT



# ROCK N' ROLL CONNECTIONS

## just tell us what the links are...

- A defunct word for a person of mixed-race
- the most prolific killer in the world
- what Freud called the instinct energy or force of the id
- congenital absence of any pigmentation or colouration in a person, animal or plant

- Bernie Torme
- Brad Gillis
- Jake E Lee
- Gus G

- U2
- Rammstein
- ZZ Top
- Kings X

- Iron Butterfly
- Thin Lizzy
- Blood, Sweat and Tears
- Humble Pie

- The Velvet Underground
- The Doors
- Steppenwolf
- Silverchair

- Faster & Louder (The Dictators)
- Broken Radio (Jesse Malin)
- Disorder In The House (Warren Zevon)
- Street Hassle (Lou Reed)

- A Little Help from My Friends (Joe Cocker)
- Woke Up This Morning (Alabama 3)
- Way Down in the Hole (Tom Waits)
- Who Are You (The Who)

- Delilah (Queen)
- Lucifer Sam (Pink Floyd)
- Martha My Dear (The Beatles)
- Devil Woman (Cliff Richard)

- (I'm Gonna) Love Me Again (Elton John)
- Streets of Philadelphia (Bruce Springsteen)
- Things Have Changed (Bob Dylan)
- Theme From Shaft (Isaac Hayes)

- Be Chrool To Your Scuel (Twisted Sister)
- Jesus Christ Pose (Soundgarden)
- You're All I Need (Motley Crue)
- Oh, Pretty Woman (Van Halen)





# TIGER KING WORDSEARCH



|   |   |   |   |   |   |   |   |   |   |   |   |   |   |   |   |   |   |   |   |   |   |
|---|---|---|---|---|---|---|---|---|---|---|---|---|---|---|---|---|---|---|---|---|---|
| A | T | L | O | T | S | O | F | G | U | N | S | J | E | F | F | L | O | W | E | S | V |
| S | J | A | C | K | W | G | N | I | R | W | O | R | B | E | Y | E | F | Y | I | S | B |
| R | D | O | C | A | N | T | L | E | S | E | X | P | E | S | T | B | Z | N | B | I | M |
| E | O | I | B | Y | O | R | F | A | O | E | M | I | L | Y | O | J | O | N | M | P | U |
| K | L | Q | A | O | K | A | R | J | J | O | S | H | L | U | C | Y | O | N | O | F | R |
| N | L | I | G | E | R | V | E | O | N | E | A | R | M | F | X | Y | Z | E | Z | L | D |
| O | I | D | F | P | X | I | D | E | C | D | F | Q | I | W | T | F | O | W | U | X | E |
| B | D | G | F | Y | E | S | A | Z | W | T | F | T | R | D | O | E | D | O | L | A | R |
| T | H | A | T | B | I | T | C | H | S | L | A | W | S | U | I | T | N | O | U | D | F |
| C | A | R | O | L | E | B | A | S | K | I | N | D | I | D | I | T | L | D | M | I | O |
| F | E | D | H | E | R | H | U | S | B | A | N | D | T | O | A | T | I | G | E | R | R |
| D | L | J | A | L | L | E | G | E | D | L | Y | R | E | G | N | I | W | S | T | O | H |
| G | D | O | Y | T | T | I | K | Y | T | T | I | K | E | R | E | H | F | E | H | L | I |
| N | O | H | G | A | R | O | L | D | W | A | Y | N | E | A | R | S | E | D | W | F | R |
| I | N | N | C | I | T | O | X | E | M | A | U | L | E | D | D | I | D | I | T | O | E |
| K | A | F | L | O | L | K | T | K | C | E | N | D | E | R | T | O | M | E | F | A | L |
| R | A | I | D | O | N | L | E | W | I | S | W | A | S | E | A | T | E | N | S | E | X |
| E | P | N | B | C | V | A | E | Q | E | C | E | M | I | R | C | U | R | T | N | O | N |
| G | M | L | L | O | I | H | T | F | G | E | U | C | S | E | R | T | A | C | G | I | B |
| I | A | A | U | V | R | O | H | P | B | A | T | S | H | I | T | C | R | A | Z | Y | F |
| T | T | Y | E | I | U | M | L | O | C | K | T | H | E | M | A | L | L | U | P | R | O |
| M | T | O | Y | D | S | A | T | W | E | N | T | Y | T | W | O | Y | E | A | R | S | X |

## FORWARDS - UP - DOWN - DIAGONAL - BACKWARDS

DOC ANTLE  
CAROLE BASKIN  
TRAVIS  
JOE  
EXOTIC  
SAFF  
SWINGER  
MURDER FOR HIRE  
FLORIDA  
TAMPA  
BIG CAT RESCUE  
OKLAHOMA

JOHN FINLAY  
ZOO  
HUSBAND  
DON LEWIS  
MAULED  
METH  
HERE KITTY KITTY  
TIGER KING  
PETA  
GAROLD WAYNE  
TEETH  
EYEBROW RING

ALLEGEDLY  
REDNECK  
LOTS OF GUNS  
ONE ARM  
NETFLIX  
LIGER  
WYNNEWOOD  
LAWSUIT  
  
TWENTYTWOYEARS  
JEFF LOWE  
ALLEGEDLY

**IF YOU FIND ANY EXTRA WORDS, IT IS PURELY COINCIDENTAL**

# NAME THE TV OPENING CREDITS



1 2



3 4



5 6



7 8



9 10



**you know all the front covers...  
but do you know their back covers?**



**1**



**2 3**



**4**



**5 6**



**7**



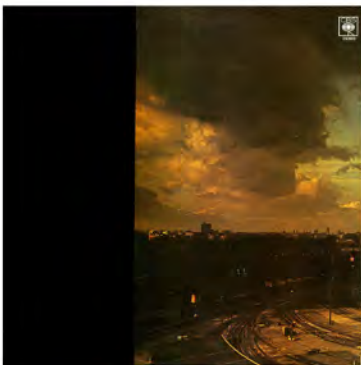
**8 9**



**10**



**11 12**



**13**



**14 15**

