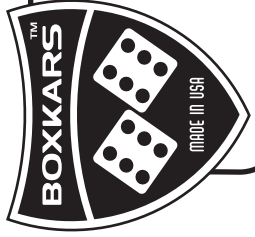
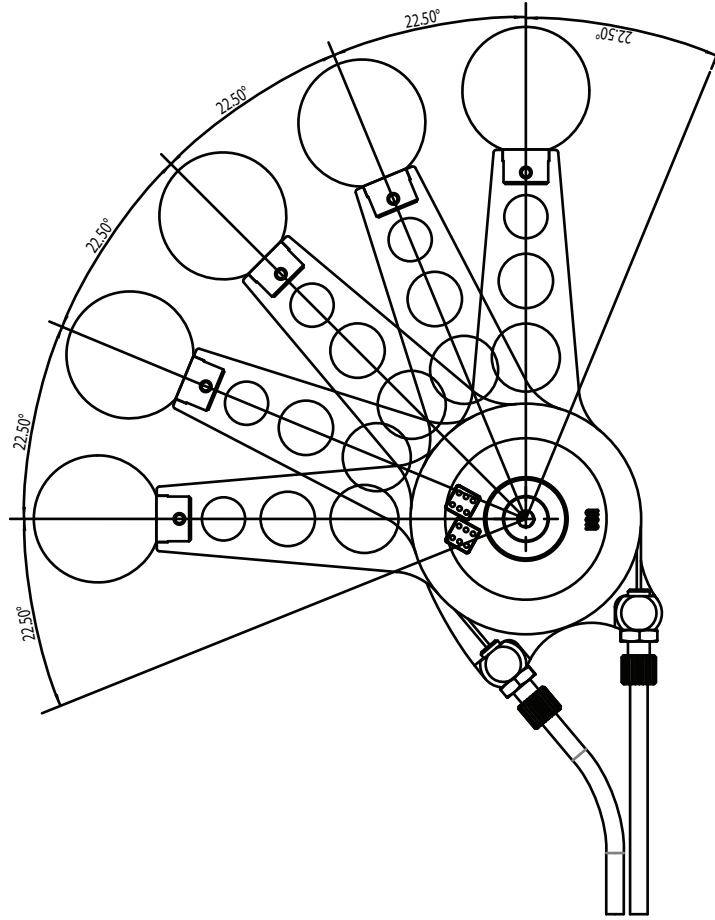


## CONFIGURATIONS

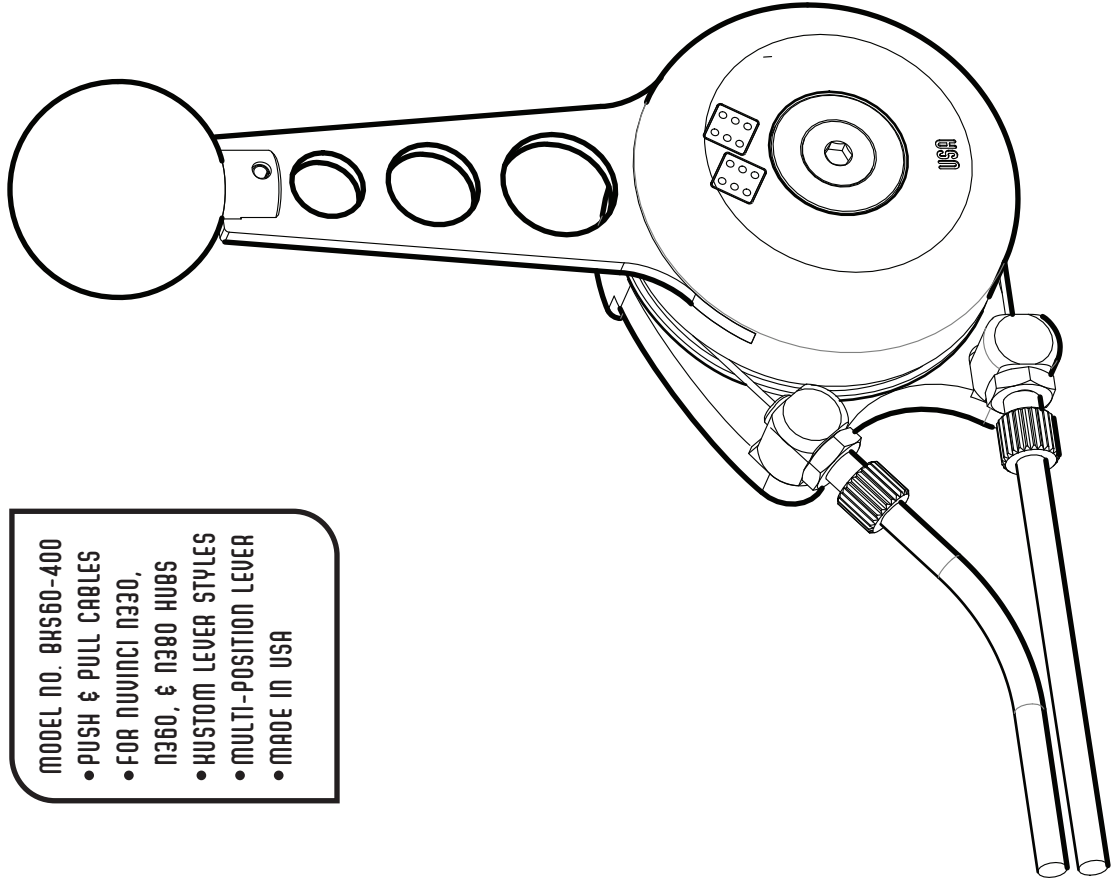
**VERY IMPORTANT:** Allow for 180 degrees of movement for the lever to get the full range of the NuVinci N330, N360, or N380 hub.

The lever should be vertical in the middle of the range. The lever position can be changed in 22.5 degree increments to mount the shifter at almost any angle as shown below.



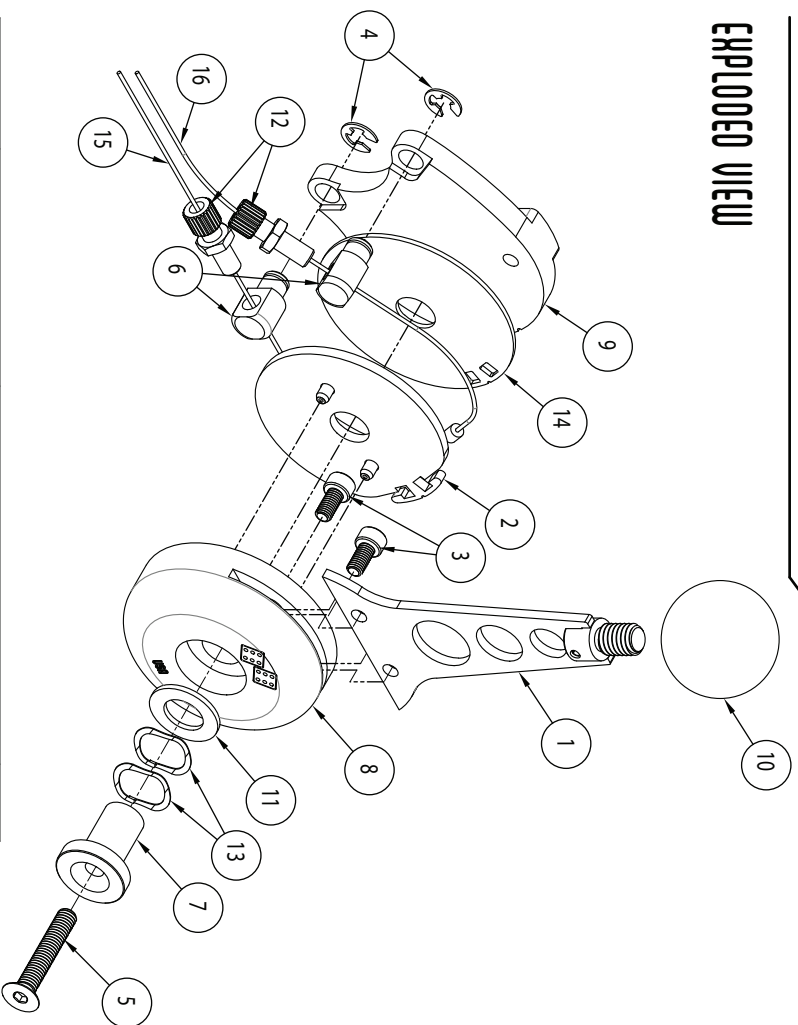
# SELECT-A-HUB 60-400

- MODEL NO. BHS60-400
- PUSH & PULL CABLES
  - FOR NUVINCI N330, N360, & N380 HUBS
  - CUSTOM LEVER STYLES
  - MULTI-POSITION LEVER
  - MADE IN USA

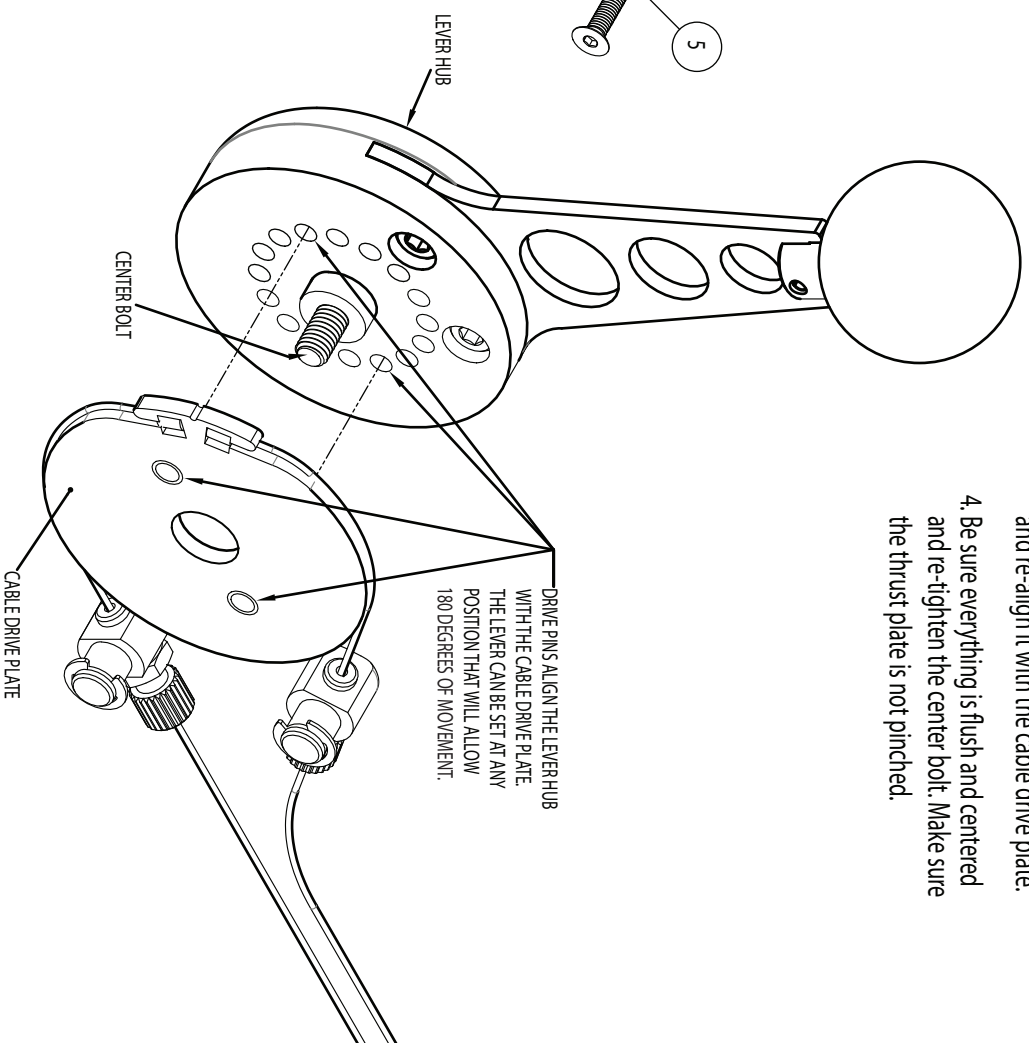


# BOXHARRS BHS60-400

## EXPLODED VIEW



ITEM NO.	PART NUMBER	DESCRIPTION	QTY.
1	60-A1010	SHIFT LEVER (STYLES VARY)	1
2	60-A1178	60-400 CABLE DRIVE PLATE	1
3	60-F1002	M5 X 10mm SHCS	2
4	60-F1003	6mm E-CLIP	2
5	60-F1008	M6 X 35mm FHCS	1
6	60-M1004	CABLE ADJUSTER BOSS	2
7	60-M1177	SPINDLE	1
8	60-M1179	60-400 LEVER HUB	1
9	60-M1180	60-400 SHIFTER BASE	1
10	60-R1002	STANDARD Ø 1.38" KNOB	1
11	60-R1005	THRUST WASHER	1
12	60-R1006	M6 CABLE ADJUSTER	2
13	60-R1007	WAVE WASHER	2
14	60-S1178	THRUST PLATE	1
15	60-400_cable1		1
16	60-400_cable2		1



## TO CHANGE THE LEVER ANGLE:

1. Completely loosen the center M6 bolt with a 5mm HEX wrench.
2. Pull the lever hub away from the cable drive plate.
3. Rotate the lever hub to the new position and re-align it with the cable drive plate.
4. Be sure everything is flush and centered and re-tighten the center bolt. Make sure the thrust plate is not pinched.