

# IONIC STYLER PRO

Hot Brush & Ceramic Flat Iron

## USER MANUAL



## IMPORTANT SAFETY INFORMATION

When using electrical appliances, especially when children are present, basic safety precautions should always be followed, including the following:

### READ THESE INSTRUCTIONS BEFORE FIRST USING YOUR APPLIANCE

**DANGER:** As with most electrical appliances, electrical parts are electrically live even when the switch is in the “OFF” position.

#### To reduce the risk of serious injury by electric shock:

1. Always unplug the appliance immediately after using.
2. Do not use while bathing.
3. Do not place or store appliance where it can fall or be pulled into a tub or sink.
4. Do not place in or drop into water or other liquid.
5. If appliance falls into water, unplug it immediately. Do not reach into the water.

**WARNING:** To reduce the risk of burns, electrocution, fire, or injury to persons:

1. An appliance should never be left unattended when plugged in.
2. Close supervision is necessary when this appliance is used by, on, or near children or individuals with certain disabilities.
3. Use this appliance only for its intended use as described in this manual. Do not use attachments not recommended by the manufacturer.
4. Never operate this appliance if it has been

INSTYLER.

- dropped, damaged, or dropped into water.
- 5. Keep the cord away from heated surfaces. Do not wrap the cord around the appliance.
- 6. Do not use an extension cord with this appliance.
- 7. The InStyler® Ionic Styler Pro is hot when in use. Do not let eyes and bare skin touch heated surfaces.
- 8. Do not use the appliance with any voltage converter.
- 9. Do not use this appliance near bathtubs, showers, basins or other vessels containing water.
- 10. Never use while sleeping.
- 11. Do not use outdoors or operate where aerosol (spray) products are being used or where oxygen is being administered.
- 12. Do not place this appliance directly on any surface while it is hot or plugged in.

**IMPORTANT:**

- 1. The appliance is not intended for use by persons (including children) with reduced physical, sensory or mental capabilities, or lack of experience and knowledge, unless they have been given supervision or instruction concerning use of appliance by a person responsible for their safety.
- 2. Children should be supervised to ensure that they do not play with the appliance.
- 3. If the supply cord is damaged, it must be replaced by manufacturer, its service agent or similarly qualified persons in order to avoid a hazard.



**WARNING:** Do not use this appliance near water. Do not use this appliance near bathtubs, showers, basins or other vessels containing water.



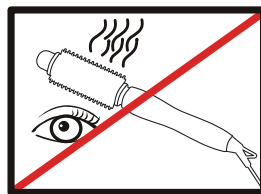
**SERVICING OF DOUBLE-INSULATED APPLIANCES**

In a double-insulated appliance, two systems of insulation are provided instead of grounding. No grounding means is provided on a double-insulated appliance, nor should a means for grounding be added to the appliance. Servicing a double-insulated appliance requires extreme care and knowledge of the system, and should only be done by qualified service personnel. Replacement parts for a double-insulated appliance must be identical to the parts they replace. A double-insulated appliance is marked with the words “DOUBLE INSULATION” or “DOUBLE INSULATED”. The symbol (square within a square) may also be marked on the appliance.

This appliance has a polarized plug (one blade is wider than the other). As a safety feature, this plug will fit in a polarized outlet only one way. If the plug does not fit fully in the outlet, reverse the plug. If it still does not fit, contact a qualified electrician. Do not attempt to defeat this safety measure.

For safety, turn the ON/OFF switch off and unplug after and when not in use.

**SAVE THESE INSTRUCTIONS. FOR HOUSEHOLD USE ONLY.**



**CAUTION:  
THIS PRODUCT CAN  
BURN EYES**



**KEEP AWAY FROM  
CHILDREN**

## Features



## Basic Directions

1. Plug in the InStyler® Ionic Styler Pro
2. See “ON/OFF SWITCH WITH 2 HEAT SETTINGS” section on page 7.
 

*Note: It will take approximately 1 minute for the InStyler® Ionic Styler Pro to be ready to use after turning it on.*
3. Use on dry hair only.
4. Brush the hair through entirely with the InStyler® Ionic Styler Pro to provide smoother passes, avoid tangles, and to achieve a smoother, shinier, and softer style.
5. Divide hair into sections and brush through again, slowly. Roll the brush through each section to create maximum fullness, body, and volume. Do not let the hair twist around the brush, instead continuously roll the brush through the hair.
6. Since the heat is inside of the brush barrel, use your free hand to cup the hair and hold it as close to the barrel as possible. **Make sure to only touch the cool touch bristles. Do not touch the barrel.**
7. While getting used to the new technology, start with small sections till you become more comfortable. Smaller sections will result in a tighter curl, while larger sections will result in a looser curl. Smaller sections will also help to avoid tangles.

## ON/OFF SWITCH WITH 2 HEAT SETTINGS

Turn the switch on, and select the temperature setting for your preference.



- HIGH** Best for normal to thick hair; or hair that is naturally very wavy or curly.
- LOW** Best for thin or damaged hair; or hair that is highly treated or colored.
- OFF** Turns unit off.

**Note:** The red indicator light blinks until set temperature is reached. Start using once the indicator light stays on.

## For safety, turn the ON/OFF switch off and unplug after use.

The red indicator light indicates the InStyler® Ionic Styler Pro is turned on for either Low or High. The blinking indicator light indicates the temperature has not reached the set temperature. If you find the unit does not turn on, unplug and plug it back in.

## OPEN/CLOSING THE BARREL

Open the barrel for straightening, close the barrel to use as a heated round brush.



Slide Down to Open



Slide Up to Lock

## To Avoid Tangling

Make sure to brush through the entire head of hair before styling – Brush through each subsection individually as many times as necessary until it effortlessly passes through the hair.

When styling, make sure to slide through the hair first prior to rolling: slide first and then roll a little, slide through again and then roll a little until completely through the hair section.

When curling, keep the barrel vertical and avoid going horizontal.

## IF YOUR HAIR TANGLES

Follow these steps to detangle your hair:

1. Turn the unit off and unplug it.
2. Do not panic and pull or tug on the tool. That will only make the tangle worse.
3. Start by unrolling the tool in the opposite direction that caused the tangle.
4. If unrolling the tool the opposite direction doesn't fix the problem, use a comb to lift and pick out strands that are snug and tangled. This will create space and freedom for your hair to become unwrapped from the tool.
5. Do not attempt to pick the hair out with your fingers or nails between bristles. **Use a comb edge, as the unit is hot.**

## Care

- Always unplug the InStyler® Ionic Styler Pro and let it cool down before cleaning.
- Do not rinse with water. It may damage the InStyler® Ionic Styler Pro.
- To clean the nylon bristles, wipe with a moistened cloth. Do not use products that include benzene and/or paint thinner for it may damage the InStyler® Ionic Styler Pro.
- To clean the ceramic barrel, use cotton swabs. Be cautious not to leave the cotton fibers in the barrel.
- Clean often to avoid collecting dust and hair.
- Open barrel to easily clear hair from the barrel.

## Storage

Be sure to check the following before storing the InStyler® Ionic Styler Pro:

- Turn the ON/OFF switch off, and unplug.
- Be sure the ceramic barrel has cooled off.
- Do not wrap cord around the InStyler® Ionic Styler Pro.

## Straightening

### Using the Open Barrel

- Unlock the safety by sliding the button to open.
- Once the tool has been opened, take large or small sections depending on hair texture and desired style.
- Holding the section away from your head, make room for the split barrel to surround your hair as you would with a flat iron. Do not be afraid to get close to the scalp. The cool touch bristles will protect you from burns and ensure perfect straight hair from root to ends.
- After inserting the section into the open smoothing iron, slowly glide the tool at a steady speed till you are through to the ends.

## Basic Curl

- With the barrel closed, brush through the section until passing through with the brush is effortless
- Starting near the bottom half of the section, make an s-wrap or c-wrap with the section of hair around the barrel.
- Slide through the hair and roll the hair around the barrel. Repeat sliding through the hair and rolling the hair around the barrel until the barrel has gone through to the ends.

## Basic Wave

- Starting near the bottom half of the section, make a c-wrap with the section of hair around the closed barrel. You can do this with the barrel on top or below the hair; depending on which direction you want to wave the hair.
- Cup the hair around the barrel using your free hand. Roll the barrel through to the ends of the hair continuing to cup the hair around the barrel as you roll.

## Flip Outs & Bend Ins

- Follow the “BASIC DIRECTIONS” and apply the InStyler® Ionic Styler Pro to the ends of the hair.
- Use your free hand to hold the hair around the barrel and roll only at the ends. Keep rolling to add shine and body to the ends of the hair.

## Adding Volume to the Crown

- Follow the “BASIC DIRECTIONS” and apply the InStyler® Ionic Styler Pro at the roots of the top section where additional volume is desired. Applying the other hand on the cool touch bristles will make this easier.

## Limited 1 Year Warranty

This warranty is for the original purchaser of the InStyler® Ionic Styler Pro, and is non transferable. Tré Milano, LLC warrants that InStyler® Ionic Styler will have no defects in material and workmanship under normal household usage for 1 year from the date of purchase. Keep the original sales receipt for proof of purchase to attain warranty provisions. Within a two year period from the date of purchase, Tré Milano, LLC will repair or replace, on it's own accord, any InStyler® Ionic Styler Pro or parts found to be defective. This warranty does not cover any shipping and handling charges which may incur. This warranty does not include any damages caused by accident, misuse, neglect, abuse, use on a voltage other than marked on the product, or use for commercial purposes.

If your InStyler® Ionic Styler Pro is found to be defective within the time period of this warranty, please contact the Tré Milano, LLC Customer Service Department Toll Free number **800-307-0078**. If the product is discontinued or no longer available, a replacement may be made with a similar product of equal or greater value. Any attempt to repair or service this product on your own will void the warranty.

# Arbitration Agreement

## IMPORTANT INFORMATION

THIS ARBITRATION AGREEMENT AFFECTS YOUR LEGAL RIGHTS AND REMEDIES BY PROVIDING THAT DISPUTES BETWEEN YOU AND TRE MILANO, LLC MUST BE RESOLVED THROUGH MANDATORY, BINDING ARBITRATION, RATHER THAN IN A COURT. PLEASE READ THIS AGREEMENT CAREFULLY. YOUR ACCEPTANCE OF THE TERMS OF THIS AGREEMENT SHALL BE EVIDENCED BY THE FIRST TO OCCUR OF: (1) YOUR OPENING OF ONE OR MORE OF THE INSTYLER PRODUCT UNITS PURCHASED OR RECEIVED BY YOU (COLLECTIVELY, THE "PRODUCT"), (2) YOUR OPENING OF ONE OR MORE OF THE INSTYLER ACCESSORY PRODUCTS PURCHASED OR RECEIVED BY YOU (COLLECTIVELY, THE "ACCESSORY PRODUCTS"), OR (3) YOUR RETAINING THE PRODUCT OR THE ACCESSORY PRODUCTS FOR MORE THAN TEN (10) DAYS AFTER PURCHASE OR RECEIPT. IF YOU DO NOT AGREE TO THE TERMS OF THIS AGREEMENT, YOU MUST RETURN THE PRODUCT AND/OR THE ACCESSORY PRODUCTS, AS THE CASE MAY BE, WITHIN TEN (10) DAYS OF RECEIPT AT NO COST TO YOU. YOU MAY RETURN THE PRODUCT AND/OR THE ACCESSORY PRODUCTS BY CALLING TRE MILANO AT 800-307-0078 AND REQUESTING A CREDIT RETURN AUTHORIZATION NUMBER. THIS ARBITRATION AGREEMENT COVERS ALL DISPUTES BETWEEN YOU AND TRE MILANO, LLC REGARDING BOTH THE PRODUCT AND THE ACCESSORY PRODUCTS.

1. **RESOLUTION OF CLAIMS OR DISPUTES.**

Any claim or dispute between you and Tré Milano, LLC (including any of Tré Milano, LLC's subsidiaries or affiliates, collectively "Tré Milano") arising out of or relating in any way to the purchase or use of the Product, the Accessory Products or this Agreement shall be resolved through final, binding arbitration. This mandatory arbitration obligation applies regardless of whether the claim or dispute involves a tort, fraud, misrepresentation, product liability, negligence, violation of a statute, or any other legal theory. Both you and Tré Milano specifically acknowledge and agree that you waive your right to bring a lawsuit based on such claims or disputes and that you waive your right to have such claims or disputes resolved by a judge or jury. Notwithstanding the foregoing, you have the right to seek relief in small claims court for claims or disputes within the scope of small claims jurisdictional limits.
2. **LIMITATION OF LEGAL REMEDIES.**

All arbitrations under this Agreement shall be conducted on an individual (and not a class-wide) basis, and an arbitrator shall have no authority to award class-wide relief. You acknowledge and agree that this Agreement specifically prohibits you from commencing arbitration proceedings as a representative of others or joining in any arbitration, litigation or other proceeding brought by any other person.
3. **ARBITRATION PROCEDURES.**
  - a. Before commencing any arbitration proceedings under this Agreement, you must first present the claim or dispute to Tré Milano by calling 800-307-0078 and asking for the Legal Department and allowing Tré Milano the opportunity to resolve the claim or dispute. If your claim or dispute is not resolved within sixty (60) days, you may commence arbitration proceedings in accordance with the terms of this Agreement.
  - b. The arbitration of any claim or dispute under this Agreement shall

be conducted pursuant to the American Arbitration Association's ("AAA") United States Commercial Dispute Resolution Procedures and Supplementary Procedures for Consumer-Related Disputes. These rules and procedures are available by calling AAA at 800-778-7879 or by visiting its web site at [www.adr.org](http://www.adr.org).

- c. The arbitration of any claim or dispute under this Agreement shall be conducted in the State of California and the County of Los Angeles; provided that if the parties do not agree on a location for the arbitration, then the AAA shall determine a reasonably convenient location.
- d. The arbitration of any claim or dispute under this Agreement shall be conducted by an arbitrator who is independent and impartial.
- e. The exchange of information and timing of the arbitration shall be supervised by the arbitrator and shall be in accordance with procedures provided by the arbitrator.
- f. The arbitration of any claim or dispute under this Agreement and the resolution or settlement thereof shall be confidential and shall not be disclosed by the parties to any third parties other than their respective professional representatives.
- g. Each party shall have the right, at their own expense, to be represented by an attorney (or other spokesperson if permitted by law) of their own choosing.
- h. All administrative expenses of arbitration proceedings commenced under this Agreement shall be divided equally between you and Tré Milano, except that: (a) if the claim or dispute that is the subject of the arbitration proceedings is less than ten thousand dollars (US \$10,000), you will be responsible for no more than one hundred twenty-five dollars (US \$125) in administrative expenses; (b) if the claim or dispute that is the subject of the arbitration proceedings is more than ten thousand dollars (US \$10,000) but less than seventy-five thousand dollars (US \$75,000), you will be responsible for no more than three hundred seventy-five dollars (US \$375) in administrative expenses; and (c) if the claim or dispute that is the subject of the arbitration proceedings is more than seventy-five thousand dollars (US \$75,000) or non-monetary, then you will be responsible for administrative expenses in accordance with the Commercial Fee Schedule provided by the AAA. You acknowledge and agree that each party shall pay the fees and costs of its own counsel, experts and witnesses.

#### 4. CHOICE OF LAW.

This Agreement shall be governed by the United States Federal Arbitration Act and the laws of the state of California.

#### 5. SEVERABILITY.

If any provision of this Agreement is declared or found to be unlawful, unenforceable or void, such provision will be ineffective only to the extent that is found unlawful, unenforceable or void, and the remainder of the provision and all other provisions shall remain fully enforceable.

#### 6. WAIVER OF DAMAGES.

Each of the parties hereby (a) irrevocably waives, to the maximum extent not prohibited by law, any right it may have to a trial by jury in respect of any proceeding directly or indirectly at any time arising out of, under or in connection with the purchase of the Product and the Accessory Products from Tré Milano or any transaction contemplated hereby or associated herewith; (b) irrevocably waives, to the maximum extent not prohibited by law, any right it may have to claim or recover in any such proceeding any special, exemplary, punitive or consequential damages, or any damages other than, or in addition to, actual damages.

# IONIC STYLER PRO

## Hot Brush & Ceramic Flat Iron

**Get even more tips & tricks on  
our website and social sites!**

Share your videos, tips, questions  
with other InStyler fans!

 instylerus

 instylerhair

[www.youtube.com/instylerhair](http://www.youtube.com/instylerhair)

 INSTYLER.

©2017 Trade Box, LLC. All Rights Reserved.  
InStyler® and the InStyler logo are registered  
trademarks of Trade Box, LLC.