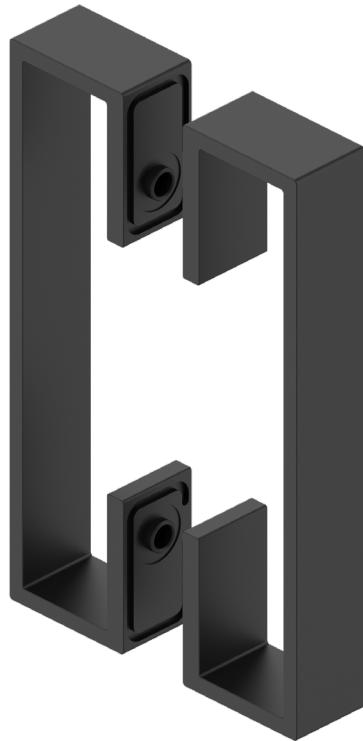
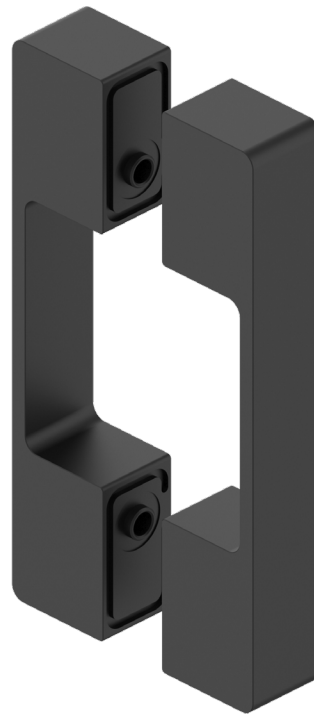


MOUNTING DOORGRIPS

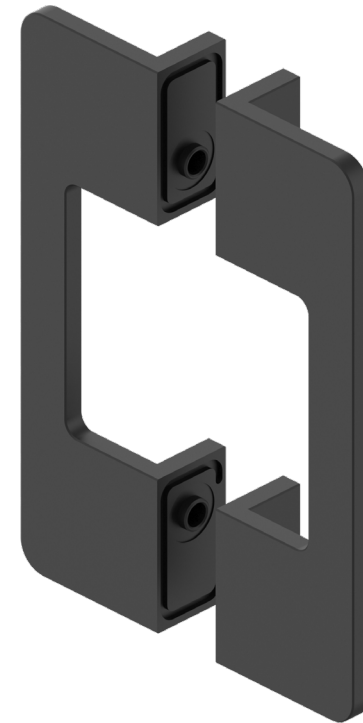
DG.08



DG.11



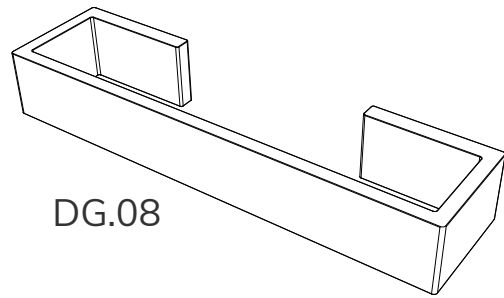
DG.12



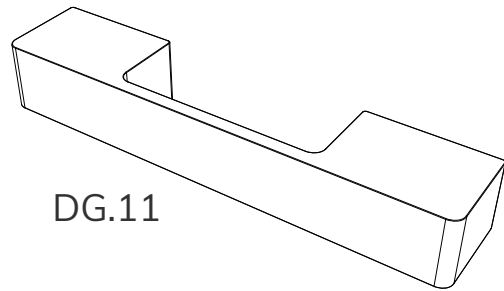
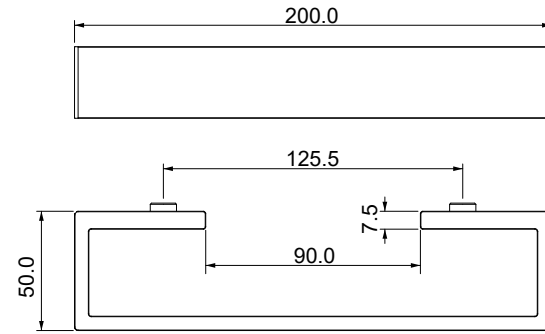
Patented technology

STEALTHPIVOT
By PortaPivot

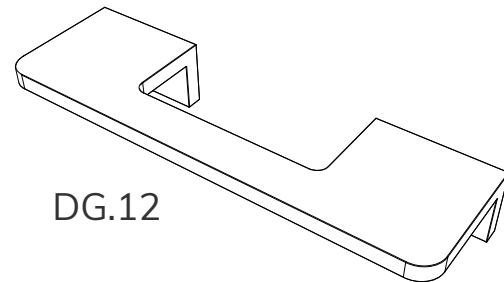
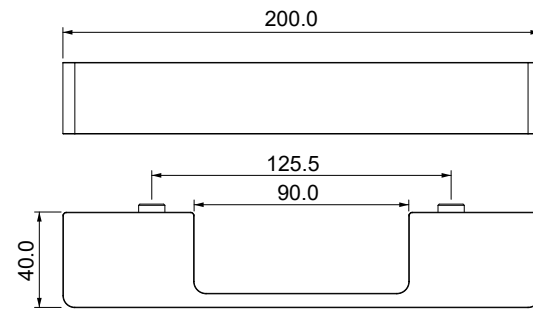
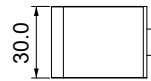
DOORGRIP DIMENSIONS



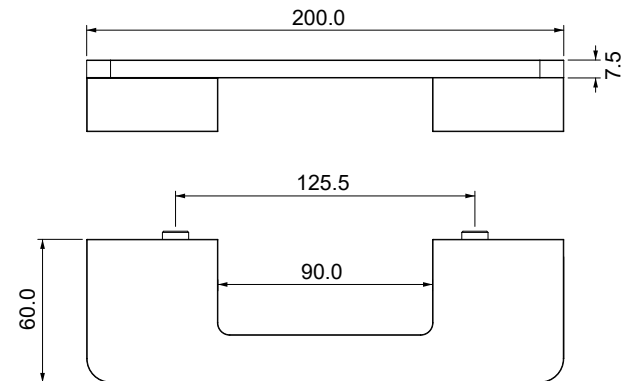
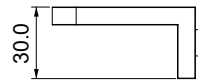
DG.08



DG.11



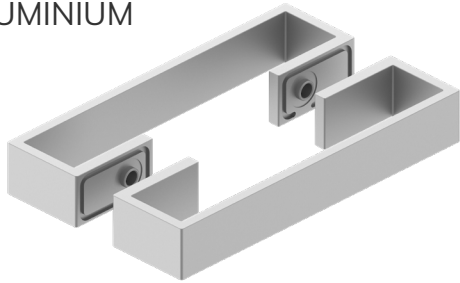
DG.12



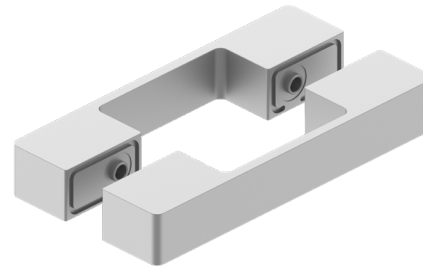
DOORGRIP COLORS

DG.08

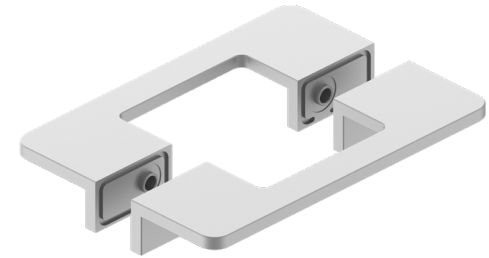
GREY ALUMINIUM



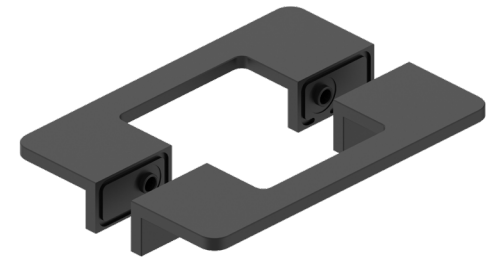
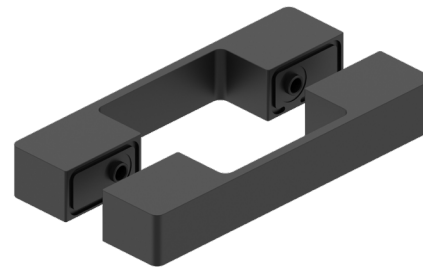
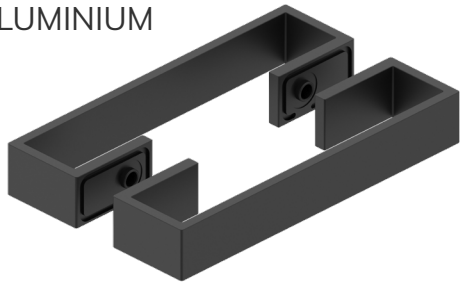
DG.11



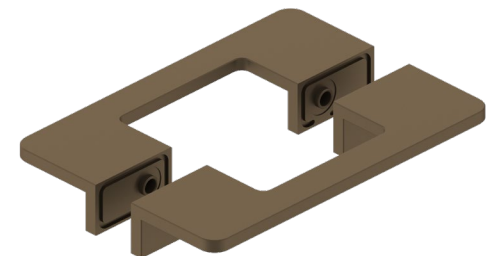
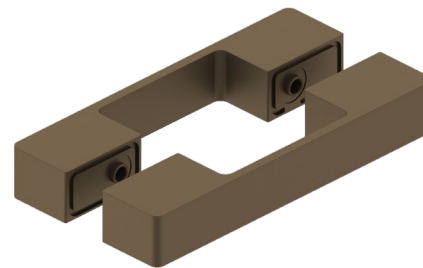
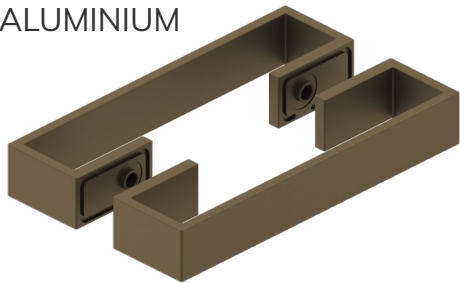
DG.12



BLACK ALUMINIUM



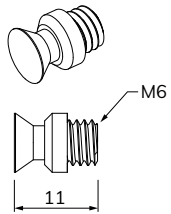
BRONZE ALUMINIUM



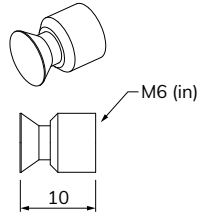
MOUNTING HARDWARE

Depending on the door leaf type and thickness, different parts are needed.

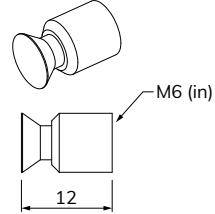
4 x DGVASTS



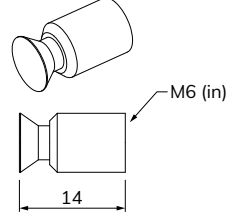
2 x DGVAS1



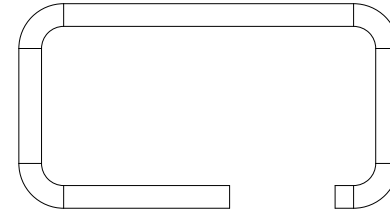
2 x DGVAS2



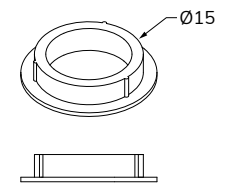
2 x DGVAS3



4 x EPDM isolator
Ø3 mm, L = 120 mm



4 x DLBLBUS



2 x DIN916 - M6 x 50 mm



2 x DIN916 - M6 x 45 mm



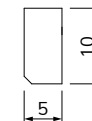
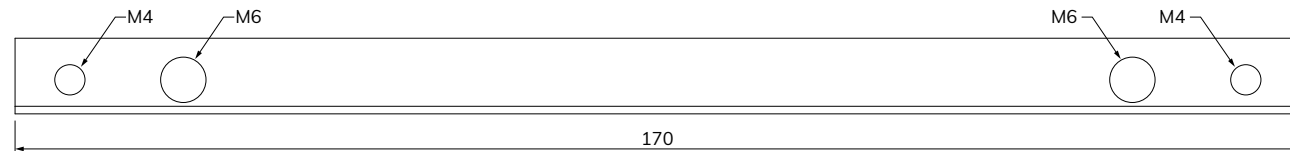
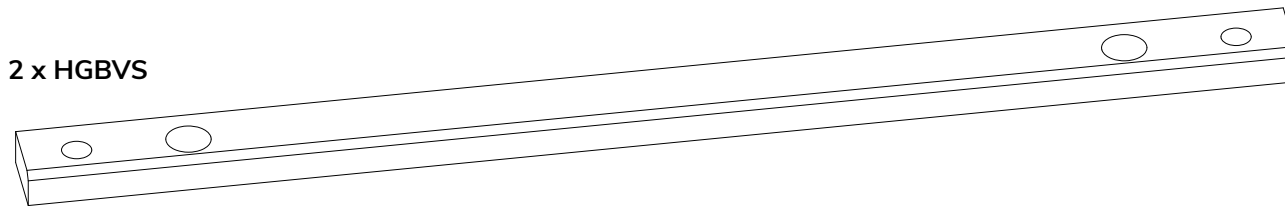
4 x DIN914 - M4 x 10 mm



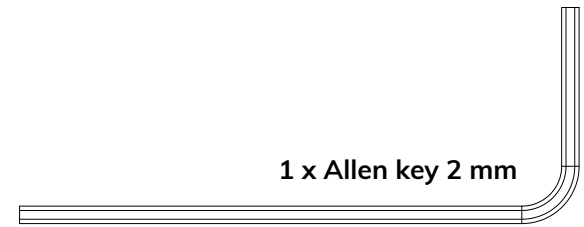
4 x ISO10642 - M4 x 8 mm



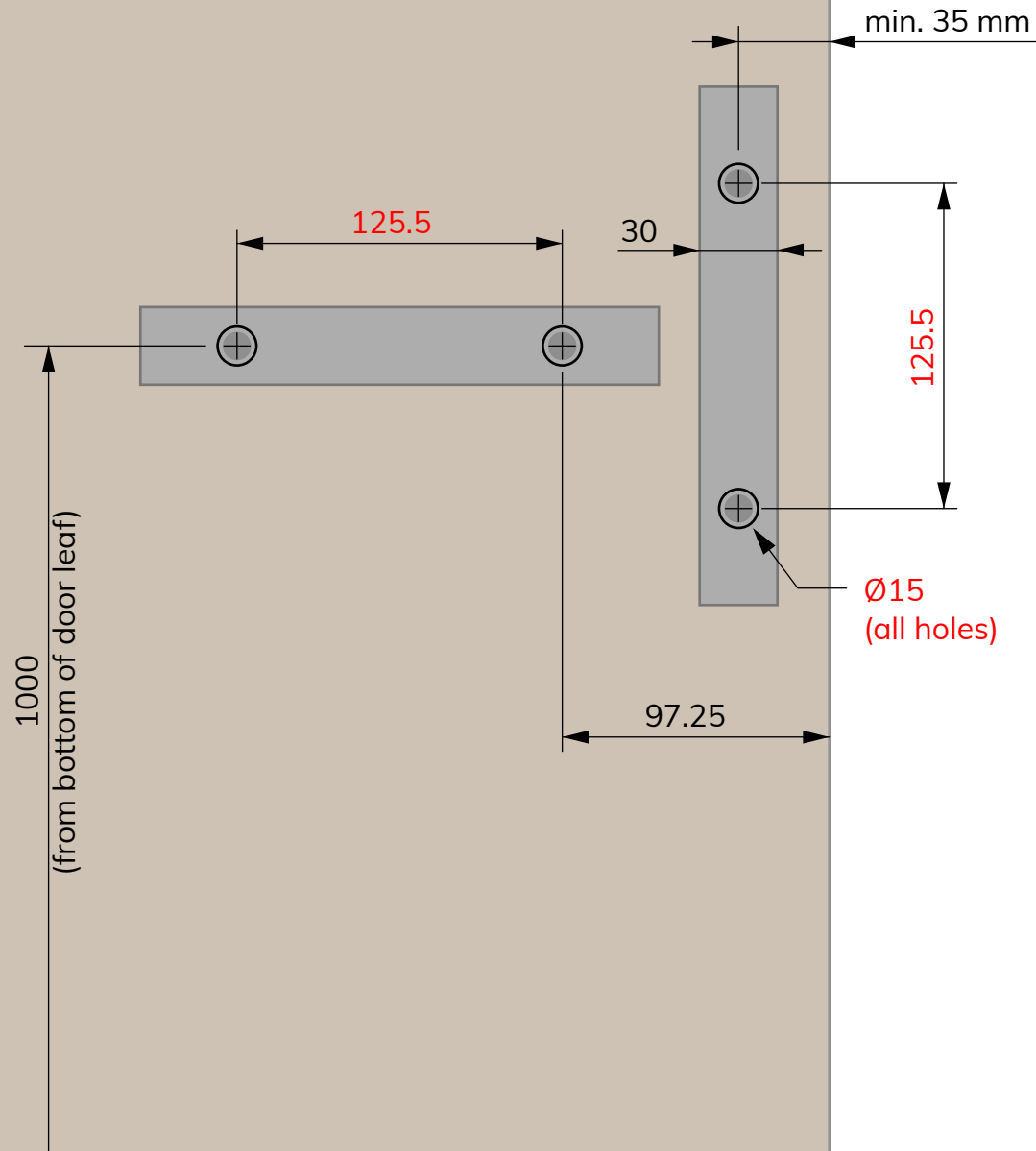
2 x HGBVS



1 x Allen key 2 mm



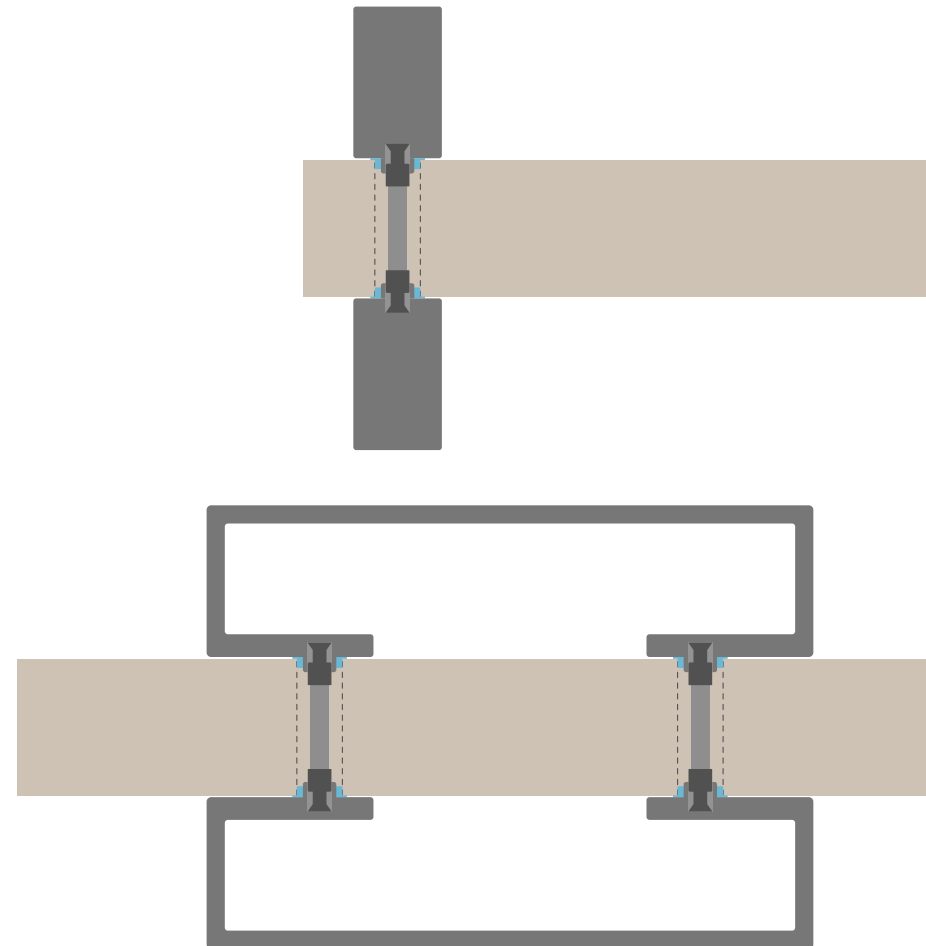
ADVISED DOORGRIP MOUNTING LOCATIONS FOR CUSTOM DOOR LEAF



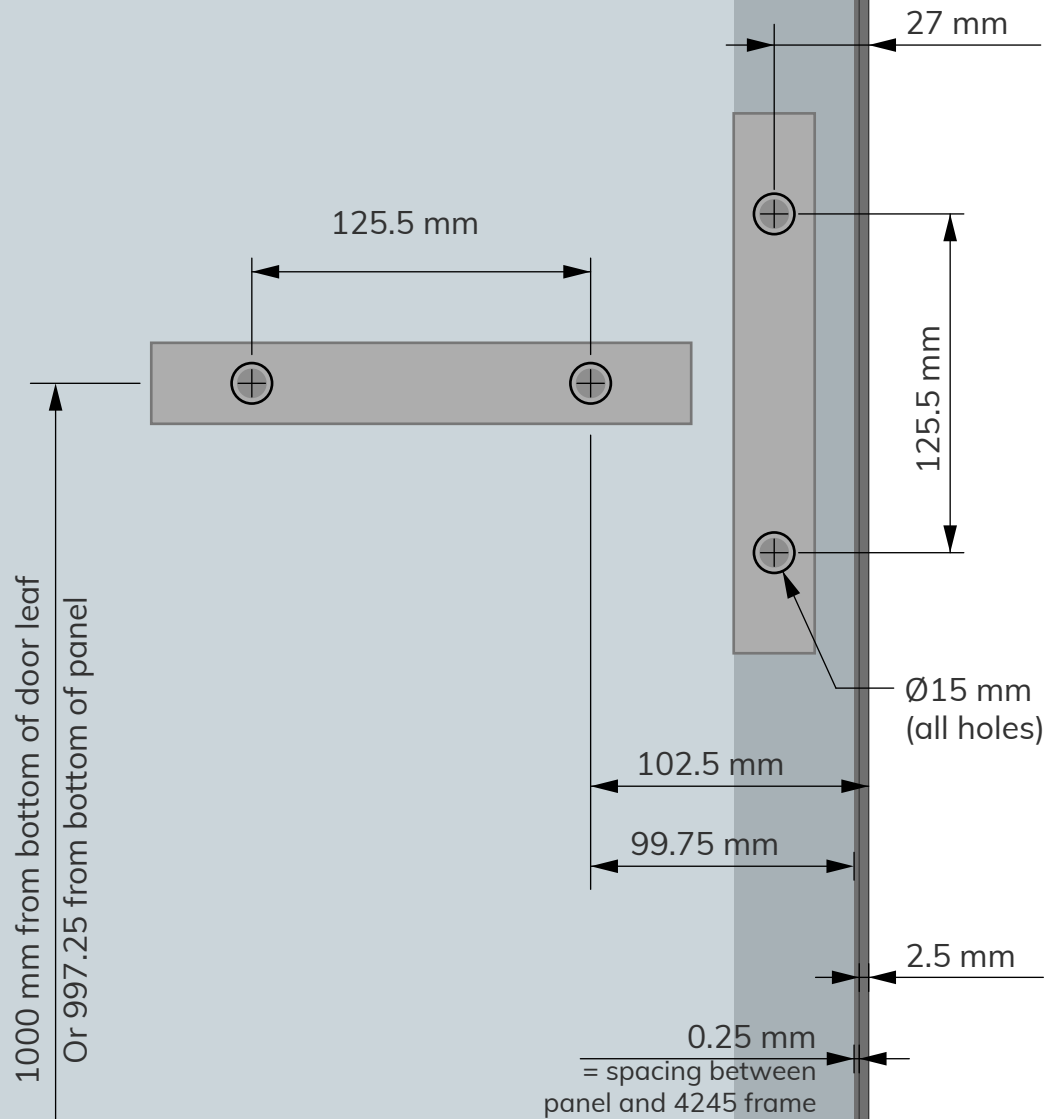
When using a custom door leaf, you can mount the door grip anywhere. We advise to mount the center of the door grip to be minimum 35 mm from the doorleafs edge.

The fixed dimensions are shown in red.

See page 9-11 for mounting instructions.



ADVISED DOORGRIP MOUNTING LOCATIONS FOR PORTAPIVOT 4245



For Portapivot 4245, you can mount the doorgrip on top of the underlying frame, or on the finishing panels .

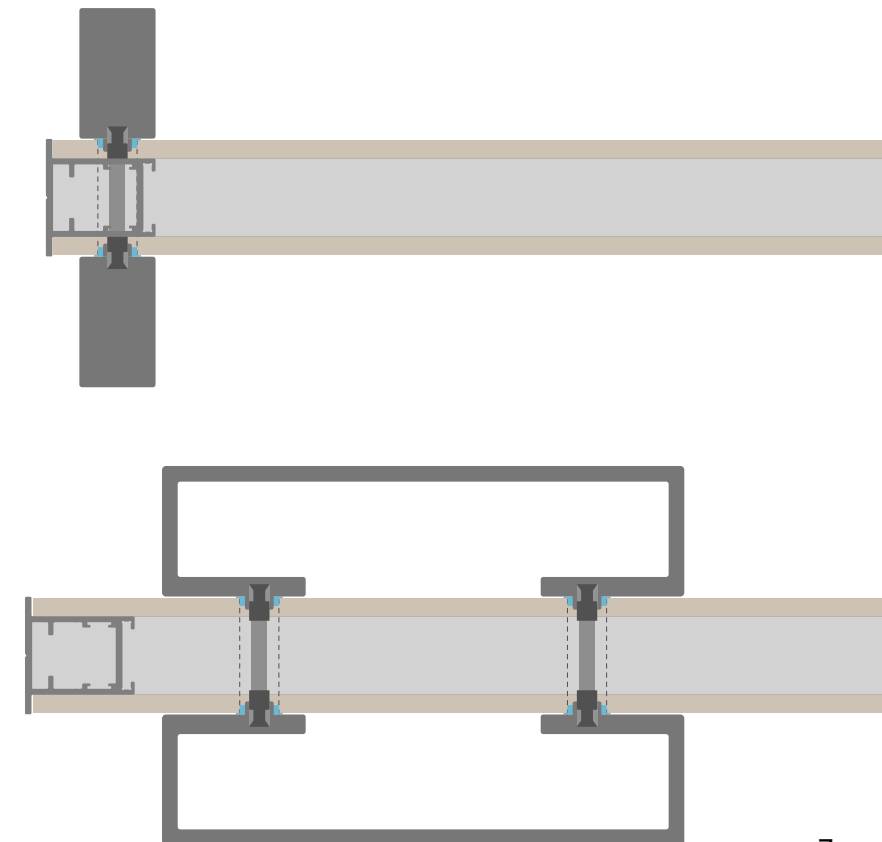
On top of the frame we advise to mount the center of the doorgrip 27 mm away from the edge.

On the panel you can mount the doorgrip anywhere you like. Shown is our advised setup.

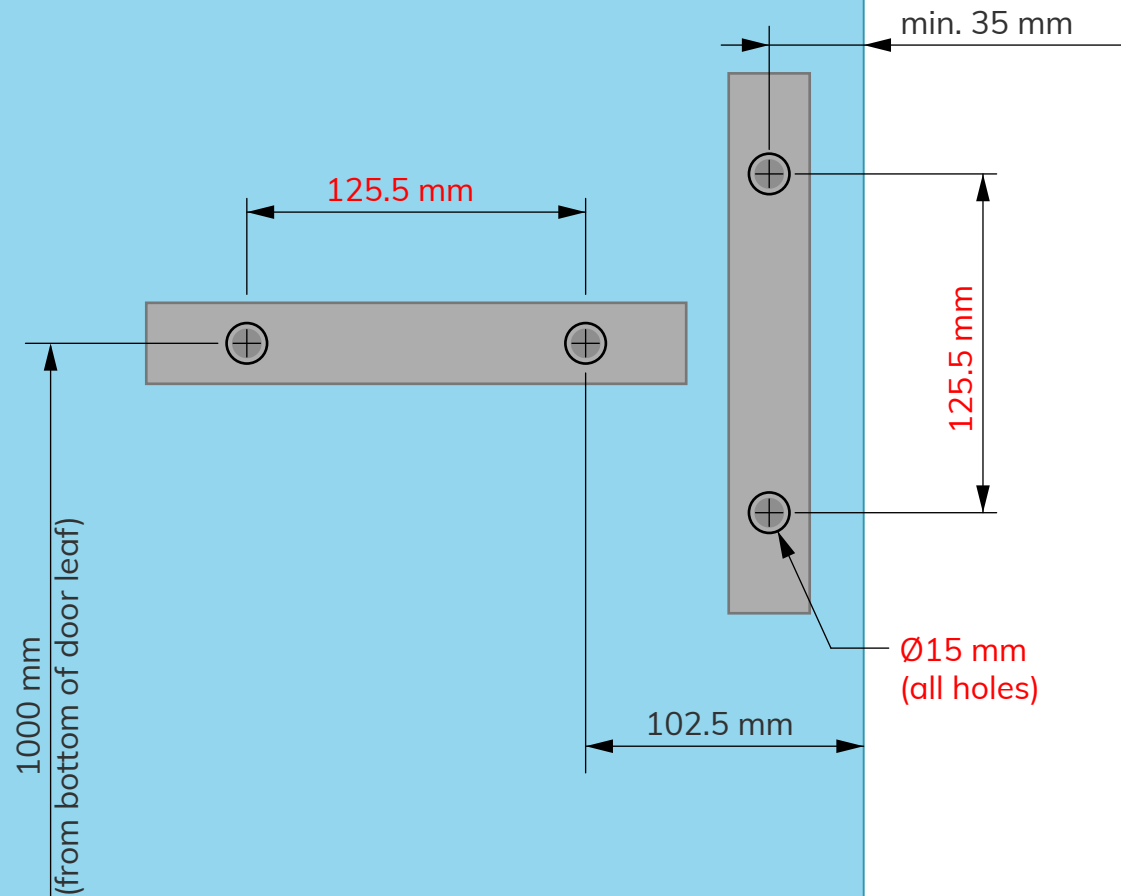
We do not advise to mount this doorgrip when using glass as a finishing material.

It is very hard to perfectly align the mounting holes in both panels and it will not be dust- or airtight!

See page 9-11 for mounting instructions.



ADVISED DOORGRIP MOUNTING LOCATIONS FOR PORTAPIVOT GLASS

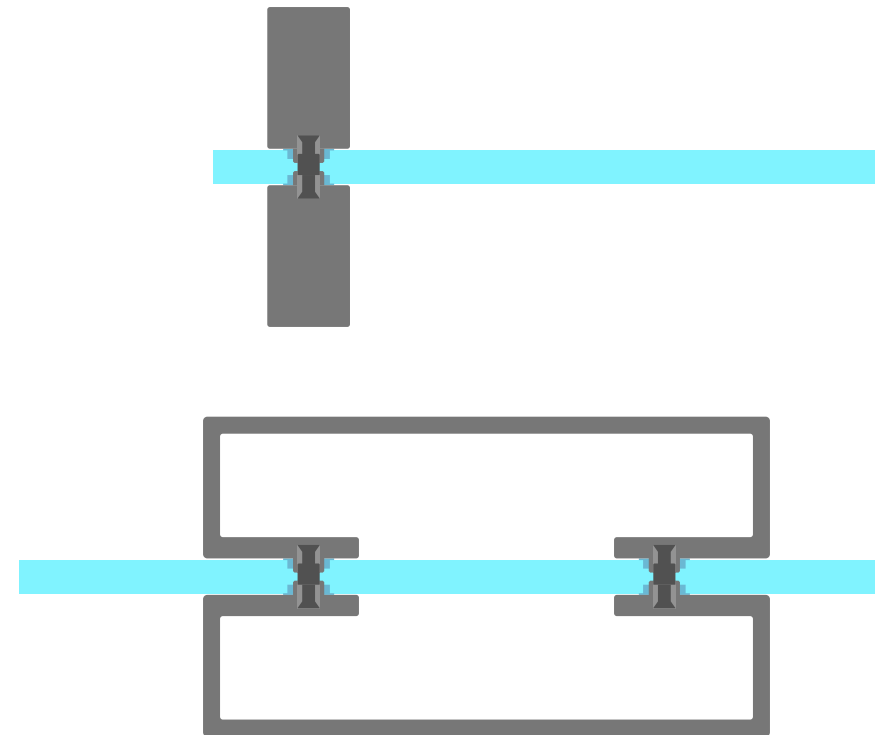


For Portapivot Glass, you can mount the door grip anywhere you like.

We advise to mount the center of the door grip to be minimum 35 mm from the doorleafs edge.

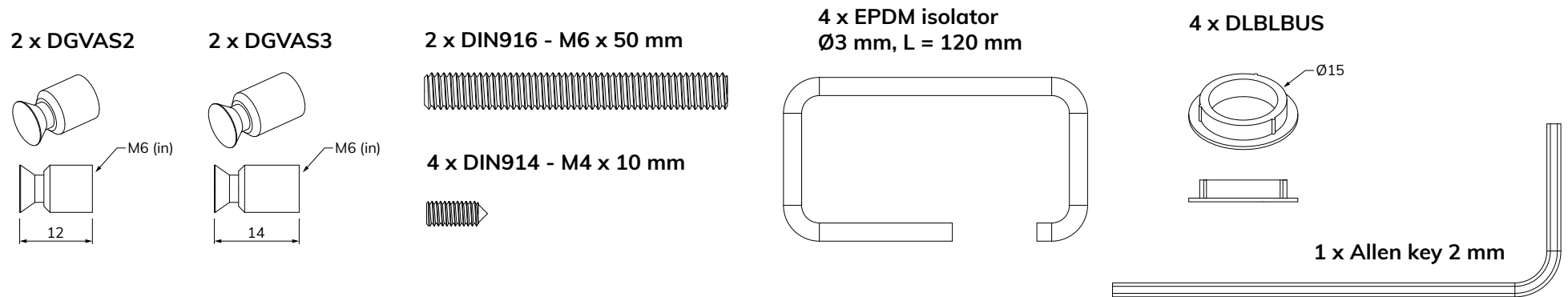
The only fixed dimensions are shown in red.

See page 12 for mounting instructions.



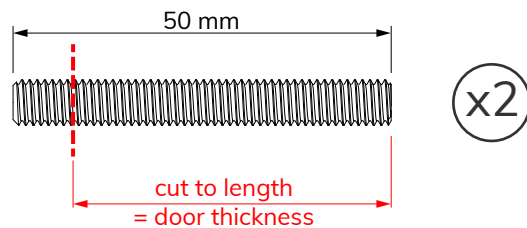
MOUNTING DOORGRIP ON **FULL DOORS: 30-55 MM THICK**

Necessary parts for mounting on full doors:



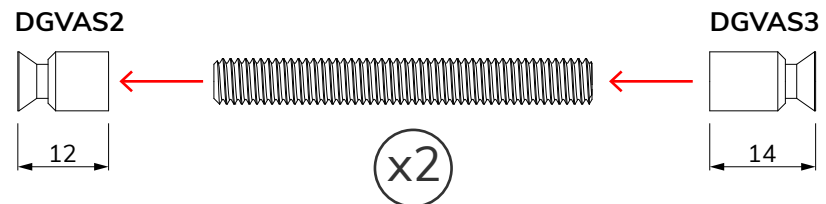
CUT M6 THREADED ROD TO LENGTH

The 50 mm threaded rod is suited for doors of 50-55 mm thickness. For thinner doors, cut the rod to the same length as the door thickness.

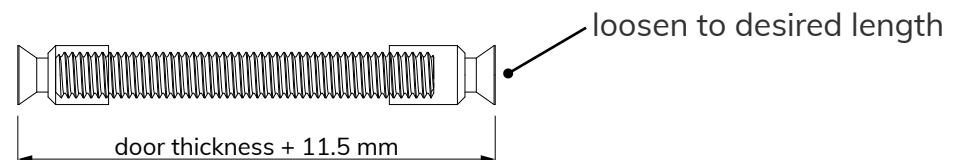


PREPARE THREADED ROD

Screw the rod all the way in DGVAS2. Then screw DGVAS3 on the other side.

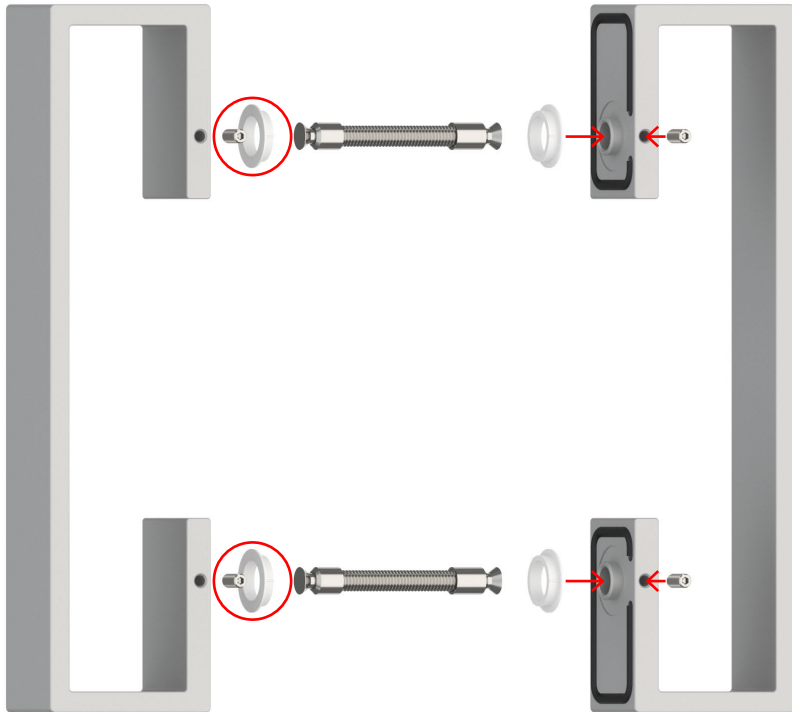


Total length = door thickness + 11.5 mm. So in our example this is 61.5 mm



PREPARE DOORGRIPS

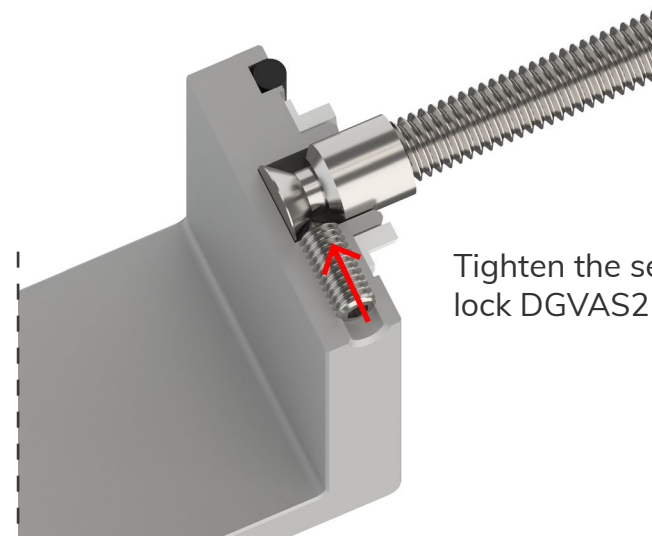
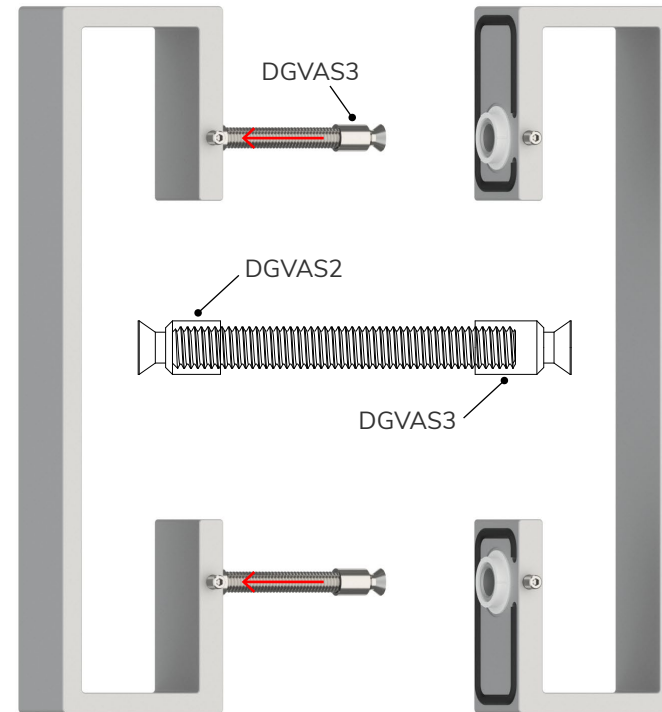
Mount the nylon bushings and setscrews in the doorgrrips. Do not insert setscrews all the way!



Also make sure the rubber cords are in place



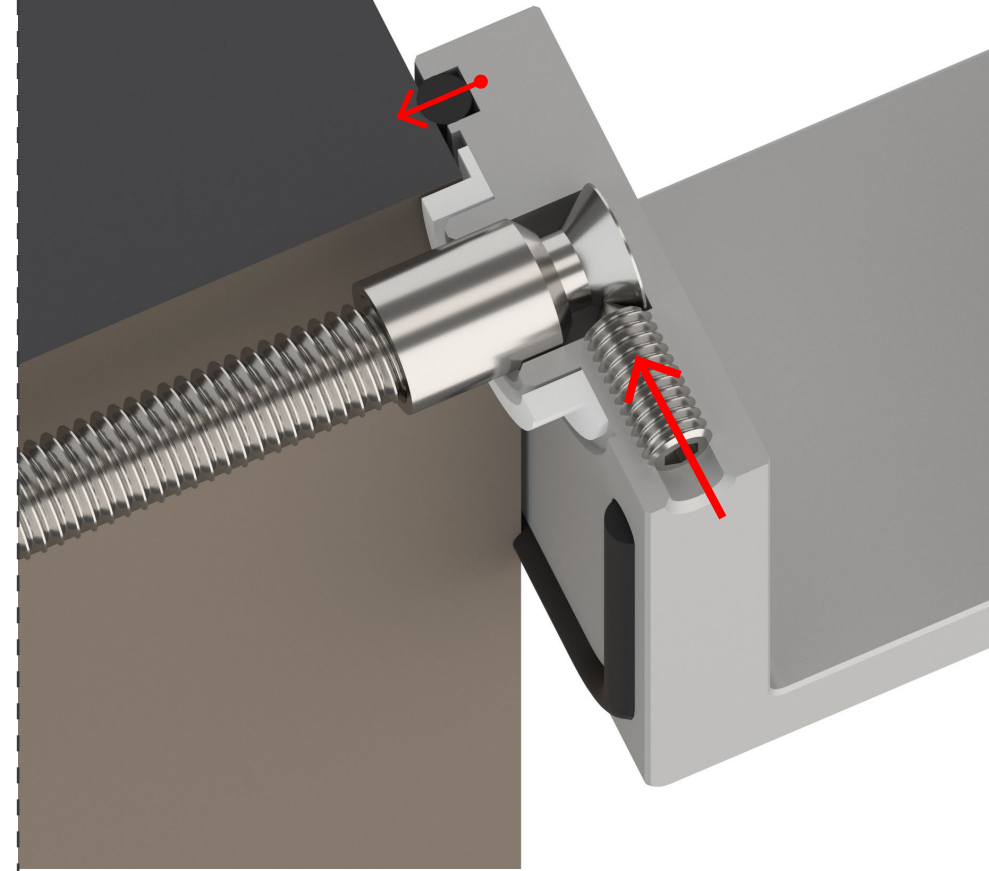
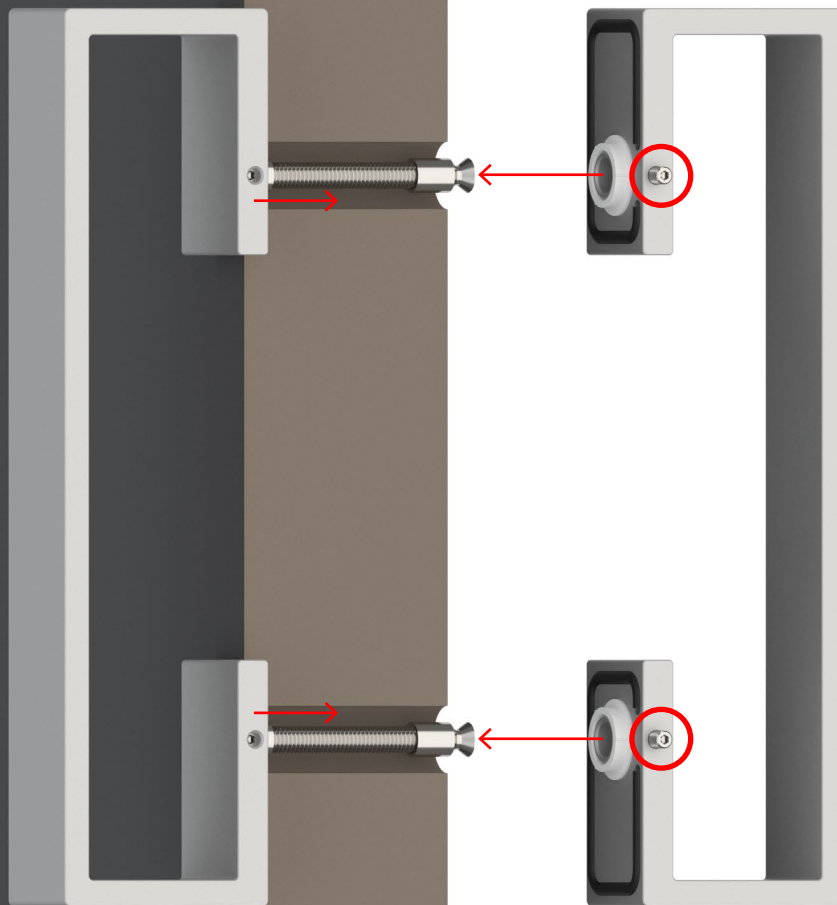
Insert the assembled rods both in the same doorgrip.



Tighten the setscrews so they lock DGVAS2 into the doorgrip

MOUNT DOORGRIPS

Mount the assembled doorgrip on the door through the holes, and insert the second doorgrip over DGVAS3 and into the door holes.



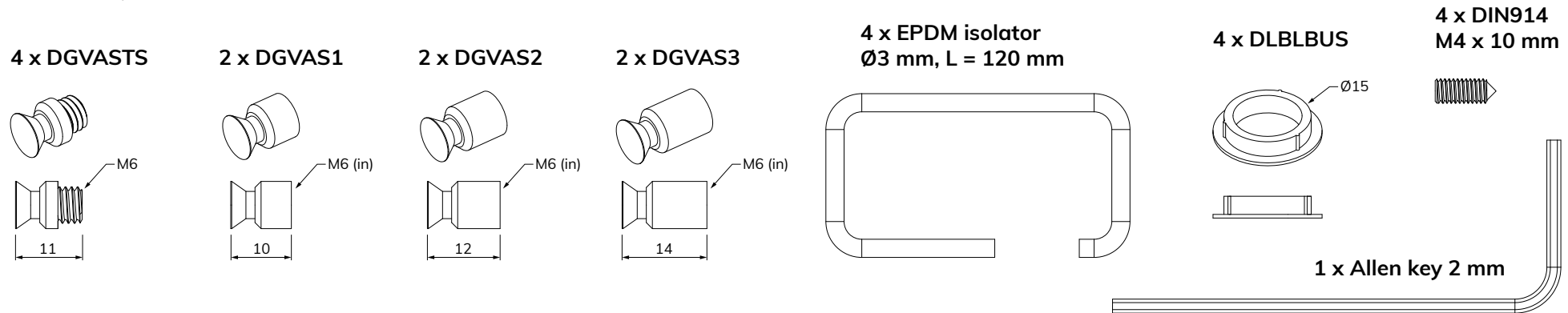
Tighten the setscrews so the doorhandles will be pulled towards each other and create a firm connection to the door.

If the doogrip is **too loose**, remove it and **shorten** the rod assembly a little bit.

If you **can't tighten** the setscrew, remove the doorgrip and **lengthen** the rod assembly a little bit.

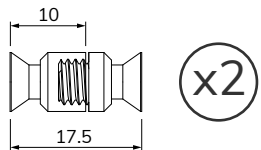
MOUNTING DOORGRIP ON **FLAT PANELS: 6-10 MM THICK**

Necessary parts for mounting on flat panels:



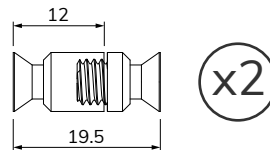
6 MM CONNECTION

Screw DGVASTS onto DGVAS1
so the total length = 17.5 mm



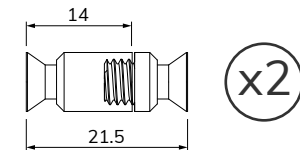
8 MM CONNECTION

Screw DGVASTS onto DGVAS1
so the total length = 19.5 mm



10 MM CONNECTION

Screw DGVASTS onto DGVAS1
so the total length = 21.5 mm



Total length = panel thickness + 11.5 mm.

For panel thickness in between or slightly larger than 10 mm simply assemble and unscrew the appropriate connectors.

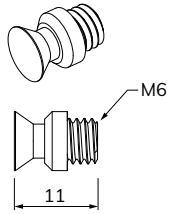
MOUNTING INSTRUCTIONS

The mounting principle is identical to that of full doors (see page 10-11.),
simply replace the appropriate connectors for your panel thickness.

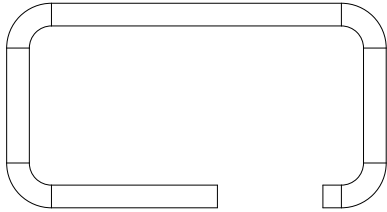
MOUNTING DOORGRIP ON **PAP-5730 ALUMINIUM PROFILE**

Necessary parts for mounting on PAP-5730 aluminium profile

4 x DGVASTS



4 x EPDM isolator
Ø3 mm, L = 120 mm



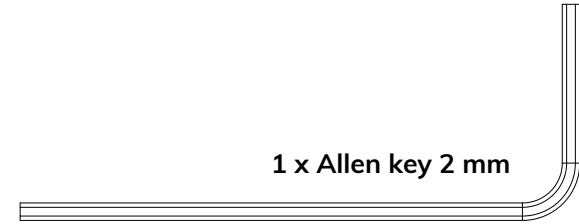
4 x DIN914 - M4 x 10 mm



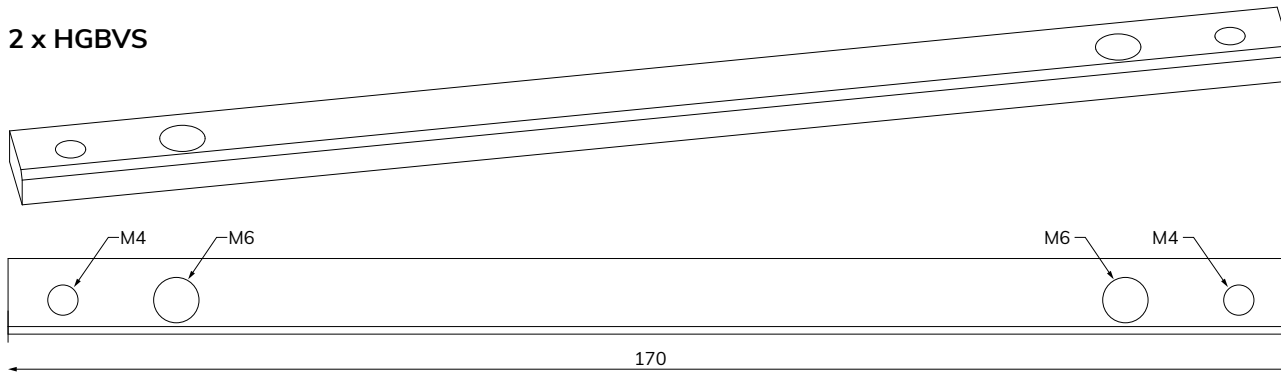
4 x ISO10642 - M4 x 8 mm



1 x Allen key 2 mm



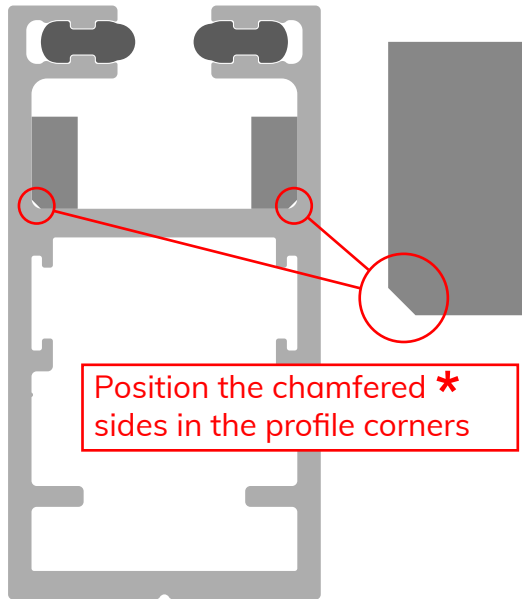
2 x HGBVS



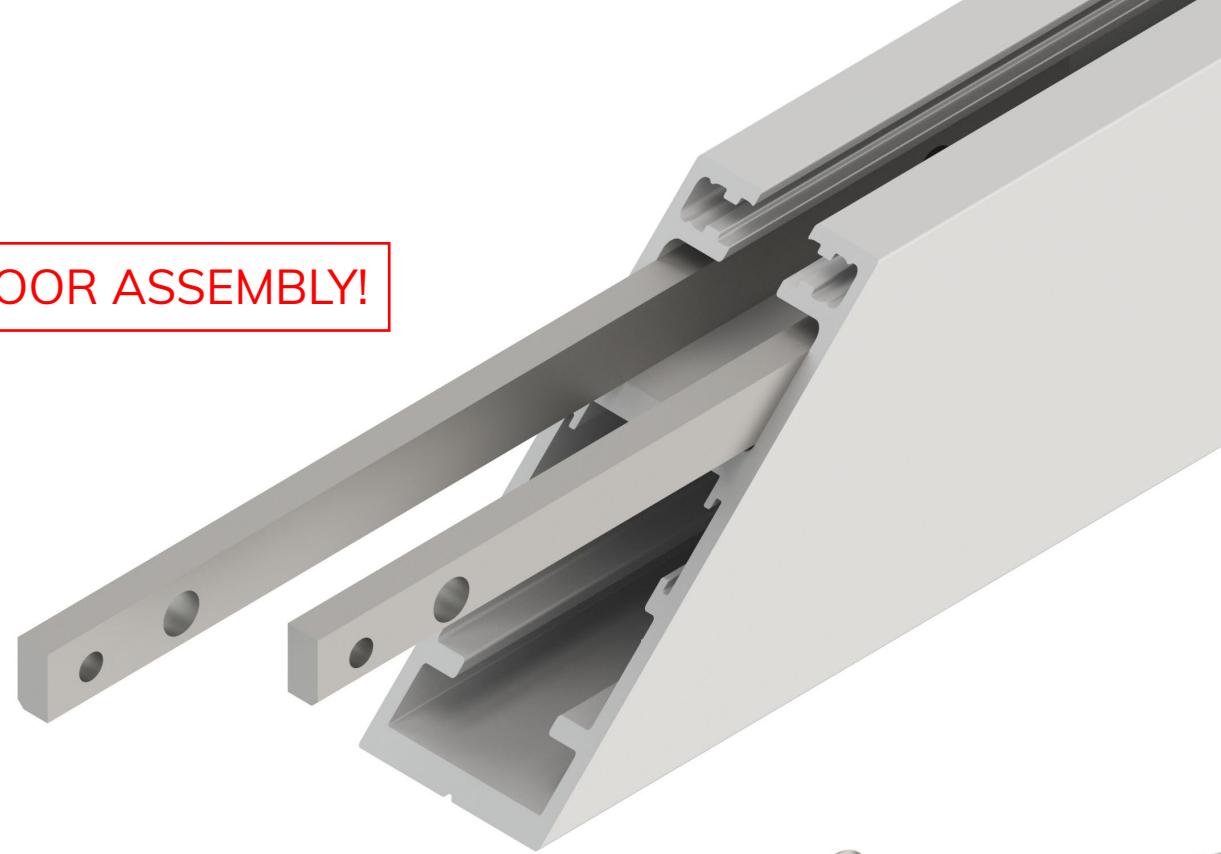
HGBVS INSTALLATION IN 5730

COMPLETE THESE STEPS **BEFORE** DOOR ASSEMBLY!

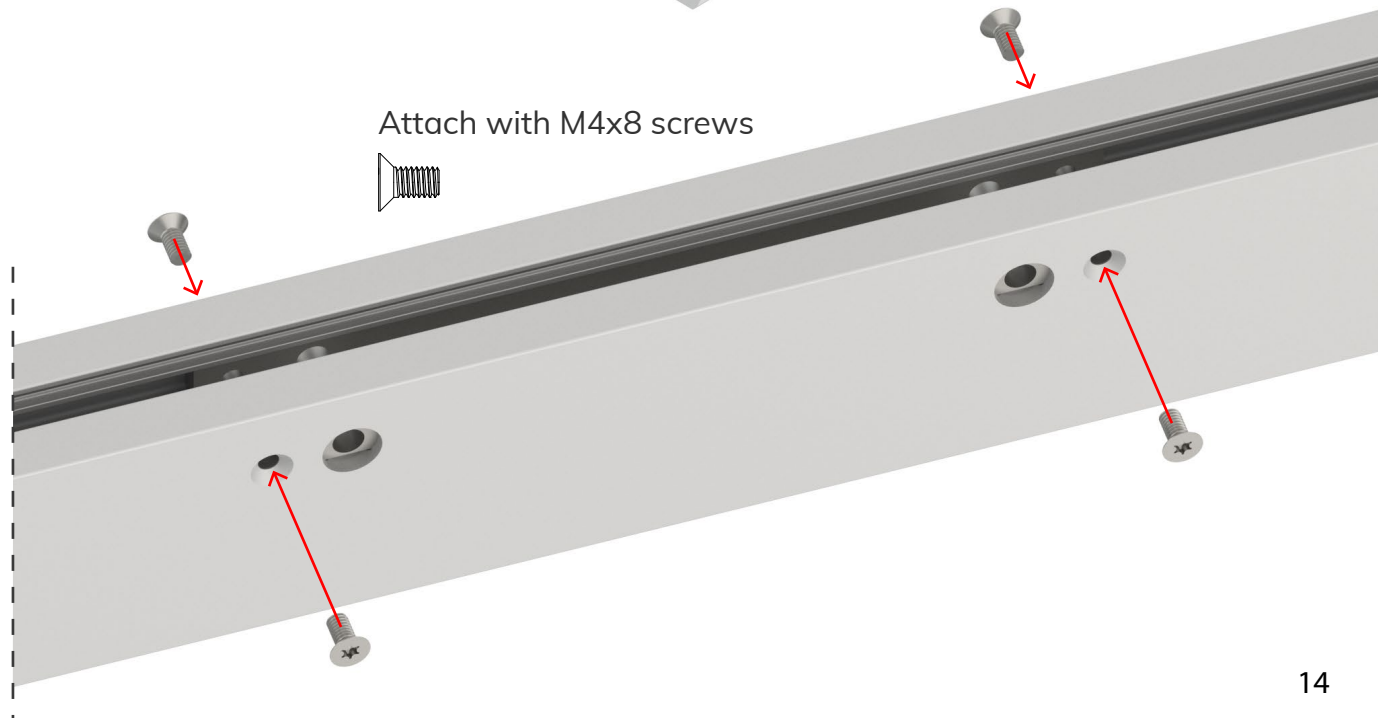
Slide both HGBVS parts into the 5730 profile as shown.



* If all sides are chamfered, orientation doesn't matter. The latest design is fully symmetrical



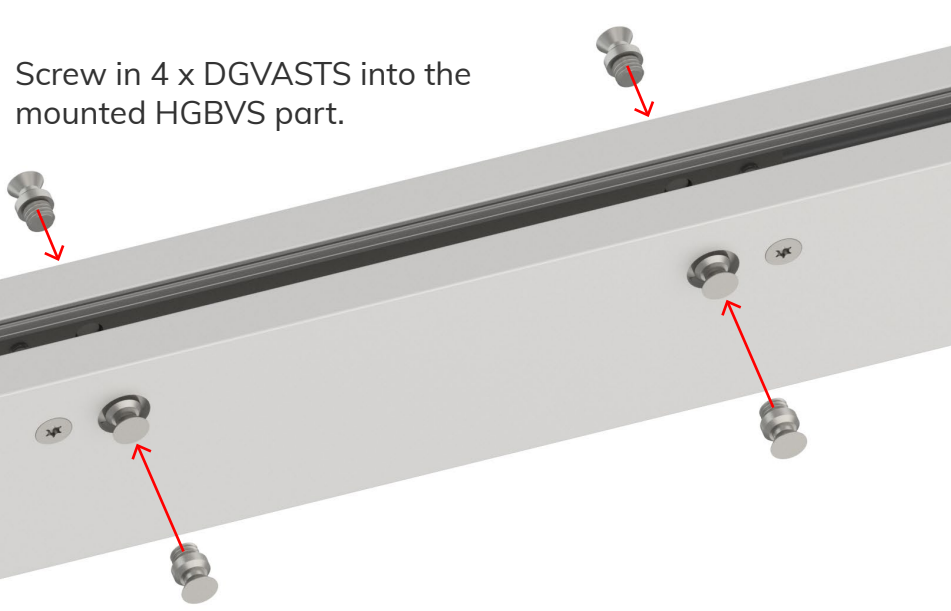
Attach with M4x8 screws



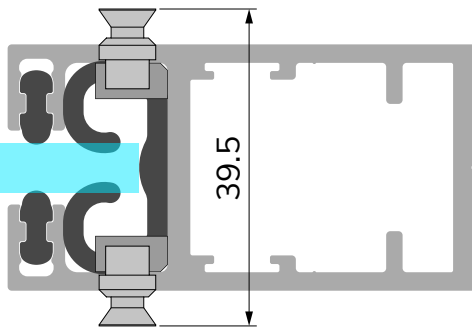
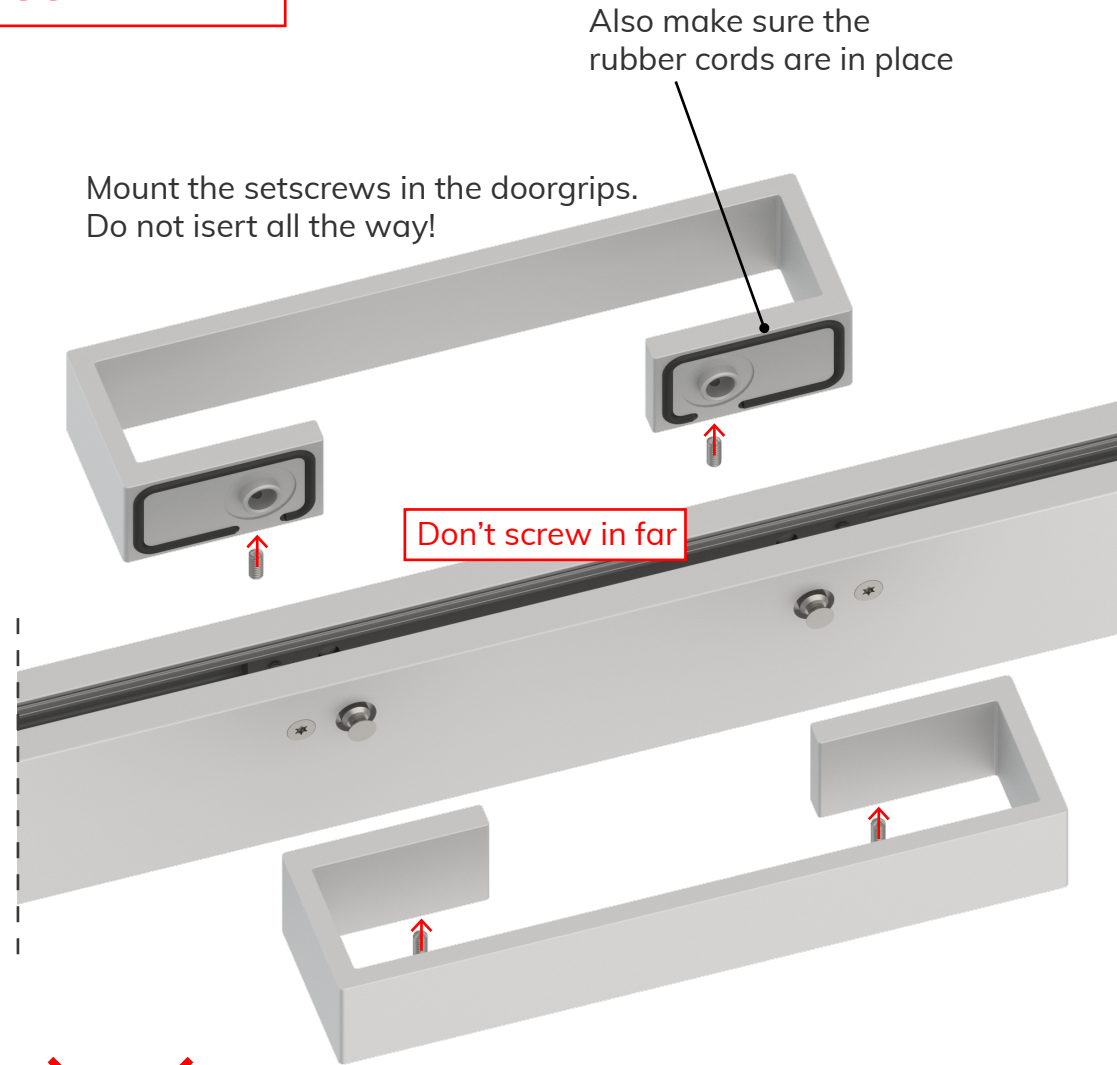
HGBVS INSTALLATION IN 5730

COMPLETE THESE STEPS **AFTER** DOOR ASSEMBLY!

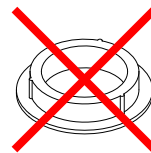
Screw in 4 x DGVASTS into the mounted HGBVS part.



Mount the setscrews in the doorgrips. Do not insert all the way!

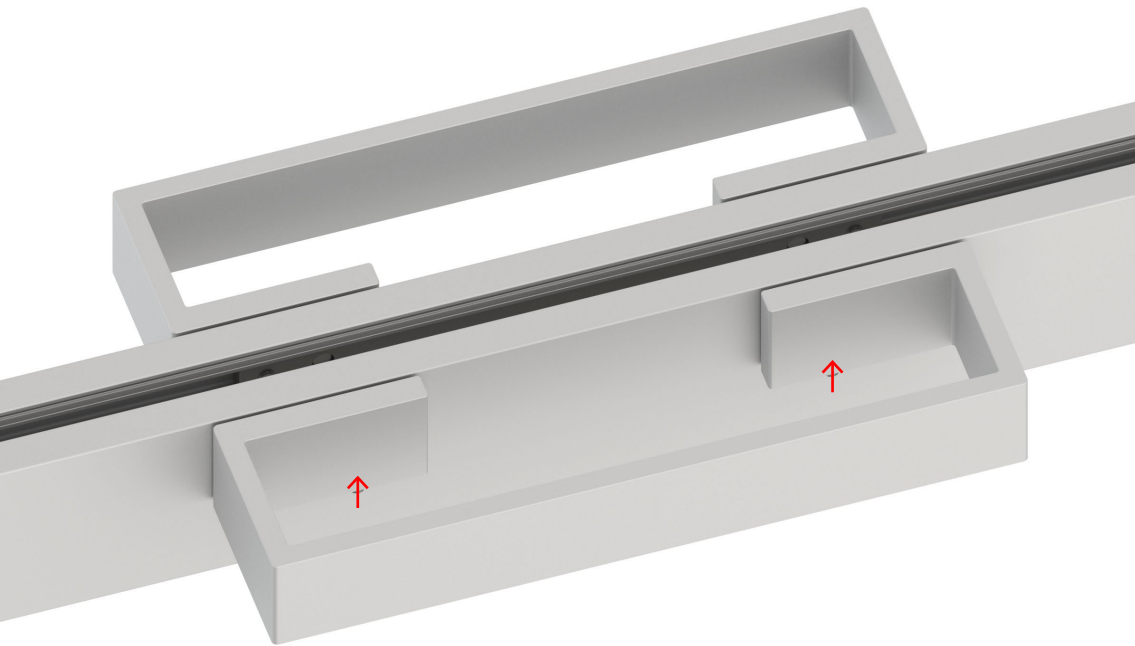


Starting distance should be 39.5 mm



Don't use these bushings!

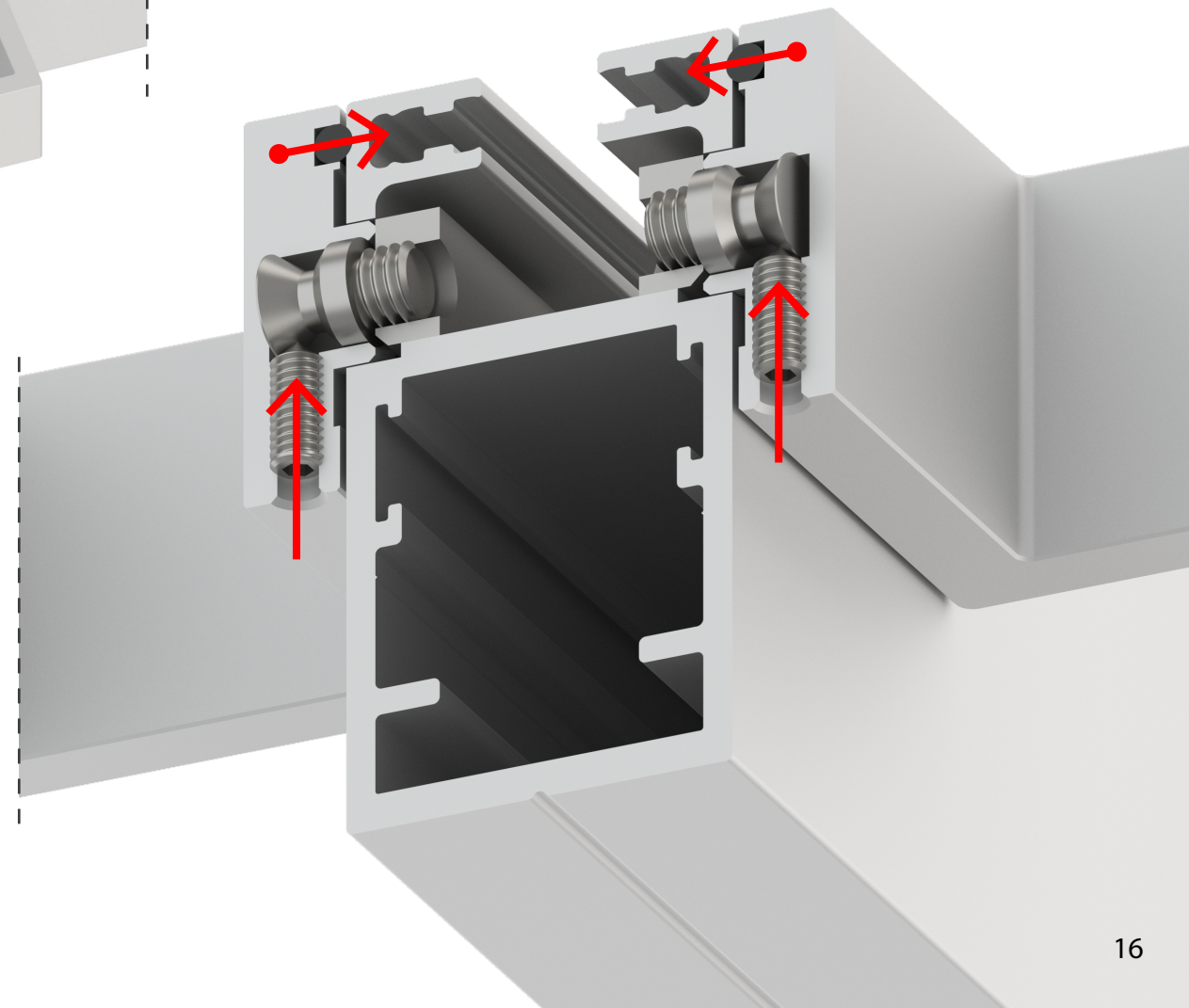
LOCK DOORGRIP ONTO FRAME



If the doorgrip is **too loose**, remove it and **screw in** DGVASTS a little bit more.

If you **can't tighten** the setscrews, remove the doorgrip and **screw out** DGVASTS a little bit.

Tighten the setscrews so the doorhandles will be pulled towards each other and create a firm connection to the door.



For instructions on how to install
the fully assembled door in your doorway,
please refer to the DOOR INSTALLATION MANUAL