



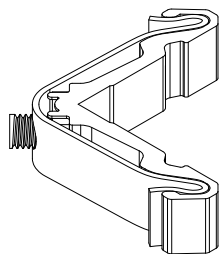
STEALTHPIVOT

By PortaPivot

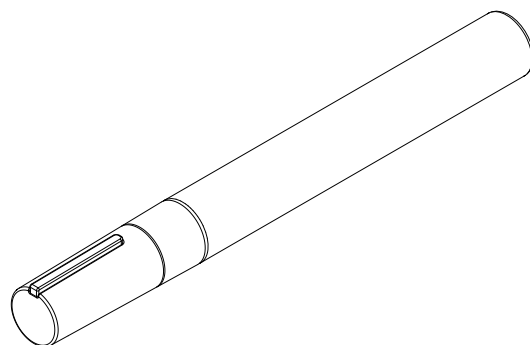
ASSEMBLY MANUAL
FIXED PARTITION MINIMAX (2038)



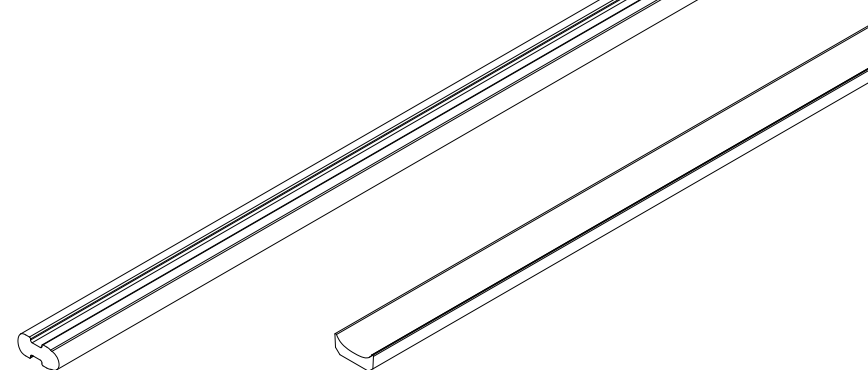
PORTAPIVOT FIXED MINIMAX (2038) PARTS



PAP-MCDS48-11,7x11x11,5

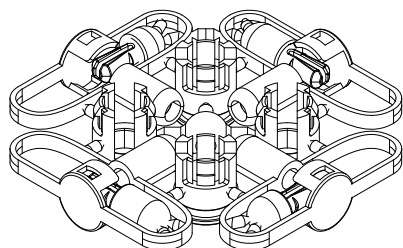


SAW CUT MARKER



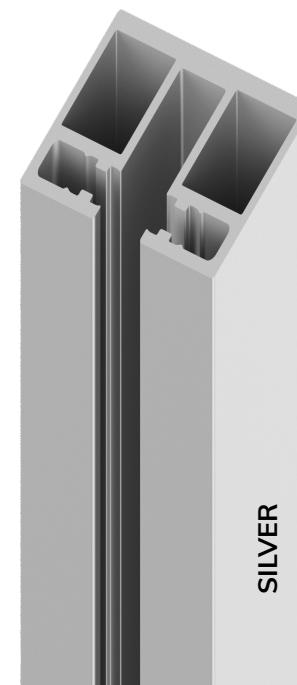
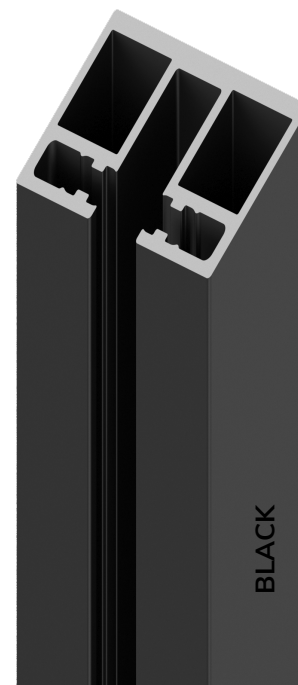
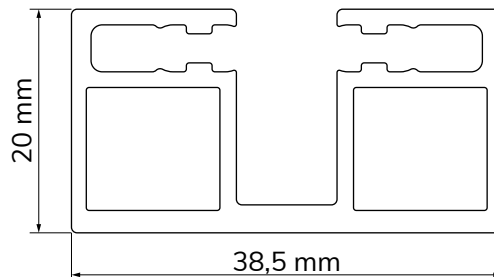
GLR68

AWD-GLRMIMA



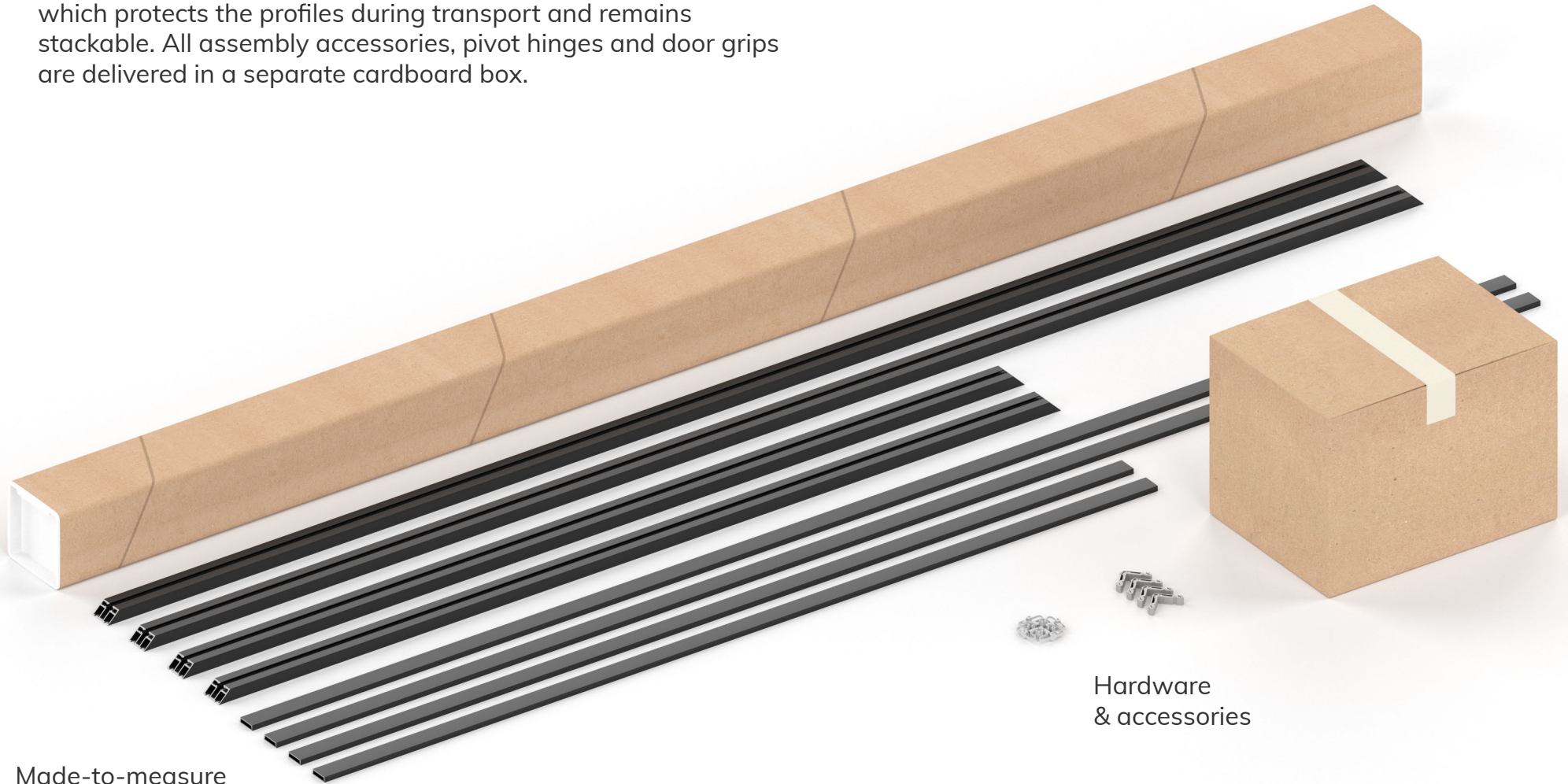
AWD-VW2038FIX

PAP-2038



PORTAPIVOT MINIMAX (2038) EXAMPLE KIT OVERVIEW

The aluminium profiles are delivered in a firm cardboard tube which protects the profiles during transport and remains stackable. All assembly accessories, pivot hinges and door grips are delivered in a separate cardboard box.



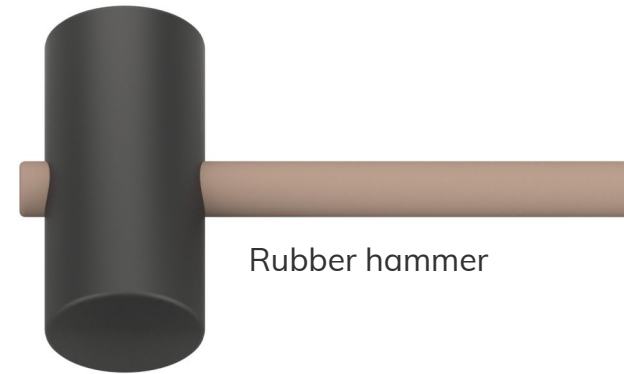
Made-to-measure
& fully prepared profiles

Hardware
& accessories

LOCALLY SOURCED MATERIALS

- ▶ 8 mm tempered glass
- ▶ Isopropyl alcohol (cleaning alcohol)
- ▶ Silicone spray
- ▶ Isopropyl alcohol (cleaning alcohol)
- ▶ Acetone
- ▶ Loctite

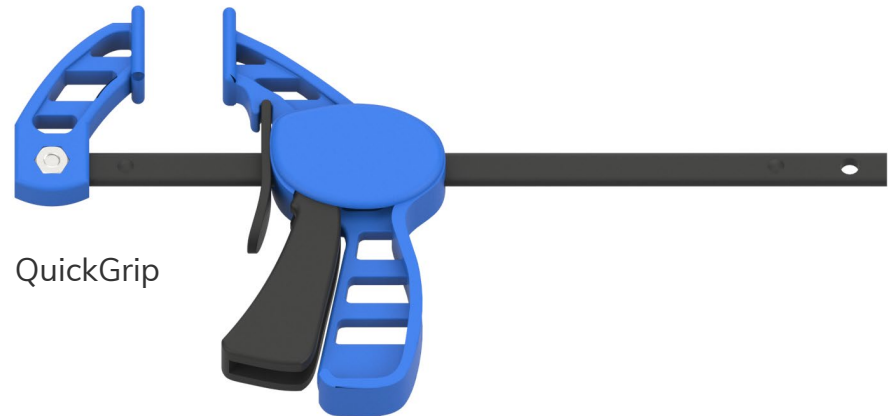
RECOMMENDED TOOLS



Rubber hammer



Bit screwdriver



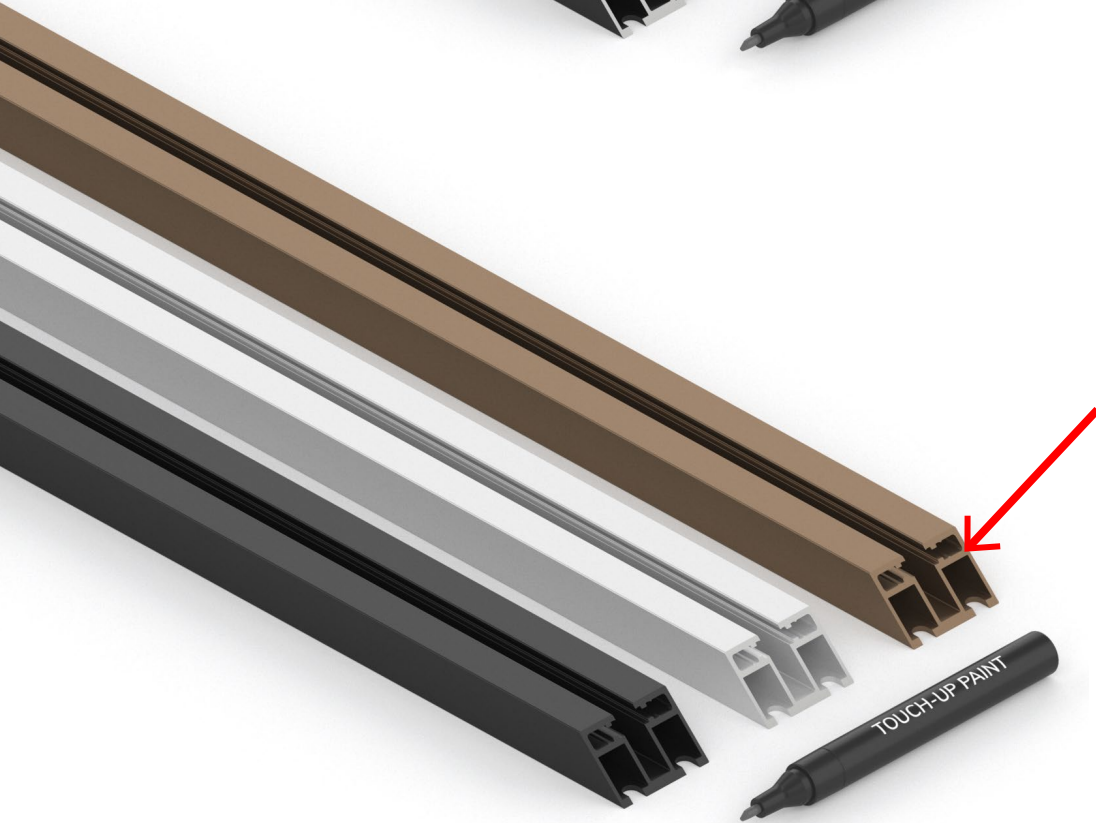
QuickGrip

COLOR SAW CUTS

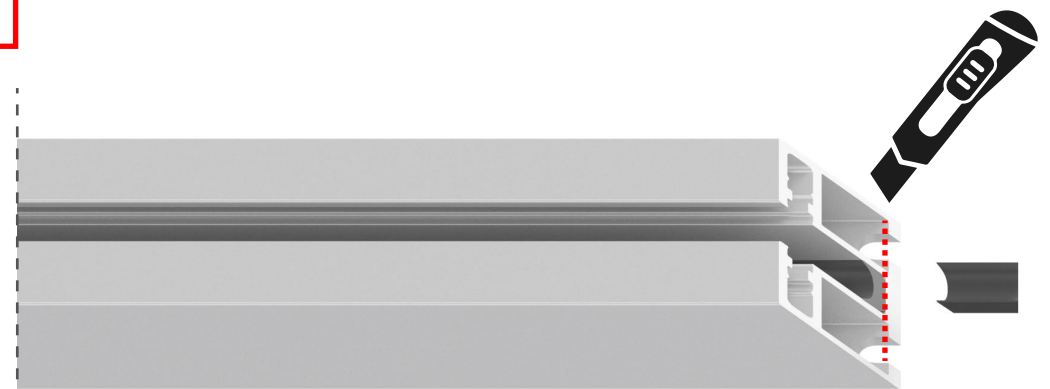
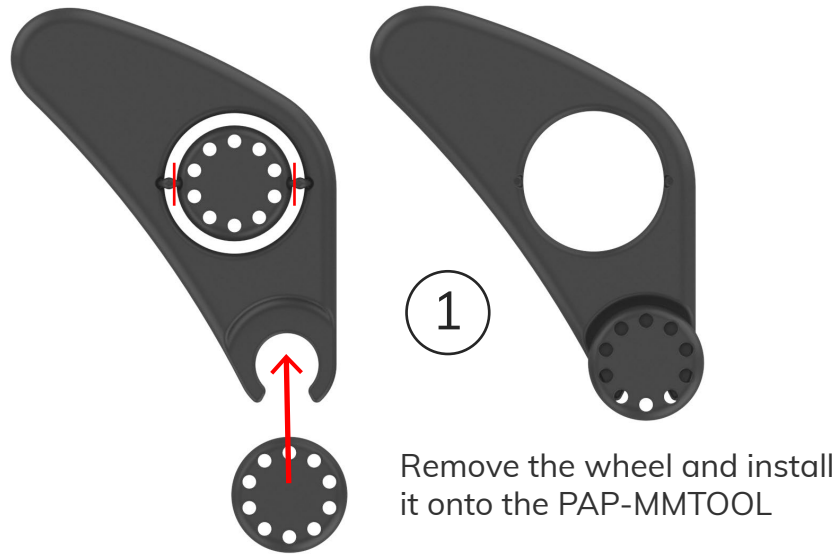
Degrease* the saw cuts and use the supplied marker to paint the cuts.

*Isopropyl alcohol

Remove excessive paint from
visual sides with acetone or alike



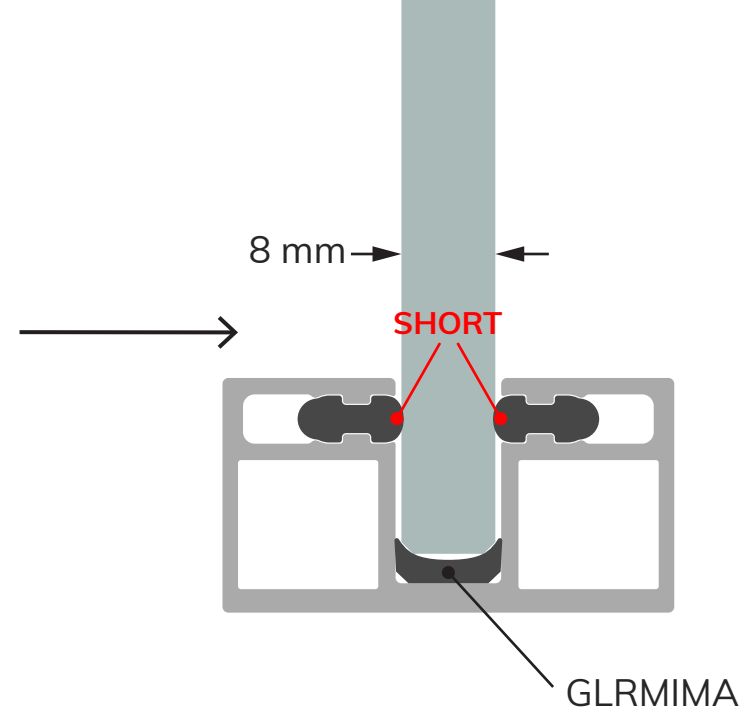
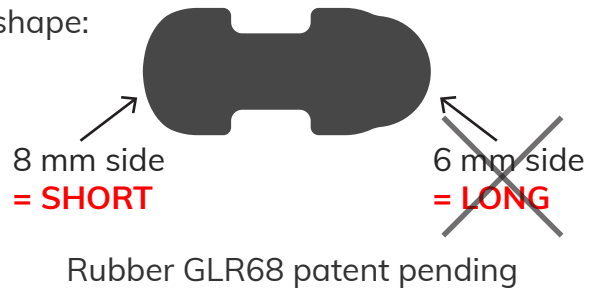
INSERT EPDM GLRMIMA



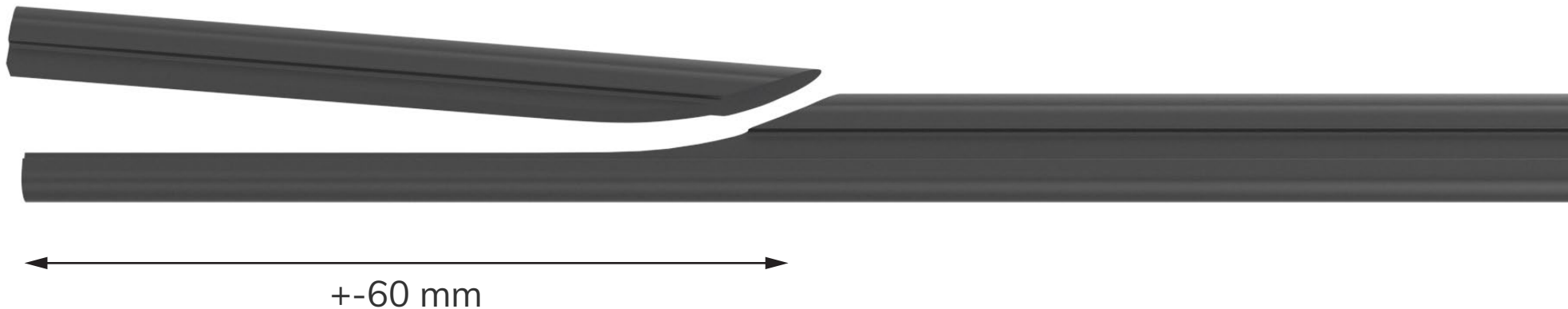
INSERT GLR68 RUBBER EXTRUSIONS

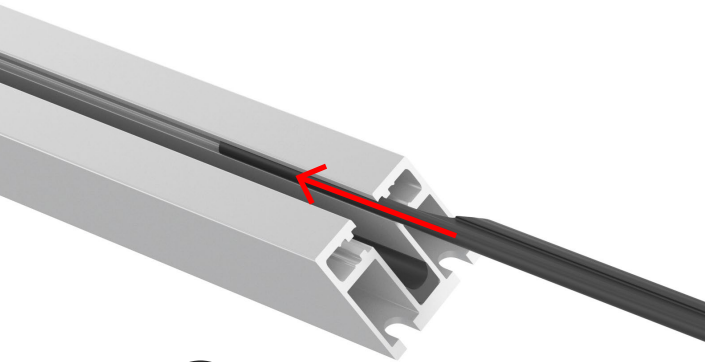
The GLR68 rubber can be used for 6 or 8 mm glass because of its excentric profile shape. However the minimax door always uses 8 mm tempered glass, so you must insert the GLR68 as shown.

GLR68 profile shape:



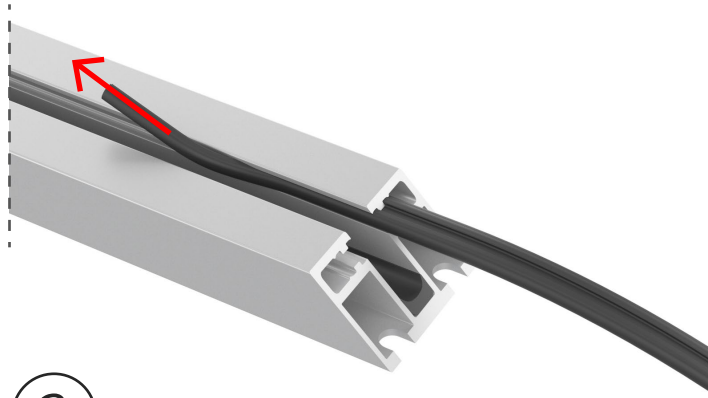
- 1 Cut off a strip from the start of the GLR68. For 8 mm glass, cut off the **LONG** side.





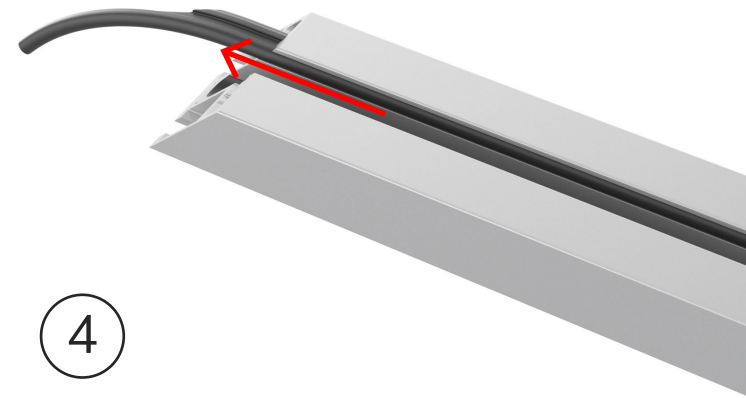
2

Guide the GLR68 through the canal, with the thin side towards the center of the profile.



3

Pull the thin side out, and use this to pull the GLR68 through the aluminium profile.



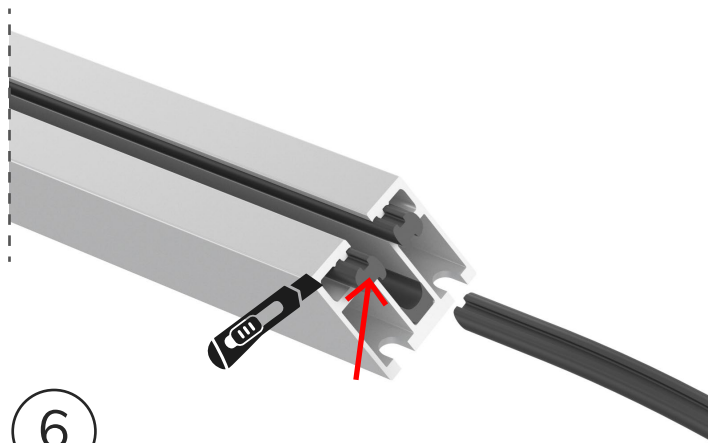
4

Pull all the way through, leaving a bit extra hanging out.



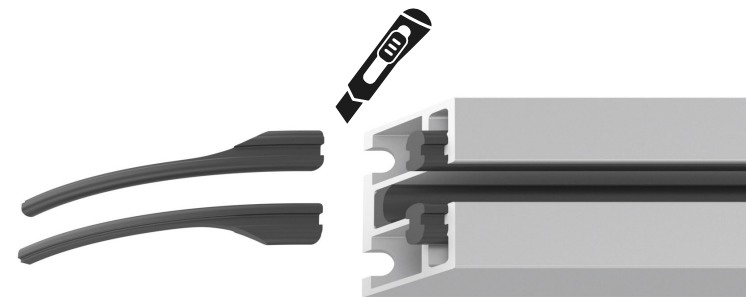
5

Cut this end at a 45° angle.



6

Repeat steps 1-5 for the second GLR68



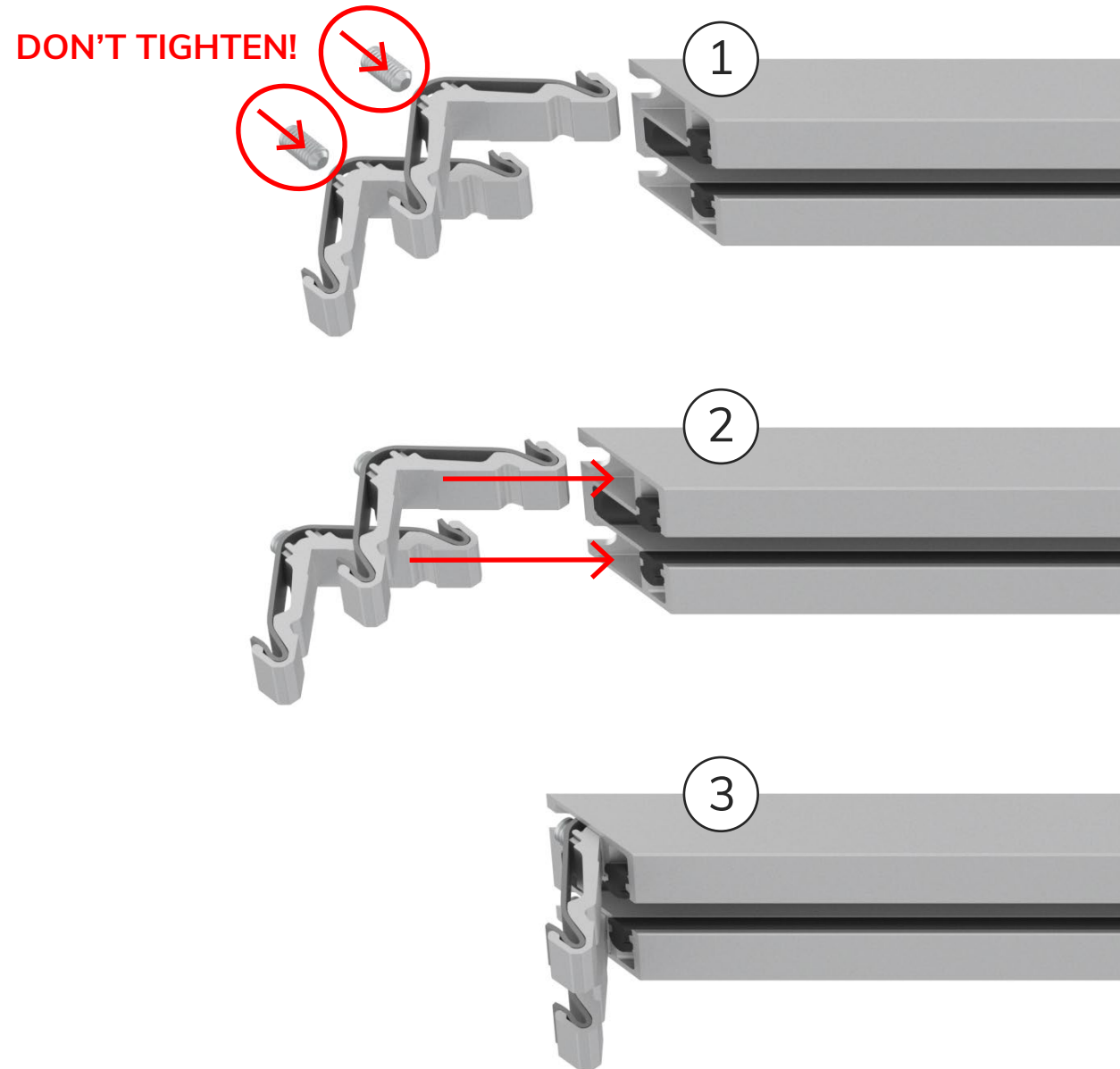
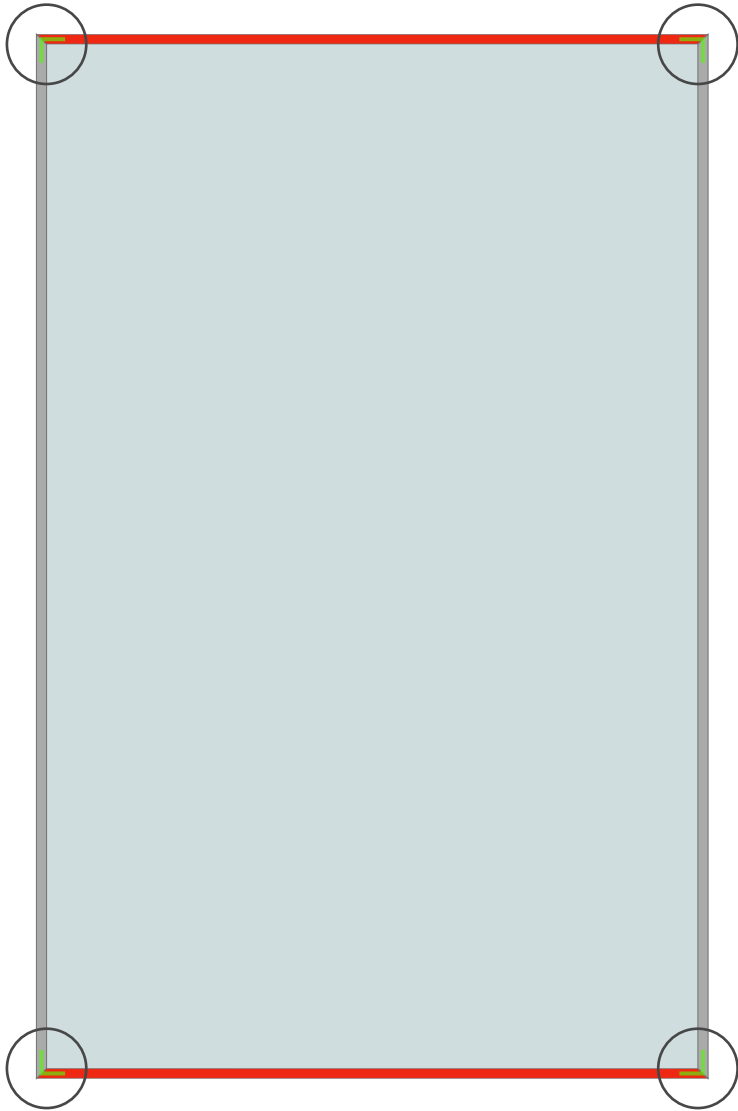
7

Cut off both remaining ends at the other side.

Apply steps 1-7 to each profile

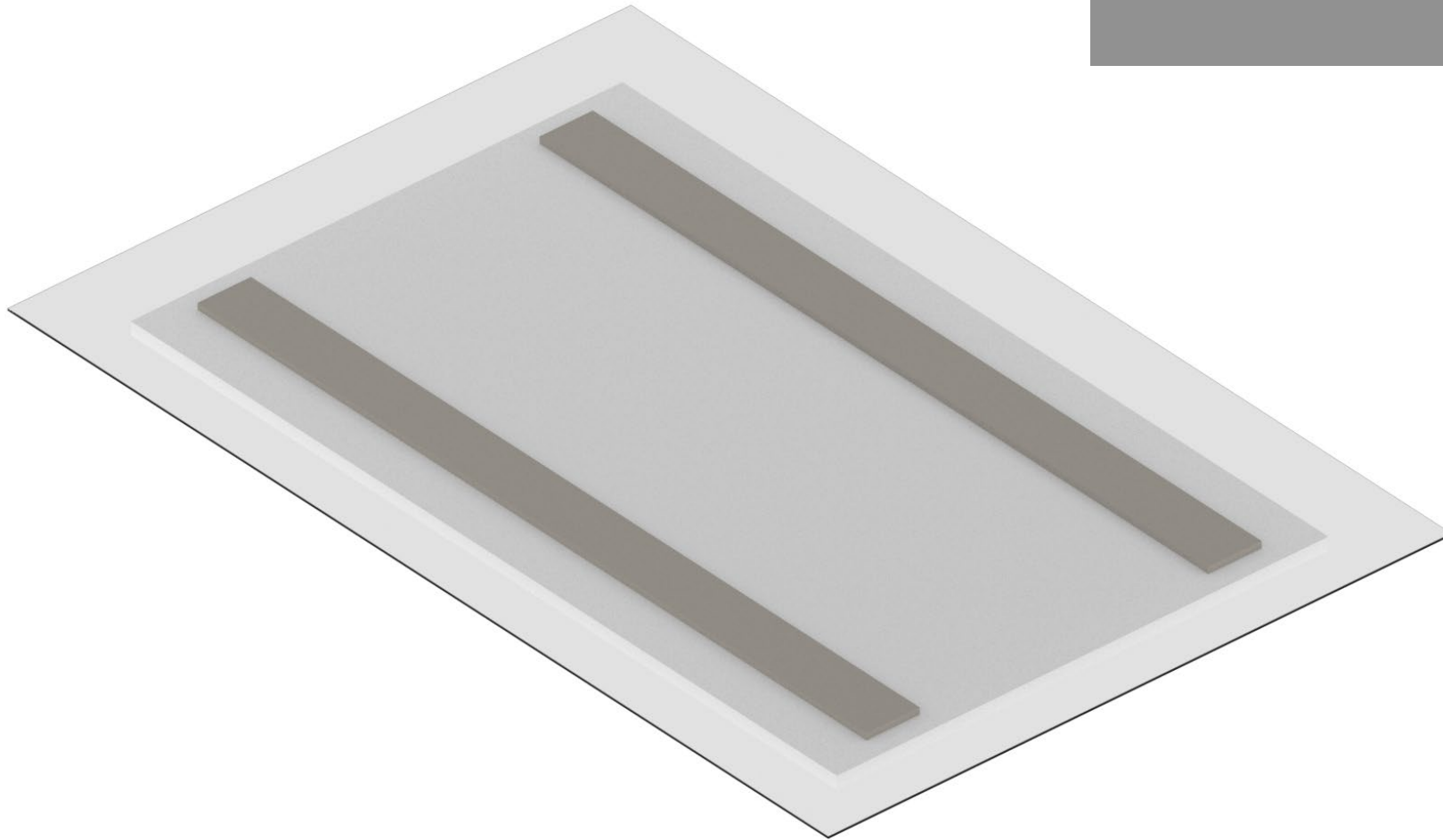
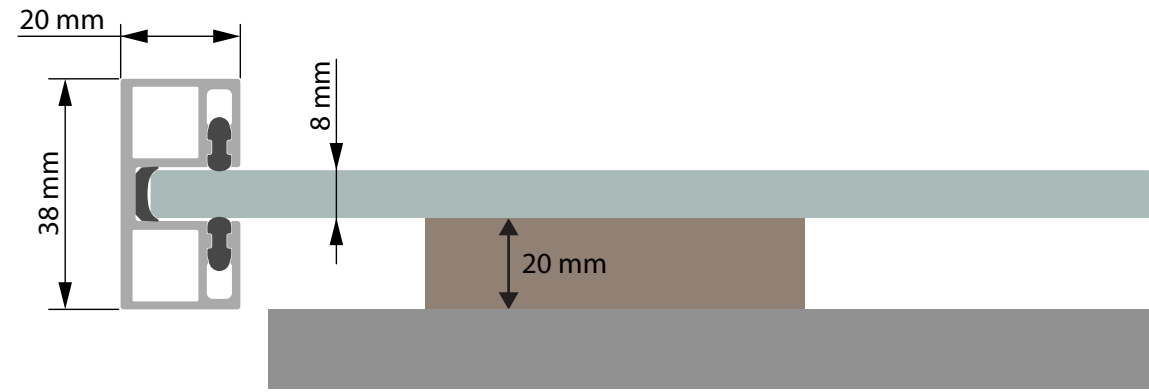
PREPARE TOP AND BOTTOM PROFILES

Insert the corner joints in the TOP and BOTTOM profile at each end.



PLACE GLASS PANEL

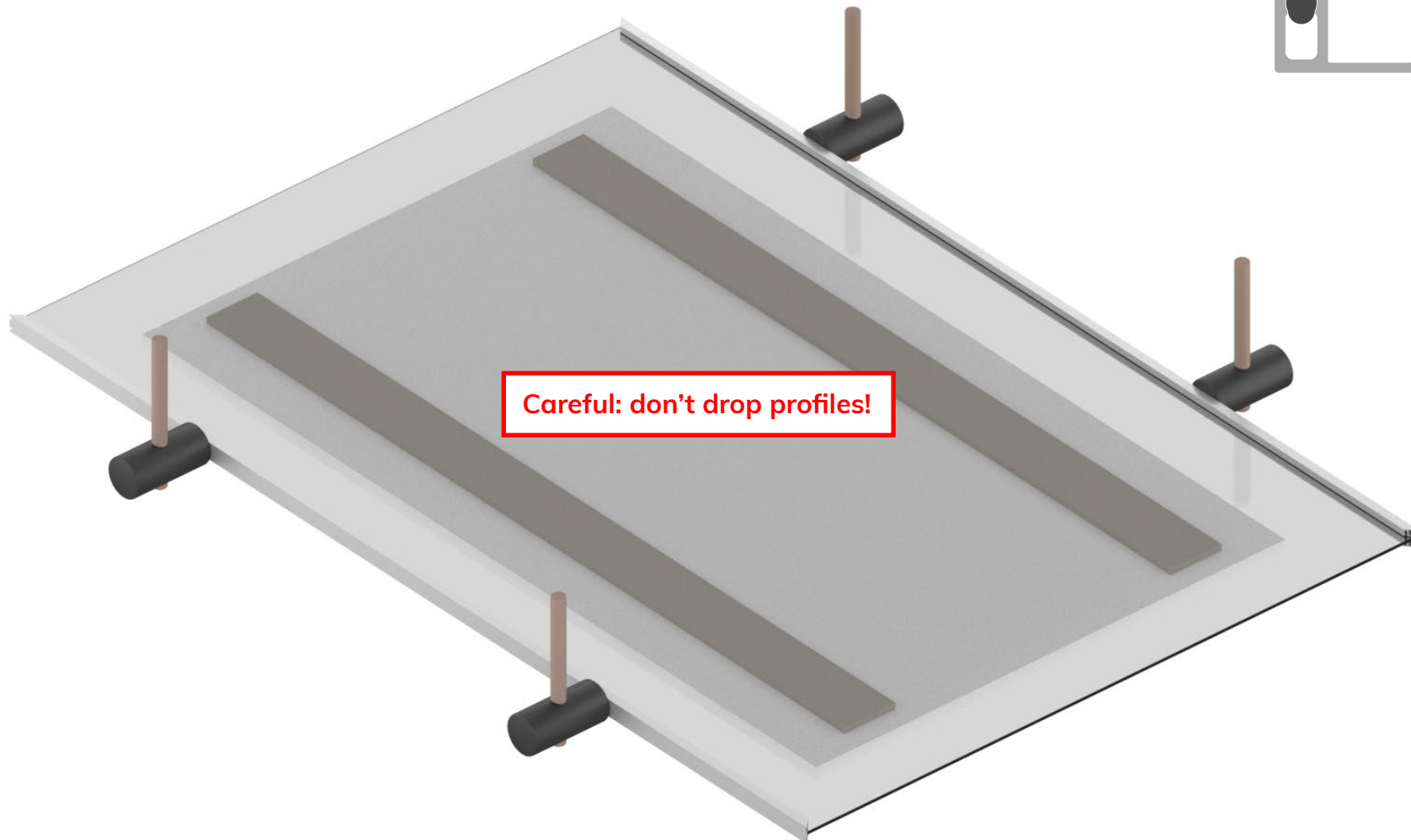
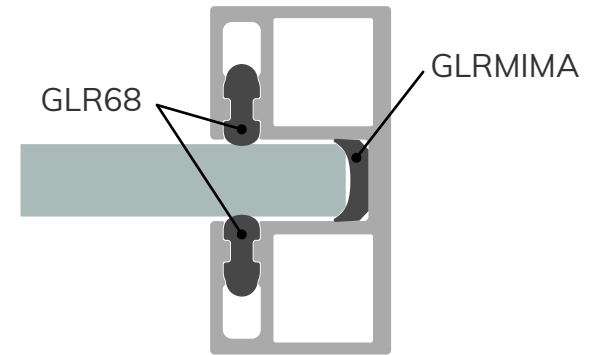
Use 2 wooden spacers (+-20 mm thick) on an assembly table and place the locally purchased panel on top.

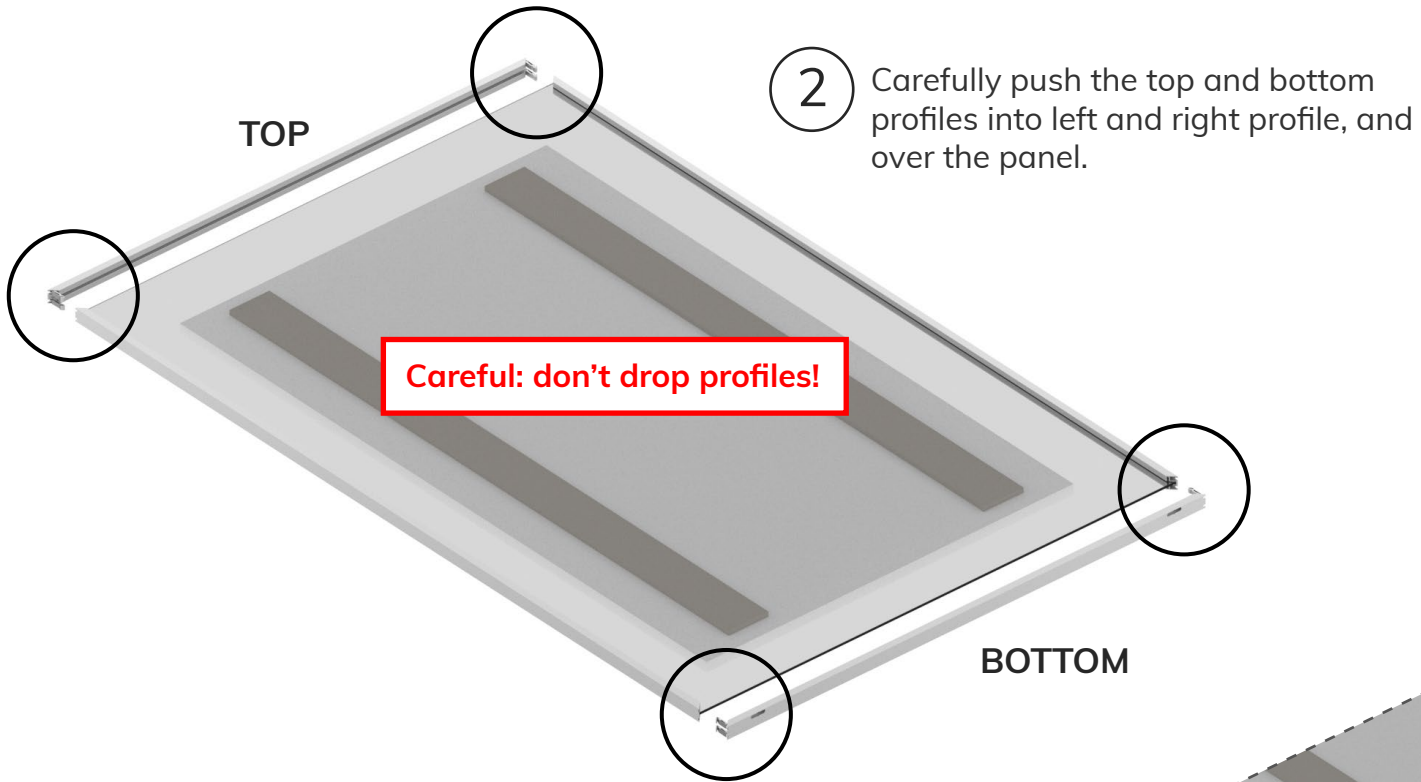


MOUNT PROFILES ON GLASS

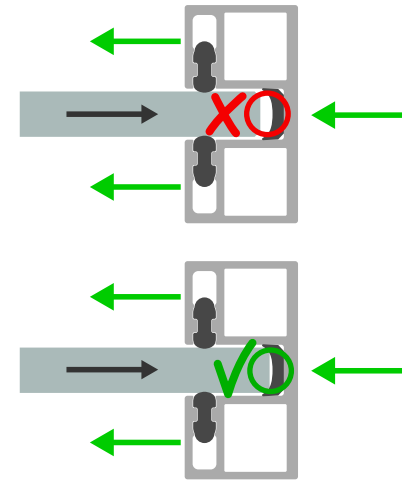
- 1 Push the left and right profiles with GLR68 and GLRMIMA over the panel, aligning the center of the profiles with the center of the glass.

Use a rubber hammer to facilitate positioning.

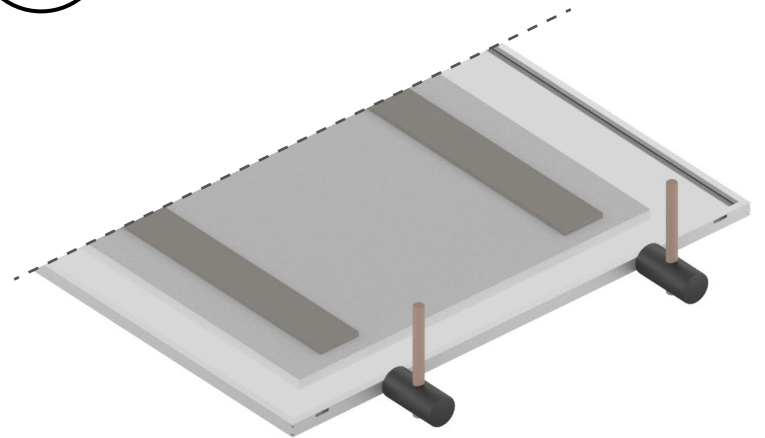




2 Carefully push the top and bottom profiles into left and right profile, and over the panel.

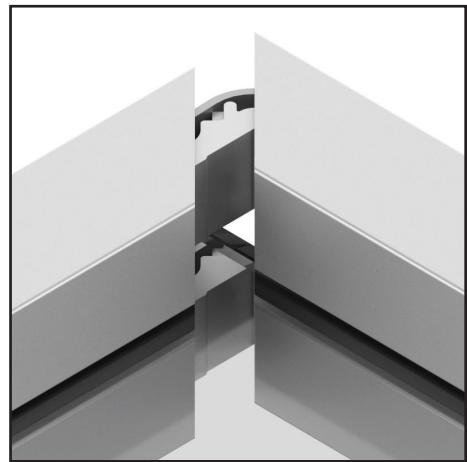
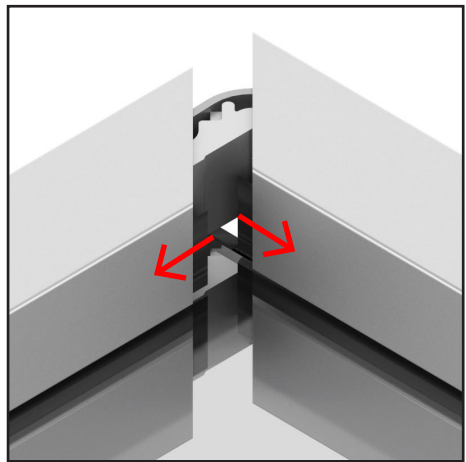


3 Push in any excess GLR68 into the profiles during mounting.



4 Use a rubber hammer to position the bottom profile with the EPDM inserts against the panel.

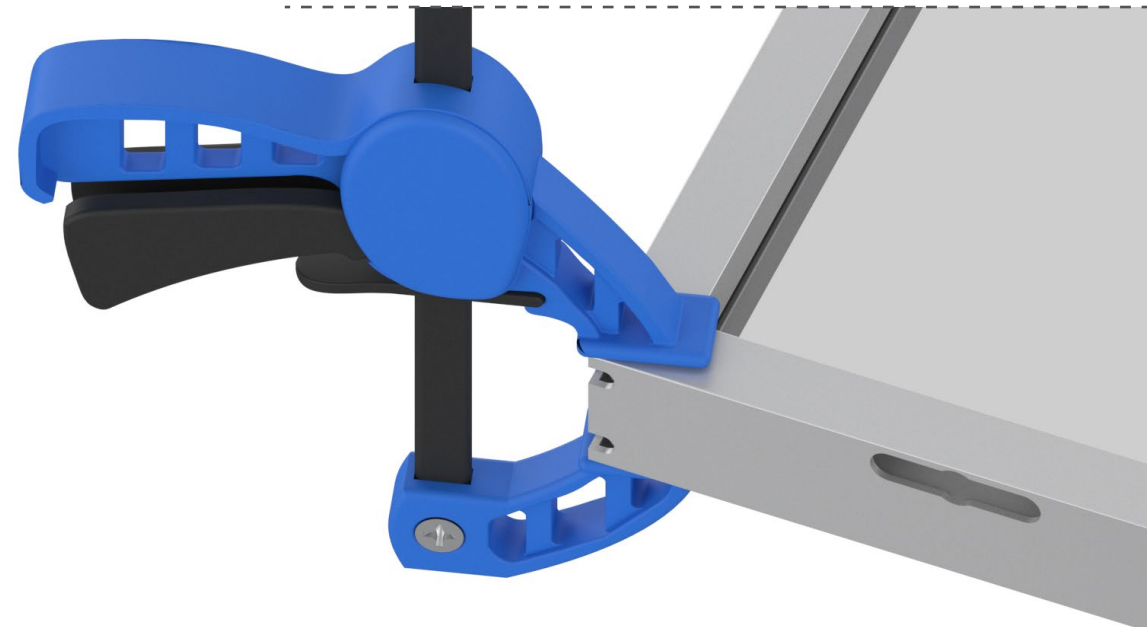
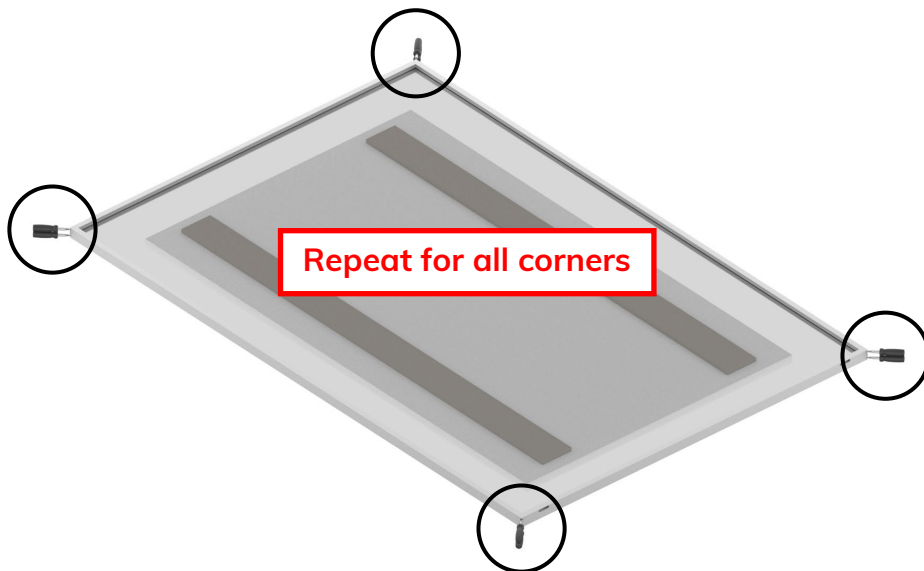
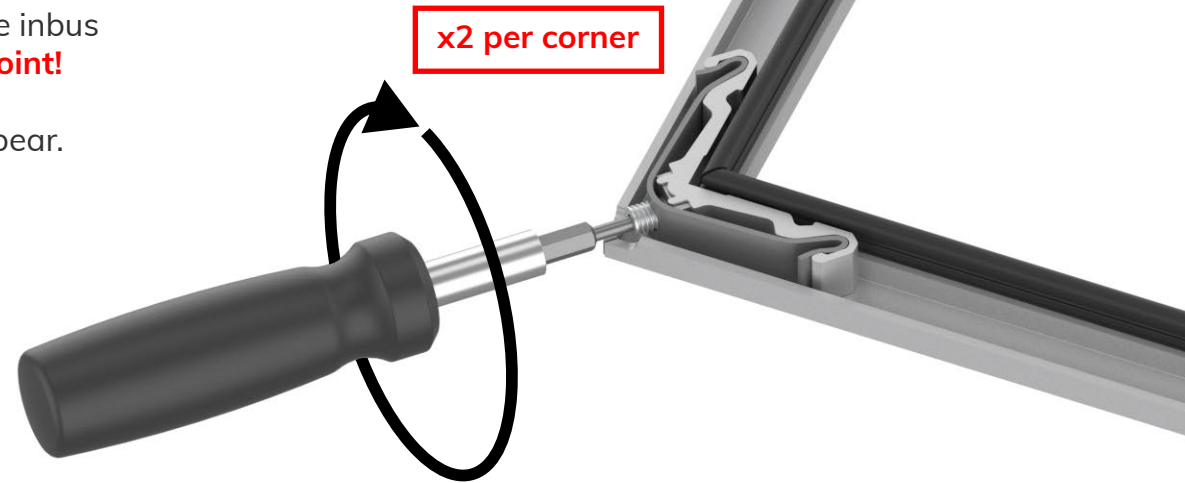
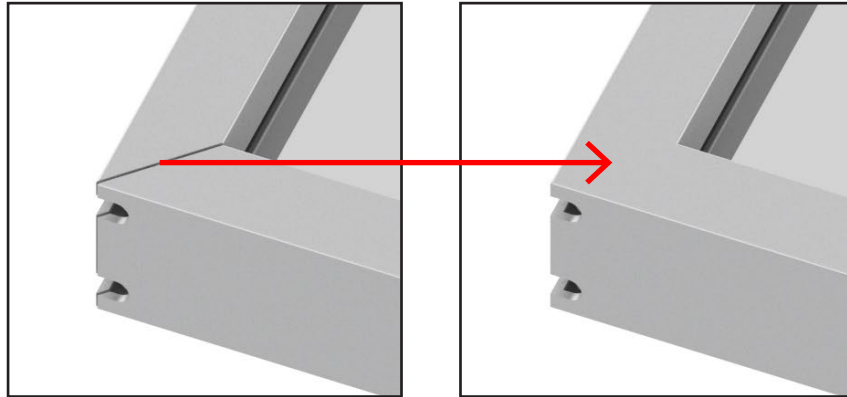
If NOT positioned correctly, the panel will slide down when the fully assembled door is put upright!!



SECURE CORNER JOINTS

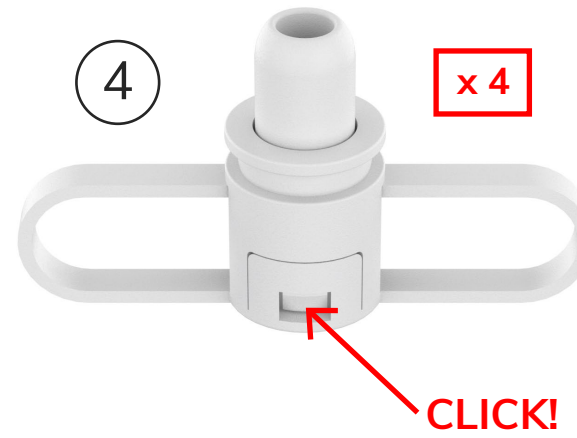
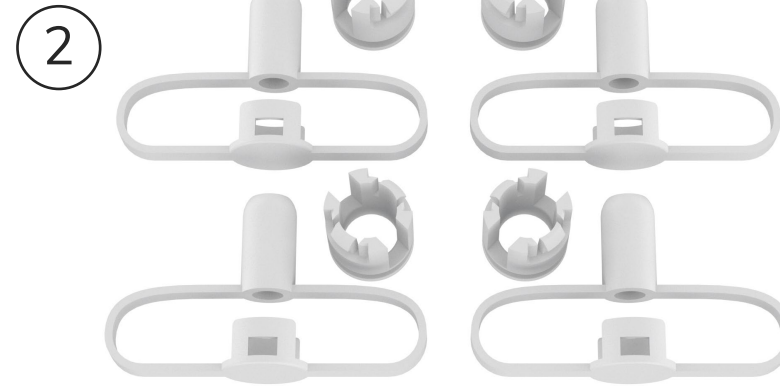
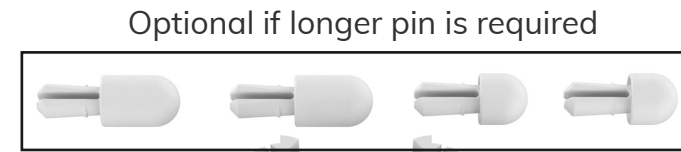
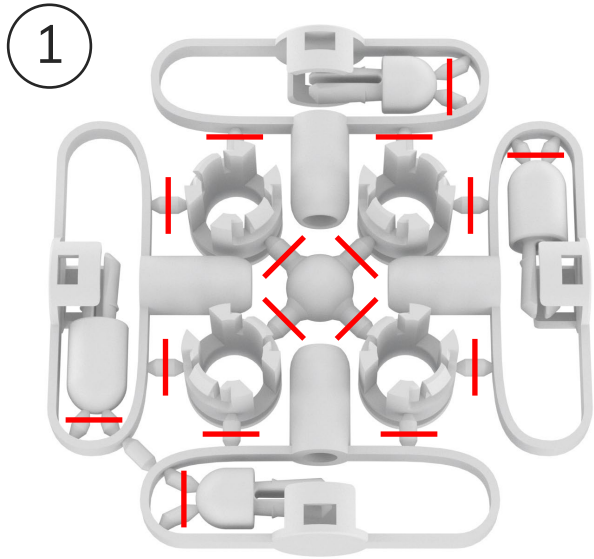
Align the profiles as best as possible, and carefully tighten the inbus screws **BY HAND!** Over-tightening will damage the corner joint!

During tightening, the space between the profiles will disappear.

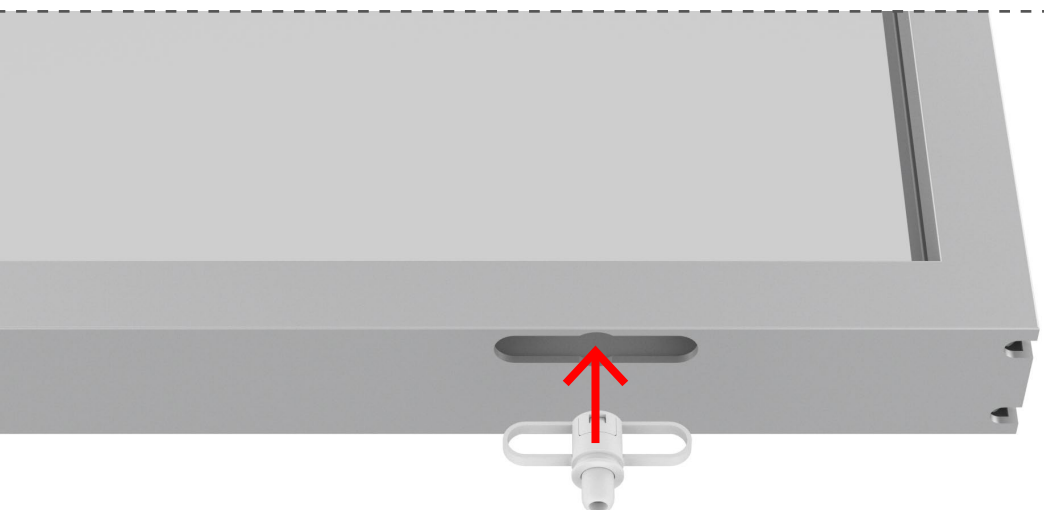


You can use quick-grips to prevent the profiles from shifting up and down during tightening.

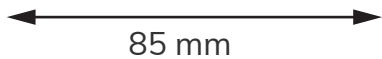
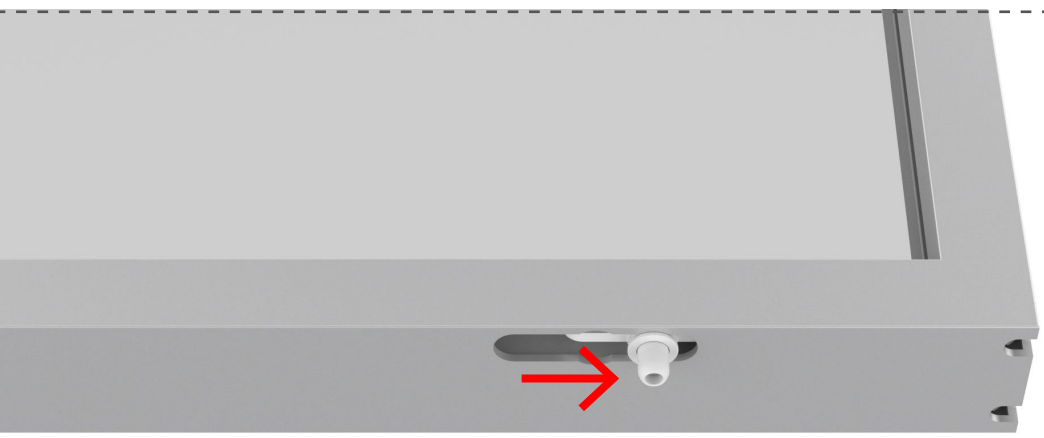
PREPARE POSITIONING CAPS



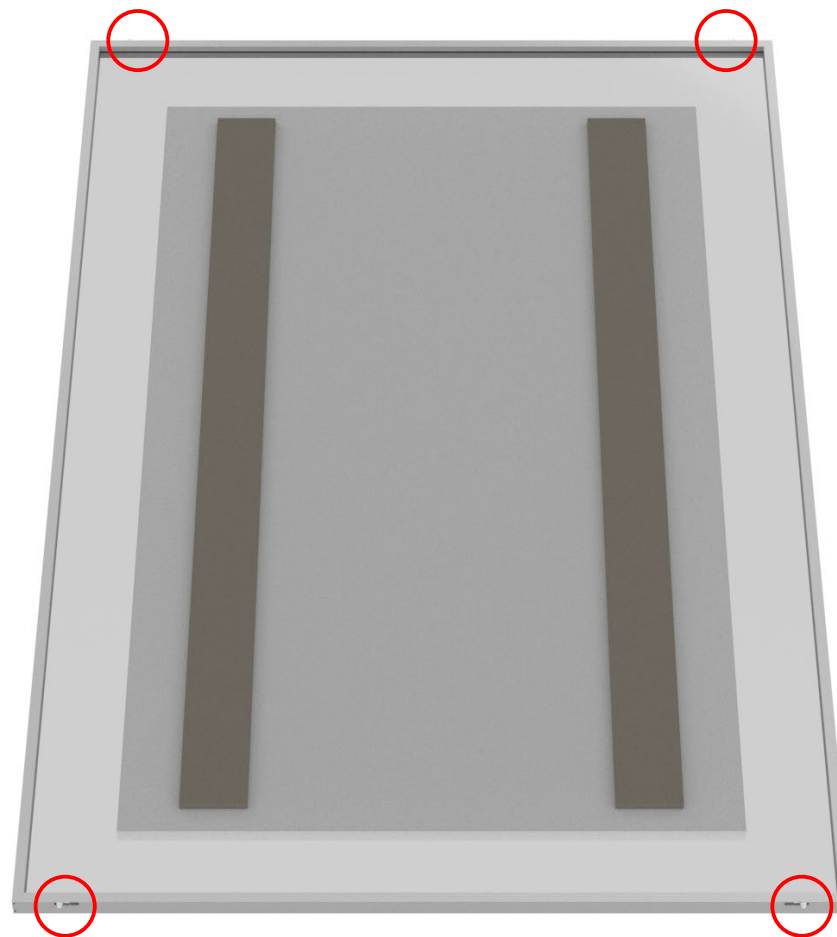
INSERT POSITIONING CAPS



Slide a positioning cap in each side of the top and bottom profiles.



Position it 85 mm from the panels edge



For further instructions on how to install
the fully assembled PAP-2038,
please refer to the
“PAP-FIXED-PARTITIONS-installation-2038” manual