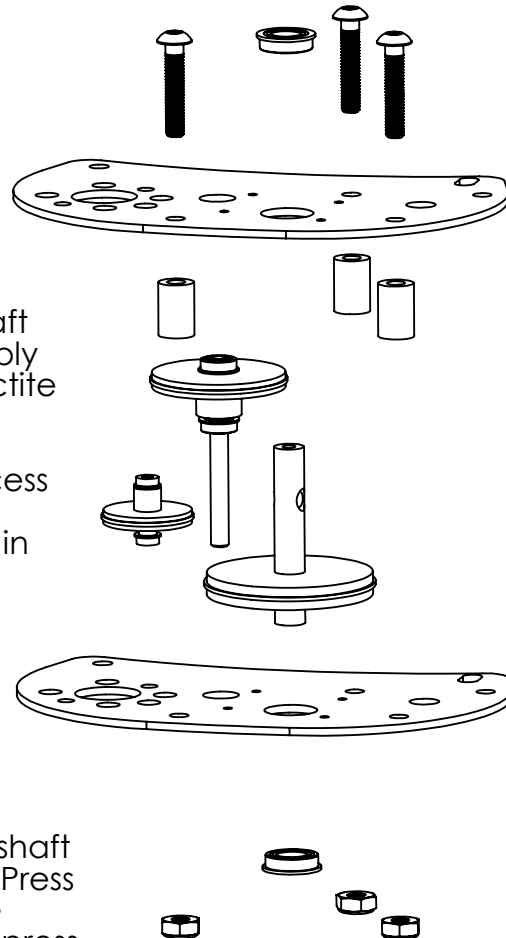
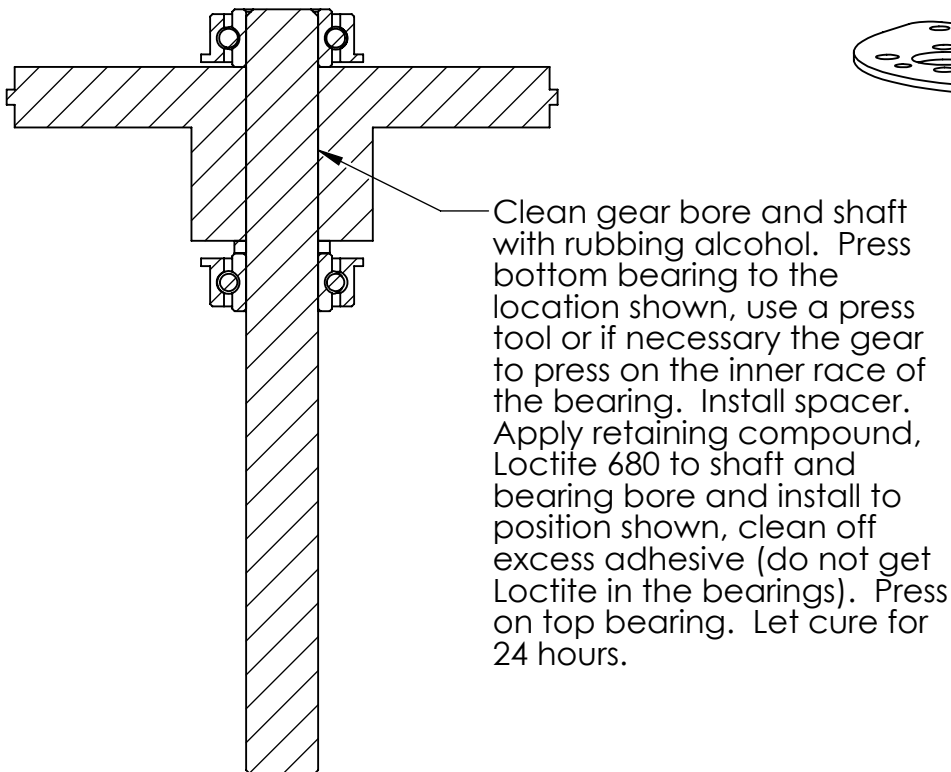
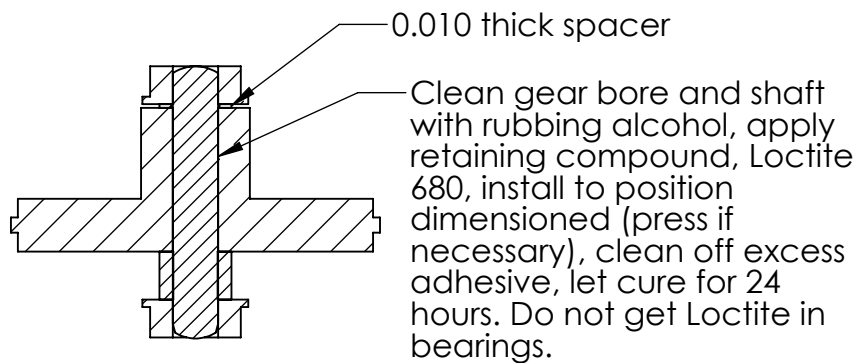


ARMABOT

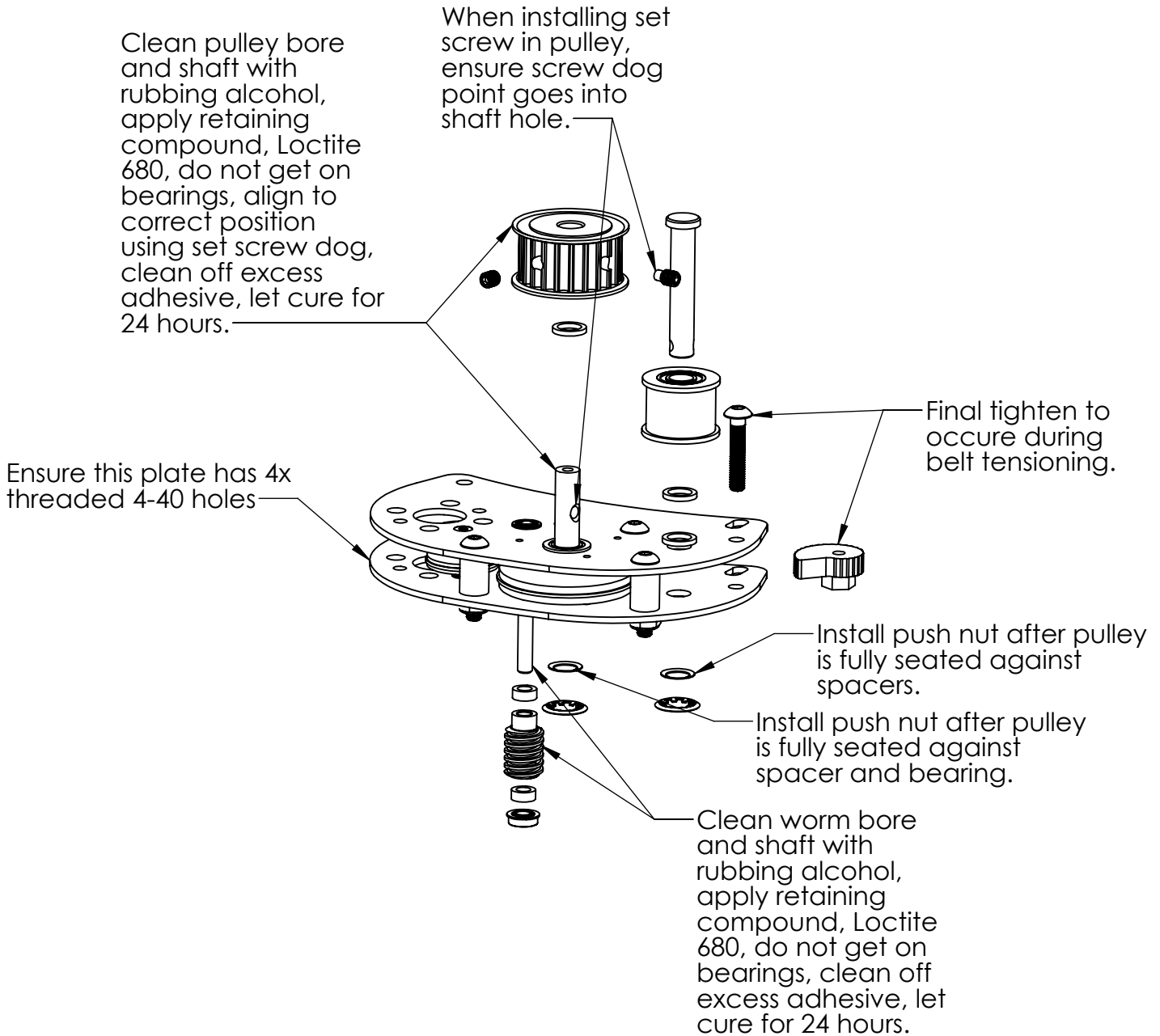
Turret240
P/N A0085

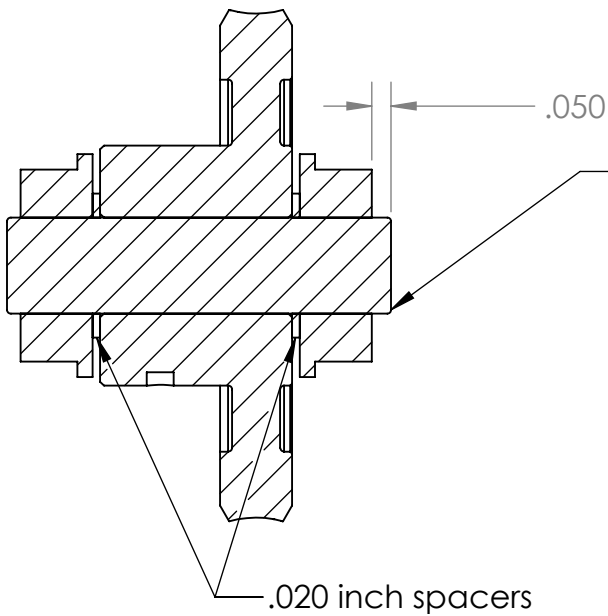
Installation Instructions

It is helpful to familiarize yourself with the CAD model before assembly. Also having the CAD model open during assembly can help identify parts and spacing. Read all of the directions before proceeding. Multiple curing steps are necessary, plan for a multi-day build.



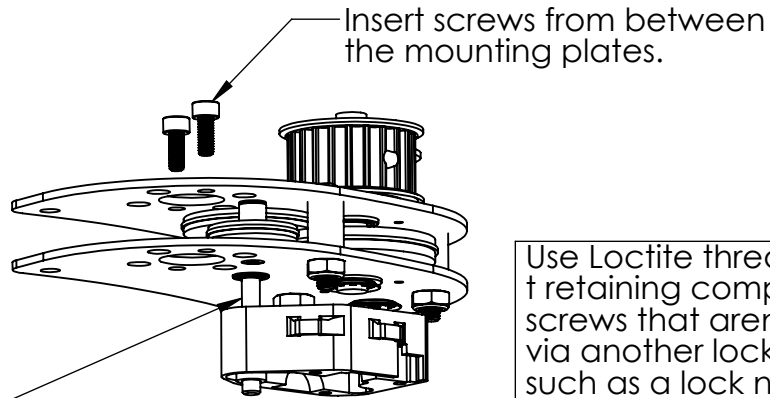
Use Loctite thread locker (not retaining compound) on all screws that aren't secured via another locking feature such as a lock nut.





Press sensor magnet shaft into parts as shown. Magnet is diametrically magnetized (it can't be put in backwards). Clean gear bore and shaft with rubbing alcohol, apply retaining compound, Loctite 680, install/press to position dimensioned, clean off excess adhesive, let cure for 24 hours. Do not get Loctite in the bearings.

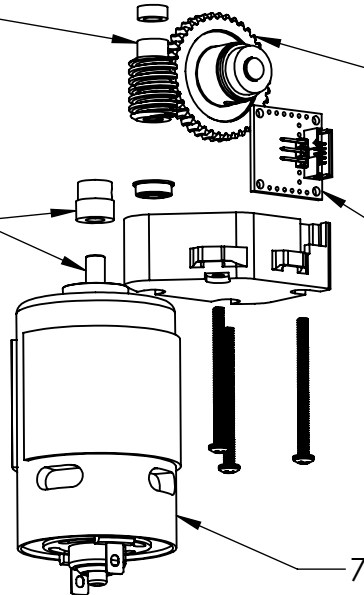
Clean gear bore and shaft with rubbing alcohol, apply retaining compound, Loctite 680, install to position dimensioned (press if necessary), clean off excess adhesive, let cure for 24 hours. Do not get Loctite in the bearings.



Use Loctite thread locker (not retaining compound) on all screws that aren't secured via another locking feature such as a lock nut.

Add grease to this gear.

Assemble drive motor unit. Clean motor shaft and gear bore with rubbing alcohol. Use Loctite 680 retaining compound to glue gear to shaft (press on if necessary), add set screw to secure position, let cure for 24 hours. Do not get Loctite in the motor bearings.



Sensor board come with 3 pin header for analog roboRIO or 10 pin ribbon connector for Talon SRX connection

775 series motor required

