

ROAV

Owner's Manual

Roav Smart Car Charger F2

Safety Instructions

Please read and understand all instructions before using this product. If damage is caused by failure to follow the instructions, the warranty does not apply.

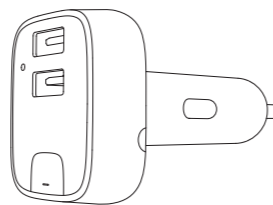
- Keep these instructions.
- Do not drop, puncture or disassemble this product.
- This product shall not be exposed to dripping or splashing.
- Avoid long exposure to direct sunlight, which may cause damage.
- Exposing this product to open flames may cause explosion.
- Do not use the product in strong magnetic field.
- Use clean, soft cloth to clean. Do not use any corrosive cleaner/oil to clean.
- Keep your attention on the road. Do not operate the controls of this product while driving.

Introduction

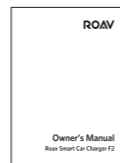
Features

- Hands-free call
- Stream music to car audio via FM transmitter
- AUX line out
- Dual USB charging ports
- PowerIQ with quick charge technology
- Companion Roav App with FM frequency modulation and car locator

What's Included

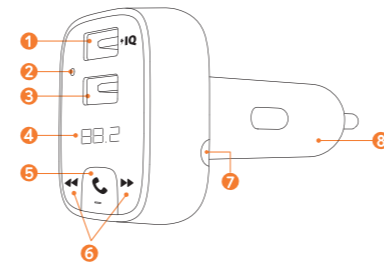


Roav Smart Car Charger F2



Manual

At a Glance

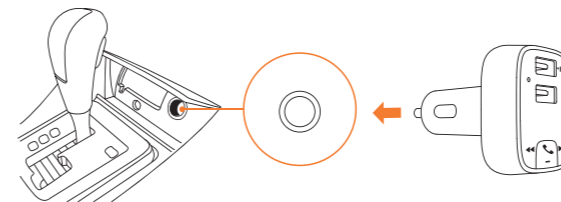


- 1 USB charging port
- 2 Microphone
- 3 USB charging port/USB flash drive port
- 4 LED display
- 5 / Multifunction button
- 6 /
- 7 AUX line out
- 8 Car charger adapter

LED indicators	Status
/ FM frequency flashes alternately	No Bluetooth connected and no flash drive detected
FM frequency is displayed	Bluetooth connected or flash drive detected
FM frequency flashes	Enter FM mode
	Incoming call
	In a call with hands-free
	In a call through smartphone

Get Started

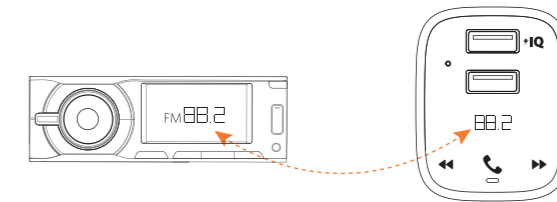
- 1 Plug Roav smart car charger into your vehicle's cigarette lighter socket.
- 2 Start your vehicle's engine and the LED display will light on. / FM frequency will flash alternatively. In case you have completed step 4, you would hear a voice prompt "waiting to pair".



- 3 Enable Bluetooth on your smartphone and search for Bluetooth devices available. Select "Roav F2_xxxx" and connect. Once successfully connected, FM frequency will be displayed and a voice prompt "successfully paired" will be heard.



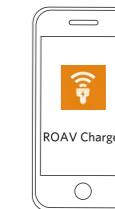
- 4 Turn on the FM radio on your car audio deck and tune to an unoccupied frequency (white noise). Press and hold the multifunction button on Roav smart car charger until FM frequency flashes. Press or hold / until the transmitting frequency matches the frequency selected on your car audio.



Roav Charger App

With the Roav Charger app, you can set FM frequencies, locate your car, upgrade software, and learn more about Roav smart car charger.

To download Roav Charger app, search "Roav Charger" in App Store or Google Play.



Download on the App Store

GET IT ON Google Play

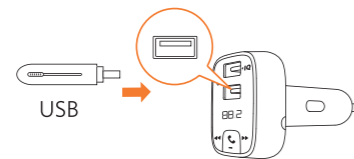
Apple and the Apple logo are trademarks of Apple Inc., registered in the U.S. and other countries. App Store is a service mark of Apple Inc., registered in the U.S. and other countries. Google Play and the Google Play logo are trademarks of Google Inc.



Model: R5111-US
51005000660 V02

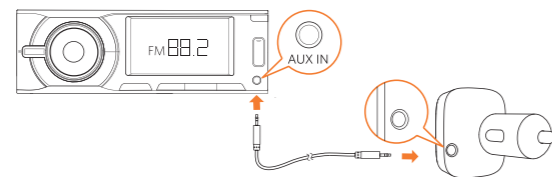
Play Music

When the Roav smart car charger is successfully connected with your smartphone, you can play music from your phone. Music can then be streamed to your car audio via FM transmitter. You can also enjoy music that are stored on a USB flash drive.



Play / Pause	Press
Previous / Next track	Press

To further reduce echo and cabin noise on your calls, you can connect a 3.5 mm AUX cable (not provided) to AUX line out socket of the Roav smart car charger and AUX IN socket of your car audio system.



7

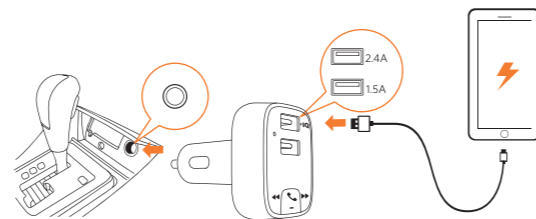
Hands-free Call

When the Roav smart car charger is successfully connected with your smartphone, you can enjoy convenient hands-free call.

Answer / End a call	Press
Reject a call	Press and hold for 1 second

Charge Your Devices

The Roav smart car charger contains dual USB charging ports. You can charge two devices at the same time with maximum output of 5V/3.9A.



8

Specifications

Specifications are subject to change without notice.

DC input: 12V - 24V

Power output: 5V \approx 3.9A Max

Bluetooth version: V4.2

Bluetooth transmission distance: 10 m / 393.7 in

Audio format: .mp3 .wma .flac .wav

FM frequency range: 87.5-108 MHz

FM transmission range: 2 m / 78.7 in

USB file system: FAT, FAT32, exFAT

Operating temperature range: -4°F to 104°F / -20°C to 40°C

Storage temperature range: -40°F to 185°F / -40°C to 85°C

9

Notice

FCC Statement

This device complies with Part 15 of the FCC Rules. Operation is subject to the following two conditions: (1) this device may not cause harmful interference, and (2) this device must accept any interference received, including interference that may cause undesired operation.

Warning: Changes or modifications not expressly approved by the party responsible for compliance could void the user's authority to operate the equipment.

Note: This equipment has been tested and found to comply with the limits for a Class B digital device, pursuant to Part 15 of the FCC Rules. These limits are designed to provide reasonable protection against harmful interference in a residential installation.

This equipment generates uses and can radiate radio frequency energy and, if not installed and used in accordance with the instructions, may cause harmful interference to radio communications. However, there is no guarantee that interference will not occur in a particular installation. If this equipment does cause harmful interference to radio or television reception, which can be determined by turning the equipment off and on, the user is encouraged to try to correct the interference by one or more of the following measures: (1) Reorient or relocate the receiving antenna. (2) Increase the separation between the equipment and receiver. (3) Connect the equipment into an outlet on a circuit different from that to which the receiver is connected. (4) Consult the dealer or an

10

experienced radio/TV technician for help.

FCC Radio Frequency Exposure Statement

The device has been evaluated to meet general RF exposure requirements. The device can be used in fixed/mobile exposure condition. The min separation distance is 20cm.

Customer Service

12-month limited warranty

Lifetime technical support

support@goroav.com

+1(800) 988 7973 (US) Mon-Fri 9:00-17:00 (PT)

@GoRoav

@GoRoav

11

12