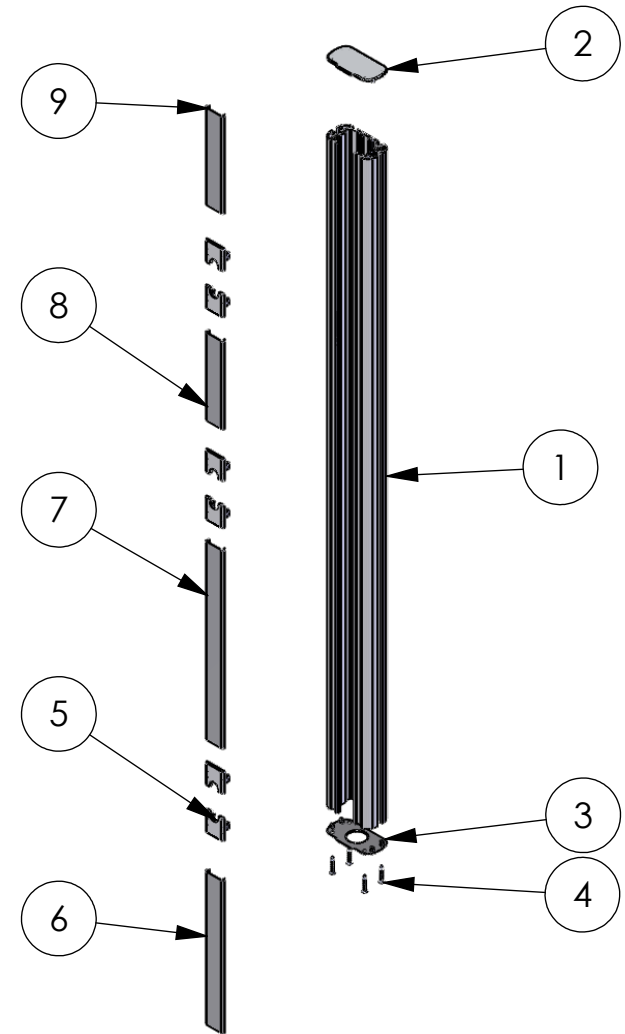
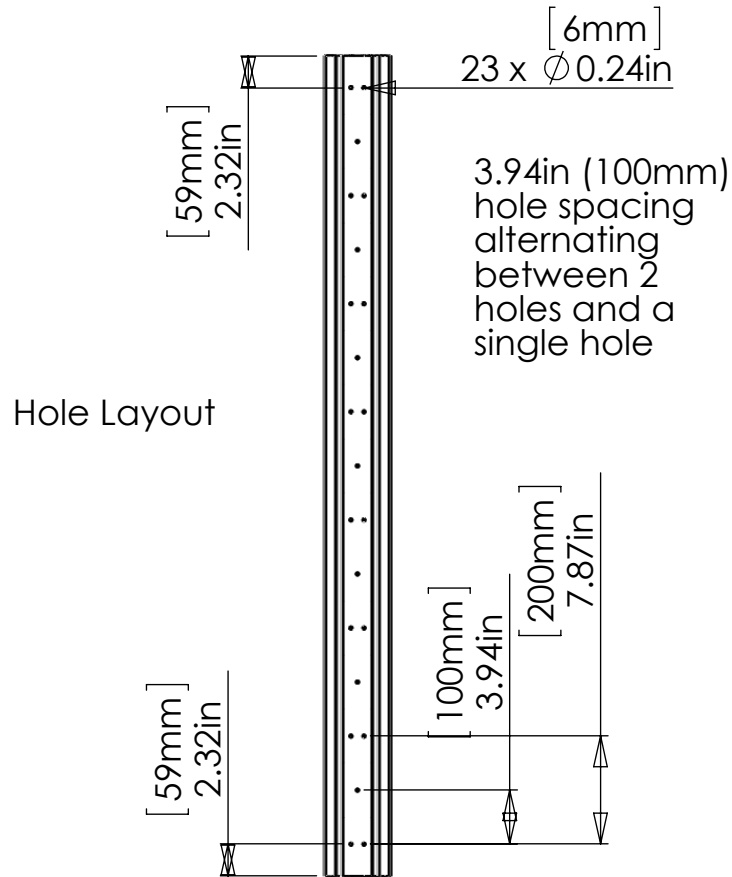


ITEM NO.	Part Number	REV	DESCRIPTION	QTY.
1	SAM0161/ESI1518	3	Apollo 6 ESI 5-95 1518mm (60inch)	1
2	SAM0158	0	DC Cap, Apollo6, Top Cap	1
3	SAM0159	2.7	Apollo 6, Bottom Cap	1
4	SAM0186		No. 10 Self Tapping screws 1 1/4 inch CSK	4
5	SAM0323	1	50mm Tile Horseshoe Cutout 22mm	6
6	SAM0259 / 347	1	Duct Cover 347mm	1
7	SAM0259 / 450	1	Duct Cover 450mm	1
8	SAM0259 / 200	1	Duct Cover 200mm	1
9	SAM0259 / 221	1	Duct Cover 221mm	1



**PROPRIETARY AND CONFIDENTIAL**  
 THE INFORMATION CONTAINED IN THIS DRAWING IS THE SOLE PROPERTY OF MODTEC. ANY REPRODUCTION IN PART OR AS A WHOLE WITHOUT THE WRITTEN PERMISSION OF MODTEC IS PROHIBITED.

**TOLERANCES**  
 ALL TOLERANCES UNLESS OTHERWISE SPECIFIED:  
 X.XX ± 0.05  
 X.X ± 0.1  
 X ± 0.5

**REVISIONS:**

REV	DATE	DRAWN	REASON
5	02/09/2011	MG	Corrected hole positions
4	07/04/2011	SC	First Issue

**COMMENTS:**

take care not to mark anodising when handling

DIMENSIONS ARE IN MM DO NOT SCALE DRAWING

	NAME	DATE
DRAWN	MG	02/09/2011
CHECKED		
APPROVED	BD	14/03/2013
MATERIAL:		
FINISH:		
WEIGHT:		

**MODTEC INDUSTRIES LTD**

DESCRIPTION: Apollo6 Wallmount 60inch

PART NUMBER: A6-W5-95-15S

REVISION: 5

SCALE: 1:14

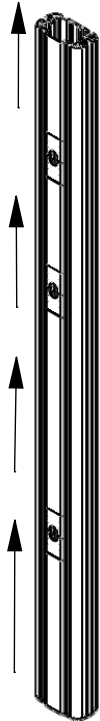
SHEET 1 OF 2

FILE NAME: A6-W5-95-15S rev5 A6Wall60inch

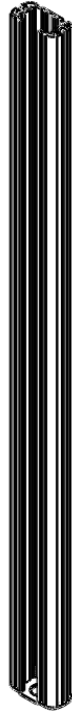
1. Push off Top Cap



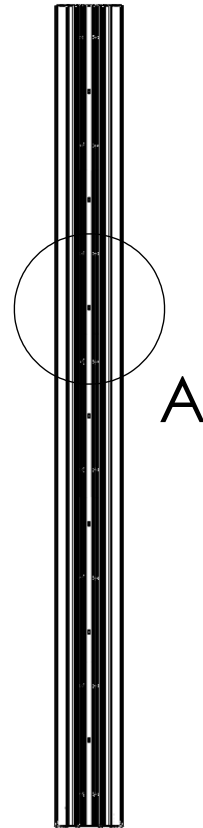
2. Slide out all duct covers and horseshoe tiles



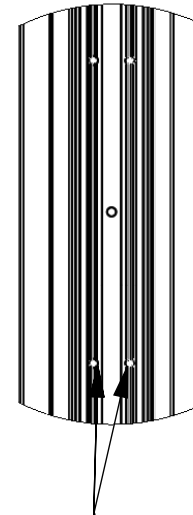
3. Place Apollo6 on wall where desired



4. Screw the Apollo6 directly to the wall with appropriate fasteners (not supplied)

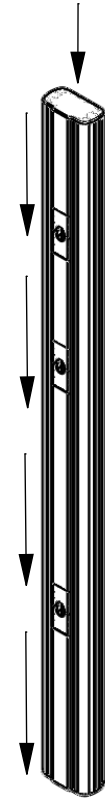


DETAIL A  
SCALE 1 : 5



Holes in Apollo6 suitable for standard fasteners

5. Once installed, do step two in reverse, then replace the top cap



**PROPRIETARY AND CONFIDENTIAL**  
THE INFORMATION CONTAINED IN THIS DRAWING IS THE SOLE PROPERTY OF MODTEC. ANY REPRODUCTION IN PART OR AS A WHOLE WITHOUT THE WRITTEN PERMISSION OF MODTEC IS PROHIBITED.

**TOLERANCES**  
ALL TOLERANCES UNLESS OTHERWISE SPECIFIED:  
X.XX ± 0.05  
X.X ± 0.1  
X ± 0.5

REVISIONS:			
REV	DATE	DRAWN	REASON

**COMMENTS:**

# Mounting Instructions

DIMENSIONS ARE IN MM DO NOT SCALE DRAWING

	NAME	DATE
DRAWN		
CHECKED		
APPROVED		
MATERIAL:		
FINISH:		
WEIGHT:		

<b>MODTEC INDUSTRIES LTD</b>	
DESCRIPTION: Apollo6 Wallmount 60inch	
PART NUMBER: A6-W5-95-15S	
REVISION: 5	
SCALE: 1:14	SHEET 2 OF 2
<small>FILE NAME: A6-W5-95-15S rev5 A6Wall60inch</small>	