

PRODUCT DOCUMENTATION



Product Name: Mirror/Glass Shelf Bracket Ø14x170mm

Article Number: 14.7000.02.170

Satin stainless steel

16.7000.01.176

Polished stainless steel

Photo:



Drawing:



Product Information:

Material: AISI 316 stainless steel
Surface finish: Satin 320 grain or polished
Material thickness/radius: Ø14
Height: 59mm Width: 14mm Depth: 205mm

Product Specification:

d line Mirror/glass shelf bracket Ø14x205 c/c 45mm with concealed fixing AISI 316 satin stainless steel.

d line Mirror/glass shelf bracket Ø14x205 c/c 45mm with concealed fixing AISI 316 polished stainless steel

NOTE - Glass shelf requires 2.6mm holes

The high humidity levels in the bathroom setting necessitates the use of a non-corrosive rust-resistant stainless steel. The only metal used in d line's bathroom fittings is AISI 316, also known as marine quality stainless steel.

Certificate: -
Warranty: 20 years (non-mechanical/-electronic parts)

Spare Parts/Accessories:

P0.0000.00.451 Screw and plug set
14.9701.00.052 Grub screw M4x3mm

Related Products:

14.7005.00.102 Tempered glass shelf 6x630x170mm
14.7010.02.009 Mirror holder Ø14mm, satin
16.7010.01.005 Mirror holder Ø14mm, polished
14.7015.00.009 Mirror foam pads

Mounting:

Drill template included.

Packing:

1 pc. in a bag, 10 pcs. per box incl. screws Ø4.5x70mm with plugs 8x40mm for fixing on concrete wall.

Maintenance:

Wash down with mild detergent, rinse off with clean water, and dry off with soft dry cloth.

Environment:

No environmental risk and no risk of fire.

PRODUCT DOCUMENTATION



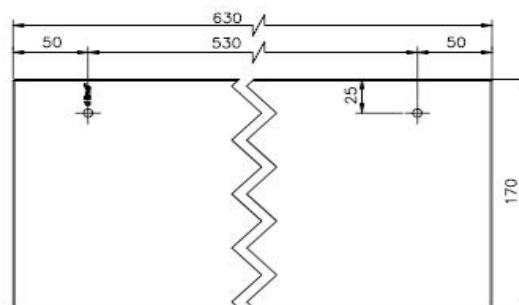
Product Name: Tempered Glass Shelf, 6x630x170mm

Article Number: 14.7005.00.102
Tempered glass

Photo:



Drawing:



Product Information:

Material: Tempered Glass
Surface finish: -
Material thickness/radius: 6mm
Height: 6mm Width: 630mm Depth: 170mm

Product Specification:

d line Tempered glass shelf with polished edges 6x630x170mm

Certificate: -
Warranty: 20 years (non-mechanical/-electronic parts)

The high humidity levels in the bathroom setting necessitates the use of a non-corrosive rust-resistant stainless steel. The only metal used in d line's bathroom fittings is AISI 316, also known as marine quality stainless steel.

Spare Parts/Accessories:

-

Related Products:

14.7000.02.170 Mirror/glass shelf bracket Ø14x170mm
16.7000.01.176 Mirror/glass shelf bracket Ø14x170mm

Mounting:

-

Packing:

1 pc. in a bag, 10 pcs. per box.

Maintenance:

Wash down with mild detergent, rinse off with clean water, and dry off with soft dry cloth.

Environment:

No environmental risk and no risk of fire.

PRODUCT DOCUMENTATION



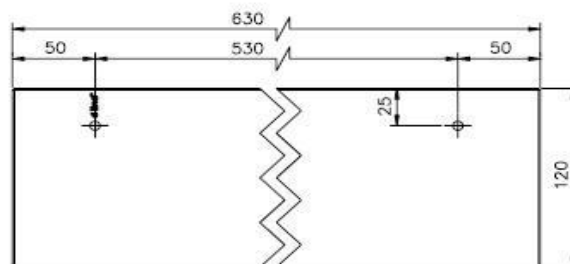
Product Name: Tempered Glass Shelf 6x630x120mm

Article Number: 14.7005.00.056
Tempered glass

Photo:



Drawing:



Product Information:

Material: Tempered Glass
Surface finish: -
Material thickness/radius: 6mm
Height: 6mm Width: 630mm Depth: 120mm

Product Specification:

d line Tempered glass shelf with polished edges 6x630x120mm.

Certificate: -
Warranty: 20 years (non-mechanical/-electronic parts)

The high humidity levels in the bathroom setting necessitates the use of a non-corrosive rust-resistant stainless steel. The only metal used in d line's bathroom fittings is AISI 316, also known as marine quality stainless steel.

Spare Parts/Accessories:

-

Related Products:

- 14.7000.02.129 Mirror shelf bracket Ø14x120mm
- 14.7005.00.013 Tempered glass shelf 6x470x120mm
- 16.7000.01.125 Mirror shelf bracket Ø14x120mm, polished

Mounting:

-

Packing

1 pc. in a bag, 10 pcs. per box

Maintenance:

Wash with glass cleaner.

Environment:

No environmental risk and no risk of fire.