

d line
KNUD HOLSCHER DESIGN

Bathroom



Royal Danish Playhouse, Copenhagen

distributed in North America by :



1-800-362-1484
www.BridgeportWorldwide.com

Contents

| | | | |
|-----------------------------|----|-----------------------------------|-----|
| Bathroom accessories | 3 | Paper towel dispenser | 50 |
| References | 5 | Plastic cup dispenser | 52 |
| Coat hooks | 8 | Tissue dispenser | 54 |
| Towel shelf Ø14mm | 10 | Sanitary bag dispenser | 56 |
| Mirror shelf | 12 | Waste bins slim | 58 |
| Mirror holders | 14 | Waste bins large | 60 |
| Mirror screws Ø19mm | 14 | Toilet seat cover dispenser | 62 |
| Soap dish | 16 | Hand dryer w/sensor | 64 |
| Shampoo shelf | 18 | Soap dispenser | 66 |
| Soap holder | 20 | Double soap dispenser | 68 |
| Glass holder | 22 | Maxi toilet roll holder | 70 |
| Toothbrush holder | 24 | Grab rail Ø32mm | 72 |
| Towel rail Ø14mm | 26 | Hinged cantilever grab rail | 74 |
| Towel rail Ø19mm | 28 | Toilet roll holder | 76 |
| Hook | 28 | Washroom panels – Module overview | 77 |
| Shower door set | 30 | Washroom panels – assembly plan | 78 |
| Swing towel rail Ø14mm | 32 | Washroom panels – measurements | 79 |
| Toilet roll holder Ø14mm | 34 | Washroom panels | 80 |
| Kitchen roll holder Ø14mm | 36 | Blank panel | 82 |
| Toilet brush set | 40 | Soap dispenser | 84 |
| Bathroom box set | 42 | Toilet roll holder | 86 |
| Bottle opener and ashtray | 44 | Paper towel dispenser | 88 |
| Square pictograms 175x175mm | 46 | Hand dryer | 90 |
| Pictograms | 48 | Waste paper bin | 92 |
| | | Tissue dispenser | 94 |
| | | Toilet seat cover dispenser | 96 |
| | | Sanitary bag dispenser | 98 |
| | | Plastic cup dispenser | 100 |
| | | Miscellaneous | 102 |

Bathroom accessories



The bathroom is an essential part of any building. Whether you are entering a private home or office building, the bath or restrooms reflect what kind of building you're in and significantly impacts, not only the comfort but the general impression of the building of its visitors. That places great demands on design and it requires a personal touch to design a space that gives off an air of cleanliness, hygiene, functionality and accessibility. The quality of this room sends a clear message to the users of the state of affairs in a building. For these reasons, today's bathrooms are given the highest priority. The main focus is directed towards form, function and quality. All d line accessories for the bathroom, washroom and shower are simple and based on impeccable design solutions, intrinsic functionalism and installation techniques developed through years of invaluable experience. Hygiene and maintenance are prevalent concerns in the products' design phase and installation and maintenance is kept easy, which is paramount, particularly in a commercial setting.

d line's bathroom series is all-inclusive and also includes a line of products to accommodate the need for easy access for the disabled. The products in this line remain decorative whilst focusing on user friendliness and all meet the requirements of design, while providing for the diverse and challenging needs of people with disabilities.

Products

- Dispensers and bins
- Disabled
- Washroom
- Bathroom accessories





The Bank, Amsterdam

Material matters

All accessories are manufactured in marine quality stainless steel. The high humidity level in the bathroom setting necessitates the use of a non-corrosive rust resistant stainless steel. The only steel used in our complete product program is AISI 316, also known as marine quality stainless steel. AISI 316 is one of the strongest and most resilient alloys on the market today.

Cleaning, care and maintenance

Stainless steel is easy to clean. Washing with soap or a mild detergent and warm water followed by a clean water rinse is usually quite adequate for domestic and architectural equipment. An enhanced appearance will be achieved if the cleaned surface is finally wiped dry. Specific methods of cleaning may apply and if so instructions will be provided.

Design continuity

From the perspective of design, d line conceptualises its products in terms of an interrelated continuity. The quality standard is revealed in each and every product, from soap dish to towel rack to waste bin and paper towel dispenser. In the words of d line's head designer, Knud Holscher:

"There is a certain implicit advantage to having an architect work within the field of industrial design. Architects view the individual design product within the scope of the architectural space that it is meant to occupy. I perceive architectural space as a whole, where the bathroom is an equal and, most importantly, an integral part of the building."



The Bank, Amsterdam



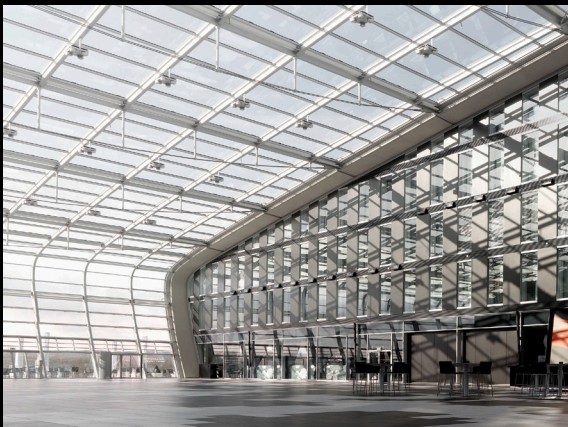
References



The Bank

Owner Kroonenberg Group
Builder Midreth BV
Architect Rijnboutt Architecten
Client Intermat Mijdrecht
Country Netherlands

The Bank was built between 1926 and 1932 and was the first ABN Bank in Amsterdam. The design of this typical example of solid stateliness was in the hands of architects B.J. and W.B. Ouëndag, as well as the founder of the Amsterdam School of Architecture, H.P. Berlage.



The Kameha Grand

Interior designer Marcel Wanders
Size 19,000 sq.m
Architect Karl-Heinz Schommer
Client Lifestyle Hospitality & Entertainment Group
Country Germany

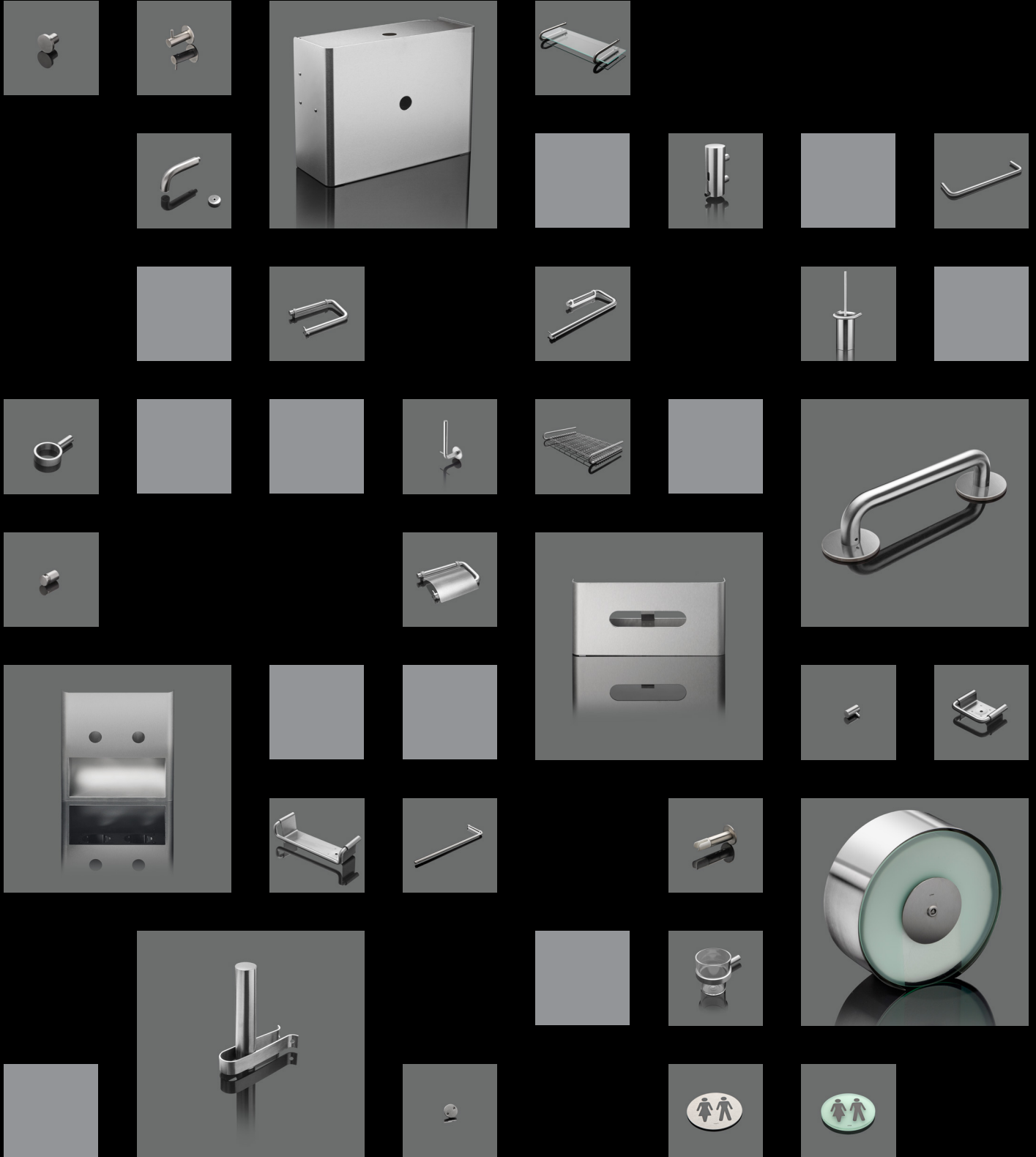
The Kameha Grand Bonn opened in late autumn 2009; it has 254 rooms, including 62 suites and a flexible partitionable conference or ballroom that can accommodate up to 2,500 guests. The Kameha Grand Bonn has won the prestigious MIPIM Award and the international Real Estate Industry Award. The hotel impressed tradeshow visitors and the jury in the category "Hotels & Touristic Resorts."



Bella Sky Comwell Copenhagen

Owner and developer Bella Center
Architect 3XN
Floor area 42,000 sq.m. (814 rooms / 23 floors)
Country Denmark

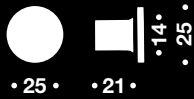
Bella Sky Comwell is a four star conference hotel, adjacent to Bella Convention & Congress Center in the Ørestad district of Copenhagen. With 814 rooms, it is the largest hotel in Scandinavia. Consisting of two asymmetrical towers, the hotel's form depends on the vantage point. The towers are distinguished by a dynamic and graphic skin of triangular panels, and even from a great distance, the slightly pixelating effect is visible. The lobby merges into the entrance of the Bella Center and causes a twist of the ground floor, lending the hotel a dramatic street presence.



Coat hooks



Coat hooks



Description

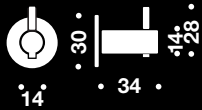
Ø25mm head, w/bush, Ø25x21mm

Ø25mm head, thread M5, Ø25x21mm

Item number

14.5600.02.000

14.5600.02.107



W/Pin, w/bush, Ø30mm rose, Ø14x34mm

14.5605.02.002



W/bush, Ø14x23mm

14.5610.02.003

W/thread M5, Ø14x23mm

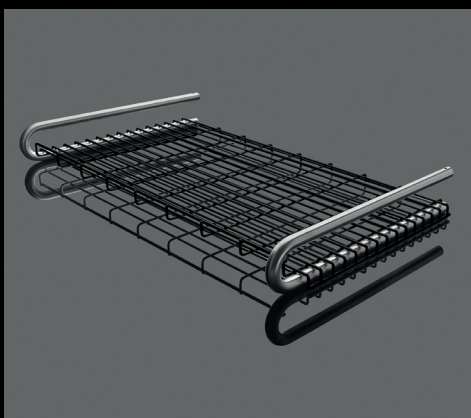
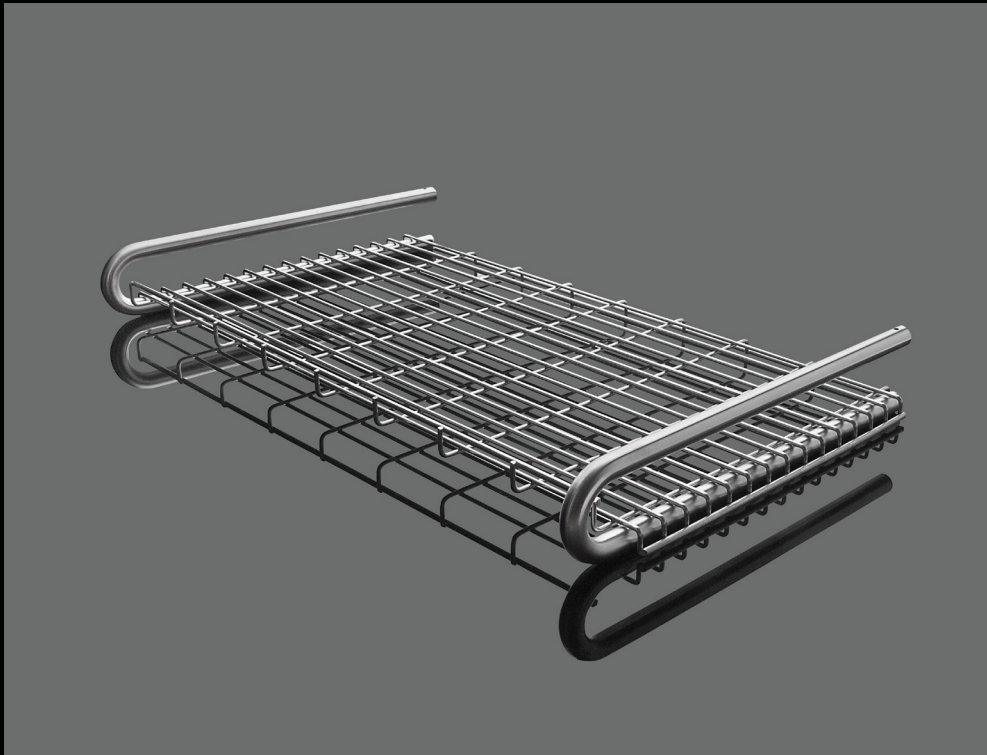
14.5610.02.101



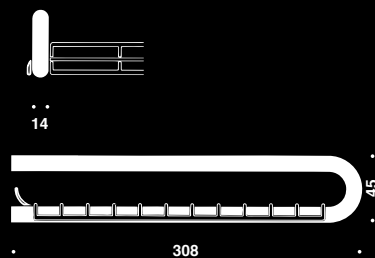
W/thread M5, Ø10x17mm

14.3816.02.011

Towel shelf Ø14mm



Towel shelf Ø14mm



Description

W/White shelf Ø14mm, 308x500mm

W/Grey shelf Ø14mm, 308x500mm

W/Stainless steel shelf Ø14mm, 308x500mm

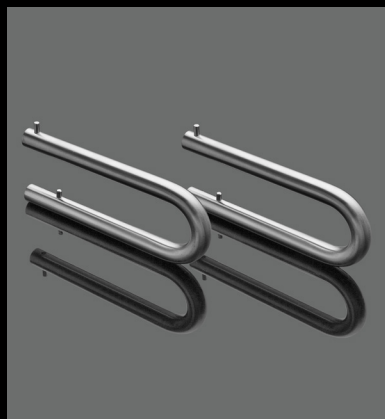
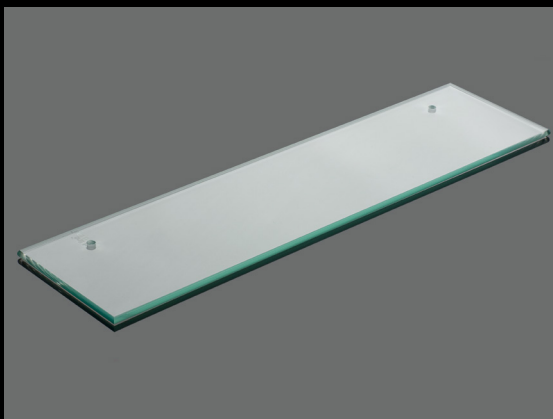
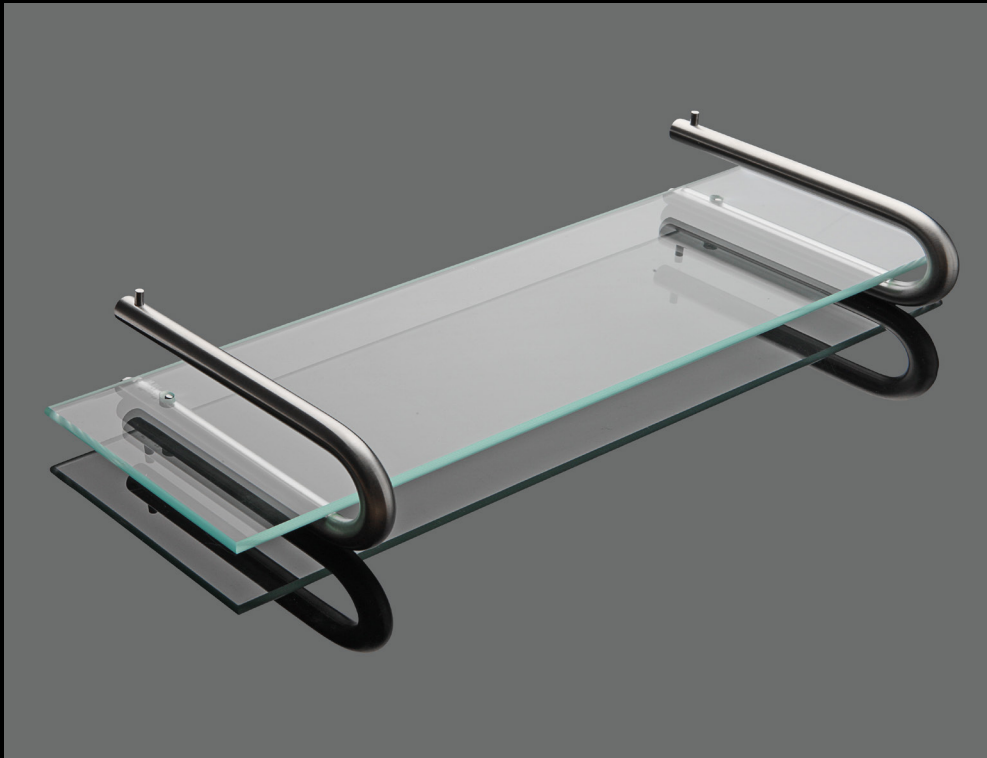
Item number

14.7024.02.500

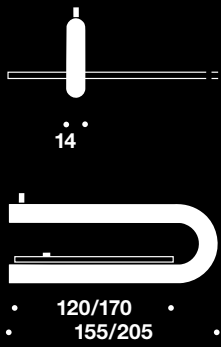
14.7025.02.501

14.7026.02.506

Mirror shelf



Mirror shelf



Description

Bracket Ø14x120mm

Bracket Ø14x170mm

Glass shelf 470x120mm, tempered glass

Glass shelf 630x120mm, tempered glass

Glass shelf 630x170mm, tempered glass

Item number

14.7000.02.129

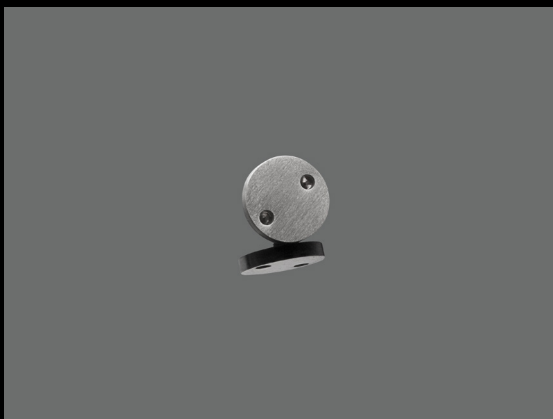
14.7000.02.170

14.7005.00.013

14.7005.00.056

14.7005.00.102

Mirror holders



Mirror holders



Description

Ø14x25mm, w/bush

Item number

14.7010.02.009

Foam pads, 4 pcs

14.7015.00.009

Mirror screws Ø19mm



Description

Screw Ø19mm 3,5x30mm, w/deck bolt

Item number

14.7020.02.304

Screw Ø19mm 3,5x40mm, w/deck bolt

14.7020.02.401

Screw Ø19mm 3,5x50mm, w/deck bolt

14.7020.02.509

Deck bolt, M3

14.7020.02.002

Screw f/deck bolt, 30mm

14.7020.92.303

Screw f/deck bolt, 40mm

14.7020.92.401

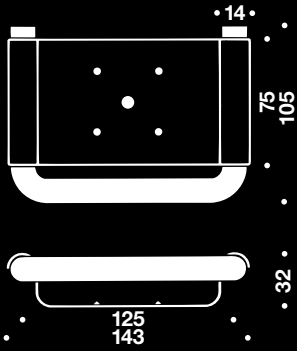
Screw f/deck bolt, 50mm

14.7020.92.508

Soap dish



Soap dish



Description

W/white shelf Ø14mm, 144x34x105mm

W/grey shelf Ø14mm, 144x34x105mm

W/stainless steel shelf Ø14mm, 144x34x105mm, theft proof

Item number

14.7034.02.128

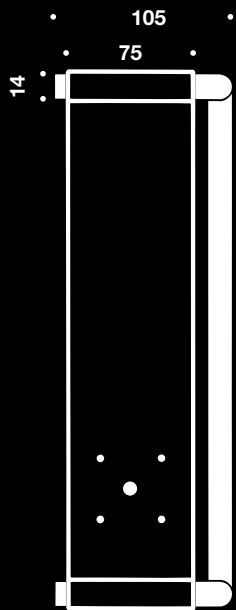
14.7035.02.122

14.7036.02.127

Shampoo shelf



Shampoo shelf



Description

W/white shelf Ø14mm, 318x78x75mm

W/grey shelf Ø14mm, 318x78x75mm

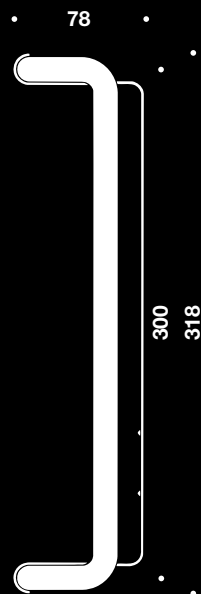
W/stainless steel shelf Ø14mm, 318x78x105mm, theft proof

Item number

14.7029.02.305

14.7030.02.308

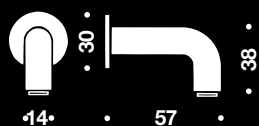
14.7031.02.302



Soap holder

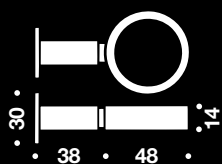


Soap holder



Description
Ø14mm w/magnet, 57x38mm

Item number
14.7044.02.008



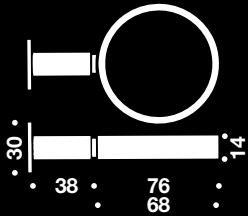
Description
Ø14/48mm w/ring, 88mm

Item number
14.7040.02.000

Glass holder



Glass holder



Description

Ø14mm,76x116mm, w/o glass

Ø14mm,76x116mm, w/glass

Glass, frosted

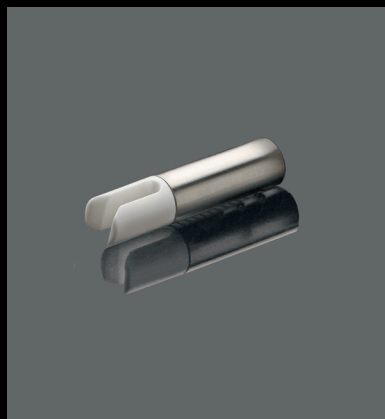
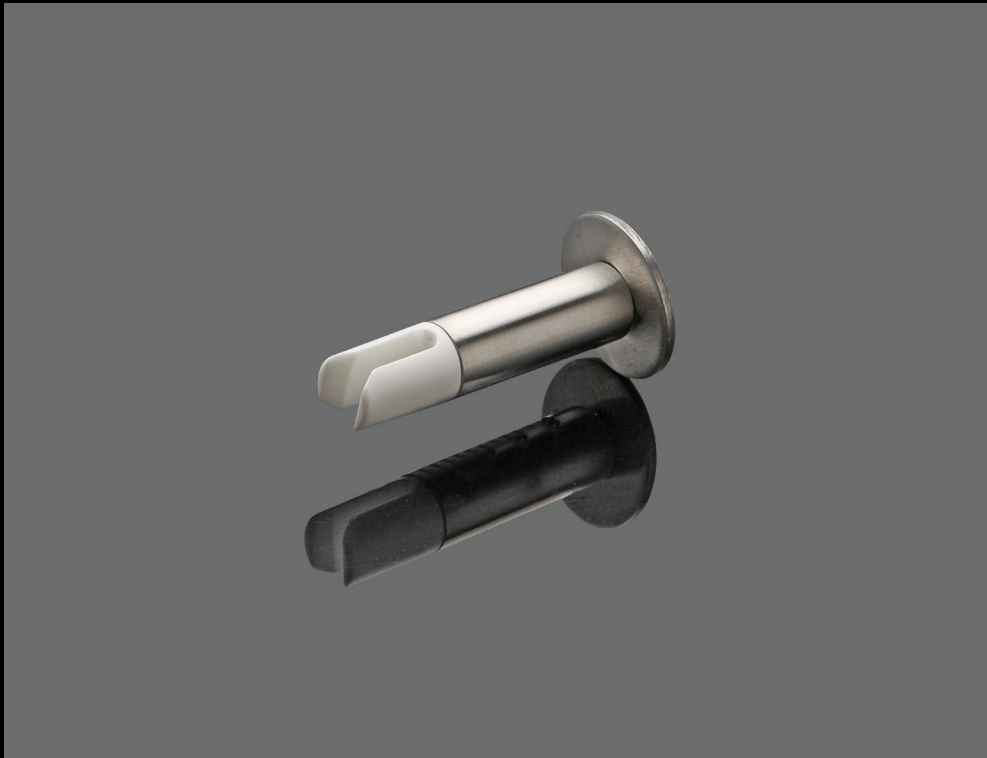
Item number

14.7042.02.009

14.7042.02.109

14.7042.00.105

Toothbrush holder



Toothbrush holder



Description

Ø14x58mm, white

Ø14x58mm, black

Item number

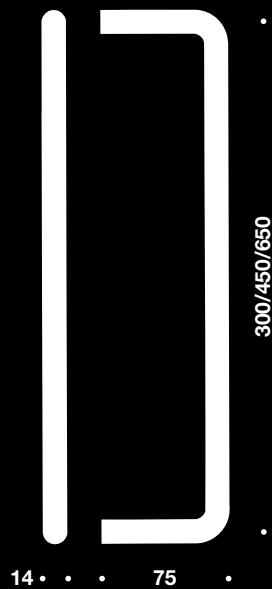
14.7043.02.003

14.7043.02.054

Towel rail Ø14mm



Towel rail Ø14mm



Description

Bush cc300mm

Bush cc450mm

Bush cc650mm

Bush cc0000-0300mm

Bush cc0301-0400mm

Bush cc0401-0500mm

Bush cc0501-0600mm

Bush cc0601-0700mm

Bush cc0701-0800mm

Bush cc0801-0900mm

Bush cc0901-1000mm

Bush cc1001-1100mm

Bush cc1101-1200mm

Item number

14.7050.02.305

14.7050.02.453

14.7050.02.658

14.7050.02.706

14.7050.02.714

14.7050.02.722

14.7050.02.731

14.7050.02.749

14.7050.02.757

14.7050.02.765

14.7050.02.773

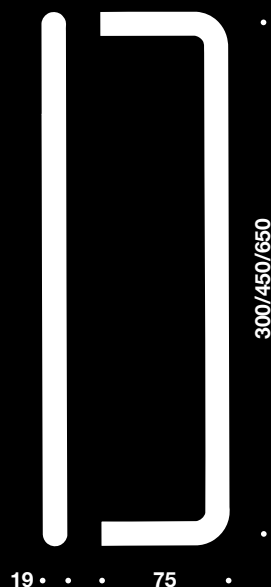
14.7050.02.781

14.7050.02.790

Towel rail and hook Ø19mm



Towel rail Ø19mm



Description

Bush cc300mm

Bush cc450mm

Bush cc650mm

Bush cc0000-0300mm

Bush cc0301-0400mm

Bush cc0401-0500mm

Bush cc0501-0600mm

Bush cc0601-0700mm

Bush cc0701-0800mm

Bush cc0801-0900mm

Bush cc0901-1000mm

Bush cc1001-1100mm

Bush cc1101-1200mm

Item number

14.7052.02.304

14.7052.02.452

14.7052.02.657

14.7052.02.702

14.7052.02.711

14.7052.02.729

14.7052.02.737

14.7052.02.745

14.7052.02.753

14.7052.02.761

14.7052.02.770

14.7052.02.788

14.7052.02.796

Hook



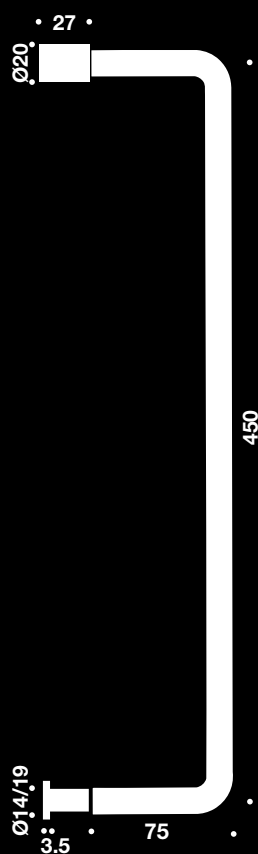
F/Ø19mm rails, Ø6x60mm

14.4250.02.008

Shower door set



Shower door set



Description

Ø14x450mm, w/door stop

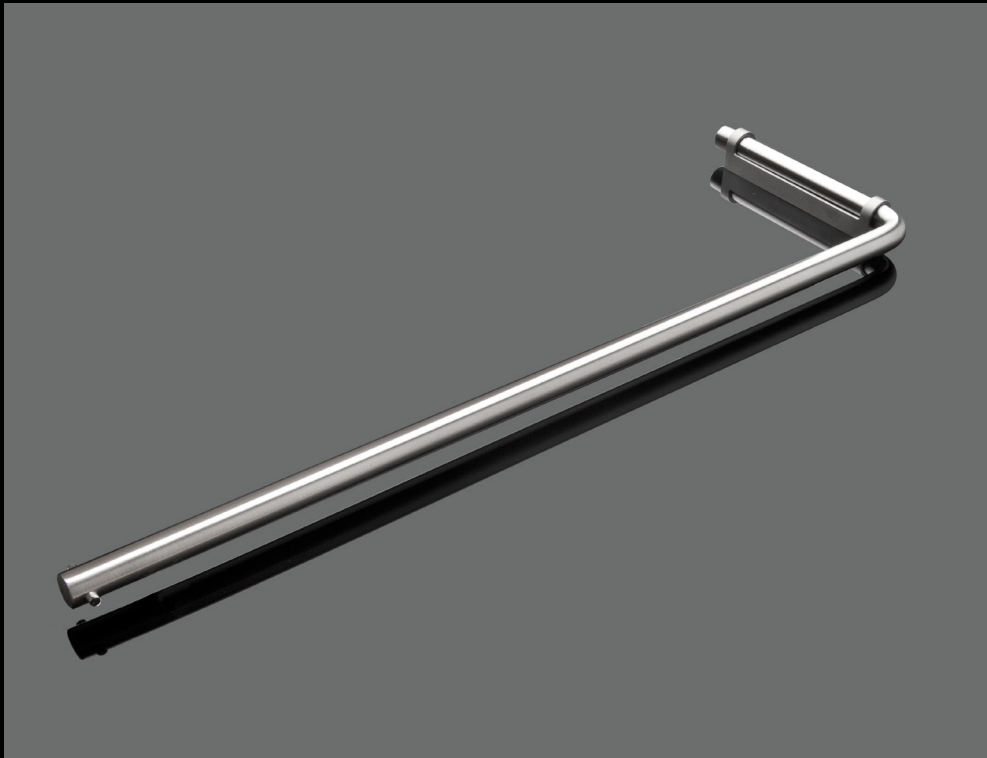
Ø19x450mm, w/door stop

Item number

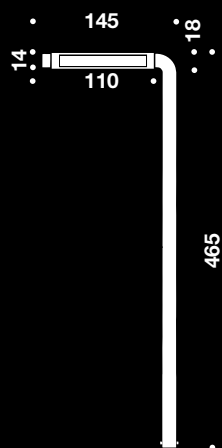
14.7050.02.450

14.7052.02.450

Swing towel rail Ø14mm



Swing towel rail Ø14mm



Description

W/white bracket, 145x465mm

W/black bracket, 145x465mm

W/bead blasted stainless steel bracket, 145x465mm

W/brushed stainless steel bracket, 145x465mm

Item number

14.7053.02.460

14.7054.02.460

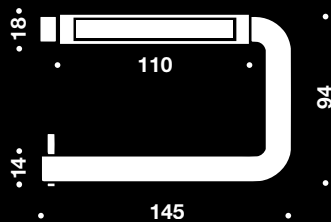
14.7054.02.465

14.7054.02.463

Toilet roll holder Ø14mm



Toilet roll holder Ø14mm



Description

- W/white bracket, 145x94mm
- W/black bracket, 145x94mm
- W/bead blasted stainless steel bracket, 145x94mm
- W/brushed stainless steel bracket, 145x94mm
- Stainless steel cover f/toilet roll holder

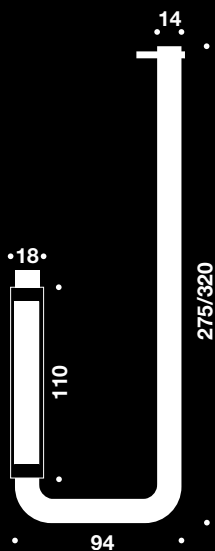
Item number

- 14.7055.02.140
- 14.7056.02.141
- 14.7056.02.242
- 14.7056.02.243
- 14.7056.02.250

Kitchen roll holder Ø14mm



Kitchen roll holder Ø14mm



Description

- W/white bracket, 275x94mm
- W/black bracket, 275x94mm
- W/bead blasted stainless steel bracket, 275x94mm
- W/brushed stainless steel bracket, 275x94mm

Item number

- 14.7057.02.270
- 14.7058.02.271
- 14.7059.02.272
- 14.7059.02.273

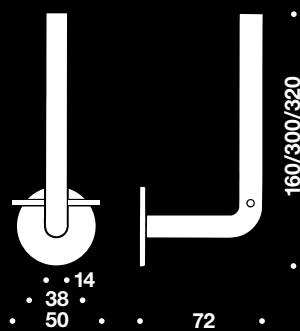
- W/white bracket 320x94mm
- W/black bracket 320x94mm
- W/Bead blasted stainless steel bracket,
- W/brushed stainless steel bracket, 320x94mm

- 14.7057.02.320
- 14.7058.02.328
- 14.7059.02.325
- 14.7059.02.323

Spare roll holder



Spare roll holder



Description

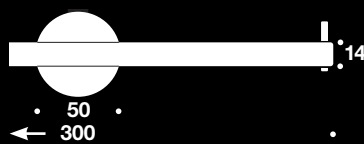
W/snap on cover 72x160mm

W/snap on cover 72x320mm

Item number

14.7062.02.016

14.7062.02.010



W/snap on cover 72x300mm

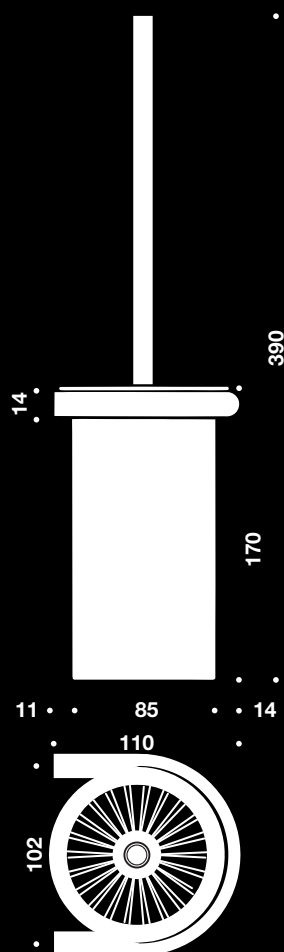
14.7062.02.020



Toilet brush set



Toilet brush set



Description

Set w/stainless steel handle, grey brush
Theft proof set, w/stainless steel handle, grey brush

Grey brush incl. Inliner
Stainless steel handle

Item number

14.7061.02.100

14.7061.02.102

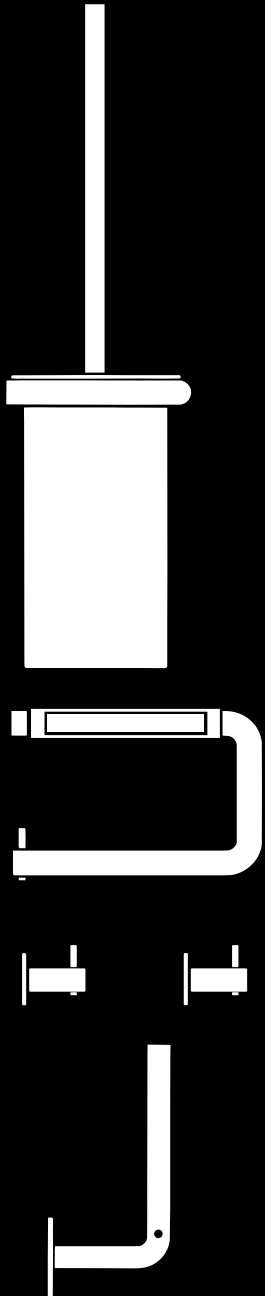
14.7061.25.134

14.7061.02.020

Bathroom box set



Bathroom box set



Description

Bathroom set

Toilet brush holder and brush 1

Toilet roll holder w/ stainless steel bracket 1

Coat hook w/pin 2

Spare roll holder 1

Item number

14.7060.02.007

Bottle opener and ashtray

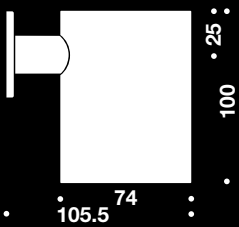


Bottle opener and ashtray



Description
W/Ø50mm snap on cover rose

Item number
14.7071.02.000



Turnable w/snap on cover rose Ø74mm, 100x105mm

14.7065.02.000

Square pictograms 175x175mm



Square pictograms 175x175mm



Description

- Female
- Male
- Unisex
- Disabled
- Telephone
- Cloakroom
- Nursery
- Restaurant
- Coffee
- No Smoking
- Smoking
- Directional arrow

Item number

- 14.3777.02.019
- 14.3777.02.027
- 14.3777.02.035
- 14.3777.02.043
- 14.3777.02.051
- 14.3777.02.060
- 14.3777.02.078
- 14.3777.02.086
- 14.3777.02.094
- 14.3777.02.108
- 14.3777.02.116
- 14.3777.02.124

Pictograms



Pictograms



Ø76

Description

Frosted acrylic, male
 Frosted acrylic, female
 Frosted acrylic, unisex
 Frosted acrylic, fire door keep shut
 Frosted acrylic, fire door keep locked
 Frosted acrylic, disabled

Item number

14.3797.02.349
 14.3797.02.353
 14.3797.02.357
 14.3797.02.361
 14.3797.02.365
 14.3797.02.369

Stainless steel, male
 Stainless steel, female
 Stainless steel, unisex
 Stainless steel, fire door keep shut
 Stainless steel, fire door keep locked
 Stainless steel, disabled

14.3797.02.350
 14.3797.02.354
 14.3797.02.358
 14.3797.02.362
 14.3797.02.366
 14.3797.02.370



86

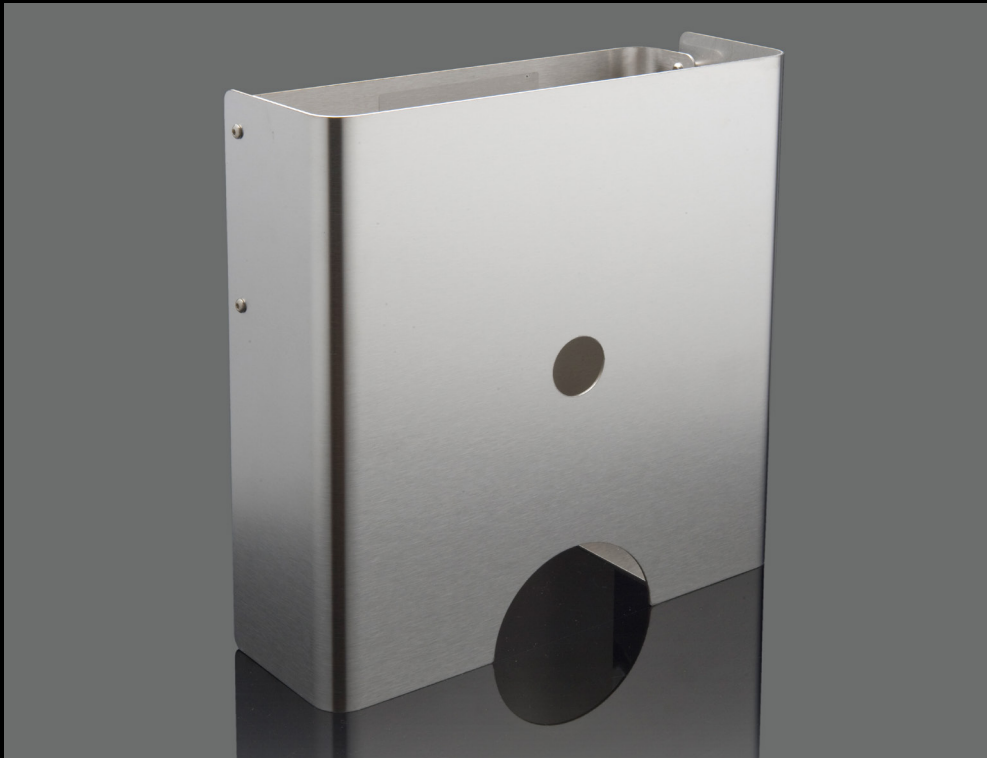
Stainless steel square, male
 Stainless steel square, female
 Stainless steel square, unisex
 Stainless steel square, fire door keep shut
 Stainless steel square, fire door keep locked
 Stainless steel square, disabled

14.3797.02.351
 14.3797.02.355
 14.3797.02.359
 14.3797.02.363
 14.3797.02.367
 14.3797.02.371

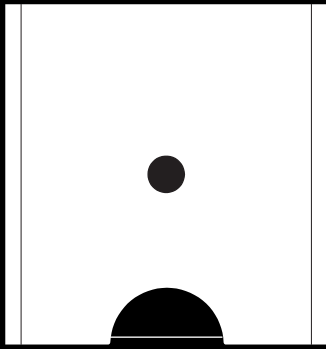
Frosted acrylic square, male
 Frosted acrylic square, female
 Frosted acrylic square, unisex
 Frosted acrylic square, disabled

14.3797.02.400
 14.3797.02.401
 14.3797.02.402
 14.3797.02.403

Paper towel dispenser



Paper towel dispenser



Description

W/o lid, 285x300x123mm can contain 2 bundles of paper
 W/lid, 285x300x123mm can contain 2 bundles of paper

Maxi, w/o lid, 285x600x113mm can contain 4 bundles of paper
 Maxi, w/lid, 285x600x113mm can contain 4 bundles of paper

Lid f/paper towel dispenser

Paper towels f/dispenser, 21 bundles of 145 psc

Item number

14.7080.02.004

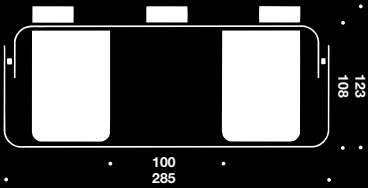
14.7080.02.005

14.7080.02.204

14.7080.02.205

14.7080.00.004

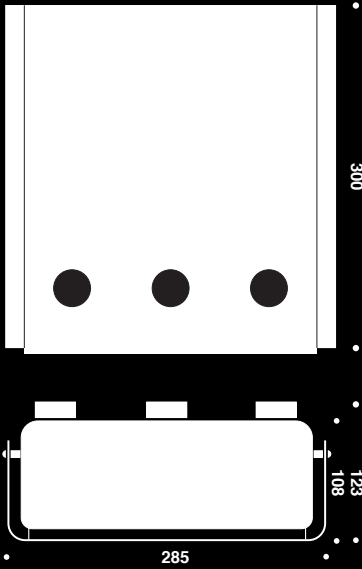
14.7080.00.000



Plastic cup dispenser



Plastic cup dispenser



Description

285x300x123mm

Plastic cups f/dispenser, 21cl, 30 tubes of 100 psc

Item number

14.7099.02.000

14.7099.00.000

Tissue dispenser



Tissue dispenser



- Description
- Wall mounted, 285x140x123mm
- Free standing model, 285x140x123mm

- Item number
- 14.7091.02.000
- 14.7091.02.100



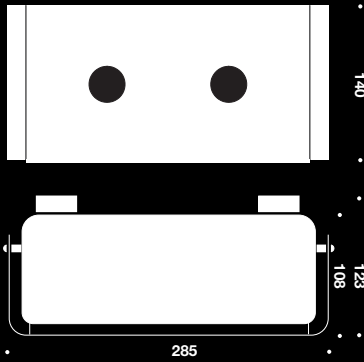
- Tissues f/dispenser, 33 boxes of 100 psc

- 14.7091.00.000

Sanitary bag dispenser



Sanitary bag dispenser



Description

285x140x123mm

Bags f/dispenser, 25 boxes of 50 psc

Item number

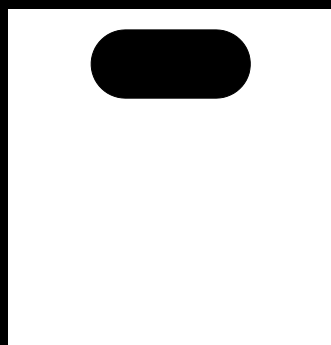
14.7095.02.000

14.7095.00.000

Waste bins slim



Waste bins slim



Description

W/oblong hole, 285x300x123mm, 15l

W/round hole, 285x300x123mm, 15l

Maxi, w/oblong hole, 285x600x123mm, 30l

Maxi, w/round hole, 285x600x123mm, 30l

Bags f/waste paper bin (small), 15l, 1.500 bags

Bags f/waste paper bin (small), 30l, 1.500 bags

Item number

14.7097.02.000

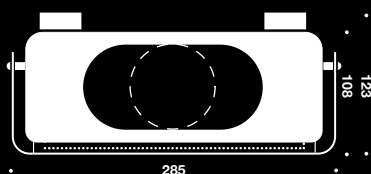
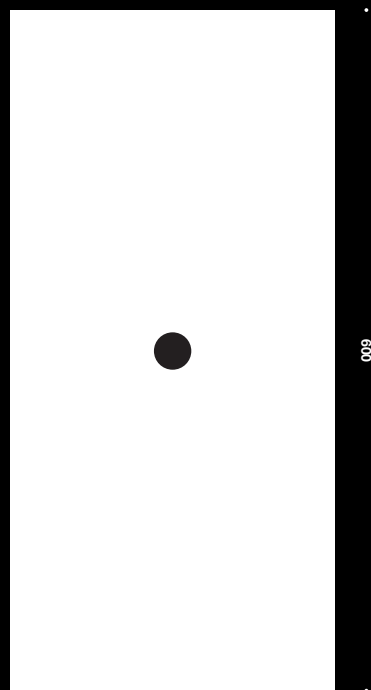
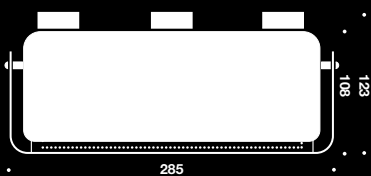
14.7097.02.100

14.7097.02.200

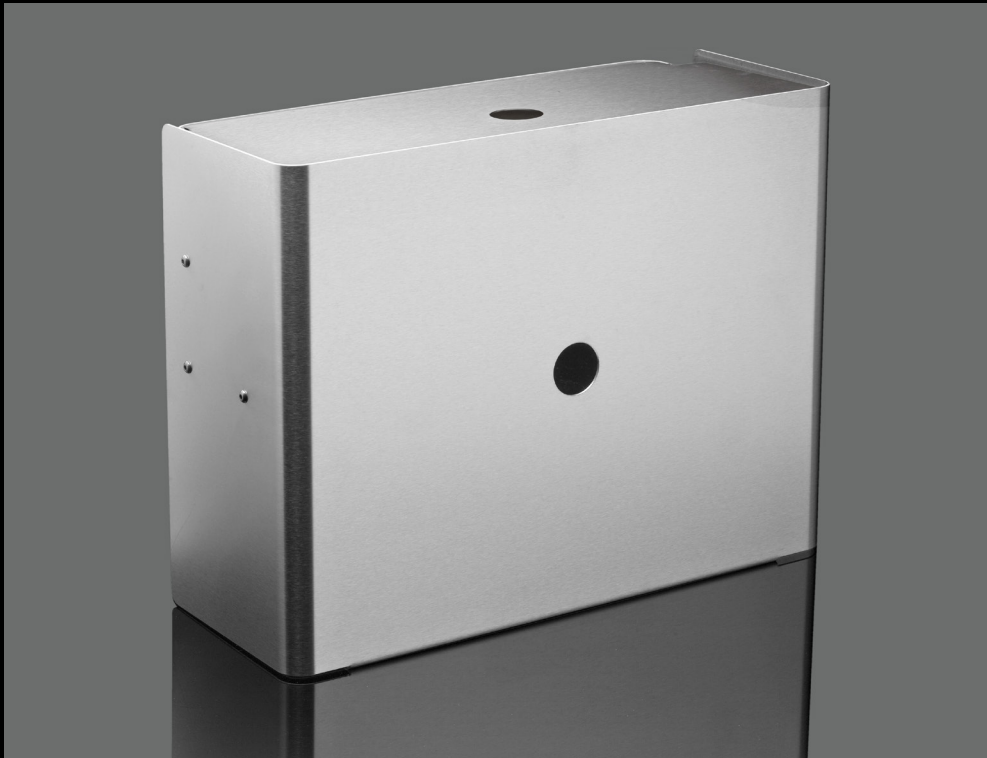
14.7097.02.201

14.7097.00.000

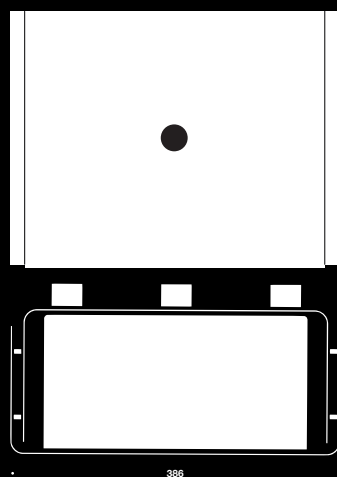
14.7085.00.000



Waste bins large



Waste bins large



Description

- W/o lid, 386x300x203mm, 20l
- W/lid, 386x300x203mm, 20l
- W/lid w/oblong hole, 386x300x203mm, 20l
- W/lid w/round hole, 386x300x203 mm, 20l

Item number

- 14.7085.02.201
- 14.7085.02.202
- 14.7085.02.208
- 14.7085.02.209

- Maxi, w/o lid, 386x600x187mm, 40l
- Maxi, w/small round grab hole, 386x600x203mm, 40l
- Maxi, w/lid w/oblong hole, 386x600x203mm, 40l
- Maxi, w/lid w/round hole, 386x600x203mm, 40l

- 14.7085.02.301
- 14.7085.02.302
- 14.7085.02.308
- 14.7085.02.309

Lid f/waste paper bin

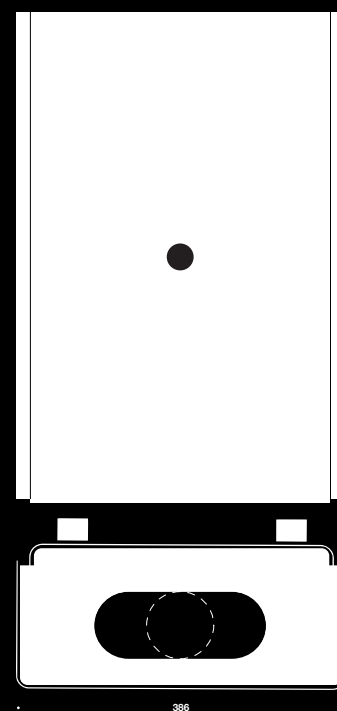
14.7085.02.203

Lid f/waste paper bin w/oblong hole

14.7085.02.206

Lid f/waste paper bin w/round hole

14.7085.02.207



Bags f/waste bin, clear, 40l, 25 rl. of 24 bags (600 pcs.)

14.7097.00.001

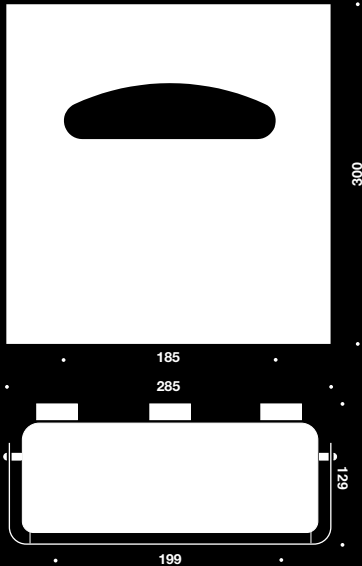
Bags f/waste bin, clear, 45l, 20 rl. of 25 bags (500 pcs.)

14.7097.00.002

Toilet seat cover dispenser



Toilet seat cover dispenser



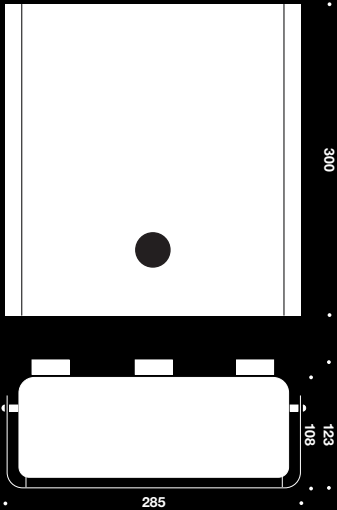
Description
300x285x129mm

Item number
14.7092.02.100

Hand dryer w/sensor



Hand dryer w/sensor

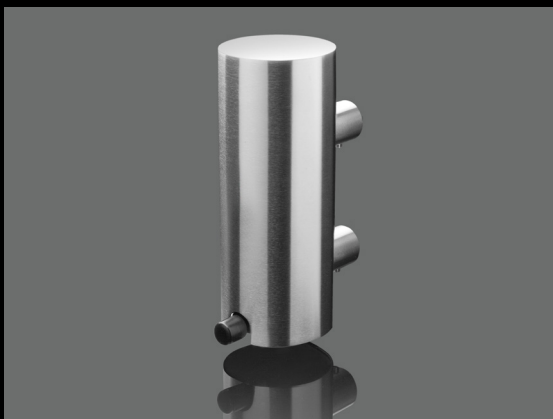


Description
285x300x123mm, 1600W

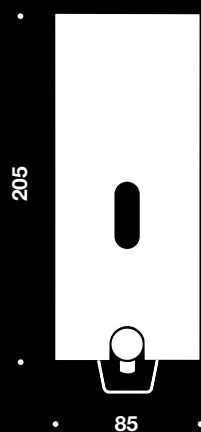
Item number
14.7082.02.000



Soap dispenser



Soap dispenser



Description

W/indicator, Ø85x205mm, 370ml
 W/o indicator, Ø85x205mm, 370ml

Item number

14.7045.02.006
 14.7045.02.007

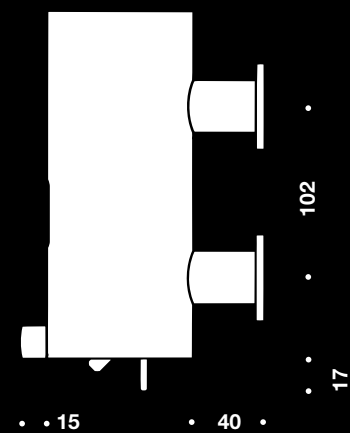
Soap, epicare, 500ml
 Soap, epicare, 5l
 Antibacterial soap, epicare, 500ml

14.7046.00.500
 14.7046.05.000
 14.7047.00.000

Soap, swan marked, W/perfume, 300ml
 Soap, swan marked, W/perfume, 5l
 Soap, swan marked, W/o perfume, 300ml
 Soap, swan marked, W/o perfume, 5l

14.7046.00.300
 14.7046.00.310
 14.7046.00.320
 14.7046.00.330

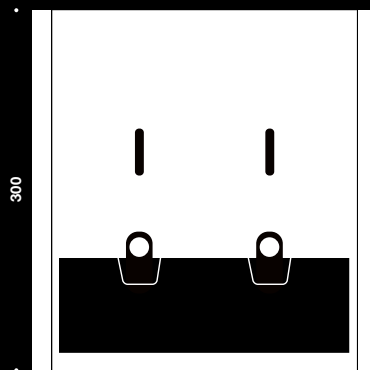
"Leave min. 210mm free space on top of soapdispenser, to allow refilling!"



Double soap dispenser



Double soap dispenser



Description

285x300x113mm w/indicator 2x370ml

Soap, epicare, 500ml

Soap, epicare, 5l

Antibacterial soap, epicare, 500ml

Soap, swan marked, w/perfume, 300ml

Soap, swan marked, w/perfume, 5l

Soap, swan marked, w/o perfume, 300ml

Soap, swan marked, w/o perfume, 5l

Item number

14.7045.02.200

14.7046.00.500

14.7046.05.000

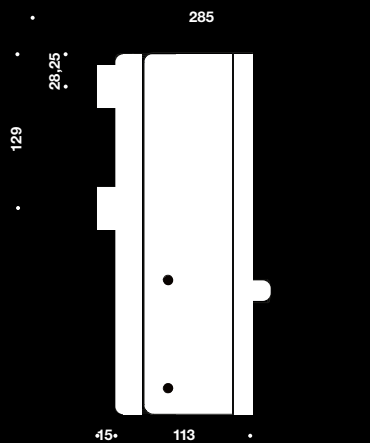
14.7047.00.000

14.7046.00.300

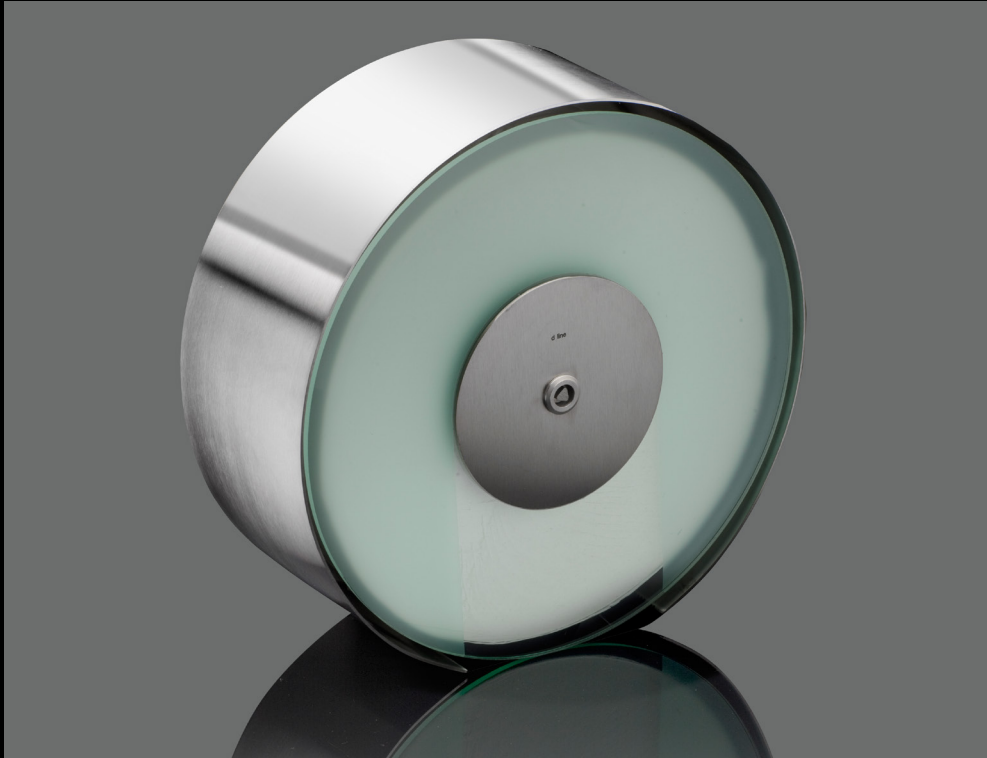
14.7046.00.310

14.7046.00.320

14.7046.00.330



Maxi toilet roll holder



Maxi toilet roll holder



212/308

Description

Stainless steel front, Ø212x123mm

Stainless steel front, Ø308x123mm

Frosted acrylic front, Ø212x123mm

Frosted acrylic front, Ø308x123mm

Toilet paper f/holder, Ø212mm, 1.600 sheets per roll, 12 rolls

Toilet paper f/holder, Ø308mm, 3.520 sheets per roll, 6 rolls

Back to back mounting bracket, Ø212mm

Back to back mounting bracket, Ø212mm

Item number

14.7086.02.001

14.7086.02.200

14.7087.02.002

14.7087.02.201

14.7086.00.000

14.7086.00.100

14.7087.02.300

14.7087.02.400



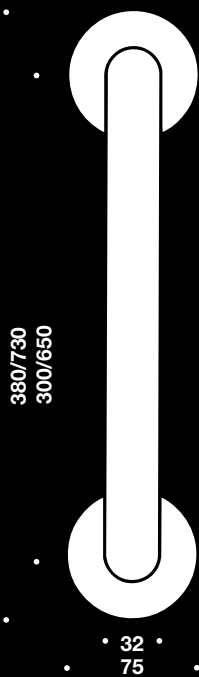
123

212/308

Grab rail Ø32mm



Grab rail Ø32mm



Description

300mm, w/Ø75mm snap on cover roses

650mm, w/Ø75mm snap on cover roses

300mm, w/bush, Ø20x22mm

650mm, w/bush, Ø20x22mm

Ø32x300mm w/bush

Ø32x650mm w/bush

Set of thrust roses, Ø75mm snap on cover roses

Item number

14.4617.02.309

14.4617.02.659

14.4617.02.308

14.4617.02.658

14.4614.02.306

14.4614.02.659

14.4963.03.321

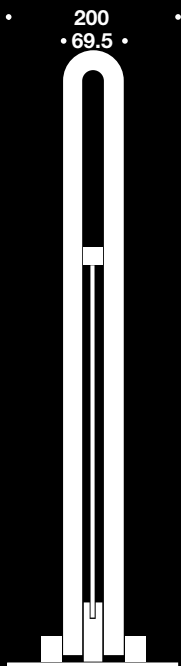


• 85 •

Hinged cantilever grab rail



Hinged cantilever grab rail



Description

Floor height 680mm BS Standard

Floor height 850mm DIN Standard

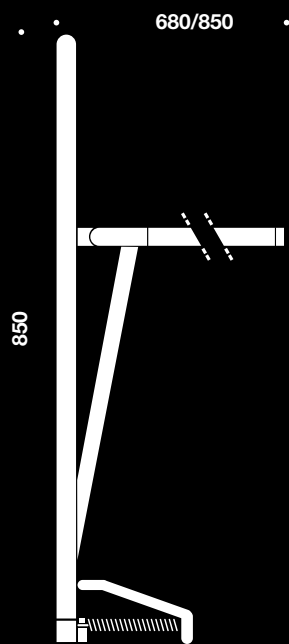
Padding profile for grab rail

Item number

14.7500.02.680

14.7500.02.850

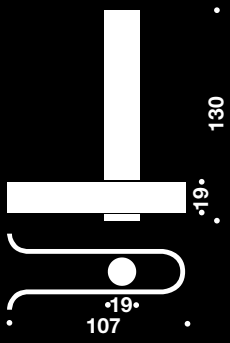
14.7503.02.850



Toilet roll holder



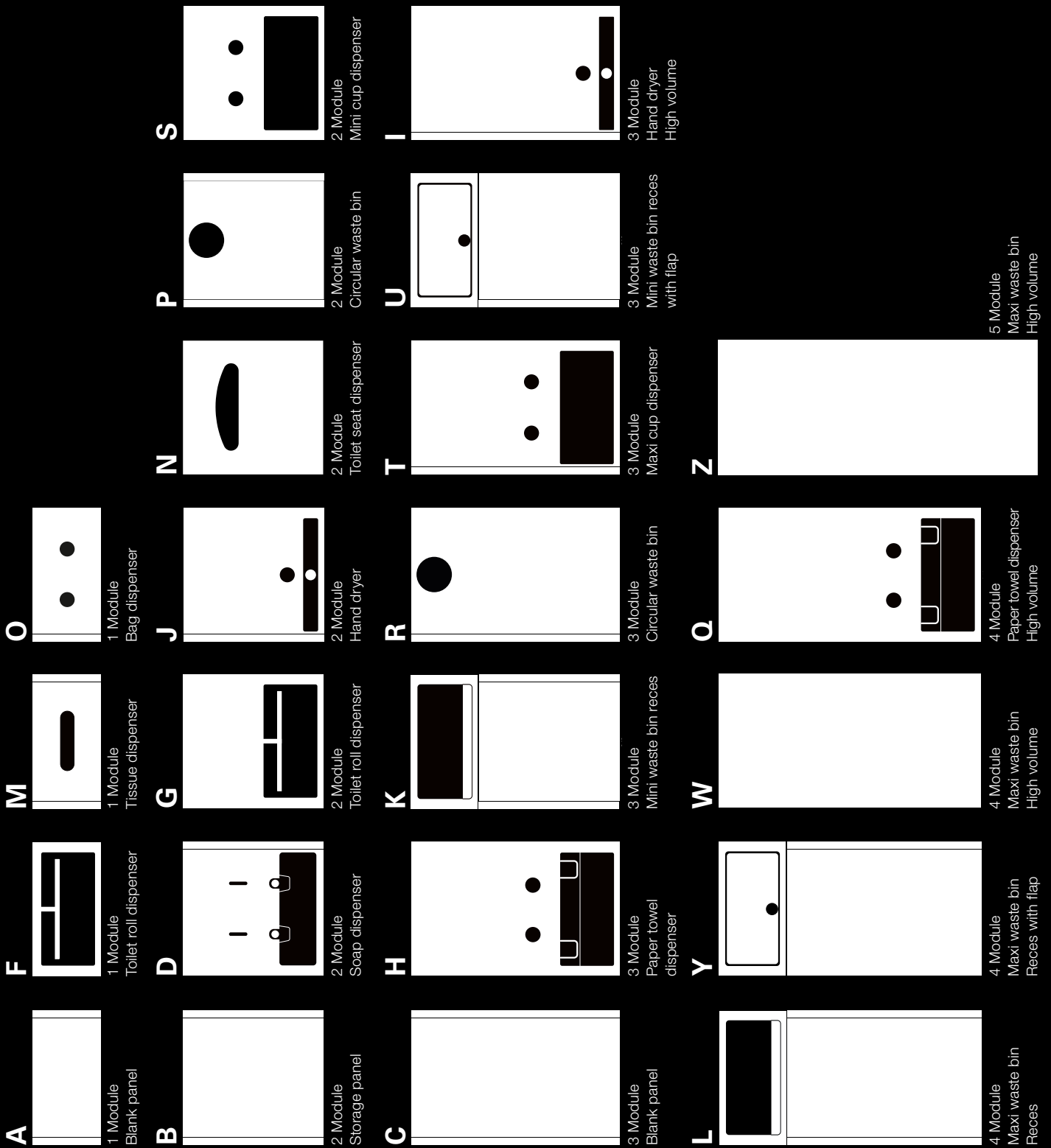
Toilet roll holder



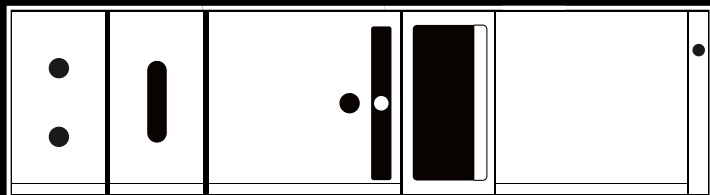
Description
F/hinged cantilever

Item number
14.7501.02.001

Washroom panels – Module overview



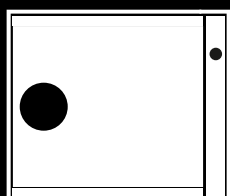
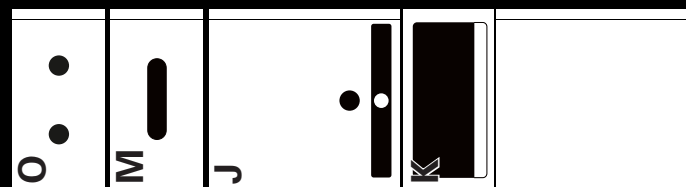
Washroom panels – assembly plan



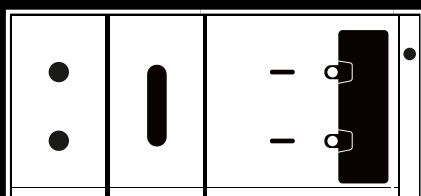
||



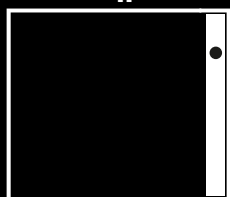
+



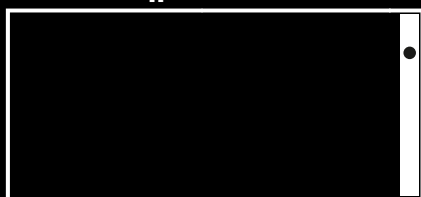
||



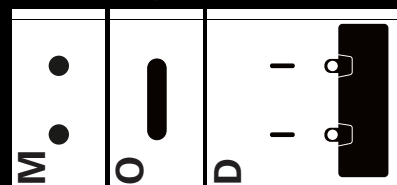
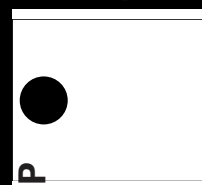
||



+



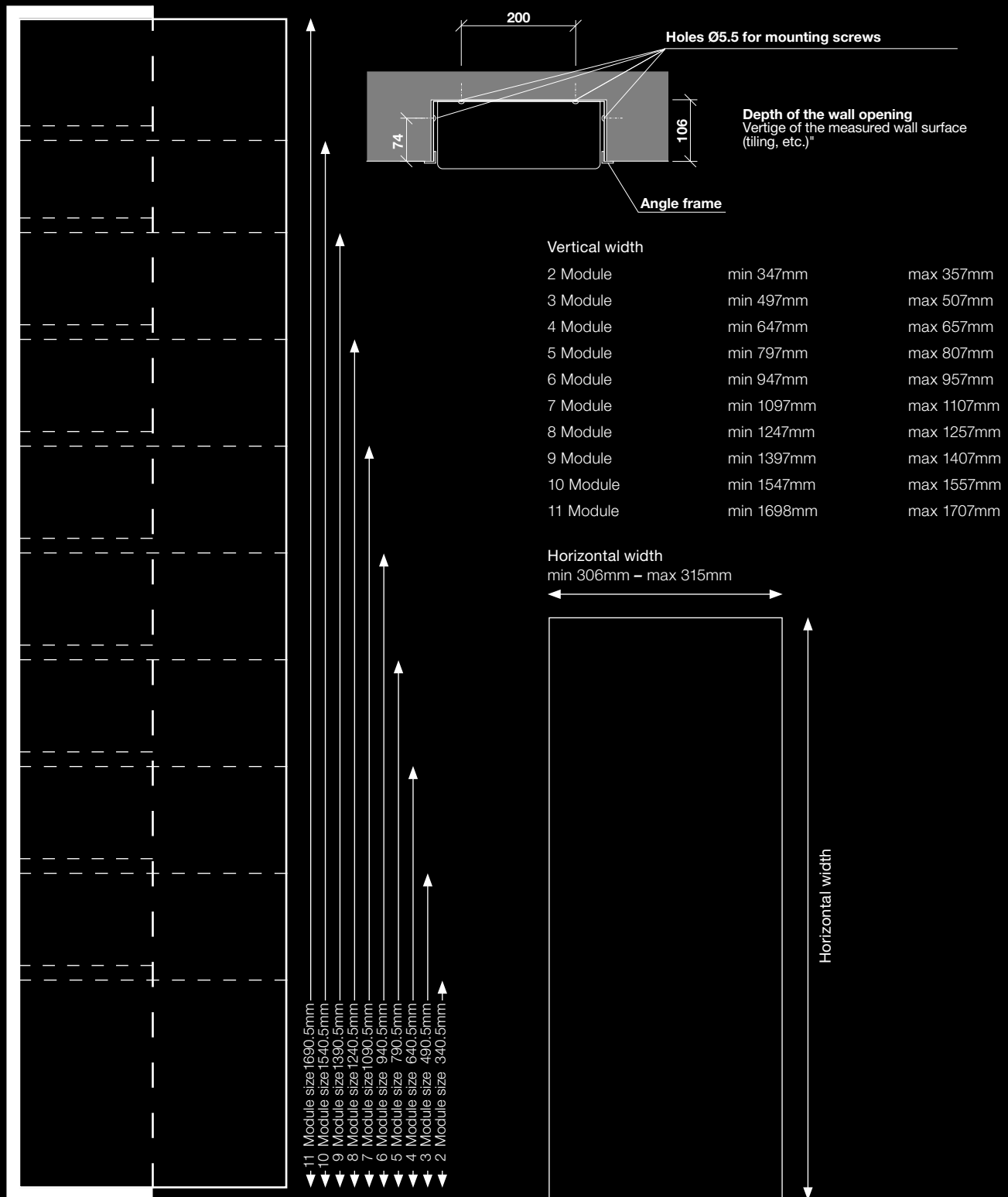
+



Assembly example

- 1 Choose Modules
- 2 Choose frame (flush or wall mounted)
- 3 Choose frame skit (if necessary)
- 4 Add lock
- 5 Contact d line sales for the item number on your sanitary panel combination

Washroom panels – measurements



Washroom panels

Combinations are based on general specifications.
However, all combinations are possible.

| | Volume | Complete panel size | | | | | | | | | | |
|---|--------|---------------------|---|----|-----|------|------|-------|-------|-------|------|--|
| | | 2 | 3 | 4 | 5 | 6 | 7 | 8 | 9 | 10 | 11 | |
| Hand drying | | | | | | | | | | | | |
| Paper towel (only) | | | H | Q | | | | | | | | |
| Hand dryer (only) | | J | | | | | | | | | | |
| Hand dryer / Waste bin | Medium | | | JP | JU | | | | | | | |
| Paper Towel / Waste bin | Low | | | | | HU | | | | | | |
| | Medium | | | | | | HY | | | | | |
| | High | | | | | | | HZ | QZ | | | |
| Paper towel / Hand dryer / Waste bin | Low | | | | | | | HJU | | | | |
| | Medium | | | | | | | | HJY | | | |
| | High | | | | | | | | | QJY | QJZ | |
| Hand cleaning | | | | | | | | | | | | |
| Soap dispenser (only) | | D | | | | | | | | | | |
| Soap dispenser / Hand dryer | | | | DJ | | | | | | | | |
| Paper towel / Soap dispenser / Waste bin | Low | | | | | | | HDU | | | | |
| | Medium | | | | | | | | HDY | | | |
| | High | | | | | | | | | QDY | QDZ | |
| Paper towel / Soap dispenser / Hand dryer / Waste bin | Medium | | | | | | | | | HDJU | | |
| | High | | | | | | | | | | HDJY | |
| Toilet (Men) | | | | | | | | | | | | |
| Toilet roll / Waste bin | Low | | | FU | | | | | | | | |
| | Medium | | | | FY | | | | | | | |
| | High | | | | | FZ | | | | | | |
| Seat cover / Toilet roll / Waste bin | Low | | | | | | NFU | | | | | |
| | Medium | | | | | | | NFY | | | | |
| | High | | | | | | | | NFZ | | | |
| Tissue / Toilet roll / Waste bin | Low | | | | MFU | | | | | | | |
| | Medium | | | | | MFY | | | | | | |
| | High | | | | | | MFZ | | | | | |
| Seat cover / Tissue / Toilet roll / Waste bin | Low | | | | | | NMFU | | | | | |
| | Medium | | | | | | | NMFY | | | | |
| | High | | | | | | | | NMFZ | | | |
| Toilet (Women) | | | | | | | | | | | | |
| Sanitary bags / Toilet roll / Waste bin | Low | | | | OFU | | | | | | | |
| | Medium | | | | | OFY | | | | | | |
| | High | | | | | | OFZ | | | | | |
| Seat cover / Sanitary bags / Toilet roll / Waste bin | Low | | | | | | | NOFU | | | | |
| | Medium | | | | | | | | NOFY | | | |
| | High | | | | | | | | | NOFZ | | |
| Sanitary bags / Tissue / Toilet roll / Waste bin | Low | | | | | OMFU | | | | | | |
| | Medium | | | | | | OMFY | | | | | |
| | High | | | | | | | OMFZ | | | | |
| Seat Cover / canitary bags / Tissue / Toilet roll / Waste bin | Low | | | | | | | NOMFU | | | | |
| | Medium | | | | | | | | NOMFY | | | |
| | High | | | | | | | | | NOMFZ | | |
| Kitchenette | | | | | | | | | | | | |
| Plastic cups / Waste bin | Low | | | SP | | | | | | | | |
| | Medium | | | | SR | | | | | | | |
| | High | | | | | TR | | | | | | |
| Paper towel / Plastic cups / Waste bin | Low | | | | | | HSP | | | | | |
| | Medium | | | | | | | HSR | | | | |
| | High | | | | | | | | HTR | | | |
| Plastic cups / Tissue / Waste bin | Low | | | | SMP | | | | | | | |
| | Medium | | | | | SMR | | | | | | |
| | High | | | | | | TMR | | | | | |
| Paper towel / Plastic cups / Tissue / Waste bin | Low | | | | | | | HSMP | | | | |
| | Medium | | | | | | | | HSMR | | | |
| | High | | | | | | | | | HTMR | | |

Storage panel



Storage panel



285

Description
Blank panel
Blank panel
Blank panel

| Module size | Module type | Item number |
|-------------|-------------|----------------|
| 1 | A | 14.7104.02.010 |
| 2 | B | 14.7104.02.020 |
| 3 | C | 14.7104.02.030 |



285

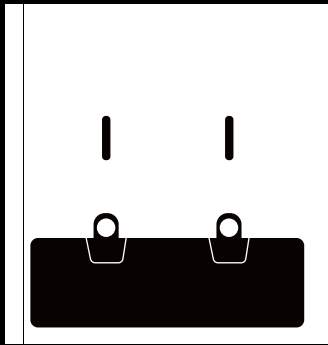


285

Soap dispenser



Soap dispenser



295

285

Description

Double 2x370ml

Soap, epicare, 500ml

Soap, epicare, 5l

Antibacterial soap, epicare, 500ml

Soap, swan marked, w/perfume, 300ml

Soap, swan marked, w/perfume, 5l

Soap, swan marked, w/o perfume, 300ml

Soap, swan marked, w/o perfume, 5l

Module size

2

Module type

D

Item number

14.7145.02.000

14.7046.00.500

14.7046.05.000

14.7047.00.000

14.7046.00.300

14.7046.00.310

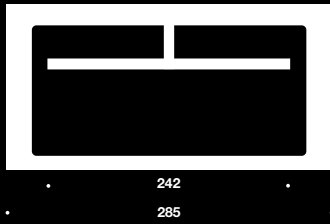
14.7046.00.320

14.7046.00.330

Toilet roll holder

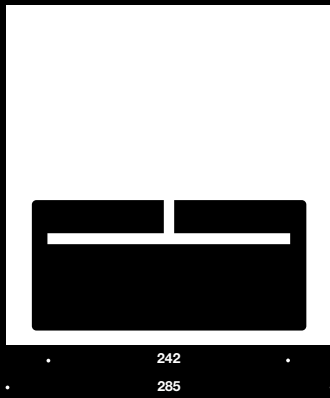


Toilet roll holder



Description
F/2 rolls

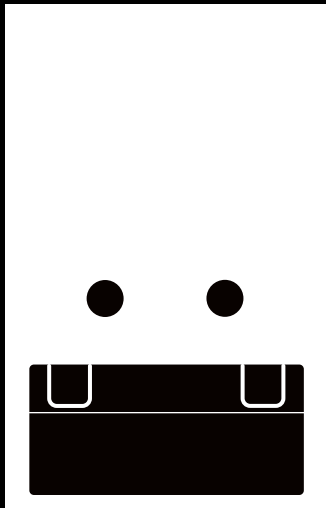
| Module size | Module type | Item number |
|-------------|-------------|----------------|
| 1 | F | 14.7156.02.000 |
| 2 | G | 14.7156.02.200 |



Paper towel dispenser



Paper towel dispenser



Description

Medium volume 2 bundles

High volume 4 bundles

Paper towels f/dispenser, 21 bundles of 145 psc

Module size

3

4

Module type

H

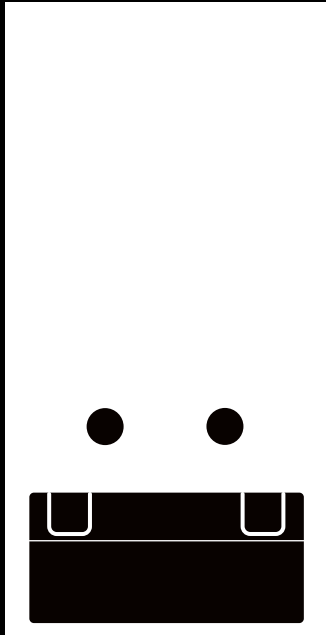
Q

Item number

14.7180.02.000

14.7180.02.100

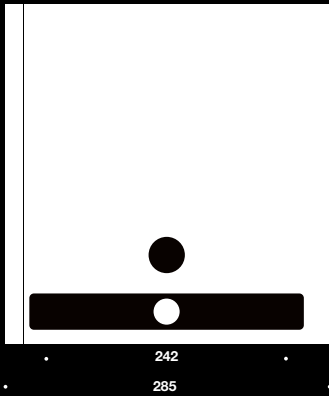
14.7080.00.000



Hand dryer



Hand dryer



Description

W/sensor, medium volume 1600W

W/sensor, high volume 2350W

Module size

2

3

Module type

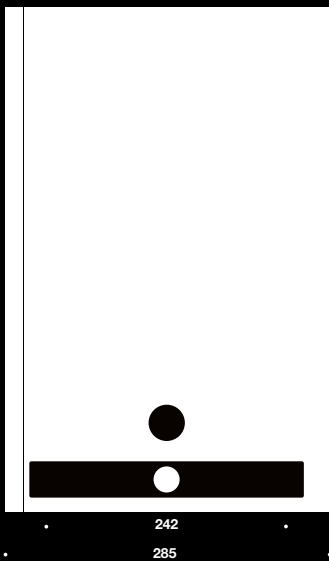
J

I

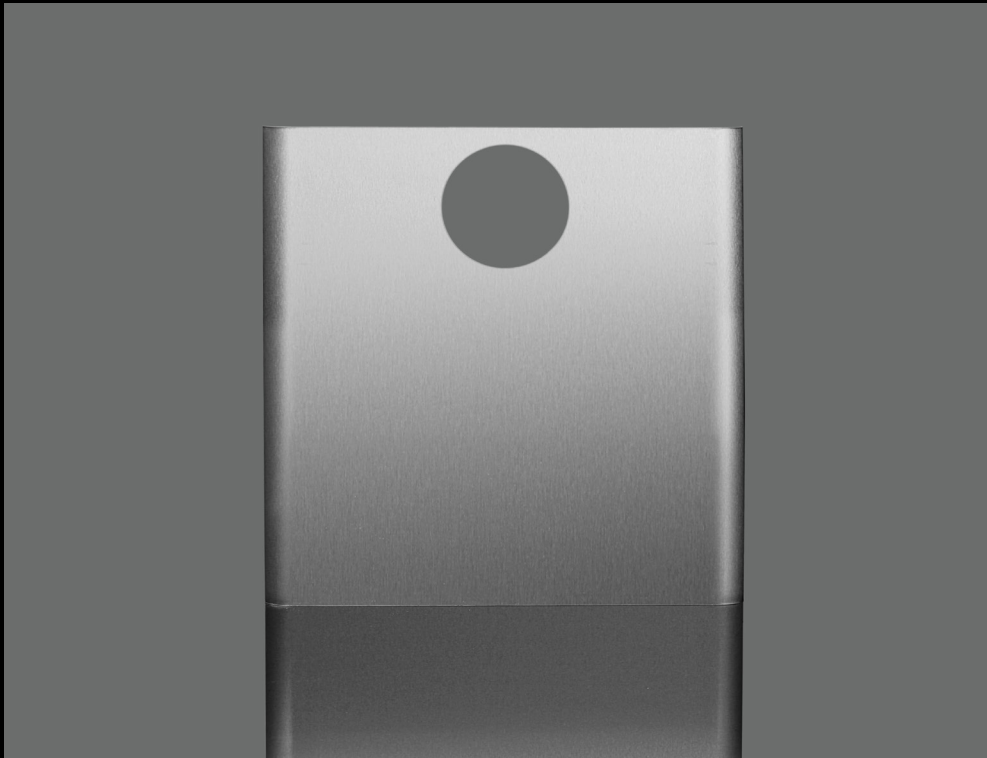
Item number

14.7182.02.000

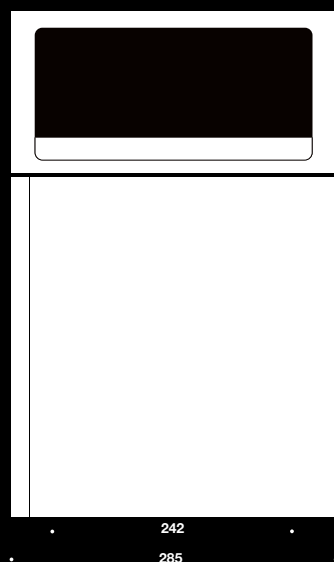
14.7182.02.100



Waste paper bin



Waste paper bin



115
242
285

Description
W/o flap 15l
W/o flap 20l

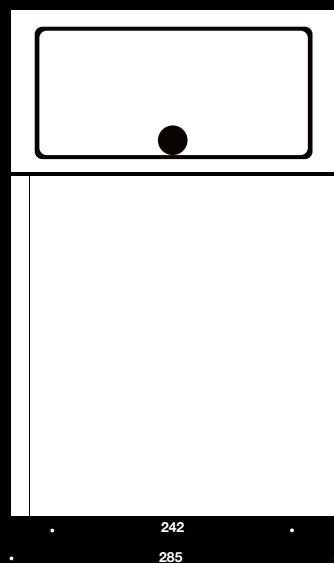
W/flap 15l
W/flap 20l

W/round hole 15l
W/round hole 20l

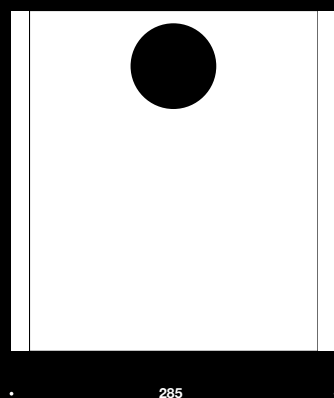
High volume 40l
High volume 50l

Bags f/waste paper bin (small), 15l, 1.500 bags
Bags f/waste paper bin, 40l, 1.000 bags
Bags f/waste paper bin, 50l, 1.000 bags

| Module size | Module type | Item number |
|-------------|-------------|----------------|
| 2 | K | 14.7185.02.100 |
| 3 | L | 14.7185.02.200 |
| 2 | U | 14.7188.02.100 |
| 3 | Y | 14.7188.02.200 |
| 2 | P | 14.7197.02.100 |
| 3 | R | 14.7197.02.200 |
| 4 | W | 14.7186.02.100 |
| 5 | Z | 14.7186.02.200 |
| 2 | | 14.7097.00.000 |
| 3 and 4 | | 14.7085.00.000 |
| 5 | | 14.7186.00.000 |



115
242
285

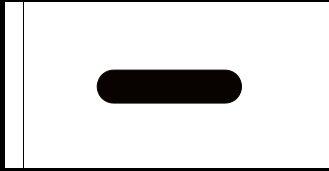


285

Tissue dispenser



Tissue dispenser



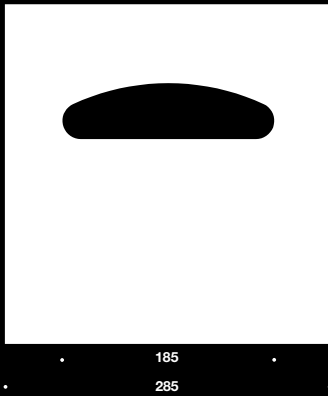
285

| Description | Module size | Module type | Item number |
|---|-------------|-------------|----------------|
| Tissue dispenser | 1 | M | 14.7191.02.000 |
| Tissues f/tissue dispenser, 33 boxes of 100 psc | | | 14.7091.00.000 |

Toilet seat cover dispenser



Toilet seat cover dispenser



Description

Toilet seat cover dispenser

Toilet seat covers f/dispenser, 25 boxes of 200 psc

Module size

2

Module type

N

Item number

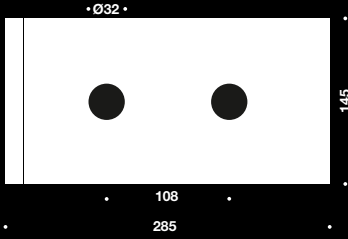
14.7192.02.100

14.7092.00.100

Sanitary bag dispenser



Sanitary bag dispenser



Description

Sanitary bag dispenser

Bags f/dispenser, 25 boxes of 50 pcs

Module size

1

Module type

O

Item number

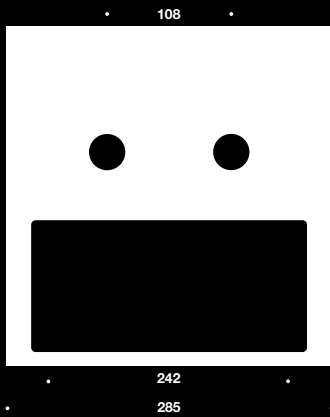
14.7195.02.100

14.7095.00.000

Plastic cup dispenser

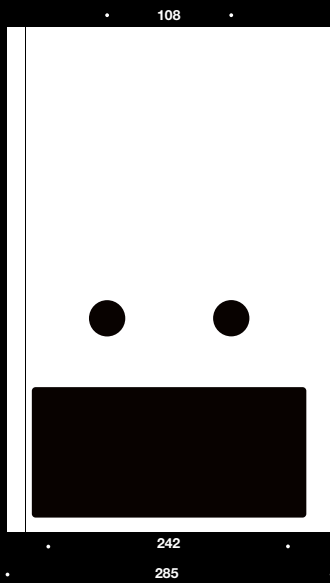


Plastic cup dispenser



Description
 Medium volume 100 cups of 21cl
 High volume 160 cups of 21cl
 Plastic cups f/dispenser, 21cl, 30 tubes of 100 pcs

| Module size | Module type | Item number |
|-------------|-------------|----------------|
| 2 | S | 14.7199.02.100 |
| 3 | T | 14.7199.02.200 |
| | | 14.7099.00.000 |



Miscellaneous



Miscellaneuos



Description

Locking mechanism

Module size

0

Module type

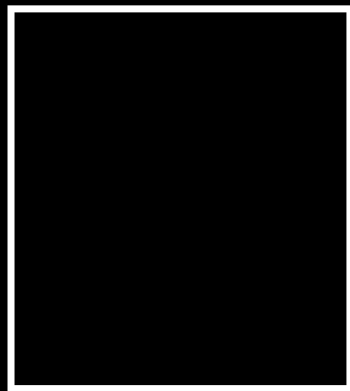
Item number

14.7103.02.010

Spare key

0

14.7100.00.000



Built-in frame

2

14.7101.02.020

Built-in frame

3

14.7101.02.030

Built-in frame

4

14.7101.02.040

Built-in frame

5

14.7101.02.050

Built-in frame

6

14.7101.02.060

Built-in frame

7

14.7101.02.070

Built-in frame

8

14.7101.02.080

Built-in frame

9

14.7101.02.090

Built-in frame

10

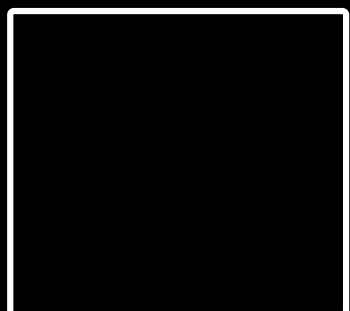
14.7101.02.100

Built-in frame

11

14.7101.02.110

305



Frame skirt

2

14.7102.02.020

Frame skirt

3

14.7102.02.030

Frame skirt

4

14.7102.02.040

Frame skirt

5

14.7102.02.050

Frame skirt

6

14.7102.02.060

Frame skirt

7

14.7102.02.070

Frame skirt

8

14.7102.02.080

Frame skirt

9

14.7102.02.090

Frame skirt

10

14.7102.02.100

Frame skirt

11

14.7102.02.110

377