



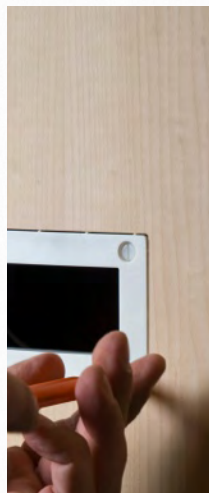
Install Guide



1

Single & Double Gang Enclosures

Drywall, Stone, &
Wood Applications

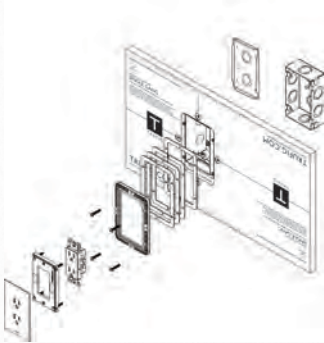


TRUFIG can be installed in a variety of finishes and surfaces. This guide will detail the install of single and double gang electrical enclosures in drywall, stone, and wood applications. Because all three use similar install procedures, most of the process will remain the same for all three applications.

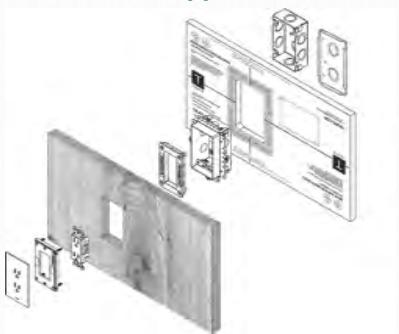
What's in a TRUFIG mounting system?

Each TRUFIG mounting system for single & double gang electrical enclosures contains three major components: (1) mounting platform, (2) trim component, and (3) fascia. The below illustrations detail every component that make up the TRUFIG mounting system in each of the three major applications. **For more detail on each application, use the link above the image.**

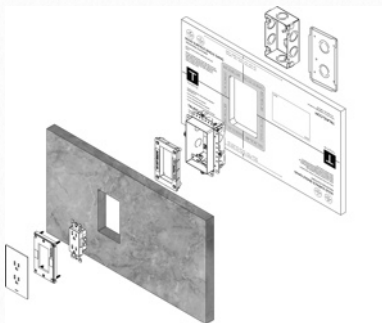
Drywall Application



Wood Application



Stone Application



The next four steps of the install process are the same for installing drywall, wood, stone, or any other solid surface.

(1) Handling & Preparing the Platform for Install

Storing the mounting platform

It's recommended that all materials are kept in their original packaging until just before installation. Store them off the ground in a secure, dry area until they are needed. Keep all materials dry and above freezing. At the time of installation and finishing, all materials must be at a temperature of 55°F (12.8°C) or above.

Cutting the panel bracket

Mounting platforms are designed so that the opening can be positioned anywhere within a standard 16" O.C. stud-bay. However, many installations will require the panel bracket to be cut to size. The panel is made of 100% pressed gypsum board - it can be cut using the score and snap method outlined below, or using a circular saw with a fine tooth blade (or table saw).



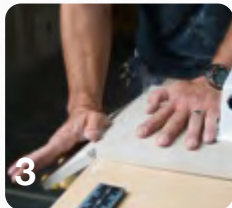
Step 1- Score

Score the front side of the panel bracket 3-4 times with a utility knife and straight edge.



Step 2- Flip & Align

Flip the panel bracket over and align the scored edge with the edge of a hard worktable.



Step 3- Snap

Strike the overhang to snap and remove the excess gypsum.

(2) Mounting the Mounting Platform



Step 1- Level

Using 1-5/8" screws, attach one side at the center line to one stud. Then place a spirit level on the top edge of the panel and fasten one screw in the other side.



Step 2- Fasten

Fasten the rest of the panel using at least three screws in each stud. Notice: if you are installing a drywall application platform, leave the sanding shield and paint shield in place - wrapped to the panel.

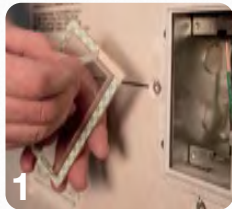


Step 3- Support

Place at least one of the provided patch clips on each of the sides with unsupported drywall. Attach the patch clips to the panel bracket using at least one 1-1/4" drywall screw.

This section will detail the next portion of the install process for drywall applications only including installing the sanding shield, mudding the panel, sanding the panel, and painting the walls.

(1) Installing the Sanding Shield and Preparing for Mud



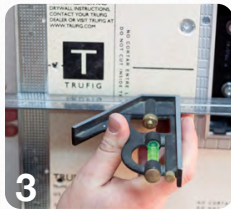
Step 1- Cut & Peel

Cut the clear wrap that's holding the paint & sanding shield to the panel bracket. Next, peel the backing around the perimeter of the sanding shield to prepare it for install.



Step 2- Clean & Press

Ensure that the mud dam surface is completely clear of any debris and then press the sanding shield into the opening ensuring that the entire perimeter is adhered firmly to the mud dam shelf.



Step 3- Check

Prior to proceeding to applying mud to the panel ensure that: 1) the platform is level, 2) the depth of the mud dam is equal to any surrounding corner bead, and 3) the panel bracket is not recessed in relationship to any surrounding drywall.

(2) Mudding the Panel

Below are the steps required in order to achieve a level 5 smooth wall finish on a TRUFIG mounting platform. If a wall with TRUFIG is specified with less than a level 5 finish, it is highly recommended that the specification for that wall be changed to level 5. For more information about the different levels of drywall finishes visit the USG website (<http://www.usg.com/documents/construction-handbook/chapter5.pdf>)



Step 1- Fill

Using quick-set compound, fill all gaps and let fully cure.



Step 2- Tape

Using mesh tape, apply tape around all adjoining surfaces. This includes areas around the panel bracket and up to the mud dam as shown in the photo above.

The next section will detail the next portion of the install process for Solid Surface Applications only, including preparing the drywall, preparing the enclosure for mounting, cutting the opening, attaching the enclosure, and mounting the finished panel on the wall.

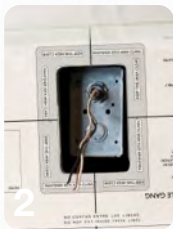
(1) Preparing the drywall



Mud & Tape

Many local codes specify that all drywall joints must be sealed and taped even if they are going to be covered with wood or stone. For this reason, we recommend that the area around the perimeter of the TRUFIG solid surface mounting platform be filled with quick-setting mud and then have tape pressed into the seams. NOTE: it's not necessary to apply the mud around the box enclosure area on a solid surface platform.

(2) Preparing the enclosure



Remove

In order to complete a solid surface install the enclosure will need to be removed from the wall. Removing the enclosure from the panel bracket requires that the four screws inside the enclosure that hold the back box in place (shallow, or deep) be removed. Next, remove the four screws that hold the enclosure to the panel bracket. The enclosure should now be loose - removed from the wall - and the back box left in the wall opening as shown to the left.

(3) Cutting the Fascia Opening

Depending on what type of material the TRUFIG enclosure is being mounted into, there are a variety of different methods that can be used to cut the fascia opening. For harder, dense materials, such as stone or glass, the use of a water jet machine is required. For softer materials, such as wood, a CNC table or a router template accessory (sold by TRUFIG) can be used. Whatever method is used to cut the opening, it is important to note that the opening needs to be cut **very precise**. Unlike surface mount faceplates, TRUFIG fascias do NOT cover the opening that is cut into the material - they install flush to the material surface, therefore leaving zero tolerance for uneven, or unclean cuts in the opening.

(this section is continued on the next page)

The final section of the install process will apply to **all single and double gang enclosure** installs. This section includes installing the device and trim components, and leveling the device and fascia.

(1) Installing the Device & Trim Components



Step 1 - Attach

The TRUFIG enclosure should now be installed in the wall and the wiring in place - photo 1. If there is a plastic fixture inside the opening, remove and discard it. Next, attach the device to sub plate using the provided flat head screws - photo 2. To ensure proper fit, make sure that the device being installed is on the approved device list in the addendum section of this guide. If provided, use the metal device shims between frontside of the device and the backside of the sub plate. These shims are provided only in some trim component kits in order to ensure the device installs flush in relationship to the fascia.



Step 2 - Wire & Fasten

Now that the device is attached to the sub plate, proceed to wire the device as normal - photo 3. Next, screw the sub plate into the enclosure using the four screws on the corners - photo 4.



(2) Installing the Fascia



Step 1 - Level

Leveling the fascia can be done using a fascia and a removal tool by making adjustments to the four adjustment screws on the trim components then attaching the fascia to check for level finish. However, the process will be much easier if a Fascia Depth Adjustment tool accessory is used. This tool will allow you to make adjustments to the trim components and see the results of those adjustments without having to attach and reattach the fascia - photo 1.



Step 2 - Click

Once the trim components are level, clicking the fascia into place is as easy as placing the bottom side in first and gently releasing the top into place.

Addendum

This section contains additional information and advice to help the TRUFIG install process be successful.

Trim Component Selection & Approved Devices

Description	Model#	Approved Devices
Single Gang, Receptacle	50314	Leviton® 5325, Leviton® T5325
Single Gang, Lutron® SeeTouch® Keypad	50315	Any SeeTouch® NI Keypad, or SeeTouch® Homeworks NI Keypad, QS or non-QS
Single Gang, Data Jack	50317	Leviton® 41643 or 41646 Quickport Frame
Single Gang, Decora®	50318	Any Decora® device
Single Gang, Lutron® Maestro Dimmer	50319	Any Lutron® Maestro dimmer
Single Gang, Lutron® Dimmed Receptacle	50320	Lutron® 15A or 20A NRT or SCR model
Single Gang, Crestron® Cameo Keypad	50321	Any Crestron® C2N-CBD-P Keypad
Single Gang, Switch	50331	Leviton® 5602

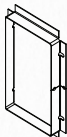
Description	Model#	Approved Devices
Double Gang, Lutron® SeeTouch® Keypad	50316	Any SeeTouch® NI Keypad, or SeeTouch® Homeworks NI Keypad, QS or non-QS
Double Gang, Decora®	50322	Any Decora® device
Double Gang, Switch	50332	Leviton® 5602

TRUFIG Accessories for Single & Double Gang Enclosures



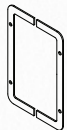
Fascia Removal Tool

This is the only approved tool for removing TRUFIG Fascias. Sold in packs of 25 tools (p/n: 50014)



Tile Dam

Attaches to a TRUFIG drywall mounting platform. Accommodates up to 1/2" thick (w/plaster shims). Need to use with plaster shim accessory in order to accommodate thick tiles. Sold in single packs for both single (p/n: 50077) and double (p/n: 50078) gang sizes.



Plaster Shims

Attaches to a TRUFIG drywall mounting platform in order to accommodate thicker plaster applications. Accommodates plaster thicknesses of up to 3/8" thick in 1/16" increments. Sold in 5 packs for both single (p/n: 50017) and double (p/n: 50018) gang sizes. NOTE: 1 package will accommodate 5 locations at the maximum depth of 3/8" per opening.



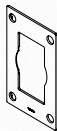
Paint & Sanding Shields

Extra paint and sanding shields are available for bulk purchase. They are sold in 10 packs for both single and double gang sizes. Sanding shield (1G p/n: 50039, 2G p/n: 50040) Painting shield (1G p/n: 50041, 2G p/n: 50042)



Deep Back Box

Replaces the shallow box on any TRUFIG 1G or 2G platform. Increases amount of knock-outs and increases total box volume. Highly recommended for all solid surface installs. Sold in single packs for both single (p/n: 50043) and double (p/n: 50044) gang sizes.



Fascia Depth Adjustment Tool

Allows for quick and easy adjustments to the trim components prior to fascia installation. Sold in single packs for both single (p/n: 50060) and double (p/n: 50061) gang sizes.

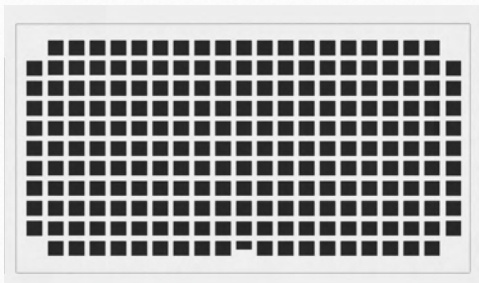
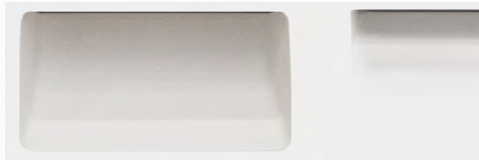
Router Template

A plexi-glass cutting aid that allows for in-field routing of a precise fascia opening for solid surface applications. Can only be used on soft materials such as wood. Sold in double packs for both single (p/n: 50035) and double (p/n: 50036) gang sizes.

2

HVAC Vents & Diffusers

Drywall, Stone, &
Wood Applications



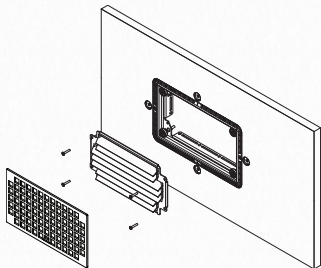
TRUFIG can be installed in a variety of finishes and surfaces. This guide will detail the install of HVAC vents and diffusers in drywall, stone, and wood applications. Because all three use similar install procedures, most of the process will remain the same for all three applications.

What's in a TRUFIG mounting system?

TRUFIG mounting systems for HVAC are available in two different types: 1) HVAC Vents, and 2) GRG Linear Diffusers. The HVAC Vents contain two major components: 1) mounting platform, and 2) grilles. The GRG Linear Diffusers only contain one component - the diffuser panel. **For more detail on each application, use the link above the image.**

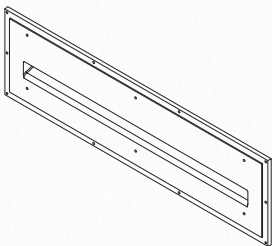
Drywall Application

HVAC Vent



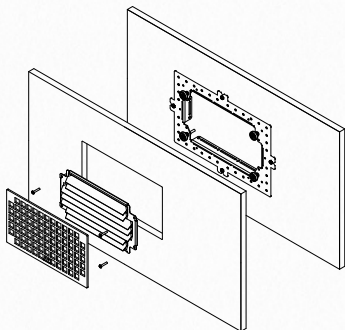
Drywall Application

GRG Linear Diffuser



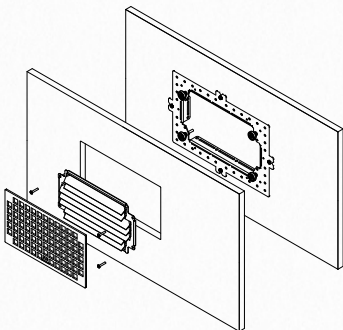
Wood Application

HVAC Vent



Stone Application

HVAC Vent



HVAC Vent Install Guide

The next four steps of the install process are the same for installing drywall, wood, stone, or any other solid surface. The GRG install process is different than HVAC vents - for GRG install see page 34.

(1) Handling & Preparing the Platform for Install

Storing the mounting platform

It's recommended that all materials are kept in their original packaging until just before installation. Store them off the ground in a secure, dry area until they are needed. Keep all materials dry and above freezing. At the time of installation and finishing, all materials must be at a temperature of 55°F (12.8°C) or above.

Cutting the panel bracket

The mounting platforms are designed so that the opening can be positioned anywhere within a standard 16" O.C. stud-bay. However, many installations will require the panel bracket to be cut to size. The panel is made of 100% pressed gypsum board - it can be cut using the score and snap method outlined below, or using a circular saw with a fine tooth blade (or table saw).



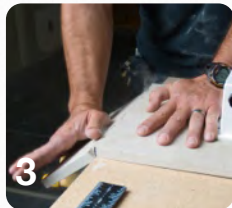
Step 1- Score

Score the front side of the panel bracket 3-4 times with a utility knife and straight edge.



Step 2- Flip & Align

Flip the panel bracket over and align the scored edge with the edge of a hard worktable.



Step 3- Snap

Strike the overhang to snap and remove the excess gypsum.

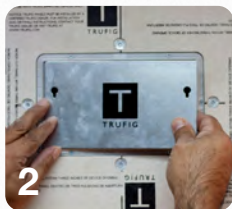
This section will detail the next portion of the install process for drywall applications only including installing the sanding shield, mudding the panel, sanding the panel, and painting the walls.

(3) Installing the Sanding Shield and Preparing for Mud



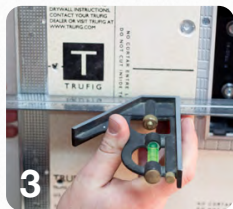
Step 1- Attach Lanyard

Be sure that air is not circulating through the system, that the sanding shield is in place, and that the safety lanyard is attached to the sanding shield.



Step 2- Snap

Ensure that the mud dam surface is completely clear of any debris and then press the sanding shield into the opening ensuring that the entire perimeter is slightly below the top of the mud dam - about .010" below. If needed, you can adjust the height of the sanding shield using the 4 adjustment screws in the corner of the back bracket.



Step 3- Check

Prior to proceeding to applying mud to the panel ensure that: 1) the platform is level, 2) the top of the mud dam is level to any surrounding corner bead, and 3) the panel bracket is not recessed in relationship to any surrounding drywall.

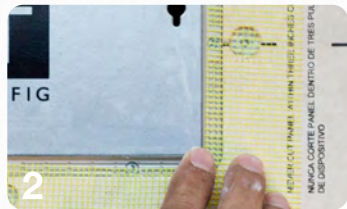
(4) Mudding the Panel

Below are the steps required in order to achieve a level 5 smooth wall finish on a TRUFIG mounting platform. If a wall with TRUFIG specified for less than a level 5 finish, it is highly recommended that the specification for that wall be changed to level 5. For more information about the different levels of drywall finishes visit the USG website (<http://www.usg.com/documents/construction-handbook/chapter5.pdf>)



Step 1- Fill

Using quick-set compound, fill all gaps and let fully cure.



Step 2- Tape

Using mesh tape, apply tape around all adjoining surfaces. This includes areas around the panel bracket and up to the mud dam as shown in the photo above.

The next section will detail the next portion of the install process for Solid Surface Applications only including preparing the drywall, preparing the enclosure for mounting, cutting the opening, attaching the enclosure, and mounting the finished panel on the wall.

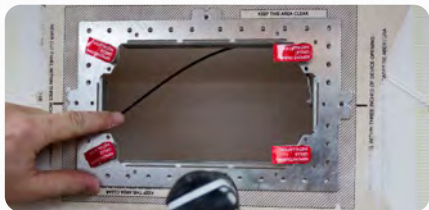
(1) Preparing the drywall



Step 1 - Mud & Tape

Many codes specify that all drywall joints must be sealed and taped even if they are going to be covered with wood or stone. For this reason, we recommend that the area around the perimeter of the TRUFIG solid surface mounting platform be filled with quick-setting mud and then have tape pressed into the seams. NOTE: it's not necessary to apply the mud around the box enclosure area on a solid surface platform.

(2) Preparing the back bracket



Step 1 - Remove

In order to complete a solid surface install the back bracket will need to be removed from the wall/ceiling. Remove the screws that hold the back bracket to the panel bracket - the back bracket should now be loose. If the duct work is already attached, remove the bracket from the wall/ceiling enough to access the screws holding the bracket to the duct work. Next, remove the screws holding the duct work to the back bracket and remove the bracket from the wall.

(3) Cutting the Grille Opening

Depending on what type of material the TRUFIG HVAC vent is being mounted into, there are a variety of different methods that can be used to cut the grille opening. For harder, dense materials, such as stone or glass, the use of a water jet machine is needed. For softer materials, such as wood, a CNC table or a router template accessory (sold by TRUFIG) can be used. Whatever method is used to cut the opening, it is important to note that the opening needs to be cut **very precise**. Unlike surface mount grilles, TRUFIG grilles do NOT cover the opening that is cut into the material - they install flush to the material surface, therefore leaving zero tolerance for uneven or unclean cuts in the opening.

(this section is continued on the next page)

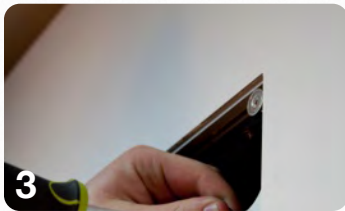
The final section of the install process will apply to **all sizes of HVAC vent** installs. This section includes leveling the grille and grille install.

(2) Installing the Grille



Step 1 - Level & Attach

Leveling the grille can be done using just a grill by making adjustments to the four adjustment screws on the back bracket then attaching the grille to check for level finish. However, the process will be much easier if a HVAC Grille and level tool accessory is used (p/n: 50072). This tool will allow you to make adjustments to the trim components and see the results of those adjustments without having to attach and reattach the grille - photo 1. Also, before attaching the grille, be sure to reattach the safety lanyard - photo 2.



Step 2 - Click

Once the adjustment screws are level, clicking the grille into place is as easy reattaching the safety lanyard and gently releasing the grille into place.

HVAC GRG Install Guide

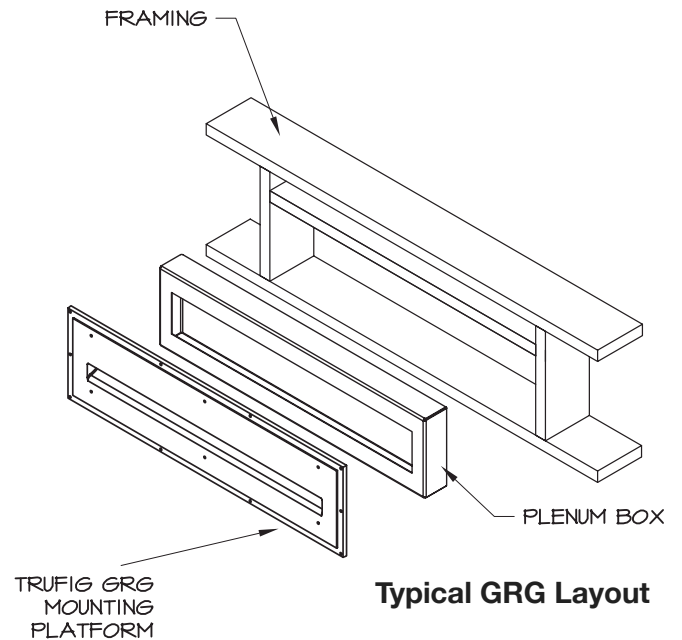
Below are the instructions for installing a TRUFIG GRG Diffuser in drywall level 5 finish.

(1) FRAMING AND PREPARATION

Rough Opening Framing

GRG diffusers are created for installation in both ceilings and walls. It is required that the contractor create a rough opening in which to install the diffuser. Use the below chart to find the appropriate rough opening dimensions for each diffuser.

Dim	7x4	24x1-5/8	36x1-5/8	48x1-5/8
length	14"	28-3/4"	40-3/4"	52-3/4"
width	14"	10-1/2"	10-1/2"	10-1/2"

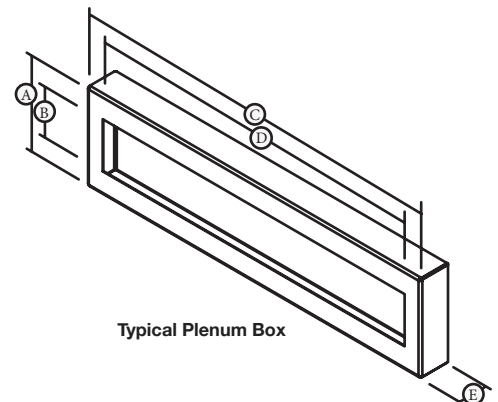


Plenum Box Construction and Attachment

GRG diffusers are created to work with a plenum box. Plenum boxes are the inlet and outlet boxes that serve as a transition between the TRUFIG GRG diffuser and the rest of the HVAC duct work. Below are the recommended dimensions for a plenum box to attach to the TRUFIG diffuser.

Recommended Plenum Box Dimensions

Dim	7x4	24x1-5/8	36x1-5/8	48x1-5/8
A	>11-1/2" [292mm]	10-1/2" [267mm]	10-1/2" [267mm]	10-1/2" [267mm]
B	9-1/4" [235mm]	5-1/2" [140mm]	5-1/2" [140mm]	5-1/2" [140mm]
C	14" [356mm]	28-3/4" [730mm]	40-3/4" [1035mm]	52-3/4" [1035mm]
D	12-3/4" [324mm]	24-7/8" [632mm]	36-7/8" [937mm]	48-7/8" [937mm]
E	>3-1/4" [89mm]	>3-1/2" [89mm]	>3-1/2" [89mm]	>3-1/2" [89mm]



3

Touch Panels

Drywall, Stone, &
Wood Applications



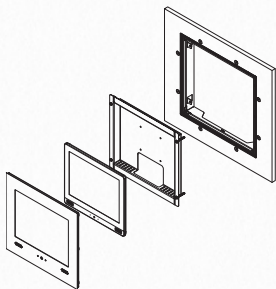
TRUFIG can be installed in a variety of finishes and surfaces. This guide will detail the install of TRUFIG Touch Panels in drywall, stone, and wood applications. Because all three use similar install procedures, most of the process will remain the same for all three applications.

What's in a TRUFIG mounting system?

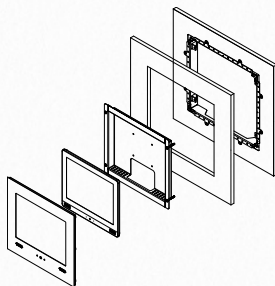
TRUFIG mounting systems for Touch Panels are available in many different configurations. Medium Size, Large Size, and X-Large Size are mounting systems designed to accommodate touch panel devices from a variety of manufacturers. TRUFIG also makes dedicated mounting systems for iPad and iTouch devices. No matter what touch panel your using, each system will have a mounting platform and fascia.

NOTE: touch panel devices come in many sizes with different features and outer dimensions, the mounting systems for each touch panel therefore can contain a wide array of components depending on the device. These difference will not be detailed in this section, but will be highlighted in the fascia install portion.

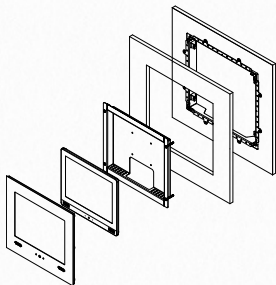
Drywall Application



Wood Application



Stone Application



The next four steps of the install process are the same for installing drywall, wood, stone, or any other solid surface.

(1) Handling & Preparing the Platform for Install

Storing the mounting platform

It's recommended that all materials are kept in their original packaging until just before installation. Store them off the ground in a secure, dry area until they are needed. Keep all materials dry and above freezing. At the time of installation and finishing, all materials must be at a temperature of 55°F (12.8°C) or above.

Cutting the panel bracket

The mounting platforms are designed so that the opening can be positioned anywhere within a standard 16" O.C. stud-bay - with the exception of the large and XL sizes. However, many installations will require the panel bracket to be cut to size. The panel is made of 100% pressed gypsum board - it can be cut using the score and snap method outlined below, or using a circular saw with a fine tooth blade (or table saw).



Step 1 - Score

Score the front side of the panel bracket 3-4 times with a utility knife and straight edge.



Step 2 - Flip & Align

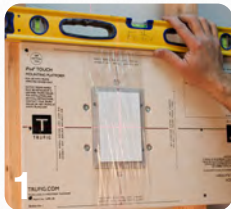
Flip the panel bracket over and align the scored edge with the edge of a hard worktable.



Step 3 - Snap

Strike the overhang to snap and remove the excess gypsum.

(2) Mounting the Mounting Platform



Step 1 - Align

Using 1-5/8" screws, attach one side at the center line to one stud. Next, make sure that the panel is properly aligned and fasten the remaining sides.



Step 2 - Fasten

Fasten the rest of the panel using at least three screws in each stud - depending on the size of the platform.



Step 3 - Support

Place at least one of the provided patch clips on each of the sides with unsupported drywall. Attach the patch clips to the panel bracket using at least one 1-1/4" drywall screw.

This section will detail the next portion of the install process for drywall applications only including installing the sanding shield, mudding the panel, sanding the panel, and painting the walls.

(1) Installing the Sanding Shield and Preparing for Mud



Step 1- Snap

Ensure that the mud dam surface is completely clear of any debris and then press the sanding shield into the opening ensuring that the entire perimeter is slightly below the top of the mud dam - about .010" below. If needed, you can adjust the height of the sanding shield using the 4 adjustment screws in the corner of the back bracket.



Step 2- Check

Prior to proceeding to applying mud to the panel ensure that: 1) the platform is level, 2) the top of the mud dam is level to any surrounding corner bead, and 3) the panel bracket is not recessed in relationship to any surrounding drywall.

(2) Mudding the Panel

Below are the steps required in order to achieve a level 5 smooth wall finish on a TRUFIG mounting platform. If a wall with TRUFIG specified for less than a level 5 finish, it is highly recommended that the specification for that wall be changed to level 5. For more information about the different levels of drywall finishes visit the USG website (<http://www.usg.com/documents/construction-handbook/chapter5.pdf>)



Step 1- Fill

Using quick-set compound, fill all gaps and let fully cure.



Step 2- Tape

Using mesh tape, apply tape around all adjoining surfaces. This includes areas around the panel bracket and up to the mud dam as shown in the photo above.

The next section will detail the next portion of the install process for Solid Surface Applications only including preparing the drywall, preparing the enclosure for mounting, cutting the opening, attaching the enclosure, and mounting the finished panel on the wall.

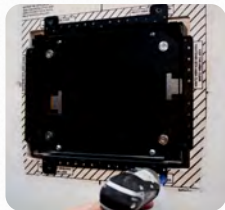
(1) Preparing the drywall



Step 1 - Mud & Tape

Many codes specify that all drywall joints must be sealed and taped even if they are going to be covered with wood or stone. For this reason, we recommend that the area around the perimeter of the TRUFIG solid surface mounting platform be filled with quick-setting mud and then have tape pressed into the seams. **NOTE: DO NOT** mud around the box enclosure area on a solid surface platform.

(2) Preparing the back bracket



Step 1 - Remove

In order to complete a solid surface install the back bracket will need to be removed from the wall/mounting platform. Remove the screws that hold the back bracket to the panel bracket. The back bracket should now be loose and ready to be fastened to the solid surface finish material.

(3) Cutting the Fascia Opening

Depending on what type of material the TRUFIG Touch Panel is being mounted into, there are a variety of different methods that can be used to cut the grille opening. For harder, dense materials, such as stone or glass, the use of a water jet machine is needed. For softer materials, such as wood, a CNC table or a router template accessory (sold by TRUFIG) can be used. Whatever method is used to cut the opening, it is important to note that the opening needs to be cut **very precise**. Unlike surface mount faceplates, TRUFIG facias do **NOT** cover the opening that is cut into the material - they install flush to the material surface, therefore leaving zero tolerance for uneven or unclear cuts in the opening.

(this section is continued on the next page)

iPad Fascia Install

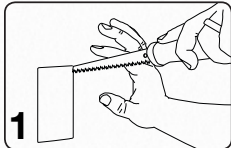
Fascia Assembly contents:

- | | | |
|----------------------------|-----------------------------------|------------------------------------|
| 1 - Primed Metal Fascia | 1- AC Decora Wall plate | 2 - iPad Gen. 2 & 3 Spacer (white) |
| 1 - Metal iPad Retainer | 1 - Removal tool | 2 - PCB Bracket Thumb Nut |
| 1 - iPad USB connector PCB | 1- Single Gang Decora Cover Plate | 10 - Retainer Thumb Nut |
| 1 - AC power adapter | 2 - iPad Gen.1 Spacer (black) | 6 - iPad Gen. 2-4 foam pad |
| | 1 - iPad Depth Adj, Tool | 1 - PCB retro clip w/screws |

(1) Wiring and Wall Plate Install

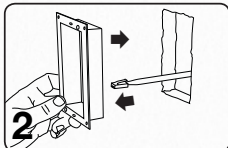
Installing the Wall plate

A TRUFIG fascia for iPad has two major components: 1) the fascia assembly that will be installed in the TRUFIG mounting platform, & 2) the single gang wall plate assembly. Both assemblies are shipped with the TRUFIG fascia assembly. Below are the instructions for wiring and installing the wall plate assembly. The fascia assembly instructions are on the next page.



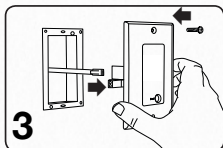
Step 1- Locate & Cut

Select a location for the wall plate bearing in mind that the wall plate must be located within four feet of a receptacle and within the recommended distance of the actual TRUFIG iPad Mounting Platform - see table below for max distances with different wire gauges. Cut an opening for a standard 1G low voltage ring.



Step 2 - Run Wire

Install a standard 1G low voltage ring in the new opening and run appropriate sized wiring between the new opening and the TRUFIG mounting platform. Wire the provided phoenix connector on both the device and wall plate end.



Step 3 - Connect

Connect the phoenix connector to the wall plate and attach with the screws provided. Next, plug the AC power adapter into a nearby receptacle and connect the other end into the newly installed wall plate.

Wire Gauge	Distance (feet)
22awg	75
20awg	120
18awg	200

iPad Mini® Fascia Install

Fascia Assembly Contents:

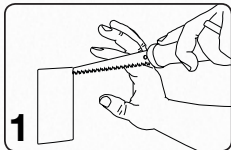
- 1 - Primed Metal Fascia
- 1 - Metal iPad Mini Retainer
- 1 - iPad USB connector PCB board
- 1 - AC power adapter

- 1 - AC Decora Wall plate
- 1 - Removal tool
- 1 - Single Gang Decora Cover Plate
- 2 - iPad Mini Spacer (white)
- 1 - iPad Mini Depth Adj. Tool

- 8 - Retainer Thumb Nut
- 4 - PCB Thumb Screw
- 4 - Solid Surface Stand-offs

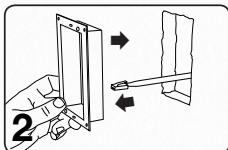
(1) Wiring and Wall Plate Install

A TRUFIG fascia for iPad Mini has two major components: 1) the fascia assembly that will be installed in the TRUFIG mounting platform, & 2) the single gang wall plate assembly. Both assemblies are shipped with the TRUFIG fascia kit. Below are the instructions for wiring and installing the wall plate assembly. The fascia assembly instructions are on the next page.



Step 1 - Locate & Cut

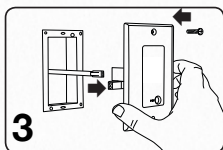
Select a location for the wall plate bearing in mind that the wall plate must be located within four feet of a receptacle and within the recommended distance of the actual TRUFIG iPad Mini Mounting Platform - see to right for max distances with different wire gauges. Cut an opening for a standard 1G low voltage ring. Note: CAT5 wire will not provide enough voltage unless multiple wires are combined together.



Step 2 - Run Wire

Install a standard 1G low voltage ring in the new opening and run appropriate sized wiring between the new opening and the TRUFIG mounting platform. Use provided phoenix connectors on both the device and wall plate end.

Wire Gauge	Distance (feet)
22awg	75
20awg	120
18awg	200



Step 3 - Connect

Connect the phoenix connector to the wall plate and attach with the screws provided. Next, plug the AC power adapter into a nearby receptacle and connect the other end into the newly installed wall plate.

(2) Installing the iPad Mini



Step 1 - Getting Started

Lay fascia with attached white spacers face down and place the iPad Mini inside (photo 1). When placing the device into the fascia be sure that the spacers are aligned with the notch on the white spacer aligned with the pinhole on the fascia, and the power button on the device (photo 2). This will provide access to the power button from the front side pinhole.



Step 2 - Back Cover

Place back cover onto white spacers and attach the eight female thread thumb nuts (photos 3 & 4)



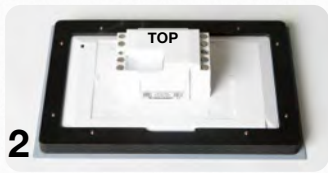
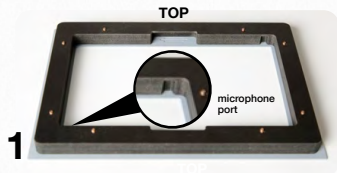
Crestron TSW-750 Fascia Install

Fascia Assembly contents:

- 1 - Primed Metal Fascia w/black substrate
- 1 - Metal Touch Panel Retainer
- 8 - Retainer Thumb Nut

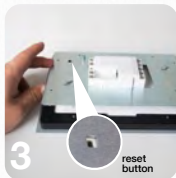
- 1 - Fascia Removal Tool
- 1 - Fascia Depth Adjustment Tool

Install



Step 1 - Orientation & Place

Before installing the touch panel unit into the the metal fascia, be sure that the top of the fascia is going to be aligned with the top of the touch panel - the microphone and speaker ports on the fascia must line up with those on the unit (photo 1). Once fascia is aligned properly, place the touch panel unit into the metal fascia (photo 2).



Step 2 - Back Cover

Place back cover onto the fascia and attach the eight retainer thumb nuts (photos 3 & 4). Notice that the reset button can still be accessed through the metal retainer (photo 3).

Step 3 - Level and Attach

Using the provided adjustment tool, ensure that the magnets are adjusted to the correct depth. Place the adjustment tool provided across the corner of the mounting platform and let it rest on the finished wall surface. The stem part of the tool should touch the top surface of the magnet. Use a screw driver to adjust the magnet height if necessary (photo 5). Click the fascia into the wall (photo 6). If fascia needs to be removed, use provided suction cup. It is recommended to remove it by attaching on the screen surface next to one of the corners.