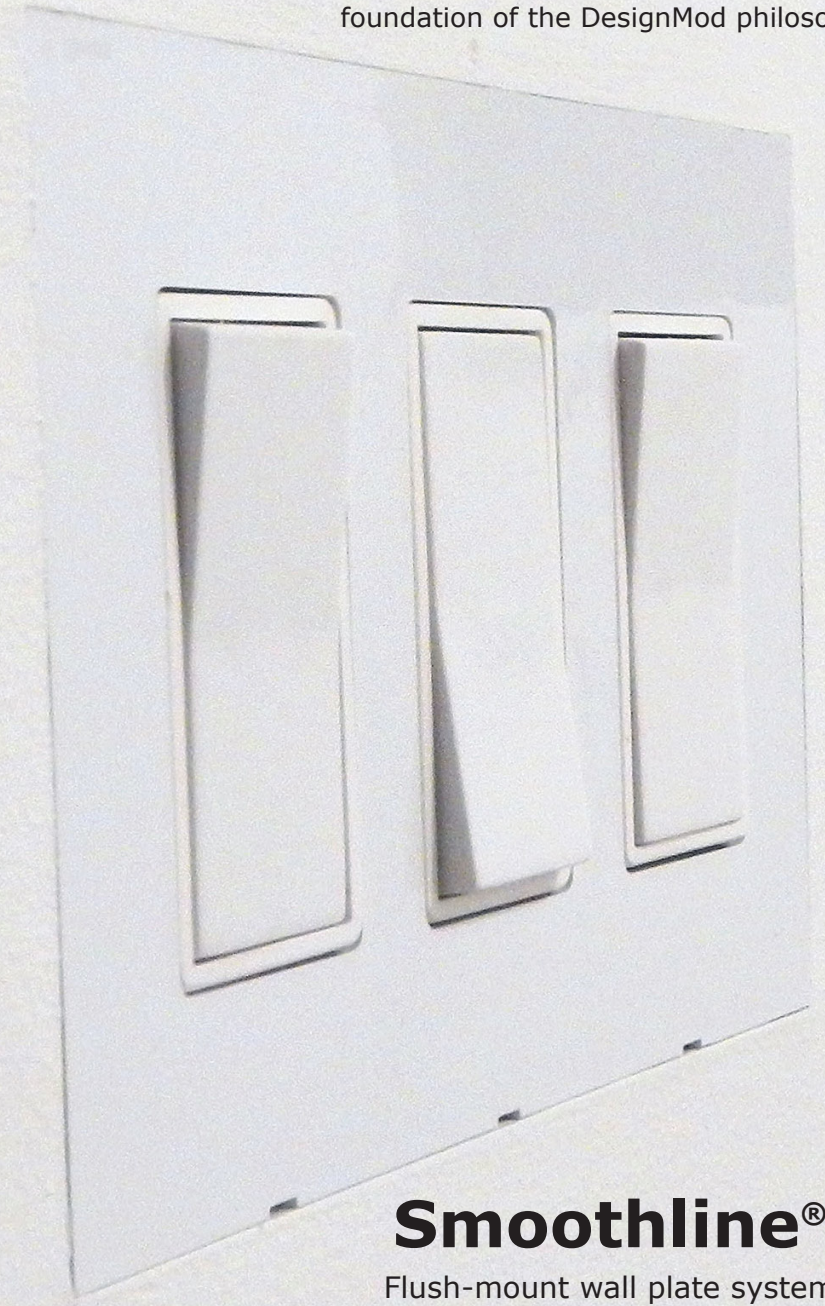


Clean lines, uninterrupted flow, making an impact with understated details – the hallmarks of modern architecture and the foundation of the DesignMod philosophy



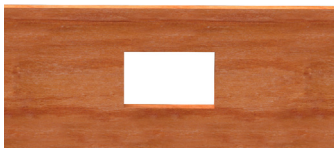
**Smoothline®**

Flush-mount wall plate system



# Smoothline®

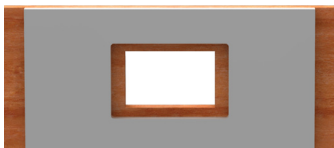
Flush-mount wall plate system  
wood installation instructions



1. Cut a hole to accommodate the junction box. If using a Carlon B114R old work box, cut the hole 3 3/4" x 2 3/8". If using a different box, cut the hole to accommodate the box.



4. Insert and secure the junction box.



2. Attach the router template to the wood, centered over the cutout for the junction box.



5. Insert the flange and wire and attach the outlet or other accessory.



3. Rout out the flange area 0.39 inches deep using a 1/4" router bit and a 1/2" router template guide collar. The resulting inset will measure 4 5/8" x 2 7/8" with 1/8" radius corners.



6. Insert the final cover.

# Smoothline®

Flush-mount wall plate system  
drywall installation instructions



1. Install the junction box so the face of the box will be set back 1/4" from the face of the drywall.



5. Blend in the flange using standard joint compound.



2. Cut a hole in the wall board large enough to accommodate the wall flange. Install the drywall.



6. Remove the temporary cover and paint the wall.



3. Mark a line on the wall, centered on the junction box, to help level the wall flange. Attach the flange to the wall using an adhesive such as 3M's drywall spray adhesive and affix the flange to the junction box using the included screws.



7. Install the receptacle or switch if not installed previously.



4. Install the temporary cover to protect the flange and junction box during finishing.



8. Install the final cover.

**WARNING: Before installation confirm electrical service is disconnected. Always use a licensed electrician for electrical installation work. Install in compliance with all electrical codes.**

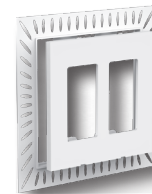
The UL-approved Smoothline® flush-mount wall plate system provides an innovative, cost-effective way to install outlets and switches flush with the wall for the ultimate in clean lines and modern sophistication.

The system uses standard finishing techniques and common outlets and switches. Available in gloss white for 1-gang to 4-gang drywall installations and in gloss white and wood veneer for 1-gang and 2-gang wood installations.

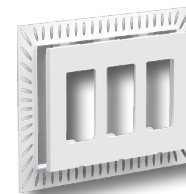
Available Products:



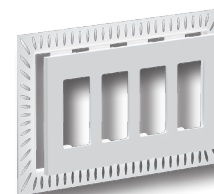
1-Gang Drywall White



2-Gang Drywall White



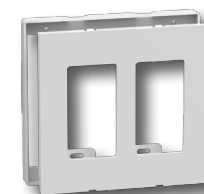
3-Gang Drywall White



4-Gang Drywall White



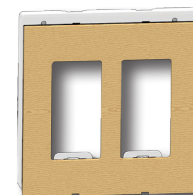
1-Gang Wood White Cover



2-Gang Wood White Cover



1-Gang Wood Wood Veneer Cover White or Black Flange



2-Gang Wood Wood Veneer Cover White or Black Flange

Don't let traditional outlet and switch covers detract from your design aesthetic – Streamline Your Design® with the Smoothline flush-mount wall plate system.

**DesignMod LLC**  
P.O. Box 13625  
S. Lake Tahoe, CA 96151

**www.designmod.com**  
info@designmod.com  
888-708-3663

Made in U.S.A.

©2019 DesignMod LLC