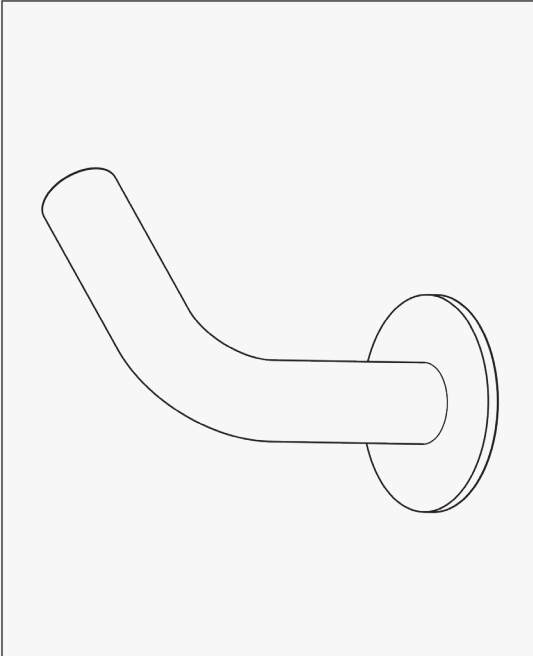
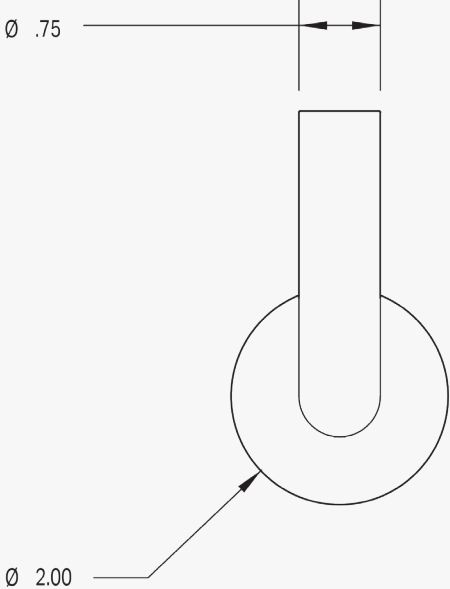
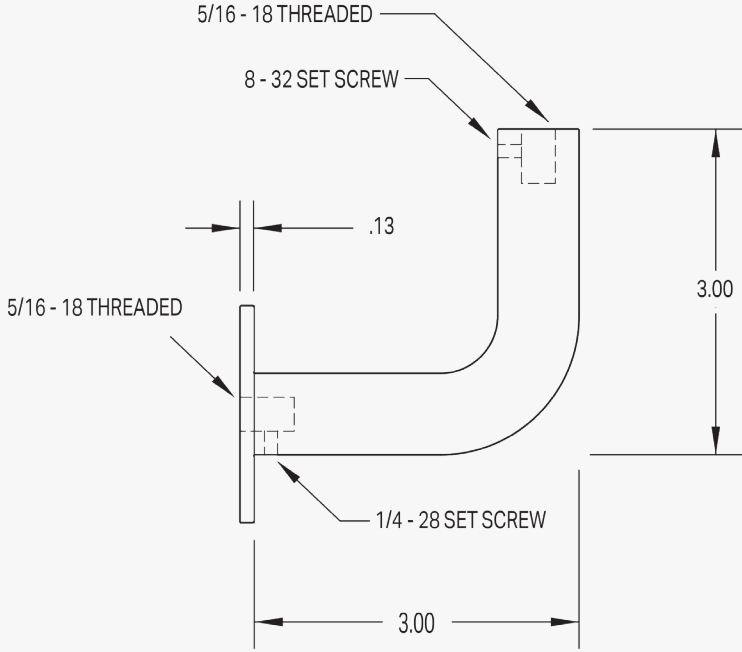


# Orla Handrail Bracket



**INCLUDES:**

- (1x) Bracket Elbow
- (1x) 2" Rosette
- (1x) 5/16-18 threaded wall mounting bolt (Fig. A)
- (1x) 5/16-18 threaded handrail rod (Fig. B)
- (2x) 5/16-18 threaded wall and wood anchor inserts (Fig. C)
- (2x) 1/4-28 set screws

1:2  
Inches

# Orla Handrail Bracket

---

## REQUIRED:

- 1/8" Allan Key
- Screwdriver
- Premium Epoxy for wood/metal/concrete

## INSTALLATION INSTRUCTIONS

1. Determine desired handrail height and mark off the locations. Finished handrail height should be 34" to 38" for commercial and residential applications measured from the leading edge of the stair tread or landing to the top of the handrail. You may need to make adjustments for your specific application or to meet local building codes.
2. Brackets should be spaced at 4'-0" max.
3. Drill a 15/32" diameter hole into the wall and blocking to approx 1.5" depth. Clear out all debris.
4. Tightly screw the anchor into the hole. Ensure it sits flush to the surface of the wall. Glue in place for added strength.
5. Place the rosette at the face of the wall, Screw bolt into the anchor through the rosette. If necessary, once cured, remove the bracket and fill in or repair any wall imperfections – replace bracket once complete.
6. Let the assembly dry; follow the epoxy instructions to ensure it cures completely before moving on.
7. If using a wood handrail, drill 15/32" diameter holes (5/8" to 3/4" depth) at the points where each bracket will attach to the bottom of the handrail.
8. Screw the threaded wood insert into the hole. Ensure it sits flush to the surface of the handrail. Glue in place for added strength.
9. If using a metal rail, tap the underside of the rail to accept a 5/16-18 NC thread. If solid, tap depth should be approx. 5/8" to 3/4".
10. Screw the threaded rod into the handrail insert.
11. Affix bracket elbow at the desired angle to the wall assembly and tighten set screws with Allen key.
12. Affix bracket elbow to the handrail assembly and tighten set screws with Allen key.

## NOTES:

- The Orla Bracket is intended for use for wood or metal handrails.
- The bottom of the handrail must be flat where it meets the bracket.
- 2" of solid wood blocking, wood stud or concrete is required to anchor the handrail bracket into the wall securely.

## INCLUDES:

- (1x) Bracket Elbow
- (1x) 2" Rosette
- (1x) 5/16-18 threaded wall mounting bolt (Fig. A)
- (1x) 5/16-18 threaded handrail rod (Fig. B)
- (2x) 5/16-18 threaded wall and wood anchor inserts (Fig. C)
- (2x) 1/4-28 set screws



Fig. A



Fig. B



Fig. C