

Product Documentation



Product Name: Soap dispenser 350ml, w/indicator

Article Number: 14.7045.02.006

Satin stainless steel

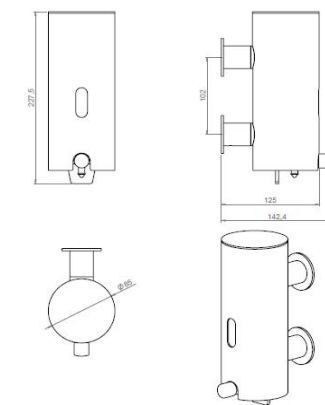
16.7045.01.006

Polished stainless steel

Photo:



Drawing:



Product Information:

Material: AISI 316 stainless steel
Grinded surface: Satin 320 grain or polished
Material thickness: Ø85

Height: 228mm
Width: 85mm
Depth: 142,2mm

Certificate: -

Warranty: 20 years (non moveable parts)

Spare Parts / Accessories:

14.7045.26.009 Soap dispenser, container only.
14.7045.26.011 O-ring with lib
14.7100.00.000 Key for soap dispenser
94.7045.0009 Fixing accessories

Product Specification:

d line Soap dispenser Ø85 x h 228 x d 125 mm with concealed fixing AISI 316 satin or polished stainless steel

The high humidity levels in the bathroom setting necessitates the use of a non-corrosive rustresistant stainless steel. the only metal used in d line's bathroom fittings is AISI 316, also known as marine quality stainless steel.

Related Products:

14.7046.00.XXX Cream soap with perfume
14.7046.0X.XXX Cream soap without perfume, 300ml/5ltr.

Mounting:

Screw Ø 6x70mm with plugs 10x40mm. Please use correct screws and plugs for the type of wall

Packing

1pcs per box

Maintenance:

Wash down with mild detergent, rinse off with clean water and dry off with soft dry cloth.

Environment:

No environmental risk and no risk of fire

Product Documentation



Product Name: Soap dispenser, 350ml, without indicator

Article Number: 14.7045.02.007

Satin stainless steel

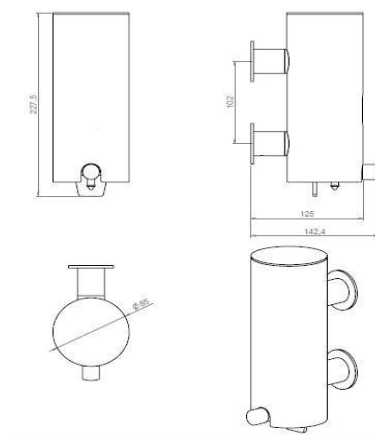
16.7045.01.007

Polished stainless steel

Photo:



Drawing:



Product Information:

Material: AISI 316 stainless steel
Surface finish: Satin 320 grain or polished
Material thickness / Radius: Ø14
Height: 227,5mm
Width: 85mm
Depth: 142,4mm

Product Specification:

d line Soap dispenser 350 ml without Indicator Ø 85 x h 228 x d 125 mm with concealed fixing AISI 316 satin stainless

The high humidity levels in the bathroom setting necessitates the use of a non-corrosive rustresistant stainless steel. the only metal used in d line's bathroom fittings is AISI 316, also known as marine quality stainless steel.

Certificate: -
Warranty: 20 years (non moveable parts)

Spare Parts / Accessories:

14.7045.26.009 Soap dispenser, container only.
14.7045.26.011 O-ring with lib
14.7100.00.000 Key for soap dispenser
94.7045.0009 Fixing accessories

Related Products:

14.7046.00.XXX Cream soap with perfume
14.7046.0X.XXX Cream soap without perfume, 300ml/5ltr.

Mounting:

Screw Ø 6x70mm with plugs 10x40mm. Please use correct screws and plugs for the type of wall

Packing

1pcs per box

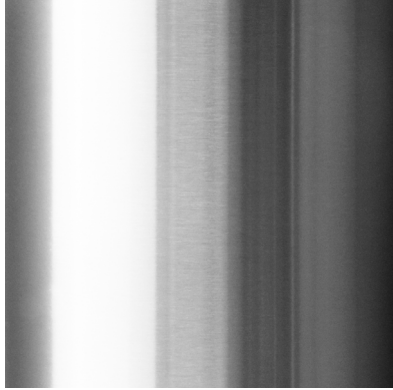
Maintenance:

Wash down with mild detergent, rinse off with clean water and dry off with soft dry cloth.

Environment:

No environmental risk and no risk of fire

Satin stainless steel



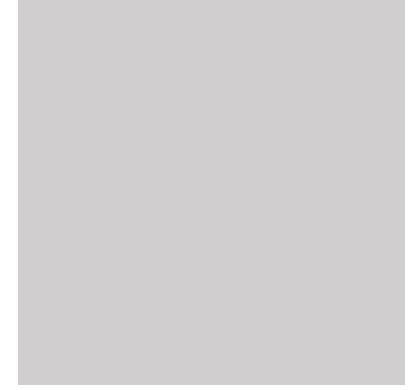
Polished stainless steel



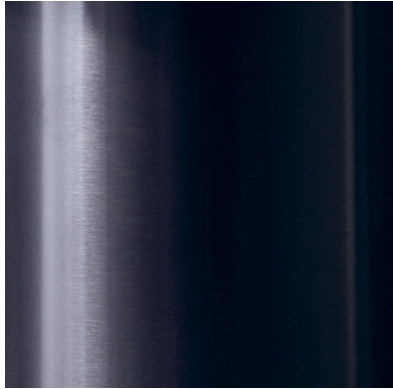
RAL 7037 Dusty Grey



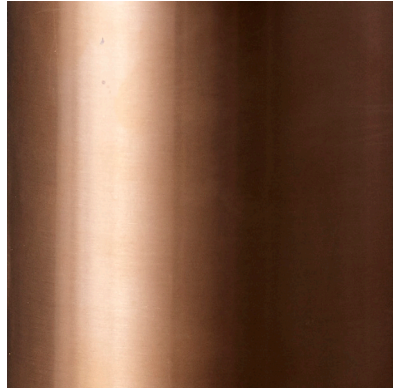
RAL 7047 Telegrey



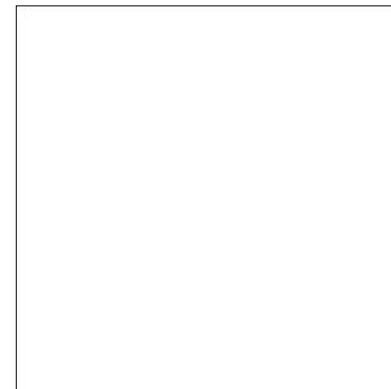
PVD gunmetal



PVD copper



RAL 9016 White



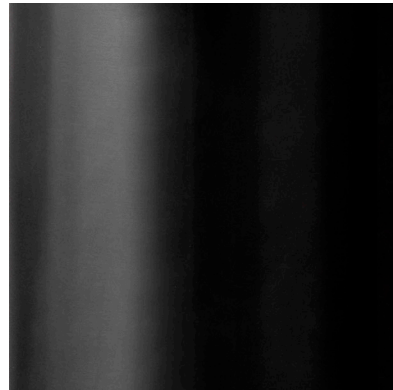
RAL 9005 Black



PVD brass



PVD charcoal



Brass



Please note that colours and finishes like these are difficult to replicate exactly on print and may deviate from the actual finish.