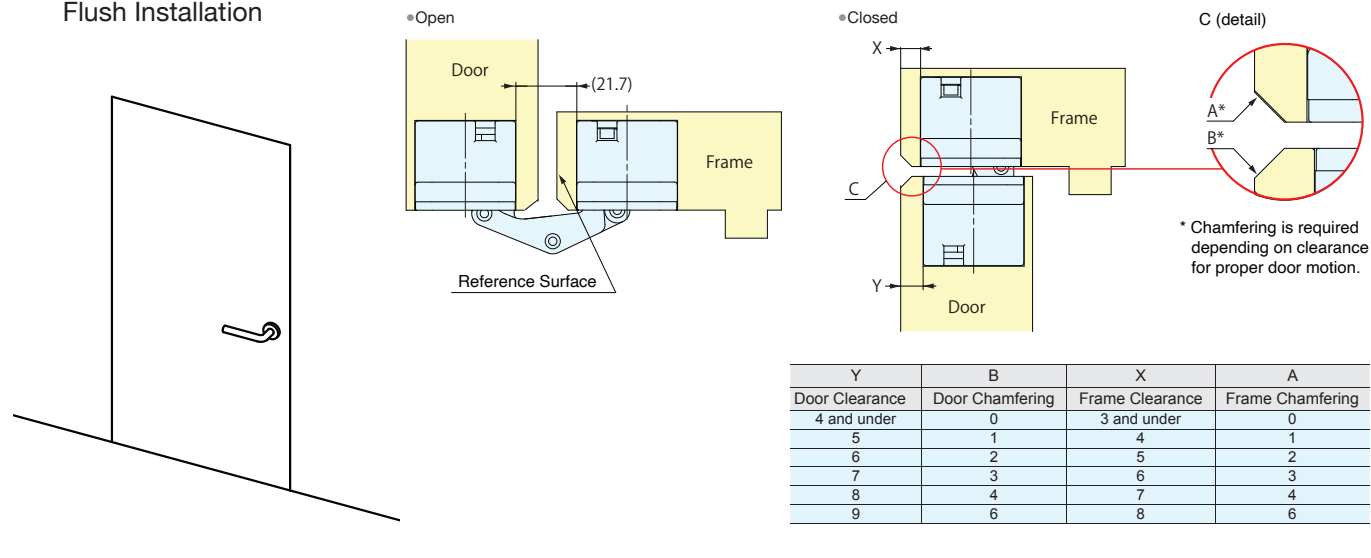
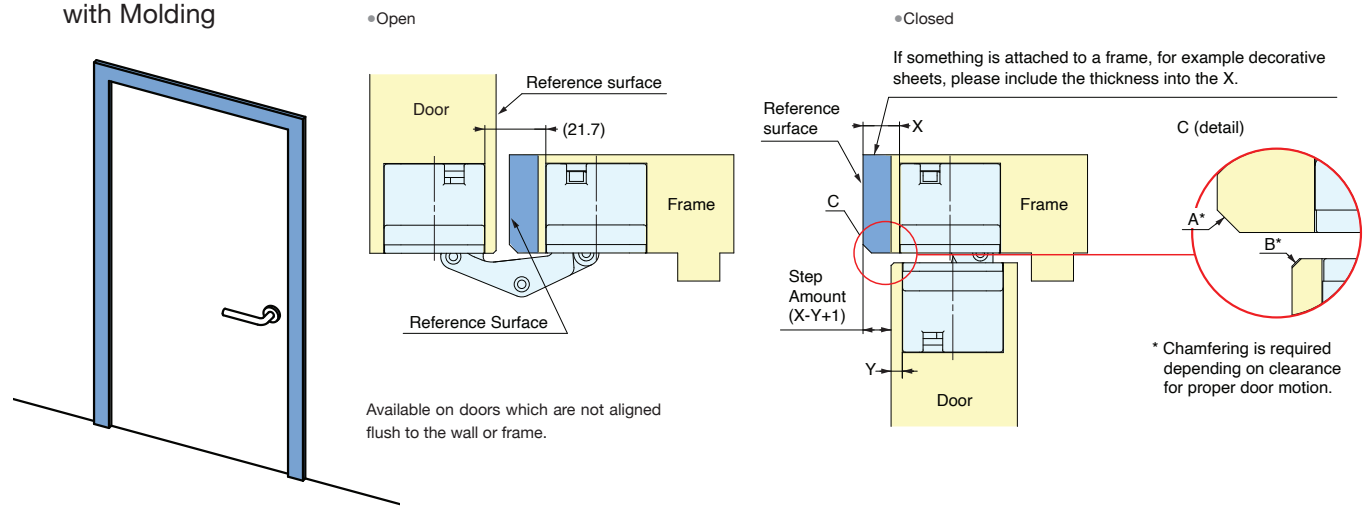


Flush Installation



Installation with Molding



Concealed Hinge for Cladded Doors

The HES3D-W190 is the UL rated, 3-way adjustable, concealed hinge you know from Sugatsune, now available for cladded doors. Never compromise style or quality for functionality.



Chicago Showroom
121 West Wacker Drive,
Chicago, IL 60601
www.sugatsune.com

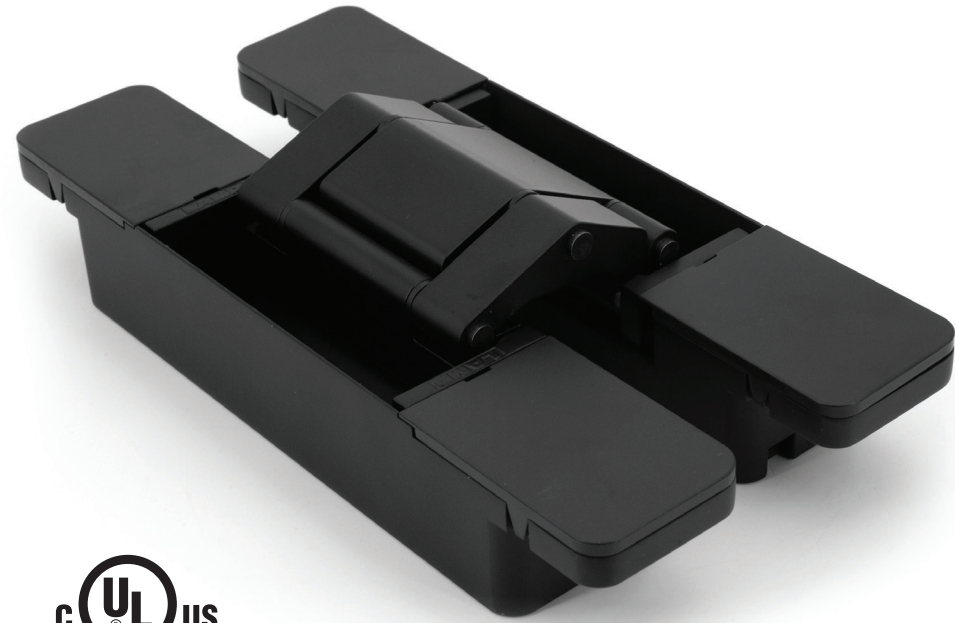


Share or watch this video featuring our HES3D-W190 hinge for cladded doors



LIT-HES3DW190-2021

3-WAY ADJUSTABLE CONCEALED HINGE For Door Moldings



Select models only

- Has a long arm for a wider throw, allowing 3/8" (10 mm) clearance for flush installation or 1/2" (13 mm) clearance for installation with a molding. Opens to 180°.
- Features 3-way adjustability (vertical, horizontal and depth).
- UL Rated, up to 3 Hours (DC, DN, and BL models only)
- Flanges come apart for the door to be provisionally hung for making adjustments. This provides a quick and easy installation when ready for fixing screws.
- Replacement screw covers available for all finishes.
- Only the HES3D-W190PN model includes metal cover plates*, all other models include plastic cover plates.

No.	Part Name	Material	Finish/Color					
			DC	DN	BL	PN	WT	PB
1	Body	Zinc Alloy (ZDC)	Satin	Nickel	Enamel Black	Nickel	Enamel White	Brass
2	Base Frame							
3	Arm	Aluminium Alloy						
4	Shaft	Stainless Steel	Plain	Plain	Plain	Plain	Plain	Plain
5	Screw Cover	ABS/Stainless Steel*	Silver	Dull Nickel	Black	Nickel	White	Brass

Item Name	Finish	Door Size			Door Weight		Opening Angle	Weight (g)	Box (pcs)	Carton (pcs)
		Width	Height	Thickness	2 pcs	3 pcs				
HES3D-W190DC-UL	Dull Chrome	Max. 36" (915 mm)	Max. 96-1/16" (2440 mm)	Min. 1-5/8" (42 mm)	Max. 220 lbs (100 kg)	Max. 275 lbs (125 kg)	180°	1231	-	12
HES3D-W190DN-UL	Dull Nickel								2	12
HES3D-W190BL-UL	Black								2	12
HES3D-W190PN	Polished Nickel								2	12
HES3D-W190WT	White								2	12
HES3D-W190PB	Polished Brass	2	12							



Cut-Out Dimension

