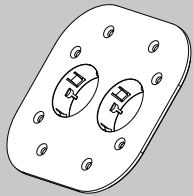


# BOCCI 22 - PRODUCT SELECTION GUIDE FOR ALTERNATE MATERIALS

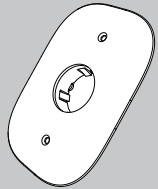
## 1: CONFIGURATION

Use alternate material mounting plates. Either 22.2.4 (double) or 22.2.5 (single) depending on the configuration desired. Follow through to the next steps to determine barrel depth.

Double  
(22.2.4 or corresponding assemblies)



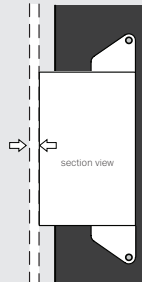
Single  
(22.2.5 or corresponding assemblies)



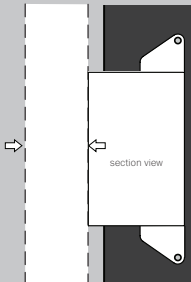
## 2: MATERIAL THICKNESS

Measure the distance from the finished face of the material to the back end of the material in which the 22 will be installed.

Less than 6mm (0.23")



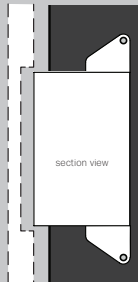
More than 6mm (0.23")



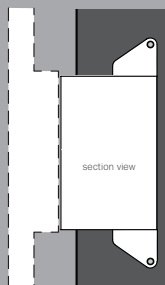
## 3: MATERIAL TYPE

Is the back end of the material easier to machine down (hardwood, MDF) or shim up (stone, tile) to reach either 6mm (0.23") or 31mm (1.23") thickness?

Easier to machine



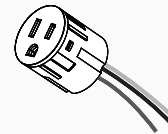
Easier to shim up



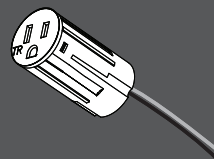
## 4: BARREL DEPTH

All operable components are available in standard barrel depth. Only the outlets are available in long barrel lengths.

Use STANDARD BARREL DEPTH components or assemblies for installation at 6mm (0.23") behind your material surface. Eg. 22.3.7, 22.5.4.



Use LONG BARREL DEPTH components or assemblies for installation at 31mm (1.23") behind your material surface. Eg. 22.3.7L, 22.5.4L.



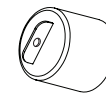
## 5: ADDITIONS

Depending on the material, there are additional tools you can use to make your installation easier.

For use with both standard and long barrel options.

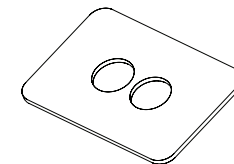
Trim cap

Use the trim cap when installing into a wet surface such as tile/grout, plaster, et cetera. One trim cap required per component. They may be reused.



Template

Use a router template for alignment and as a guide for routing. Depending on the material, use with a guide bushing or 36.5mm (1 7/16") Forstner bit, or CNC to cut holes in facing material



## DESCRIPTION

The 22 is a complete suite of interior wall accessories that challenges the traditional, tired and ubiquitous cover plate concept. Suitable for use in any alternate material: millwork, stone, tile, glass, concrete, plaster et cetera. For drywall installations, see our drywall assemblies. 22 operative components include: power outlets, data/telephone receptacles, cable connectors, line voltage on/off switches, and low voltage intelligent controls.

## NOTES

- + All tamper resistant components are sold as assemblies.
- + Please find installation details at [www.bocci.ca/22-series/resources/](http://www.bocci.ca/22-series/resources/)

Vancouver  
sales@bocci.ca  
www.bocci.ca

Purchase the 22 collection at  
[www.bocci.ca/22](http://www.bocci.ca/22)

US patent #7,956,295 & 8,232,482