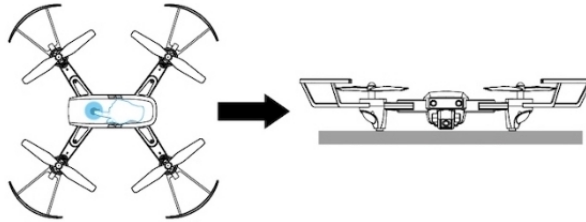


# ← QUICK START

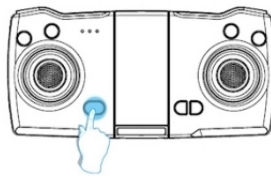
## Step 1: Turn on the power of aircraft and place it on a horizontal plane

Then aircraft indicator will fast-flash, which means aircraft enters the pairing state automatically.



## Step 2: Turn on the power supply of remote controller

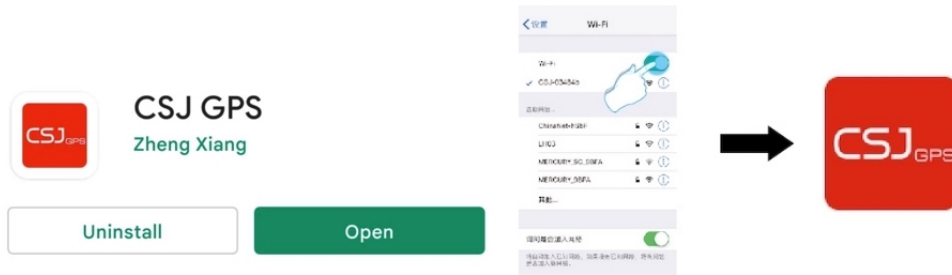
Turn on the power supply of remote controller, then remote controller make a “beep” sound again, the automatic pairing is completed.



## Step 3: Connection APP

Download the APP “GSJ GPS” from the app store

Turn on the WiFi function in the mobile device, and select “CSJ-XXXXXX” in the WiFi list. After connection, open the APP.



## Step 4: Gyro Calibration

Long press “Gyro Calibration” key for 3 seconds, remote controller will make a “beep” sound and the body indicator will fast flash for 3 seconds, which means the success of the calibration.



⚠️Note: In order to calibrate, aircraft must be placed on a level surface .



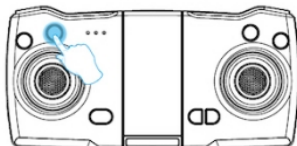


# QUICK START

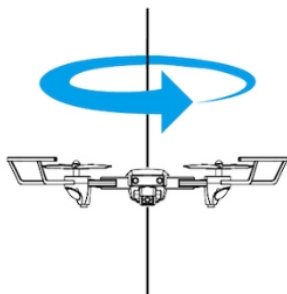
---

## Step 5: Geomagnetic calibration

1. Press and hold "Geomagnetic Calibration" key for 3 seconds, the remote control will make a "beep" sound, and the front and rear lights of aircraft will be off, which means it enters the geomagnetic calibration mode.



2. Rotate aircraft horizontally a circle (360°), the front indicator (blue light) lights up, and the horizontal calibration is completed.



3. After the horizontal calibration, erect the aircraft and rotate a circle (360°), the rear indicator (red light) lights up, which means the calibration is succeeded.



**⚠ Note:** When calibrating, it is more than 1 meter away from the ground and away from metal magnetic field interference!

## Step 6: GPS star searching

After "Gyro" calibration and "geomagnetic" calibration, the headlight will change from slow flash to constant fast flash, and then place aircraft on the open horizontal plane and when the headlight become constant on (the process will take a few min), it means the star searching is completed, and the aircraft can take off normally.

**⚠ Special note:** Aircraft can only fly after the outdoor GPS star searching. To fly indoors, turn off the GPS and press "GPS Switch" key, the remote controller will make a "beep" sound, and body eye indicator and return indicator on remote controller will turn off simultaneously, indicating that the GPS has been switched off and the aircraft can fly indoors.



