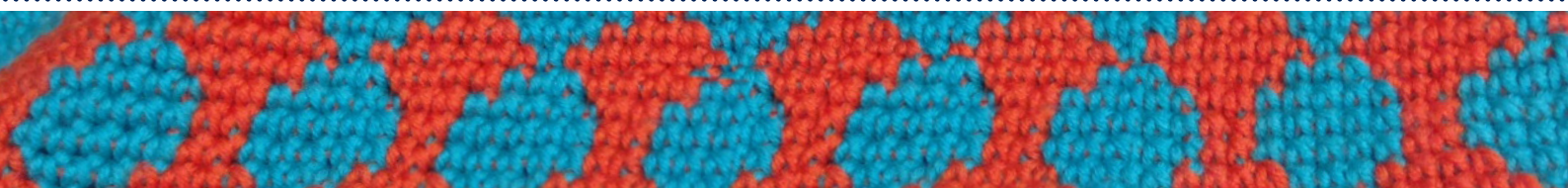




*Leutenegger* EST. 1891





## STYLISH TAPESTRY CLUTCH



# STYLISH TAPESTRY CLUTCH



## MATERIALS:

- Hook – 3 - 3.5mm
- DMC WOOLLY
-  **A** – burnt orange – 488.103 x 2 balls
-  **B** – turquoise – 488.077 x 2 balls
- 20 - 25cm zipper

## SKILL LEVEL – Intermediate

Approximate project time: 20 - 25 hours

This stylish clutch is made using crochet tapestry, which creates a lovely dense fabric as the yarn is carried across in preparation for a colour change. Using a slightly smaller hook also aids in achieving a lovely firm fabric.

## ABBREVIATIONS – Crochet terms

Written in UK Terms

dc – double crochet

ss – slip stitch

ch – chain

yrh – yarn over hook

revdc – reverse double crochet

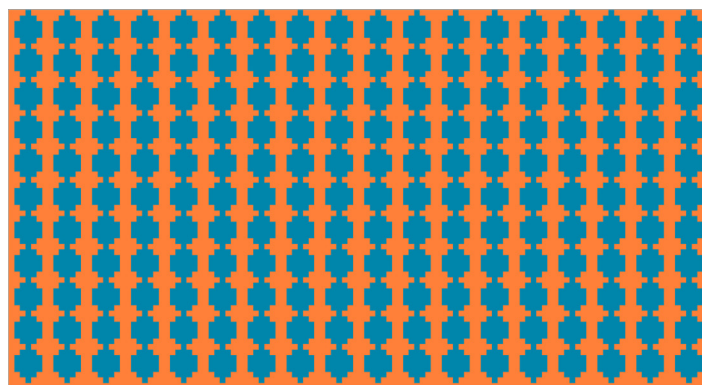
This pattern is worked over four rows. It is an inverted shell pattern, worked in multiples of five plus one. The borders of the bag are then added by using double crochet.

The lining is made by measuring the finished rectangle, before you add the sides and top. This is simply hand sewn into the bag – the tops of the bag will require you to gather or pintuck the material to fit the reduced width of the top edge of the bag.

## CHANGING YARN AND COLOUR

When changing yarn, use/adding new colour to your work - ALWAYS – on the last loop (YRH) of your final stitch, then proceed as pattern directs.

This pattern is REPEATED 18 times across (126 stitches) and REPEATED 11 times upwards (66 ROWS PLUS 2 FOR BASE)



FOUNDATION ROW YARN A – 127 2nd from hook dc across 126 dc

ROW 1 – ch1 (does not count as a dc) dc in each and every stitch across 126 dc

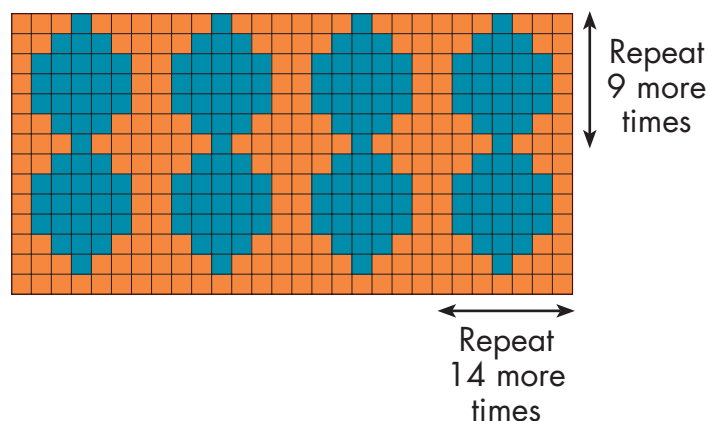


# STYLISH CLUTCH

ROW 2 – Repeat ROW 1

You will now follow the grid provided – the pattern is worked in a spiral formation from row 2 – always place a stitch marker at the beginning of each round. You never turn your work.

Each square represents a stitch – 1 dc. Follow the grid from right to left.



## HOW TO:

You carry the unused colour across and crochet over it – you change colour on the loop of your final stitch BEFORE the indicated colour change and then proceed in the next stitch with the right colour. For example: When you only have one stitch per colour you will be changing colour immediately with the last loop of the stitch you just made.

## ASSEMBLY and FINISHING

Using Yarn evenly dc across base of your clutch

Measure your finished clutch and create a felt lining – slightly smaller than your finished clutch

Insert felt – this should sit comfortably inside your clutch just scant from the edge. WRONG SIDES FACING

Now to add your zipper: insert outer edge of zipper between felt and clutch – pin on either side. It may make it easier to sew one in first as an anchor point, to help with the sewing.

Sew in the top edge of zipper together with lining – do this on both sides; bury your threads.

Along top edge of clutch using BOTH colours – revdc evenly across top edge once zipper is in place

## TWISTED YARNS

It is common for your yarn to twist – this is perfectly normal. You will have to stop every so often to untwist your yarns

TIP – You can create your own designs and patterns using grid paper and following the simple steps above – you can carry more yarn should you wish to incorporate another into your design. Likewise you can make the above pattern as large and as long as you would like.

