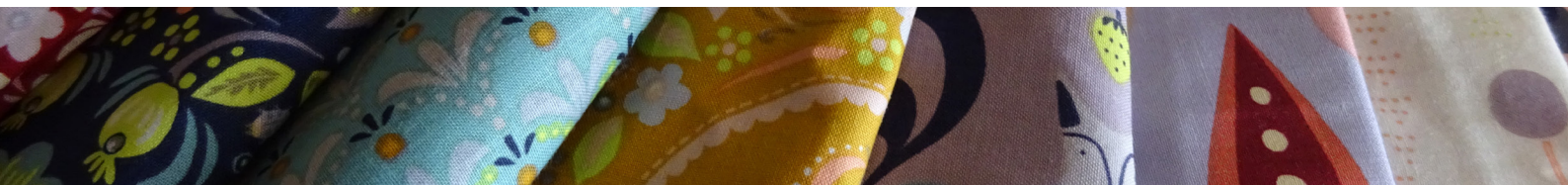




Leutenegger
EST. 1891



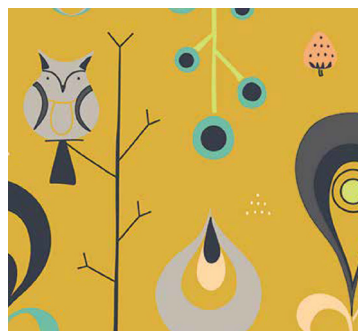
FOREST FABLE HIDE & SEEK



FOREST FABLE HIDE & SEEK

MATERIALS:

- Leutenegger fabric FOREST FABLE Fabric
L00903-12 HIDE & SEEK MUSTARD



- 8in embroidery hoop
- 8in round piece of medium weight iron on pella
- DMC Pearl Cotton 8 - 1 ball of each colour
 - 783 Medium Topaz
 - 3743 V Light Antique Violet
 - 503 Blue green
 - 754 Light Peach
- DMC Embroidery Needle 1765.1
- 8in round piece of felt for backing

PREPARATION

Following manufacturer's instructions, fuse the iron on pella to the back of the fabric. It will give the fabric a bit of bulk and stability.

Place fabric into the embroidery hoop. Trim excess fabric outside the hoop into a circular shape, leaving approximately 6 - 8 cm margin.

EMBROIDERY

Using matching colour of DMC Pearl Cotton embellish some part of the design.

Refer to illustration on page 3 for stitch placement or make your own choices.



ASSEMBLY

Thread some DMC Pearl cotton thread into a needle and make a knot at the end. Now sew a running stitch all around the fabric circle. Stay about 1cm in from the edge of the fabric. Sew full circle until you find yourself back at the starting knot.

Grab a knot and tie both ends of the thread together, ease the fabric along the thread, aiming to get the ruffles evenly spaced. The ruffles will come toward the center of the back of the embroidery, and lay reasonably flat.

FELT BACKING

Trace around the edge of the outer ring of the embroidery hoop with fabric marker. Cut out the circle of felt just inside the marker line.

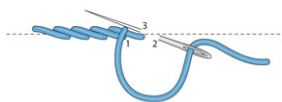
Stitch felt in place with matching thread or run a line of hot glue along the back of the embroidery hoop and place your felt circle in place.



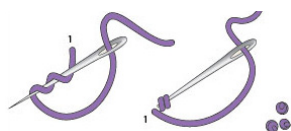
FOREST FABLE HIDE & SEEK



STEM STITCH



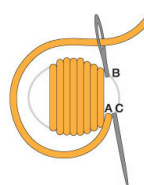
FRENCH KNOT



STRAIGHT STITCH



SATIN STITCH



LAZY DAISY STITCH

