

Leutenegger EST. 1891



**RUFFLE CROP TOP AND WRAP
AROUND SKIRT**

RUFFLE CROP TOP

Size: 8-12

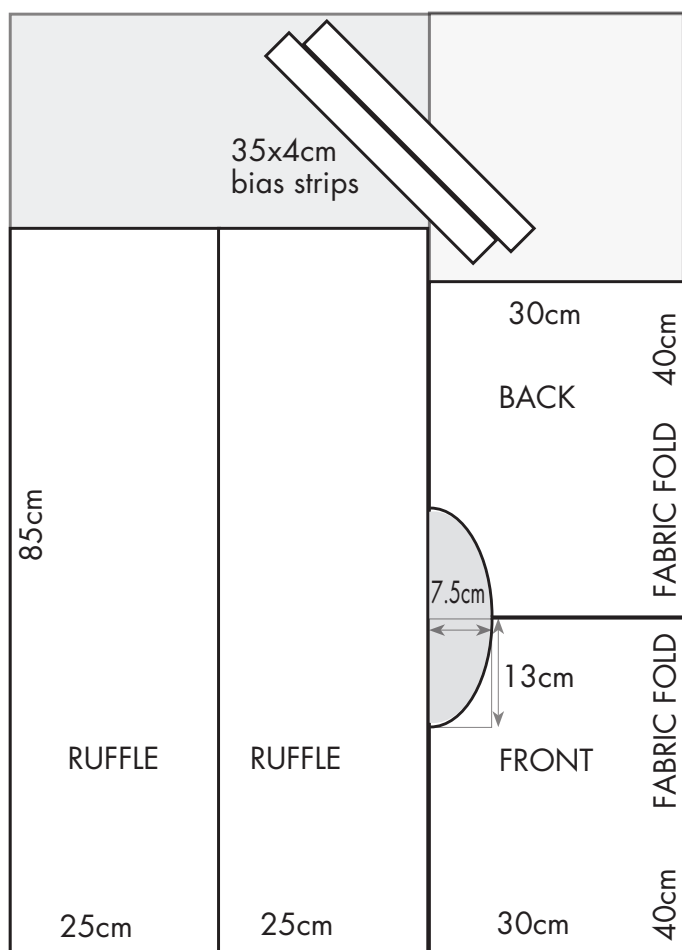
MATERIALS:

- 1.1mtr of Cotton Chambray fabric
- elastic
- matching sewing cotton

CUTTING

Cut

- two 25x85cm RUFFLE pieces
- FRONT
- BACK
- two bias strips 35x4cm each

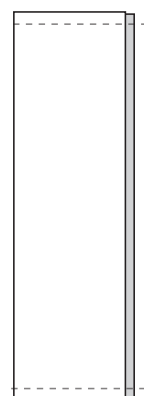


NOTE: Seam allowances are included in these measurements. The fabric requirement is for making top as shown in the photograph. Before cutting review the placement of colours in case you want to make your own choices.



STEP 1

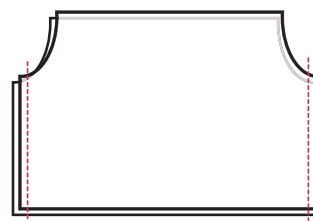
Place RUFFLE pieces together with the right sides facing and sew along the short sides to connect them. Zig zag or overlock the seam allowances.



STEP 2

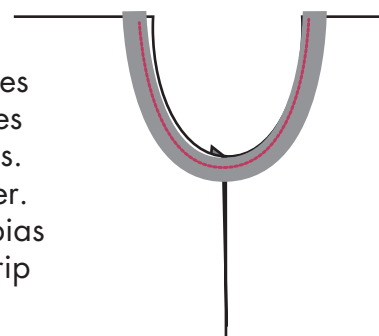
Place your FRONT on top of your BACK piece with the right sides of the fabric facing each other and sew along the sides of the body to connect them about 1cm from the edge.

Zig zag or overlock the seam allowances.



STEP 3

Pin bias strips right sides together to the armholes along the curved edges. Stitch all layers together. Trim excess length of bias strip. Fold over bias strip and baste it in place. Stitch along the folded edge.



RUFFLE CROP TOP

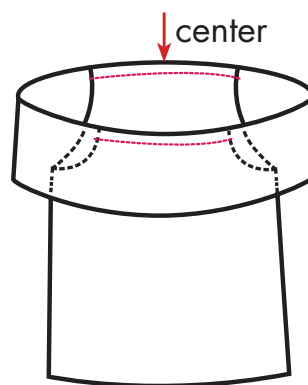
Size: 8-12

STEP 4

Turn RUFFLE and BODY pieces right side out.

To connect the two pieces, slide your BODY pieces into the RUFFLE loop and line up the center of the RUFFLE with the center of the BODY at the top. Pin them together.

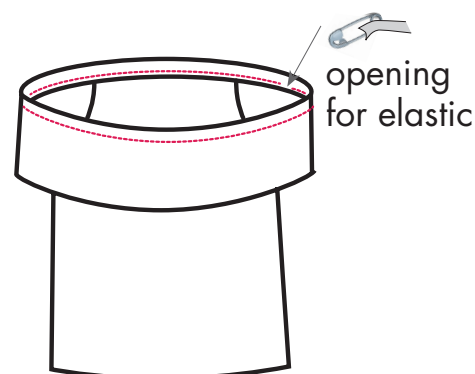
You will have some section of the ruffle on the edges that is not pinned to anything where your arms will go later. Sew along the pins 1cm from the edge of the fabric.



STEP 5

Fold the top edge of the entire RUFFLE backwards 0.5cm and press. Then, fold that same edge over 1.5cm. Pin and sew all the way around leaving a small opening to insert elastic.

With help of safety pin insert elastic and string it through. Sew the ends of the elastic together and sew up the opening.

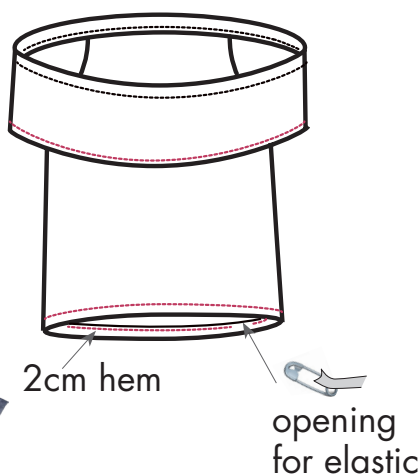


STEP 6

Stitch 2cm hem at the bottom edge of the top leaving a small opening to insert elastic.

With help of safety pin insert elastic into the ruffle and into the bottom of the top and string it through.

Sew the ends of the elastic together and sew up the opening.



WRAP AROUND SKIRT

Size: 8-12

MATERIALS:

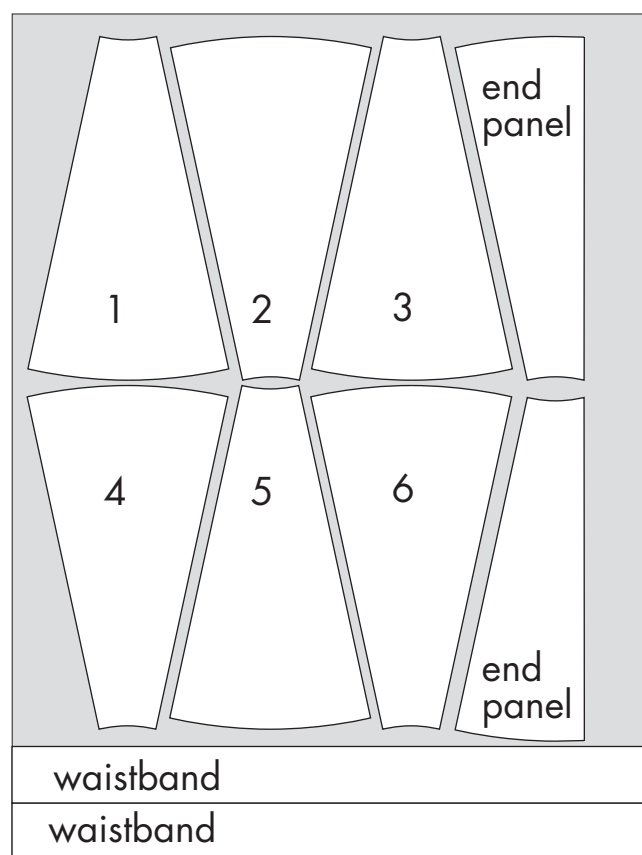
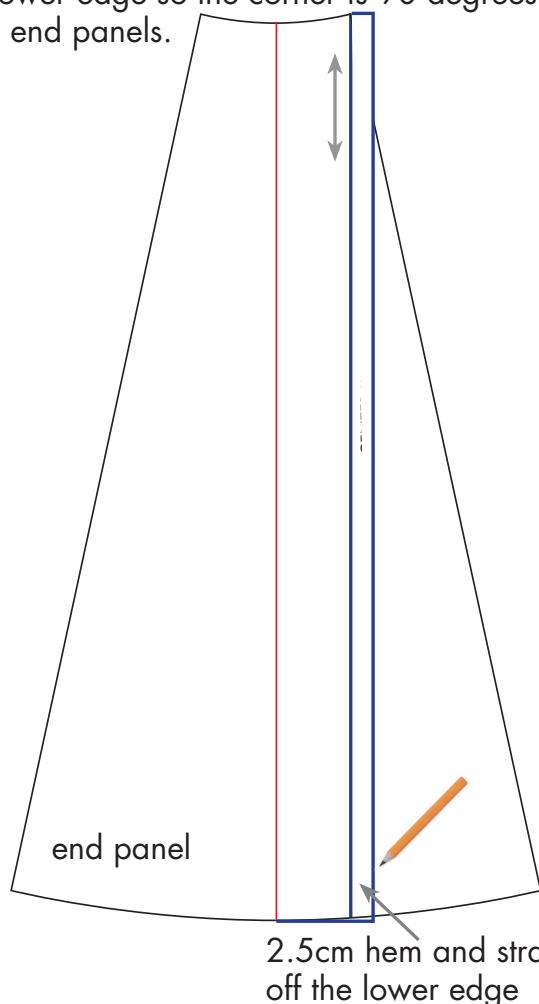
- 1.5mtr of Cotton Chambray fabric
- matching sewing cotton
- light interfacing for the waistband

STEP 1

Print out pattern on pages 6 and 7. Cut out pieces and join them together along the red lines.

Cut 6 of the pattern piece from your fabric, using the center line as the grain line and adding 1 cm seam allowance.

The skirt also needs a differently shaped panel at each end of the wraparound. Trace around the pattern you've just made, and add a line parallel to the centre grainline. Add a 2.5cm hem to the straight line you just drew. Straighten off the lower edge so the corner is 90 degrees. Cut two end panels.



NOTE: The finished length of the skirt is approximately 56cm. Make changes if required.

Cut 2 strips across the width of the fabric for the waistband - 10cm wide.

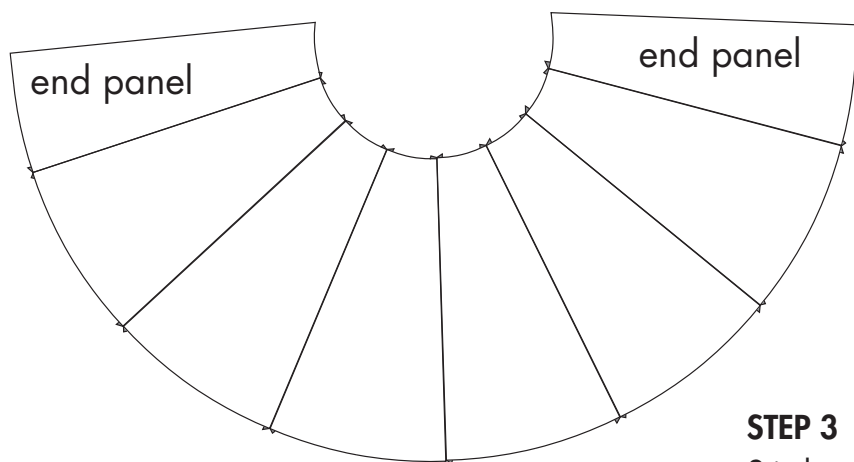
Cut 4cm x 80cm strip of light interfacing for the waistband.

WRAP AROUND SKIRT

Size: 8-12

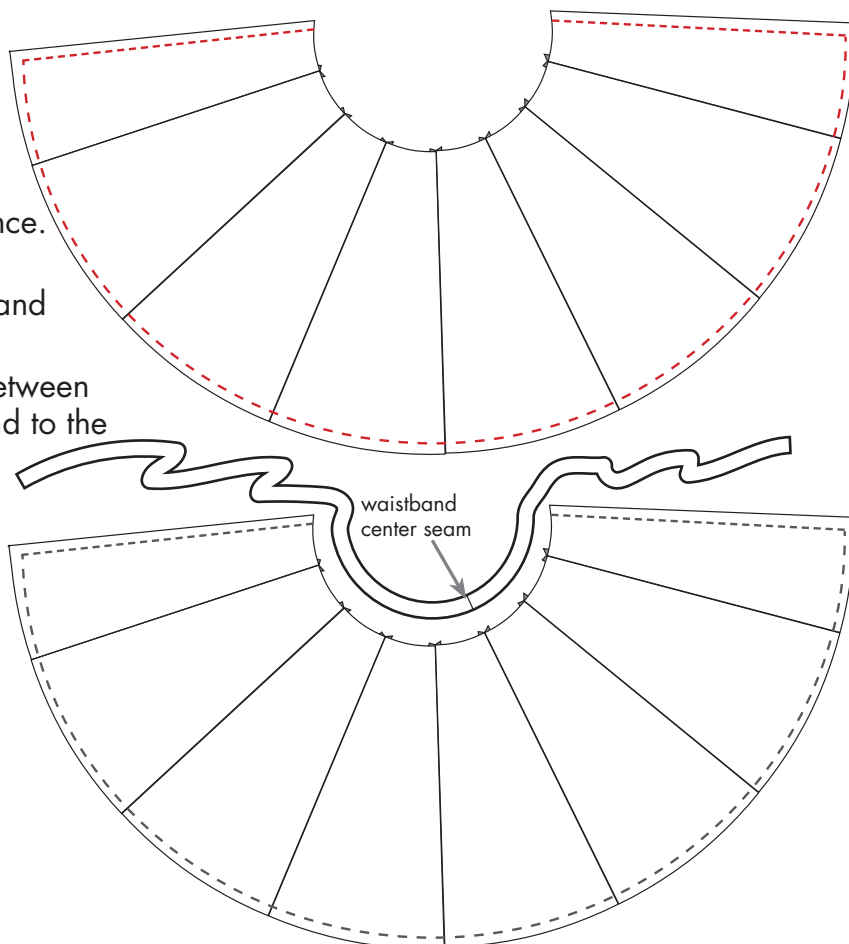
STEP 2

Sew the body of the skirt pieces together with right sides together using a 1cm seam allowance, forming a circle. Zig zag or overlock the seam allowances.



STEP 3

Stitch straight hem on the end panels and hem at the bottom of the skirt.



STEP 4

Sew the ends of the waistband right sides together, using a 1cm seam allowance. Press seam open.

We have made one tie of the skirt waistband a bit longer than the other.

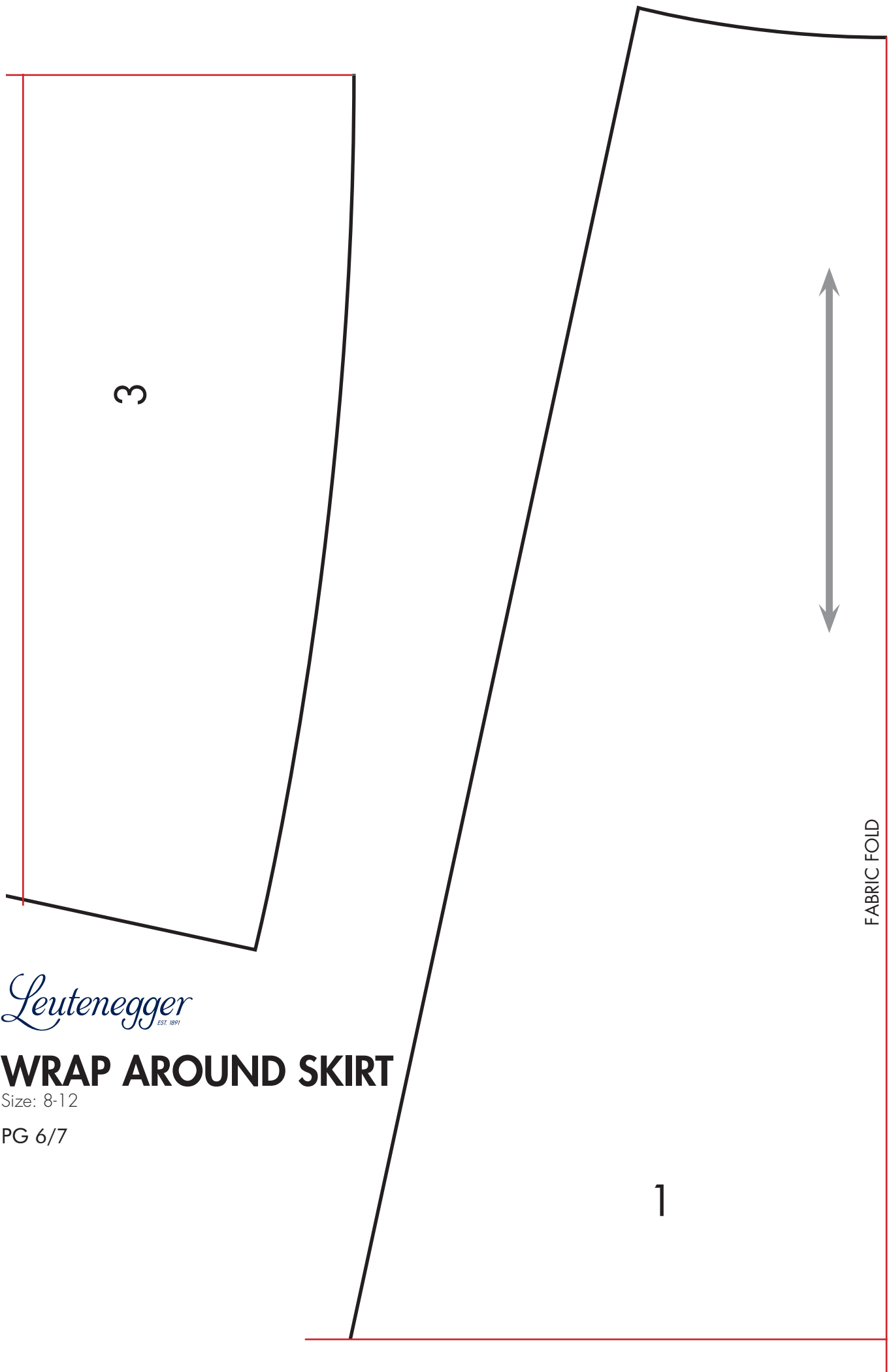
Align the center seam of the waistband between 3 and 4th panel on the skirt. Pin waistband to the skirt with right sides facing.

Attach interfacing only to the part of the waistband connected to the skirt panels.

Fold waistband over. Fold in seam allowances, baste them in place.

Press and stitch along the edge of the waistband.

The buttonhole needed to bring the tie through the waistband. Try skirt on, find the right spot for your waist and make a large buttonhole.

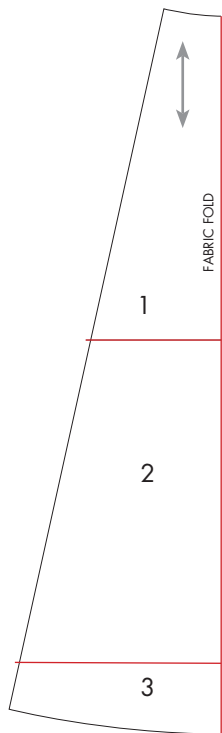


Leutenegger
EST. 1891

WRAP AROUND SKIRT

Size: 8-12

PG 6/7



FABRIC FOLD

2

Leutenegger
EST. 1891

WRAP AROUND SKIRT

Size: 8-12

PG 7/7