



BIRCH
CREATIVE



**MERRY & BRIGHT STOCKINGS
LIBERTY.**
FABRICS






MERRY & BRIGHT STOCKINGS

CUSHION SIZE: 10" x 17" (25 x 43cm)

MATERIALS:

- LIBERTY Fabrics - Merry & Bright Collection

-  **DANCING TREES 5928A**
One 4 1/2" x 7" piece
One 4 3/4" x 8" piece
One 4 1/2" square
-  **STARLIT SPARKLE 5934A**
One 4 1/2" x 7" piece
One 4 3/4" x 8" piece
-  **WILTSHIRE SHADOW GOLD 5755B**
Four 3 1/2" square
-  **FESTIVE FIRS 5932A**
One 4 1/2" square
12" x 18" backing piece
-  **HOLIDAY BERRIES WITH METALLIC 5936A**
One 4 1/2" square
One 4 3/4" x 8 1/4" piece
One 3" x 16 1/2" piece for top edge
One 1 1/2" x 9" piece for hanging loop

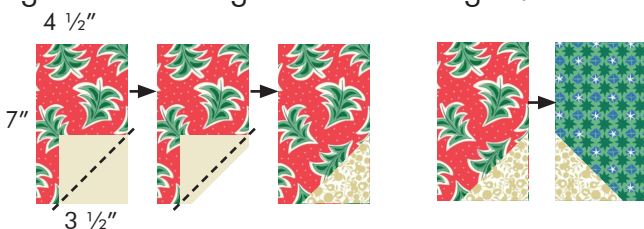
- Lining fabric 21" x 18"
- Batting

The fabric requirements is for making stocking as shown in the photograph. Before cutting review the placement of colours in case you want to make you own choices.

NOTE: Use 1/4in (6mm) seams unless otherwise instructed.

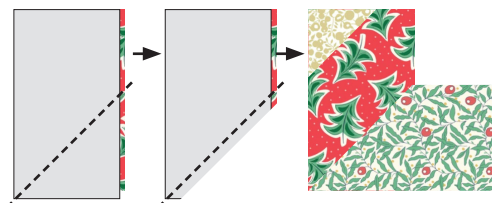
STOCKING FRONT

To start sew corner triangle units onto 4 1/2" x 7" pieces from DANCING TREES and STARLIT SPARKLE as illustrated below. Then stitch two sections together matching seams on triangles.



Sew corner triangle units onto 4 3/4" x 8" pieces from DANCING TREES and STARLIT SPARKLE in the same manner.

Take 4 3/4" x 8 1/4" piece from HOLIDAY BERRIES and stitch on diagonal onto DANCING TREES block as illustrated below. Cut excess fabric and press seams open.

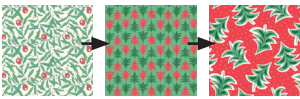




MERRY & BRIGHT STOCKINGS



Sew L-shaped piece to the 4 3/4" x 8" STARLIT SPARKLE block matching seams on triangles. Then stitch top and lower L-shaped blocks together matching up the center seams. Press seams open.



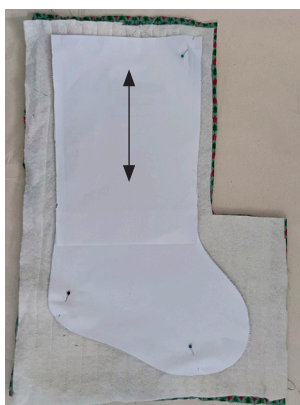
Take three 4 1/2" squares and stitch them together into a strip. Press seams open.



Stitch strip to the lower edge aligning the first seam of the bottom left corner with the first seam of the 3-square piece



Take your front and back stocking pieces and baste them to your batting. Quilt as desired. We just stitched some parallel lines.



Print Christmas stocking pattern template. Cut it out, and tape together. Place front and back stocking pieces with right sides facing and pin stocking template aligning center arrow on the template with center seam on the stocking front.



Sew front and back pieces together along the edge of template.



Trim 1/4" from the stitch line. Turn stocking inside out. Make sure all the curves are turned out nicely.

LINING

Take your lining fabric and fold it in half with right sides together. Place stocking template on top, pin and stitch along the edge. Trim 1/4" from the stitch line. Insert lining inside the stocking.

HANGING LOOP

Take 1 1/2" x 9" piece for hanging loop, fold and press in half lengthwise. Open and press edges to the center. Fold it over and stitch along the edge. Take 3" x 16 1/2" piece for top edge. Fold it and stitch along short edge. Press seam open. Fold it in half with right sides facing out.



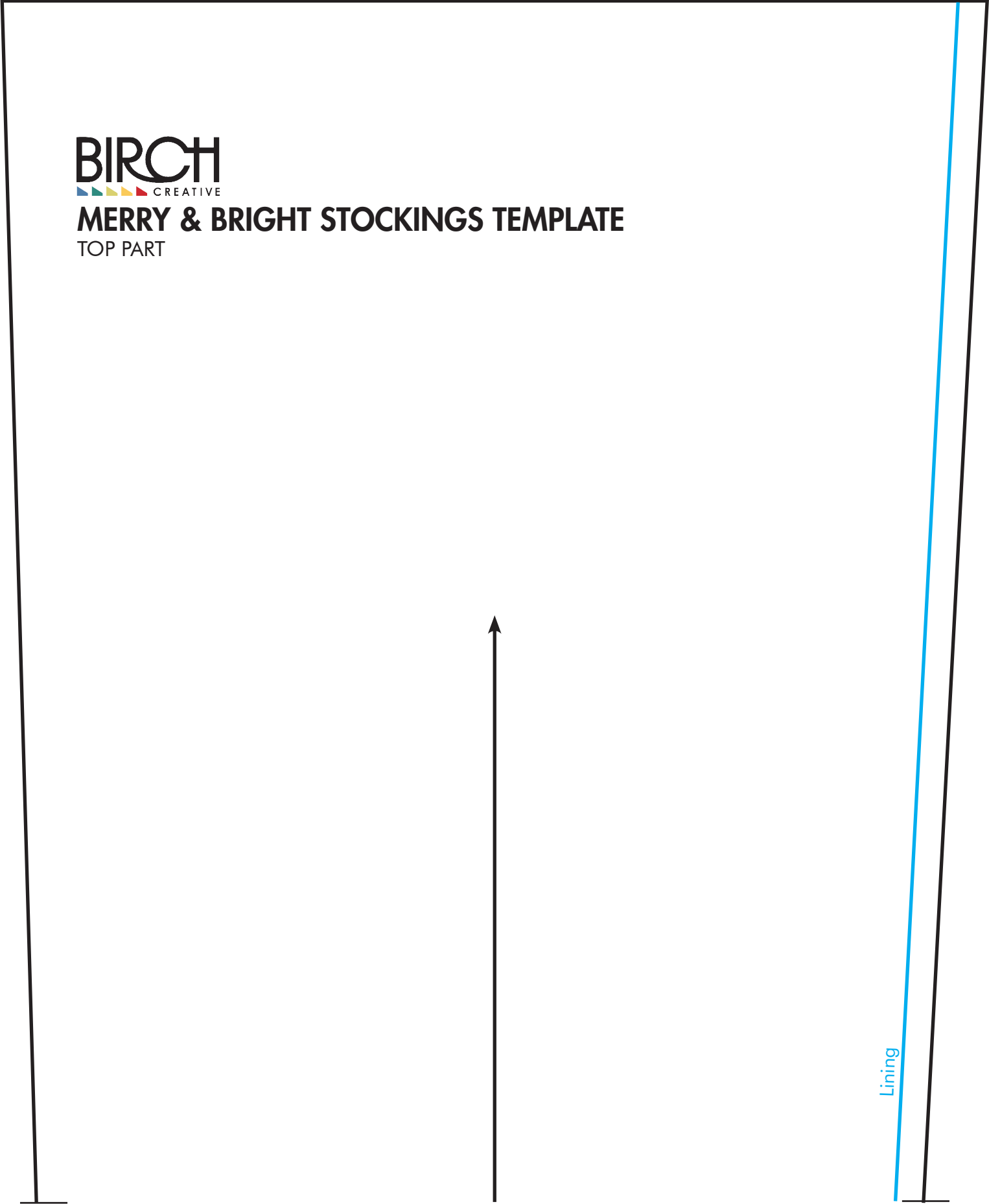
Align the back of the stocking seam, the back of the lining seam, the loop ends and seam on the border piece, and pin. Stitch along the top edge. Fold top border over the edge and handstitch it in place.

BIRCH

CREATIVE

MERRY & BRIGHT STOCKINGS TEMPLATE

TOP PART



NOTE: Stocking lining needs to be a fraction smaller to nicely. Follow the blue line when sewing the lining.

Lining



MERRY & BRIGHT STOCKINGS TEMPLATE
LOWER PART

