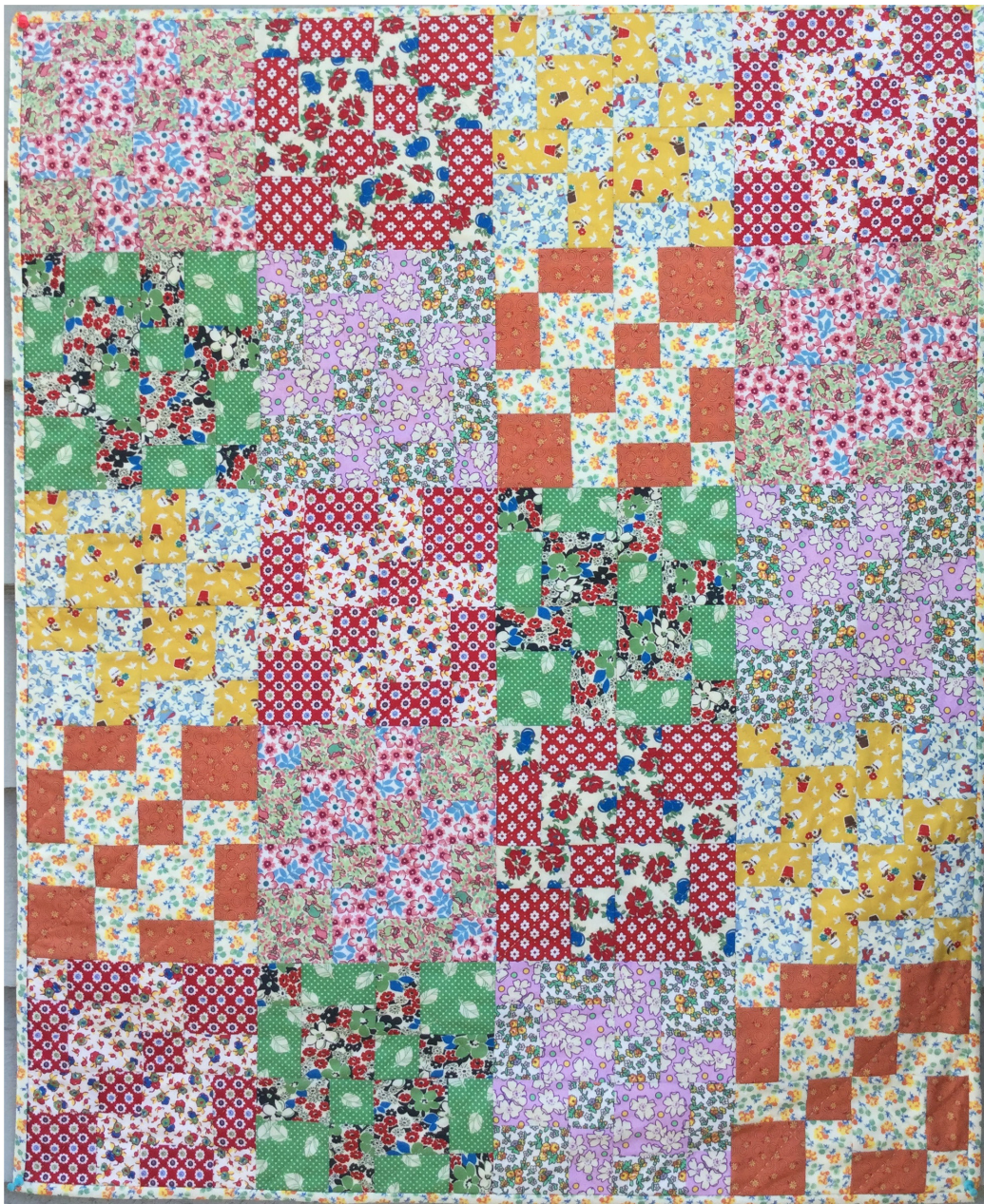




BIRCH
CREATIVE



BETTY PLAYS HOPSCOTCH QUILT
Designed by Deirdre Bond-Abel for
Hat Creek Quilts





BETTY PLAYS HOPSCOTCH QUILT

Designed by Deirdre Bond-Abel for Hat Creek QUILTS

Quilt size – 32" x 40" (82cm x 102cm)
Block size – 8" square (20cm square)

This gorgeous little quilt features fabrics from my Betty's Pantry Restocked collection that have been beautifully recreated by the team at Leutenegger from a 1930s vintage quilt in my collection.

The quilt is made from two Charm Packs for the blocks and 30cm of any of the prints for the binding.

There are fourteen prints in the collection and each Charm Pack has three 5" squares of each of the prints. From two Charm Packs you will then have six 5" squares of each print.

We gave each print a girl's name that were popular from that time period to add a nice personal touch to the fabrics.

Each block is made from two prints so I paired up the fourteen prints into seven combinations. You will need to make three blocks from each combination.

These are my pairs but you can select your own if you like.

Following fabrics were combined –



Virginia with Bessie



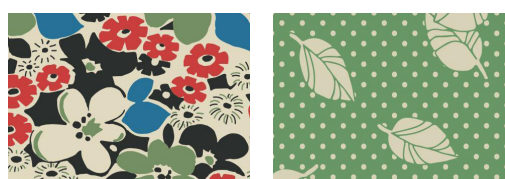
Beatrice with Mattie



Elaine with Wilma



Genevieve with Stella



Nancy with Ruth



Viola with Marcia



Vera with Elsie





BETTY PLAYS HOPSCOTCH QUILT
Designed by Deirdre Bond-Abel for Hat Creek QUILTS

NOTE – this will make twenty one blocks, only twenty are required for the quilt so the leftover block can be turned into a cushion or used in another project.

A ¼" seam allowance is used throughout to piece the quilt.
 Press seam allowance towards the darker fabric as you go and then in opposite directions for connecting seams.

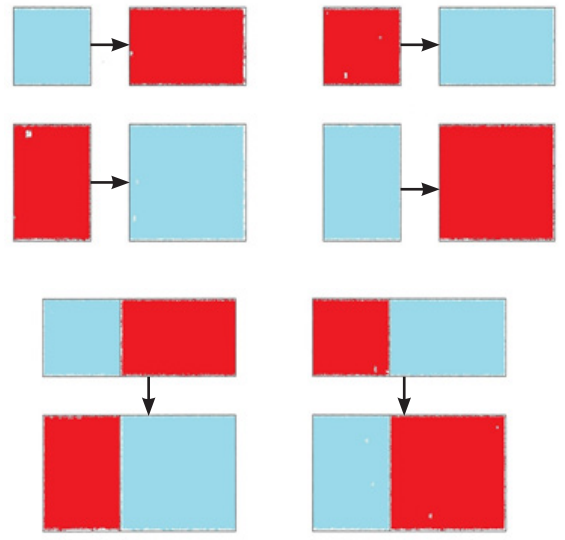
Take two 5" squares from one of the fabric combinations.

Cut each square across the top on the 2" line of the ruler, lift the ruler up and don't disturb the fabric and then cut down the left hand side of the square again using the 2" line on the ruler.

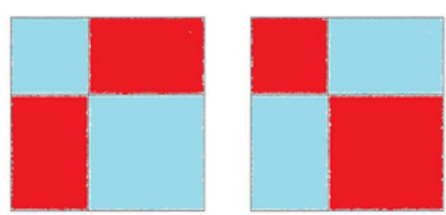
2"	2" x 3"
2" x 3"	3"

You will then have one 2" square, one 3" square and two 2" x 3" rectangles cut from each of the four 5" squares.

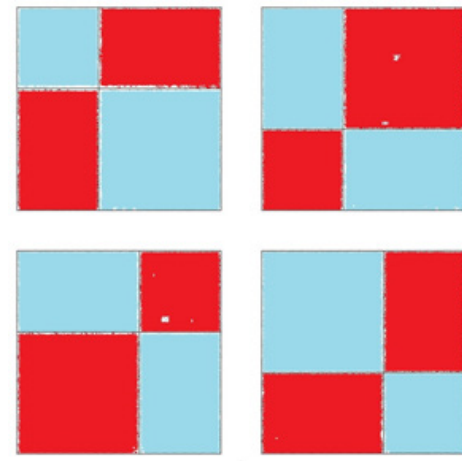
Sew the contrasting rectangles to the right side of the the small squares.
 Sew the other rectangles to the left side of the large squares.



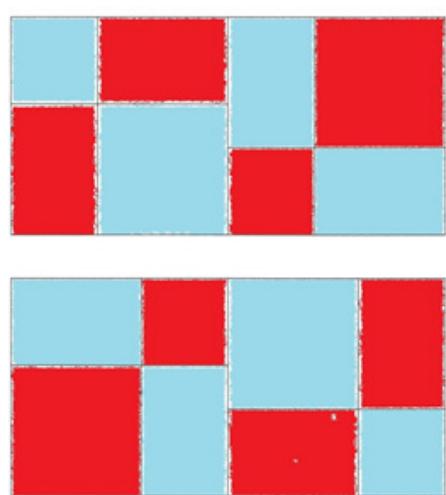
Join the strips together to make an uneven four patch unit from each combination. You will have two units with the one fabric used for the squares and two units where it will be used for the rectangles.

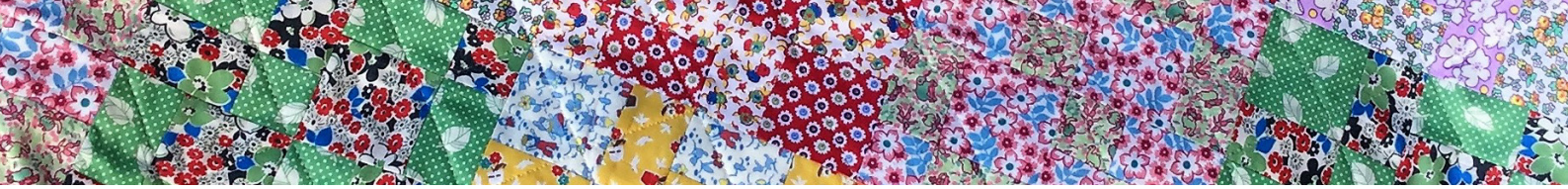


Arrange the units so that the matching squares run diagonally through the block.



Sew the top two together to make a row and the bottom two together to make another row.

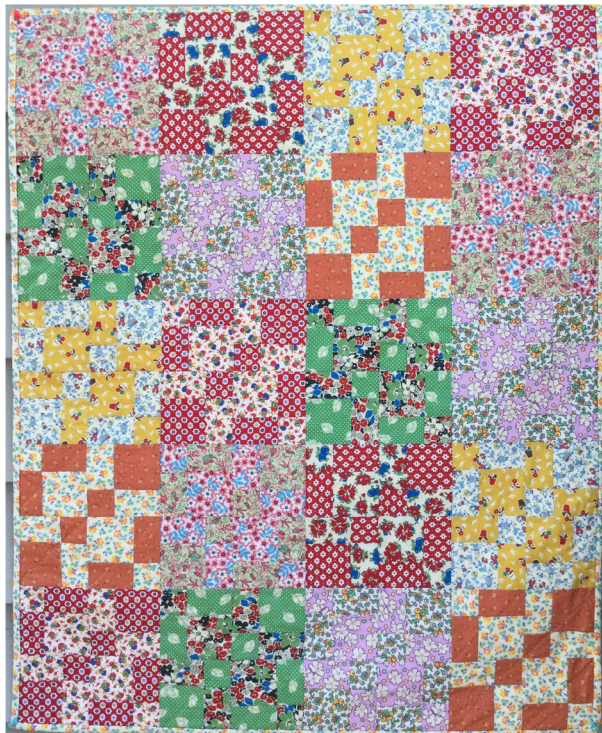
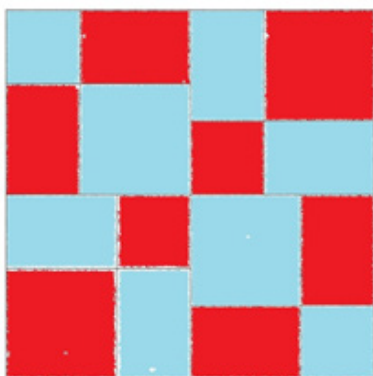




BETTY PLAYS HOPSCOTCH QUILT

Designed by Deirdre Bond-Abel for Hat Creek QUILTS

Sew the two rows together through the middle to make the block.



Make two more blocks from this fabric combination. Make three blocks from the remaining six fabric combinations.

Once you have made all twenty one blocks you are ready to sew them all together.

Arrange the blocks into five rows with four blocks in each row making sure you have a good spread of colour. Remember you will have one left over block. Position the blocks so that the squares are running diagonally through the quilt from corner to corner.

Sew the blocks into rows and then sew the rows together.

Your little quilt is now ready for quilting. This design was quilted very simply in straight lines on the diagonal.

Complete your quilt with binding using any of the prints from the collection.

Cut four 2 1/2" strips across the width of the fabric. Join these together at their short ends with a bias seam.

Fold the strip in half along the long edge, wrong sides together and press with an iron to make a double fold binding.

Machine stitch along the edge of the quilt on the right side, mitreing the corners as you go.

Fold the binding over to the back and hand stitch down.

Enjoy your little quilt.

