

## WALLPLANKS CLICK AND TAP VACCUBOND™ INSTALLATION INSTRUCTIONS

Required tools and materials: J-roller, tapping block, level, TSP (trisodium phosphate) or TSP Substitute pencil, saw (miter saw, jigsaw or handsaw), hammer & finish nails or brad nailer.



Environment/ Acclimation: Permanent HVAC must be maintained between 60 degrees and 75 degrees with a relative humidity between 30-55% for a minimum of 14 days prior to installation as well as during installation to insure proper adhesion. Acclimation of the planks is not required as long as the environment HVAC is controlled.

Inspection notice: Inspect planks thoroughly prior to installation. If boards are not acceptable, do not install and contact [info@fromtheforest.com](mailto:info@fromtheforest.com) immediately.

### Installation Options:

- The planks can be installed on any structurally sound, clean, dry, and flat surface. To install as flooring, please refer to flooring installation instructions.
- Cement block, plaster, plywood and gypsum surfaces should have a minimum of one coat of primer sealer prior to installation.
- If you are installing in a bathroom, it is highly recommended to use a brad nailer into the studs in addition to the pre-applied adhesive. **Do not** install wallplanks in a steam room, sauna or as a shower wall.

#### 1. Clean/drying the wall surface.

- Turn off power to the installation area while working around wall outlets and light switches. Remove electrical cover plates, protruding nails and loose paint
- Sponge wash with TSP (trisodium phosphate), to remove build up of grease, grime, mildew, chalked paint or anything else that may affect the bond of the VacuuBond™ adhesive.
- If the wall has a heavy drywall texture, it will need to be block sanded or skim coated and primed so the VacuuBond™ adhesive can achieve a firm bond. Wallplanks can be installed over well bonded smooth wallpaper. Textured wallpaper should be removed and the wall cleaned with TSP prior to installation.
- After walls are thoroughly cleaned, they must be dried with a microfiber cloth and given at least 2 hours for drying time
- For extra assurance, you may apply From The Forest primer.

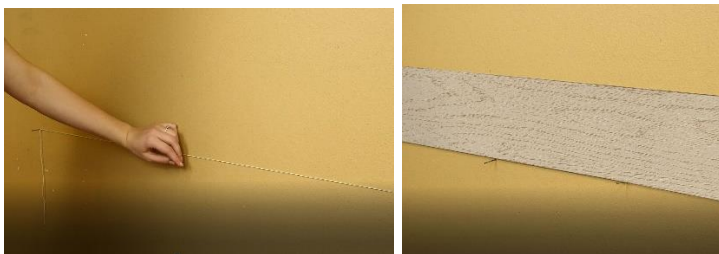


2. Dry lay the planks. Work from several open boxes and “dry lay” before permanently installing to create your desired look. We recommend dry laying your planks to ensure that the color mix, staggering pattern and board sizes are aesthetically pleasing.



3. Trim pieces. For walls that have inside or outside corners, trim pieces may be purchased separately to create a finished look. If trim pieces are needed on your project, measure 1 ¾" back from where you wish the wall to end and then draw a vertical plumb line using your level. This line will be your guide to where the planks need to be cut. The trim piece is made to overlay the edges of the plank and should be nailed to the wall using small finishing nails or a brad nailer **after** the entire wall is installed.

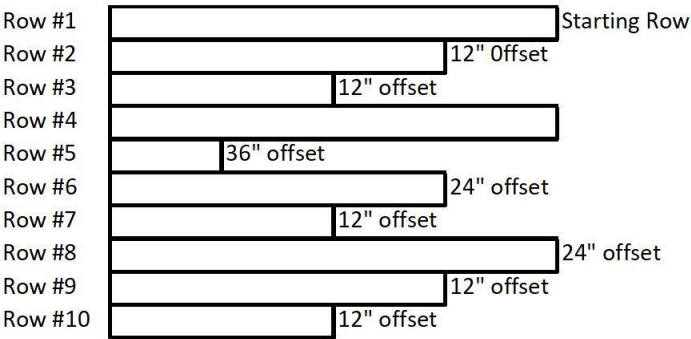
4. Starting Line. There are multiple ways you can establish your starting line. It is very important that the starting line, therefore the planks, are absolutely level. If your baseboard and ceiling are level, you can use one or the other to establish your starting line. If neither your baseboard or ceiling are level, you will need to establish a level line at eye level across the wall using a starting line & finish nails, chalk line or a pencil and a 4' level. To help establish an absolute straight starter line with the first plank, we recommend you tap 1 ½" finish nails halfway into the wall along the starting line at 12" intervals. The protruding nails will help position the starter planks along the starting line before they are adhered to the wall. This procedure will not be possible when installing over a block wall, in which case we recommend using a laser level as a guide. Use extra caution to ensure your first row is straight if you are not able to use nails as a guide. **TIP: DO NOT** adhere the plank until you have it placed in the right position. Once the material is adhered to the wall, it will be very difficult to reposition.



5. Applying the planks. Starting on the left side of the room, using the starting line as a guide, peel the paper off the VacuuBond™ adhesive and position the starter row planks groove side up along your line. Press into place, and j-Roll each plank immediately after installation of each board. If you placed positioning nails in the wall in Step 4, remove them now. When applying the next row of planks, make sure to approach the click and lock joint from beneath at a 45° angle and interlock appropriately. When approaching from above, be sure to only overlap the underlying shiplap joint. Make sure to use a tapping block to fully engage the click and lock profile.



6. Stagger the planks. Stagger the end joints as you work your way up and down the wall so that end joints do not line up from row to row. To accomplish this look and minimize your waste, use your cut off piece from one row to start the next row. A general rule of thumb to follow is to have a minimum of a 12" offset (+/- 2") and not to repeat the same seam for 2-3 rows. Please see the diagram example below.



7. Cutting the planks. Planks can be cut to fit by using an electric jig saw, miter saw, guillotine, hand saw or table saw. It is beneficial to have a sanding block handy to smooth the rough cut edges.

8. Unique cuts. Mark locations of light switches, electrical outlets and air vents on the planks before removing the paper liner. Cut and trial fit before removing the backing paper and installing. These cuts

can be made using a drill to create a starter hole, if necessary, and then cutting with a jig saw or scroll saw.

9. Installing the top and bottom rows. When installing your top and bottom rows, the planks can be ripped lengthwise by using a jigsaw or table saw.

10. Important! To help set the VacuuBond™ adhesive after the installation is complete, the entire wall must be rolled using a j-roller to insure a strong bond. Failing to j-roll can lead to failed adhesion. J-roller's are available for purchase at [www.wallplanks.com](http://www.wallplanks.com). If a trim piece is used to finish installation, it can be installed now using finishing nails or a brad nailer. Refer to Step 3 for trim installation instructions. For extra assurance, you may use 18 gauge finishing nails or a brad nailer every 16" on both sides of the plank as well as into the studs in the sub wall to further secure the planks.



11. Ceiling installations: For installation on ceilings, follow steps 1-10 and use 18 gauge finishing nails or a brad nailer every 16" on both sides of the plank to further secure the planks to the ceiling. It is important to nail the planks in place for ceiling installations so that they do not become a safety hazard and fall off of the wall.

12. Bathroom installations: For installation in bathrooms, follow steps 1-10 and use 18 gauge finishing nails or a brad nailer every 16" on both sides of the plank, nailing into the studs in the subwall to further secure the planks. Do not install wallplanks in a steam room or as a shower wall.

#### Wall Planks Care and Cleaning:

- Your Wallplanks are virtually maintenance free. However, in the event that your wallplanks need cleaning, we have you covered with our wood wall covering cleaner available on [wallplanks.com](http://wallplanks.com)! Daily or weekly cleaning/maintenance can be accomplished by using a clean dry cloth. If need be, water may be used. **DO NOT** saturate your wood wall. Use a slightly damp (wrung out) cloth only. Never use wax, detergents, polishes, abrasive cleansers or use oil based products on your wall.

Hanging pictures and other wall décor: Wallplanks are not load bearing. Wall décor such as mirrors, pictures and shelves can be mounted by drilling through the Wallplanks, provided the underlying wall provides sufficient support (i.e. wall studs). Use proper hardware to install any wall decor.

- Please see our website for warranty information. To view installation video go to [www.wallplanks.com](http://www.wallplanks.com).