



Amblyseius (Neoseiulus) andersoni

Mite Predator

DESCRIPTION:

A. andersoni is a predatory mite that feeds on numerous species of mites. Their polyphagous nature allows them to feed on thrips, pollen, fungi, and honeydew in the absence of an adequate mite pest food source.

TARGET PEST:

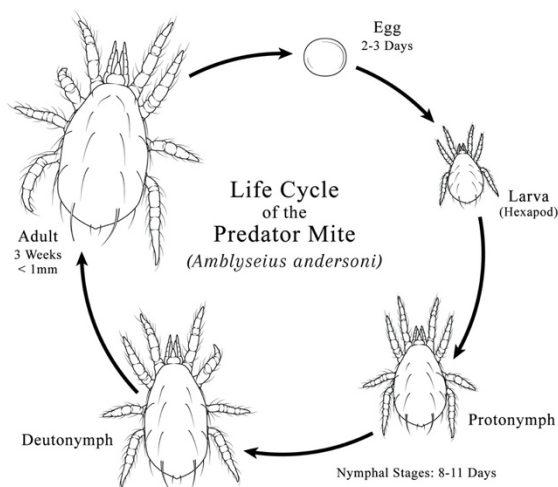
A wide range of pest mite species including: Broad mites, Russet mites, Cyclamen mites, European red mites, Two spotted spider mites, and Gall mites.



LIFE CYCLE:

Larvae emerge from a single egg 2-3 days after female adult laying. *A. andersoni* mites feed on pests at all mobile stages, including egg, juvenile, and adult life stages. They undergo 2 nymphal stages (protonymph and deutonymph) prior to adulthood.

Predators may diapause in response to temperature drops and diminishing light in late summer or fall. However, they can survive winter conditions and reemerge under increased ambient temperatures in the spring.



© Sound Horticulture

USE IN BIOLOGICAL CONTROL:

A. andersoni remain active under a wide temperature range (43-104°F) making them suitable for early season introductions as well as very hot conditions. Best used as a preventative measure when pest populations are low.

MONITORING TIPS:

Use a 10-15 X hand lens to inspect for mites, which are most often found along veins on the underside of leaves or inside mature flowers.

For more information, Please contact **Sound Horticulture**

info@soundhorticulture.com

360.656.6680

www.soundhorticulture.com

PRODUCT INFORMATION:

A. andersoni is available in various forms to suit your specific crop needs:

1) 1-liter bottles contain 25,000 mites on vermiculite. 5-liter bags contain 125,000 mites on vermiculite. Recommended rates for loose material are approximately .2 to .3 *A. andersoni* per square foot. Keep containers horizontal and cool until use. Before opening, rotate the bottle or bag to distribute mites evenly throughout the material.

2) Sachets come in boxes of 250 with hooks provided for easy hanging within foliage. Approximately 250 mites are released from each sachet-breeding colony over a 6+ week period. Rates include 1 sachet per tree, or 1 sachet per 6.5 - 13 feet of crop row. Water resistant "Gemini" sachets can tolerate overhead

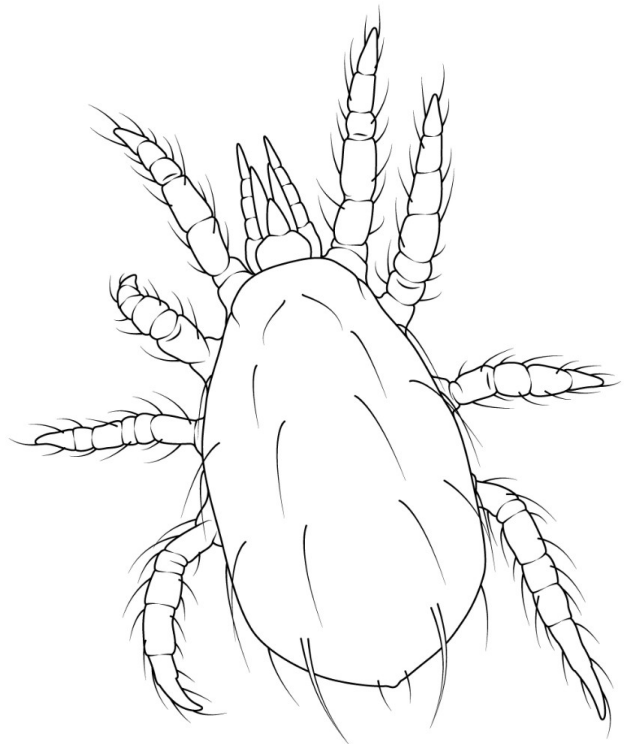
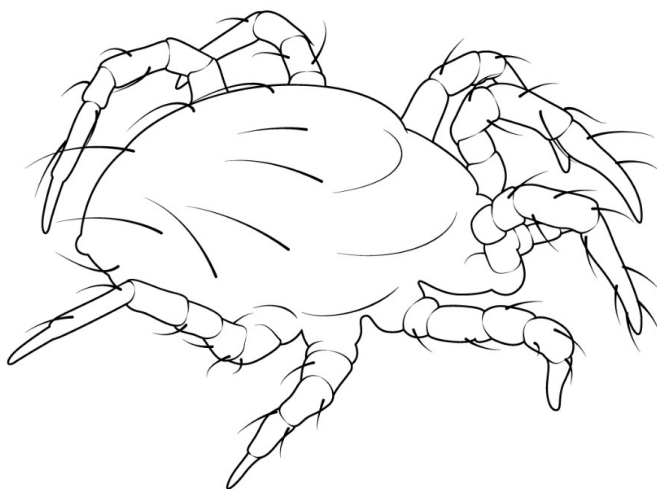
irrigation. Do not hang sachets next to heat pipes and away from intense direct sunlight. Please specify whether "CRS" or "Gemini" sachets are needed.

3) Mini sachets come in boxes of 200 or 1,000. Each sachet contains 125 mites over the course of 6+ weeks in foliage that is not expected to grow together. Minis are best suited in situations where plant foliage is not expected to grow together contiguously.

4) Continuous sachets reduce application labor and work well with overhead irrigation. Strips can be placed on top of support wiring, for example. Each 6 x 328 ft strip contains 125,000 mites.

Do not refrigerate. Use product within 18 hours of receipt.

Predator Mite
Adult
(*Amblyseius andersoni*)



© Sound Horticulture