

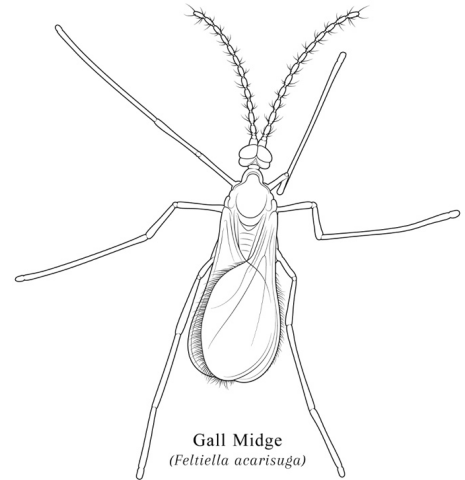


Feltiella acarisuga

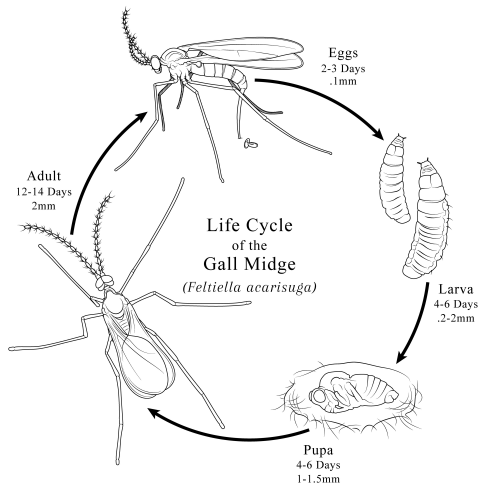
Spider Mite Predator

DESCRIPTION:

Feltiella acarisuga is predatory midge most utilized for spider mite feeding. Due to the voracious feeding nature of this predator, they are not suitable for preventative releases. After mating, females have excellent searching capabilities, and can deposit eggs on plant tissue within spider mite colonies. Larvae can feed on five times as many spider mites as predator *P. persimilis*, and begin feeding immediately after hatching. Larvae tend to be slow moving, and the three instar stages can feed on all mite life stages. *Feltiella* can be active during cold, dark conditions, and may be suitable for early spring releases if adequate food sources are available. *Feltiella* can navigate prey in difficult environments such as the hairy leaves of cucumber and tomatoes. Some species of *Feltiella* have been observed as predators of aphids, scales, eriophyid mites, and other arthropods, however, there is no documentation of *Feltiella*



Gall Midge
(*Feltiella acarisuga*)



TARGET PEST:

Used for control of Two Spotted Spider Mite (*Tetranychus urticae*), Carmine Spider-Mite (*Tetranychus cinnabarinus*), European Red Mite (*Panonychus Ulmi*)

LIFE CYCLE:

Feltiella are received as pupae, and emerge as adults which lay their eggs near spider mite colonies. Once the eggs hatch, *Feltiella* undergoes three larval stages, and the cycle repeats. Although predators may be maintained at low humidity, higher humidity will help them establish in the crop.

IDENTIFICATION:

The eggs are clear and 1/100" (.25mm) long. The larvae are 1/100" - 1/12" (.25 - 2mm) long, and vary in color from yellow, to orange, to red depending on diet. The pupae can be found inside white cocoons along the veins of the leaves. Adult *Feltiella acarisuga* are small, delicate flies that reach about 1/12" (2mm) long. The body, wings and antennae tend to be covered in hair, which is easily rubbed off.

RELEASE RATE:

500-1000 per acre or 10-25 + per 1000 sf canopy. Apply 2 weeks in a row for best establishment.