

StellarComfort

COLLECTION



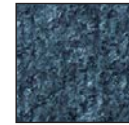
shown in
Thunder



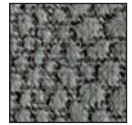
Wicker



Coffeehouse



Twilight



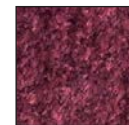
Thunder



Granite



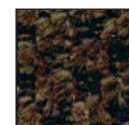
Tuscan



Spiced Cider



Almond



Teak



Bamboo*



Silt



Rhubarb*



Mahogany



Morning
Glory*



Eucalyptus*

Experience a recliner you can really sink into. This bucket back / bucket seat design will hug your form while taking you through all the StellarComfort positions.

UC520
For people
5'4" - 5'10"



UltraPlush*

*Also available in 30 colors UltraPlush fabrics at an additional lead time.

See sell sheet for color options.

UltraComfort
AMERICA™

Positioning you for life.

PROUDLY MADE

BY AMERICANS
with Domestic & Imported Materials

StellarComfort COLLECTION

UC 520

Model Number	UC520
Size	Medium
Weight Capacity	375 LB
Recline Positions	Stellar
Chaise Seat	Yes
Pocketed Coil Seating System	No
Back Type	Bucket
Head Rest Cover	No
Arm Covers	No
Battery Back Up	Yes
Overall Width	38"
Overall Height	46"
Width Between Arms	20"
Floor to Top of Seat	20"
Seat Depth	21.5"
Seat to Top of Back	29"
Seat to Top of Arm	7.5"
Seat Angle Raised	15°
Distance Required from Wall Reclined	24"
Extension Reclined from Back of Seat to End of Foot Rest	44"
Life Time Warranty, Chair Frame, Lift Frame, Recline Frame, Recline Mechanism	Yes
Warranty on Electrical parts	3 YR
Pro Rated Years 4 Thru 7	Yes
Warranty on Mechanical Labor	3 YR
Warranty on Electrical Labor	1 YR
Warranty on Fabric and Foam, and Pocketed Coils	1 YR
Removable Back Option	No
Left Hand Control Option Available	Yes
Extra Pocket Option Available	Standard
4-Motor Heat & Massage Available	Yes
2-Motor Heat & Massage Available	No
Foot Rest Extension Option Available	No
Smart Tek System	Yes

* See Customize Chart for dimension limits
 Sizes may vary depending on fabric, filling material, upholstery and carpet thickness.
 All measurements taken on concrete floor using levels and metal rulers.

User-friendly feature of every UltraComfort recline chair:



Easy to use battery backup system. Each UltraComfort recliner has a battery backup system in the electrical transformer which operates on two 9 volt batteries. In the event of a power failure, the battery system will raise the chair from the reclined to the seated position. The batteries should be replaced after one use.



TV Watching



Sleep



Trendelenburg



Zero Gravity

UltraComfort America proudly introduces StellarComfort, a new concept in positioning comfort. StellarComfort positioning technology allows for a greater range of positions at the touch of a button. These positions may help improve circulation, relieve back pressure and enhance comfort. Experience the difference of this unique motion technology available in multiple sizes.



UltraComfort™
 AMERICA

Positioning you for life.



Literature is current at time of printing. UltraComfort reserves the right to make changes to the product or literature at any time.



Complies with
 UL 73 and
 CSA C22.2 No. 68

UltraComfort
 Phone: 866-793-5100
 Fax: 866-255-9962
 web: www.ultracomfort.net