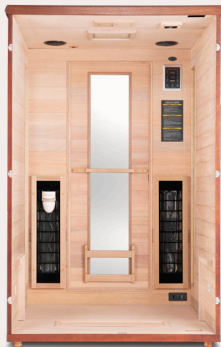
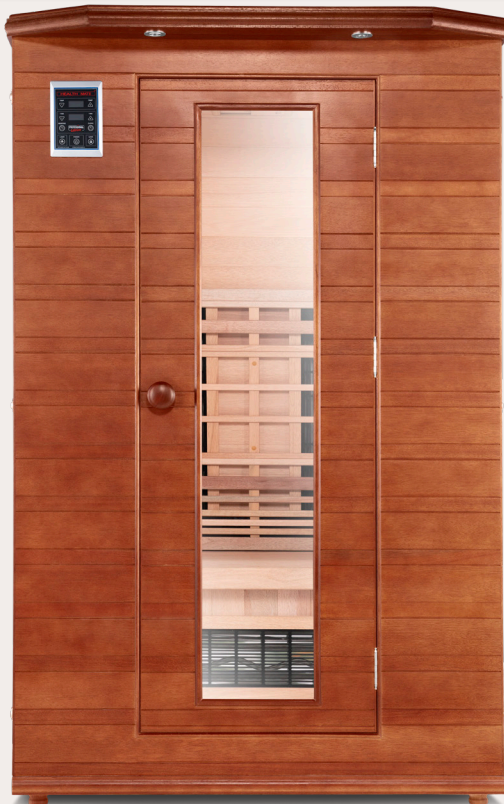


# Enrich 2

True Full Spectrum



## HEALTH MATE SAUNA



### Full Spectrum Heat

Tecoloy medical-grade heaters using patented technology combine with LED panel for near-, mid- and far-infrared heating and 360-degree coverage

### Chromotherapy

High output, 96-diode LED panel provides customizable 9-color near-infrared therapy for enhanced health advantages

### Maximum Heat Retention

Generous wood exterior and interior construction with limited yet ample see-through glass ensures less than 5% heat loss for optimal benefits

### Ergonomic Bench

Comfort enhancing reversible bench features adjustment for sitting or reclining

### Low EMF

8 heaters plus electrical and controllers feature safe electromagnetic frequency levels as verified by outside third parties

### Bluetooth

Top performing built-in sound system syncs with any compatible smartphone for added relaxation and enjoyment

### Eco-Friendly

Solid eucalyptus wood from sustainable sources for maximum quality and lasting durability plus energy-efficient design

## SPECIFICATIONS



### Electrical

120V  
1810 Watts  
15 amps  
NEMA 5-15P

### Interior

Width: 45"  
Depth: 39 ¾"  
Height: 71 ½"

### Exterior

Width: 48 ½"  
Depth: 48 ¾"  
Height: 78 ½"

### Capacity

1-2 People

[www.healthmatesauna.com](http://www.healthmatesauna.com)