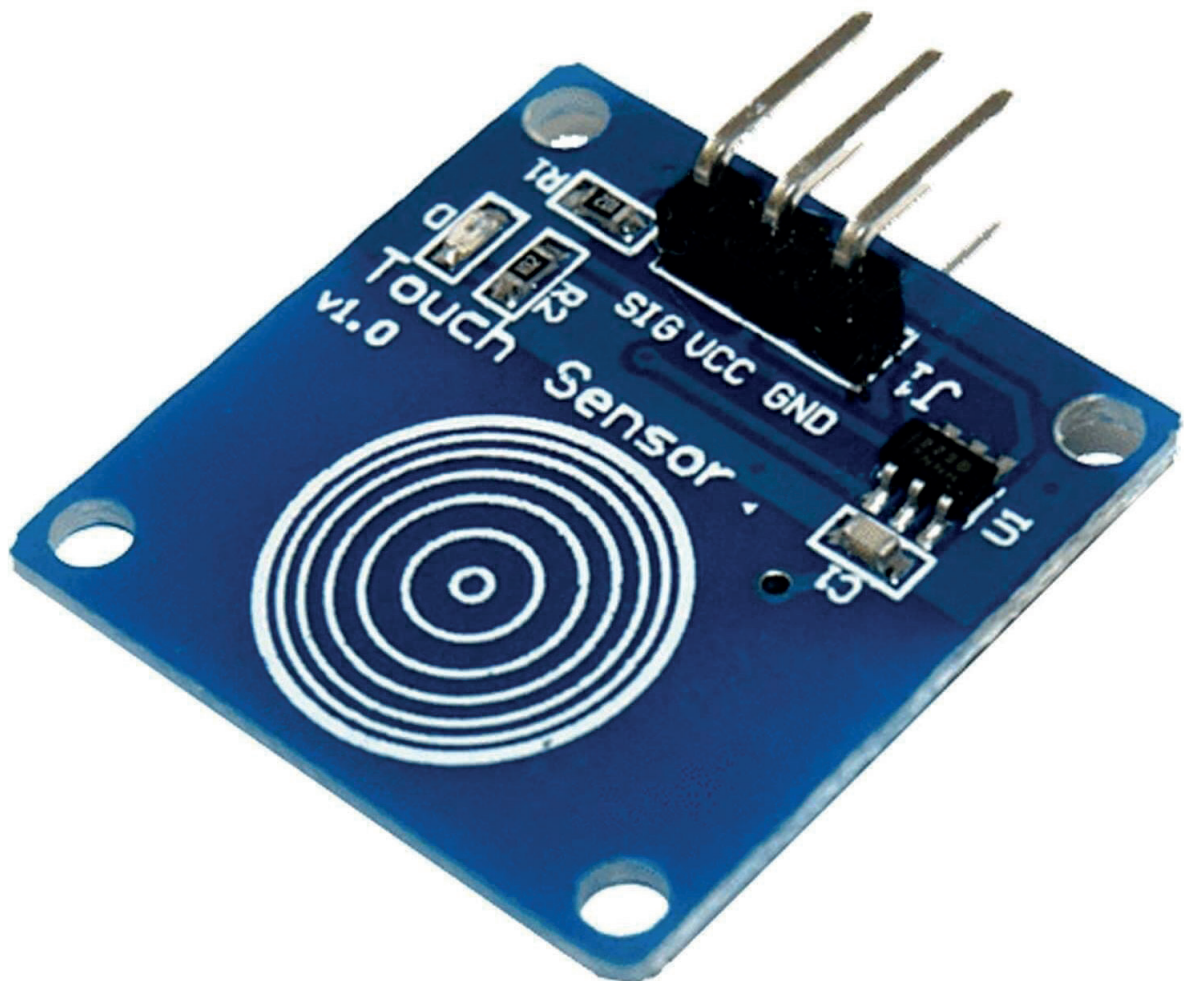


TTP223B Touch Sensor Modul Datenblatt



Content:

[1. Specifications](#)

[2. Pinout](#)

[3. Connection Diagram](#)

1. Specifications

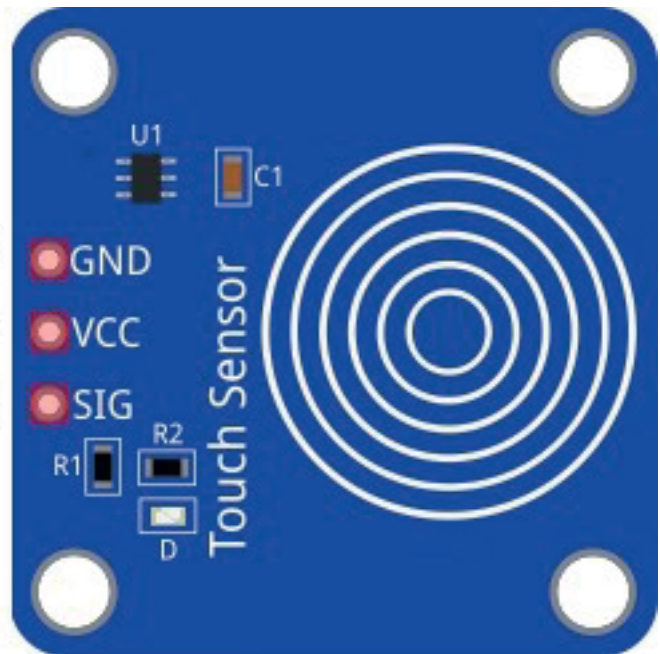
- Operating voltage range: From 2.0V to 5.5V DC
- Operating temperature: From -20°C to 70°C
- Module dimensions: 24mm x 24mm
- Sensor dimensions: 11mm x 11mm
- Response time in low power mode: 220ms
- Response time in fast mode: 60ms
- Power indicator: Green LED
- Stable touching detection of human body

The module has stable touch detection of the human body, so it is suitable for replacing traditional direct switches.

In the initial state, the module output is in the LOW state. When a human body touches the sensing area, the module output is in the HIGH state. If there is no touch for more than 12s, the sensor switches to the LOW power mode.

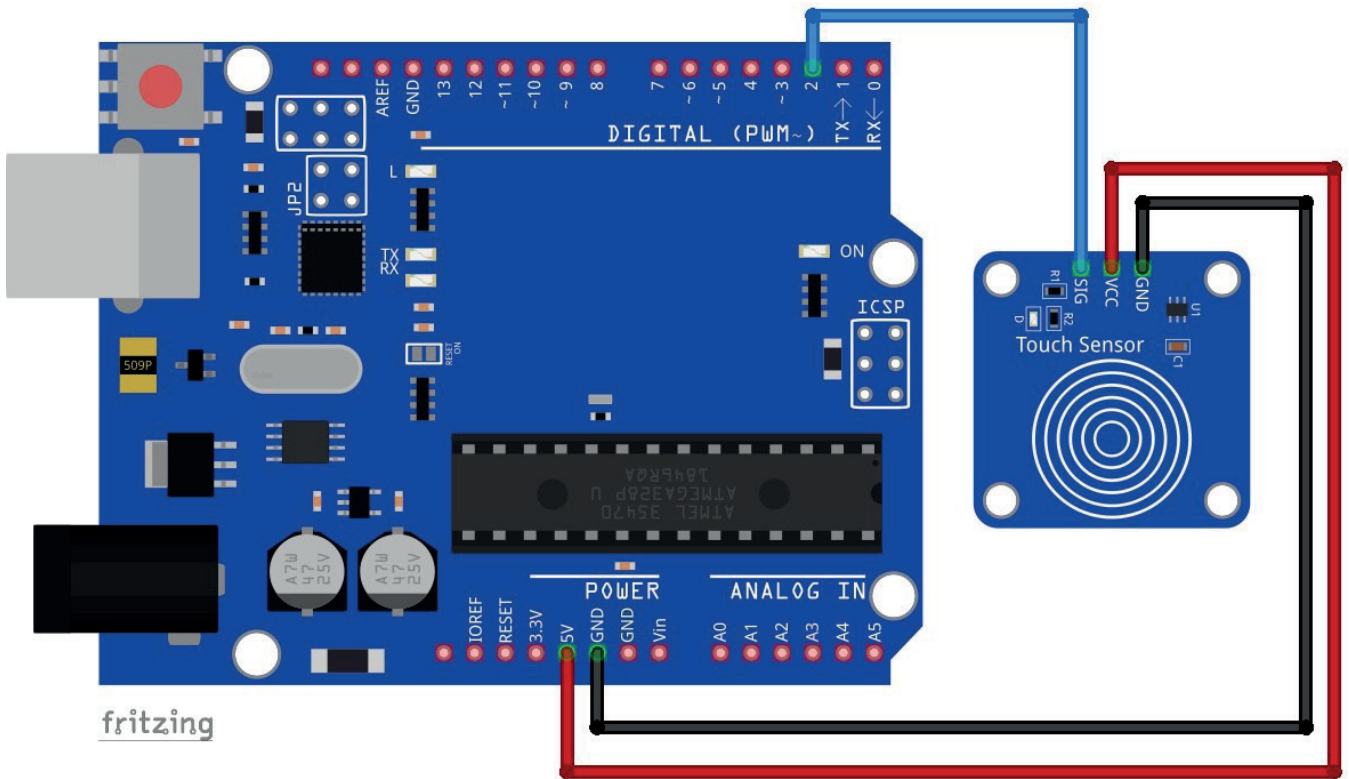
2. Pinout

GROUND - GND
POWER SUPPLY - VCC
SIGNAL PIN - SIG

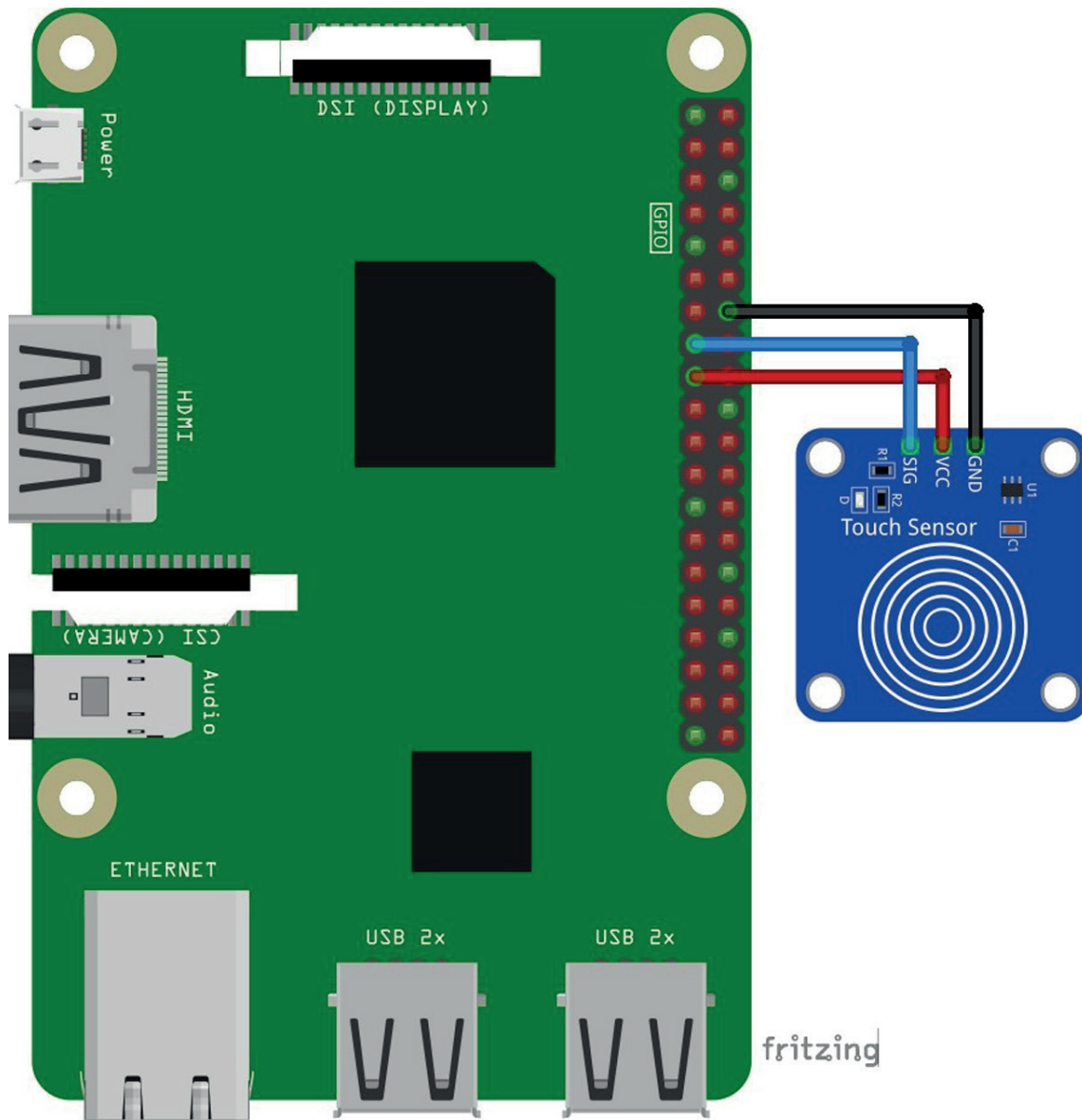


The SIG pin is a digital signal output pin. When the sensor is touched, the signal pin is in the HIGH state, and when the sensor is not touched, it is in the LOW state. This pin should be connected to the digital input pin of the microcontroller.

3. Connection Diagram



Sensor Pin	Microcontroller Pin	Wire Color
SIG	D2	Blue Wire
GND	GND	Black Wire
VCC	5V	Red Wire



Sensor Pin	Microcontroller Pin	Physical Pin	Wire Color
GND	GND	14	Black Wire
SIG	GPIO22	15	Blue Wire
VCC	3V3	17	Red Wire

AZ-Delivery

Ihr Experte für Mikroelektronik!

For top quality microelectronics, we are your go to. We provide an array of application examples, full installation guides, eBooks, libraries, and all-round assistance. AZ-Delivery, your microelectronics expert!