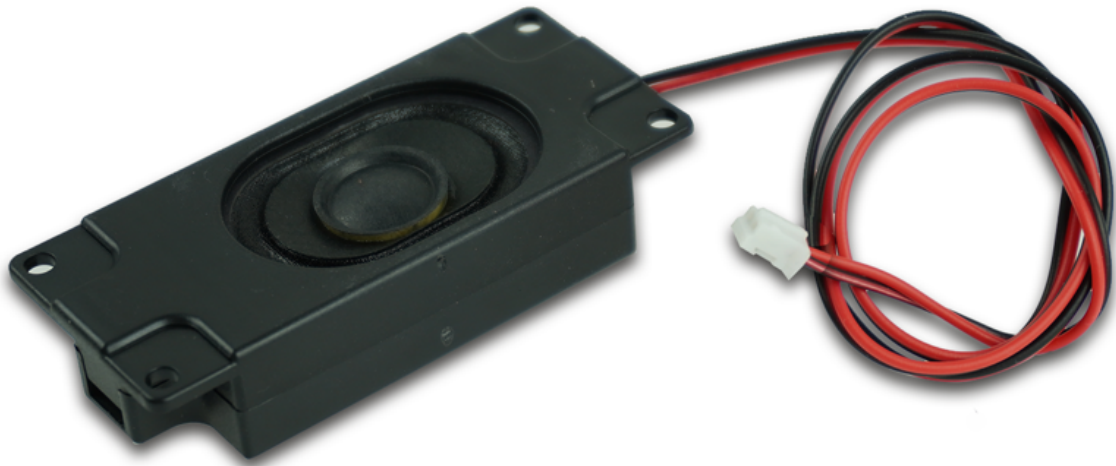


**Speaker 3W 8 Ohm**

**Datasheet**

# **Speaker 3W 8 Ohm**

**with JST-PH2.0 2 pin connector**



## **Table of Contents**

<b>Specifications</b>	<b>3</b>
<b>Dimension drawing</b>	<b>4</b>

## Specifications

Output Power	3W(max.)
impedance	8 Ohm
Cable lenght	420mm
Weight	23g

**Dimension drawing**

