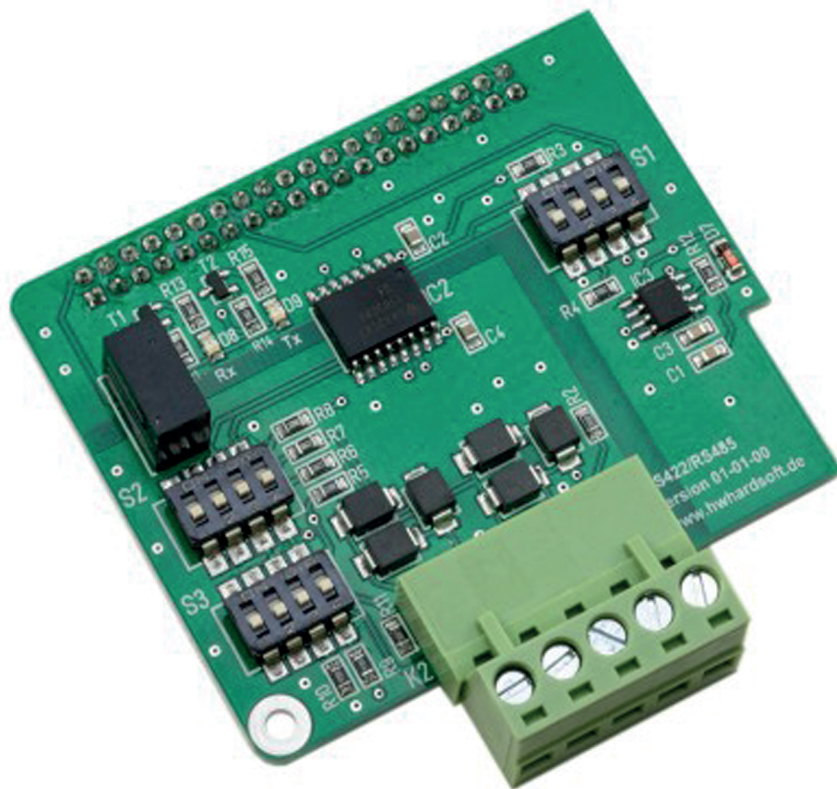


RS422/RS485 Shield für Raspberry Pi Datenblatt



Contents:

- 1. Features**
- 2. Applications**
- 3. Protocols**
- 4. Control Elements**
- 5. S1 - DIP Switch Configuration – send/receive control**
- 6. S2 - DIP Switch Configuration – RS422/485 mode**
- 7. S3 - DIP Switch Configuration – termination resistors**
- 8. Examples RS422 mode**
- 9. Examples RS485 mode**

1. Features

- RS485 mode (half duplex)
- RS422 mode (full duplex)
- Galvanic isolation between Raspberry Pi and connected RS485 bus
- Enhanced ESD protection
- Adjustable automatic transceiver switching for RS485 mode
- Adjustable control of transceiver/receiver via GPIO pin
- Adjustable Pull-Up, Pull-Down und terminating resistors
- Removable block terminal for bus connection
- Indicator LEDs for RX and TX signals
- Many options adjustable via DIP switches
- For Raspberry Pi 2 B, 3 B

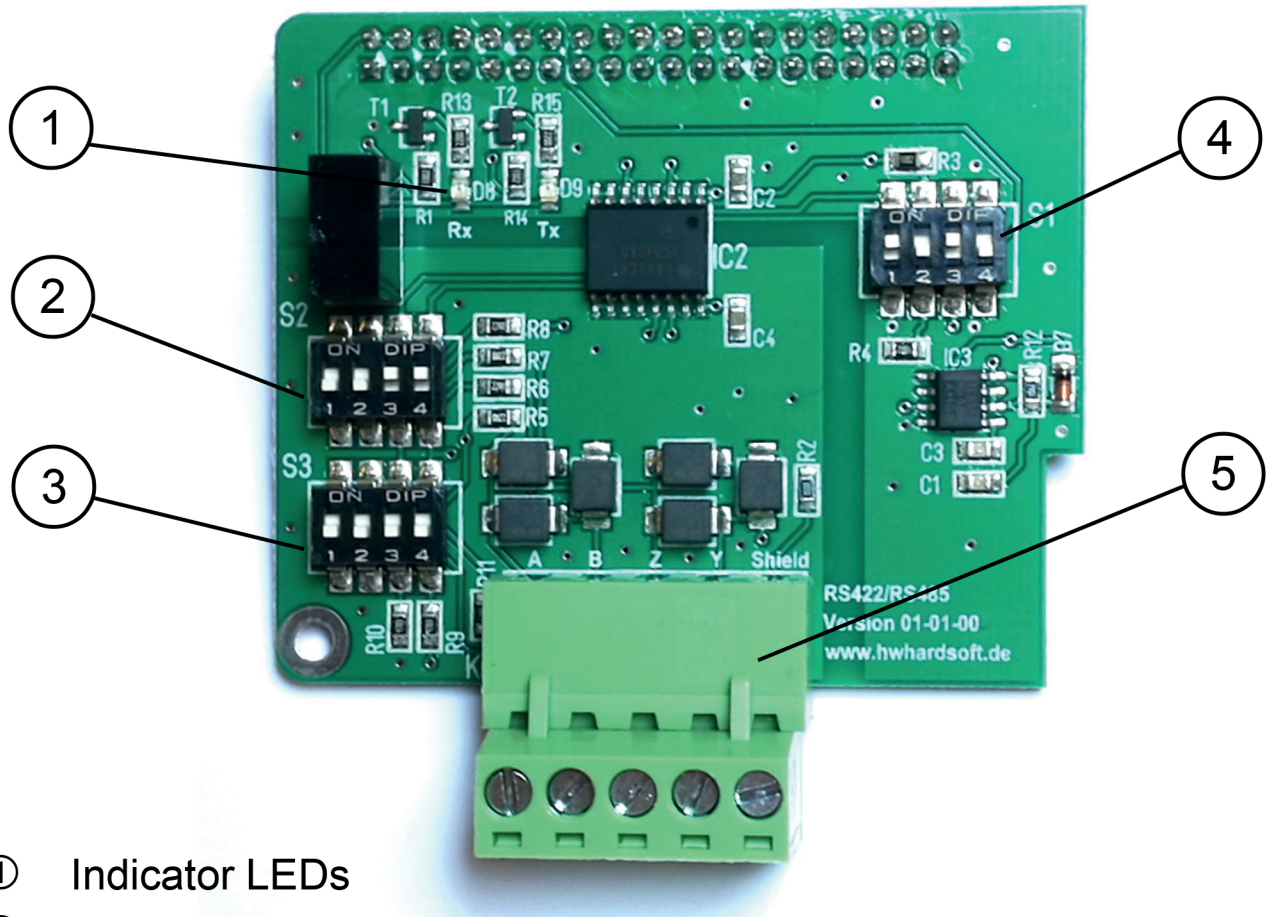
2. Applications

- Smart Home
- Building Control
- Industrial Control
- Lighting Control
- Video Surveillance

3. Protocols

- Modbus
- DMX
- Pelco D
- Profibus
- etc

4. Control Elements



- ① Indicator LEDs
- ② DIP Switch S2
- ③ DIP Switch S3
- ④ DIP Switch S1
- ⑤ Removable Terminal Block

5. S1 - DIP Switch Configuration – send/receive control

Channel	Description
1	Receiver always on
2	Transmitter connected to Receiver
3	Automatic DE/RE control
4	DE/RE control via GPIO18

6. S2 - DIP Switch Configuration – RS422/485 mode

Channel	Description
1	Connect Y to terminal K2
2	Connect Z to terminal K2
3	Connect internally Y to A
4	Connect internally Z to B

7. S3 - DIP Switch Configuration – termination resistors

Channel	Description
1	4k7 Pull-up Resistor on A
2	4k7 Pull-down Resistor on B
3	Not used
4	Terminating Resistor On

8. Examples RS422 mode

SW1	
1	ON
2	OFF
3	OFF
4	ON *

SW2	
1	ON
2	ON
3	OFF
4	OFF

SW3	
1	ON
2	OFF
3	OFF
4	OFF

9. Examples RS485 mode

Send/receive control via GPIO18, no terminating resistor

SW1	
1	OFF
2	ON
3	OFF
4	ON *

SW2	
1	OFF
2	OFF
3	ON
4	ON

SW3	
1	OFF
2	OFF
3	OFF
4	OFF

automatic send/receive control, multipoint master

SW1	
1	OFF
2	ON
3	ON
4	OFF

SW2	
1	OFF
2	OFF
3	ON
4	ON

SW3	
1	ON
2	OFF
3	ON
4	ON

* Set GPIO18 to high level to transmit protocols