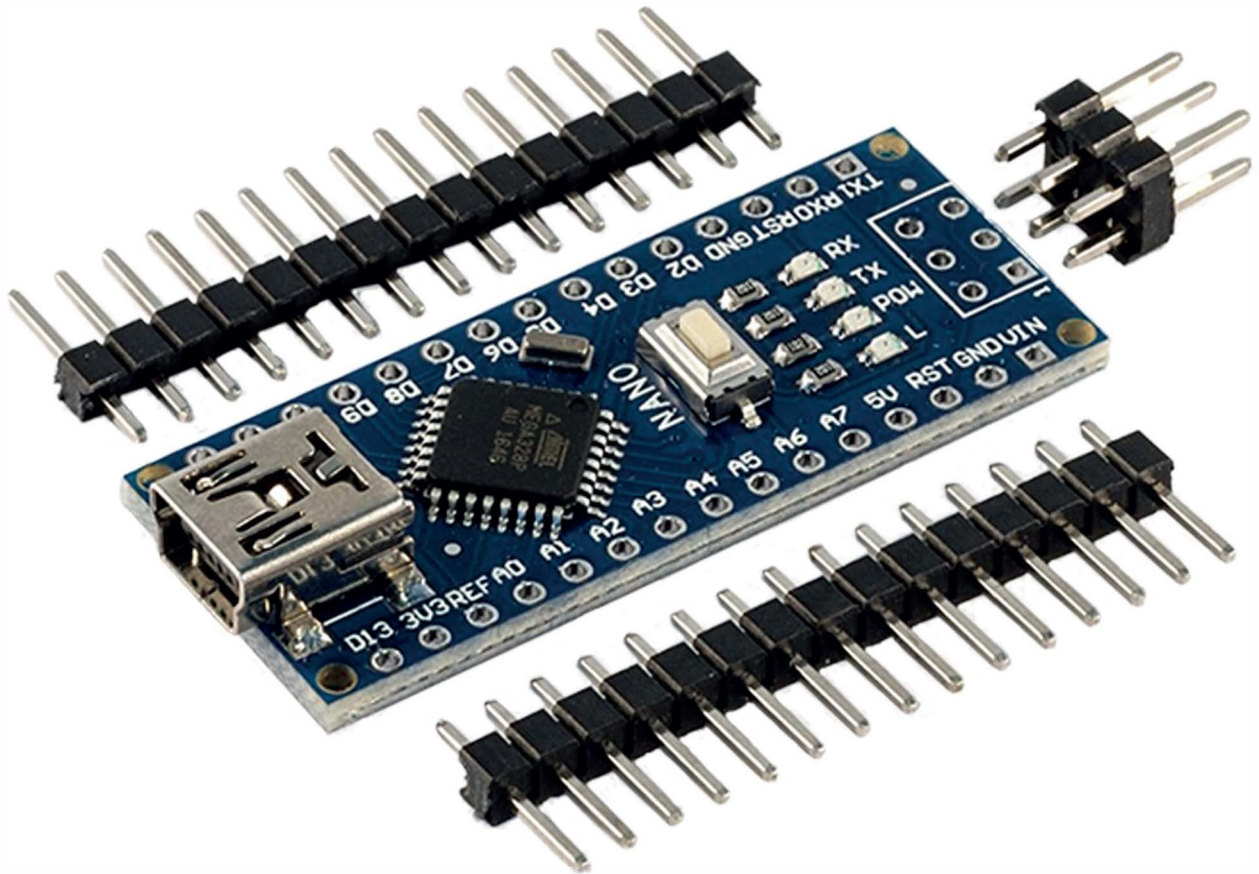


Nano V3 mit CH340 Datenblatt



Contents:

- 1. Description**
- 2. Technical Parameters**
- 3. Labeling**
- 4. Application**

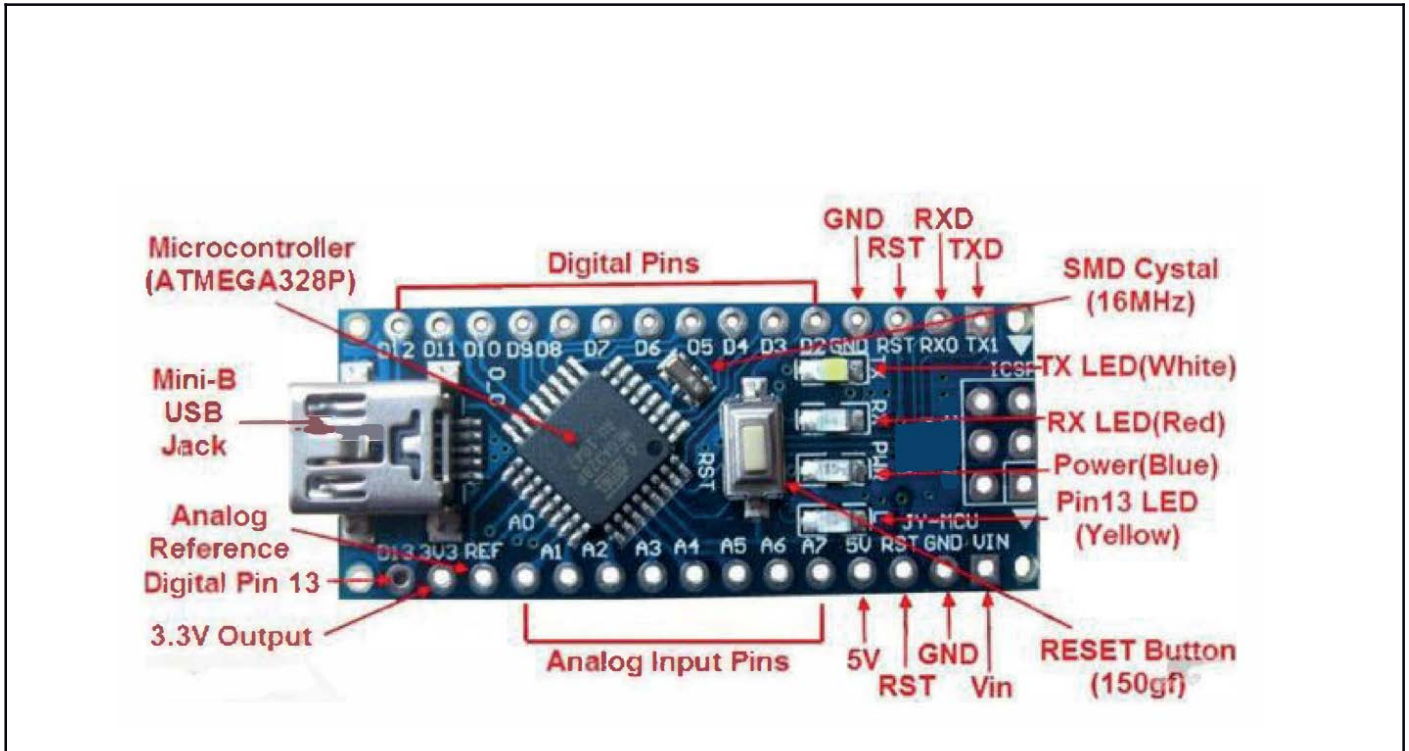
1. Description

The Nano V3 is an open source code base board with ultra-small simple I / O platform, compared with the previous version of common Boards. It is ideal for prototyping using crimp development boards, for all contacts displayed on the two lines at the edges of the board, spacing 2.54mm, distance 15mm rulers. The size of the Nano V3 accounts for a large advantage that can be used to develop the required run independently, and has interactive effects of electronic equipment; can also be used to develop a connected computer, interactive work with Flash, Processing, Max / Msp, PD, VVVV done in collaboration with other software.

2. Technical Parameters

- CH340G or FT 232RL (improve download speed and stability of WIN7 / WIN8)
- 8 Analog input ports: A0 ~ A7
- 14 Digital input / output ports: TX, RX, D2 ~ D13 -6 PWM ports: D3, D5, D6, D9, D10, D11
- 1 Pair of TTL level serial transceiver ports RX / TX
- Using Atmega328 MCU
- DC Current per I/O pin: 40Ma
- Flash Memory: 32KB (ATmega328) (of which 2KB used by bootloader)
- SRAM: 2KB (ATmega328)
- EEPROM: 1KB (ATmega328)
- Clock Speed: 16MHz
- There is bootloader installed in it
- Support USB download and Power
- Support for external 5V ~ 12V DC power supply
- Support power supply by 9V battery
- Support ISP download
- Dimensions: 0.73"x1.7", 45(L)x18(W)mm

3. Labeling



4. Application

