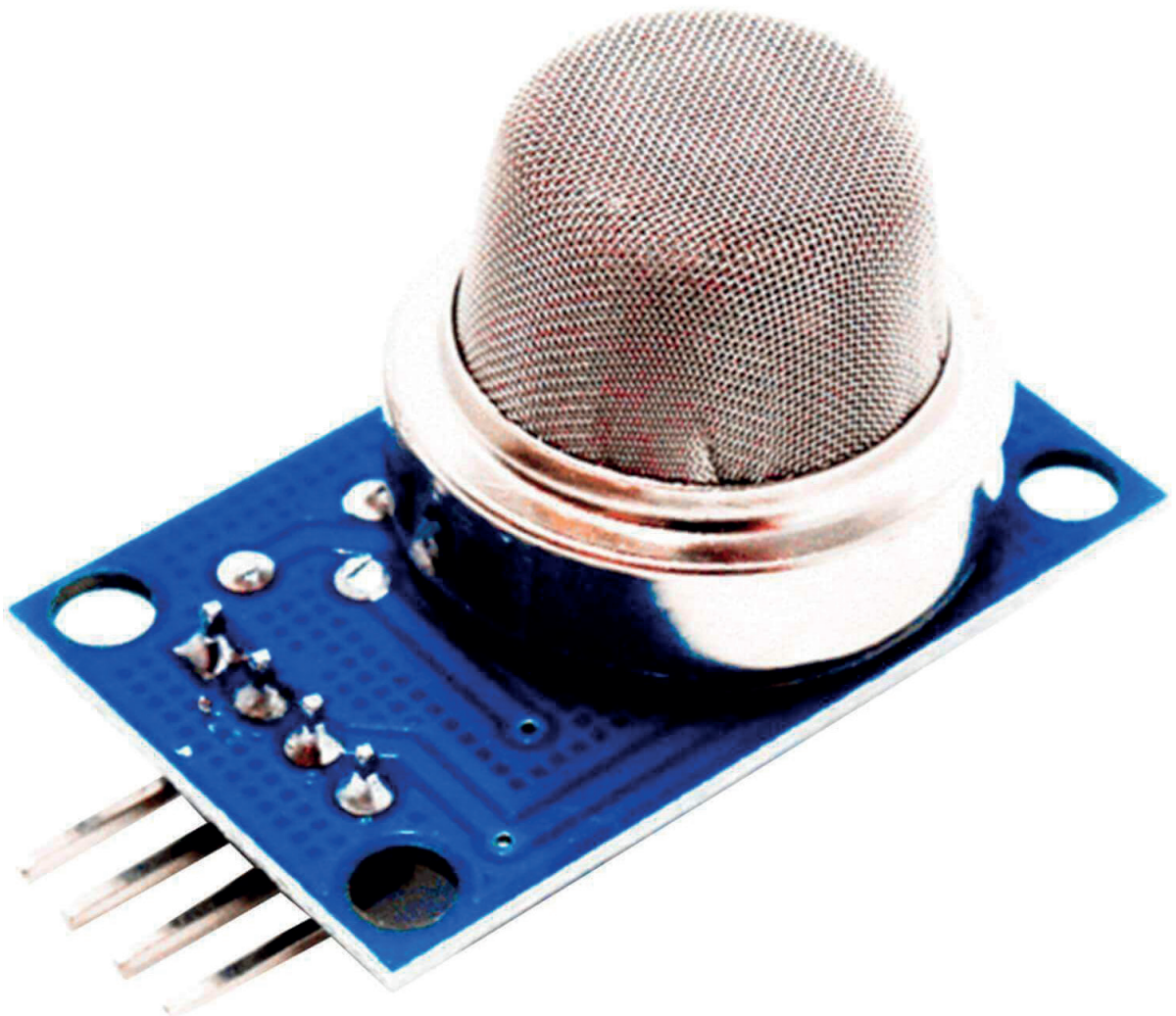


MQ-135 Gas Sensor Modul Datenblatt



Content:

- [1. Specifications](#)
- [2. Pinout](#)
- [3. Connection Diagram](#)

1. Specifications

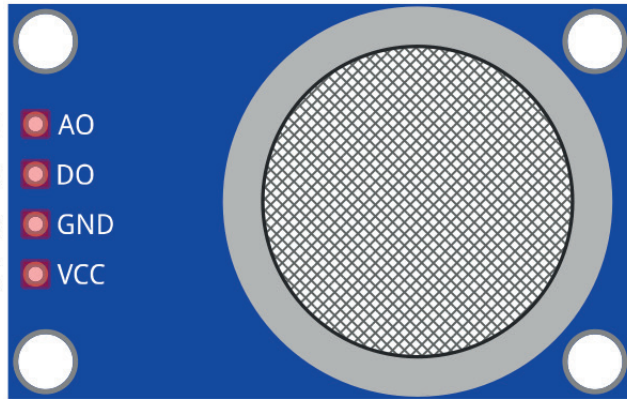
Operating Voltage:	5V
Operating Current:	150mA
Power Consumption:	900mW
Load Resistance:	20k Ω
Heater Resistance:	31 Ω +5%
Sensing Resistance	2k Ω - 20k Ω
Preheat Time:	24h
Concentration Scope:	200 – 10000ppm (parts per million)
Output:	analog, digital
Dimensions:	33mm x 21mm x 22mm (1.3in x 0.8in x 0.9in)

For the best detecting results, gas sensor has to be preheated. The best preheat time for the sensor is above 48 hours.

The module sensitivity can be adjusted with an on-board potentiometer. Moving the potentiometer shaft into the clockwise direction increases the sensitivity. Moving the shaft of the potentiometer in the counterclockwise direction decreases the sensitivity of the module.

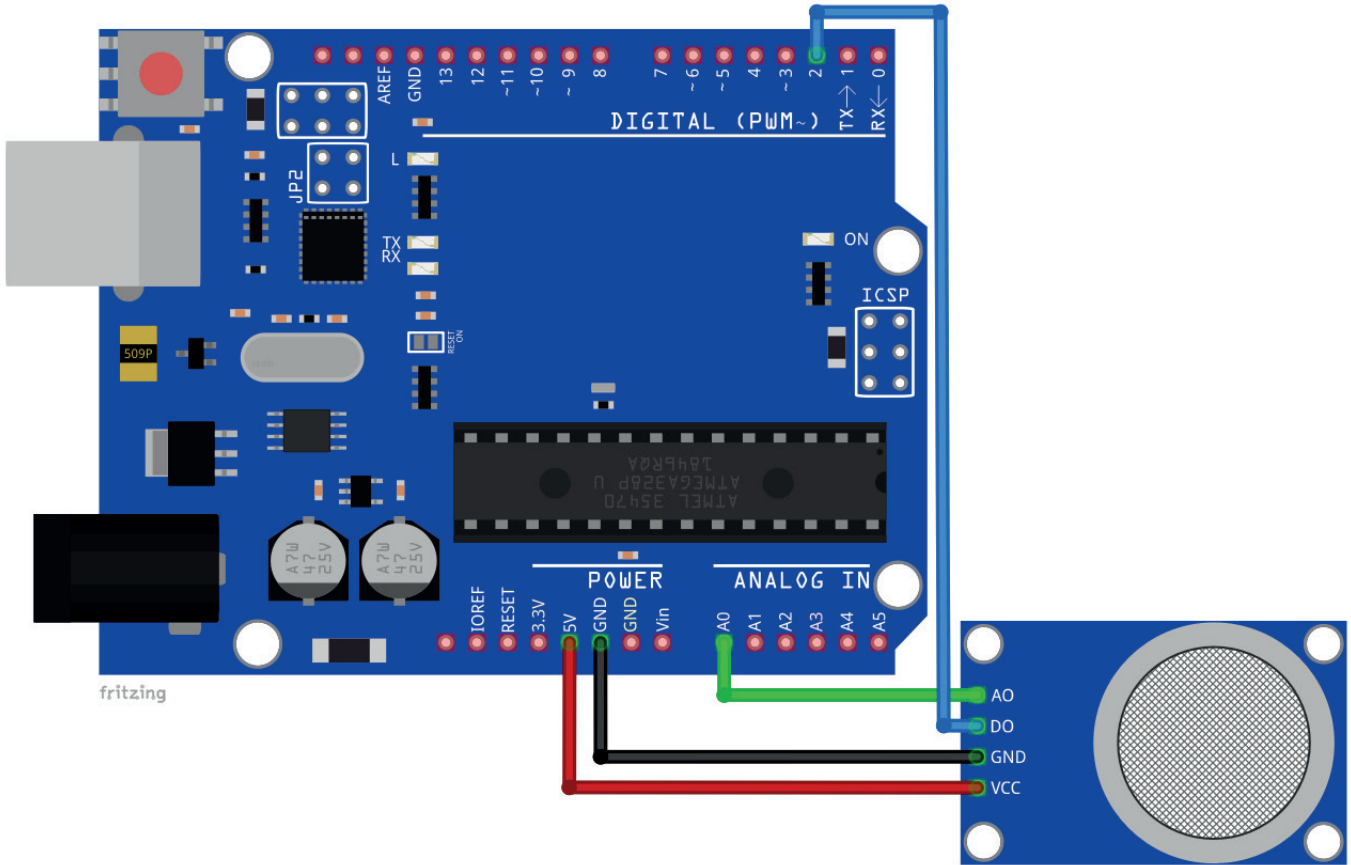
2. Pinout

ANALOG OUTPUT - A0 ● AO
DIGITAL OUTPUT - D0 ● DO
GROUND - GND ● GND
POWER SUPPLY - VCC ● VCC

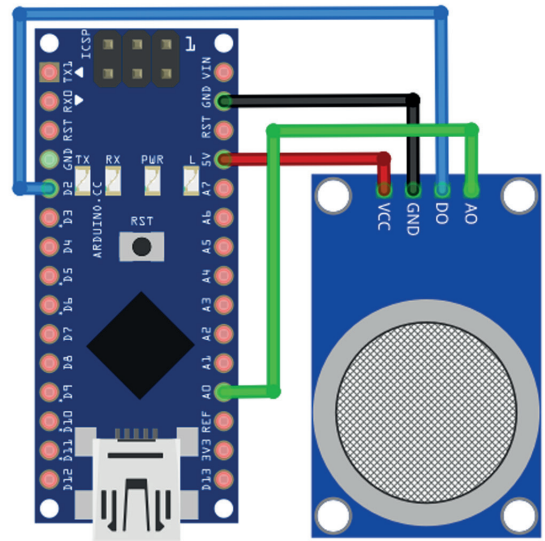
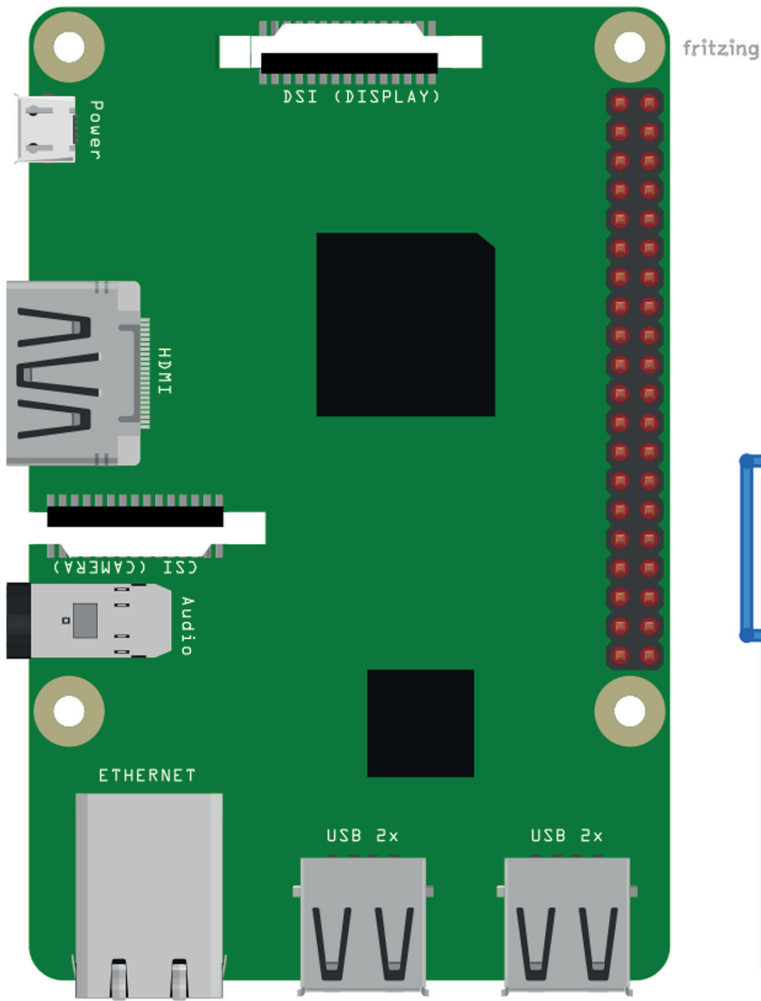


NOTE: Microcontrollers Compatible with Raspberry Pi do not have a digital-analog converter and can not be used to read analog voltages.

3. Connection Diagram



Module Pin	Microcontroller Pin	Wire Color
VCC	5V	Red Wire
GND	GND	Black Wire
DO	D2	Blue Wire
AO	A0	Green Wire



Module Pin	Nano Pin	Wire Color
VCC	5V	Red Wire
GND	GND	Black Wire
DO	D2	Blue Wire
AO	A0	Green Wire

AZ-Delivery

Ihr Experte für Mikroelektronik!

For top quality microelectronics, we are your go to. We provide an array of application examples, full installation guides, eBooks, libraries, and all-round assistance. AZ-Delivery, your microelectronics expert!