

## MG90S Micro Servo Motor Datenblatt



## Content:

- [1. Specifications](#)
- [2. Pinout](#)
- [3. Connection Diagram](#)

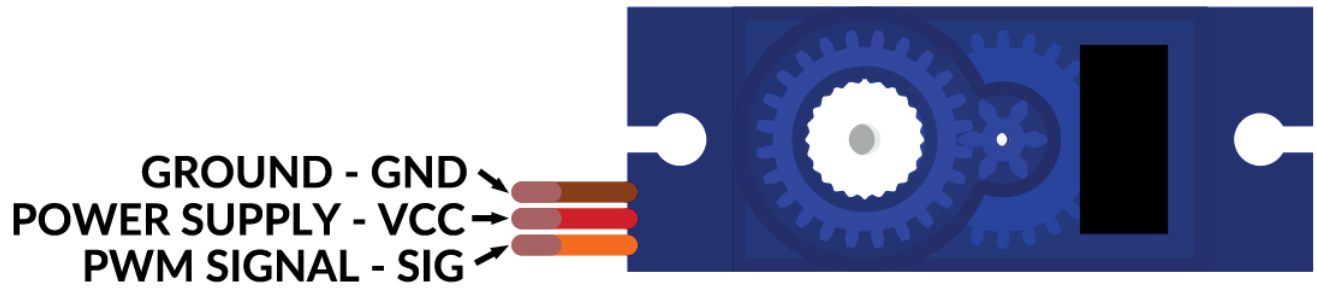
## 1. Specifications

Operating Voltage	4.8V-6V
Operating Current (Idle)	10mA (Typical)
Operating Current (Movement)	100-250mA
Operating Current (Stall)	700mA
Operating Speed	0.1s/60° (4.8V), 0.08s/60° (6V)
Stall Torque	1.8kgf·cm (4.8V), 2.2 kgf·cm (6V)
Dead Band Width	5μs
Maximum Angle of Rotation	90°
Weight	13.4g
Cable Length	175 mm
Dimensions	22mm x 12mm x 28mm (0.8in x 0.4in x 1.1in)

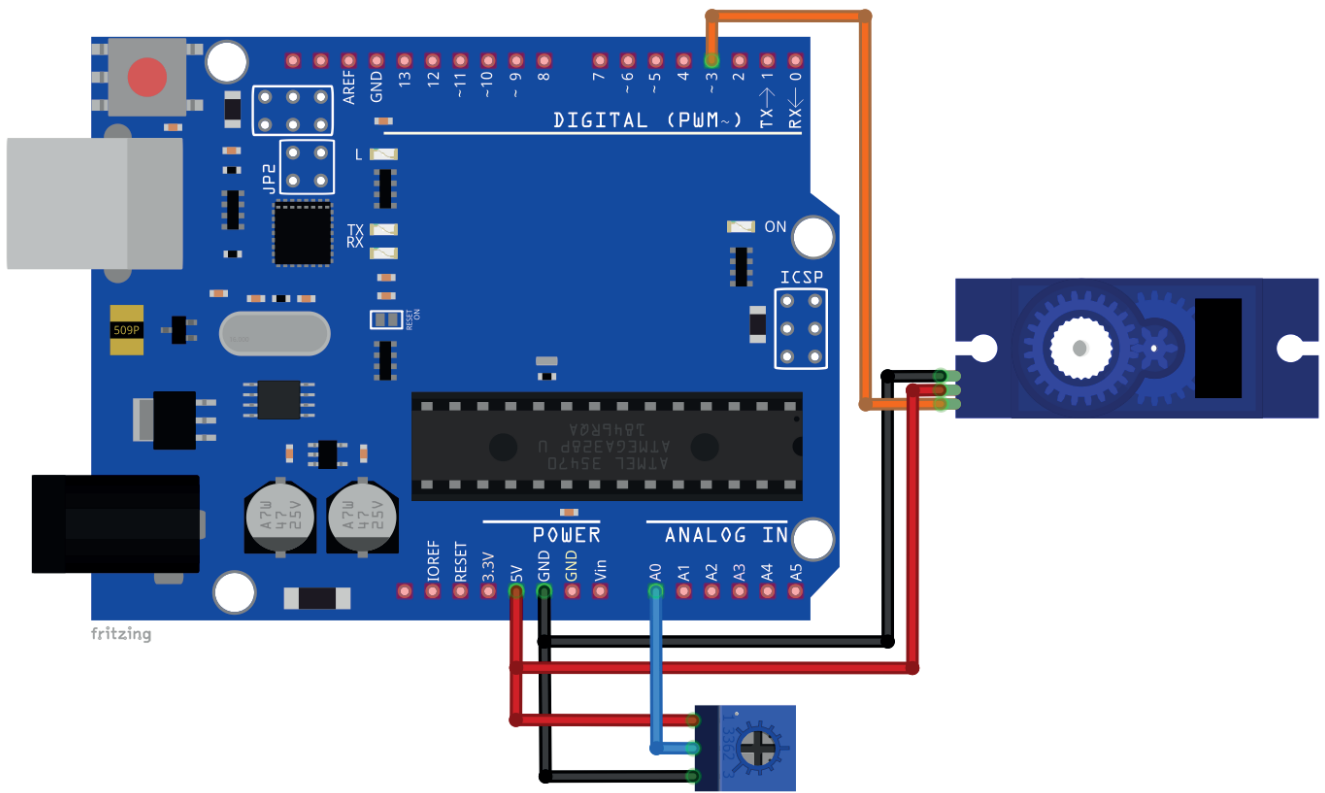
The Stall torque at the voltage of 4.8V is 1.8kg-cm and at 6V is 2.2kg-cm.

The speed of the moving shaft is 60 degrees per 0.12 seconds at the voltage of 4.8V. The speed is also dependant on the voltage that is used.

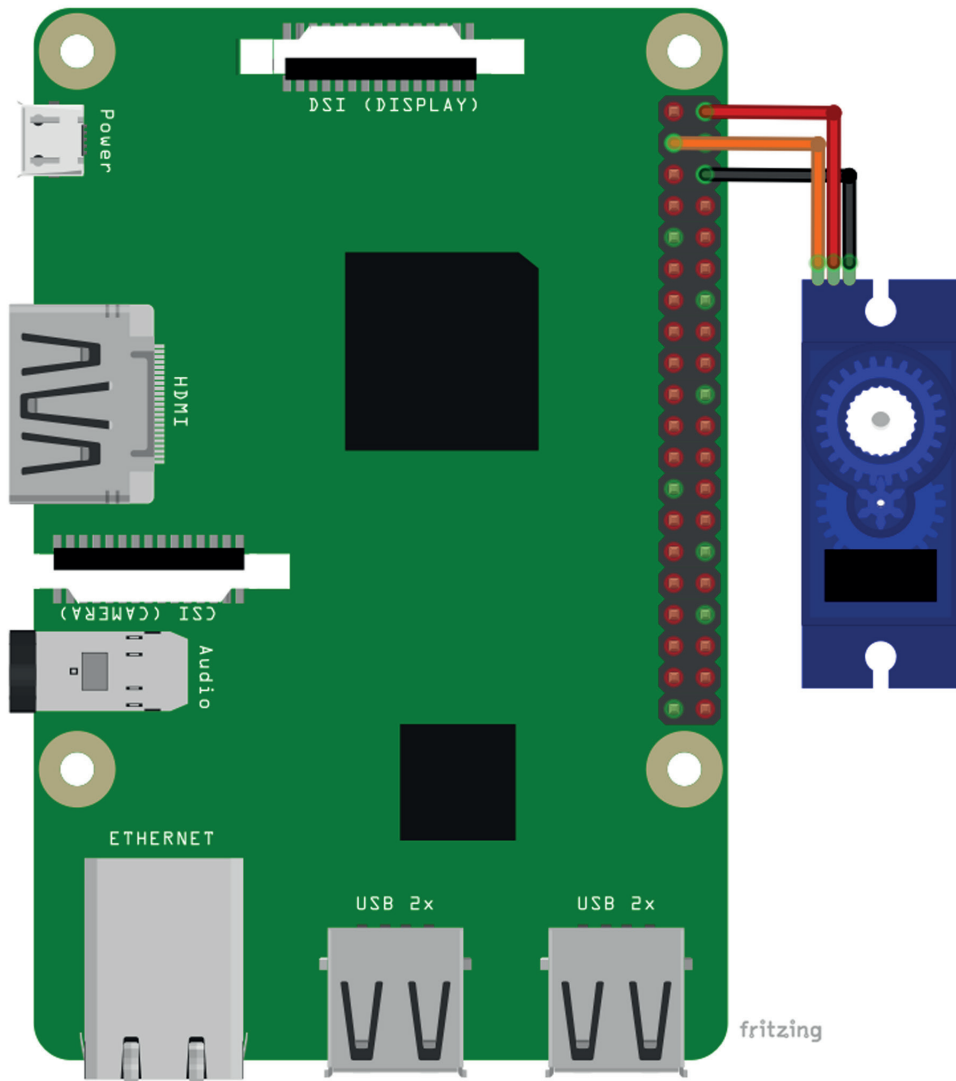
## 2. Pinout



### 3. Connection Diagram



Motor Pin	Microcontroller Pin	Wire Color
GND	GND	Black Wire
VCC	5V	Red Wire
SIG	D3	Orange Wire
Potentionmeter Pin	Microcontroller Pin	
P1	5V	Red Wire
P2 (Center Pin)	A0	Blue Wire
P3	GND	Black Wire



Module Pin	Microcontroller Pin	Physical Pin	Wire Color
VCC	5V	2	Red Wire
SIG	GPIO2	3	Black Wire
GND	GND	6	Orange Wire

# AZ-Delivery

Ihr Experte für Mikroelektronik!

**For top quality microelectronics, we are your go to. We provide an array of application examples, full installation guides, eBooks, libraries, and all-round assistance. AZ-Delivery, your microelectronics expert!**